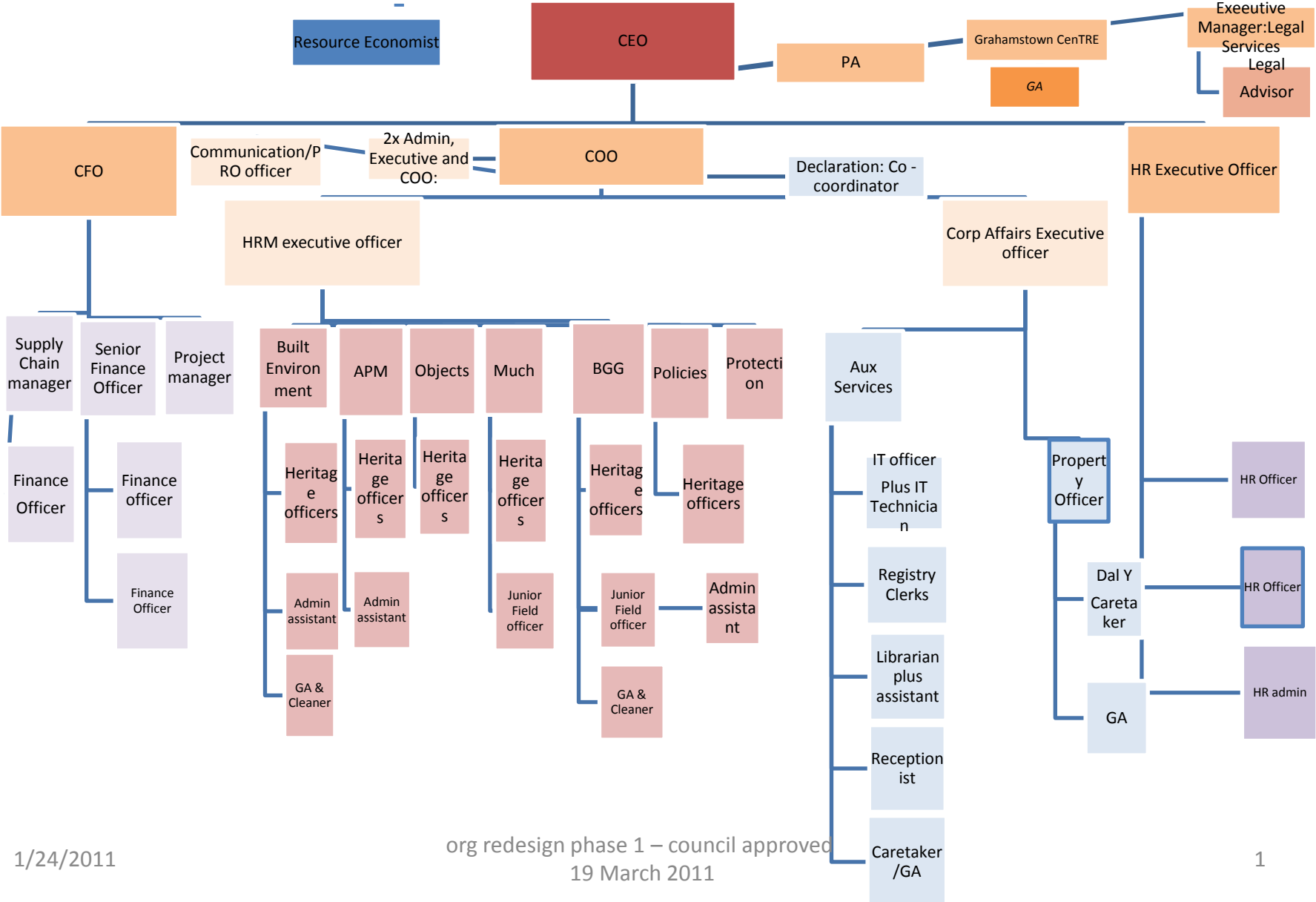
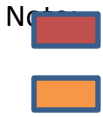


Interim new Organogram – Phase 1

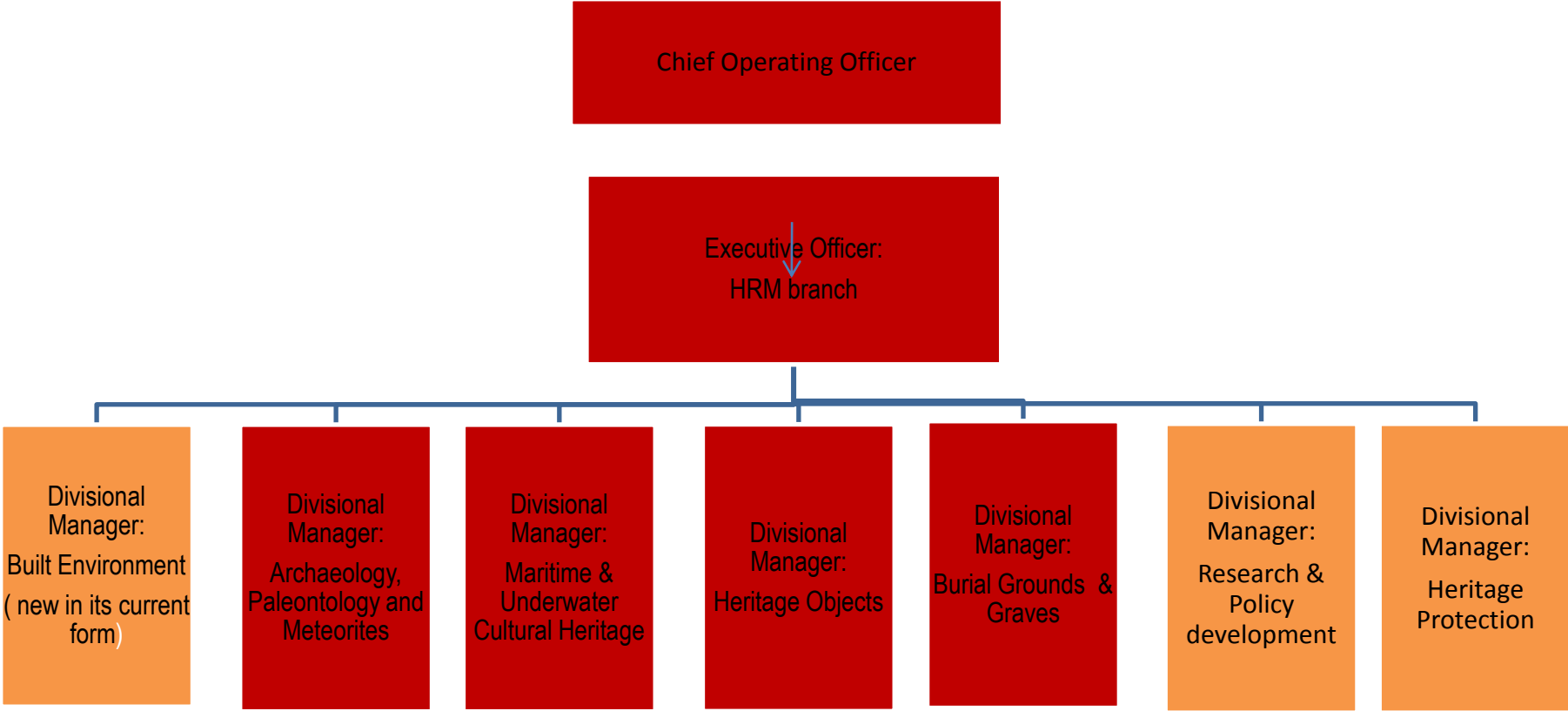
Approved by council on 19 March 2011



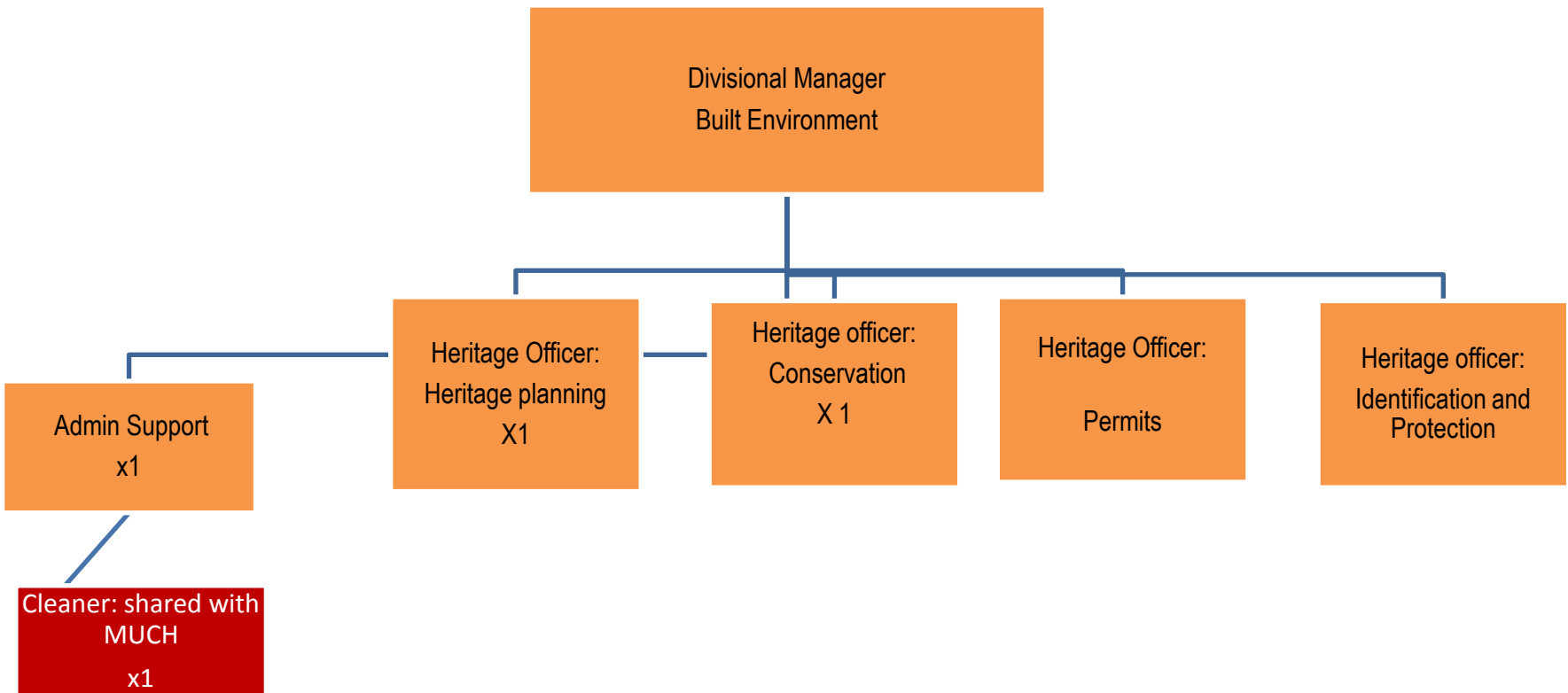


existing roles in old and new structure in all the slides
New roles defined to fill the gaps and to address resource requirements in all the slides

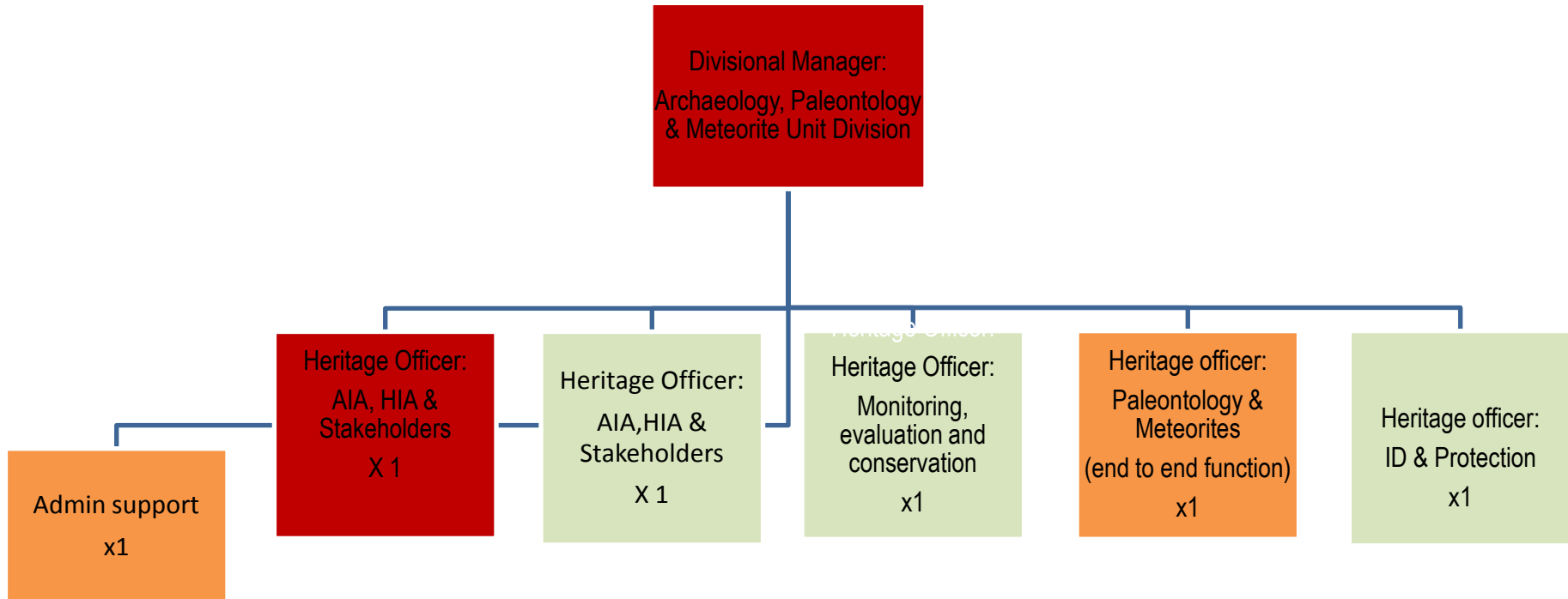
HRM TOP STRUCTURE



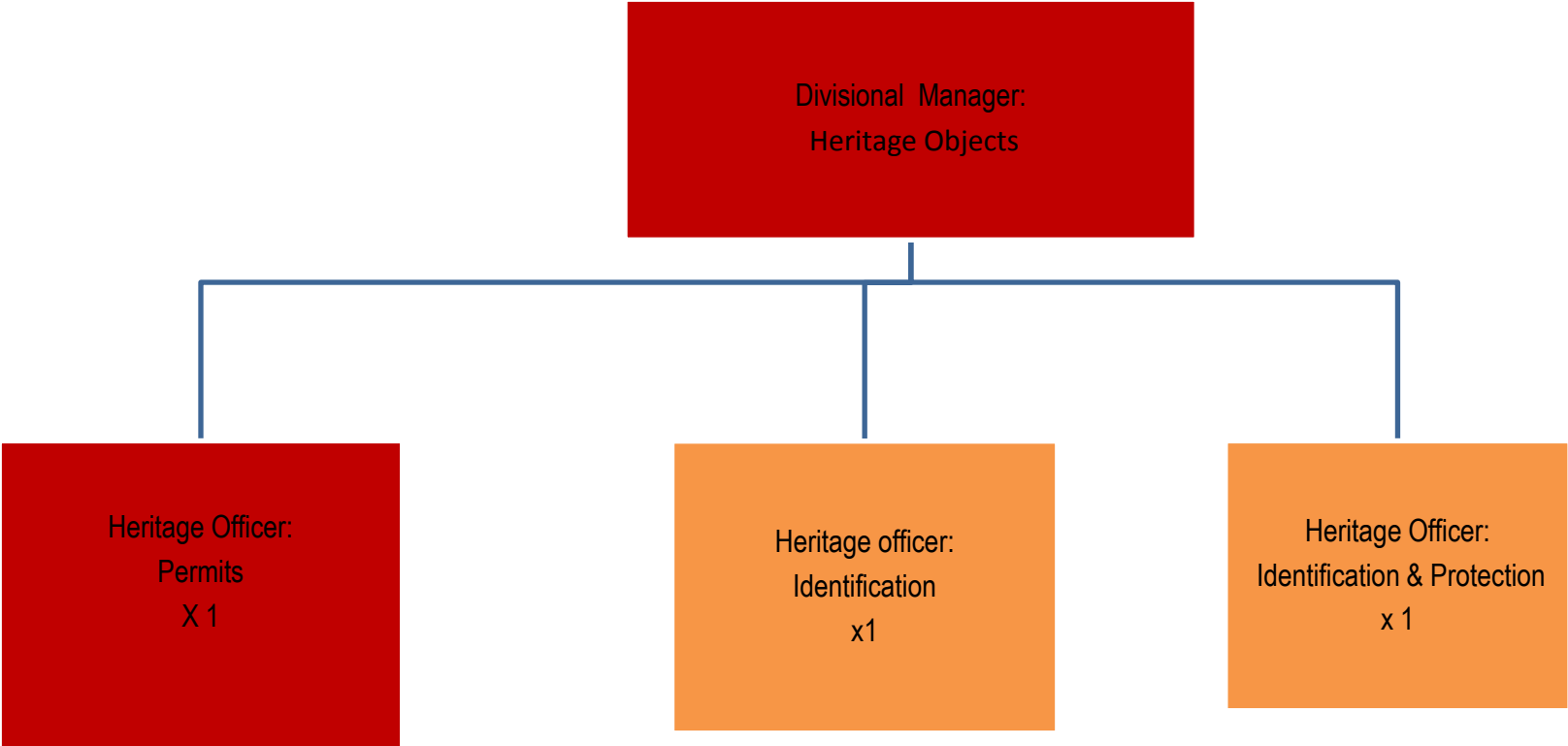
BUILT ENVIRONMENT DIVISION



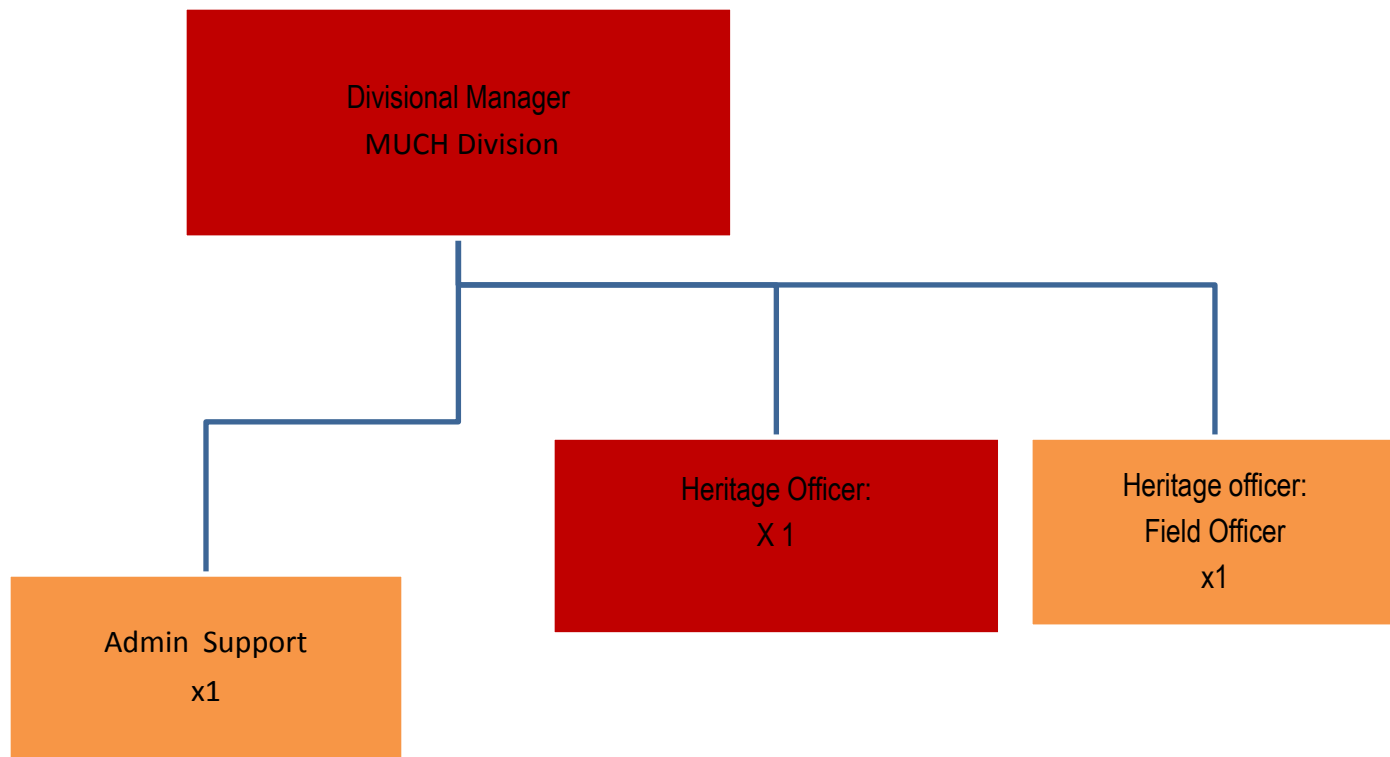
Archaeology, Paleontology and Meteorites Division



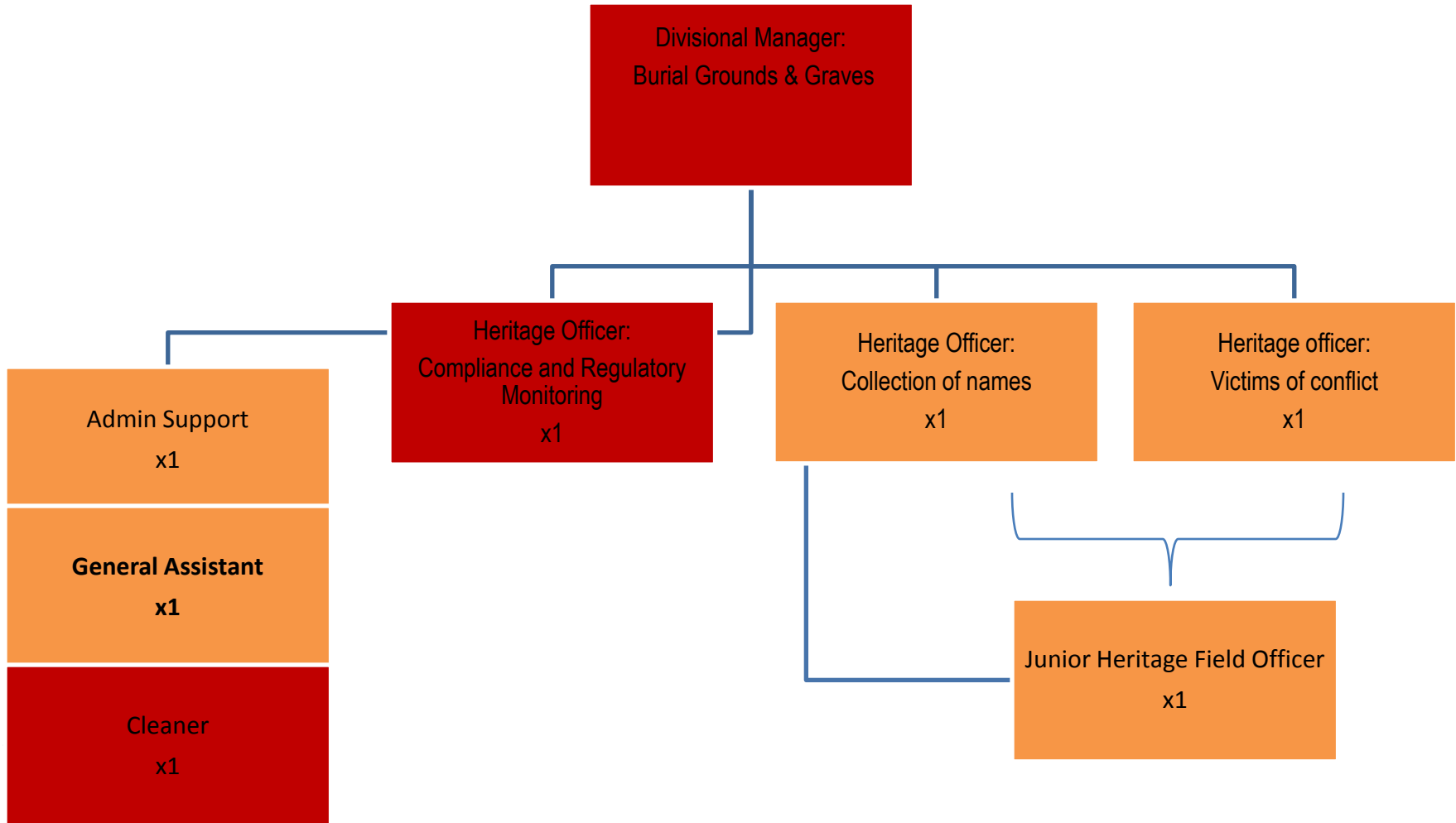
Heritage Objects Division



MUCH DIVISION



Burial Grounds and Graves Division



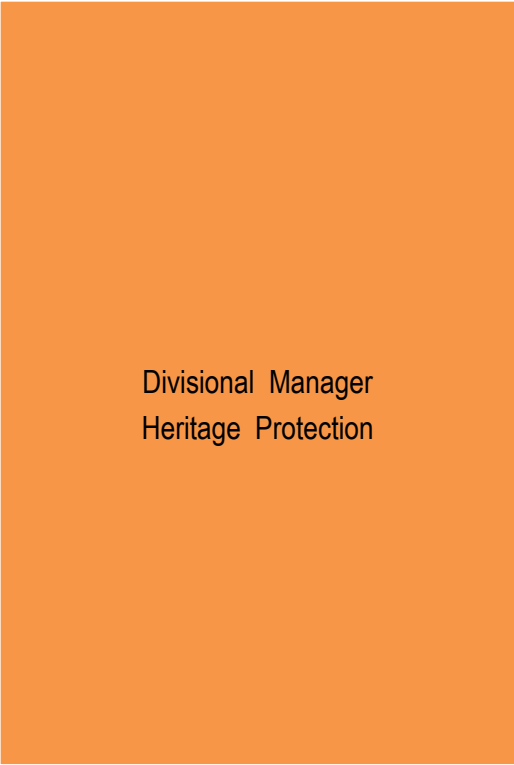
Grahamstown CentRE

```
graph TD; DM[Divisional Manager:  
Grahamstown CentRE] --- CR[Cleaner/Receptionist  
x1];
```

Divisional Manager:
Grahamstown CentRE

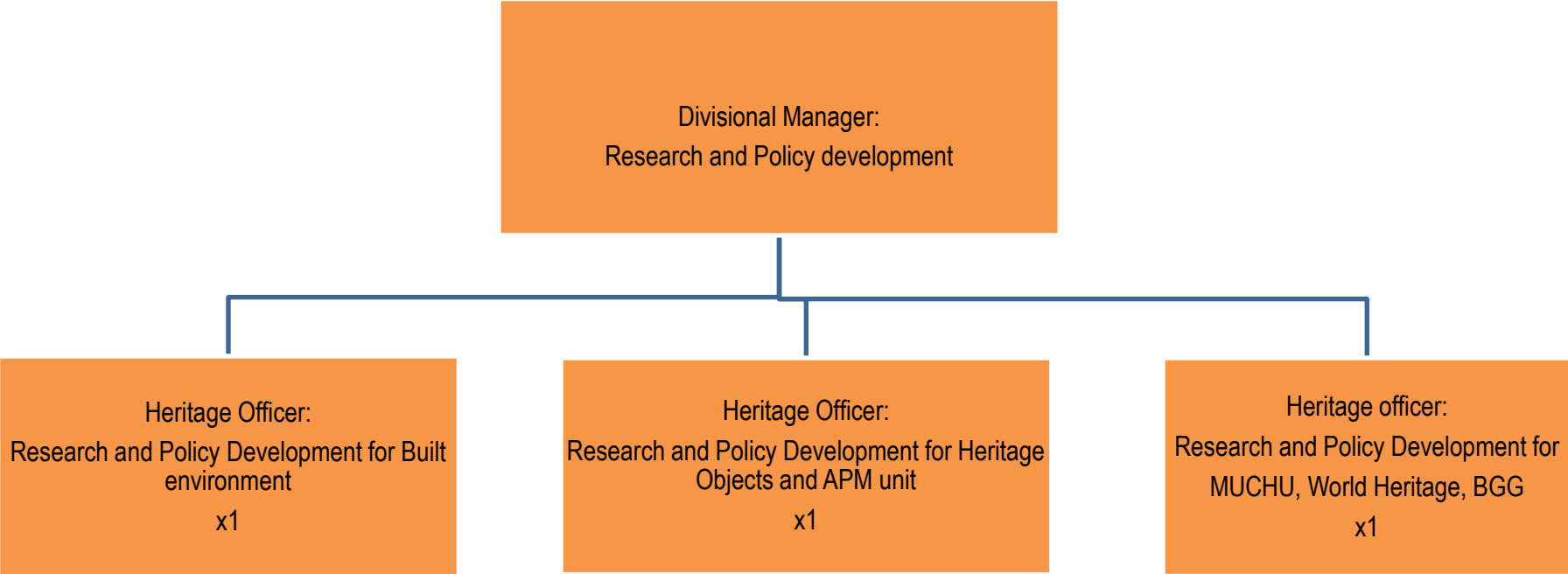
Cleaner/Receptionist
x1

Heritage Protection



Divisional Manager
Heritage Protection

Research and Policy development Division



OTHER Divisions

