



The Crime & Justice Hub Reflections on the 2012/13 South African Police Service Budget

**Presentation to
the Portfolio Committee on Police
National Assembly**

**Gareth Newham
Head: The Crime and Justice Programme
15 March 2012**



Overview

- Introduction
- The Crime & Justice Hub
- SAPS Personnel Trends
- SAPS Strategies
- SAPS Programmes
- Independent Complaints Directorate



Introduction

Institute for Security Studies (ISS) is an independent African policy research institute. Our work is aimed at contributing to a stable and peaceful Africa characterised by sustainable development, human rights, the rule of law, democracy and collaborative security.

The Crime and Justice Programme (CJP) of the ISS works to inform and influence policy and public discourse on crime, its prevention and criminal justice by conducting research, analysing policy, disseminating information and providing expertise as a contribution towards a safer and secure society.

The Crime & Justice Hub



- The C&J Hub was launched in December 2010
- The objective:
To improve transparency, engagement and accountability in crime and safety governance by providing a reliable, user-friendly, interactive source of information and analysis on crime, its prevention and the functioning of the criminal justice system in South Africa



Aimed to Benefit

- Policy Makers
- Oversight agencies
- Practitioners
- Researchers
- Academics & students
- Communities
- Media

Themes & Information





Crime and Justice Hub

Information and analysis sharing for a safer and just society

Institute for Security Studies | Institut d'Etudes de Securite
Knowledge empowers Africa | Le savoir emancipe l'Afrique



You are here.. : > Home Page

THE CRIME AND JUSTICE INFORMATION AND ANALYSIS HUB

QUICK ACCESS

New on Crimehub

View graphs and explanations for the latest crime trends

Hot Topics

2010/2011 crime statistics in a nutshell
Reliability, rationale and main trends

Multimedia

The Hub Multimedia brings the Crime and Justice Information Hub directly to you.

Highly Recommended

Map Viewer

View crime trends on a map of South-Africa

[more info](#)

< Previous

Next >

 Crime Maps	 Professional Policing	 Crime Trends	 Hot Topics
 Criminal Justice System	 Useful Data	 Safety Tips	 Youth Concerns
 Business Concerns	 International Visitors	 SA Crime Quarterly	 Crime Prevention

REGISTER

[Register on Crimehub](#)

THE SITE IS FUNDED BY

FOLLOW CRIMEHUB

SHARE CRIMEHUB

PARTNERS

Crime Line

InfoMerger

UPCOMING EVENTS

ISS 2nd INTERNATIONAL CONFERENCE National and international perspectives on crime reduction an...

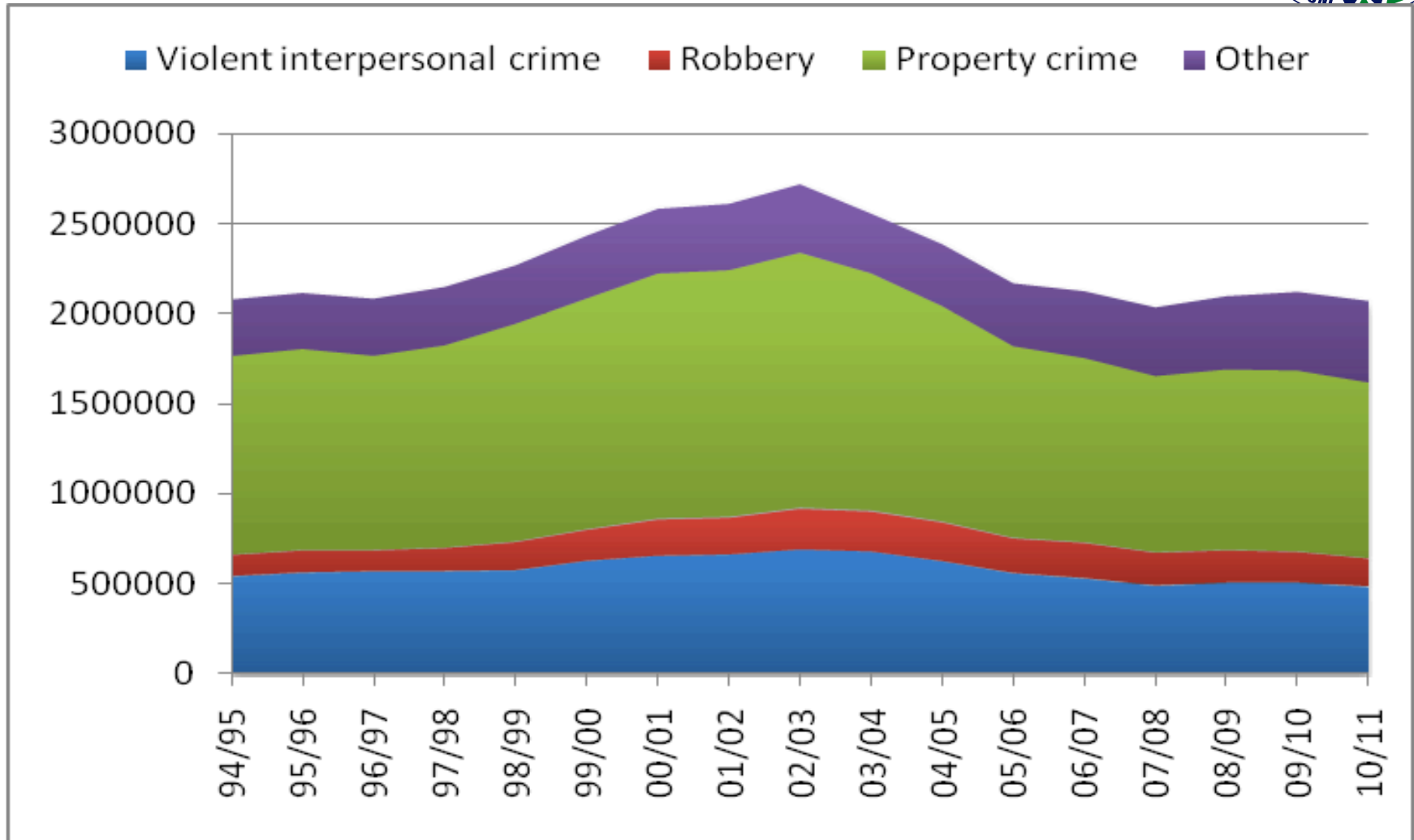
NEWS FEED

Walking the Talk? The South African Police Service Anti-Corruption Strategy

TWITTER FEED

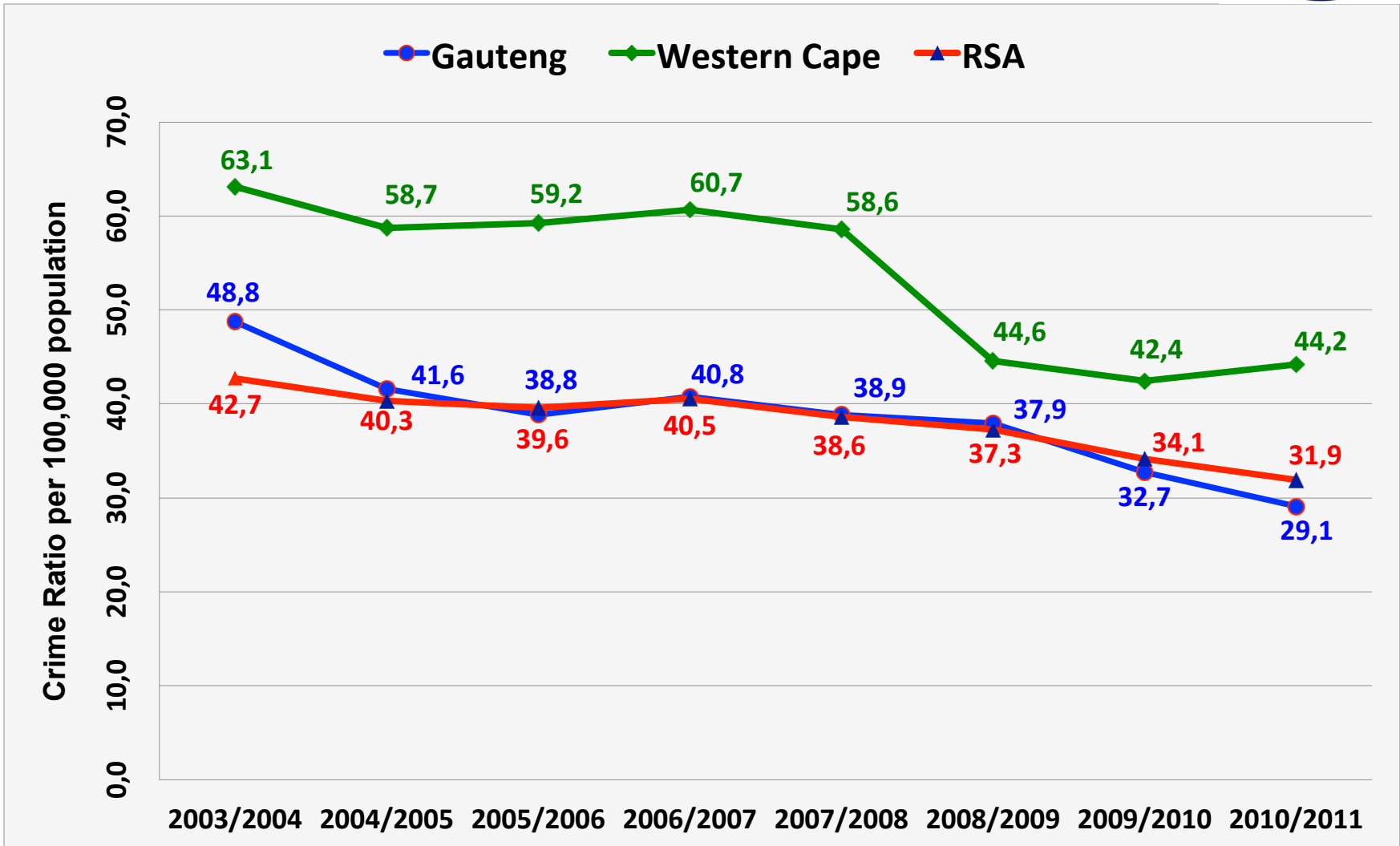
@CrimeHub: The new SAPS anti-corruption strategy can curb

Crime Trends in South Africa 1994/95 to 2010/11



National & Provincial Trends: Murder

2003/04 – 2010/11



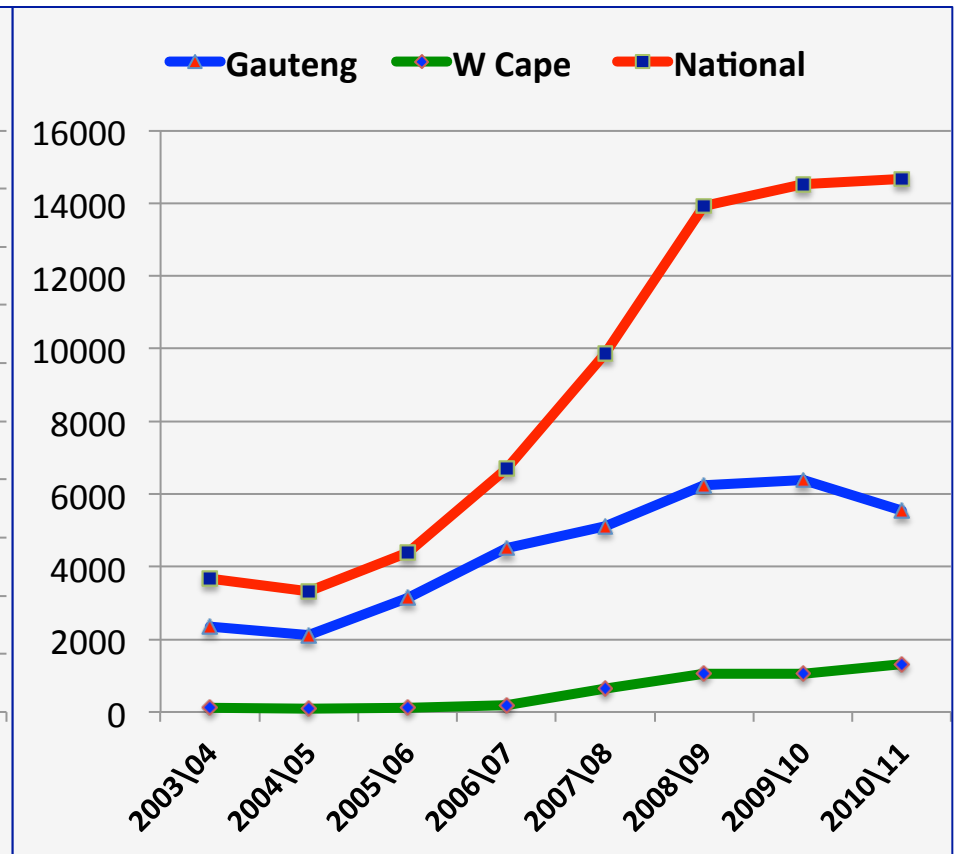
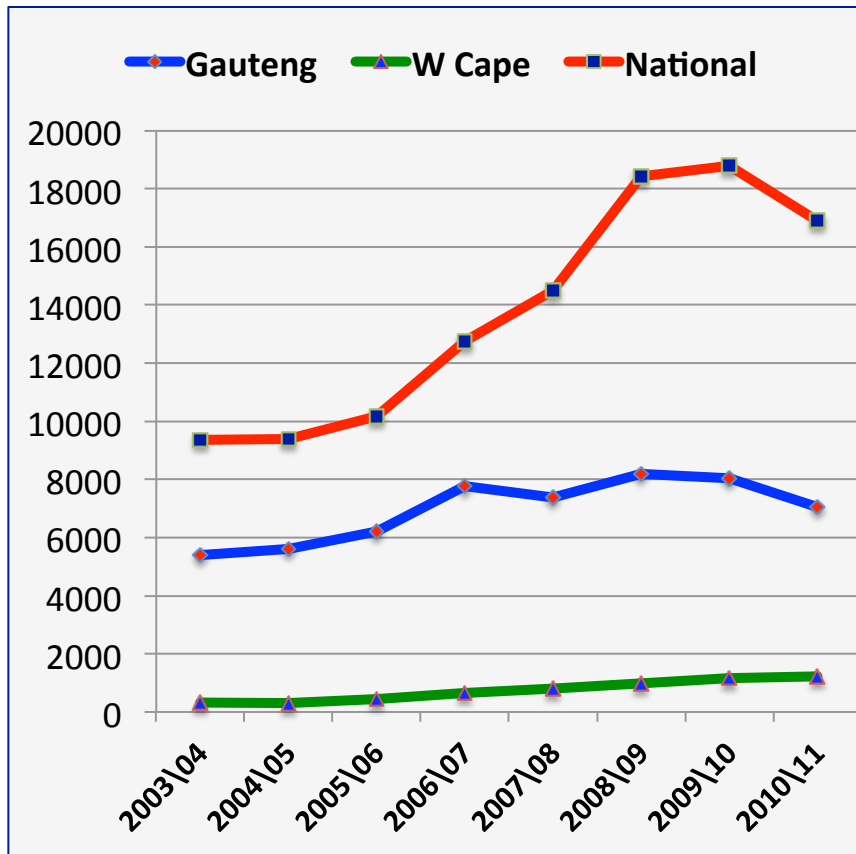
National and Provincial Trends

(Actual figures)



House robbery

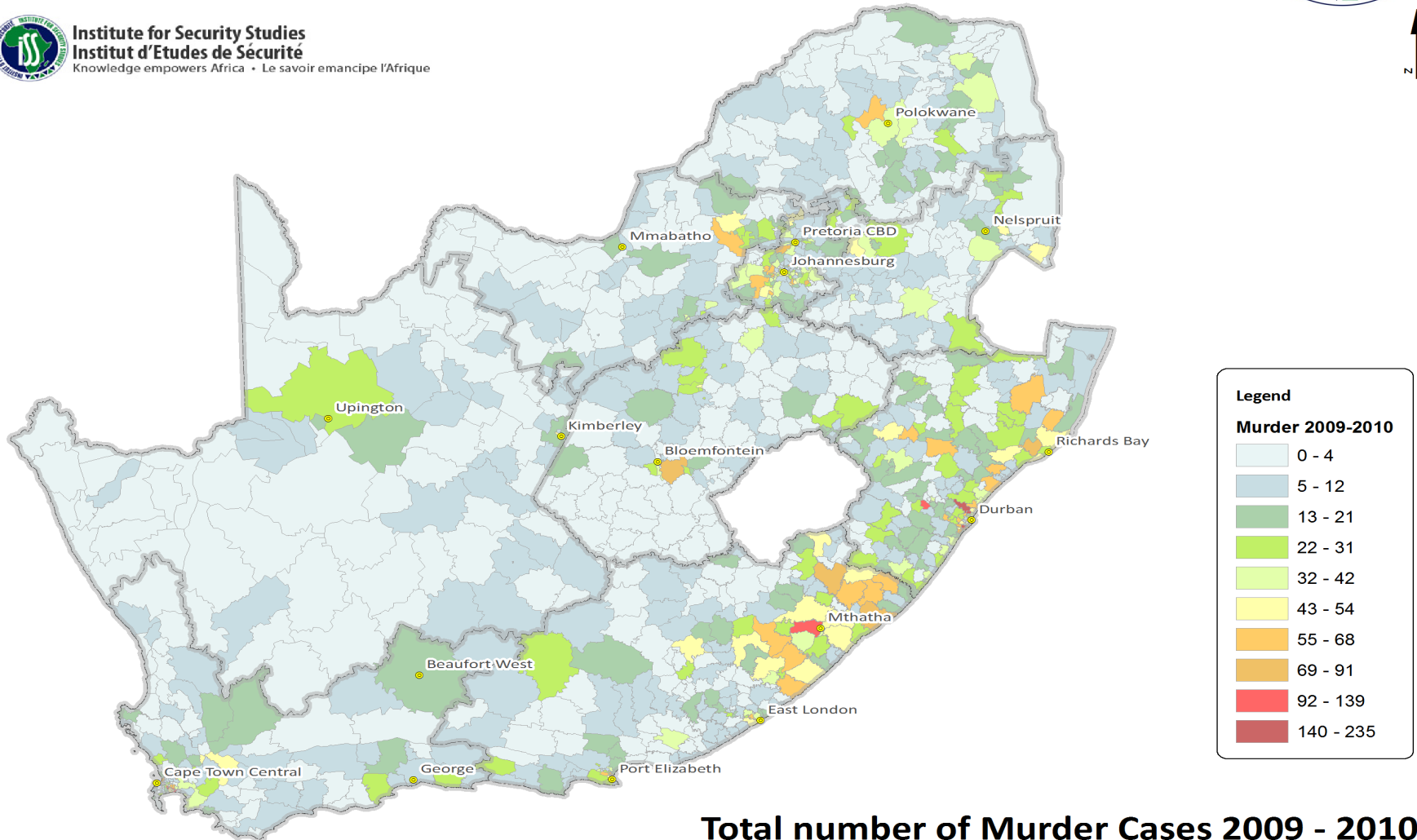
Business robbery



SA Murder Cases Distribution



 **Institute for Security Studies**
Institut d'Etudes de Sécurité
Knowledge empowers Africa • Le savoir émancipe l'Afrique



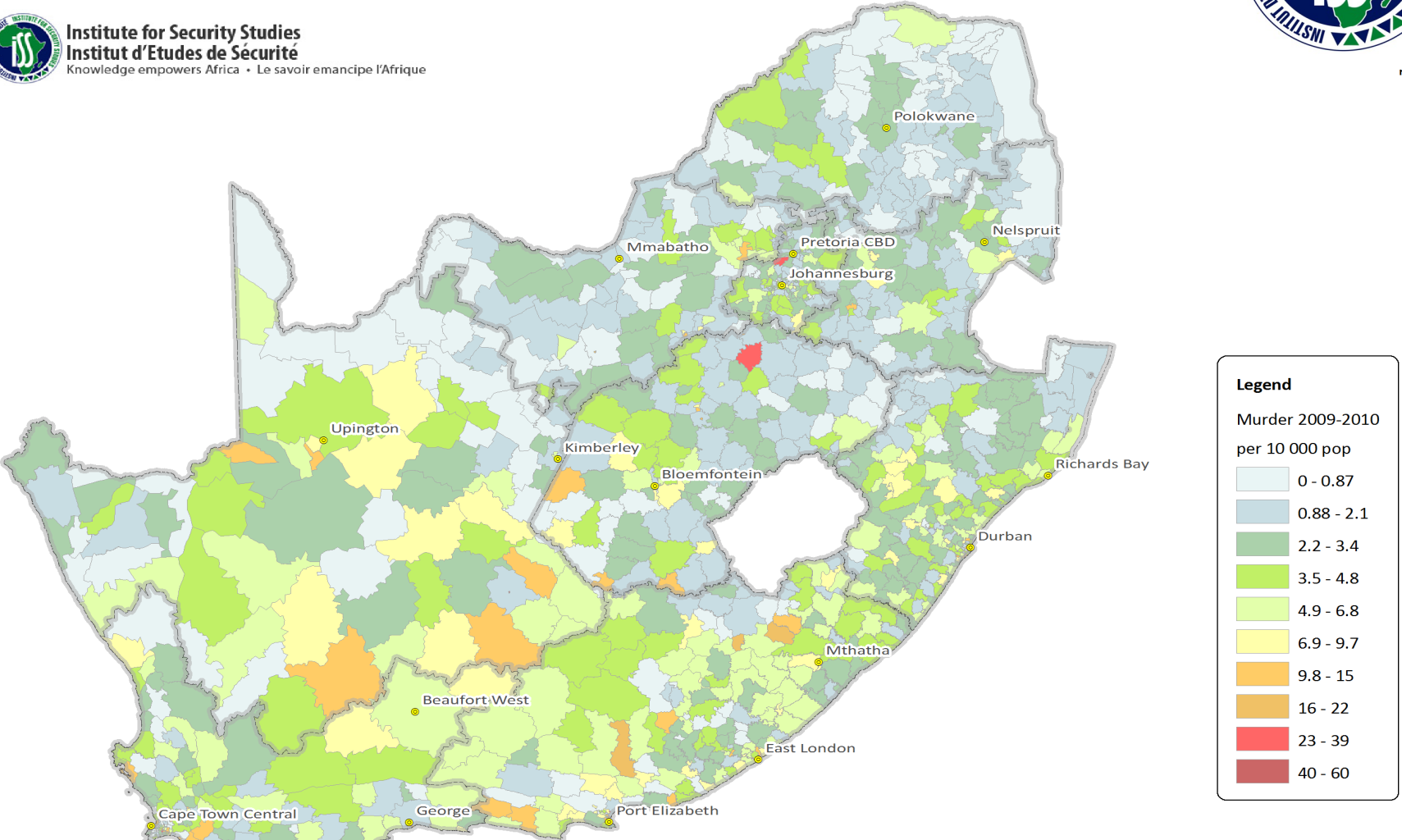
Total number of Murder Cases 2009 - 2010
Total number of cases per Police Precinct

SA Murder Ratios Distribution



Institute for Security Studies
Institut d'Études de Sécurité
 Knowledge empowers Africa • Le savoir émancipe l'Afrique

2



Legend

Murder 2009-2010
per 10 000 pop

0 - 0.87
0.88 - 2.1
2.2 - 3.4
3.5 - 4.8
4.9 - 6.8
6.9 - 9.7
9.8 - 15
16 - 22
23 - 39
40 - 60

Murder Cases per 10 000 population (2009 - 2010)

Ratio per Police Precinct

The Crime Map Viewer



Crime and Justice Hub

Information and analysis sharing for a safer and just society

Search

Institute for Security Studies | Institut d'Etudes de Sécurité
Knowledge empowers Africa | Le savoir émancipe l'Afrique



[Home](#) | [Crime Maps](#) | [Hot Topics](#) | [Topics](#) | [CJP Conference](#) | [Safety Tips](#) | [Multimedia](#) | [About us](#)

You are here... : > [Home Page](#) > [Crime Map Viewer](#)

Crime & Justice Hub Map

Start here

▶ [Select Crime types](#)

▼ [View the legend](#)

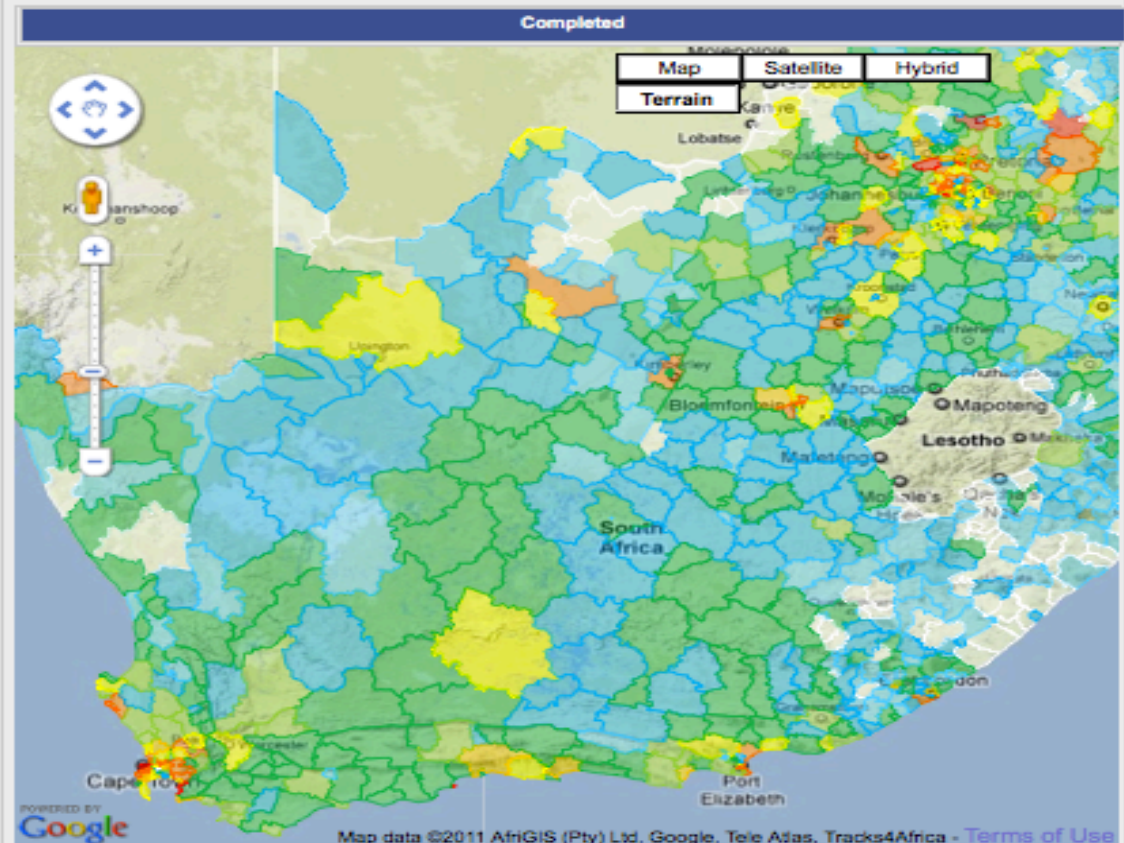
Below is the legend, this is a indication of all the colours according to the stats being displayed.

0 - 10
11 - 25
26 - 50
51 - 100
101 - 150
151 - 200
201 - 250
251 - 500
501 - 1000
1001+

▶ [Find your address](#)

▶ [View the tips](#)

Map Viewer



The Crime Map Viewer

Crime & Justice Hub Map

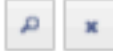
Start here

▶ Select Crime types

▶ View the legend

▼ Find your address

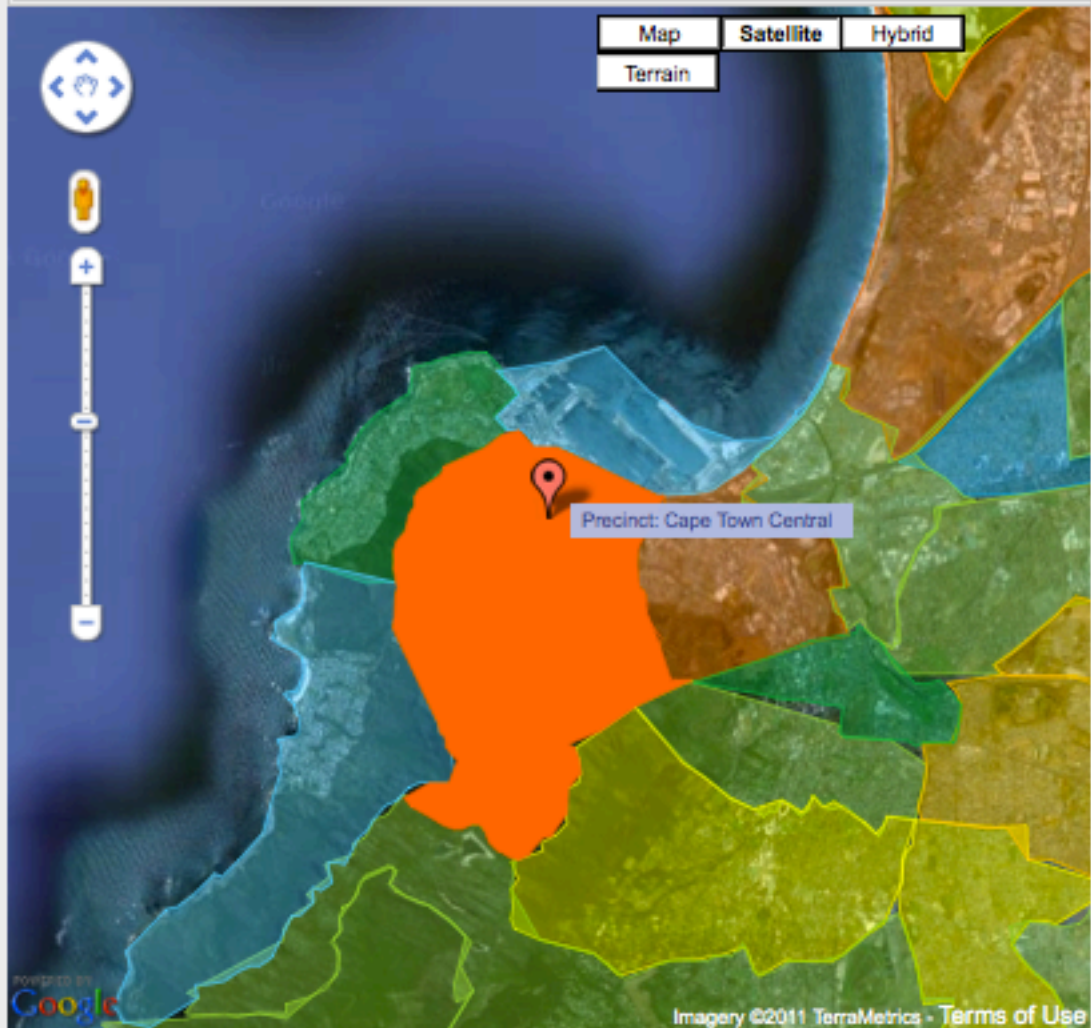
Cape Town



▶ View the tips

Map Viewer

Stats update completed!



The Crime Map Viewer



Data for Precinct: Cape Town Central

Details

Graph

Data



Precinct: Cape Town Central
Hectare: 103273
Population: 33629

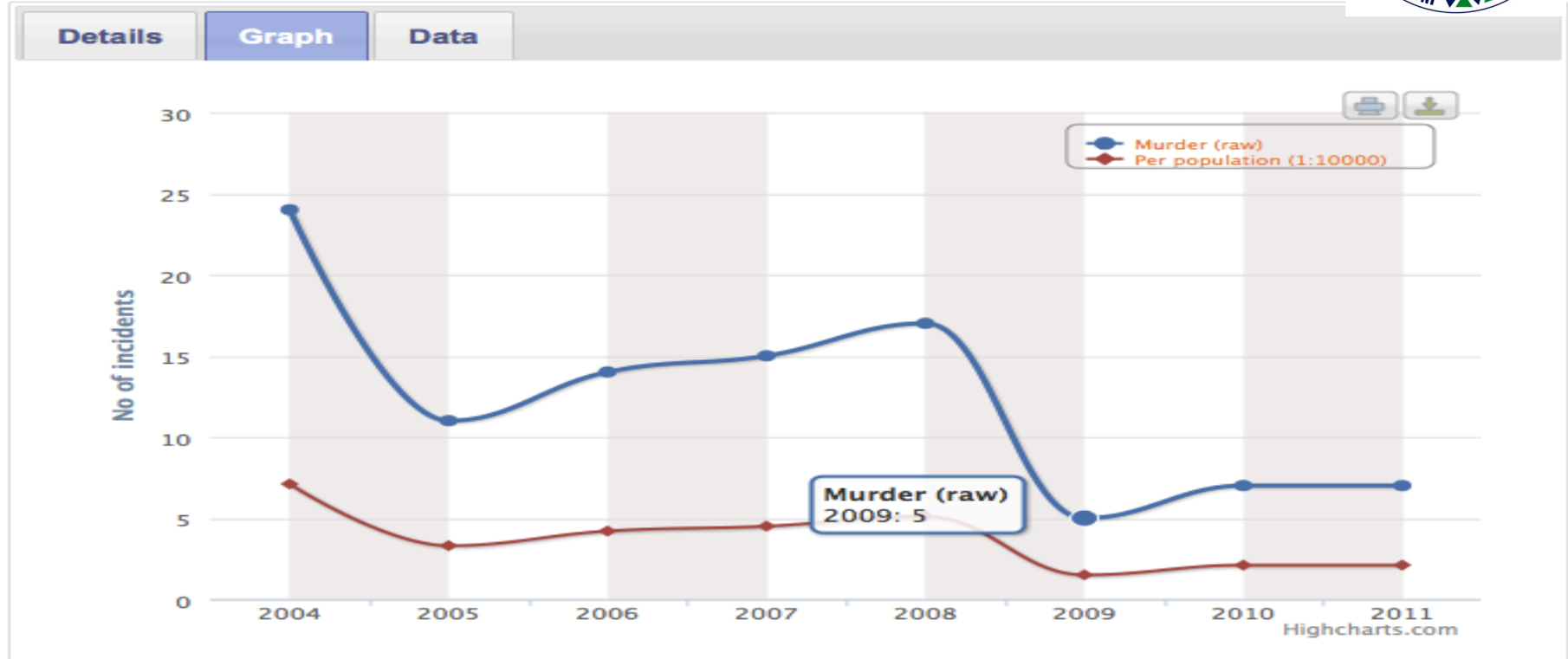
Google (Oudekraal Reserve)

Map data ©2011 AfrigIS (Pty) Ltd, Google, Tracks4Africa

The Crime Map Viewer



Data for Precinct: Cape Town Central



	2004	2005	2006	2007	2008	2009	2010	2011
Murder (raw)	24	11	14	15	17	5	7	7
Per population (1:10000)	7.1	3.3	4.2	4.5	5.1	1.5	2.1	2.1

Crime Hub: Demographic Profile Report



Control Search & Profile Help Crime statistics Level of service Accessibility indicators **Demographics** Land use dynamics

Layer: Precinct boundary Find: alex Profile: ISS Demographic Report Results: Alexander Bay, Alexandra, Alexandra Road, Alexandr

Zoom in Zoom out Print Request Info Point Report

Map Satellite

ISSMap Profiler

Print Close

ISS Profile Report

demographic profile
SPATIAL PROFILE OF POLICE PRECINCT

LOCATION OF THE PRECINCT *Source: Municipal Demarcation Board (2011)*

Name of precinct: **Alexandra**
 Province: **Gauteng - 100.00 %**
 Local municipality: **City of Johannesburg Metropolitan Municipality (JHB) - 100.00 %**
 District municipality: **City of Johannesburg - 100.00 %**
 Size (hectares): **745.1884 Hectares**

DEMOGRAPHIC CHARACTERISTICS *Source: StatsSA – Census 2001, Community Survey (2007)*

Total population within precinct (2010): **195660.0000**
 Population density within the precinct: **259.025 persons per hectare**

Age groups in the precinct:

	0 – 4	5 – 19	20 – 34	35 – 65	65 plus
Percentage of persons within age group	9	20	41	28	2

Gender (Percentage)

	Male:	Female:
	52.8	47.2

Percentage of households living in informal dwellings: **34.5**

Annual household income: *Percentage of households within income group*

R0 – R38 000	R38 000 – R76 000	R76 000 – R153 000	R153 000 – R307 000	R307 000 – R614 000	> R614 000
65	21	10	3	1	0

Developed by Mandala GIS and Software IT Solutions.
 Data is provided for informational purposes only. Mandala GIS or Software IT Solutions shall not be held liable for any errors in the content, or for any actions taken in reliance thereon.

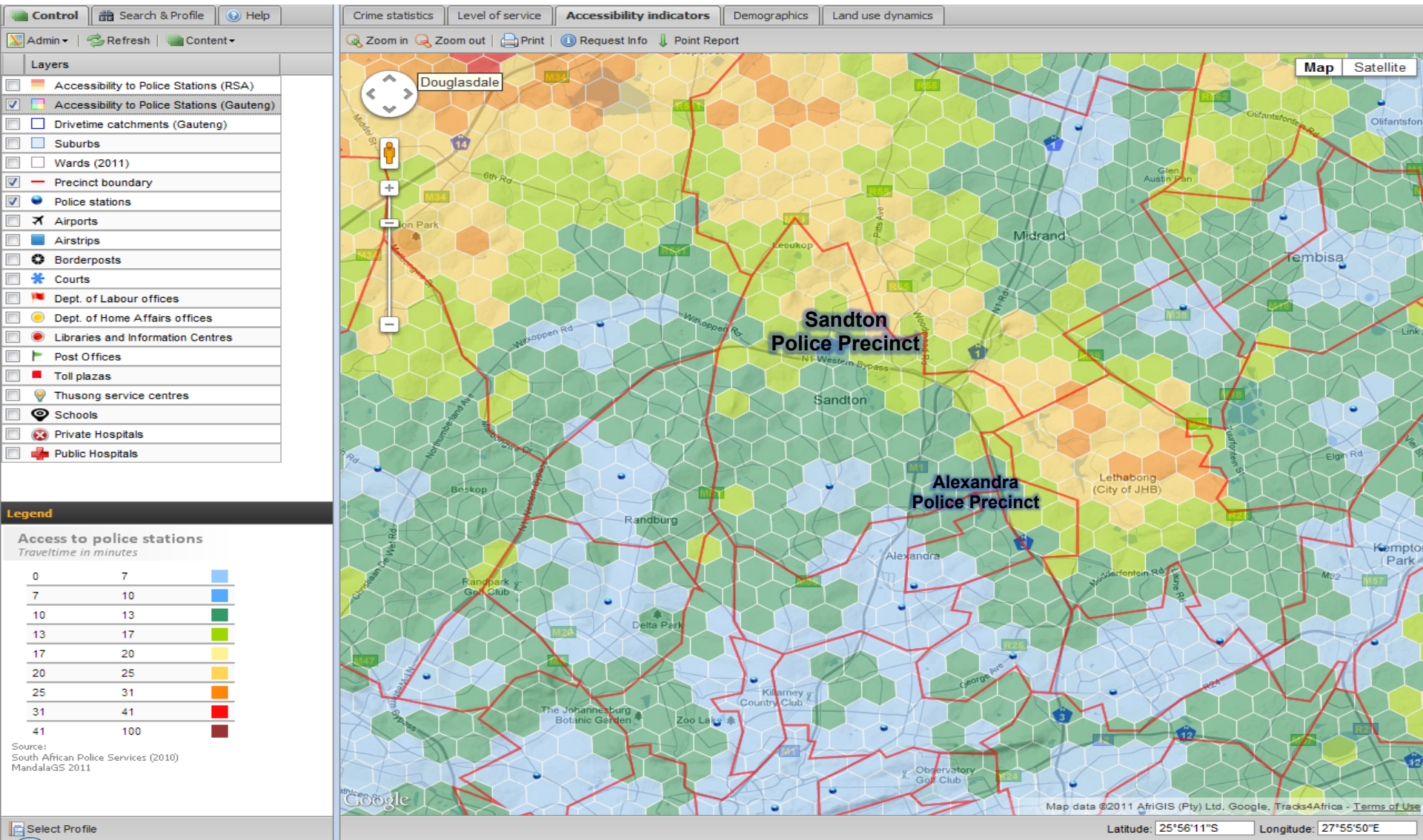
Template version 4.00

Alexandra Police Precinct

Map data ©2011 AfriGIS (Pty) Ltd, Google, Tracks4Africa - Terms of Use

Latitude: 26°04'42"S Longitude: 28°02'54"E

SAPS Accessibility Indicators: Travel time to police stations

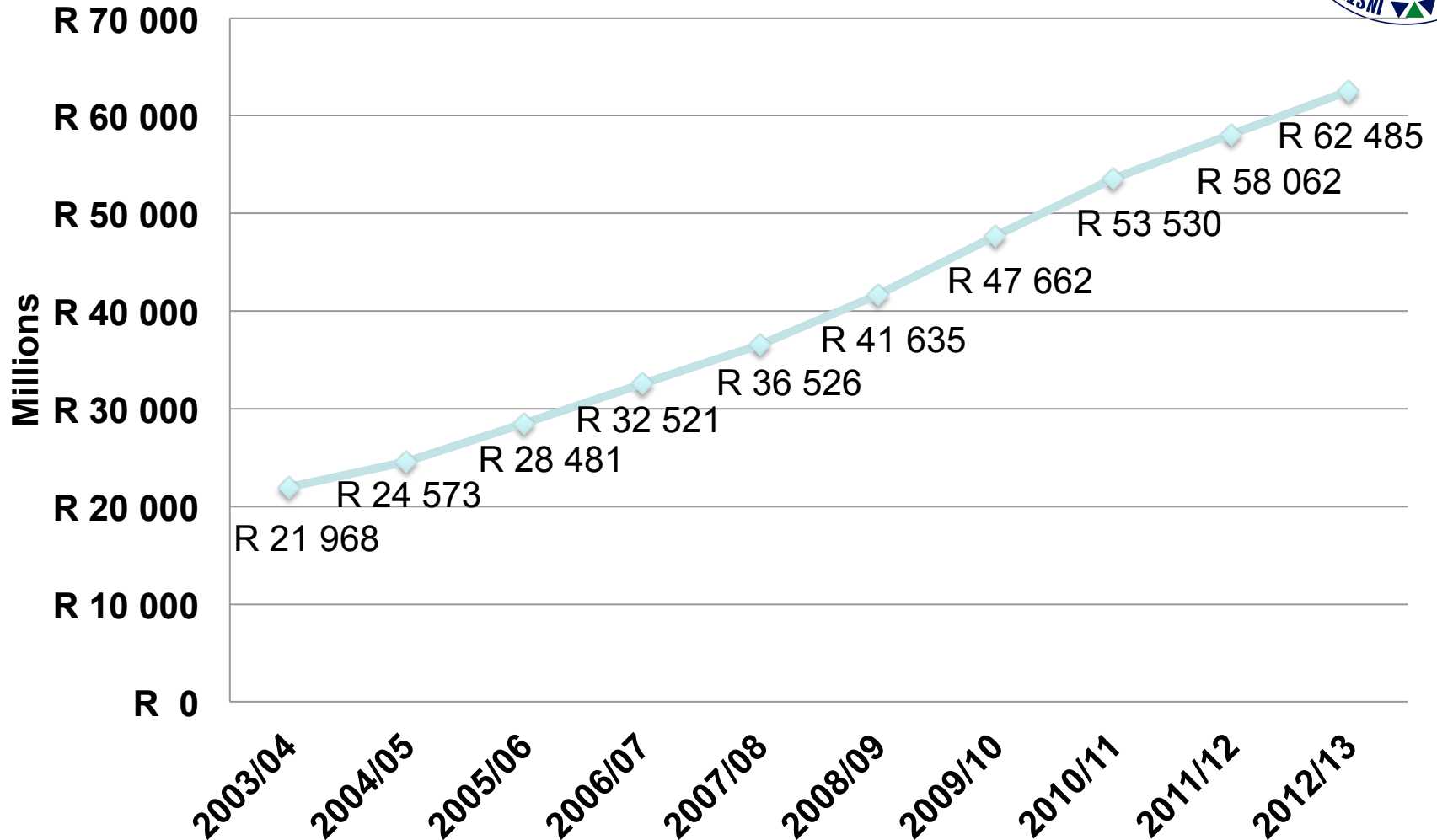


Reflections on SAPS Budget for 2012/13



- Implementation of key strategies
- SAPS Personnel changes
- Detectives Services
- Crime Intelligence
- Independent Complaints Directorate

SAPS Budget 2002/03 to 2012/13

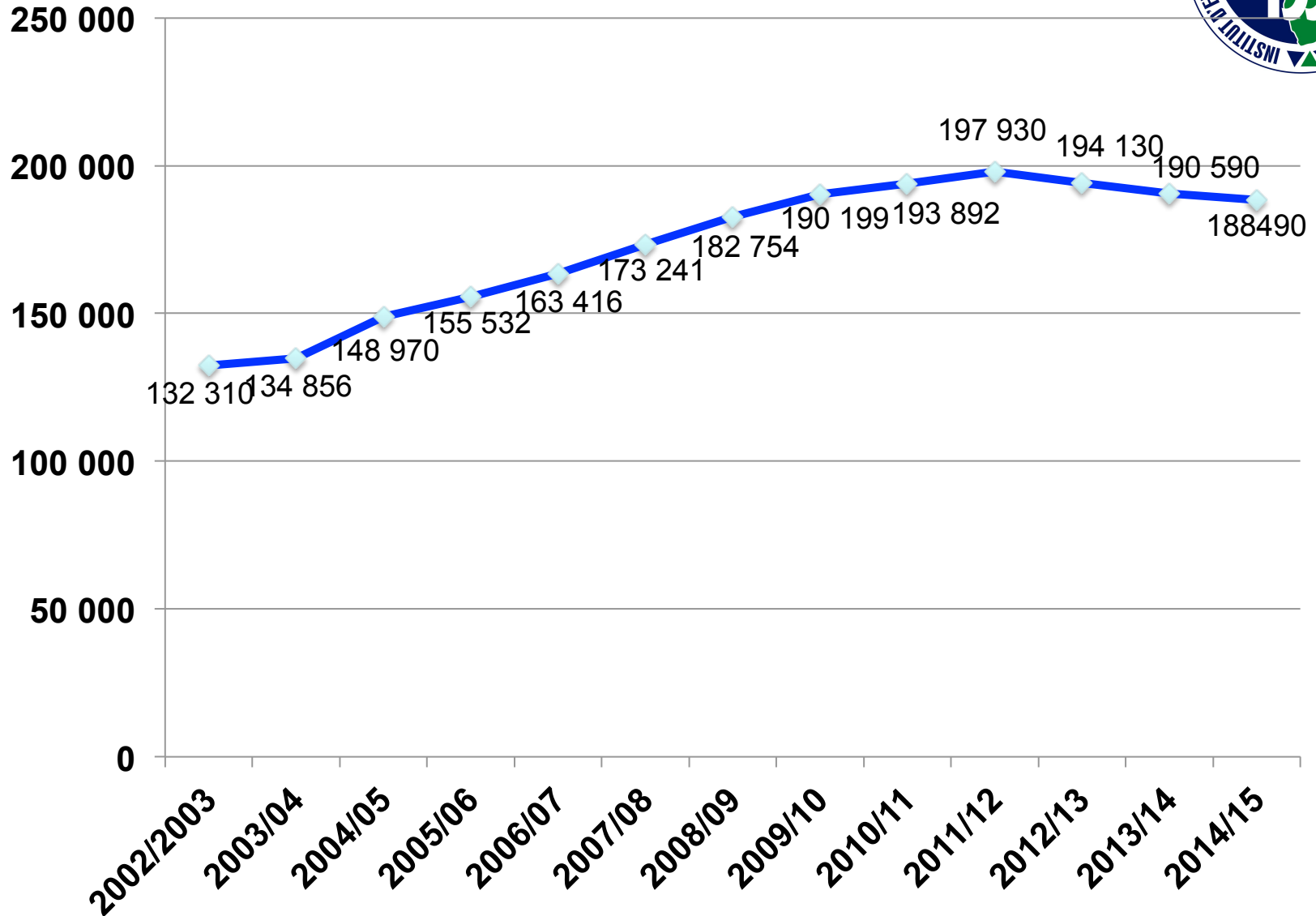


SAPS Strategy Implementation



- There are various strategies being implemented in the SAPS
 - The SAPS Anti-Corruption Strategy,
 - The Rural Safety Strategy,
 - Ministerial Plan to prevent killings of police officials.
- To be effectively implemented these strategies will require clear implementation plans with adequate budgets and resources.
- It is recommended that the SAPS present annually on the following:
 - The particular resources dedicated to these strategies
 - The implementation plans and progress made against measurable indicators;
 - Indicators that demonstrate the extent to which the strategies are having an impact.

SAPS Personnel 2002/03 to 2012/13



SAPS Personnel



- SAPS has experienced substantial growth - personnel grew by 50% (65 620 posts) between 2002/03 to 2011/2012.
- This has contributed to improved police visibility but has not necessarily translated into more effective policing.
- International experience shows that mass police recruitment can place strain on systems for recruitment, training, & management.
- This results in other problems such as greater numbers of police officials who do not possess the ethos, attitude, or skills required for professional policing.
- Consequently challenges of poor police service delivery, misconduct, criminality and corruption increase.



SAPS Personnel (Cont)

- The planned reduction in personnel to 188 490 by 2014/15 is welcomed if it is a reflection of the move from “quantity to quality.”
- Questions about the reductions are as follows:
 - Is this only to be achieved through natural attrition?
 - To what extent will dismissals of those involved in corruption and misconduct contribute to reductions (in light of the over 600 Gauteng police officials charged with corruption since January 2011).
 - Are there any particular divisions, levels (i.e. national, provincial, station) or geographical areas where cuts will be prioritised?
 - Will this affect staffing levels at police station level given plans to increase the numbers of police stations?

Detective Services



- We welcome the move to strengthen the investigative capacity of the SAPS through increasing the number of detectives to 38 152 by 2014/15.
- We also welcome the recognition of the need for specialisation with regards to investigations.
- Increased focus should be given to:
 - The capacity and performance of existing specialised units such as the commercial crime & organised crime units.
 - The reintroduction of units such as the Family Violence, Child Abuse & Sexual Offence units and the SAPS internal anti-corruption units
- Increased focus should be given to the training, management and mentorship of the detectives to ensure that they are adequately skilled.
- Close attention must be given to case flows, particularly cases that roll-over from year-to-year, the basis on which cases are closed, withdrawn from court, and conviction rates.



Crime Intelligence

- SAPS Crime intelligence (CI) is correctly identified as needing to play a central role in the fight against crime.
- However, there are serious concerns about the leadership and management of the SAPS Crime Intelligence Division.
- Focus should be on how this division demonstrates that it is providing the support required by other divisions & levels in the SAPS.
- This includes the types of products & practical support that Crime Intelligence provides to other divisions.
- Clarity must also be sought on how this impacts on those involved in crime (e.g. in what way does CI lead to arrests, supports investigations and convictions of those involved in organised crime).



Independent Complaints Directorate (ICD)

- Given the expanded mandate of the ICD provided by the new IPID legislation we welcome the average annual 14.9% budget increases planned until 2014 resulting in an 89% personnel increase (from 272 to 515)
- Given the new crime types that the extended mandate requires the ICD to investigate (i.e. torture, rape, systemic corruption), specialised investigative training and capacity is required.
- Focus will therefore need to be on the training and managerial support provided to the investigators.
- Attention will also have to be given to the forensic support that the ICD has access to and the costs this incurs.
- Additional consultancy costs may be incurred due to the inclusion of corruption or 'systemic corruption' related investigations.



The ISS thanks the Portfolio Committee on Police for the opportunity to make an input at this hearing.

☎: +27 12 346 9500

💻: www.issafrica.org/crimehub

💻: gnewham@issafrica.org