



DIGITAL TERRESTRIAL TELEVISION (DTT) MIGRATION: Sentech Readiness Report

PRESENTATION TO THE PORTFOLIO COMMITTEE ON COMMUNICATIONS

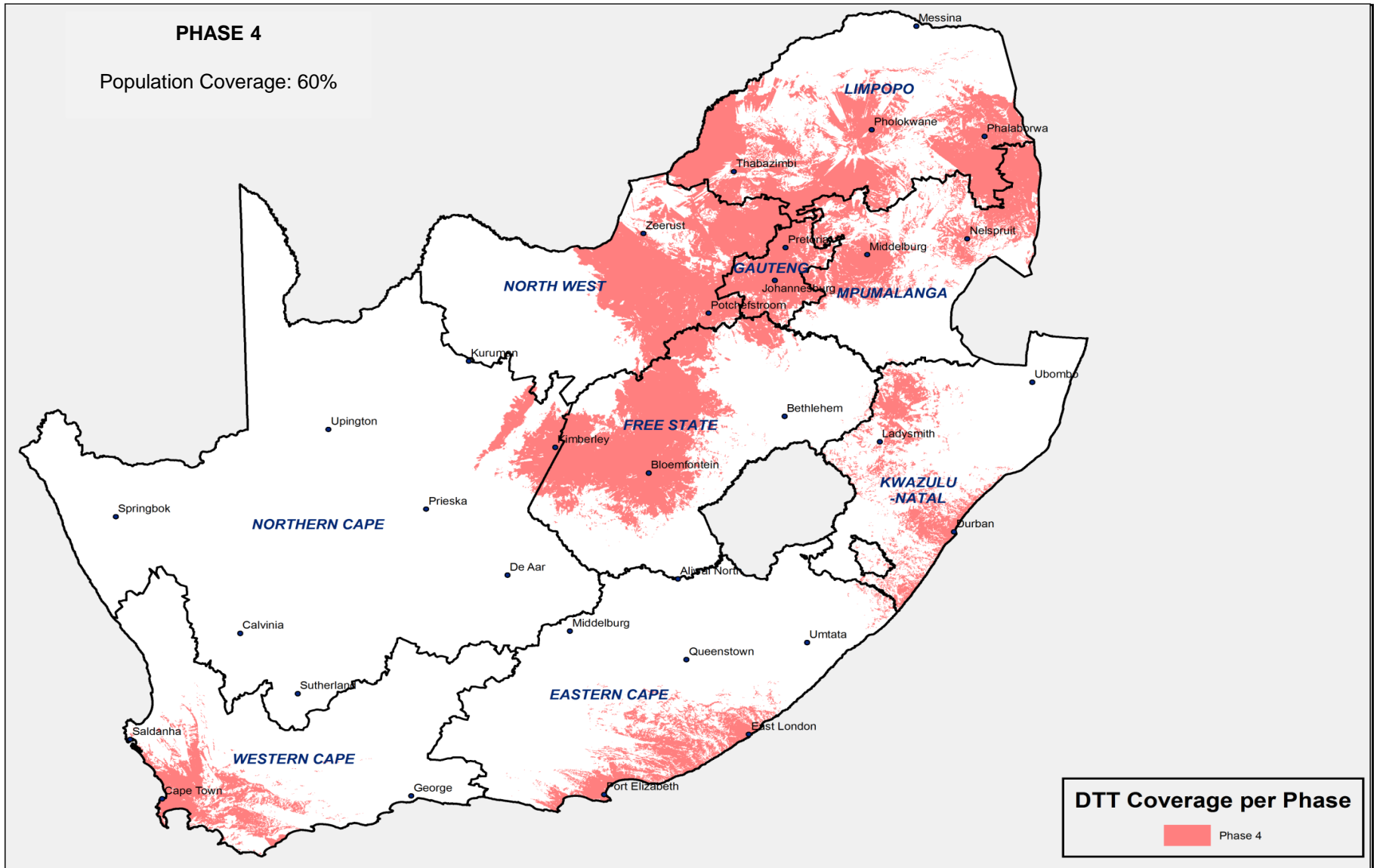
19 September 2011

- Digital Terrestrial Television (DTT) is a project wherein Sentech is responsible for providing the network infrastructure to enable broadcasters to migrate from analogue to digital television. The DTT process commenced in 2006 and DVB-T was adopted as the country's standard for digital migration. Sentech then switched on the digital signal in October 2008 and has been operating a trial for SABC 1, 2, 3 and e.tv.
- In January 2011, the Minister of Communications announced that the DTT standard would be upgraded to DVBT-2. In addition, the analogue switch-off date was confirmed as 31 December 2013.
- At the end of March 2011, Sentech had achieved expanded coverage and was ready to radiate digital signals to about 60% of the South African population based on the DVB-T standard. These sites will be upgraded to DVB-T2 and we project that all of them will have converted by 31 March 2012 to provide a fully operational DTT network in support of the official launch in the country.
- We projected that by March 2012, we will have reached 74% population coverage, and whilst we will certainly reach more than 60% coverage, we acknowledge that we may not reach the full 74%. The estimated period to cover the remaining 14 % has been affected by the need to capacitate our Supply Chain Function at all levels of Governance.

- During the period under review the Gauteng analogue frequency migration for CSN at Pretoria North was completed and the M-Net migration at Cashan continued. The M-Net transmitter at Brixton tower was upgraded and a Single Frequency Network (SFN) trial is being conducted.

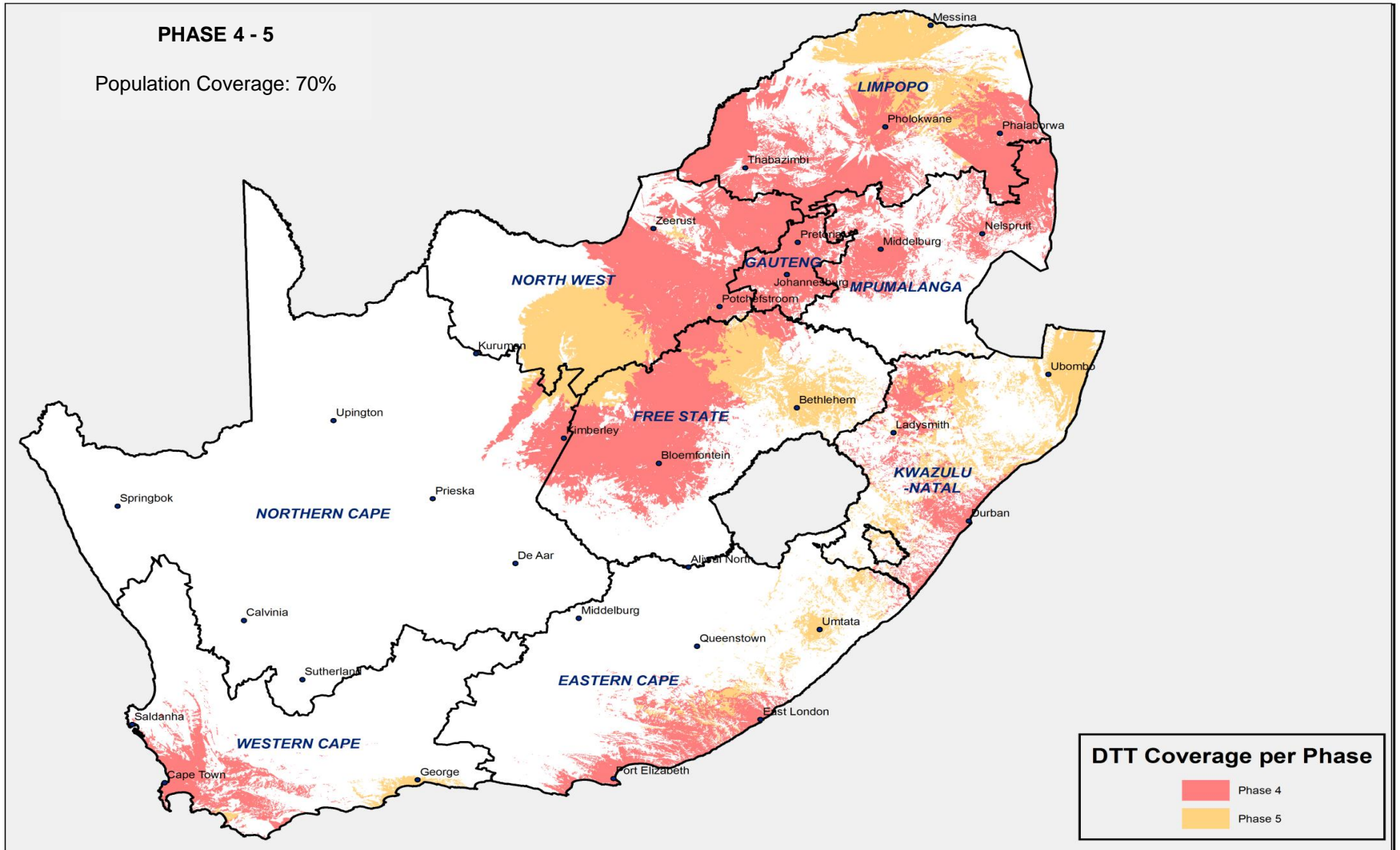
- Sentech is currently focusing on converting completed sites to DVB-T2 technology and continue with the project rollout. Below are current project macro activities to be executed within this financial year:
 - Trial DVB-T2 technology with clients.
 - Procure equipment, execute and complete Phase 5 of the network roll out.
 - Procure equipment and execute Phase 6 of the network roll out.
 - Finalise DTT Tariff Model.
 - Establish content links between clients and Sentech head-end systems.
 - Conclude service contracts with the incumbent broadcasters.

PHASES 1 - 4											
TRANSMITTER SITES	TX's	PIE	COMBINERS	ANTENNAS	FEEDER CABLES	ELECTRICAL	HVAC	BUILDING	RBR LINKING	TVRO's	DVB-T2 READY
BEZ VALLEY	Ready	N/A	Ready	Ready	Ready	Ready	Ready	Ready	Ready	N/A	7/Oct/11
HELDERKRUIJN	Ready	Ready	Ready	Ready	Ready	Ready	Ready	Ready	Ready	N/A	28/Oct/11
JOHANNESBURG	Ready	Ready	Ready	Ready	Ready	Ready	Ready	Ready	Ready	N/A	15/Jul/11
PRETORIA	Ready	Ready	Ready	Ready	Ready	Ready	Ready	Ready	Ready	N/A	Ready
RUSTENBURG	Ready	Ready	Ready	Ready	Ready	Ready	Ready	Ready	Ready	N/A	Ready
SUNNYSIDE	Ready	Ready	Ready	Ready	Ready	Ready	Ready	Ready	Ready	Ready	29/Jul/11
WELVERDIEND	Ready	Ready	Ready	Ready	Ready	Ready	Ready	Ready	Ready	N/A	Ready
BLOEMFONTEIN	Ready	Ready	Ready	Ready	Ready	30/Sep/11	Ready	Ready	Ready	N/A	Ready
CAPE TOWN	Ready	Ready	Ready	Ready	Ready	Ready	Ready	Ready	Ready	N/A	Ready
DURBAN	Ready	Ready	Ready	Ready	Ready	Ready	Ready	Ready	Ready	N/A	15/Jul/11
FISHHOEK	Ready	Ready	Ready	Ready	Ready	Ready	Ready	Ready	Ready	Ready	N/A
HEIDELBERG	Ready	N/A	Ready	Ready	Ready	Ready	Ready	Ready	Ready	Ready	N/A
LINMEYER	Ready	N/A	Ready	Ready	Ready	Ready	Ready	Ready	Ready	Ready	N/A
MENLO PARK	Ready	N/A	Ready	Ready	Ready	Ready	Ready	Ready	Ready	Ready	N/A
MONDEOR	Ready	N/A	Ready	Ready	Ready	Ready	Ready	Ready	Ready	Ready	N/A
MULBARTON	Ready	N/A	Ready	Ready	Ready	Ready	Ready	Ready	Ready	Ready	N/A
OVERPORT	Ready	Ready	Ready	Ready	Ready	Ready	Ready	Ready	Ready	N/A	Ready
POTGIETERSRUS	Ready	Ready	Ready	Ready	Ready	Ready	Ready	Ready	Ready	N/A	Ready
PRETORIA NORTH	Ready	N/A	Ready	Ready	Ready	Ready	Ready	Ready	Ready	Ready	N/A
STELLENBOSCH	Ready	N/A	Ready	Ready	Ready	30/Jun/11	Ready	Ready	Ready	Ready	N/A
TABLE MOUNTAIN	Ready	N/A	Ready	Ready	Ready	30/Jun/11	Ready	30/Jun/11	Ready	Ready	N/A
THE BLUFF	Ready	N/A	Ready	Ready	Ready	Ready	Ready	Ready	Ready	Ready	N/A
TYGERBERG	Ready	Ready	Ready	Ready	Ready	Ready	Ready	Ready	Ready	N/A	Ready
VERULAM	Ready	N/A	Ready	Ready	Ready	Ready	Ready	Ready	Ready	Ready	N/A
EAST LONDON	Ready	Ready	Ready	Ready	Ready	Ready	Ready	Ready	Ready	N/A	Ready
KIMBERLEY	30/Aug/11	30/Aug/11	30/Aug/11	Ready	30/Sep/11	30/Aug/11	Ready	Ready	Ready	N/A	15/Jul/11
NELSPRUIT	Ready	Ready	Ready	Ready	Ready	Ready	Ready	Ready	Ready	N/A	15/Jul/11
ZEERUST	29/Jul/11	29/Jul/11	Ready	Ready	Ready	15/Jul/11	Ready	Ready	Ready	N/A	15/Jul/11
AMANDA GLEN	23/Sep/11	N/A	7/Oct/11	7/Oct/11	Ready	9/Sep/11	Ready	26/Aug/11	7/Oct/11	N/A	14/Oct/11
AURORA	23/Sep/11	N/A	7/Oct/11	7/Oct/11	Ready	9/Sep/11	Ready	Ready	7/Oct/11	N/A	14/Oct/11
CLIFTON	23/Sep/11	N/A	7/Oct/11	7/Oct/11	Ready	9/Sep/11	Ready	26/Aug/11	7/Oct/11	N/A	14/Oct/11
DESPATCH	Ready	N/A	Ready	Ready	Ready	Ready	Ready	Ready	Ready	Ready	N/A
HOUT BAY	Ready	N/A	Ready	Ready	Ready	Ready	Ready	Ready	Ready	Ready	N/A
PORT ELIZABETH	Ready	Ready	Ready	Ready	Ready	30/Sep/11	Ready	Ready	Ready	N/A	Ready
PORT ELIZABETH CITY	30/Sep/11	N/A	Ready	Ready	Ready	Ready	30/Sep/11	Ready	30/Sep/11	N/A	28/Oct/11
SEA POINT	Ready	N/A	Ready	Ready	Ready	Ready	Ready	Ready	Ready	Ready	N/A
SIMONSTOWN	Ready	N/A	Ready	Ready	Ready	Ready	Ready	Ready	Ready	Ready	N/A
GRAHAMSTOWN	Ready	Ready	Ready	Ready	Ready	Ready	Ready	Ready	Ready	N/A	Ready
GRABOUW	23/Sep/11	N/A	7/Oct/11	7/Oct/11	7/Oct/11	9/Sep/11	16/Sep/11	26/Aug/11	7/Oct/11	N/A	14/Oct/11
HOEDSPRUIT	Ready	Ready	Ready	Ready	Ready	Ready	Ready	Ready	Ready	N/A	Ready
PORT SHEPSTONE	Ready	Ready	Ready	Ready	Ready	Ready	Ready	Ready	Ready	N/A	Ready
FRANSCHHOEK	Ready	N/A	Ready	Ready	Ready	Ready	Ready	Ready	Ready	Ready	N/A
KLERKSDORP	30/Sep/11	30/Sep/11	Ready	Ready	Ready	30/Sep/11	Ready	Ready	Ready	N/A	15/Jul/11
MIDDELBURG	30/Sep/11	30/Sep/11	Ready	Ready	Ready	30/Sep/11	Ready	Ready	Ready	N/A	15/Jul/11
PAARL	Ready	Ready	Ready	Ready	Ready	Ready	Ready	Ready	Ready	N/A	Ready
PIETERMARITZBURG	30/Jul/11	30/Jul/11	30/Jul/11	Ready	Ready	30/Jul/11	30/Jul/11	30/Jul/11	30/Jul/11	30/Jul/11	30/Jul/11
THABAZIMBI	Ready	Ready	31/Aug/11	Ready	Ready	Ready	Ready	Ready	Ready	N/A	17/Jul/11
VILLIERSDORP	Ready	Ready	Ready	Ready	Ready	Ready	17/Sep/11	Ready	Ready	N/A	30/Jul/11
THEUNISEN	30/Aug/11	30/Aug/11	Ready	Ready	Ready	30/Aug/11	Ready	Ready	Ready	N/A	15/Jul/11
GLENCOE	Ready	Ready	Ready	Ready	Ready	Ready	Ready	Ready	Ready	N/A	30/Aug/11

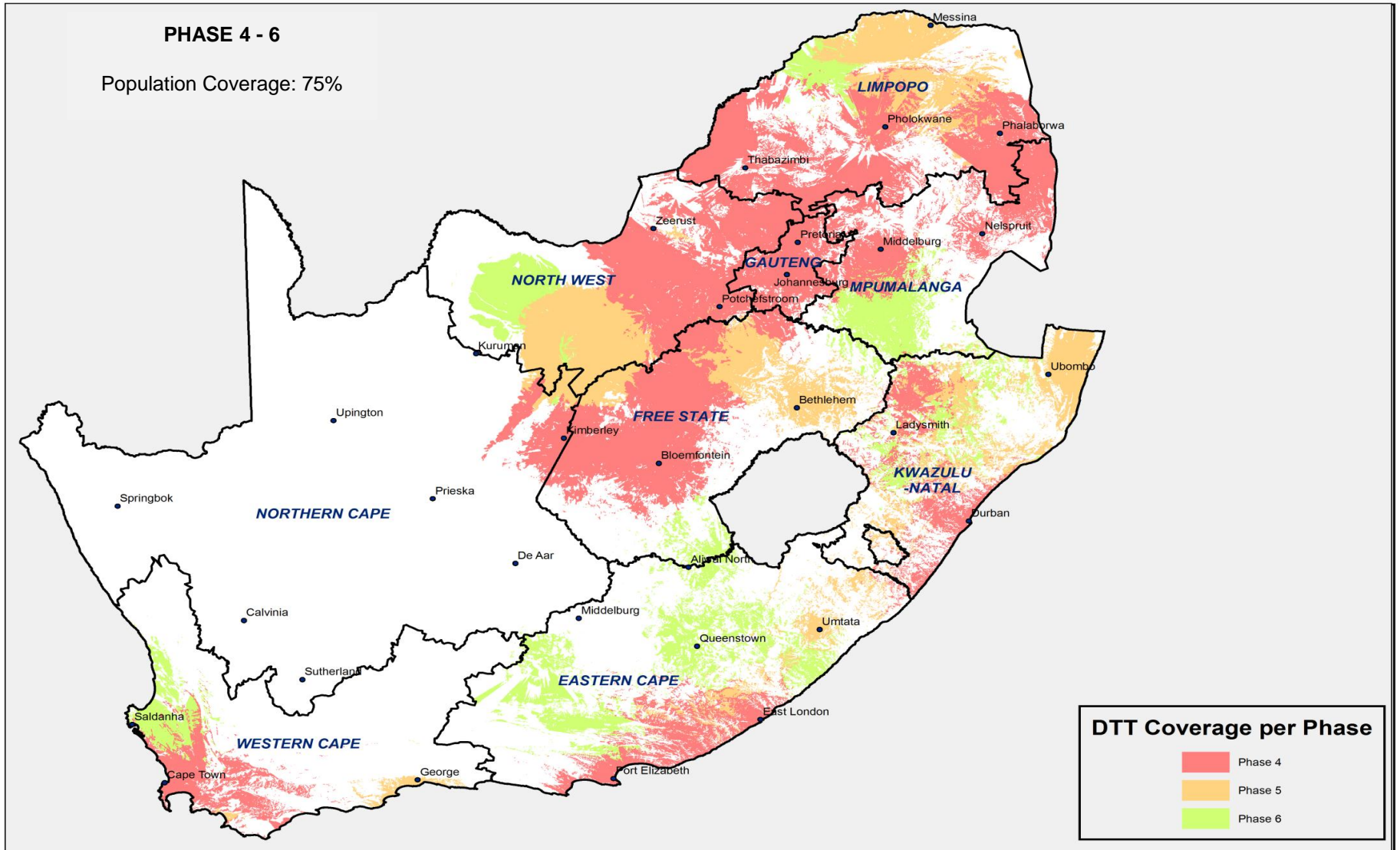


PHASE 5

TRANSMITTER SITES	TX's	PIE	COMBINERS	ANTENNAS	FEEDER CABLES	ELECTRICAL	HVAC	BUILDING	RBR LINKING	TVRO's	DVB-T2 READY
DONNYBROOK	21/Nov/11	28/Nov/11	28/Nov/11	Ready	Ready	29/Jul/11	29/Jul/11	29/Jul/11	N/A	28/Nov/11	2/Dec/11
VRYHEID	18/May/12	1/Jan/12	11/May/12	30/Sep/11	Ready	1/Mar/12	29/Mar/12	29/Mar/12	N/A	28/Nov/11	2/Dec/11
ESHOWE	14/Nov/11	28/Nov/11	27/Dec/11	Ready	Ready	22/Sep/11	27/Oct/11	18/Oct/11	N/A	28/Nov/11	16/Dec/11
GREYTOWN	21/Nov/11	6/Dec/11	27/Dec/11	10/Dec/11	Ready	21/Sep/11	27/Oct/11	28/Oct/11	N/A	28/Nov/11	9/Dec/11
HERMANUS	27/Jan/12	Ready	13/Jan/12	24/Sep/11	Ready	31/Aug/11	31/Aug/11	31/Aug/11	27/Jan/12	Ready	7/Feb/12
KING WILLIAMS TOWN	20/Jan/12	10/Feb/12	27/Jan/12	Ready	Ready	15/Nov/11	14/Aug/12	12/Dec/11	N/A	10/Feb/12	28/Feb/12
KROONSTAD	20/Jan/12	10/Feb/12	13/Jan/12	Ready	Ready	31/Aug/11	31/Aug/11	31/Aug/11	N/A	10/Feb/12	28/Feb/12
GREYTOWNDORP	20/Jan/12	N/A	30/Jan/12	31/Jan/12	Ready	27/Oct/11	24/Nov/11	13/Oct/11	10/Feb/12	N/A	28/Feb/12
SUIDRAND	17/Feb/12	Ready	10/Feb/12	2/Mar/12	Ready	30/Sep/11	30/Sep/11	30/Sep/11	10/Feb/12	Ready	16/Mar/12
LOUIS TRICHARDT	24/Feb/12	2/Mar/12	2/Mar/12	Ready	30/Sep/11	30/Sep/11	30/Sep/11	30/Sep/11	N/A	2/Mar/12	31/Mar/12
NEWCASTLE	10/Mar/12	N/A	10/Mar/12	10/Mar/12	Ready	15/Feb/12	12/Mar/12	6/Feb/12	N/A	2/Mar/12	31/Mar/12
TZANEEN	24/Feb/12	2/Mar/12	2/Mar/12	Ready	Ready	30/Sep/11	30/Sep/11	30/Sep/11	N/A	2/Mar/12	31/Mar/12
GROOT MARICO	2/Mar/12	N/A	10/Feb/12	2/Mar/12	Ready	31/Oct/11	31/Oct/11	31/Oct/11	10/Feb/12	N/A	16/Mar/12
UMTATA	2/Mar/12	2/Mar/12	2/Mar/12	Ready	Ready	1/Mar/12	29/Mar/12	16/Feb/12	N/A	23/Mar/12	31/Mar/12
UBOMBO	24/Feb/12	24/Feb/12	24/Feb/12	Ready	Ready	29/Dec/11	26/Jan/12	26/Jan/11	N/A	23/Mar/12	31/Mar/12
CHRISTIANA	30/Mar/12	N/A	30/Mar/12	Ready	Ready	31/Oct/11	31/Oct/11	31/Oct/11	30/Mar/12	N/A	31/Mar/12
MOUNT AYLIFF	31/Mar/12	31/Mar/12	31/Mar/12	10/Mar/12	31/Mar/12	30/Nov/11	30/Nov/11	30/Nov/11	N/A	31/Mar/12	31/Mar/12
SCHWEIZER RENEKE	31/Mar/12	31/Mar/12	31/Mar/12	Ready	Ready	30/Nov/11	30/Nov/11	30/Nov/11	N/A	31/Mar/12	31/Mar/12
VILLIERSDORP	Ready	Ready	Ready	Ready	31/May/11	Ready	Ready	Ready	Ready	Ready	31/Mar/12
PIET RETIEF				31/Mar/12							
QUDTSHOORN				31/Mar/12							
ULUNDI				31/Mar/12							
KURUMAN				31/Mar/12							
NAPIER				31/Mar/12							
NOUPOORT				31/Mar/12							
TEST EQUIPMENT	30/Jun/11	30/Jun/11									
SABC LINKING	Procure Termination equipment in September 2011 and complete installation by February 2012										
Mnet LINKING	Procure Termination equipment in September 2011 and complete installation by February 2012										
e.tv LINKING	Procure Termination equipment in September 2011 and complete installation by February 2012										
TBN LINKING	Procure Termination equipment in September 2011 and complete installation by February 2012										



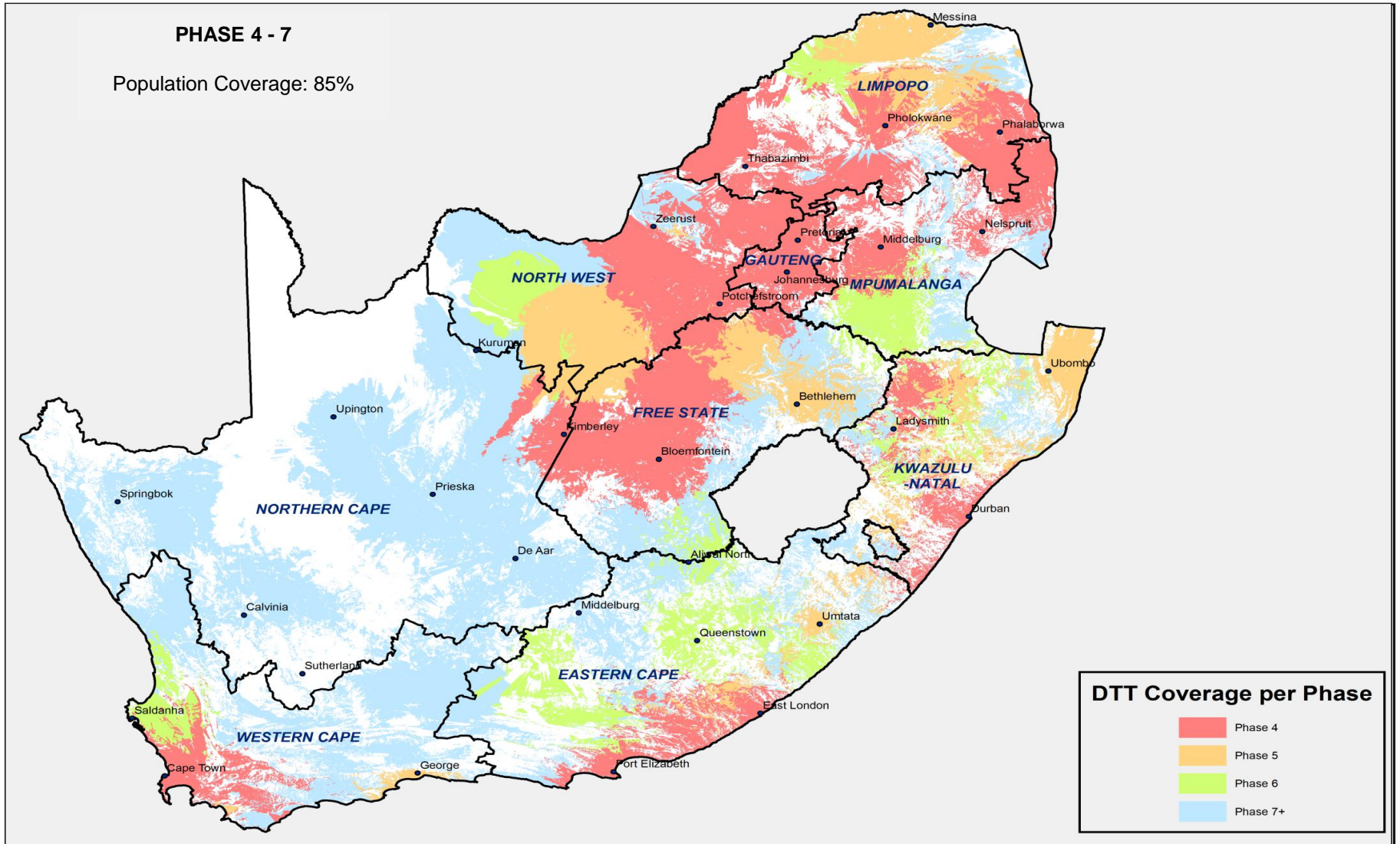
PHASE 6											
TRANSMITTER SITES	TX's	PIE	COMBINERS	ANTENNAS	FEEDER CABLES	ELECTRICAL	HVAC	BUILDING	RBR LINKING	TVRO's	DVB-T2 READY
SUURBERG	27/Apr/12	27/Apr/12	27/Apr/12	3/Dec/12	Ready	30/Nov/11	30/Nov/11	30/Nov/11	N/A	27/Apr/12	27/Apr/12
DAVEL	31/May/12	31/May/12	31/May/12	Ready	Ready	31/Jan/12	31/Jan/12	31/Jan/12	N/A	31/May/12	31/May/12
GEORGE	31/May/12	31/May/12	31/May/12	3/Dec/12	Ready	31/Jan/12	31/Jan/12	31/Jan/12	N/A	31/May/12	31/May/12
QUEENSTOWN	31/May/12	31/May/12	31/May/12	Ready	Ready	31/Jan/12	31/Jan/12	31/Jan/12	N/A	31/May/12	31/May/12
ENTSHATSHONGO	31/May/12	31/May/12	31/May/12	Ready	Ready	31/Jan/12	31/Jan/12	31/Jan/12	N/A	31/May/12	31/May/12
GANYESA	29/Jun/12	29/Jun/12	29/Jun/12	29/Jun/12	Ready	28/Feb/12	28/Feb/12	28/Feb/12	N/A	29/Jun/12	29/Jun/12
STERKSPRUIT	29/Jun/12	29/Jun/12	29/Jun/12	29/Jun/12	Ready	28/Feb/12	28/Feb/12	28/Feb/12	N/A	29/Jun/12	29/Jun/12
GRAAFF REINET	29/Jun/12	29/Jun/12	29/Jun/12	29/Jun/12	Ready	28/Feb/12	28/Feb/12	28/Feb/12	N/A	29/Jun/12	29/Jun/12
TAUNG	29/Jun/12	29/Jun/12	29/Jun/12	Ready	Ready	28/Feb/12	28/Feb/12	28/Feb/12	N/A	29/Jun/12	29/Jun/12
TOLWE	31/Jul/12	31/Jul/12	31/Jul/12	Ready	Ready	30/Mar/12	30/Mar/12	30/Mar/12	N/A	31/Jul/12	31/Jul/12
QUDENI	31/Jul/12	31/Jul/12	31/Jul/12	Ready	Ready	30/Mar/12	30/Mar/12	30/Mar/12	N/A	31/Jul/12	31/Jul/12
NQUTU	31/Jul/12	31/Jul/12	31/Jul/12	Ready	Ready	30/Mar/12	30/Mar/12	30/Mar/12	N/A	31/Jul/12	31/Jul/12
LOUWSBURG	31/Jul/12	31/Jul/12	31/Jul/12	Ready	Ready	30/Mar/12	30/Mar/12	30/Mar/12	N/A	31/Jul/12	31/Jul/12
VOLKSRUST	31/Aug/12	31/Aug/12	31/Aug/12	Ready	Ready	27/Apr/12	27/Apr/12	27/Apr/12	N/A	31/Aug/12	31/Aug/12
CALA	31/Aug/12	31/Aug/12	31/Aug/12	Ready	Ready	27/Apr/12	27/Apr/12	27/Apr/12	N/A	31/Aug/12	31/Aug/12
MOIRIVIER	31/Aug/12	31/Aug/12	31/Aug/12	31/Dec/12	Ready	27/Apr/12	27/Apr/12	27/Apr/12	N/A	31/Aug/12	31/Aug/12
BETHLEHEM	31/Aug/12	31/Aug/12	31/Aug/12	31/Dec/11	Ready	27/Apr/12	27/Apr/12	27/Apr/12	N/A	31/Aug/12	31/Aug/12
BUTTERWORTH	28/Sep/12	28/Sep/12	28/Sep/12	29/Feb/12	Ready	31/May/12	31/May/12	31/May/12	N/A	28/Sep/12	28/Sep/12
NONGOMA	28/Sep/12	28/Sep/12	28/Sep/12	31/Mar/12	Ready	31/May/12	31/May/12	31/May/12	N/A	28/Sep/12	28/Sep/12
KURUMAN HILLS	28/Sep/12	28/Sep/12	28/Sep/12	3/Dec/12	Ready	31/May/12	31/May/12	31/May/12	N/A	28/Sep/12	28/Sep/12
PIKETBERG					10/Sep/12						
TEST EQUIPMENT	31/Aug/11										



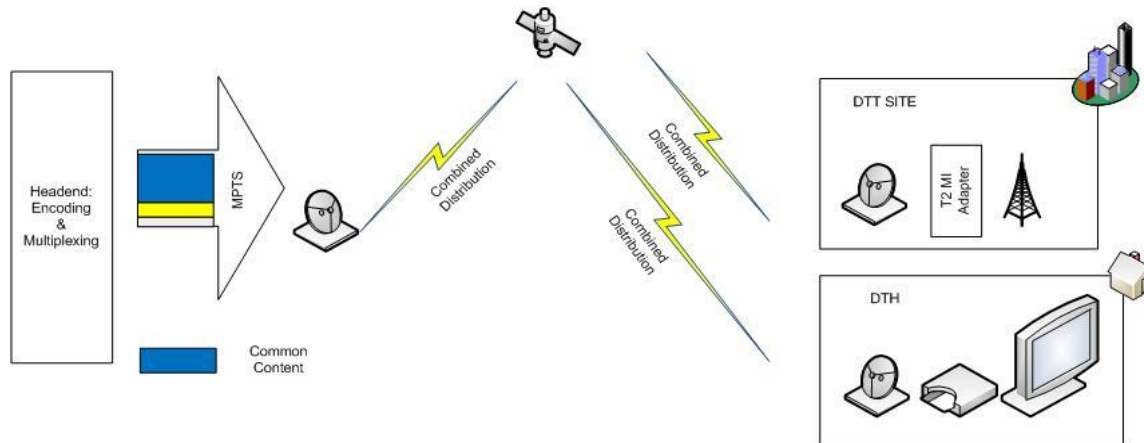
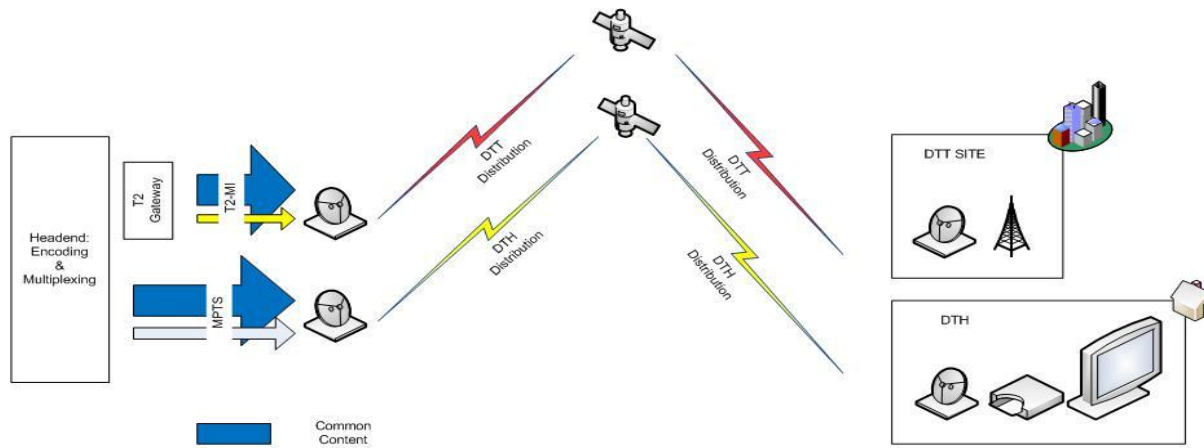
PHASE 7											
TRANSMITTER SITES	TX's	PIE	COMBINERS	ANTENNAS	FEEDER CABLES	ELECTRICAL	HVAC	BUILDING	RBR LINKING	TVRO's	DVB-T2 READY
STRAALHOEK	May/12	May/12	May/12	Apr/12			May/12	May/12	May/12	May/12	May/12
ENGCOBO	Jun/12	Jun/12	Jun/12	Jun/12	May/12		Jun/12	Jun/12	Jun/12	Jun/12	Jun/12
PETRUS STEYN	Jun/12	Jun/12	Jun/12	Jun/12	Feb/12		Jun/12	Jun/12	Jun/12	Jun/12	Jun/12
CRADOCK	Jul/12	Jul/12	Jul/12	Jun/12			Jul/12	Jul/12	Jul/12	Jul/12	Aug/12
SIBASA	Jul/12	Jul/12	Jul/12	Jul/12			Jul/12	Jul/12	Jul/12	Jul/12	Aug/12
MODSWEDI	Jul/12	Jul/12	Jul/12	Ready			Jul/12	Jul/12	Jul/12	Jul/12	Aug/12
KURUMAN HILLS	Aug/12	Aug/12	Aug/12	Ready			Aug/12	Aug/12	Jul/12	Aug/12	Aug/12
GABA	Aug/12	Aug/12	Aug/12	Aug/12	Jul/12		Aug/12	Aug/12	Jul/12	Aug/12	Aug/12
MADIBOGO	Aug/12	Aug/12	Aug/12	Jul/12			Aug/12	Aug/12	Jul/12	Aug/12	Aug/12
PORT ST JOHNS	Sep/12	Sep/12	Sep/12	Jul/12			Sep/12	Jul/12	Aug/12	Sep/12	Sep/12
SUPINGSTAD	Sep/12	Sep/12	Sep/12	Aug/12			Sep/12	Sep/12	Aug/12	Sep/12	Sep/12
LOSKOP	Sep/12	Sep/12	Sep/12	Aug/12			Sep/12	Sep/12	Aug/12	Sep/12	Sep/12
LADYBRAND	Oct/12	Oct/12	Sep/12	Mar/12			Oct/12	Sep/12	Sep/12	Oct/12	Oct/12
KAREEDOUW	Oct/12	Oct/12	Sep/12	Mar/12			Oct/12	Sep/12	Sep/12	Oct/12	Oct/12
WILLOWMORE	Oct/12	Oct/12	Oct/12	May/12			Oct/12	Oct/12	Oct/12	Oct/12	Nov/12
WILLISTON	Oct/12	Dec/12	Oct/12	Jan/12			Oct/12	Oct/12	Oct/12	Dec/12	Nov/12
SWARTRUGGENS	Oct/12	Oct/12	Oct/12	Jan/12			Oct/12	Oct/12	Oct/12	Oct/12	Dec/12
DZAMBA	Nov/12	Nov/12	Nov/12	Dec/12			Nov/12	Nov/12	Oct/12	Nov/12	Dec/12
COLESBERG	Nov/12	Nov/12	Nov/12	Dec/12			Nov/12	Nov/12	Oct/12	Nov/12	Dec/12
KOKSTAD	Dec/12	Dec/12	Nov/12	Jan/12			Dec/12	Nov/12	Nov/12	Dec/12	Dec/12
TSHAMAVUDZI	Dec/12	Dec/12	Dec/12	Ready			Dec/12	Dec/12	Dec/12	Dec/12	Jan/13
STANDERTON	Dec/12	Dec/12	Dec/12	Nov/11			Dec/12	Dec/12	Dec/12	Dec/12	Jan/13
BURGERSDORP	Feb/13	Feb/13	Feb/13	Nov/11			Mar/13	Feb/13	Feb/13	Feb/13	Mar/13
PLETTENBERG BAY	Mar/13	Mar/13	Mar/13	Feb/12			Mar/13	Feb/13	Feb/13	Mar/13	Mar/13
SABIE	Mar/13	Mar/13	Mar/13	Feb/12			Mar/13	Mar/13	Mar/13	Mar/13	Apr/13
MALAMBA	Mar/13	Mar/13	Mar/13	Feb/13			Mar/13	Mar/13	Mar/13	Mar/13	Apr/13
EMPANGENI	Mar/13	Mar/13	Mar/13	Feb/12			Mar/13	Mar/13	Mar/13	Mar/13	Apr/13
FICKSBURG TOWN	Apr/13	Apr/13	Apr/13	Feb/12			Apr/13	Apr/13	Apr/13	Apr/13	May/13
SOMERSET EAST	Apr/13	Apr/13	Apr/13	Feb/12			Apr/13	Apr/13	Apr/13	Apr/13	May/13
MONTAGU	Apr/13	Apr/13	Apr/13	Feb/12			Apr/13	Apr/13	Apr/13	Apr/13	May/13
KIRKWOOD	May/13	May/13	Apr/13	Feb/13			May/13	Apr/12	Apr/13	May/13	May/13
NGANGELIZWE	Apr/13	Apr/13	Apr/13	Mar/12			Apr/13	Apr/13	Apr/13	Apr/13	May/13

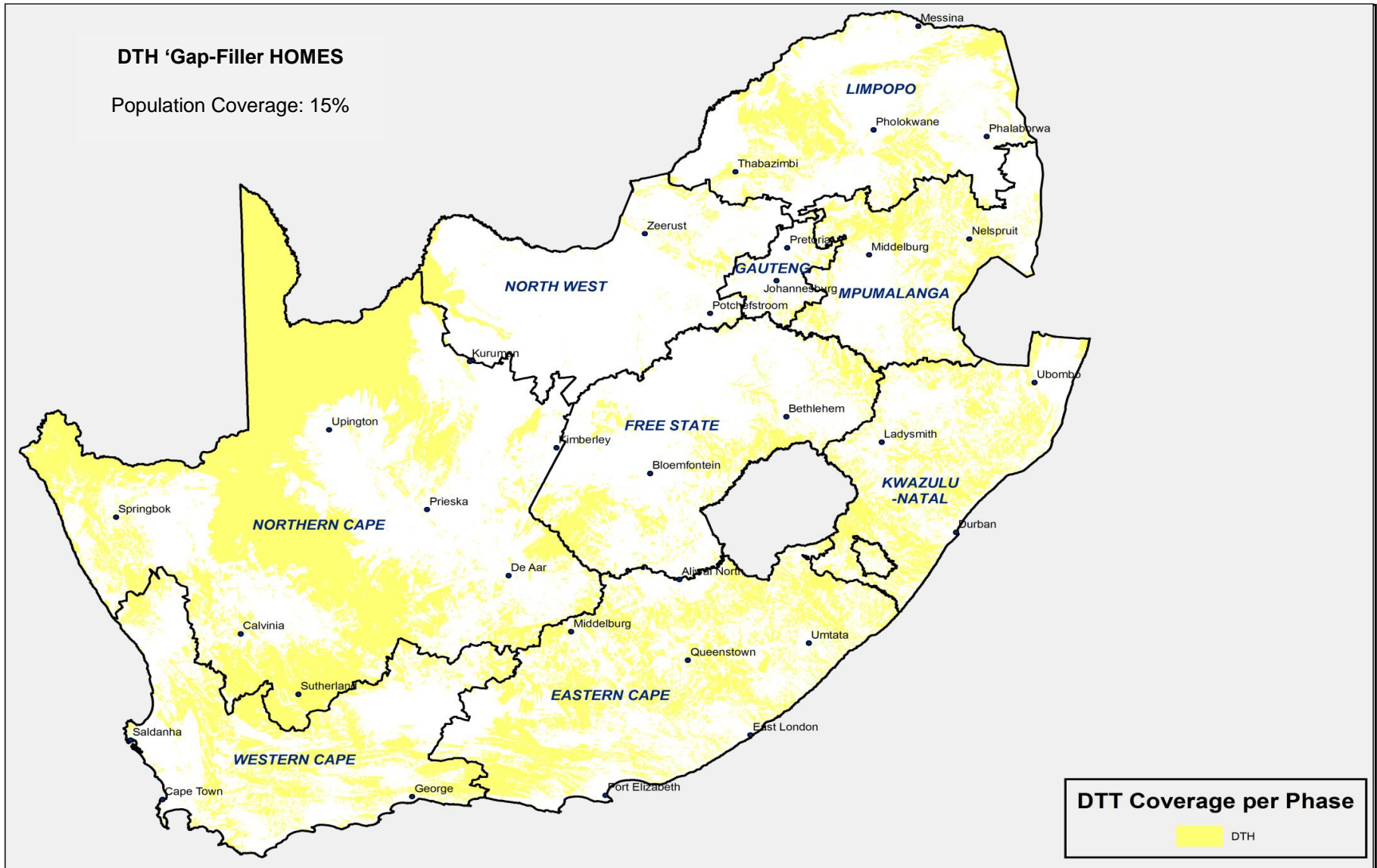
TRANSMITTER SITES	TX's	PIE	COMBINERS	ANTENNAS	FEEDER CABLES	ELECTRICAL	HVAC	BUILDING	RBR LINKING	TVRO's	DVB-T2 READY
PAUL SUAER DAM	May/13	May/13	May/13	Apr/12		May/13	May/13	Apr/13	May/13		May/13
DEWETSDORP	May/13	May/13	May/13	Ready		May/13	May/13	Apr/13	May/13		May/13
PATENSIE	May/13	May/13	May/13	Apr/12		May/13	May/13	Apr/13	May/13		May/13
ANDRIESKRAAL	May/13	May/13	May/13	Apr/12		May/13	May/13	May/13	May/13		Jun/13
HOWICK	May/13	May/13	May/13	Apr/12		May/13	May/13	May/13	May/13		Jun/13
UNIONDALE TOWN	May/13	May/13	May/13	Apr/13		May/13	May/13	May/13	May/13		Jun/13
HANKEY	Jun/13	Jun/13	May/13	Apr/13		Jun/13	Jun/13	May/13	Jun/13		Jun/13
ALEXANDER BAY	Jun/13	Jun/13	May/13	Jul/12		Jun/13	Jun/12	May/13	Jun/13		Jun/13
ALIWAL NORTH	Jun/13	Jun/13	Jun/13	Ready		Jun/13	Jun/13	Jun/13	Jun/13		Jul/13
NOUPOORT	Jun/13	Jun/13	Jun/13	Oct/11		Jun/13	Jun/13	Jun/13	Jun/13		Jul/13
MOUNT AYLIFF	Jun/12	Jul/13	Jul/13	Apr/12		Jul/13	Jul/13	Jun/13	Jul/13		Jul/13
BUTTERWORTH	Jul/13	Jul/13	Jun/13	Apr/12		Jul/13	Jul/13	Jun/13	Jul/13		Jul/13
WITSIESHOEK	Jul/13	Jul/13	Jun/13	Ready		Jul/13	Jul/13	Jun/13	Jul/13		Jul/13
NONGOMA	Jul/13	Jul/13	Jul/13	Apr/12		Jul/13	Jul/13	Jul/13	Jul/13		Aug/13
SENEKAL	Jul/13	Jul/13	Jul/13	Apr/12		Jul/13	Jul/13	Jul/13	Jul/13		Aug/13
MATATIELE	Jul/13	Jul/13	Jul/13	Jun/13		Jul/13	Jul/13	Jul/13	Jul/13		Aug/13
PIET PLESSIS	Aug/13	Aug/13	Jul/13	Jun/12		Aug/13	Jul/13	Jul/13	Aug/13		Aug/13
ENZELBERG	Aug/13	Aug/13	Jul/13	Jun/12		Aug/13	Jul/13	Jul/13	Aug/13		Aug/13
CAROLINA	Aug/13	Aug/13	Jul/13	Jun/13		Aug/13	Jul/13	Jul/13	Aug/13		Aug/13
BEDFORD	Aug/13	Aug/13	Aug/13	Jun/13		Aug/13	Aug/13	Aug/13	Aug/13		Sep/13
LADISMITH (CAPE)	Aug/13	Aug/13	Aug/13	Jul/12		Aug/13	Aug/13	Aug/13	Aug/13		Sep/13
BOESMANSKOP	Aug/13	Aug/13	Aug/13	Jul/13		Aug/13	Aug/13	Aug/13	Aug/13		Sep/13
LADYSMITH	Aug/13	Aug/13	Aug/13	Jun/12		Aug/13	Aug/13	Aug/13	Aug/13		Sep/13
DULLSTROOM	Aug/13	Aug/13	Aug/13	Ready		Aug/13	Aug/13	Aug/13	Aug/13		Sep/13
DOUGLAS	Aug/13	Aug/13	Aug/13	Jul/12		Aug/13	Aug/13	Aug/13	Aug/13		Sep/13
KNYSNA	Aug/13	Aug/13	Aug/13	Jul/12		Sep/13	Aug/13	Aug/13	Aug/13		Sep/13
HECTORSPRUIT	Sep/13	Sep/13	Aug/13	Aug/13		Sep/13	Sep/13	Aug/13	Sep/13		Sep/13
CERES	Sep/13	Sep/13	Aug/13	Jul/12		Sep/13	Sep/13	Aug/13	Sep/13		Sep/13
NYLSTROOM	Sep/13	Sep/13	Sep/13	Jul/12		Sep/13	Aug/13	Aug/13	Sep/13		Oct/13
SPRINGFONTEIN	Sep/13	Sep/13	Sep/13	Sep/12		Sep/13	Sep/13	Sep/13	Sep/13		Oct/13
PONGOLA	Sep/13	Sep/13	Sep/13	Ready		Sep/13	Sep/13	Aug/13	Sep/13		Oct/13
LYDENBURG	Sep/12	Oct/12	Sep/12	Aug/13		Sep/13	Sep/13	Sep/13	Oct/12		Oct/13
MATJIESFONTEIN	Oct/13	Oct/13	Sep/13	Sep/12		Oct/13	Sep/13	Sep/13	Oct/13		Oct/13

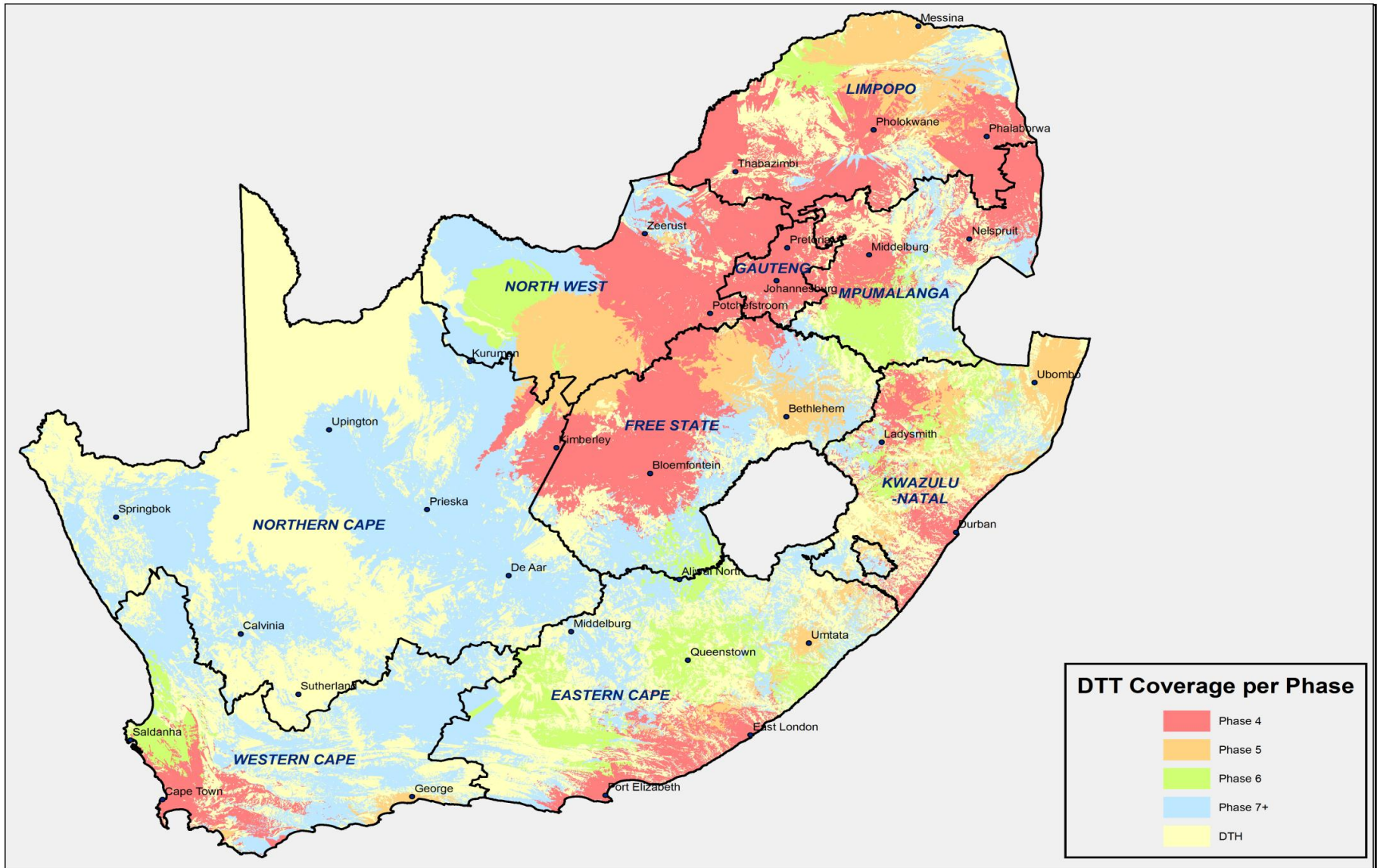
TRANSMITTER SITES	TX's	PIE	COMBINERS	ANTENNAS	FEEDER CABLES	ELECTRICAL	HVAC	BUILDING	RBR LINKING	TVRO's	DVB-T2 READY
ESRCOURT	Oct/13	Oct/13	Sep/13	Aug/12		Oct/13	Sep/13	Sep/13	Oct/13		Oct/13
UGIE	Oct/13	Oct/13	Oct/13	Aug/12		Oct/13	Oct/13	Oct/11	Oct/13		Nov/13
ELLIOT	Oct/13	Oct/13	Oct/13	Aug/13		Oct/13	Oct/13	Oct/13	Oct/13		Nov/13
BARKLEY EAST	Oct/13	Oct/13	Oct/13	Aug/12		Oct/13	Oct/13	Oct/13	Oct/13		Nov/13
TOUWSRIVIER	Oct/13	Oct/13	Oct/13	Aug/12		Oct/13	Oct/13	Oct/13	Oct/13		Nov/13
KLEINMOND	Nov/13	Nov/13	Oct/13	Aug/12		Nov/13	Oct/13	Oct/13	Nov/13		Nov/13
UNIONDALE TOWN	Oct/13	Oct/13	Oct/13	Sep/12		Oct/13	Oct/13	Oct/13	Oct/13		Nov/13
GROOT BRAKRIVIER	Oct/13	Oct/13	Oct/13	Aug/12		Oct/13	Oct/13	Oct/13	Oct/13		Nov/13
HEXRIVIER	Nov/13	Nov/13	Oct/13	Sep/12		Nov/13	Oct/13	Oct/13	Nov/13		Nov/13
UPINGTON TOWN	Nov/13	Nov/13	Oct/13	Ready		Nov/13	Oct/13	Oct/13	Nov/13		Nov/13
CALVINIA	Nov/13	Nov/13	Nov/13	Sep/12		Nov/13	Nov/13	Nov/13	Nov/13		Dec/13
ELANDS HEIGHTS	Nov/13	Nov/13	Nov/13	Dec/12		Nov/13	Oct/12	Nov/13	Nov/13		Dec/13
ULUNDI	Nov/13	Nov/13	Nov/13	Dec/12		Nov/13	Nov/13	Oct/13	Nov/13		Nov/13
KURUMAN HILLS	Nov/13	Nov/13	Nov/13	Dec/12		Dec/13	Nov/13	Nov/13	Nov/13		Dec/13
MBUZINI	Dec/13	Dec/13	Nov/13	Nov/12		Dec/13	Dec/13	Nov/13	Dec/13		Dec/13
PIET RETIEF	Nov/13	Nov/13	Nov/13	May/13		Dec/13	Nov/13	Nov/13	Nov/13		Dec/13
OUDTSHOORN	Dec/13	Dec/13	Dec/13	Mar/12		Dec/13	Dec/13	Nov/13	Dec/13		Dec/13
RIVERSDAL	Dec/13	Dec/13	Dec/13	Mar/12		Dec/13	Dec/13	Nov/13	Dec/13		Dec/13
NAPIER	Dec/13	Dec/13	Nov/13	Apr/12		Dec/13	Dec/13	Nov/13	Dec/13		Dec/13
POMFRET	Dec/13	Dec/13	Dec/13	Mar/12		Dec/13	Dec/13	Nov/13	Dec/13		Dec/13
UPINGTON	Dec/13	Dec/13	Dec/13	Mar/12		Dec/13	Dec/13	Nov/13	Dec/13		Dec/13
VAN RHYNSDORP	Dec/13	Dec/13	Dec/13	Jun/13		Dec/13	Dec/13	Nov/13	Dec/13		Dec/13
DE AAR	Dec/13	Dec/13	Dec/13	Jun/13		Dec/13	Dec/13	Dec/13	Dec/13		Dec/13
BEAUFORT WEST	Dec/13	Dec/13	Dec/13	Jun/13		Dec/13	Dec/13	Dec/13	Dec/13		Dec/13
PRIESKA	Dec/13	Dec/13	Dec/13	Jun/13		Dec/13	Dec/13	Dec/13	Dec/13		Dec/13
SPRINGBOK	Dec/13	Dec/13	Dec/13	Jun/13		Dec/13	Dec/13	Nov/13	Dec/13		Dec/13
GARIES	Dec/13	Dec/13	Dec/13	Aug/12		Dec/13	Dec/13	Nov/13	Dec/13		Dec/13
VICTORIA WEST	Nov/13	Nov/13	Dec/13	Aug/13		Dec/13	Nov/13	Nov/13	Nov/13		Dec/13
POFADDER	Dec/13	Dec/13	Dec/13	Aug/13		Dec/13	Dec/13	Nov/13	Dec/13		Dec/13



- The Broadcasting Digital Migration (BDM) policy of 2008 and the Draft BDM policy of 2011 provides that areas that are difficult to reach through terrestrial network, will be covered by Direct-To-Home (DTH) Satellite
- The related policy issue is subsidies for DTH STBs in order to enable access in designated areas (i.e. areas where there will be no DTT reception). This will not necessarily prevent someone from using a DTH-compatible STB in a non-designated area
- High-levels of content security to be implemented in order to avoid access outside the borders
- Currently reviewing the most operationally cost-effective method of implementing the DTH gap filler solution (detailed in the next slide)







Capex	2011/12				2012/13				2013/14				Total
	Qtr 1	Qtr 2	Qtr 3	Qtr 4	Qtr 1	Qtr 2	Qtr 3	Qtr 4	Qtr 1	Qtr 2	Qtr 3	Qtr 4	
EXPENDITURE													
Transmitters	1,150	38,875	68,746	-	39,475	56,418	27,204	1,414	8,176	28,969	52,509	-	322,936
Programme input equip.	-	1,251	939	749	4,201	10,032	4,434	310	2,536	11,345	14,993	-	50,791
Combiners	5,760	1,650	60	7,640	1,100	4,050	2,100	500	2,850	6,350	8,970	-	41,030
Antennas/Mast	1,910	6,395	23,700	39,690	32,680	35,750	23,343	1,990	14,960	18,490	-	-	198,908
Feeder cables	5,480	2,000	-	3,000	-	2,000	4,500	-	-	-	-	-	16,980
Electrical	420	8,853	19,722	4,550	1,434	7,497	7,981	2,390	9,808	11,596	24,060	-	98,311
HVAC	645	2,816	741	-	305	1,871	1,730	305	1,168	1,464	3,060	-	14,105
Building	593	845	390	-	84	308	224	140	533	588	1,084	-	4,789
Linking	-	-	3,131	6,262	2,609	6,784	2,087	-	-	-	-	-	20,873
Head-end & ancillary	29,042	5,180	24,272	-	5,000	5,000	5,000	5,000	5,000	-	-	-	83,494
TVRO's	-	1,502	1,222	1,251	4,078	4,021	2,034	-	-	280	-	-	14,389
PM & Labour	210	300	750	180	180	420	450	150	480	630	900	-	4,650
Total per quarter	45,210	69,667	143,673	63,322	91,146	134,152	81,087	12,199	45,511	79,712	105,576	-	871,255
Total per quarter incl. VAT	51,539	79,420	163,787	72,187	103,907	152,933	92,439	13,907	51,882	90,872	120,357	-	993,231
Cumulative Total	51,539	130,960	294,747	366,934	470,841	623,774	716,213	730,120	782,002	872,874	993,231	-	
FUNDING													
Phase 1-5 roll over	35,585	-	-	-	-	-	-	-	-	-	-	-	35,585
Phase 5 roll over	51,000	-	-	-	-	-	-	-	-	-	-	-	51,000
Phase 3-5 balance drawdown	110,000	-	-	-	-	-	-	-	-	-	-	-	110,000
New Drawdown: Phase 5 - 6	-	79,500	79,500	-	-	-	-	-	-	-	-	-	159,000
New drawdown: Phase 6	-	-	-	-	83,475	83,475	-	-	-	-	-	-	166,950
New drawdown: Phase 7	-	-	-	-	-	70,440	105,660	-	-	-	-	-	176,100
Total	196,585	79,500	79,500	-	83,475	153,915	105,660	-	-	-	-	-	698,635
Cumulative Total	196,585	276,085	355,585	355,585	439,060	592,975	698,635	-	-	-	-	-	
Surplus / (Deficit)	145,046	145,125	60,838	(11,349)	(31,781)	(30,799)	(17,578)	(31,485)	(83,367)	(174,239)	(294,596)	-	(294,596)
Opex													
Expenditure	16,815	20,237	23,236	32,217	31,563	31,563	31,563	31,563	52,466	52,466	52,466	-	376,152
Cumulative Expenditure	16,815	37,052	60,288	92,505	124,067	155,630	187,192	218,755	271,221	323,686	376,152	-	
Funding													
Funding	-	58,000	-	-	54,000	50,000	38,000	-	-	-	-	-	200,000
Roll over	31,000	-	-	-	-	-	-	-	-	-	-	-	31,000
Cumulative Funding	31,000	89,000	89,000	89,000	143,000	193,000	231,000	231,000	231,000	231,000	231,000	-	
Surplus / (Deficit)	14,185	51,948	28,712	(3,505)	18,933	37,370	43,808	12,245	(40,221)	(92,686)	(145,152)	-	(145,152)
Net Surplus / (Deficit)	159,231	197,074	89,550	(14,854)	(12,848)	6,571	26,229	(19,240)	(123,588)	(266,925)	(439,748)	-	(439,748)

- Final Transmission Parameters
- STB Control
- Community Television Broadcasters coverage requirements
- 'Rules of Operation' – PSI/SI Management
- Pietermaritzburg Mast changes (CAA)
- Alternative site for Clifton
- Interference on Video Distribution Systems – Hotels, etc.
- Cape Community Television frequency change
- Despatch co-channel interference resolved



SENTECH

connecting You