

# DEPARTMENT OF PUBLIC WORKS

## PRESENTATION ON JOB CREATION PROJECTS

02 August 2011

DDG:PROJECTS  
MANDLA MABUZA



## TABLE OF CONTENTS

- Special Projects (Potholes, LPOE, Bridges, Harbours)
- Methodology
- Selection criterion
- Budget



## POT HOLES

- 196 municipalities reporting on EPWP;
- Rural Nodes(21);
- Key OUTCOMES relevant to DPW.



## METHODOLOGY

- Appoint contractors: per Municipality
- Matrix: 90 x 22 x 6
- 50% of R150m=R75m= 14000 Labour
- R75m: material, equipment, profit



## STIPEND DETERMINATION MATRIX FOR THE POTHOLE REHAB PROGRAMME

- The commitment of appointment of 400 beneficiaries per metro yields the following scenario.
- The case study that informs the allocation of beneficiaries is 1 kilometer ( km) of road translates to 2 work opportunities (1km = 2 Job opportunities)
- A proposal to peg the stipend at R90.00 for the 6months at three days per week:
  - R90 x 12 working days x 6months
  - = R6,480.00 income per beneficiary
  - Monthly income of R1,080.00

## STIPEND DETERMINATION MATRIX FOR THE POTHOLE REHAB PROGRAMME

- Costing of the 2400 work opportunities for 6 metros
  - = R6,480.00 income per beneficiary x 400 beneficiaries
  - = R2,592,000.00 x 6 metros
  - = R15,552,000.00 remuneration
- From these total costing it may be deduced that budget may allow the programme to extend beyond the 400 job opportunities proposed.
- The identification of further roads may be considered to extend the job opportunity period beyond the six months
- The identification of the roads and immediate engagements with all municipalities must be finalized for informed commitments

## Youth Co-ops

- LPOET
- Lebombo
- Golela
- Vioolsdrift
- Skilpadhek



## Methodology

- 70%=R20m=R14m = 2650Labour
- 60 x 22 x 4= R5 280
- 30%= R6m: material, equipment





## LOW COST BRIDGES

- DOD receive request from NDWP with regard to delivery of bridge systems to the Eastern Cape – Feb 09.
- 15 June 09: Inter Departmental Meeting.
- An assessment team was sent to the Eastern Cape on 1 – 3 July 09.
- Three Bridge Systems were delivered (Nov 09-Mar 10):
  - Tsomo Bridge (Lufukufuku) @ R 498 082-00
  - Port Saint Johns (Mtafufu) @ R 482 288-00
  - Kokstad Suspension Bridge (Daluhlanga) @ R 655 816-00
  - Total R 1 636 186-00



## BACKGROUND

- Bridge Systems: Bailey Bridges, Suspension Bridges and Designed Steel Structures (Pedestrians).
- Bailey Bridges : Old Stock, Redundant and due for disposal. Stock is not unserviceable, just not in use as Mil system.
- Lack of components for complete bridge systems.
- Bridge Components available are donated to NDPW
  - No cost is calculated for bridge parts delivered from DOD inventory.
- Inter-dept inventory transfer must be done.
- MOU between DOD and DPW was concluded in November 2010.



## COST CLAIM BY DOD

- Subsistence and Travel Allowance. (deprivation allowance)
- Salaries of DOD personnel not claimed
- Bridge Components not in stock, to be manufactured. Procure steel.
- Transport cost - Running Cost of Vehicles.
- Rations – only when on site.
- Casual labourers.
- Construction material.
- Toilet hire, OHS, Cleaning material.



## PROCESS TO DELIVER

- Requirement from NDPW (Plus Priorities)
- DOD + NDPW + Municipality: Site assessment.
- Feasibility study + Cost Estimate.
- Addendum to IP, signed and issued to DOD.
- Signed Addendum will activate process in DOD to deliver the bridge.
- DOD need three months to prepare for deployment of bridge system.
- Restrictions to Bridge Sizes; Max 50m and 10 - 15 tons MLC, depending on design



## BRIDGE DEPLOYMENT: PRACTICAL STEPS

- $\pm$  30 days for a 30m bridge.
- $\pm$  40-45 people needed to construct.
- Casual labour – establish bridge head.
- Uniform members – build steel structures.
- Building team – Stays on site.
- Construction vehicles – transport cost – high.
- Steel components weigh approximately 5 tons per 3m bay.
- Alternatives: Suspension bridges + unique designed structures for pedestrians.
- Can only deliver  $\pm$ 5 Bridges per annum.

## COMPLETED BRIDGES

- Mzintlawa Bridge: Gap 36,2m, Tot R1 111 852.
- Nququ Bridge Gap 40m, Tot R1 132 148.
- 2 x Pedestrian Bridges Gap 12m, (Cezu & Macoza in KSD Municipality) R 135 789.
- Hammanskraal Suspension Bridge Gap 150m, Tot R 1 800 000.



## NQUQU - BEFORE

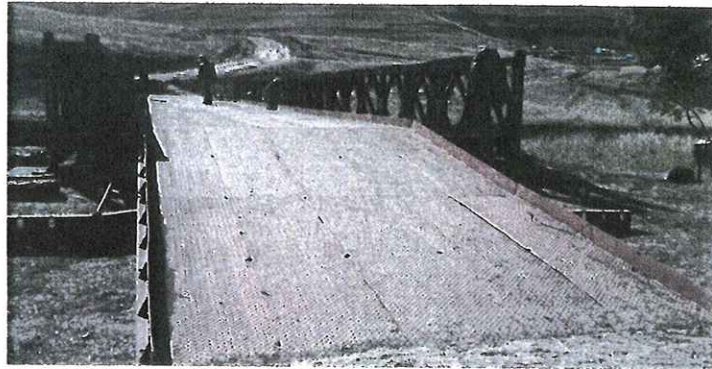


public works  
Department  
Pobu-ke-zi  
REPUBLIC OF SOUTH AFRICA

Select Committee on Public Service

15

## NQUQU - AFTER



public works  
Department  
Pobu-ke-zi  
REPUBLIC OF SOUTH AFRICA

Select Committee on Public Service

16



## CEZU CROSSING IN KING SABATA DALINDYEBO MUNICIPALITY - UMTATA



public works  
Department  
Public Works  
REPUBLIC OF SOUTH AFRICA

Select Committee on Public Service

17

## DALUHLANGA BRIDGE



public works  
Department  
Public Works  
REPUBLIC OF SOUTH AFRICA

Select Committee on Public Service

18

## HAMMANSKRAAL BRIDGE



## ADDITIONAL REQUIREMENTS

- Additional requests were received for assessments in the following provinces:\ul>  - Limpopo: 15 Requests
  - Kwazulu Natal: 11 Requests
  - North West: 5 Requests
  - Eastern Cape: 19 Requests
- These assessments were decentralised to regional GIS offices.
- Awaiting progress reports.
- Note: The feasibility study based on the assessment reports received will determine possible bridge delivery.



## Current status quo (Tshwane Metro)

City of Tshwane is divided into five (5) regions namely:

- Northwest Region (Ga Rankuwa, Mabopane, Soshanguve and other nearby suburbs),
- Central Region (Atteridgeville, Pretoria West and Pretoria CBD),
- South Region (Centurion and southern suburbs),
- East Region (Mamelodi and other eastern suburbs) and
- Northeast Region (Themba, Stinkwater and other Northern Suburb).

## Current status quo..

- One of the main objectives of this programme is to alleviate poverty and unemployment by applying labour intensive method through our Expanded Public Works Programme.
- A total of 400 beneficiaries were nominated City of Tshwane and Public Works database.
- 8 Contractors are also appointed



## Current status quo

- Official Launch of Repairs of Pothole Programme-DONE
- Orientation and Training of Beneficiaries by NDPW EPWP and CSIR-DONE
- Site handover to the contractors-DONE
- Actual Work (Central Region and North West Region, South Region and Northeast Region)



## NEXT MUNICIPALITIES

- Jhb Metro
- Ekurhuleni
- Mafikeng
- Mthatha
- Nelspruit
- Polokwane





## LPOE

- Appointment of beneficiaries at Nkomazi-DONE
- Appointment of landscaper-DONE
- 12 months full contract
- Convert to Youth co-ops until 2014



## Maintenance of Harbors

- Gans Bay: Slipway and Mechanical Ramp
- St Helan Bay: Mechanical Repair
- Saldahna Bay: Mechanical and infrastructure
- Houtbay, Lamberts, Hermanus, Kalk bay (Mechanical and infrastructure)
- Houtbay, Stillbaai, St Helena, Struisbaai: Slipway, infrastructure repair, electricity



## Maintenance of Harbors

- Employ 400 beneficiaries in all 12 harbors
- For every R1m spent=10 Job opportunities to be created
- Job opportunities are for the duration of the project
- An average job opportunity for these projects is 24 months



## Conclusion

- In sourcing will underpin our work
- % of R1,4b of DPW Capital will be in sourced
- Professional service of DPW will drive this process
- Purchase of QS system, GIS



## Conclusion

- Job Creation projects are making huge interests where already launched
- Key lesson to maintain the momentum
- Confirmation of conditional assessments by remaining provinces key
- Youth coops model is a reliable and sustainable model



THANK YOU

