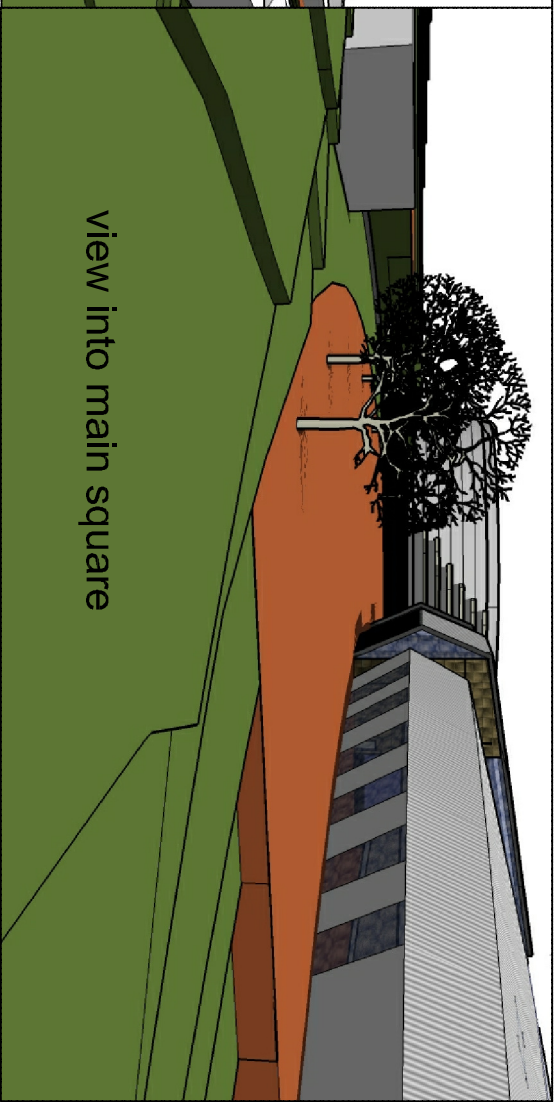


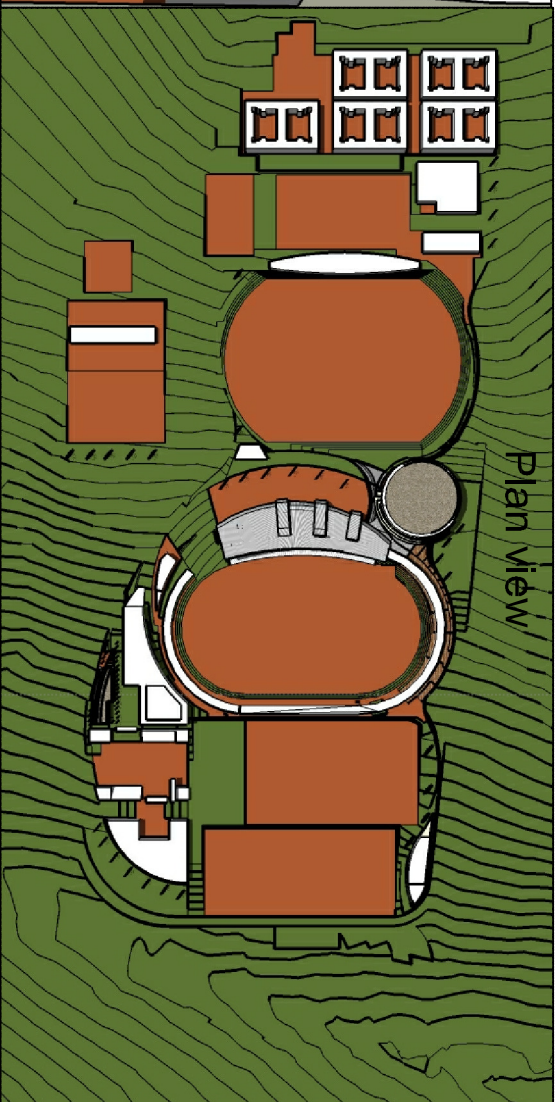
view from show lodge  
west face



view into main square



Square view between  
HOF and Auditorium



Plan view

title: drawing number



KANDA  
D.E.S.I.G.N

project **SASAHOF\_MATERIALS**

460B The Wshbone North  
Lynnwood Pretoria 0081  
PO Box 35519 Menlopark 0102  
tel 012 348 4686 • fax 012 348 3919  
e mail: info@kanda.co.za  
Kanda Design (Pty) Ltd  
Reg nr. 2007/034651/07

revision no

D									
---	--	--	--	--	--	--	--	--	--

scale  
NTS

date  
19/10/10

drawn  
AWO

file no  
**01015**