

WOMEN IN 2010 PROJECTS



Covered!

EPWP

Consolidated Report

2ND Quarterly Report 2008 / 2009

JOB CREATED & TRAINING - STATUS REPORT

disabled people -

Project Name	Male	F/Male	Dis	Youth	Total	T.Days	Jobs
Orlando Stadium	3966	482	3	2322	4448	21528	377.68
Orlando Precinct					0		0.00
Dobsonville Stadium	8	4	0	8	12	120	2.11
Dobsonville Precinct					0		0.00
Rand Stadium - EPWP	46	19	0	26	65	1105	19.39
Rand Precinct					0		0.00

WOMEN IN 2010 PROJECTS cont.

EPWP

Consolidated Report

2ND Quarterly Report 2008 / 2009

*NNN → To give a breakfast
of the job creation +
starts of women*

JOB CREATED & TRAINING - STATUS REPORT

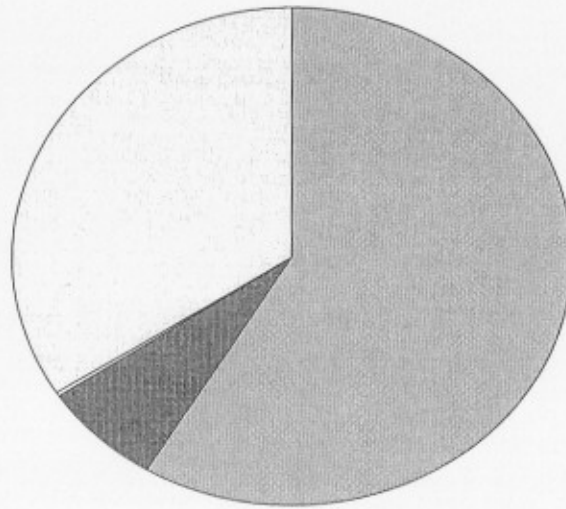
Project Name	Male	F/Male	Di	s Youth	Total	T.Days	Jobs
Soccer City Stadium	7283	509	0	5561	7792	179183	3143.56
Nasrec Precinct					0		0.00
Ellis Park Stadium	60	4	0	31	64	1968	34.53
Ellis Park Precinct					0		0.00
Grassing of Soccer Fields	35	0	3	1 24	35	250	4.39
BRT					0		0.00
KK Projects					0		0.00
TOTAL	11398	1018	3	4 7972	12416	204154	3582

WOMEN IN 2010 PROJECTS cont.

All info accumulated on Quarterly Basis

CONSOLIDATED EPWP REPORT AS AT DECEMBER 2008

Male – 56%
Females – 5%
Youth – 39%
Disabled – (-0)



□ Male
■ F/Male
□ Dis
□ Youth

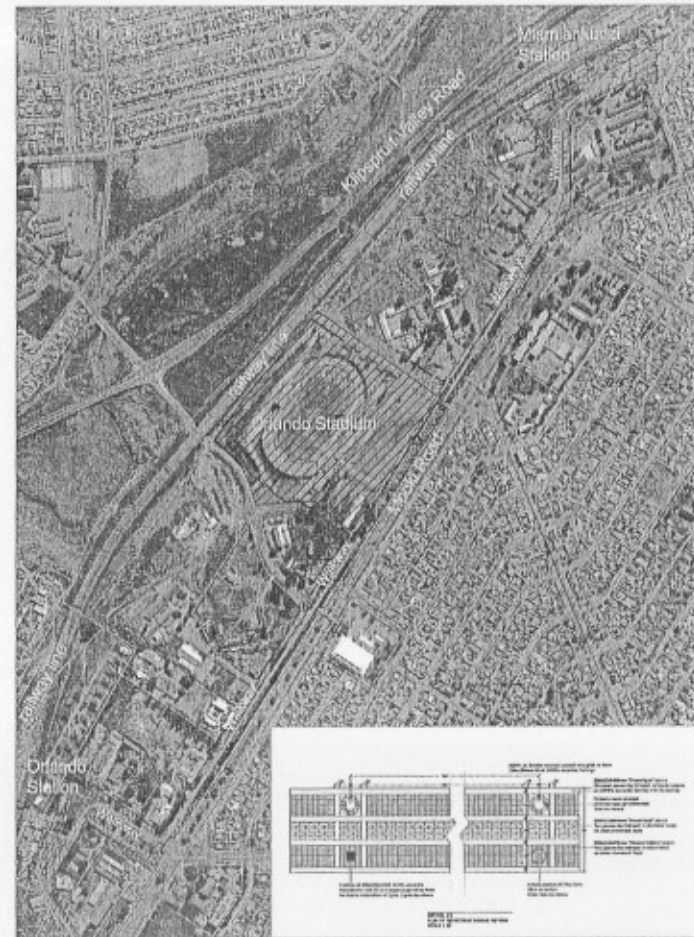
- Types of jobs include:
 - Plastering
 - Bricklaying
 - Painting
 - Tiling

TRAINING VENUE: ORLANDO STADIUM PRECINCT

Project Summary

Outstanding work precinct: lighting, walkways and parking.

Metrorail Station under construction - scheduled for completion in December 2009.



Orlando: Upgrading of Training Venue Precinct
Master Plan

Date: 3 December 2007 HTS Draw: ODP-2010-MP-100-REV03



cover

VENUE PRECINCT : DOBSONVILLE STADIUM



Project Summary

Stadium handed over

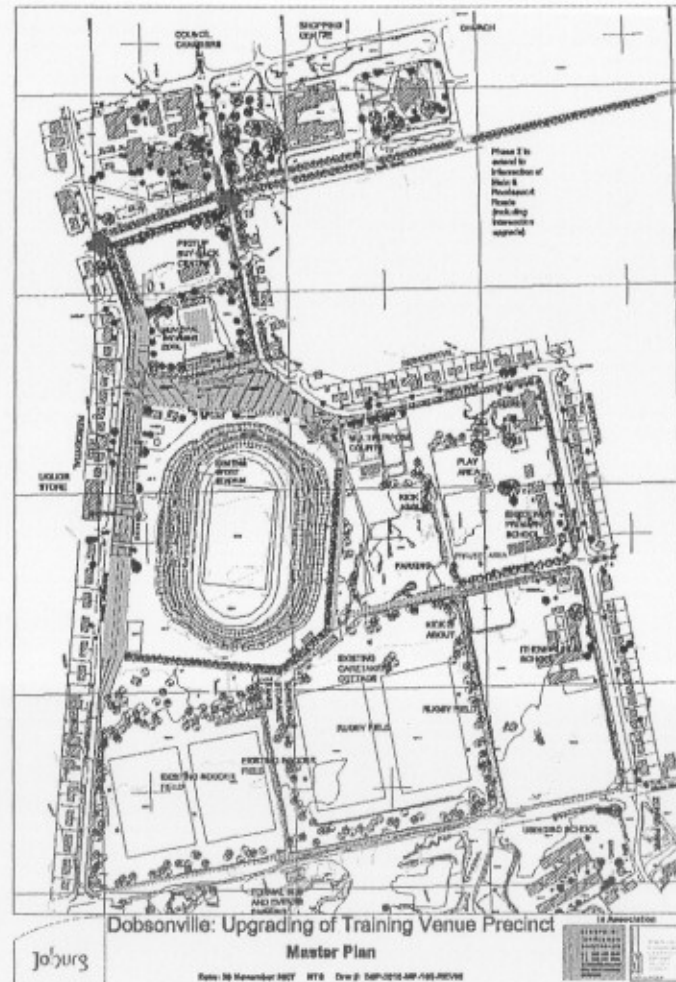
Work on the outer precinct is still under way.

Paving of walkways

Pedestrian mall

Pedestrian and taxi area ✓

Scheduled for completion May 2009 - the stadium and the precinct will be ready and tested well before required deadlines.



VENUE PRECINCT: RAND STADIUM

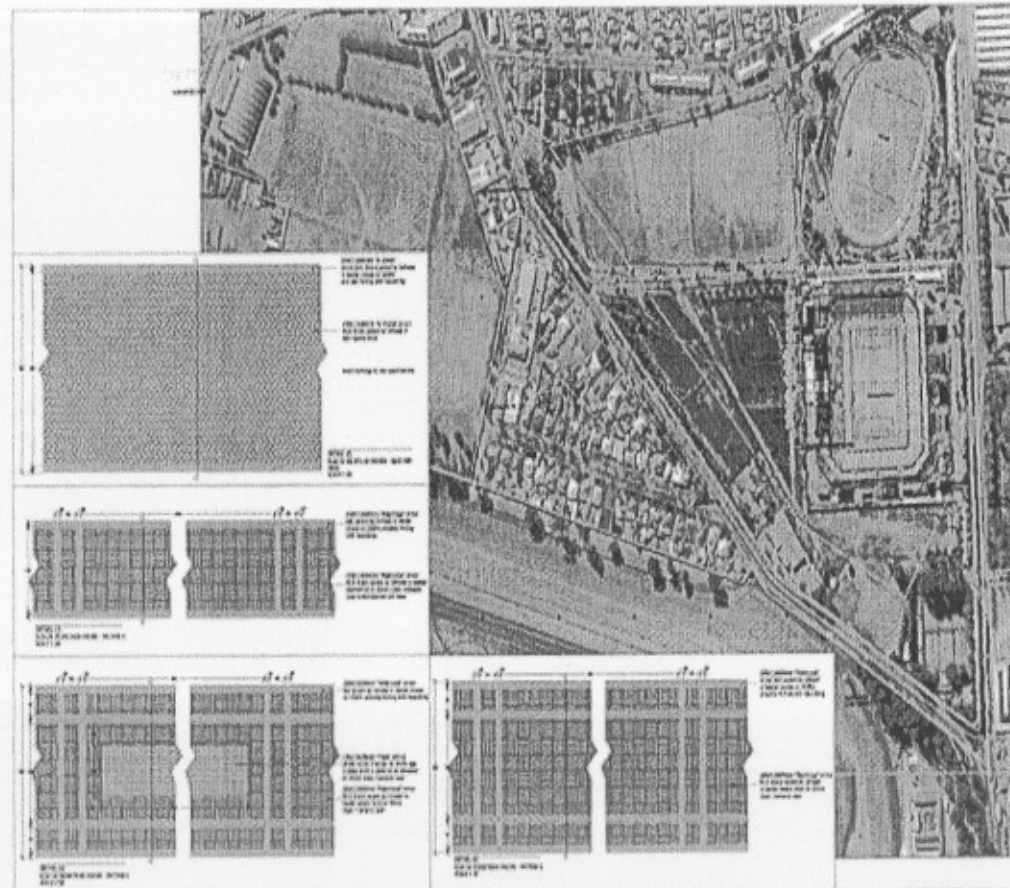
Project Summary

Precinct will be completed well within time frame.

Work primarily landscape and paving.

Scheduled completion April 2009.

Challenge: To south of Moaders, there is a need to rehabilitate the area nearby,



Rand Stadium: Upgrading of Training Venue Precinct
Master Plan

Date: 2 December 2007 K15 Dra 2: OGP 2010-MP-100-REV08



ALL VENUE PRECINCTS



	Compliance	Fan experience	Legacy	Status
<u>Challenges for all venue precincts</u>	Maintenance of the facilities during the period leading to the Confederations Cup and Soccer World Cup	To deliver a seamless service of high quality to fans at all training venues and precincts - and to sustain it for the duration of the World Cup	To manage and exploit the opportunities these world-class venues and precincts will provide for new development opportunities for particularly those living in and around these areas	

INFRASTRUCTURE: SUPPORTING INFRASTRUCTURE

Covered!!

Supporting Infrastructure - water, power and waste management have been divided into three categories:

- Category A (highest priority) have been funded *eg. electricity*
- Categories B and C (lower priorities) have not yet been funded but have also been listed in the infrastructure budget.

Projects to ensure sustainable supply of critical infrastructure services in the run-up to and during the Confederations Cup and the World Cup. ✓

- Water and sanitation at international standard, ✓
 - Uninterrupted electricity supply to all venues and throughout the city, ✓
 - Efficient waste removal and management
 - Category A projects have been fully funded.
- First priority is to ensure that FIFA requirements are met, but also legacy of ensuring higher levels of services to citizens after the World Cup.

SUPPORTING INFRASTRUCTURE: ELECTRICITY



- installation of new electrical distributors in the Nasrec precinct: *commissioning 30 June 2009*
- new street lighting at Nasrec and Ellis Park precincts: *commissioning 31 March 09*
- electrical supply for the Bus Rapid Transit system and to the Northern Gateways: *in progress*
- ensuring a reliable supply of electricity to all traffic lights and the Intelligent Transport System: *in progress*
- upgrade of Doornfontein/Fort standby generators: *in planning*
- upgrade of Siemert Road sub-station: *commissioning 30 April 2010*
- installing stable temporary connections for fan parks: *in planning*
- new distributors from Siemert Road sub-station to proposed new hotel and other developments: *funding to be finalised, no date for commissioning*
- rationalisation of electrical supply in Aeroton to provide standby facilities to stadiums: *in progress*
- 132kV/11kV Crown sub-station: *commissioned 30 September 09*
- upgrade of lighting on routes to Nasrec: *in planning*

SUPPORTING INFRASTRUCTURE: WATER

NB

Covered

- upgrade of Yeoville, Crown Gardens reservoirs: *completion December 2009*
- upgrade of Yeoville supply line: *completion dependent on Environmental Impact Assessment Record of Decision* *Increase the Pipes @ Yeoville Reservoirs*
- Parktown and Dunkeld upgrades: *completion June 2009*
- water and sewer condition audit around match and training venues: *completed June 08*



INFRASTRUCTURE: TRANSPORT OVERVIEW

Progress Summary

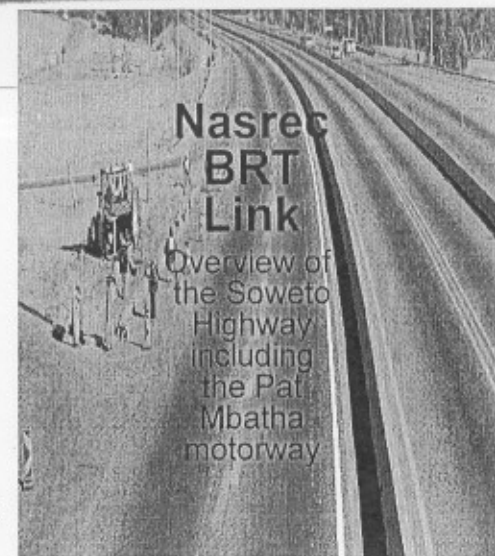
Based on pro-public modal split – 70% public & 30% private ✓

Integrating following components:

- o Existing freeway system;
- o BRT, in particular the north-south corridor that links Soweto, through Parktown to Sunninghill with extensions to the match venues;
- o Inner City Distribution System;
- o Gautrain Rapid Rail Link from the Airport to Sandton ;
- o Upgraded Metrorail links (Park Station, Nasrec, Ellis Park and Orlando).

Supporting these key components are:

- o The Intelligent Transport System
- o Travel Demand Measures
- o Transport hubs in the match stadium precincts
- o Pedestrian links to match and training venue precincts from public transport facilities
- o Linking adjoining areas currently separated by the railway line running through the precincts.



INFRASTRUCTURE:TRANSPORT –HIGH LEVEL & OPERATIONAL PLAN



- The 2010 Transport Operational Plan -completed

The Operational Plan is executed in five parts

- Phase one: Operational Plan framework
- Phase two: Operational Plan detail
- Phase three: implementation
- Phase four: Delivery
- Phase five: Post Event.

INFRASTRUCTURE: TRANSPORT – BUS RAPID TRANSIT (BRT) SYSTEM



This new transport system has three main aims:

- to channel public transport into focused, high frequency corridors;
- to provide improved access between residential areas and economic nodes;
- to allow for better law enforcement for public transport.

It will consist of:

- exclusive median bus lanes along key routes;
- separate, closed median stations every half kilometre or so;
- complementary and feeder routes using smaller buses;
- high-peak frequencies of three to five minutes;
- 18-hour daily operations - 05:00 to 24:00;
- GIS-based BRT control centre;
- a business model that incorporates bus and taxi operators.

INFRASTRUCTURE: TRANSPORT – NASREC HUB



- This is a public transport node that will provide taxi, bus rail and BRT drop-off and pick up points. As a fully-equipped hub, it will provide a range of commercial activities and rest zones.
- Through the BRT and other public transport modes, the hub will be linked to the city, northern suburbs, Soweto, east and west links and O R Tambo Airport.
- The N17 upgrade will be completed by December 2009
- An upgraded Metrorail Station will provide a rail link between the city and Nasrec.

INFRASTRUCTURE: TRANSPORT – PARK & RIDE

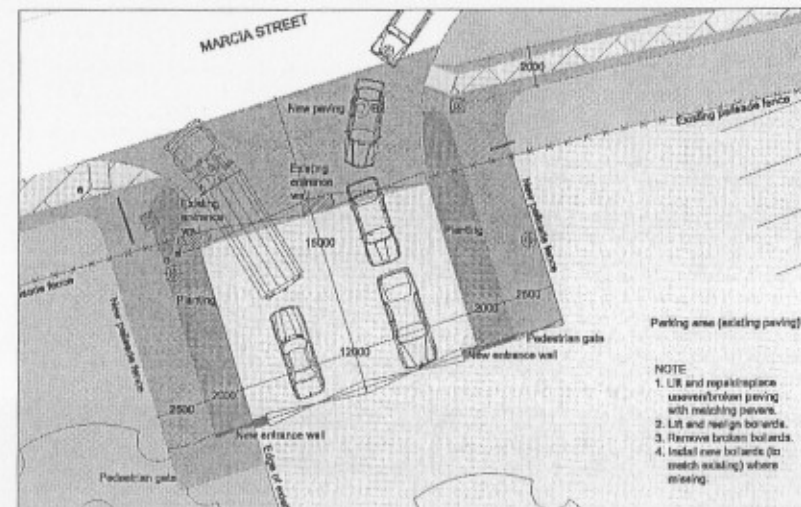
Project Summary

Sites for safe and secure parking of private vehicles and connecting with public transport to match venues are part of the pro-public modal approach to transport.

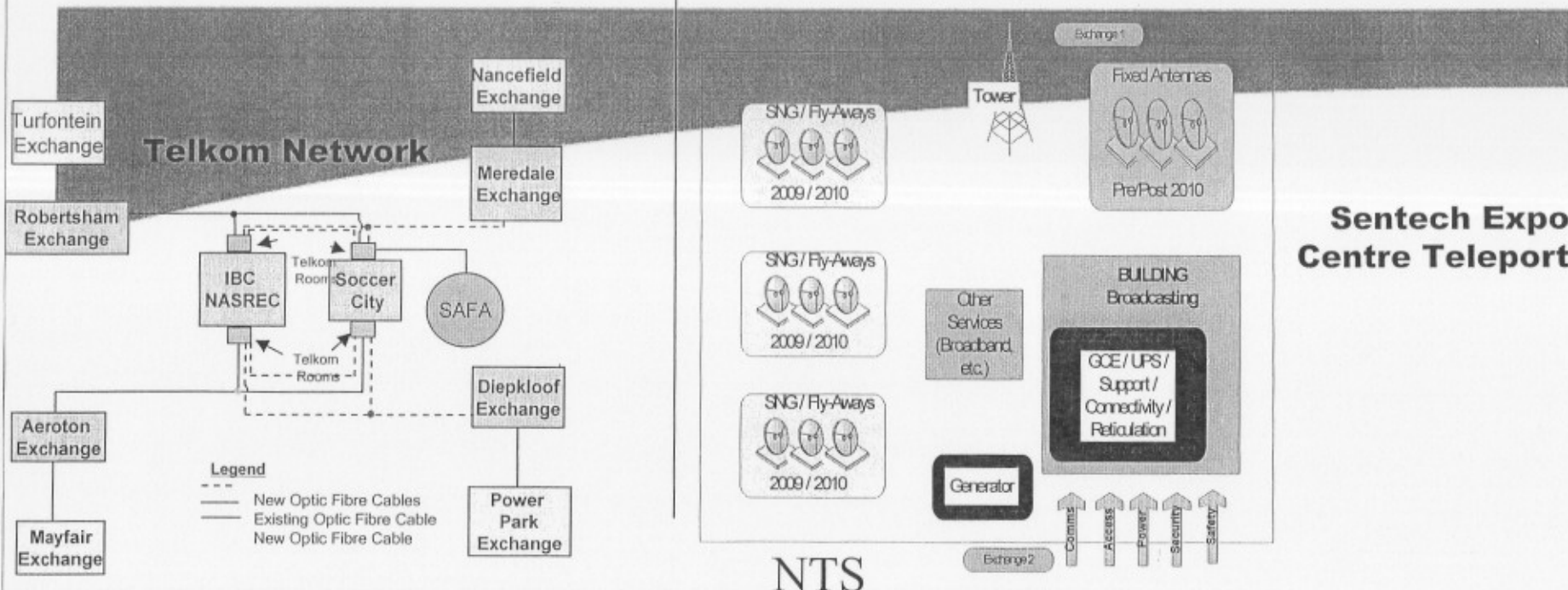
The intention is to reduce significantly the number of private vehicles moving even close to the stadiums by providing four facilities spread around the city.

The following sites have been identified as park-and-ride facilities:

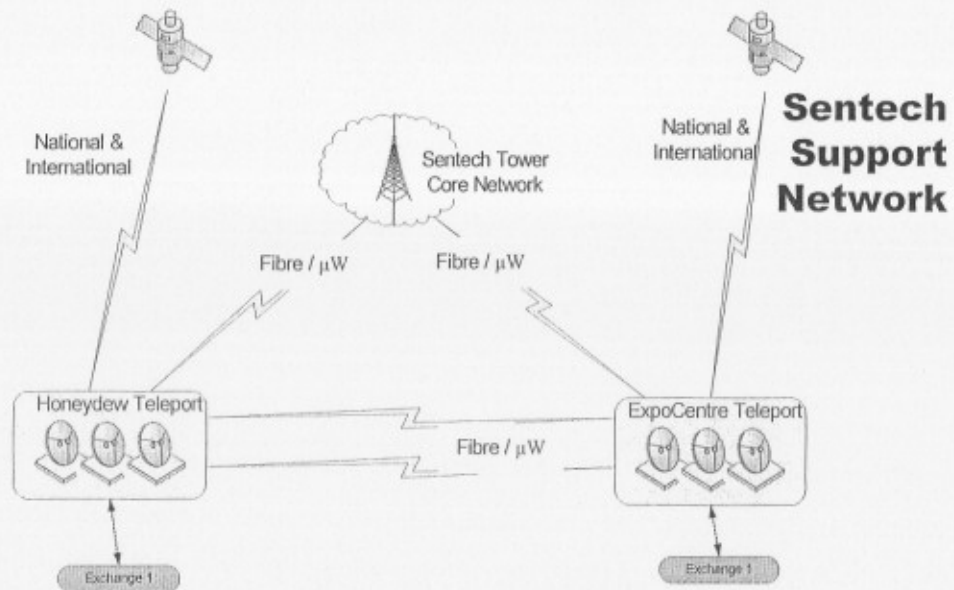
- Marks Park and Rand Stadium for Soccer City matches
- Wits University West Campus and Bezuidenhout Park for Ellis Park matches.



IBC IT&T



NTS



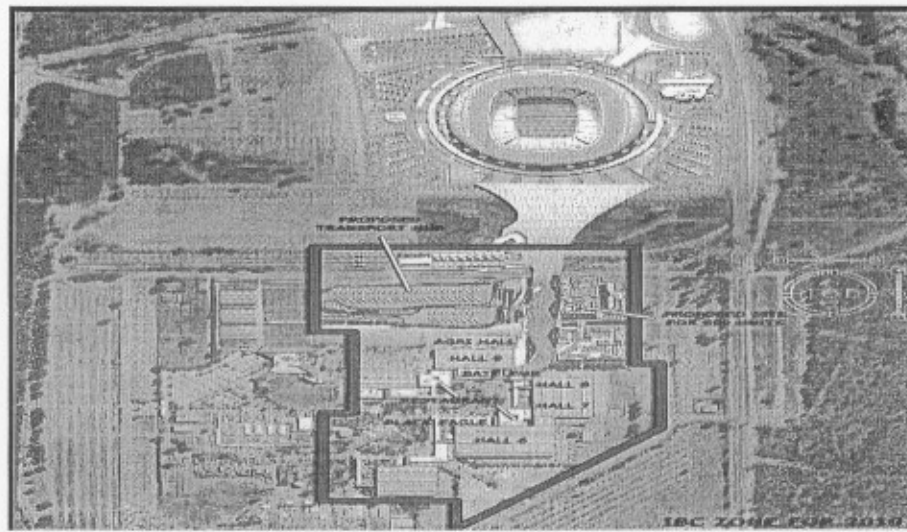
INTERNATIONAL BROADCAST CENTRE (IBC) Connectivity



has entered into an agreement with the Johannesburg Expo Centre to use the facilities at Nasrec to house this Centre.

will be the media hub

ing and feasibility study of the IT and broadcasting infrastructure that is being planned at the Expo Centre to be conducted to recommend the best long-term use of the and the optimisation of the investment being made in the ICT infrastructure.



INFORMATION AND COMMUNICATIONS TECHNOLOGY (ICT)



This project is built on leveraging existing ICT investment in the city (home to 60% of all IT enterprises in South Africa) and supplementing it with new projects that will ensure readiness to stage what is the world's biggest sporting event.

This connectivity will include:

- networked stadiums linked to an IT centre (at Nasrec);
- a fixed and wireless network infrastructure easily accessible to visiting fans and citizens;
- sophisticated call centres, centrally coordinated, to ensure timeous and updated information is continually available to tourists and fans;
- high quality, round-the-clock connectivity for the thousands of media representatives who will be covering the World Cup;
- ICT support for traffic management and for safety and security management.