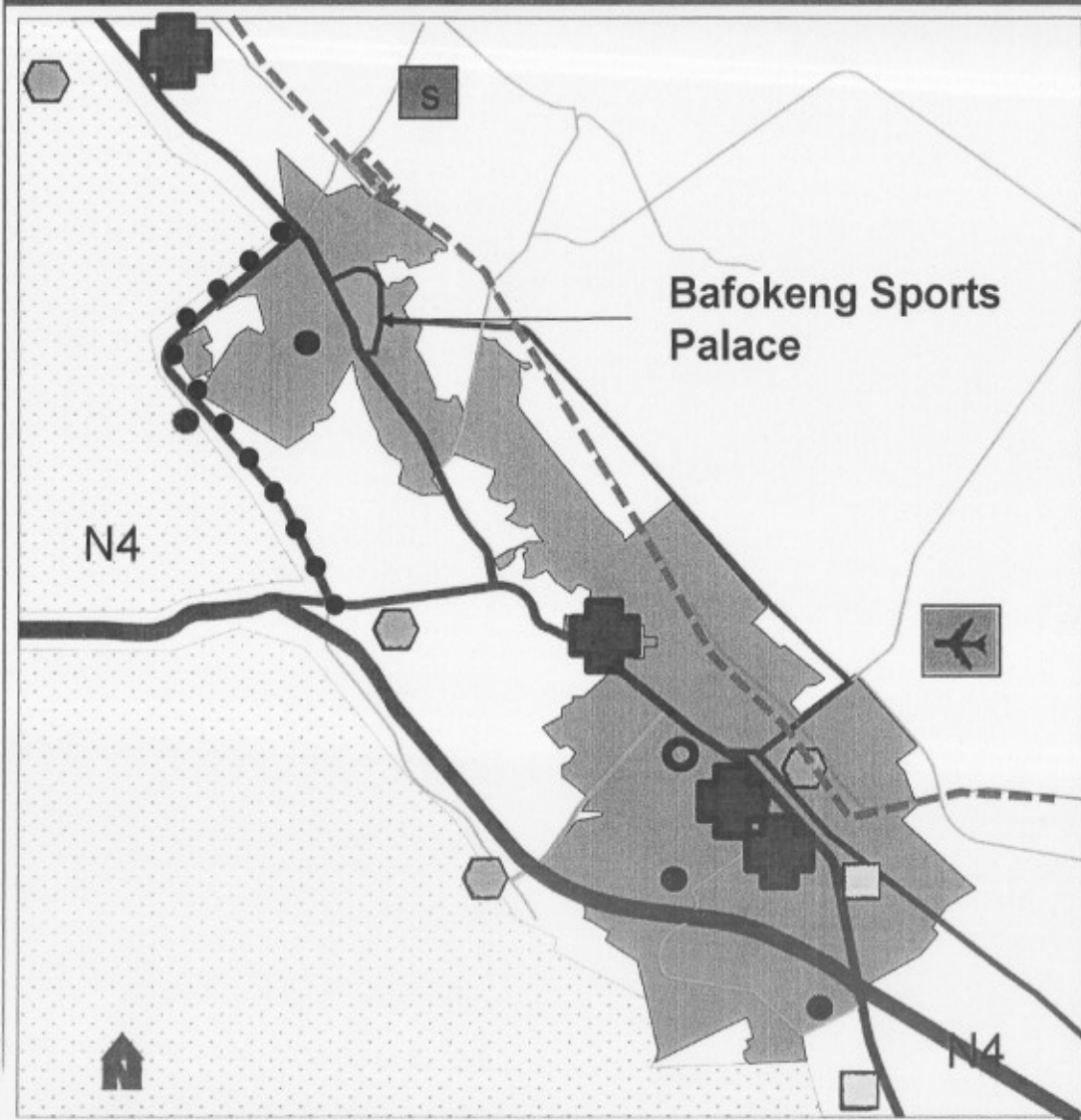




3. ROADS INFRASTRUCTURE

2010 EVENT SITES

■ Pilanesburg 35km



KEY:

Airport

Hospital

Hotel

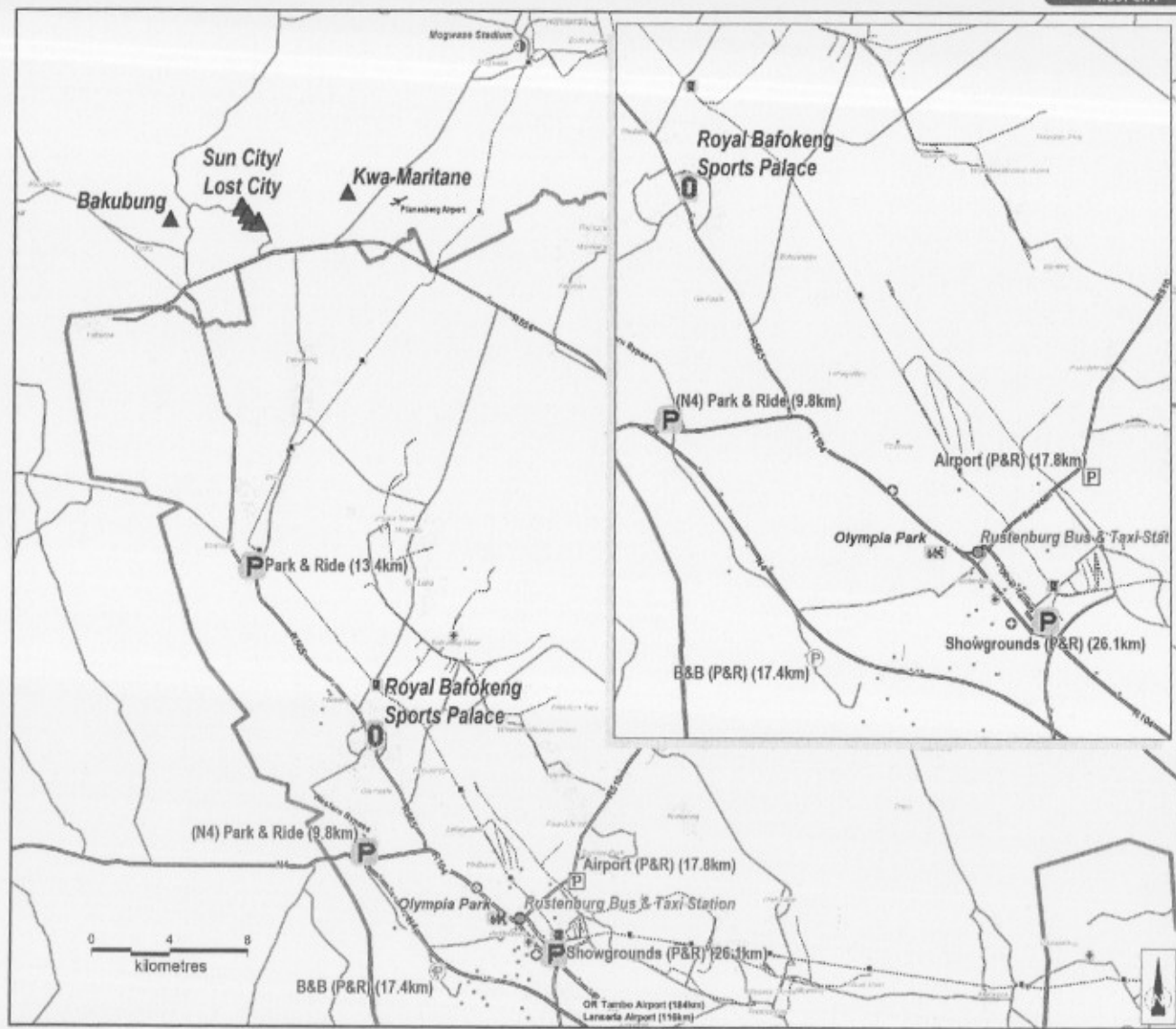
New Road

Park & Ride

Railway Line & Station

2010 FIFA WORLD CUP SOUTH AFRICA™

TRANSPORT FACILITIES



RUSTENBURG 2010 OPERATIONAL PLAN

Overview of the Rustenburg 2010 Facilities

LEGEND

Roads

- Highway
- Main Roads
- Secondary Street
- Railway Line

Park & Ride Sites

- Public
- B&B
- Alternative

Stadium

- FIFA Fan Park (11.7km)
- Training Venue (48.6km)
- FIFA Hotels (40.1km)
- Team Hotels (42.2km)
- Other Accommodation
- Regional Hospital (16.0km)
- Railway Stations
- Public Transport Hub (13.0km)

RUSTENBURG LOCAL MUNICIPALITY

Drawn	1: 1/2000
Date	September 2008
Project	Rustenburg 2010 Operation Plan
File	2008_RCP_P12_1a_2008.mxd
Author	Urban & Environmental
Scale	1: 100,000



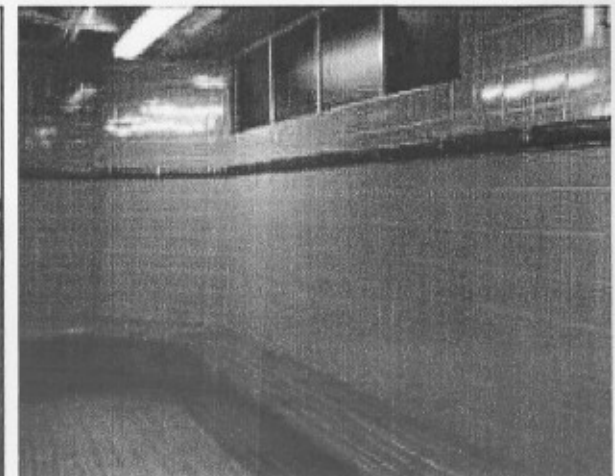
4. TRAINING VENUES

Stadium Overview - Olympia Park Stadium



Key information

- Seating: 22 000
- Floodlights: 850 lux currently – requires service (1000 lux possible)
- Pitch: irrigation requires adjustment to ensure 100% coverage, current size 98x66 requires extension
 - Secure perimeter, private facility

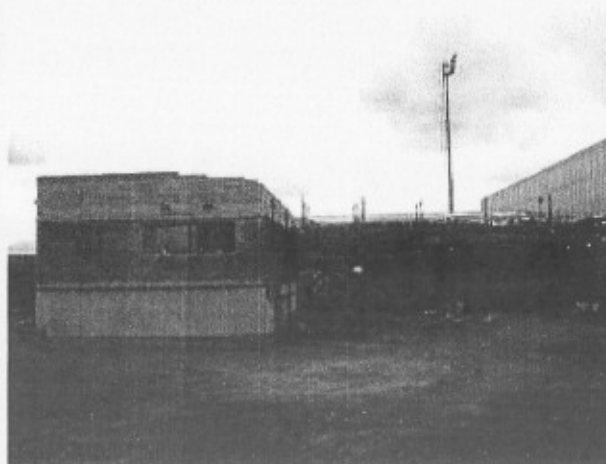


STADIUM OVERVIEW - MOGWASE STADIUM



Key information

- Seating: 2000 planned
- Floodlights: 500 lux planned
- Pitch: contractor has been appointed, base has been constructed and levelled
drainage installation just started
 - Facility is completely fenced, secure and private

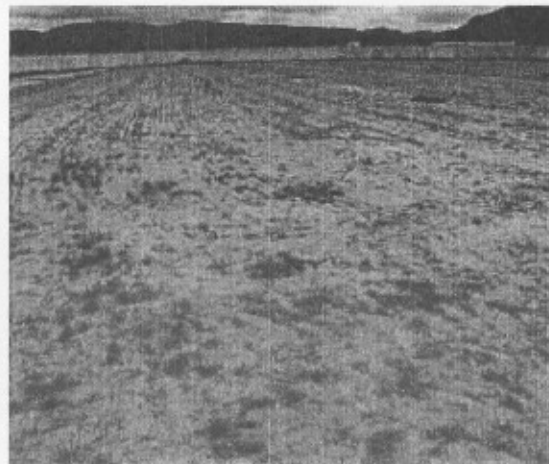
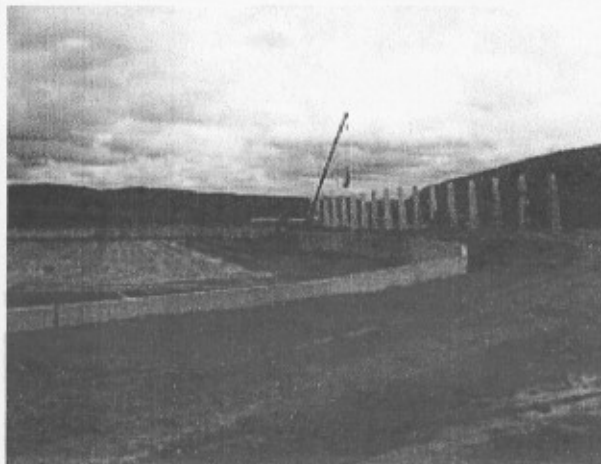


STADIUM OVERVIEW - MORULENG STADIUM



Key information

- Construction does not appear well advanced
- Pitch: drainage, irrigation, growing medium (silica sand & stabilizer), kikuyu sprigs completed, Kikuyu requires 10-12 weeks to establish
- Perimeter fencing to begin in 2 weeks
- Floodlights: 1000 lux planned, end-April completion





5. FAN PARK

RUSTENBURG HOER SKOOL



- Fan Park for 2009 Confederations Cup and 2010 World Cup will be osted at Rustenburg Hoer Skool;
- Situated in the main entrance of the city;
- Parking will be allocated at the Civic Centre, Paul Bodenstein Park and Show Grounds about 2 KM drive.



6. ACCOMODATION

CALENDAR OF EVENTS



- LAUNCH OF THE POSTER
- SCHOOLS PROGRAMME
- 2009 CONFED CUP MUSIC BASH
- 2010 ROADSHOWS IN THE BOJANALA DISTRICT
- 2009 CONFED CUP BIKE RALLY
- PEACE CUP (BAFANA BAFANA & NORWAY) 28th MARCH 09
- BRITISH AND IRISH LIONS MAY 2009
- DISTRICT MAYORAL CUP MAY 2009
- PUBLIC PARTICIPATION THROUGH BY-LAW PROCESS
- HOSTING OF MAJOR PSL GAMES
- KINGS CUP
- CONFED CUP CAR WASH
- BLITZ AT TAXI RANKS
- PUBLIC VIEWING IN VILLAGES OF BAFOKENG, BAKGATLA AND THE MATHOPE

AS AN AFRICAN EVENT



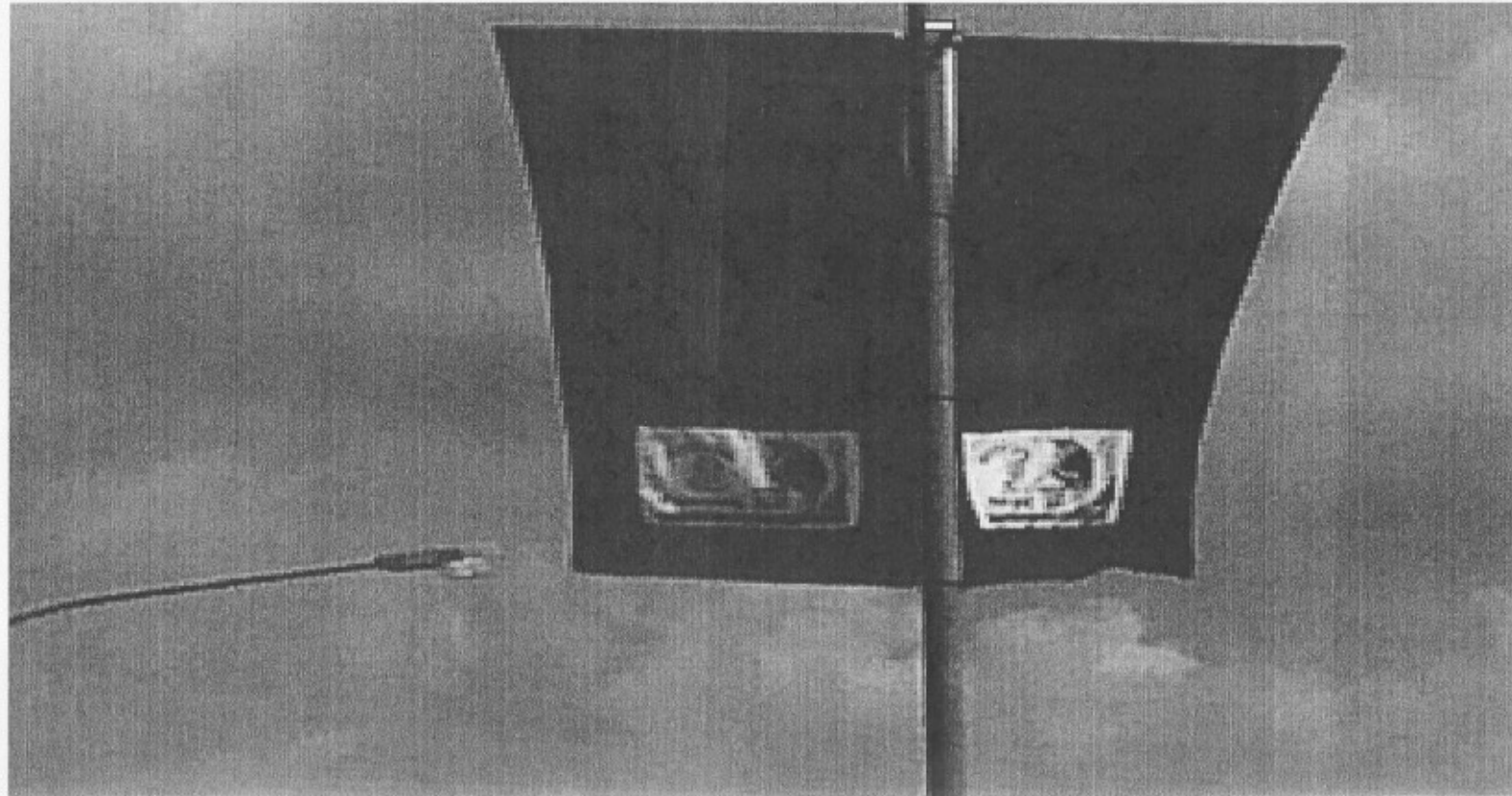
- WORKING TOGETHER WITH GOVERNMENT OF BOTSWANA AND BOTSWANA FOOTBALL ASSOCIATION:
 - WORKSHOPS AND SEMINARS
 - AWARENESS CAMPAIGNS
 - MARKETING OF GAMES
 - TICKET SALES PROMOTIONS
 - REGIONAL SOCCER TOURNAMENTS INCLUDING TEAMS FROM BOTSWANA, LESOTHO & SWAZILAND.
- INTERGRATING FCC & FWC TOURNAMENTS INTO PLATINUM STARS MARKETING PROGRAMME

CITY BEAUTIFICATION



- BEAUTIFICATION OF FOUR MAIN ENTRANCES
- BILL BOARD ADVERTISING
- RENOVATION AND UPGRADING OF THE TAXI RANK
- STREET LIGHT ADVERTISING
- CLEANING CAMPAIGNS

STREET LIGHTS ADVERTISING





8. LEGACY

VOLUNTEER PROGRAMME



- 858 VOLUNTEERS ARE REQUIRED FOR THE 2009 CONFEDERATIONS CUP;
- PROCESS OF INTERVIEWS STARTED FROM 9th -21st FEBRUARY 2009;
- 1200 CANDIDATES WERE SHORTLISTED AND INTERVIEWED;
- TRAINING WILL COMMENCE FROM THE FF DATES:
 - 13 -15 MARCH 2009;
 - 17 -19 APRIL 2009.

LEGACY INFRASTRUCTURE



- BUILDING OF A NEW VISITORS INFORMATION CENTRE;
- BUILDING OF A NEW WASTE MANAGEMENT PLANT;
- BUILDING OF A NEW TRAINING VENUE BY THE BAKGATLA BA KGAFELA;
- CONVERSION OF THE MATALE MIDDLE SCHOOL INTO A SPORTS MUSEUM;
- BUILDING OF A NEW SPORTS CAMPUS BY THE ROYAL BAFOKENG NATION.



10. SECURITY



- SAFETY & SECURITY PILLAR IS MEETING ON MONTHLY BASIS;
- INTERVIEWS FOR THE 2009 MARSHALLS ARE CURRENTLY CONDUCTED;
- 10 FIRE FIGHTERS WERE NOMINATED TO UNDERGO TRAINING AT SASOL AND HAZMAT TECHNICIANS FOR BIOLOGICAL AND CHEMICAL MASS DISTRACTION IN PREPARATION FOR BOTH 2009 FCC AND 2010 WORLD CUP TOURNAMENTS;
- AS PART OF REINFORCING EMERGENCY SERVICES AND DISASTER MANAGEMENT, THE MUNICIPALITY HAS PURCHASED A RAPID INTERVENTION TRUCK (R 600 000.00) AND A 4X4 FIRE FIGHTING TRUCK WORTH R 2.8M;
- DISASTER MANAGEMENT CENTER HAS BEEN UPGRADED AND RESOURCED;
- CCTV CAMERAS HAVE BEEN INSTALLED AND THIS PROJECT HAS CREATED NINETEEN JOBS;
- RLM IS CURRENTLY ERECTING TRAFFIC LIGHTS ON THE ROAD LEADING TO ROYAL BAFOKENG STADIUM;
- SPECIAL COURTS ARE IDENTIFIED FOR THESE GAMES WHEREBY OFFENDERS WILL BE TRIALED, ONE WILL BE LOCATED IN BAFOKENG CIVIC CENTRE.



9. CHALLENGES



- **FUNDING FOR THE UPGRADING OF THE STADIUM**

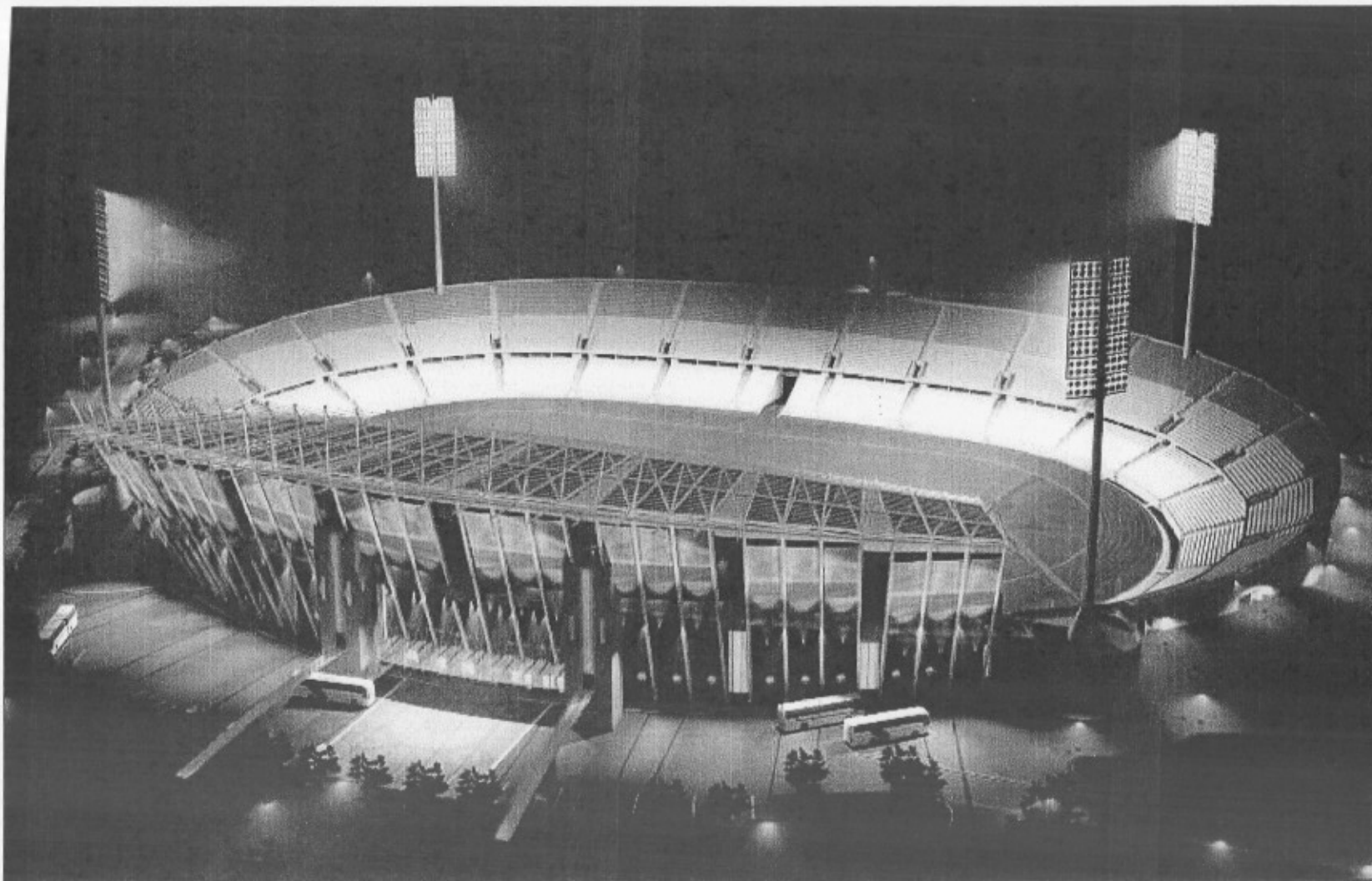
GOVERNMENT CONTRIBUTION	R 192 M
ROYAL BAFOKENG NATION	R 140 M
SHORTFALL	R 141 M
TOTAL	R 473 M

ROADS INFRASTRUCTURE SHORTFALL



PROJECT DESCRIPTION	COST ESTIMATE	FUNDING APPROVED BY DORA	ADDITIONAL FUNDING REQUIRED
WESTERN BY-PASS	R 200M	R 141.4 M	R 60 M (Contributed by BAFOKENG)
PHOKENG LINK ROAD	R 8 M	R 8 M	R 0.00
PARK AND RIDE FACILITIES	R 4 M	R 4M	R 0.00
PHOKENG RING-ROAD	R 45 M	R 38.67 M	R 6.32 M
P16-2	R 220 M	R 48 M	R 172 M
EASTERN BY-PASS	R 90 M	R 35 M	R 55 M
RUSTENBURG TRANSPORT TERMINAL	R 180 M	R 24 M	R156 M >R 106 M > R 30M > R 20M

Stadium Overview – Stadium, capacity 44 500



2010 FIFA WORLD CUP SOUTH AFRICA™