



**RUSTENBURG STATE OF READINESS:
2009 CONFEDERATIONS CUP
24 FEB 2009**

**2010 COORDINATOR:
Mr. NKETU MATIMA**

CONTENT



- STADIUM OVERVIEW
- STADIUM PRESCINT
- ROADS INFRASTRUCTURE
- TRAINING VENUES
- FAN PARK
- ACCOMODATION
- MARKETING
- LEGACY
- SECURITY
- CHALLENGES



1. STADIUM OVERVIEW

STADIUM PROGRESS



Progress to Date

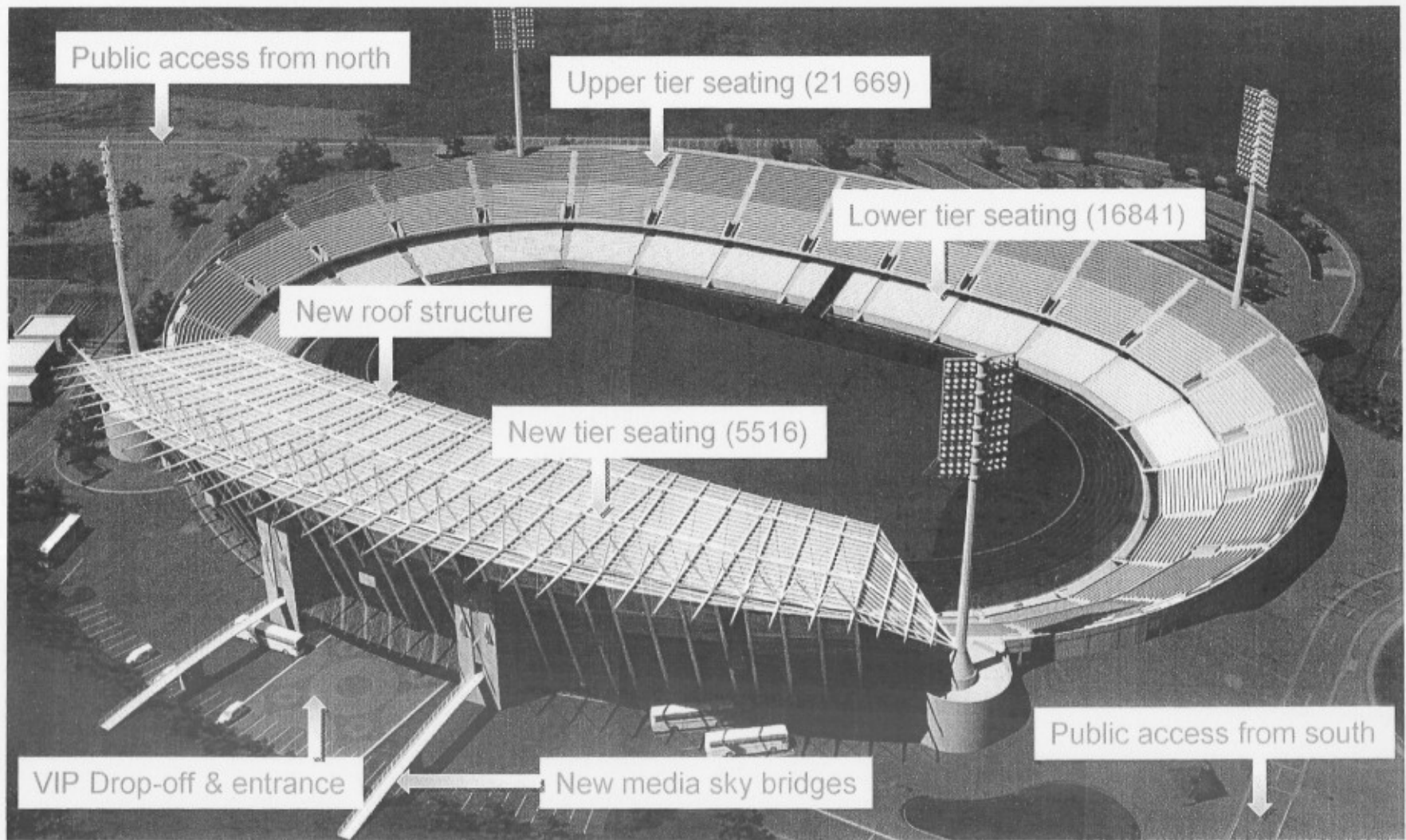
98% Complete Stadium Structure
(includes Stands, Roof , Sky Boxes, Turnstiles etc)

95% Refurbishments and Renovation
(Seats, Sky Boxes, Pitch etc)

90% External Works
(includes paving, road networks, landscaping etc)

ALL THE ABOVE WORKS TO BE COMPLETED BY END FEB 09

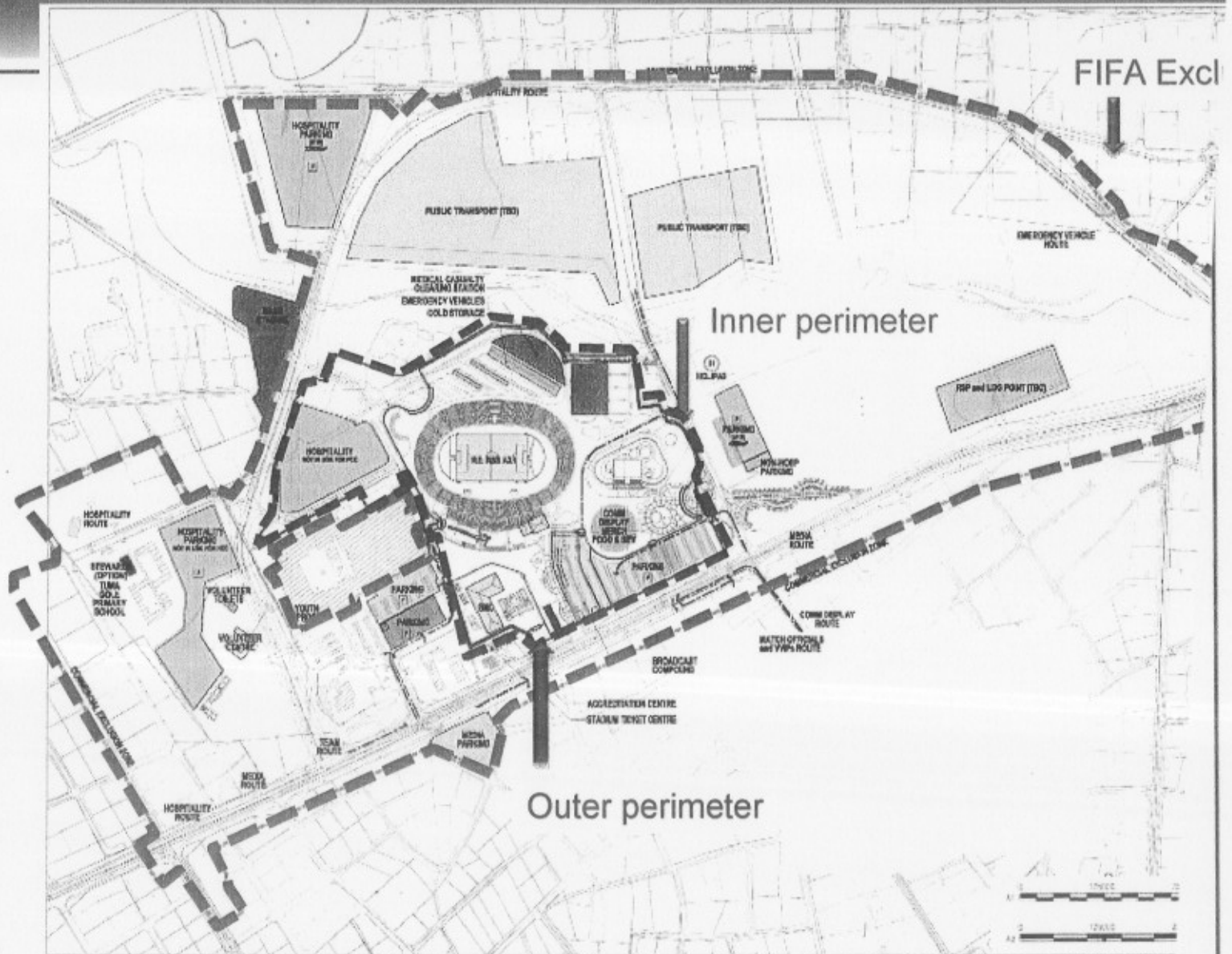
STADIUM DESIGN: OVERVIEW



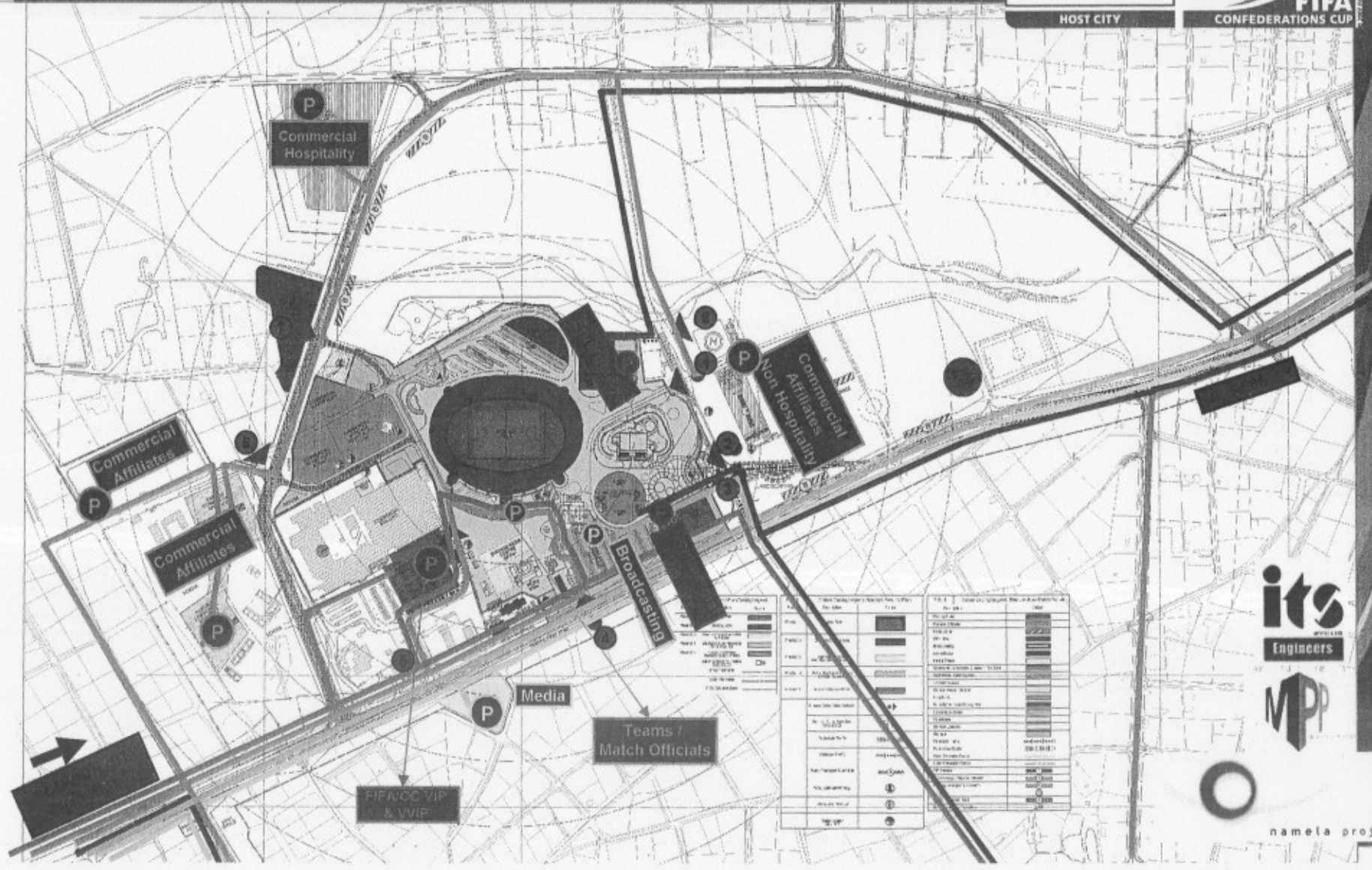


2. STADIUM PRESCINT

Stadium Precinct – Royal Bafokeng



ACCESS AND EGRESS ROUTES AROUND THE STADIUM



Symbol	Description
(P)	Parking Area
(S)	Stadium
(M)	Media
(B)	Broadcasting
(C)	Commercial
(V)	VIP
(O)	OC (Organizing Committee)
(F)	FIFA
(T)	Teams / Match Officials
(H)	Hospitality
(A)	Affiliates
(R)	Road
(R)	Railway
(G)	Green Space
(W)	Water
(E)	Electricity
(G)	Gas
(W)	Water
(S)	Sanitation
(T)	Telecommunications
(F)	Fuel
(O)	Other



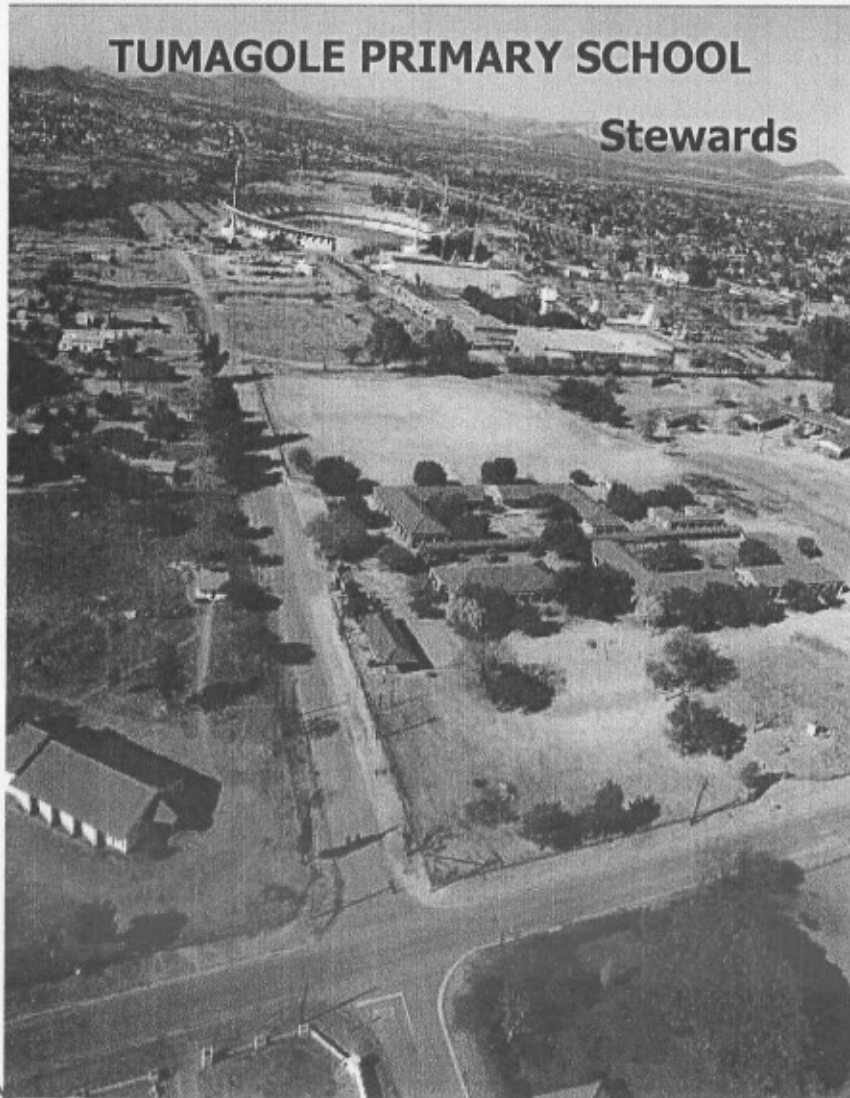
namela projects

Permanent Structures



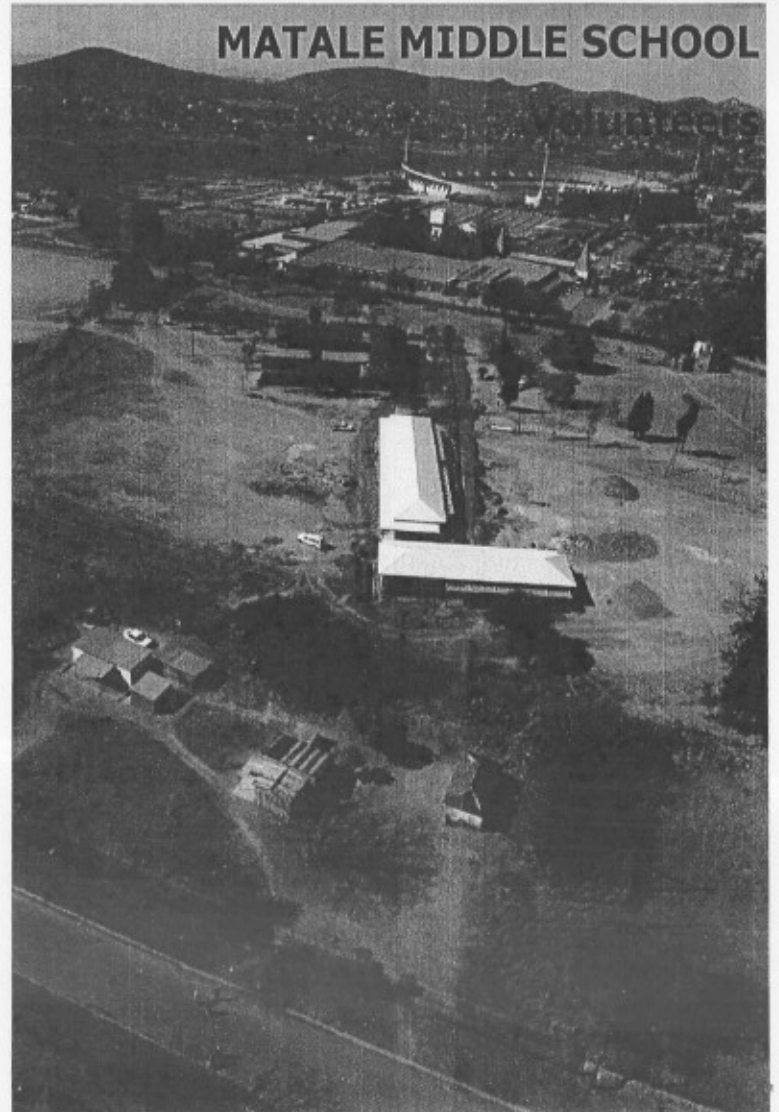
TUMAGOLE PRIMARY SCHOOL

Stewards



MATALE MIDDLE SCHOOL

Stewards



INSTITUTIONAL ARRANGEMENT



HOST CITY / STADIUM MANAGEMENT / LOC:

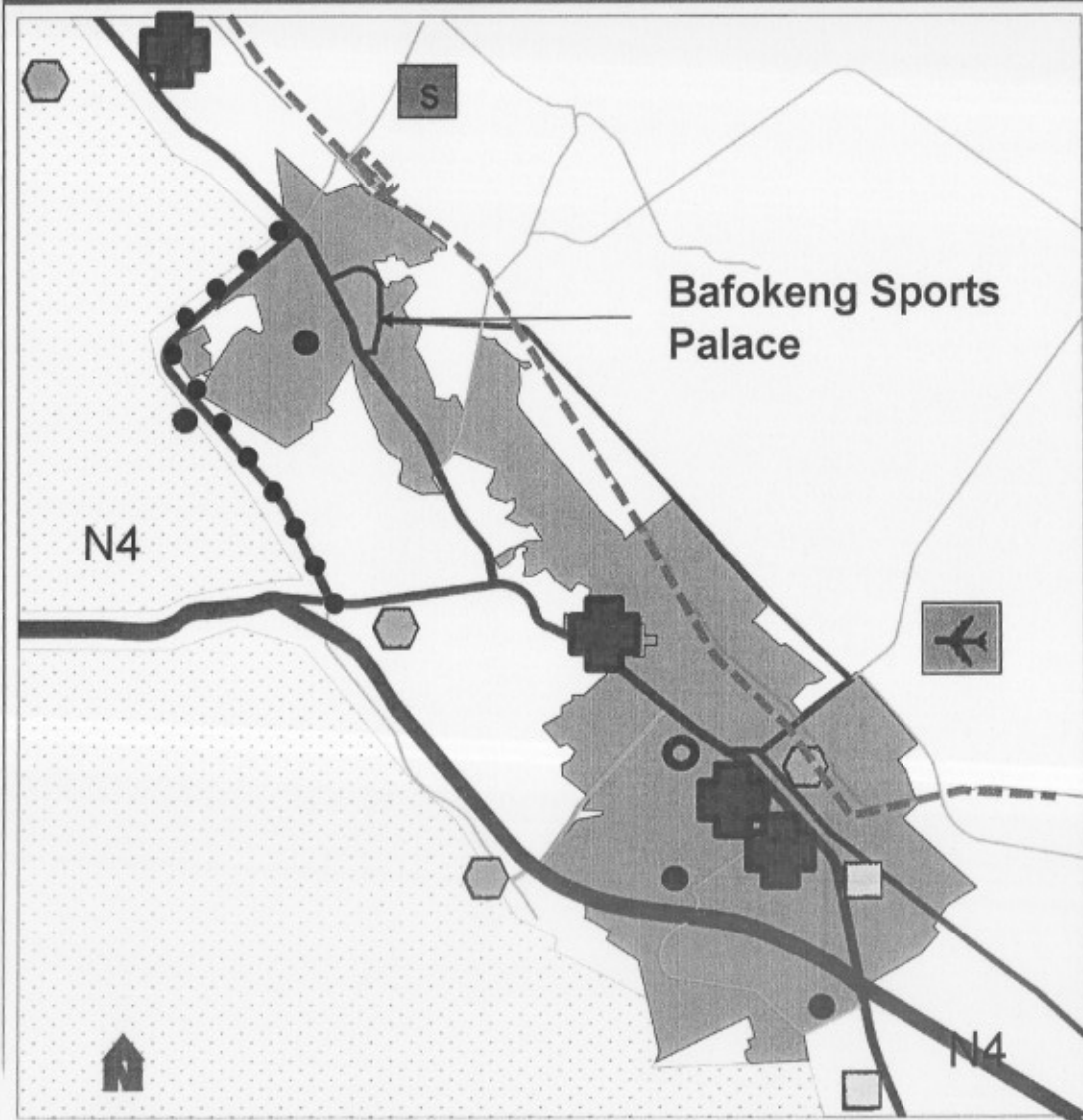
- ***HOST CITY COORDINATOR: MR. NKETU MATIMA***
- ***PROVINCIAL COORDINATOR: MR. KENNEDY MOSIAPOA***
- ***DISTRICT COORDINATOR: MR. INNOCENT SIROVHA***
- ***STADIUM MANAGEMENT: MR. GEORGE KHUNOU***
- ***VENUE MANAGER: MR. MPHO MODISAKENG***



3. ROADS INFRASTRUCTURE

2010 EVENT SITES

■ Pilanesburg 35km



KEY:

Airport

Hospital

Hotel

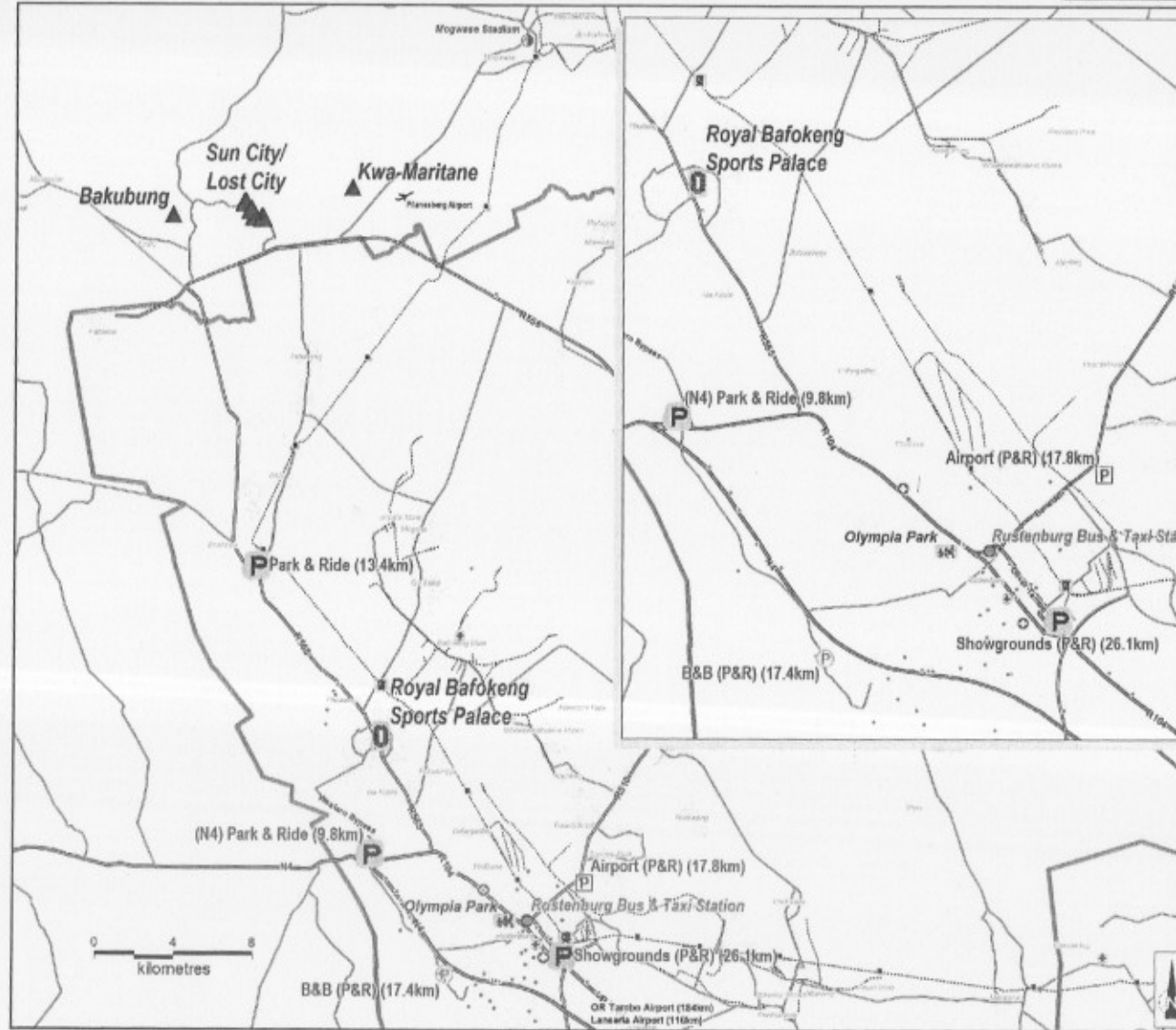
New Road

Park & Ride

Railway Line & Station

2010 FIFA WORLD CUP SOUTH AFRICA™

TRANSPORT FACILITIES



RUSTENBURG 2010 OPERATIONAL PLAN

TITLE: Overview of the Rustenburg 2010 Facilities

LEGEND

Roads

- Highway
- Main Roads
- Secondary Street
- Railway Line

Park & Ride Sites

- Public
- B&B
- Alternative

Other Facilities

- Stadium
- FIFA Fan Park (11.7km)
- Training Venue (48.6km)
- FIFA Hotels (40.1km)
- Team Hotels (42.2km)
- Other Accommodation
- Regional Hospital (16.0km)
- Railway Stations
- Public Transport Hub (13.0km)

RUSTENBURG LOCAL MUNICIPALITY

Drawn	T. Mkhabela
Case	Rustenburg 2010
Project	Rustenburg 2010 Operational Plan
Date	18th SEP 2010 11:26 AM
Project No.	2010/09/18/11:26 AM
Scale	1:10,000