

Presentation to Portfolio Committee on Water Affairs and Forestry

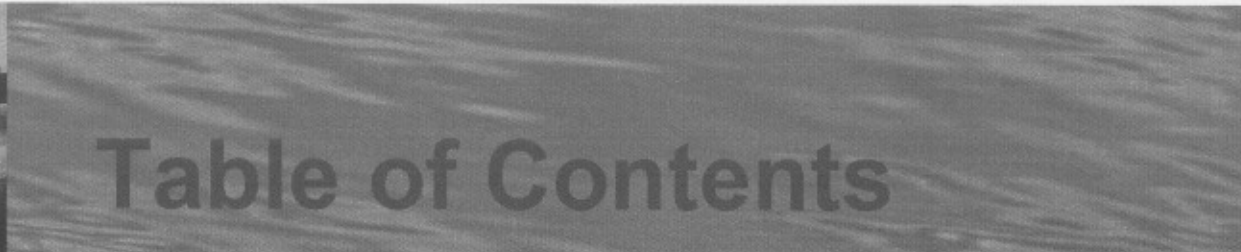
by

BOTSHELO WATER

Annual Report 2006/2007

Date : 13 August 2008





- 1. Area of Operation
- 2. Governance Structures
- 3. Water Quality
- 4. Infrastructure
- 5. Corporate Services
- 6. Financials





Area of Operation

- Operate in North West Province,
- BW maintain schemes in Urban, peri-urban and rural areas of the following WSAs:
 - Ngaka Modiri Molema District Municipality
 - Dr Ruth Segomotsi District Municipality
- As Implementing Agency of TSWASA Water Scheme (RSA and Botswana).





Cont ... Operations

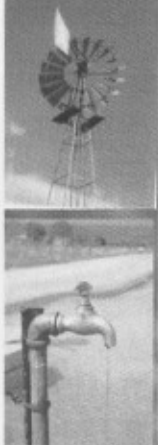
- As Implementing Agency of TSWASA Water Scheme (RSA and Botswana).
- TSWASA Water Scheme provides Botswana with raw water.
- Operates Waste Water Treatment Works (minimal)

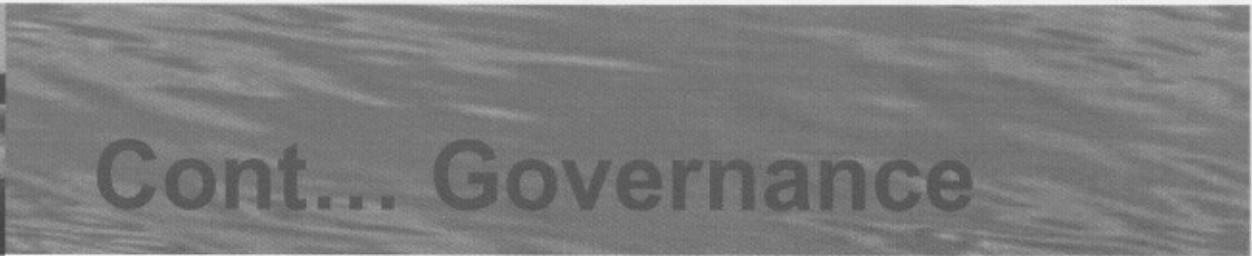




Governance Structures

- The present Board was appointed on the 1st July 2007.
- The previous Board was appointed for 18 months with specific directives to implement recommendations of the forensic investigations.
- The term of the previous Board ended December 2006
- BW operated for six (6) months (Jan 2007- June 2007) without a Board.
- The new Board appointed Executives in Oct/Nov 2007.





Cont... Governance

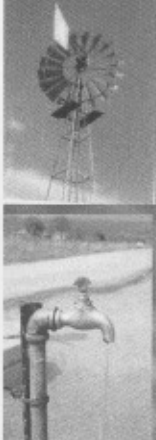
- During this financial year BW did not have Audit and Risk management committee.
- An internal Audit work was done for BW in respect of controls on payments.
- The audit found weaknesses in respect of payment processes.





Water Quality Status

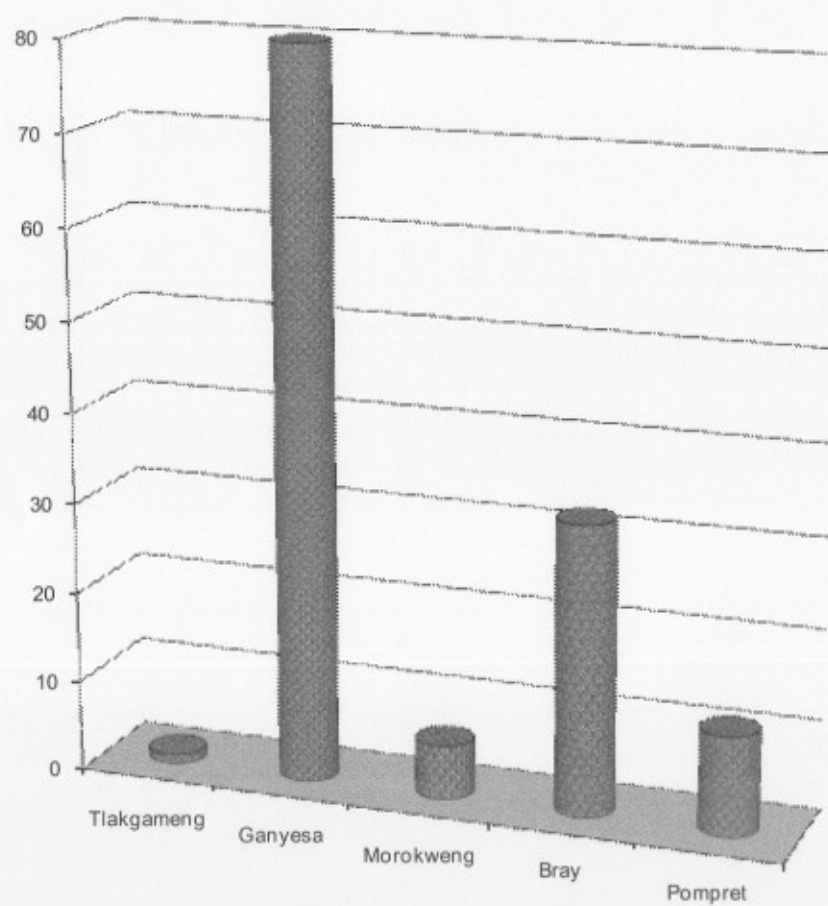
- NW Province relies mostly on underground water.
- BW abstract water from Setumo dam, Molatedi dam, aquifers.
- BW operate and maintains more than 500 boreholes and six water purification plants.
- Boreholes are tested according to the SANS 241 guidelines and rectifications done accordingly.





Boreholes : Total Coliforms /100 ml

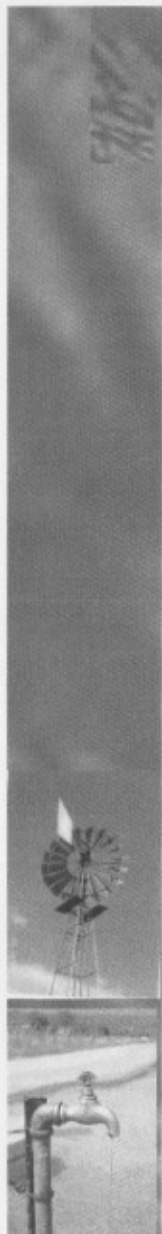
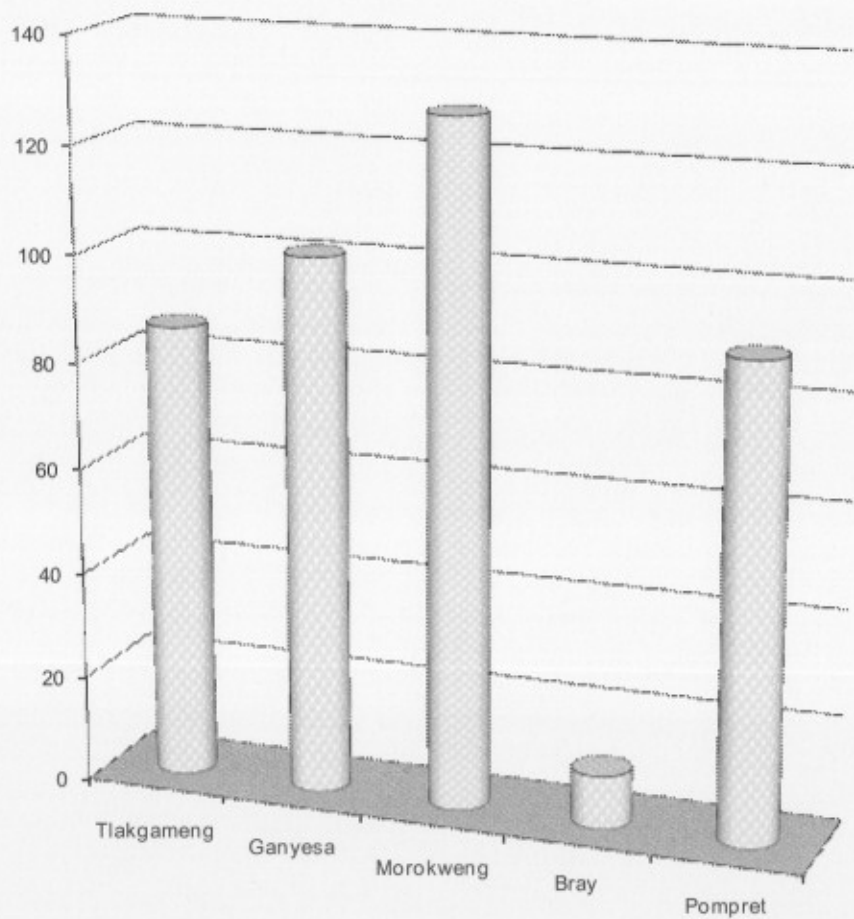
Total coliforms/100ml : Class 1 requirements (5.0)





Boreholes : Calcium mg/l

Calcium mg/l : Class 1 requirements (<150)





Boreholes : pH & Turbidity NTU

pH : Class 1 requirements (5.0-9.5)
Turbidity NTU : Class 1 requirements <1

