

# What can we do to help

- We need to impress on our local politicians and officials the importance of water and waste services on the health and welfare of the community and the environment.
- We need to have more Water and Sanitation Education Programs
- We need to encourage LA's to identify staff who are competent to manage the plant and equipment that is in place.
- We need to build up the staff in the form of "on the job", part-time and full time training – technical and social skills
- We need to identify "experts" who would be available to give advice at all times
- We need to insist that proper monitoring takes place so that the correct management and planning decisions can be taken
- **AS INDIVIDUALS – WE NEED TO TAKE RESPONSIBILITY FOR OUR OWN BACK-YARD**

# How can we do it

- Information campaigns should be started to inform our politicians, officials and communities of
  - the importance of services, good housekeeping
  - importance of high environmental standards
  - that money be allocated to their maintenance and upgrading
  - that the community must take responsibility for what happens in their own backyard
- Competent, enthusiastic and motivated staff must be appointed to manage the services
- Training needs to be a priority and all effort must be made to ensure that the staff are equipped with adequate knowledge to manage all the technical services
- **OFFICIALS and POLITICIANS MUST SERVE THEIR PEOPLE BETTER**

# How can we do it cont.

- Encourage LA staff and communities to have contacts with “consultants” to sort out difficulties --- HOT-LINE -- to be pro-active (this could be at Provincial level)
- Equip officials with simple but effective tools to collect information on the operational aspects of the wastewater treatment works and to do simple analyses on-site (guidelines)
- Get professional institutions involved to help with training and capacity building
- Encourage water and sanitation staff involved to become members of professional Institutions
- Need Institutions of Learning to be more active in the communication with and education of communities

# Cause and Effect

- We cannot allow waste and sanitation services to deteriorate to such an extent that it starts having a massive impact on the community's health
- We try to solve the results of a problem without even trying to identify the causes
- Bad waste management practices (cause) lead to a sick community who then have a clinic built to treat the illness (effect)
- What type of logic is that???



# Children crossing a stream in Khayelitsha



## **Storm-water discharge to the sea at Monwabisi**

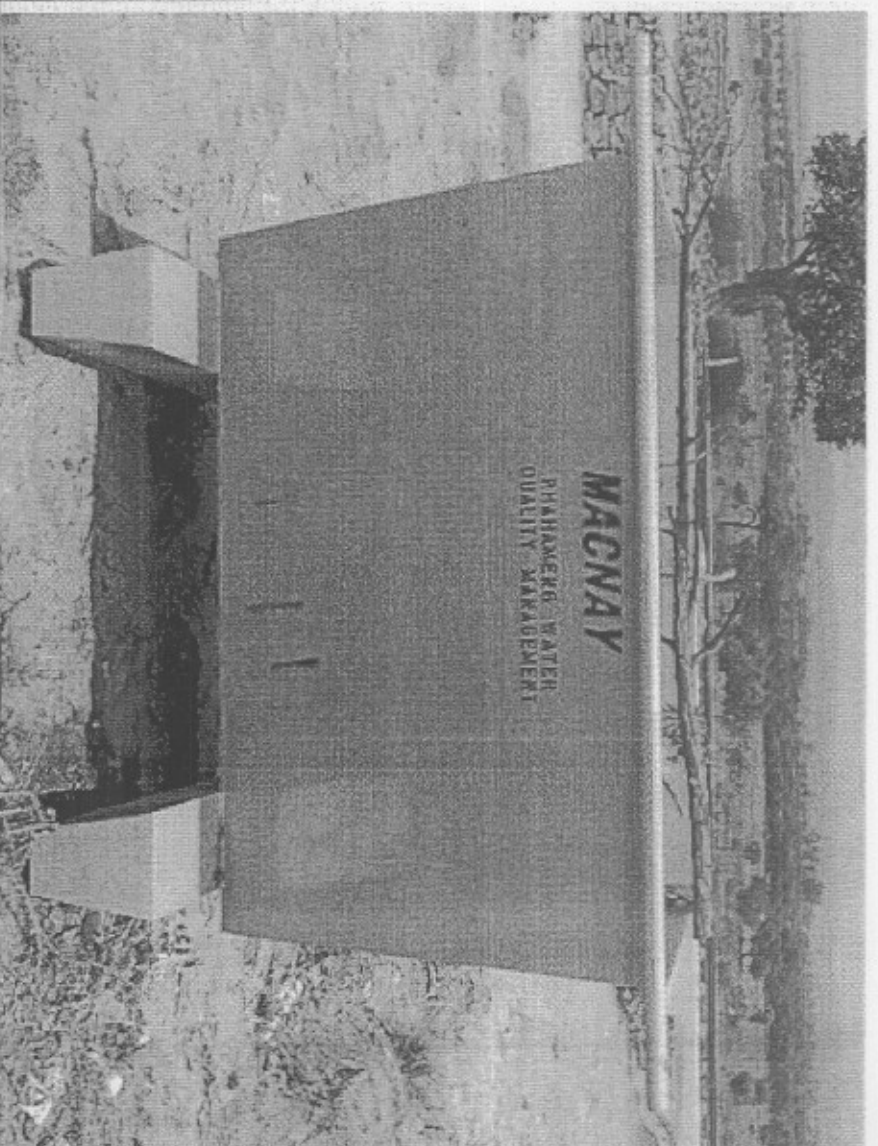




**Canals and storm-water drains can be kept clean**

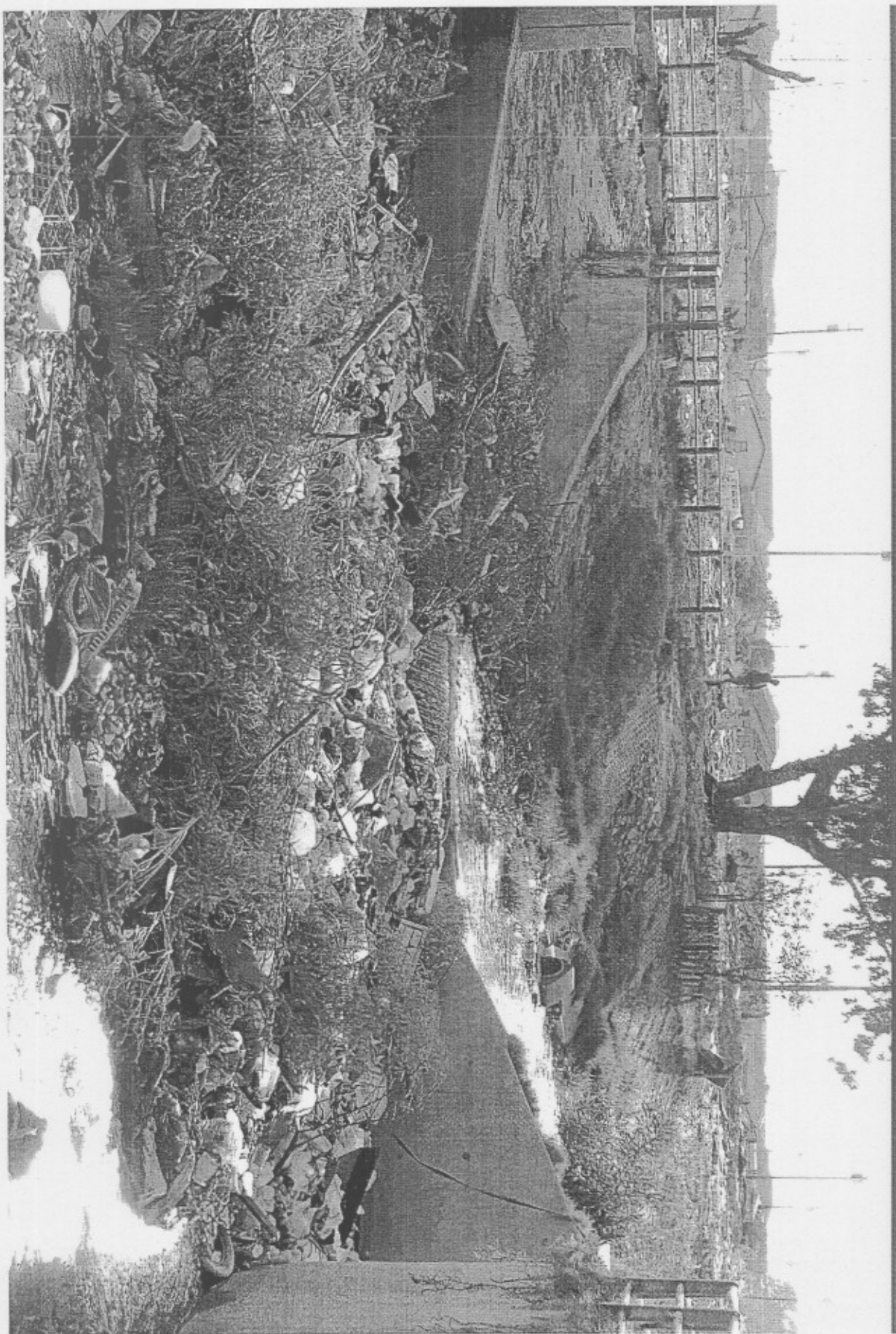


**More solutions.**





From this.....



To this .....

