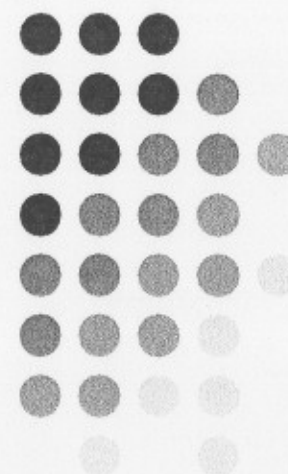


# CONDITIONAL GRANTS AND CAPITAL EXPENDITURE NORTH WEST

---

THIRD QUARTER ENDING  
31 DECEMBER 2007  
PRESENTATION DATE  
2008-02-07

---

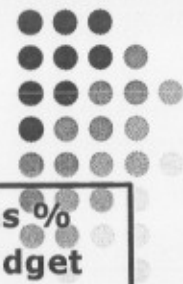




# INTRODUCTION

- Total amount received for all conditional grants for period under review is: R413,7m
- Total amount spent as at end 31 December 2007: R415,2m which is 65% of the overall allocation (R634,185m).
- An under-spending of 10% to date.
- The unspent amount is R219m which is 53% of the amount received and 34.5% of the total allocation.

# ANALYSIS PER CONDITIONAL GRANT AS AT 3<sup>RD</sup> QUARTER 07/08



Grant	Adjusted Allocation	Amount received	Amount spent (31 Dec 2007)	Exp as % of budget	Amount Spent (01 Feb 2008)	Exp as % Of budget
<b>Comprehensive HIV AND AIDS</b>	156,429	117,315	109,802	70%	127,440	81%
<b>National Tertiary Services</b>	81,409	61,056	51,566	63%	64,114	79%
<b>Health Professionals Training and Dev</b>	65,692	49,266	48,632	74%	50,952	78%
<b>Infrastructure</b>	39,572	36,200	34,999	88%	44,058	111%
<b>Hospital Revitalization</b>	209,166	132,723	154,791	74%	152,435	73%
<b>Forensic Pathology Services</b>	36,235	17,127	15,407	43%	16,823	46%
<b>Total</b>	<b>588,503</b>	<b>413,687</b>	<b>415,197</b>	<b>71%</b>	<b>455,822</b>	<b>77%</b>

## **PERFORMANCE ON CONDITIONAL GRANT**

### **HIV/AIDS**

- At 70.2%, the grant is below the target of 75% at the end of the year.
- Transfers from National Health were received in full for first, second and third quarters.

### **NATIONAL TERTIARY SERVICES**

- Transfers from National Health were received in full up to third quarter.
- Expenditure is at 63.3%

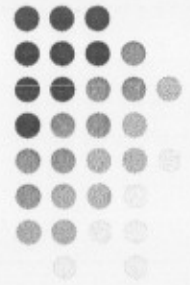
### **HEALTH PROF TRAINING AND DEV.**

- Transfers from National Health were received up to third quarter and the expenditure is at 74.03% .

### **INFRASTRUCTURE GRANT**

- The expenditure is 88% on an adjusted budget of R39,6 million, which is above the target of 75%.
-

# **PERFORMANCE ON CONDITIONAL GRANTS cont.**



## **HOSPITAL REVITALIZATION**

- Spent 74% of the budget.

## **FORENSIC PATHOLOGY SERVICES**

- Expenditure has dropped to 32.06% at the end of Dec as compared to 39.02% at 2<sup>nd</sup> quarter, due to roll-over of R13,4m.
- Transfers from National Health were received in full up to third quarter.
- Department has outlined plans for spending of the R13,4 m rollover before the end of the year.





## **MONITORING SYSTEMS**

- Weekly monitoring of expenditure and commitments.
- Submission of variance reports to the Executive Management Meeting every two weeks to identify blockages and remedial action.
- Fast tracking expenditure by interventions through task teams.
- Monthly and quarterly reports to Treasury and National Department of Health.