



water & sanitation

Department:
Water and Sanitation
REPUBLIC OF SOUTH AFRICA

Enquiries: George Nel
Telephone: 051 405 9000
Reference: 16/2/7/C241/D8

The Municipal Manager
Matlosana Local Municipality
PO Box 99
KLERKSDORP
2570

COMPLAINT: NON FUNCTIONAL WASTE WATER TREATMENT WORKS (WWTW) AT STILFONTEIN

A complaint regarding sewage spills at Stilfontein WWTW was received by this office in October 2014.

A site investigation was carried out on 11 December 2014 by the Compliance and Enforcement section of the DWS: Free State Regional Office.

The following was observed on the day of the inspection:

- Screens at the inlet are non functional.
- Grit removal not taking place.
- At the Aeration basins there are several motors not working.
- Clarifiers are non functional.
- Broken infrastructure and missing motors and pumps at the plant.
- Broken chlorination unit.
- The discharge from the plant is polluting the Koekemoerspruit and this is causing problems for downstream users due to poor water quality.

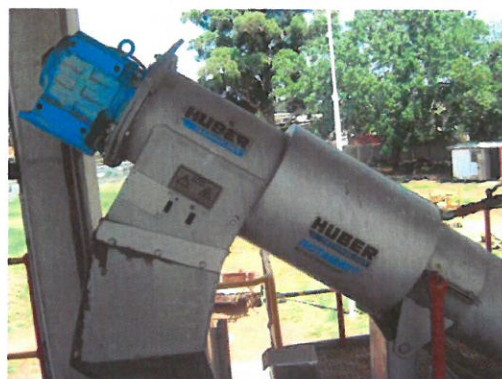


Figure 1 & 2 – Screens non functional



Figure 3 – Missing pumps



Figure 4 – Broken Infrastructure

Figure 3 shows a missing sludge pump.
Figure 4 shows broken infrastructure



Figure 5 & 6 – Aerators

Figure 5 & 6 shows several aerators not working.



Figure 7 – Broken motors



Figure 8 – Secondary Clarifier

Figure 7 & 8 shows more broken motors and non functional clarifier.

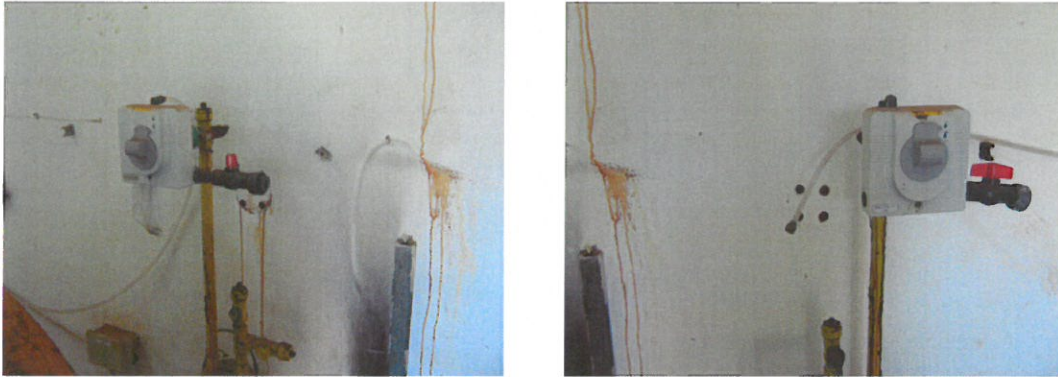


Figure 9 & 10 - Broken chlorination unit at the plant

CONCLUSION AND WAY FORWARD

The problems at the Stilfontein WWTW are unacceptable and must be addressed by the Municipality. The Department is requesting a completed action plan with achievable time frames and budgets to be submitted to this office on or before 30 January 2015. Waste Water Infrastructure at the WWTW is in need of immediate attention and the municipality needs to make this a priority.

The Department is making the municipality aware of Section 19 (1) of the National Water Act, Act No. 36 of 1998:

- 19 (1) An owner of land, a person in control of land or a person who occupies or uses the land on which –
- (a) any activity or process is or performed or undertaken; or
 - (b) any other situation exists.
- which causes, has caused or is likely to cause pollution of a water resource, must take all reasonable measures to prevent any such pollution of a water resource, must take all reasonable measures to prevent any such pollution from occurring, continuing or recurring.**
- (2) The measures referred to in subsection (1) may include measures to –
- (a) cease, modify or control any act or process causing the pollution;
 - (b) comply with any prescribed waste standard or management practice;
 - (c) contain or prevent the movement of pollutants;
 - (d) eliminate any source of the pollution;
 - (e) remedy the effects of the pollution; and
 - (f) remedy the effects of any disturbance to the beds and banks of a watercourse.

Please do not hesitate to contact this office for any enquiries on any of the given information.

Regards,


T Ntuli

PROVINCIAL HEAD: FREE STATE

Letter signed by: Mr W Grobler

Designation: Deputy Director: Water Regulation

8/1/15