



**K O U G A**

local municipality

Good Governance through Service Excellence

# **GREATER KABELJOUS CONSERVATION AREA**

**BRIEFING TO THE PORTFOLIO COMMITTEE ON FORESTRY,  
FISHERIES AND THE ENVIRONMENT**

**(12 MARCH 2024)**

# CONTENT

## Locality

## Papiesfontein

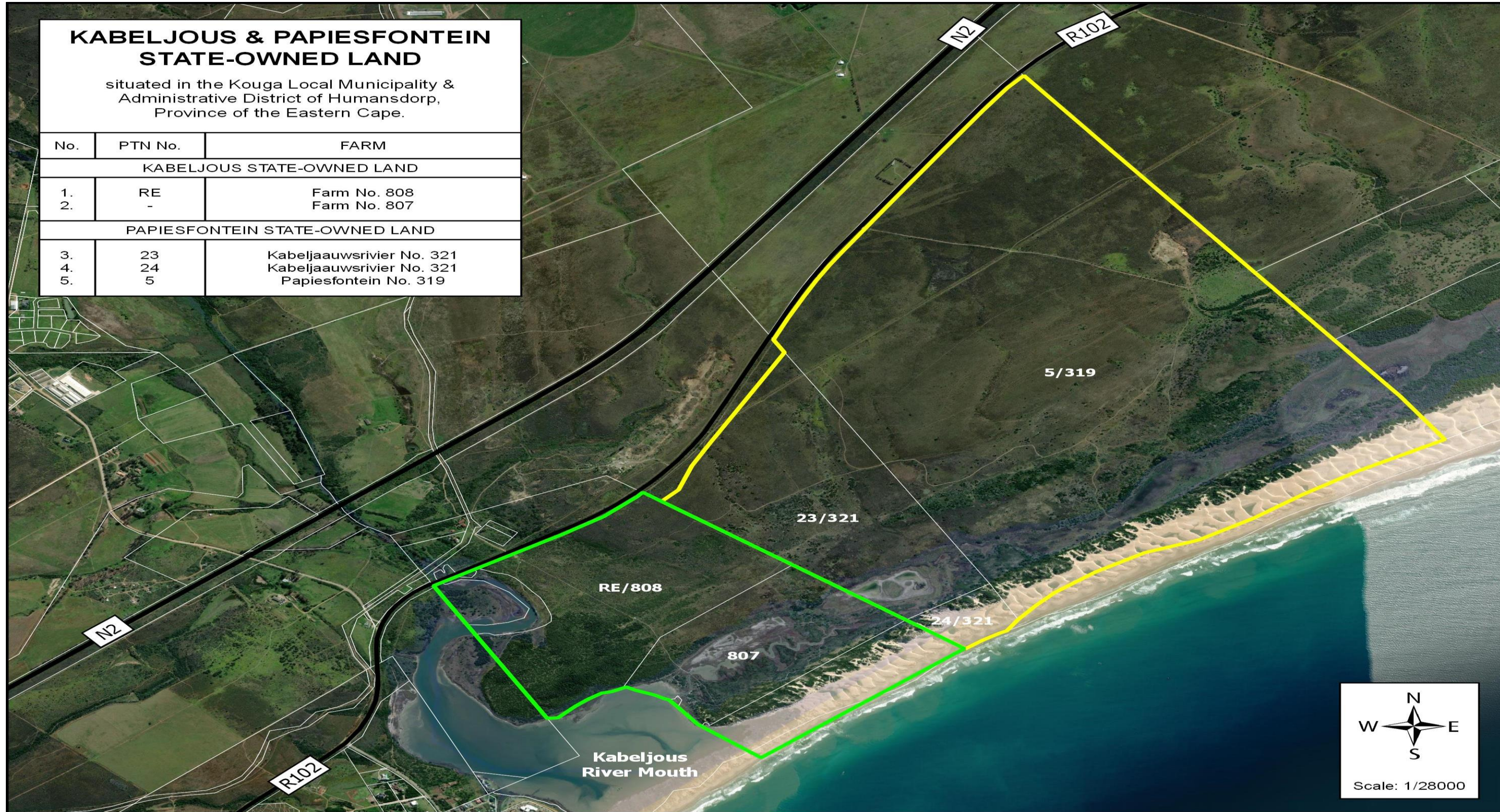
- The Land Use Plans
- The Protection Status

## Kabeljous Nature Reserve

- The Land Use Plans
- The Protection Status
- Consultation with interested and affected stakeholders

## Spatial Development Framework (SDF)

# LOCALITY



## LAND USE PLANS

This property comprises of three (3) land parcels and current ownership is registered to the Eastern Cape Provincial Department of Human Settlements.

The land consists of the following portions:

- Portion 5 of the Farm Papiessfontein No.319, Registration Division of Humansdorp, Eastern Cape Province, measuring in the extent of 429.1224 ha, held by Title Deed T13563/1987.
- Portion 23 of the Farm Kabeljaausrivier No.321, Registration Division of Humansdorp, Eastern Cape Province, measuring in the extend of 95.3082 ha, held by Title Deed T13563/1987.
- Portion 24 Farm Kabeljaausrivier No.321, Registration Division of Humansdorp, Eastern Cape Province, measuring in the extend of 3.4193 ha, held by Title Deed T13563/1987.

The current zoning of these portions is Agriculture Zone 1

The Kouga Municipality's Spatial Development Framework earmarks this area as a critical biodiversity area.

# PAPIESFONTEIN



## PROTECTION STATUS

Although this property bears exceptional conservation value, Papiessfontein state land does not currently enjoy any formal Protected Area status as per the provisions of the National Environmental Management: Protected Areas Act 57 of 2003.

The area contains critically important biodiversity and sensitive ecological landscape features that are of exceptional conservation value, including primary coastal sand dunes and a unique network of important wetlands and threatened vegetation types.

The securing and management of Papiessfontein State land as a Nature Reserve has been supported by the Sarah Baartman Regional Office for the Province of the Eastern Cape DEDEAT, in 2017, by the South African National Biodiversity Institute (SANBI) under the CREW Programme, in April 2022.

# PAPIESFONTEIN



## PROTECTION STATUS Cont.

This critical biodiverse area is currently under threat, more specifically in respect of Portion 5 of the Farm Papiessfontein No.319, Registration Division of Humansdorp.

In December 2022 it came to the attention of the Kouga Municipality that this area has been illegally invaded by a certain group of individuals. In January 2023, it came to the further attention of the Municipality that the illegal occupants commenced with the erection of illegal structures and has since been occupying same.

The Kouga Municipality has since instituted legal action in respect of the contravention of the National Building Regulations and Building Standards Act, and same is currently ongoing. It is believed that the Eastern Department of Human Settlements, as registered property owner, instituted legal proceedings for the eviction of the illegal occupants occupying this property.

# PAPIESFONTEIN



# KABELJOUS NATURE RESERVE



## LAND USE PLANS

The Nature Reserve comprises of two (2) land parcels and the current ownership is registered to the Eastern Cape Provincial Department of Public Works, and under the custodianship of Department of Economic Development and Environmental Affairs and Tourism (DEDEAT).

The land consists of the following portions:

- Farm No. 807, Registration Division of Humansdorp, Eastern Cape Province, measuring in the extent of 48.1197ha, and held under Title Deed T39870/1986.
- Remainder of Farm No.808, Registration Division of Humansdorp, Eastern Cape Province, measuring in the extent of 104.6016 ha, and held under Title Deed T39870/1986.

The Kouga Municipality's Spatial Development Framework earmarks this area as a critical biodiversity area.



# KABELJOUS NATURE RESERVE



## PROTECTION STATUS

This area is regarded as a *de facto* conservation area, but the land was never formally declared as a Protected Area as per the provisions of the National Environmental Management: Protected Areas Act 57 of 2003, and therefor is does not currently enjoy the long-term conservation / protection security.

2 x land parcels – under the custodianship of the provincial Dept of Economic Development, Environmental Affairs and Tourism ('DEDEAT') for many years.

Widely recognised as a Nature Reserve for many years, although it is not yet formally declared and protected i.t.o. NEMPAA.

Currently managed as a Nature Reserve under the guidance of the provincial conservation authority – DEDEAT.

# Consultation with interested and affected stakeholders



The Municipality has had many consultations with interested & affected parties / stakeholder regarding this matter over a number of years, such as:

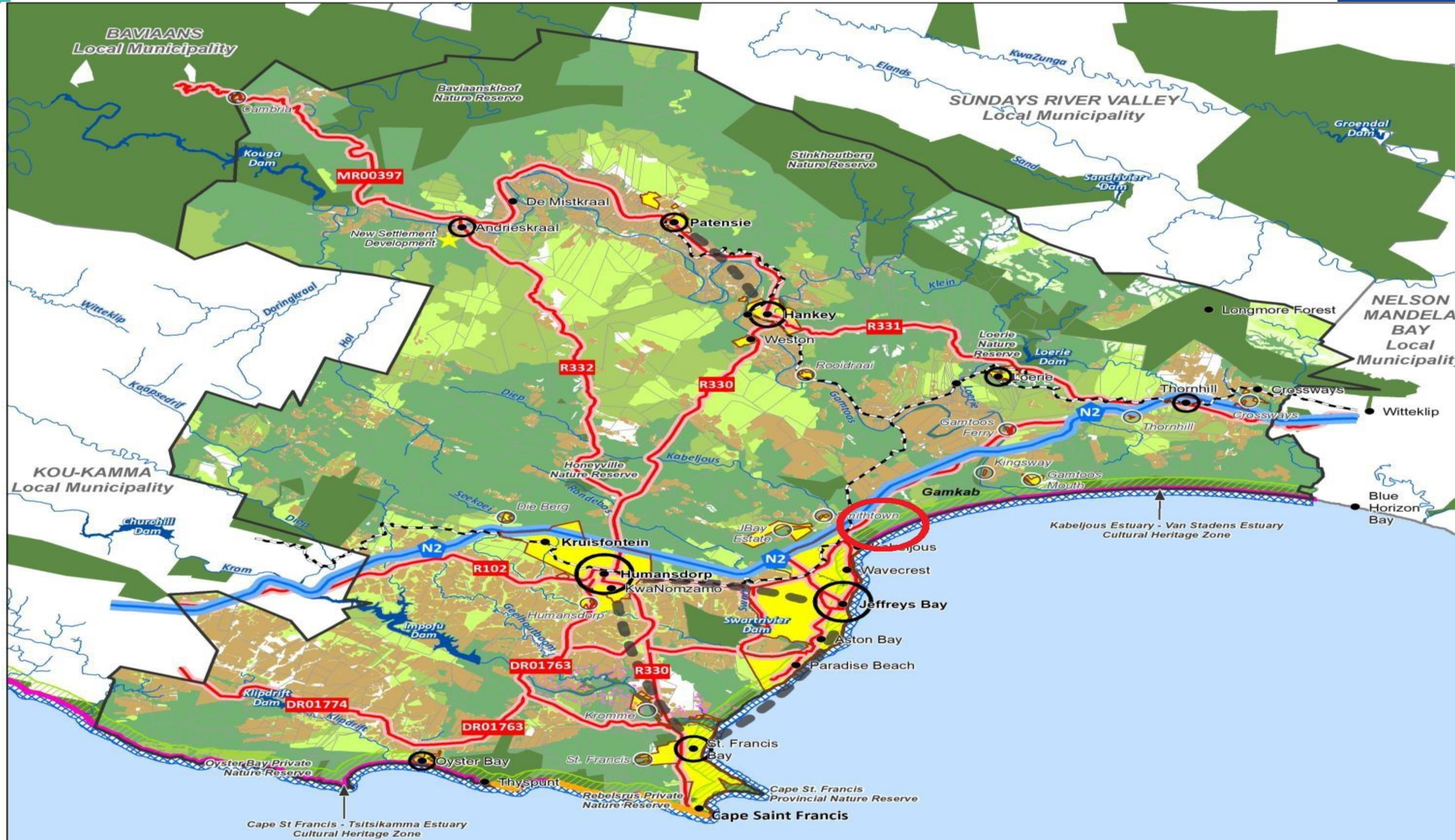
Key government stakeholders:

- Provincial Dept of Human Settlements (DHS).
- Provincial Dept of Economic Development, Environmental Affairs and Tourism (DEDEAT).
- Eastern Cape Parks & Tourism Agency (ECPTA).

Other key stakeholders:

- Garden Route Biosphere Reserve.
- Kabeljous Reserve Action Group (KRAG).
- Greater Kromme Stewardship (GKS).
- Gamtkwa Khoisan Council.
- House of Klaas and Dawid Stuurman.
- Greater Kabeljous Partnership (GKP).
- Public in general – consultative processes during the development of the municipal SDF, Coastal Management Programme, etc.

# SPATIAL DEVELOPMENT FRAMEWORK



**Kouga Desired Spatial Form**

**Legend**

- Kouga
- Urban Edge (2019)
- Primary Node
- Secondary Node
- Rural Node
- Rural Settlement Area
- Towns
- New Settlement
- Stromatolites

**Transportation Network & Corridors**

- N2 Corridor
- District Access
- Settlement Links
- Railway Line
- Dams
- Drainage
- Settlements
- Kromme River Dev. Setback
- Agriculture

**Coastal Management**

- Cultural Heritage Zones
- SBDM 1km Landwards
- SBDM 500m Seawards

**Category**

- Protected Areas
- CBA 1
- CBA 2
- ESA 1
- ESA 2

0 2.5 5 10  
Kilometers

# SPATIAL DEVELOPMENT FRAMEWORK

## **Spatial Development Framework (SDF) of the Kouga Local Municipality:**

- Earmarks the Kabeljous and Papiessfontein land for conservation as a Protected Area (*Kouga SDF, 2021, pg. 68*).

## **Eastern Cape Biodiversity Conservation Plan:**

- Critical Biodiversity Area 1 (CBA 1).
- Land use directive – Areas of high biodiversity value that should be maintained in a natural state, with no further loss of habitat (*Kouga SDF, 2021, pg. 142*).

## **Coastal Management Programme of the Sarah Baartman District Municipality :**

- Land use directive – Management of the coastal area between the Kabeljous and Gamtoos estuaries must be prioritised to ensure conservation of the Papiessfontein wetlands, coastal dunefields, and important archaeological sites (*Kouga SDF, 2021, pg. 144*).

## **Eastern Cape Protected Area Expansion Strategy:**

- Identifies the Kabeljous and Papiessfontein land as a “high spatial priority” for Protected Area Expansion.

## **National Protected Area Expansion Strategy:**

- Identifies the Kabeljous and Papiessfontein land as a “priority focus area” for Protected Area Expansion.

# THANK YOU • DANKIE • ENKOSI



042 200 2200



33 Da Gama Road, Jeffreys Bay



@kougamunicipality



@kougamunicipality



[www.kouga.gov.za](http://www.kouga.gov.za)



**K O U G A**  
local municipality

Good Governance through Service Excellence