



**PROJECT PLANS FOR THE 2023/24 ENERGY
INFRASTRUCTURE ALLOCATIONS INCLUDING THE
EMERGENCY FUNDING ALLOCATED TO ASSIST
MUNICIPALITIES**

Aug 2023

INDEX

1. Emergency Funding
2. Energy Infrastructure Allocation
3. Request for funding: Solar PV
4. SSEG Applications
5. Alternative Energy Generation



1. EMERGENCY FUNDING

1. Needed approx. R5m*
2. Grant funding received: R0.35m
3. Tender 15/2023: Montagu WTW for R1.086m;
 1. Own funding (R0.736m) used to top-up grant funding
 2. Service Provider appointed & site H/O Jul 2023

2. ENERGY INFRASTRUCTURE ALLOCATION

1. No funding allocated to Langeberg Municipality

2. Own funding utilized

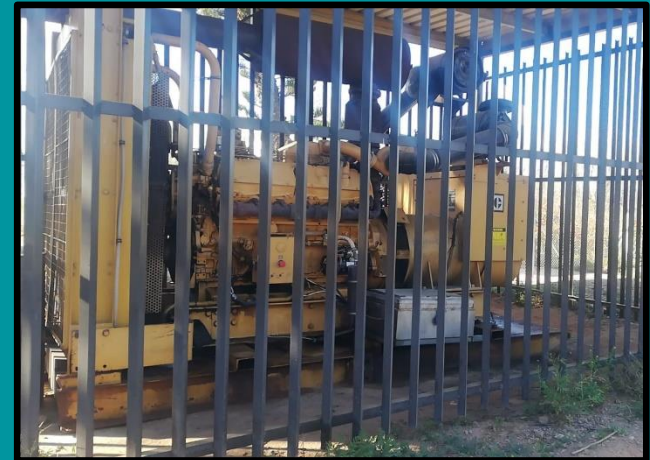
1. 2022/23: R2m [Ashton Head office, Ashton Traffic, Call Centre, Ashton Sewer Pump Station]
2. 2023/24: R8.957m (Budgeted for Water / Sewer; tender in process)
3. 2024/25: R9.458m (Budgeted for Water / Sewer)

3. Public Private partnerships (next slide)

PUBLIC / PRIVATE PARTNERSHIP

Tiger brands: 2 x 500kVA generators

Lactalis (Parmalat): 400kVA



3. REQUEST FOR FUNDING: SOLAR PV

1. Application to WC Government for co-funding
2. Running generators during load shedding
 1. High cost of Diesel
 2. Maintenance required on generators
 3. Environmental impact: CO₂ footprint
3. Proposed project phased over 3 FY's
 1. Administrative facilities (high-level est. R10.6m)
 2. Water works facilities
 3. Sewerage works facilities
4. Energy reliance in order of priority:
 1. Alternative energy (preferably renewable)
 2. Conventional (Eskom)
 3. Diesel generators



4. SSEG APPLICATIONS

1. Regulations & Application form on website
2. Approved feed-in tariff R0.87 / kWh
3. High volume of applications
 1. 383 Applications received totaling 10.18MVA
 2. 138 systems approved totaling 4.1MVA
4. Challenge with incomplete forms / incorrect information
5. Pressure on Administration to process & approve applications with limited human resources
6. Online Application investigated (together with SALGA)

5. ALTERNATIVE ENERGY GENERATION

1. Transactional Advisors: procurement of alternative energy
2. Other Municipality: TA tender = R23m
3. SALGA (and partners) assistance:
 1. Sustainable Energy Africa (SEA)
 2. Southern Africa Energy Program (SAEP)
 3. Advising / assistance on regulatory requirements and possible funding sources
4. Wheeling
 1. Wheeling policy and tariffs could be adopted from i.e. CoCT / George Municipality and implemented in LM
 2. New ERP system being implemented till Feb 2024, integration
5. Keeping an eye on WC Gov. Municipal Energy Resilience

THE END
THANK YOU

