



agriculture, land reform & rural development

Department:
Agriculture, Land Reform and Rural Development
REPUBLIC OF SOUTH AFRICA

Office of the ADDG: Agriculture, Production, Biosecurity and Natural Resources Management
Private Bag X 250, PRETORIA, 30 Hamilton Street, ARCADIA, 0002
Tel: +27 12 319 6530 Email: SerageD@Dalrrd.gov.za

BRIEFING TO THE SELECT COMMITTEE ON APPROPRIATIONS ON LANDCARE PROGRAMME GRANT EXPENDITURE FOURTH QUARTER (2021/2022 FY) AND FIRST QUARTER (2022/23 FY), SCHEDULED FOR 31 AUGUST 2022

1. INTRODUCTION

- 1.1 The Select Committee on Appropriation invited the Department of Agriculture, Land Reform and Rural Development to present LandCare programme grant expenditure for quarter four of (2021/2022 financial year) and quarter one of (2022/23 financial year). The Department appearance is scheduled for 31 August 2022. The Committee extended invitation to the identified Provinces Members of the Executive Councils (MECs) responsible for Agriculture, Land Reform and Rural Development.
- 1.2 The LandCare Programme is a community-based and government-supported approach to the sustainable use of agricultural natural resources. It is implemented as a concurrent function wherein the National Department is responsible for the financial administration and setting of the performance platform while Provinces are responsible for development and implementation of LandCare projects. The projects are funded through Division of Revenue Act (DORA) and all compliances have to be followed in terms of the DORA framework
- 1.3 The implementation of LandCare programme in the Department is derived from Conservation of Agricultural Resources Act, Act 43 of 1983 (CARA). The objective of CARA is to provide for the maintenance of the production potential of land and control over the utilization of natural resources of the Republic of South Africa in order to promote the conservation of soil, water sources and vegetation and for the combating of weeds and invader plants and for matter connected therewith
- 1.4 LandCare goal is to optimize productivity and enhance sustainable use of natural agricultural resources
- 1.5 The programme operates through six indivisible principles of:
 - Integrated Sustainable Natural Resource Management embedded within a holistic policy and strategic framework where the primary causes of natural resource decline are recognized and addressed.

- Fostering group or community based and led natural resource management within a participatory framework that includes all land users, both rural and urban, so that they take ownership of the process and the outcomes.
- The development of sustainable livelihoods for individuals, groups and communities utilizing empowerment strategies.
- Government, community and individual capacity building through targeted training, education and support mechanisms.
- The development of active and true partnerships between governments, LandCare groups and communities, non-government organizations and industry.
- The blending together of appropriate upper level policy processes with bottom up feedback mechanisms.

1.6 The responsibilities of the National Department are as follows:

- Host national assessment panel (NAP);
- Provide the guidelines and criteria for the development and approval of business plans;
- Monitor implementation of the programme i.e. outputs and targets in line with grant framework;
- Submit quarterly performance reports to relevant stakeholders and
- Submit evaluation reports to the National Treasury and any other relevant stakeholders

1.7 The responsibilities of the Provincial Department in relation to implementation:

- Hold provincial assessment panel (PAP);
- Ensure adequate level of capacity exists in the Province to implement the LandCare projects;
- Implement the projects according to the approved business plans;
- Submit financial reports and quarterly non-financial reports;
- Monitor project implementation and evaluate the impacts of projects in achieving LandCare goals and
- Promote best practises

2. DISCUSSION

2.1 PROVINCIAL COMPLIANCE FOR Q4 (of 2021/22) AND Q1 (of 2022/23)

- DALRRD had an annual grants budget of R83,337,000.00 for all Provinces and transferred R80, 578, 000.00. Gauteng quarter four allocation was withheld due to unsatisfactory financial performance. Overall expenditure of the programme was R74,581,168.00.
- DALRRD engaged Gauteng to comply with 2022/23 LandCare prescripts which is yet to be finalised.

2.2 PROVINCIAL FINANCIAL PERFORMANCE FOR Q4 2021/22 (GP, LP,NC & NW)

Provinces	DORA Allocation	Amount Transferred	Total Spend	% Spent v/s DORA Allocation
GP	R 5,016,000	R 2,257,000	R 2,249,643	44.85
LP	R 13,016,000	R 13,016,000	R 8,540,958	65.62
NC	R 7,697,000	R 7,697,000	R 6,738,600	87.55
NW	R 8,782,000	R 8,782,000	R 8,550,214	97.36
TOTAL	R 34,511,000	R 31,752,000	R 26,079,414	75.57

2.3 PROVINCIAL FINANCIAL PERFORMANCE FOR Q1 2022/23 (GP, LP,NC & NW)

Provinces	DORA Allocation	Amount Transferred	Total Spend	% Spent v/s DORA Allocation
GP	R 5,219,000	R 0	R 0	0
LP	R 13,303,000	R 5,986,000	R 1,267,000	9.52 (21.16)
NC	R 7,825,000	R3,522.000	R 0	0
NW	R 8,953,000	R 4,029,000	R 0	0
TOTAL	R 35,300,000	R 13,537,000	R 1,267,000	3.59 (12.65)

2.4 PROVINCIAL PERFORMANCE OUTPUTS

2.4.1 Q4 2021/22 PROVINCIAL PERFORMANCE OUTPUTS

KPA	Objective		GP	LP	NC	NW	TOTAL
Soil protection	Number of gabions constructed	Ann Target	0	0	5	0	5
		Q4 target	0	0	0	0	0
		Q4 Actual	0	0	0	0	0
	Ha of cultivated land rehabilitated and or protected	Ann Target	0	0	800	0	800
		Q4 target	0	0	800	0	800
		Q4 Actual	0	0	800	0	800
	Km of waterways /contours constructed	Ann Target	0	5	0	0	5
		Q4 target	0	0	0	0	0
		Q4 Actual	0	0	0	0	0
Rangeland Management	Ha of natural rangeland rehabilitated or protected	Ann Target	0	0	0	0	0
		Q4 target	0	0	0	0	0
		Q4 Actual	0	0	0	0	0
	Ha of Land where bush encroachment is controlled	Ann Target	0	0	0	3000	3000
		Q4 target	0	0	0	998	998
		Q4 Actual	0	0	0	886	886
	km of firebelts	Ann Target	0	0	0	0	0
		Q4 target	0	0	0	0	0
		Q4 Actual	0	0	0	0	0

KPA	Objective		GP	LP	NC	NW	TOTAL
Conservation of water resources	Ha of wetlands protected	Ann Target	0	0	0	0	0
		Q4 target	0	0	0	0	0
		Q4 Actual	0	0	0	0	0
	Number of water sources developed or protected against over-utilization	Ann Target	0	6	0	0	6
		Q4 target	0	0	0	0	0
		Q4 Actual	0	4	0	0	4
Control of weeds and invader plants	Ha of land where weeds and invader plants are under control	Ann Target	32	391	2200	0	2623
		Q4 target	0	0	4500	0	4500
		Q4 Actual	0	99	4759	0	4858
Junior LandCare	Number of youths successfully attending organized Junior LandCare initiatives	Ann Target	100	0	0	0	100
		Q4 target	0	0	0	0	0
		Q4 Actual	0	0	0	0	0
	Number of household and school food gardens established through Junior LandCare	Ann Target	0	0	0	0	0
		Q4 target	0	0	0	0	0
		Q4 Actual	0	0	0	0	0

KPA	Objective		GP	LP	NC	NW	TOTAL
LandCare Awareness	Number of awareness campaigns conducted	Ann Target	25	37	3	0	65
		Q4 target	0	2	0	0	2
		Q4 Actual	0	28	0	0	28
	To increase the number of people more aware of sustainable use of natural resources	Ann Target	125	1540	200	0	1865
		Q4 target	0	433	80	0	513
		Q4 Actual	0	1191	80	0	1271
LandCare capacity building and partnerships	Number of capacity building exercises conducted	Ann Target	0	3	4	0	7
		Q4 target	0	0	1	0	1
		Q4 Actual	0	18	0	0	18
	Number of people with improved capacity and skill levels benefiting from capacity building initiatives	Ann Target	125	712	0	0	837
		Q4 target	0	40	0	0	40
		Q4 Actual	0	525	0	0	525
	Number of formal and sustained partnerships with key stakeholders	Ann Target	0	0	0	0	0
		Q4 target	0	0	0	0	0
		Q4 Actual	0	0	0	0	0
	Number of Land Care committee established	Ann Target	0	12	0	0	12
		Q4 target	0	6	0	0	6
		Q4 Actual	0	0	0	0	0

KPA	Objective		GP	LP	NC	NW	TOTAL
Kilometres of fences erected	Kilometres of fence erected in the grazing and arable land	Ann Target	0	44	1	34	79
		Q4 target	0	0	0	12	12
		Q4 Actual	0	33	0	14	47
	Kilometres of fences erected for protection of wetlands	Ann Target	0	0	0	0	0
		Q4 target	0	0	0	0	0
		Q4 Actual	0	0	0	0	0
Conservation Agriculture	Ha of land under the system of Conservation Agriculture	Ann Target	53	589	120	100	862
		Q4 target	0	533	0	0	533
		Q4 Actual	0	415	0	0	415
	Number of Information days conducted to promote Conservation Agriculture	Ann Target	0	0	0	9	9
		Q4 target	0	0	1	3	4
		Q4 Actual	0	0	1	0	1
	Number of farmers adopting conservation agriculture system	Ann Target	0	300	0	50	350
		Q4 target	0	50	0	10	60
		Q4 Actual	0	369	0	36	405
	Number of people with improved capacity and skill levels benefiting from capacity building initiatives.	Ann Target	25	0	0	0	25
		Q4 target	0	0	30	0	30
		Q4 Actual	0	0	30	0	30

2.4.2 Q1 2021/22 PROVINCIAL PERFORMANCE OUTPUTS

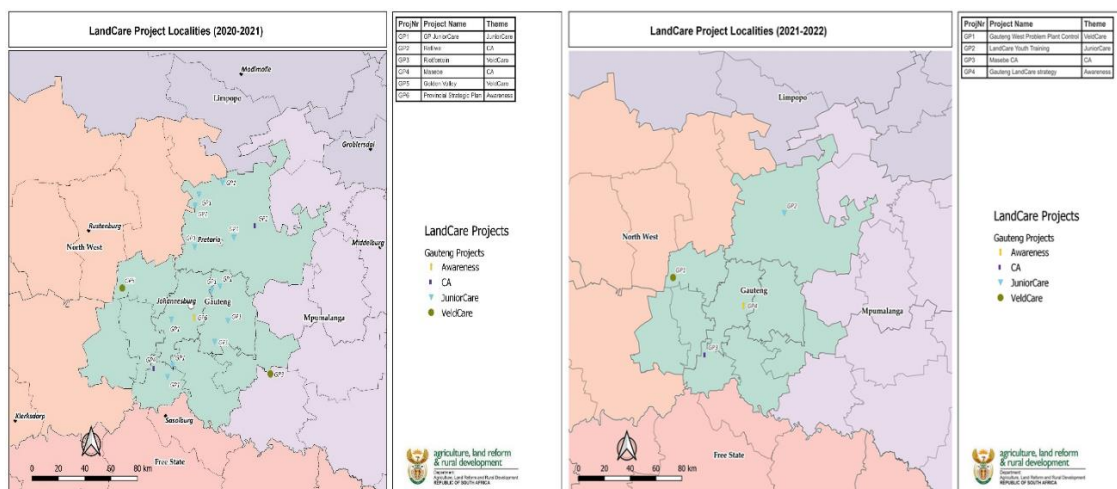
KPA	Objective		GP	LP	NC	NW	TOTAL
Soil protection	Number of gabions constructed	Q1 target	0	0	0	0	0
		Q1 Actual	0	0	0	0	0
	Ha of cultivated land rehabilitated and or protected	Q1 target	0	0	0	0	0
		Q1 Actual	0	0	0	0	0
	Km of waterways /contours constructed	Q1 target	0	0	0	0	0
		Q1 Actual	0	0	0	0	0
Rangeland Management	Ha of natural rangeland rehabilitated or protected	Q1 target	0	0	0	0	0
		Q1 Actual	0	0	0	0	0
	Ha of Land where bush encroachment is controlled	Q1 target	0	0	0	0	0
		Q1 Actual	0	0	0	0	0
	km of firebelts	Q1 target	0	0	0	0	0
		Q1 Actual	0	0	0	0	0

KPA	Objective		GP	LP	NC	NW	TOTAL
Conservation of water resources	Ha of wetlands protected	Q1 target	0	0	0	0	0
		Q1 Actual	0	0	0	0	0
	Number of water sources developed or protected against over-utilization	Q1 target	0	0	0	0	0
		Q1 Actual	0	0	0	0	4
Control of weeds and invader plants	Ha of land where weeds and invader plants are under control	Q1 target	0	0	0	0	0
		Q1 Actual	0	0	0	0	0
Junior LandCare	Number of youths successfully attending organized Junior LandCare initiatives	Q1 target	0	0	0	0	0
		Q1 Actual	0	0	0	0	0
	Number of household and school food gardens established through Junior LandCare	Q1 target	0	0	0	0	0
		Q1 Actual	0	0	0	0	0

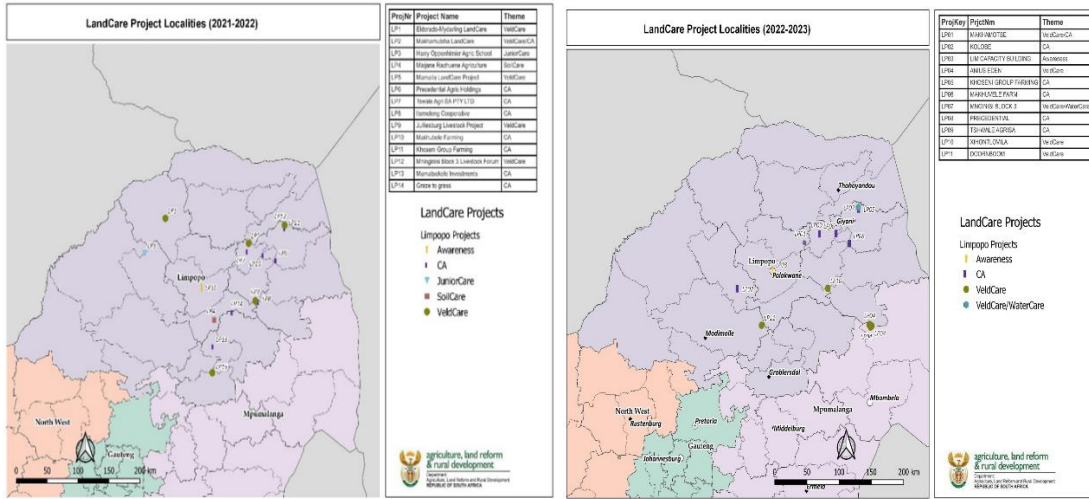
KPA	Objective		GP	LP	NC	NW	TOTAL
LandCare Awareness	Number of awareness campaigns conducted	Q1 target	0	0	0	0	0
		Q1 Actual	0	0	0	0	0
	To increase the number of people more aware of sustainable use of natural resources	Q1 target	0	50	0	0	50
		Q1 Actual	0	50	0	0	50
LandCare capacity building and partnerships	Number of capacity building exercises conducted	Q1 target	0	0	0	0	0
		Q1 Actual	0	0	0	0	0
	Number of people with improved capacity and skill levels benefiting from capacity building initiatives	Q1 target	0	0	0	0	0
		Q1 Actual	0	0	0	0	0
	Number of formal and sustained partnerships with key stakeholders	Q1 target	0	0	0	0	0
		Q1 Actual	0	0	0	0	0
	Number of Land Care committee established	Q1 target	0	1	0	0	1
		Q1 Actual	0	1	0	0	1

KPA	Objective		GP	LP	NC	NW	TOTAL
Kilometers of fences erected	Kilometers of fence erected in the grazing and arable land	Q1 target	0	0	0	0	0
		Q1 Actual	0	0	0	0	0
	Kilometers of fences erected for protection of wetlands	Q1 target	0	0	0	0	0
		Q1 Actual	0	0	0	0	0
Conservation Agriculture	Ha of land under the system of Conservation Agriculture	Q1 target	0	0	0	0	0
		Q1 Actual	0	0	0	0	0
	Number of Information days conducted to promote Conservation Agriculture	Q1 target	0	0	0	0	0
		Q1 Actual	0	0	0	0	0
	Number of farmers adopting conservation agriculture system	Q1 target	0	0	0	0	0
		Q1 Actual	0	0	0	0	0
	Number of people with improved capacity and skill levels benefiting from capacity building initiatives.	Q1 target	0	0	0	0	0
		Q1 Actual	0	0	0	0	0

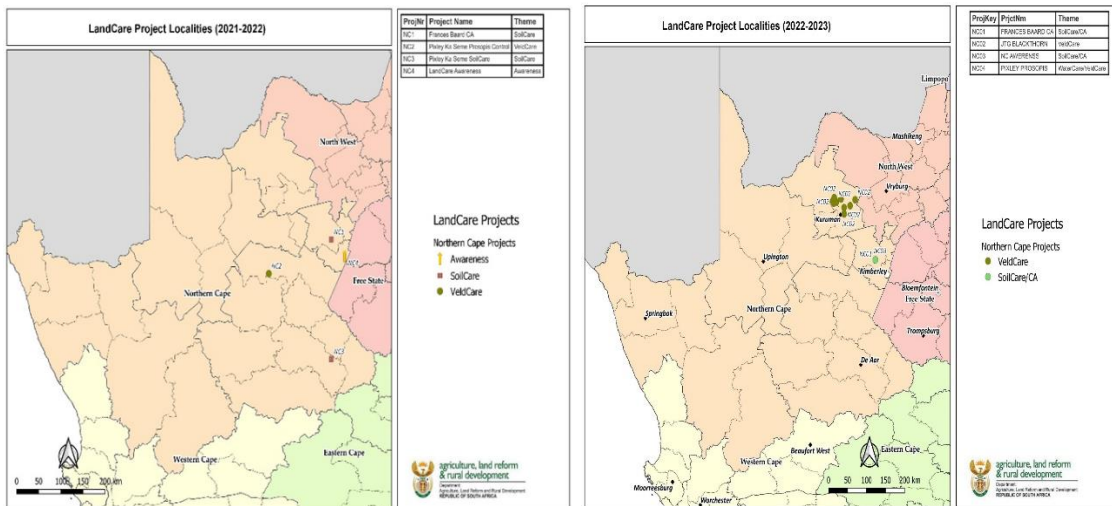
2.5 PROJECT LOCALITY A: GAUTENG



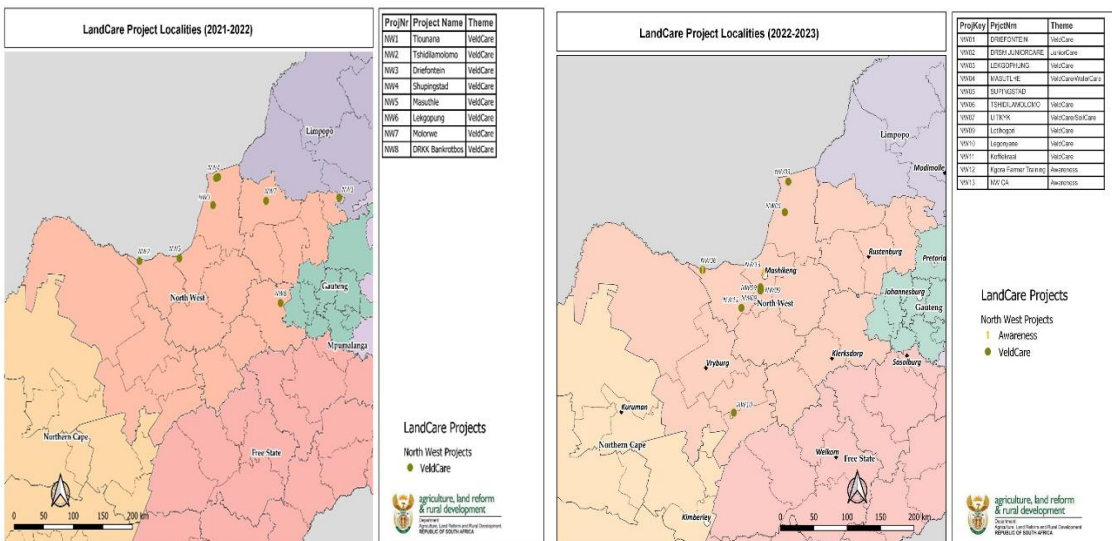
B: LIMPOPO



C: NORTHERN CAPE



D: NORTH WEST



3. CONCLUSION

The Select Committee on Appropriations is hereby asked to receive, endorse this report and make further guidance regarding implementation of the LandCare Programme should the Committee deems it necessary while noting the following:

- That a National business plan comprising of seven provinces (except Gauteng & Mpumalanga) was approved on 08 June 2022. Business plans for GP and MP were not received during National Assessment Panel.
- That the overall LandCare Annual Budget for 2022/23 is R 84,920,000.00 of which DALRRD has already transferred a total of R 25, 757 ,550.00 to Free State, Limpopo, Kwa-Zulu Natal, Northern Cape, North West and Western Cape with reported expenditure of R5,305, 756.00
- That the LandCare programme responds to a number of South Africa's United Nation Convention to Combat Desertification , United Nation Framework Convention for Climate Change and related Sustainable Development Goal's commitments in particular SDG 2.4 on putting half of agricultural land under sustainable practices and SDG 15.3 regarding avoidance, minimisation and reversal of land degradation.
- That there is a need to consider each Province and communities peculiar context when providing support since each Province has its unique needs, which may require more funding than the LandCare programme can provide. These varied needs range from Conservation Agriculture mechanization to the need to cultivate different adaptable fodder species.
- Request Committee to note and consider the Provincial expenditure and performance outputs and make further guidance if necessary.



MR D SERAGE

ADDG: AGRICULTURE, PRODUCTION, BIOSECURITY AND NATURAL
RESOURCES MANAGEMENT:

DEPARTMENT OF RURAL DEVELOPMENT AND LAND REFORM

DATE: 20220825