

# Umfoloji Sugar Planters Ltd

As registered under the Companies Act : 2008/012478/06



**Presentation to Portfolio Committee on Environment,  
Forestry and Fishing : 8 February 2022**

Panel of Experts 15 November 2021 detailed presentations;

- Umfolozi drainage and flood protection (effect on back-flooding)
- Socio economic impact of back flooding damages
- Umfolozi Sugar Mill sustainability

# Umfolozi sugar farming community

## Umfolozi Sugar Planters Ltd (UCOSP)

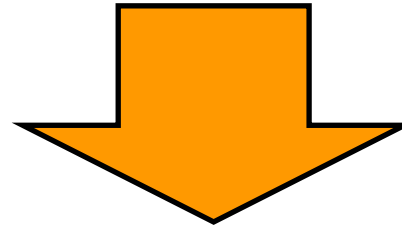
63x growers including 9x Land Reform growers (20% shareholding) collectively own approx. 9,000ha private farmland on Umfolozi flats;

Farm employment : 1,500 staff

United and self-sufficient

Existed as St Lucia Estuary neighbors for over 100 years.

Water Use Certificate to manage the Umfolozi River over the flood plain



1,200ha current back flooding damage (15% total area)  
= R300m farm value unproductive  
= R80m pa crop loss  
= R60m replanting cost

Back flooding area is increasing ?

## Umfolozi Sugar Mill (Pty) Ltd

(1.3m ton cane supply = R1.4bn local economy)

30% UCOSP (55% cane supply)

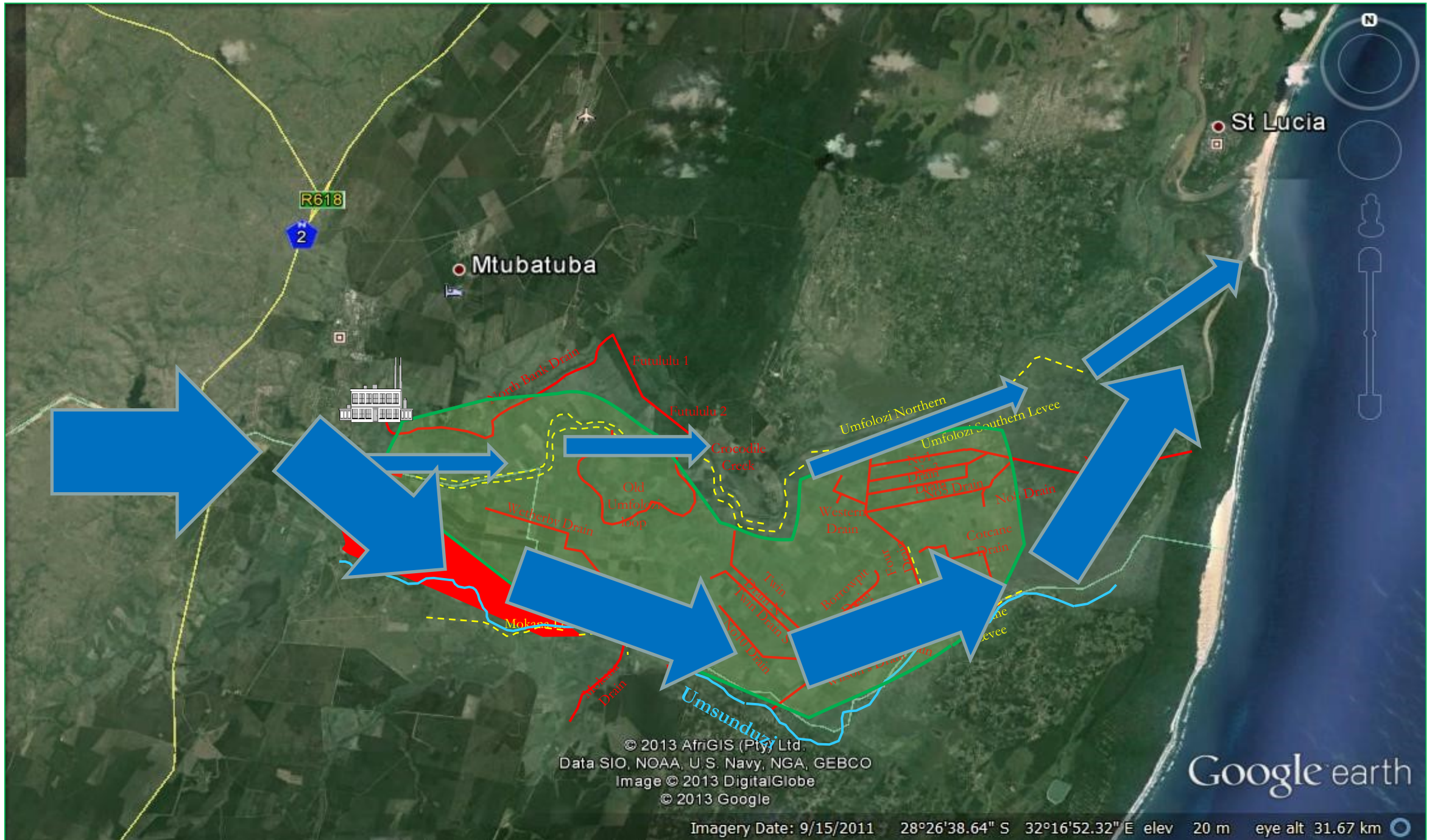
30% UVS

30% Senekal

10% Small scale growers (approx. 2,500 active growers)

300 staff

# Umfolozi farmland - back flooding



# Umfolozi farmland - back flooding

Approx 9,000ha sugarcane farmland  
600ha = 7% of Umfolozi flats farming permanently damaged  
Up to 1,800ha = 20% back-flooding crop damage during flooding (with no exit to the sea)

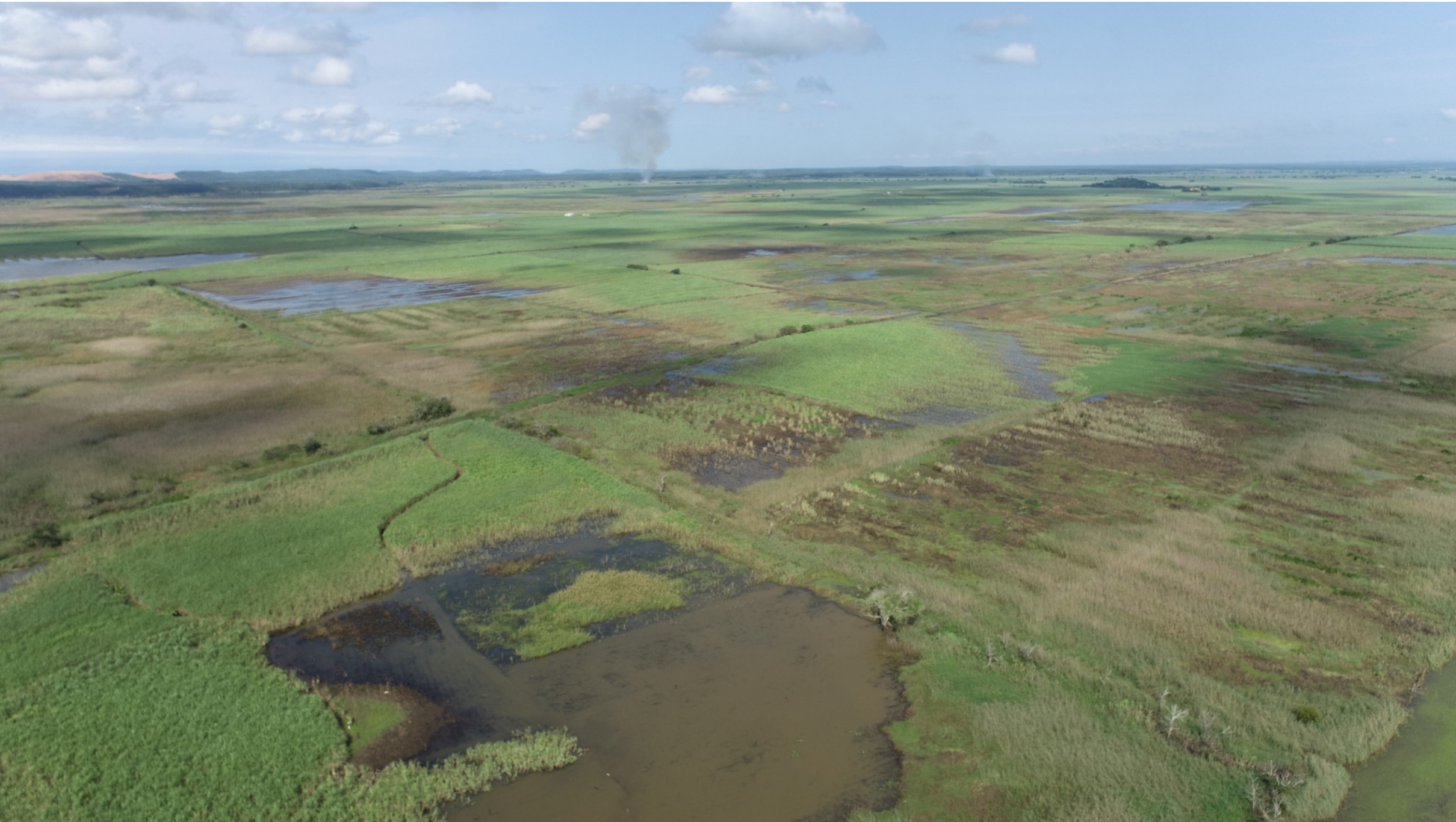
Approx 600ha community crop damage



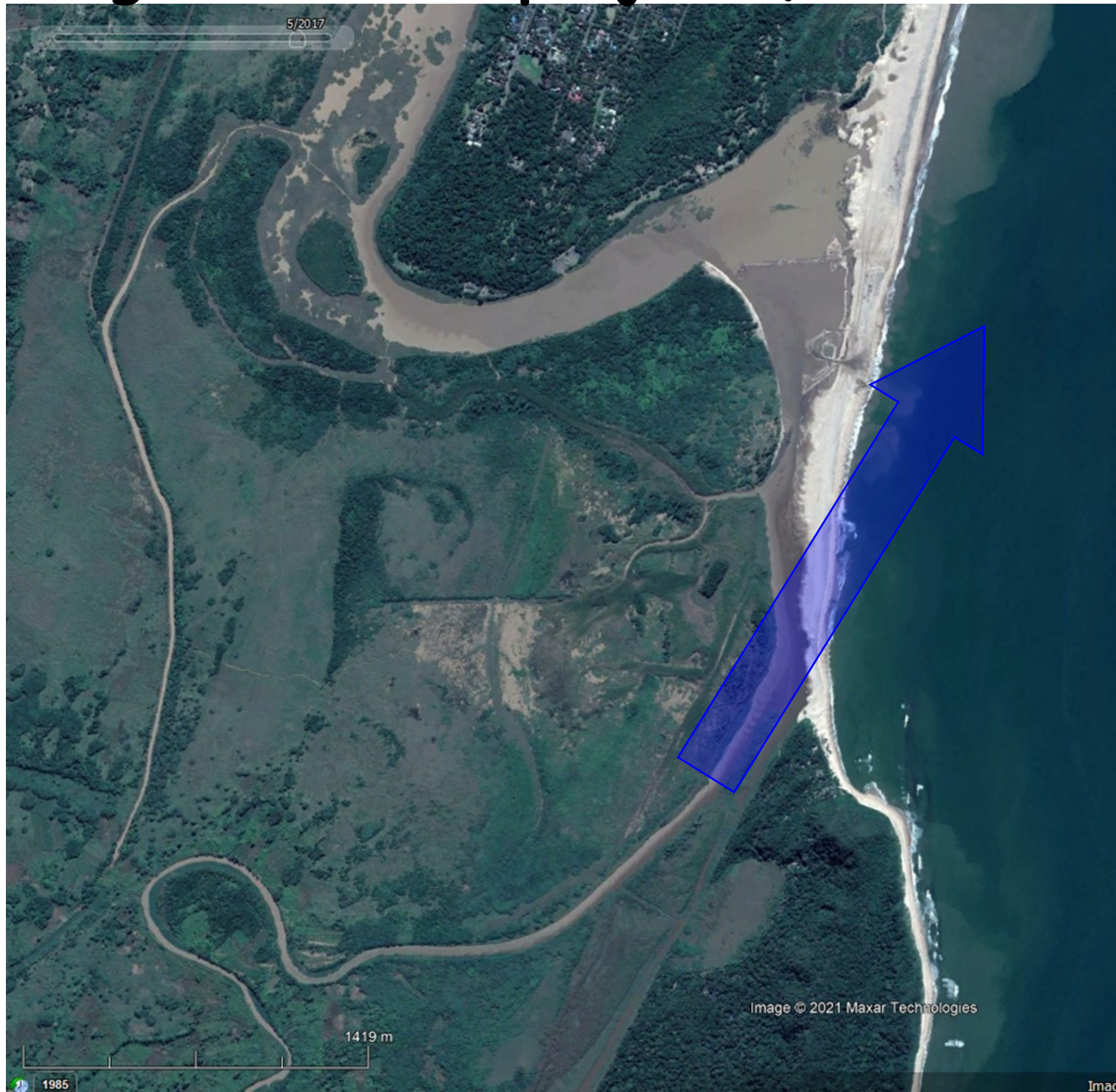
# Umfolozi farmland - back flooding



# Umfolozi farmland - **back flooding**

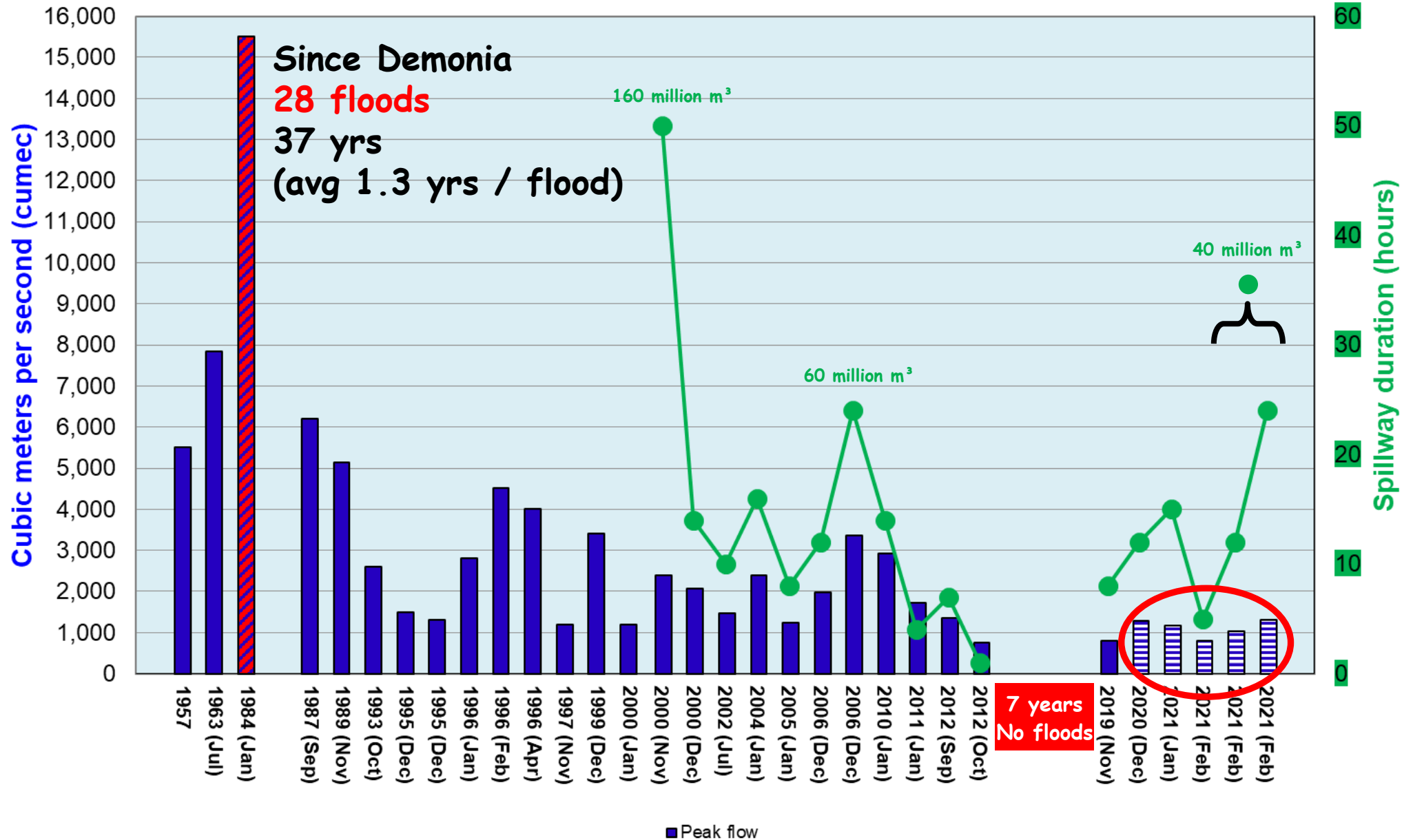


# iSimangaliso - GEF project (2012 - 2018)



# iSimangaliso - GEF project

## Umfolzi River flood events since spillway establishment 1985





# iSimangaliso - GEF project



# Umsunduzi River blockage



# Umfolozi farmland - back flooding

iSimangaliso task team feedback February 2021 (after the opening of the mouth)

There are no signs of dying reeds as yet. There is a water line on the vegetation showing the drop in water level up the Narrows. Reeds will only die off after a few weeks when the mean salinity rises above 20 ppt for an extended period.



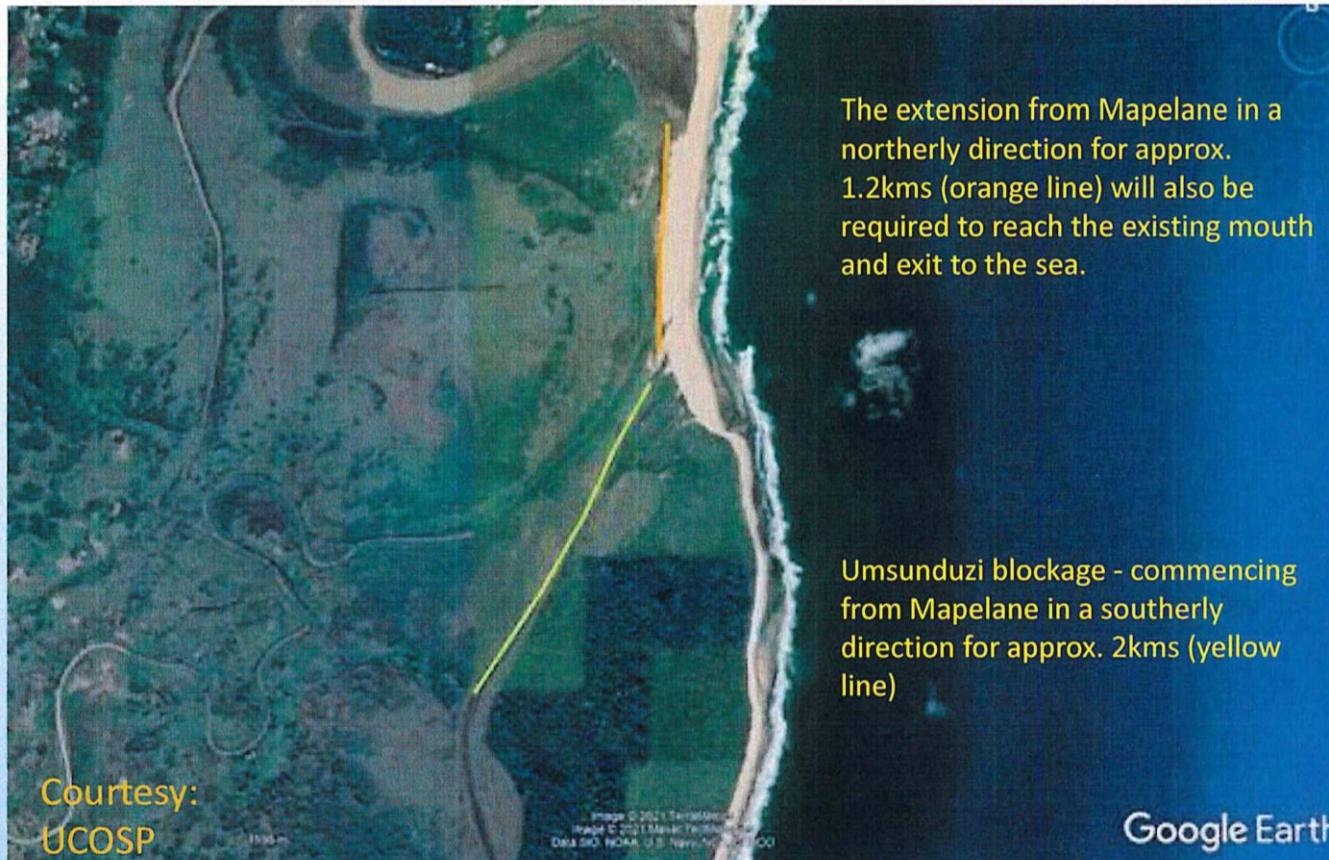
Mfolozi River still choked with vegetation – post breach

# Umfoloji farmland - back flooding

iSimangaliso task team feedback March 2021 (after the opening of the mouth)

SLSTAG (St Lucia Scientific Technical Advisory Group) did not approve a proposal by UCOSP to unblock the Msunduzi.

## Msunduzi and uMfolozi Blockage

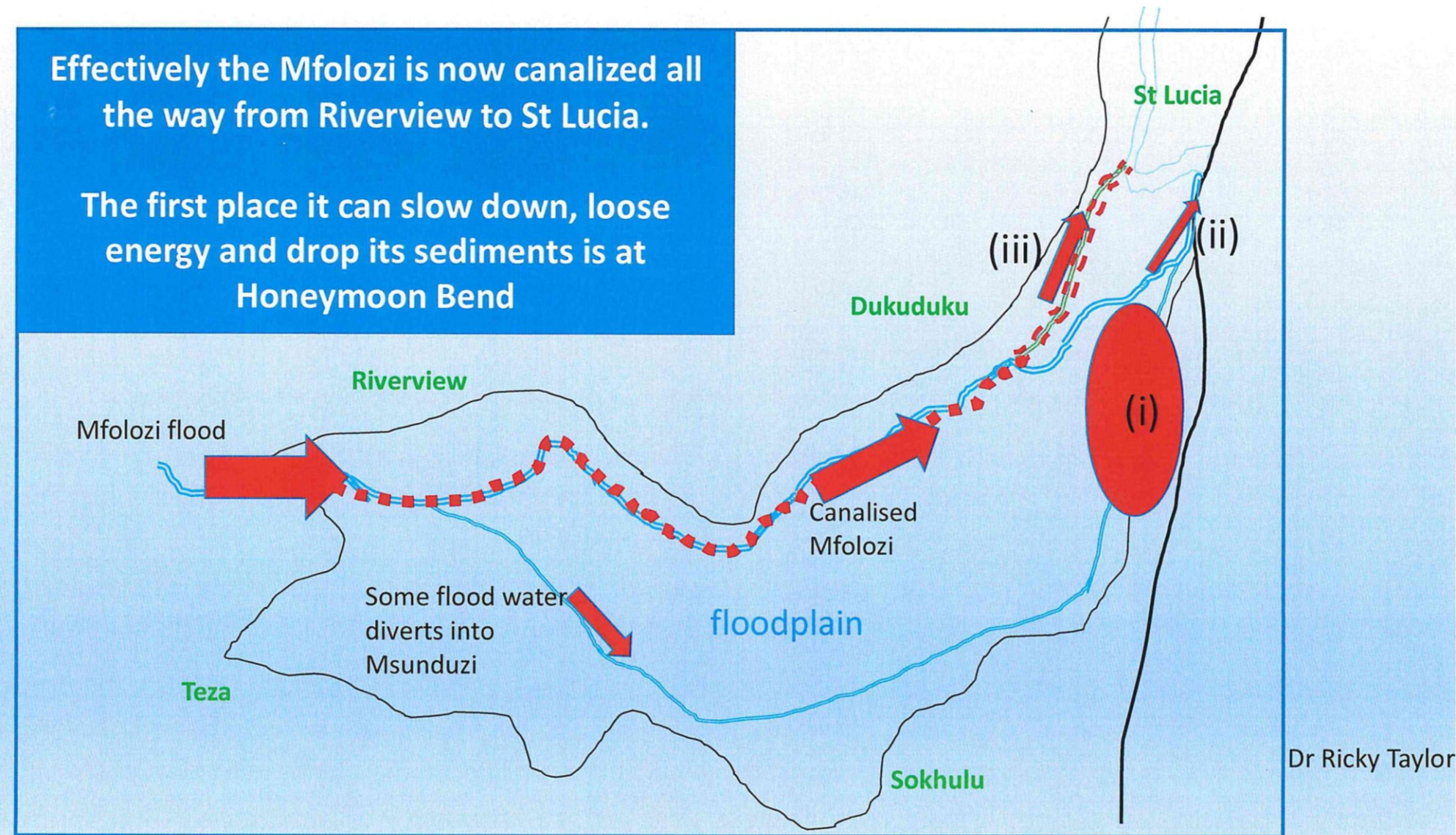


- Very informative presentation by UCOSP to the SLSTAG
- The group expressed concern that this is a major undertaking, possibly larger in scale than the GEF restoration in the bay area and outside of the scope of an immediate intervention that can be completed before 31 March 2021.
- The proposal will result in a canal being dredged to contain water and sediment that otherwise, during a flood, would accumulate in the low-lying Msunduzi portion of the swamp and result in the back-flooding described by UCOSP.
- This action will alter a large portion of a natural wetland within the World Heritage Site action and will affect the natural functioning of the lower part of the Mfolozi Floodplain.

# Umfolozi farmland - back flooding

iSimangaliso task team feedback March 2021 (after the opening of the mouth)

SLSTAG (St Lucia Scientific Technical Advisory Group) did not approve a proposal by UCOSP to unblock the Msunduzi.



# Umfolozi farmland - back flooding



## DARNALL - NANOTI RIVER

Before

During



**RICKY B**  
TRANSPORT & PLANT HIRE

## DARNALL - NANOTI RIVER

During

After



**RICKY B**  
TRANSPORT & PLANT HIRE