



MHSC

Mine Health and Safety Council

PARLIAMENTARY PORTFOLIO COMMITTEE

2020/21 ANNUAL REPORT

5 November 2021

MR. DUMISANI DLAMINI

ACEO

PRESENTATION OUTLINE

- **Introduction.**
- **Performance Overview.**
- **MHSC Research Projects.**
- **Seed Funded Projects.**
- **Health and Safety of Women in Mining.**
- **MHSC COVID-19 Response.**
- **Financial Performance.**
- **AG Audit Outcome and Action Plan.**



INTRODUCTION

- This year marks 25 years of the introduction of the Mine Health and Safety Act (Act No. 29 of 1996), as amended.
- Prior to the MHSA, the South African mining sector had the sixth highest fatality rate in the world.
- The MHSA promotes the spirit of Tripartism and cooperation amongst all stakeholders on the mine health and safety of mineworkers and people affected by mining.
- It is through the collaboration that the lowest fatalities were recorded during 2019 as well as the lowest injuries and occupational diseases during 2020.
- The MHSC received an unqualified audit opinion for 2020/21. All efforts towards enhancing governance matters are continually put in place.
- In this regard, independent forensic investigations were instituted regarding allegations of irregular activities. Subsequently, consequence management measures were effected including disciplinary hearings, reporting to law enforcement agencies as well as not considering bonus payment.
- The Council has also commenced with the process of filling key vacant positions.



PERFORMANCE OVERVIEW

Fatalities in the Mining Sector – 1984 to 2020

Type of Mine	Fatalities /year
Gold	Highest : 702 (1986) Lowest: 18 (2019)
Platinum	Highest : 64 (2004) Lowest: 12 (2018)
Coal	Highest : 121 (1987) Lowest: 4 (2016)
Other	Highest : 132 (1989) Lowest: 6 (2019)
All Mines	Highest : 808 (1986) Lowest: 51 (2019)



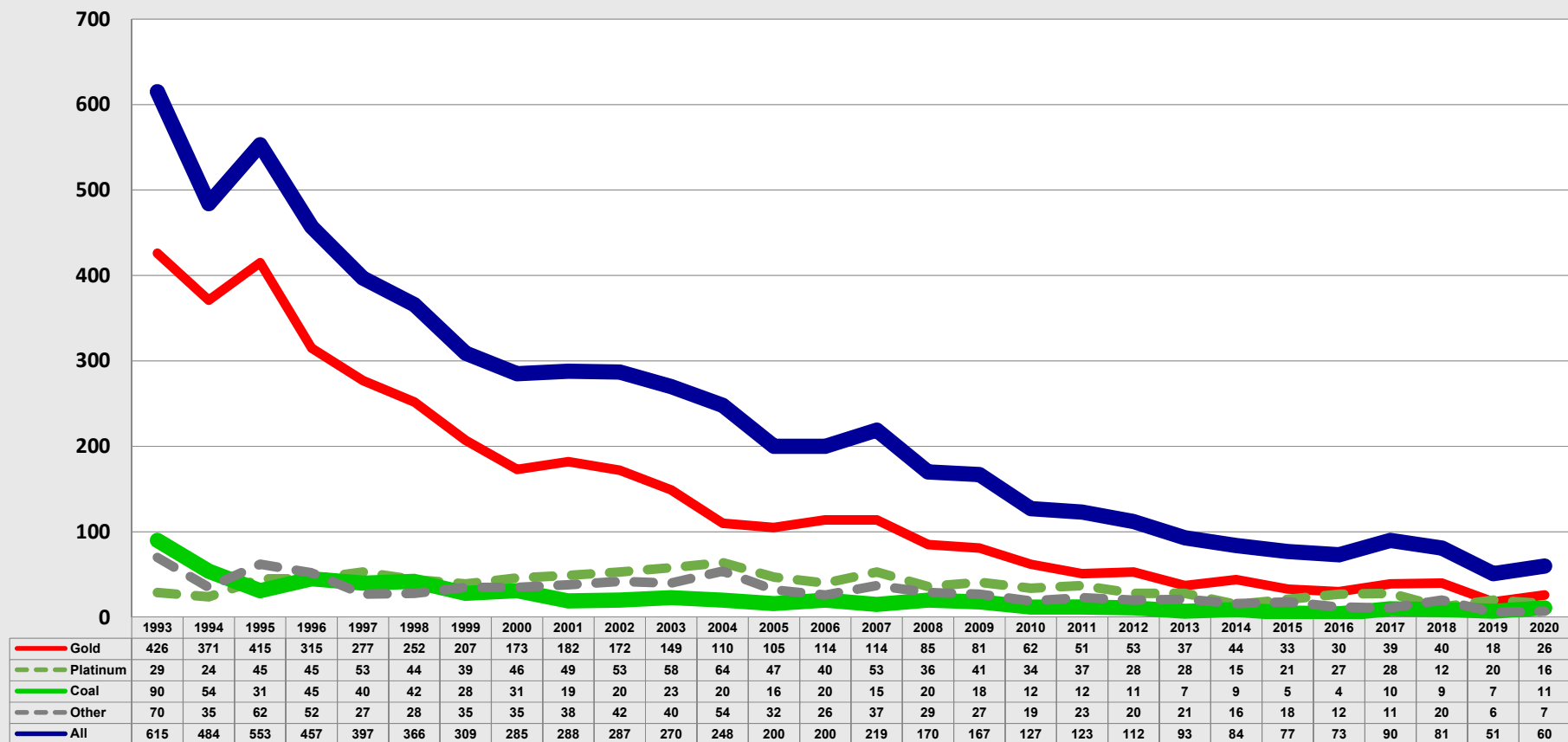
PERFORMANCE OVERVIEW...

Injuries in the Mining Sector – 1984 to 2020

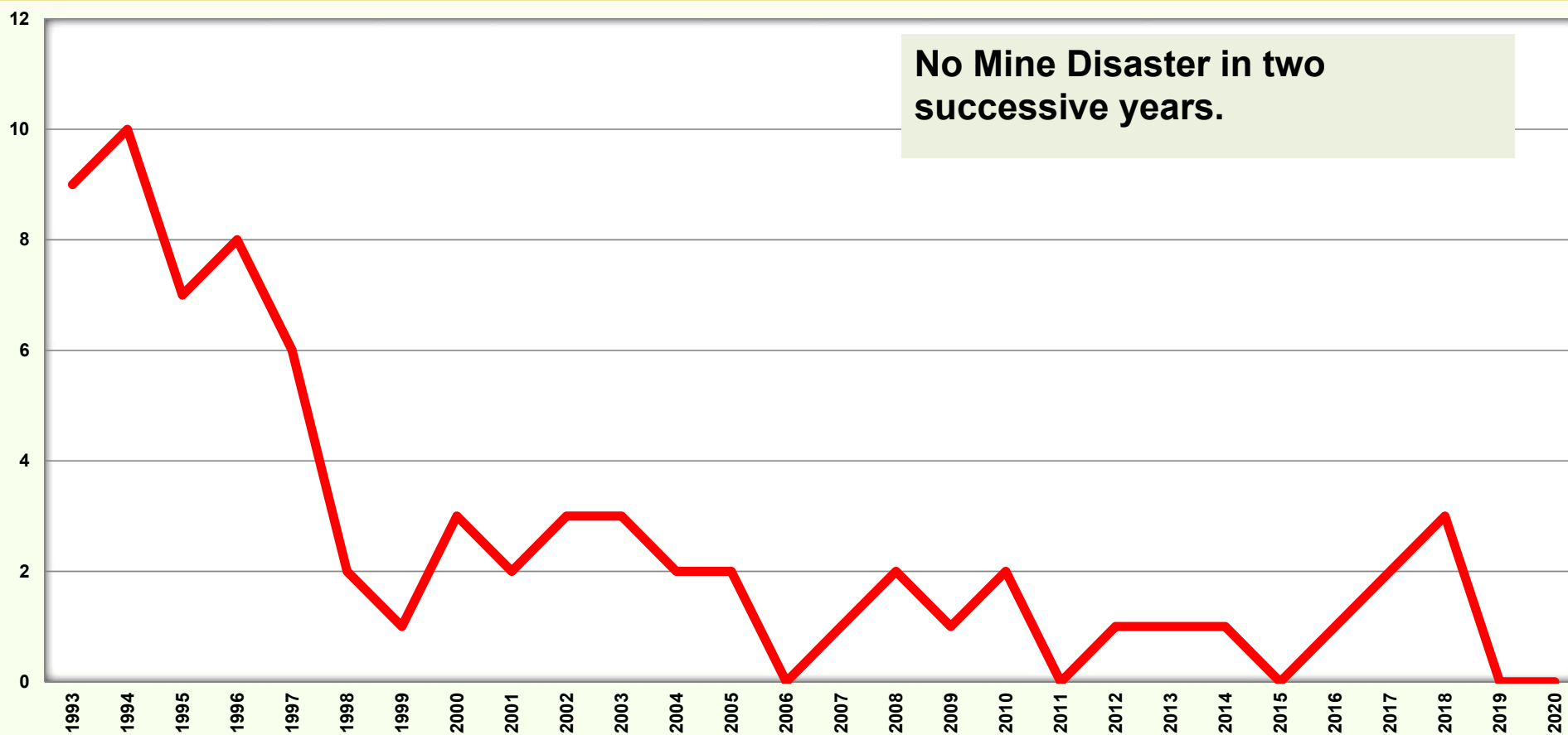
Type of Mine	Fatalities /year
Gold	Highest : 13 611 (1984) Lowest: 606 (2020)
Platinum	Highest : 1 348 (2006) Lowest: 415 (1994)
Coal	Highest : 910 (1984) Lowest: 123 (2020)
Other	Highest : 1 346 (1988) Lowest: 255 (2008)
All Mines	Highest : 15 359 (1984) Lowest: 1 747 (2020)



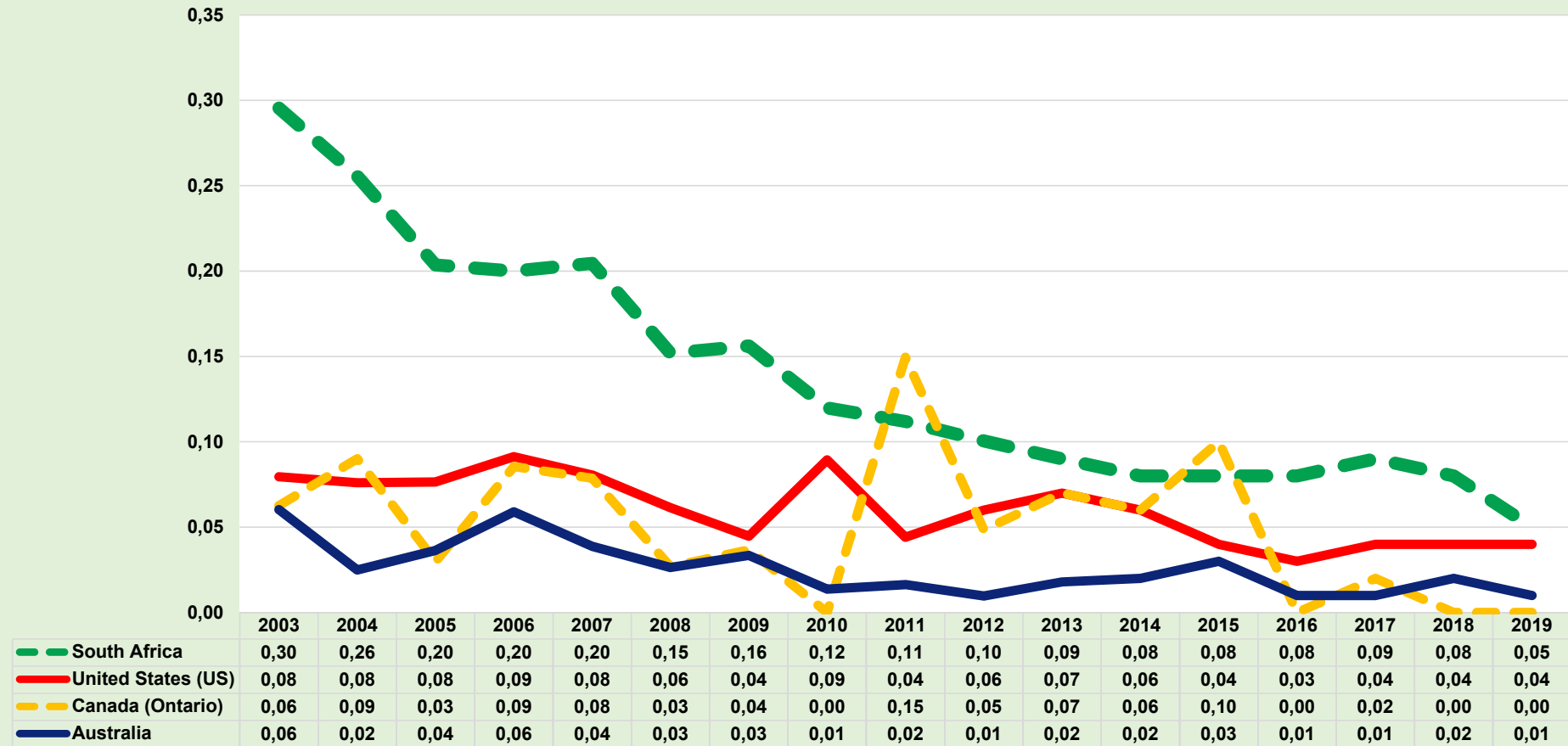
FATALITIES BY COMMODITY



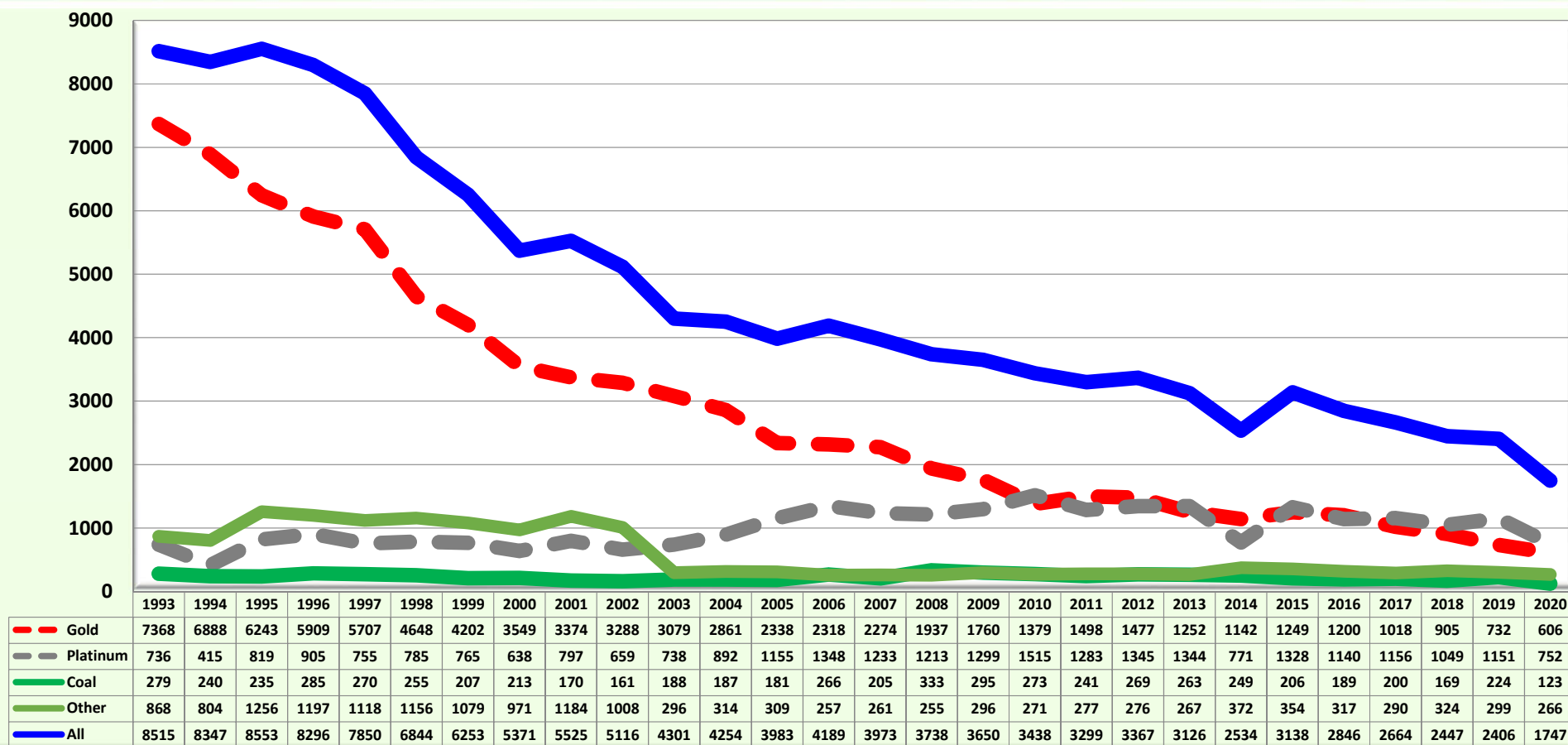
MINE DISASTERS REPORTED BY SECTOR



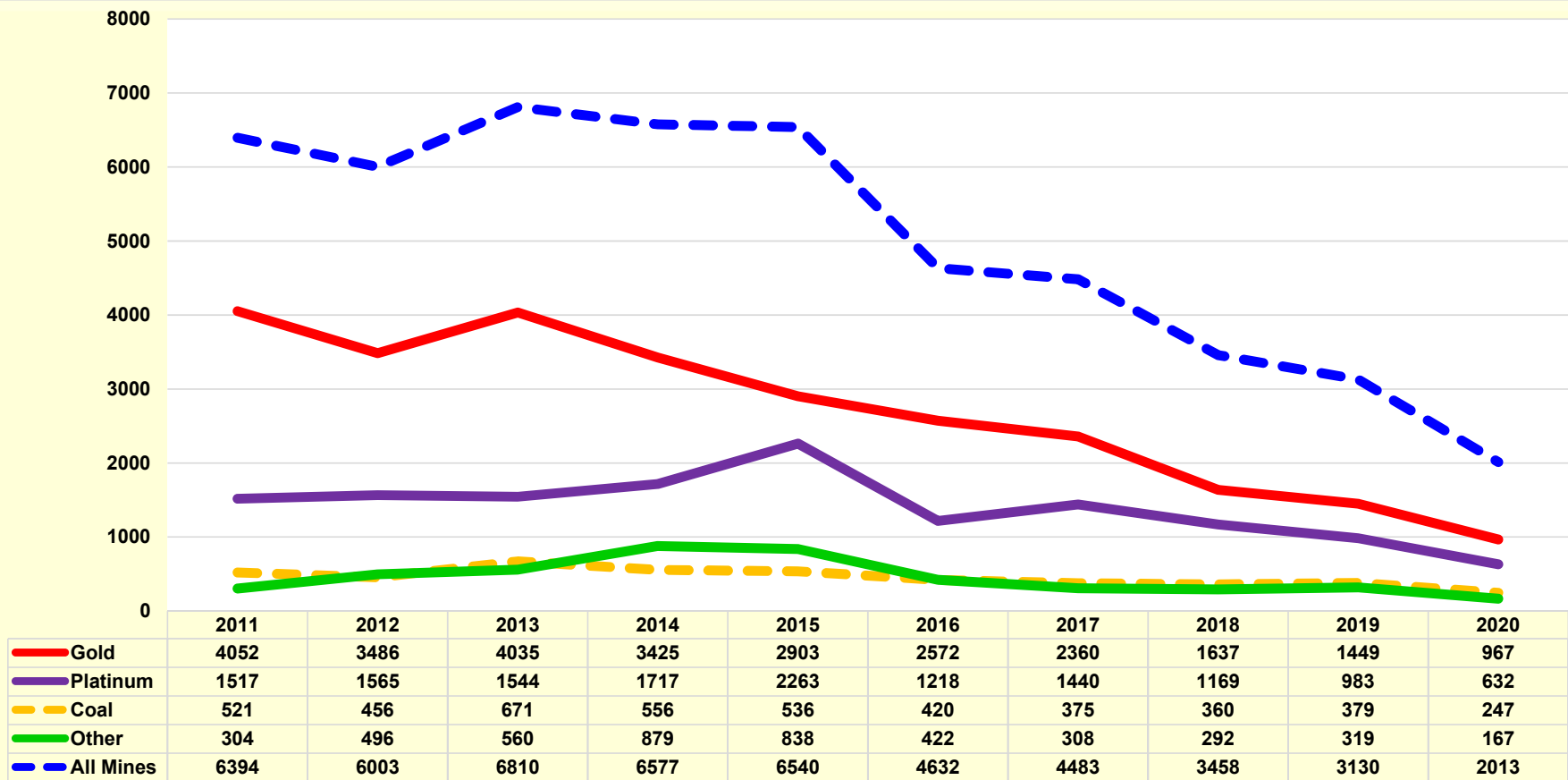
INTERNATIONAL COMPARISON



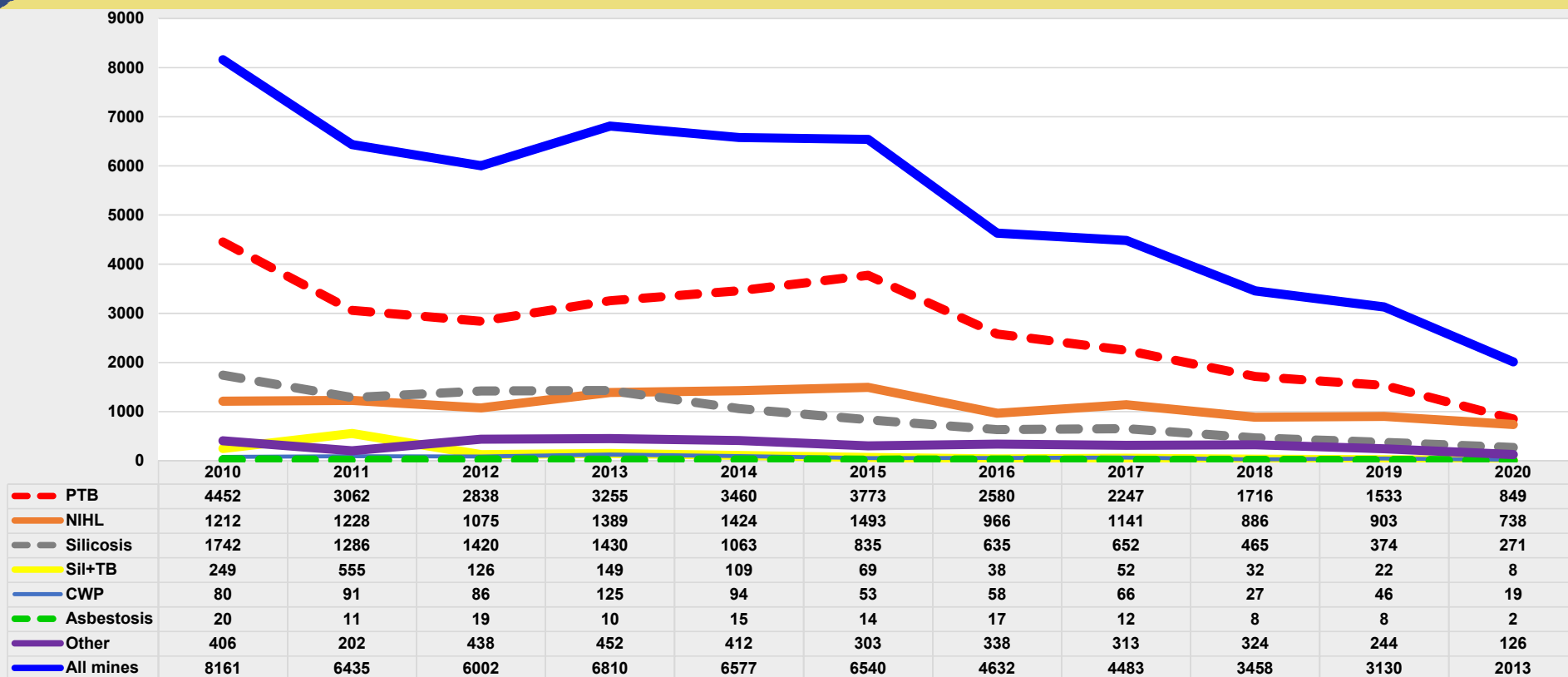
INJURIES BY COMMODITY



OCCUPATIONAL DISEASES BY COMMODITY



MAIN OCCUPATIONAL DISEASES REPORTED



PTB – Pulmonary Tuberculosis

Si+TB – Silico Tuberculosis

NIHL – Noise Induced Hearing Loss

CWP – Coal Workers Pneumoconiosis



MHSC

Mine Health and Safety Council

HIV AND TB REPORTING

Indicators	2020 Outcome
Counselled for HIV.	354 466 (73.5%)
Tested for HIV.	209 315 (59.1%)
Tested HIV positive.	<p>All mines: 10 684 (5.1%)</p> <ul style="list-style-type: none"> • Platinum: 7 435 (8.1%) • Gold: 1 288 (3.2%) • Coal: 1 199 (3.6%) • Diamonds: 101 (1.6%) • Other: 661 (1.8%)
Screened for TB.	449 815 (93.3%)
Diagnosed with TB.	1 726 (0.4%)
TB treatment.	1 676 (97.3%)

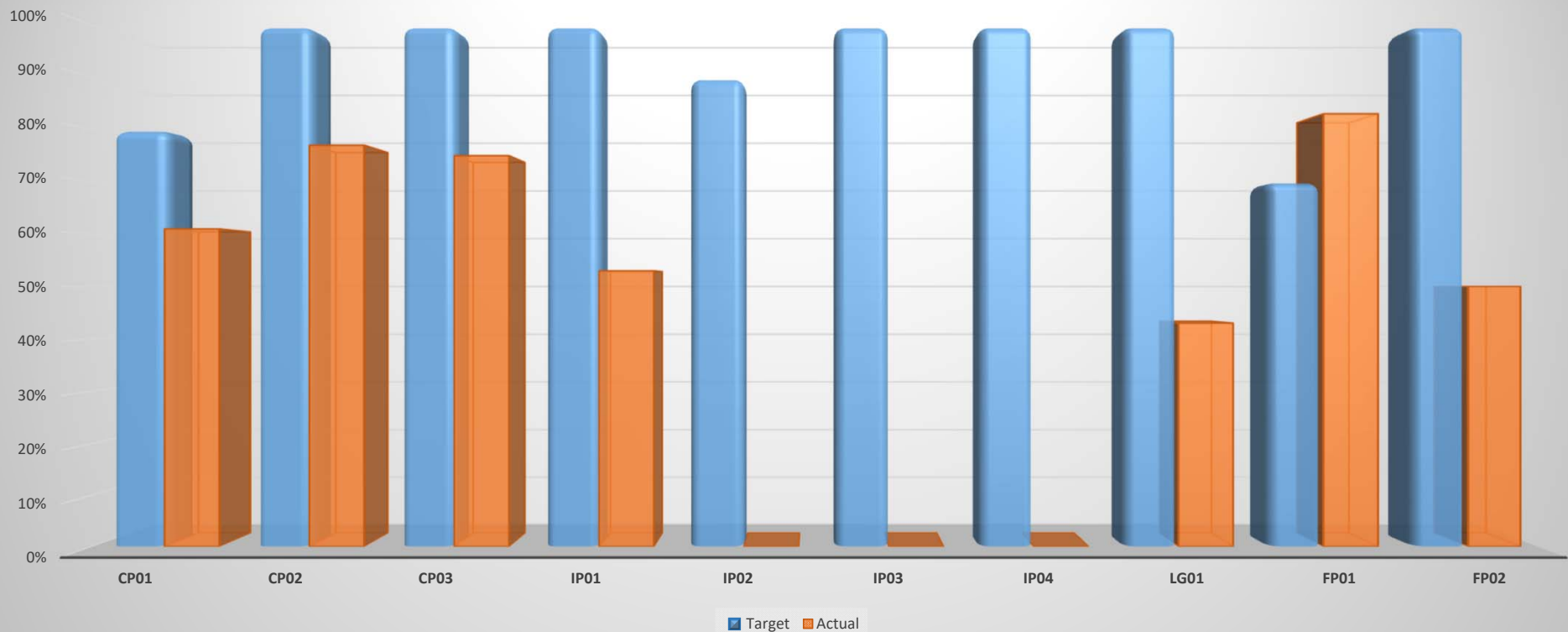


COVID – 19 CASES AND VACCINATION

Tests	254 095
Cases	51 588
Recovered	50 482
% Recovery	98%
Active Cases	408
Deaths	698
Vaccinated	209 073



2020/21 PERFORMANCE OVERVIEW

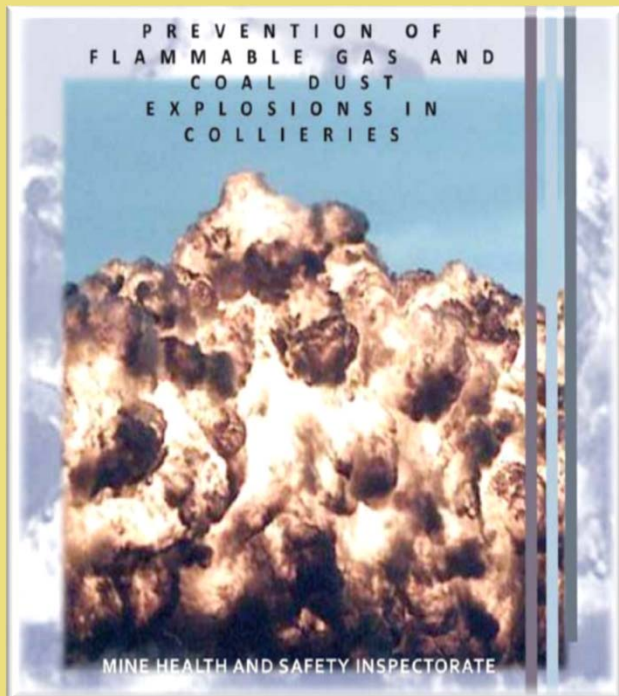


- **80% overall achievement of strategic initiative**
- **94% collection rate of levies**



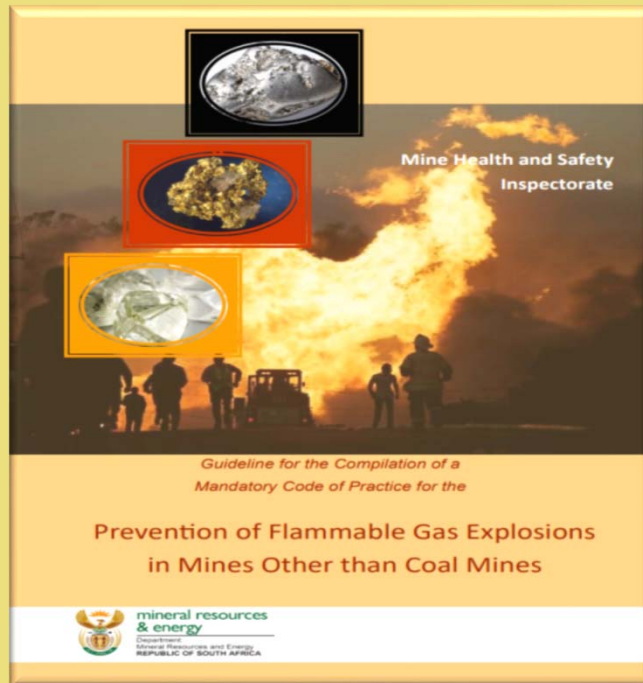
MHSC
Mine Health and Safety Council

LEGISLATIVE ADVICE AND GUIDELINES



Prevention of flammable gas and coal dust explosions in collieries, The implementation of Culture Transformation Framework (CTF) pillars and HIV/AIDS Compendiums

LEGISLATIVE ADVICE AND GUIDELINES...

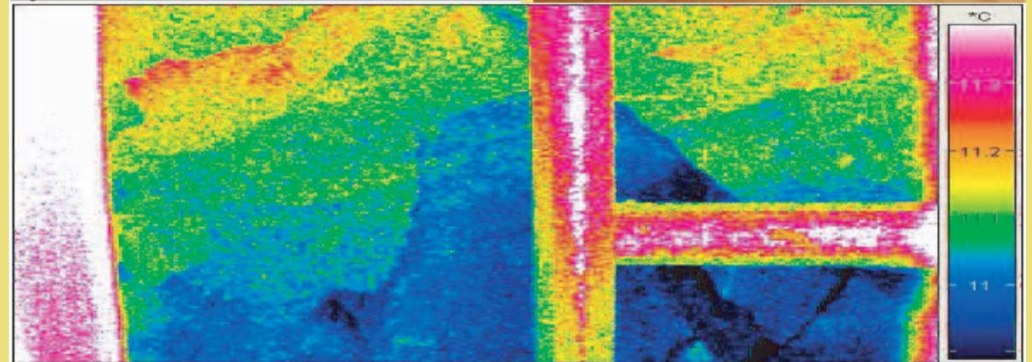
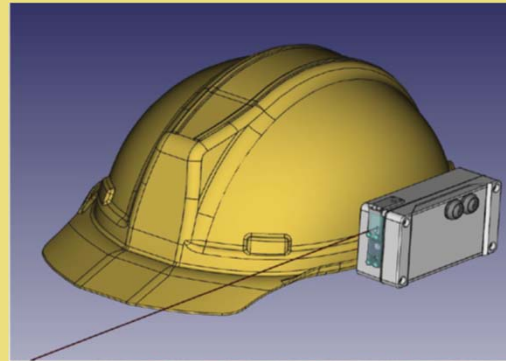


Prevention of flammable gas explosions in mines other than coal mines, Guidance note on the management and control of HIV

MHSC RESEARCH PROJECTS

ROCK MASS ASSESSMENT TOOLS

- Project conducted to assist with Falls of Ground incidents
- The aim of the study was to identify & develop fit-for-purpose tools for efficient and accurate rockmass condition assessment.
- A prototype camera has been developed and can be utilised to assess rock mass condition.
- Uses thermal Images, and Acoustic Capability



MHSC RESEARCH PROJECTS...

ASSESS THE FEASIBILITY OF DEVELOPING COLLISION MANAGEMENT SYSTEMS FOR SOUTH AFRICAN MINES – TO ASSIST WITH TRANSPORTATION INCIDENTS

The Project Outcome Included:

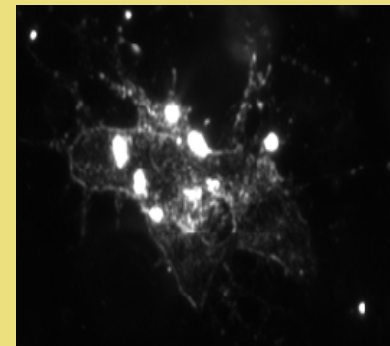
- To establish testing facilities for vehicles used in mining operations
- Achieved through evaluation of collision avoidance technologies, analysis of different scenarios including warning, retarding and stopping technologies based on a combination of simulation and testing
- MHSC in the process of revising legislation to allow for collision avoidance systems implementation



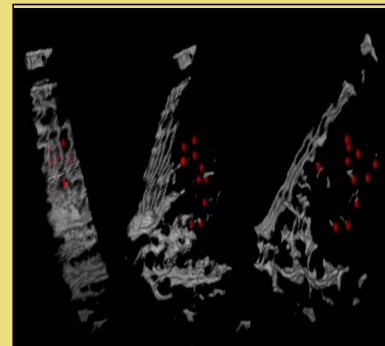
MHSC SEED-FUNDING INITIATIVE

3D UPGRADE OF CYTOVIVO SYSTEM – National Institute of Occupational Health (NIOH)

- A medical **microscope** was upgraded to enable **three dimensional representations** of nano-scale objects, in order to determine the exact location of particles within a cell. The upgrade was limited to the lenses only.
- Applications relevant to pathologists, occupational medicine practitioners, occupational hygienists and researchers are:
 - Confirm the presence of particles within cells
 - Investigation of the link between exposure and disease



Darkfield "2D" image of cells treated with particles.



Rotated "3D" image of cells treated with particles



MHSC
Mine Health and Safety Council

HEALTH AND SAFETY OF WOMEN IN MINING

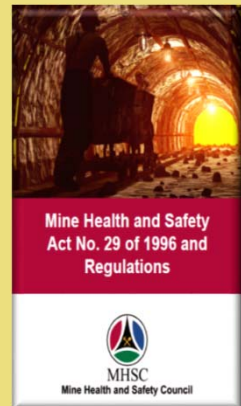
- A Gender-Based Violence event held in Mpumalanga in October 2020 in Collaboration with the DMRE. The focus was on Safety and security of Women in Mining and Raising awareness on guideline for PPE for women in mining.
- The MHSC continues to conduct research and develop legislation to make the mining environment more conducive for women.



MHSC's response to COVID-19 in the SAMI

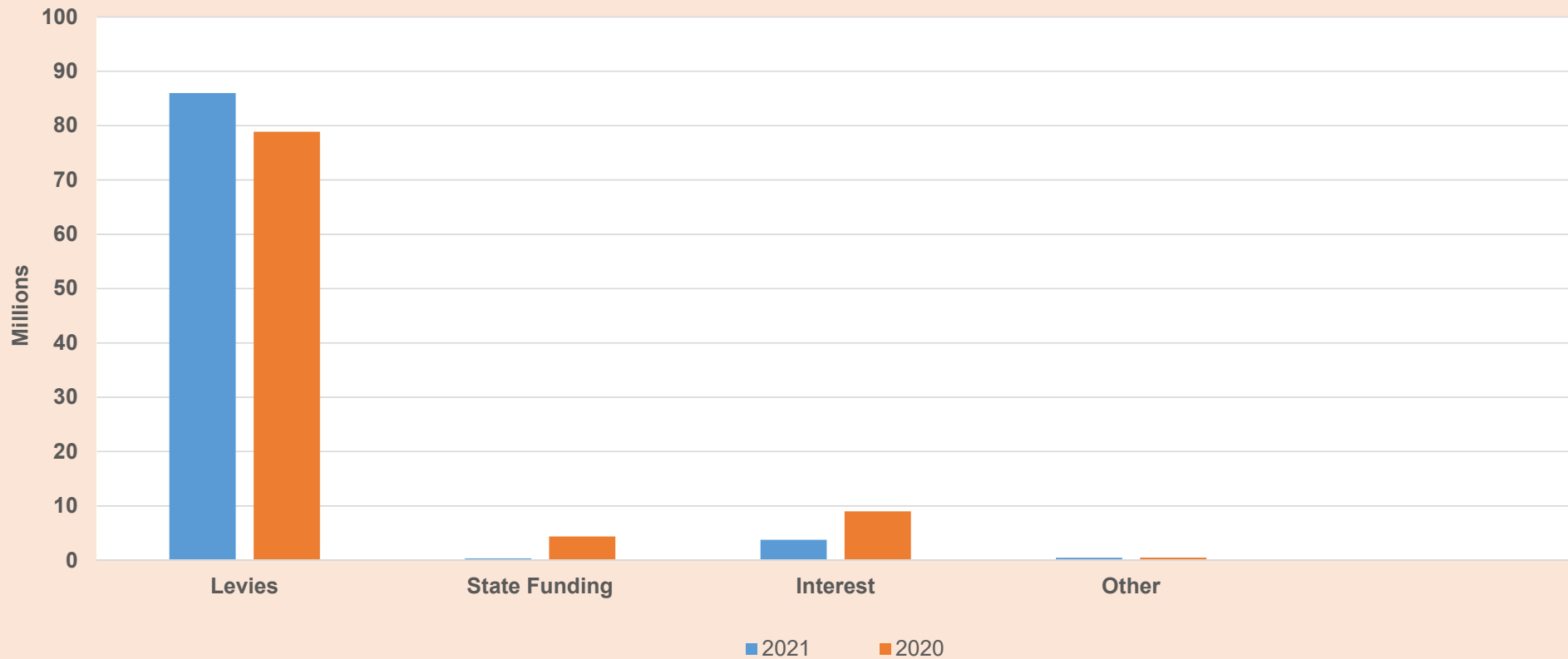
The MHSC reviewed its 2020/2021 Annual Performance Plan and readjusted its budget to include measures that would be put in place to assist in curbing the spread of COVID-19:

COVID-19 related initiative	Facilitation Plan
<ul style="list-style-type: none"> Guiding Principles on the Prevention and Management of COVID-19 in SAMI Return To Work (RTW) Directive through the DMRE 	<ul style="list-style-type: none"> Notices and Guidelines communicated via the DMRE MHSC facilitating communication through website, emails and social media platforms
Guideline for the compilation of a mandatory code of practice for the prevention, mitigation and management of COVID-19 outbreak	<ul style="list-style-type: none"> Guideline Promulgated on 17 May 2020 and revised guideline was promulgated on the 6th of August 2021 Widely disseminated and workshops held to facilitate understanding Q&A sessions continuing with national developments



FINANCIAL PERFORMANCE OVERVIEW

REVENUE COLLECTION



STATEMENT OF FINANCIAL PERFORMANCE AS AT 31 MARCH 2021

	Note(s)	2021 R	2020 R
Revenue			
Revenue from non-exchange transactions			
Mine Levy Income		85,989,626	78,864,348
Interest received		3,777,285	8,891,982
Transfer revenue			
State funding		344,000	4,386,000
Other income		474,139	491,517
Total revenue from non-exchange transactions		90,585,050	92,633,847
Total revenue	14	90,585,050	92,633,847
Expenditure			
Employee costs	15	(52,608,774)	(51,295,077)
Depreciation and amortisation		(4,112,183)	(8,478,827)
Finance costs	16	(43,932)	(141,134)
Lease rentals on operating lease		(3,132,873)	(2,925,264)
Debt Impairment		(5,427,645)	(2,338,439)
Loss on disposal of assets		(591,274)	(2,215)
Operating Expenses	26	(23,166,700)	(37,985,254)
Research and development		(12,615,436)	(9,705,685)
Covid-19 expense		(414,322)	-
Total expenditure		(102,113,139)	(112,871,895)
Deficit for the year		(11,528,089)	(20,238,048)



SUMMARY OF AGSA AUDIT OUTCOMES

- MHSC obtained an unqualified audit opinion with findings during the 2020/21 financial year.
- Procurement Related findings.
- Contract Management findings.
- Irregular Expenditure.
- Accounting related findings.



ACTION PLAN ON AGSA FINDINGS

- **Implementation of the SCM Turn-Around Strategy**
 - Training of SCM officials and user departments.
 - Appointment of additional Bid Committee members.
 - Training of all bid committee members.
- **Implementation of Contract Management Framework**
 - Implement the approved contract management framework and strategy.



ACTION PLAN ON AG FINDINGS

- **Prevention of irregular expenditure**
 - Continuous Training on SCM processes.
- **Training on GRAP Standards**
 - Finalise the appointment of permanent Finance Manager.
 - Training of Finance Officials on GRAAP standards.
- **Implementation of consequences management**
 - Conduct investigations and implement the recommendations.





MHSC

Mine Health and Safety Council

**STRIVING FOR ZERO HARM
EVERY MINeworker RETURN HOME UNHARMED
EVERYDAY**