

PARLIAMENTARY PORTFOLIO COMMITTEE

Recovery Programme status report
2 June 2021

TABLE OF CONTENTS

1. Introduction
2. Garankuwa Campus projects
3. Soshanguve South Campus project
4. Soshanguve North Campus project
5. Pretoria Arts Campus projects
6. Emalahleni Campus project
7. Bombela Campus projects
8. Pretoria West Campus

PURPOSE

- To provide a progress update on recovery projects with the specific information below:
 - Details of all the delayed infrastructure projects including
 - all the variation orders,
 - analysis of the initial projects costs versus revised / amended / varied costs per project
 - the projected date of completion.



INTRODUCTION

- Recovery programme started in 2018 and consists of 11 projects across 7 campuses.
- Current high level status of recovery projects:
 - completed: 3
 - under construction: 6
 - under procurement: 2
- Project under recovery either due to non-performing contractors, non-performing professional teams, internal poor project and/or contract management and delayed start of construction.
- Initial project funding was mostly from DHET IEG Funds, funded in tranches between 2012 and 2017, and a few were funded by TUT.
- For the recovery of the projects, funding is predominantly from the TUT Executive Management Committee fund. With the exception of 3 projects still funded by IEG.

GARANKUWA CAMPUS PROJECTS

1. COMPLETION OF AUDITORIUM
2. COMPLETION OF LECTURE ROOMS
3. CONSTRUCTION OF NEW RESIDENCES



GARANKUWA CAMPUS AUDITORIUM

COMPLETION OF THE GARANKUWA AUDITORIUM –

The construction contract for the original contractor was terminated due to failure by the contractor to meet its contractual obligations and to complete the project.

ORIGINAL PROJECT COST (including professional fees)	PREVIOUSLY SPENT (prior to recovery)	ADDED COST TO RECOVER PROJECT (including professional fees)	RECOVERY TOTAL VARIATION ORDERS	RECOVERY CONSTRUCTION SPEND TO DATE
R 88 713 448	R 85 679 706	R 54 161 284	R 3 366 131,89	R 9 644 578
RECOVERY CONSTRUCTION START	BASELINE COMPLETION	TARGETED COMPLETION	ACTUAL COMPLETION	PERCENTAGE PROGRESS
24 JAN 2020	24 NOV 2020	23 AUG 2021	TBC	67,1%
DESCRIPTION OF VARIATION ORDERS	1. Professional Fees for Electrical Engineer	R 795 469,66		
2. Appointment of registered OHS officer	R 186 185,00			
3. COVID -19 Compliance	R 271 892,50			
4. Stormwater reticulation	R 80 885,25			
5. ICT scope of work installation	R 2 031 699,48			
6. Professional Fees for Civil Engineer for the additional design related to diversion of the main water supply pipe from the water tower supplying the Garankuwa Campus and some sections of Garankuwa township.	R 186 185,00			



GARANKUWA CAMPUS NEW LECTURE ROOMS

COMPLETION OF THE SPECIALISED NEW LECTURE ROOMS

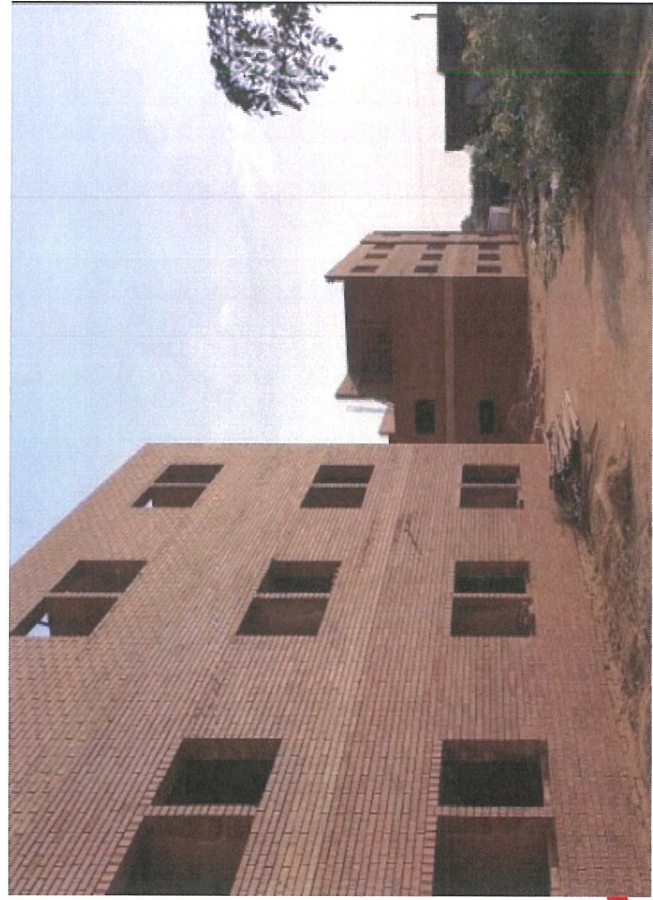
The construction contract for the original contractor was terminated due to failure by the contractor to meet its contractual obligations and to complete the project.

ORIGINAL PROJECT COST (including professional fees)	PREVIOUSLY SPENT (prior to recovery)	ADDED COST TO RECOVER PROJECT (including professional fees)	RECOVERY TOTAL VARIATION ORDERS	RECOVERY CONSTRUCTION SPEND TO DATE
R 87 529 328	R 84 251 725	R 74 100 000	NOT APPLICABLE PROJECT AT TENDER STAGE	
RECOVERY CONSTRUCTION START	BASELINE COMPLETION	TARGETED COMPLETION	ACTUAL COMPLETION	PERCENTAGE PROGRESS
	NOT APPLICABLE PROJECT AT TENDER STAGE			
DESCRIPTION OF VARIATION ORDERS	N/A			

GARANKUWA CAMPUS NEW RESIDENCE

CONSTRUCTION OF THE GARANKUWA RESIDENCES

ORIGINAL PROJECT COST (including professional fees)	PREVIOUSLY SPENT (prior to recovery)	ADDED COST TO RECOVER PROJECT (including professional fees)	RECOVERY TOTAL VARIATION ORDERS	RECOVERY CONSTRUCTION SPEND TO DATE
R 56 540 069	NOT APPLICABLE		R 2 075 980	R 35 589 097
CONSTRUCTION START	BASELINE COMPLETION	TARGETED COMPLETION	ACTUAL COMPLETION	PERCENTAGE PROGRESS
7 JUNE 2018	30 August 2019	31 MAY 2021	TBC	59%
DESCRIPTION OF VARIATION ORDERS				
<ol style="list-style-type: none"> 1. The total number of days applied for delays this claim is 35 days which was approved and granted by the principal agent . 2. Additional quantities to excavation works - Contractor having to remove the underlying clay material to a depth of 3m as opposed to the initial 1.1m allowed for in the tender. The clay material was subsequently replaced with a layer of G5 material as per the Engineer's specification. 				



SOSHANGUVE SOUTH CAMPUS PROJECTS

1. COMPLETION OF SOSHANGUVE 200 BED RESIDENCE
2. CONSTRUCTION OF NEW SOSHANGUVE 100 BED RESIDENCE

SOSHANGUVE 200 BED RESIDENCES

COMPLETION OF SOSHANGUVE 200 BED RESIDENCE – REMEDIAL WORKS TO INCOMPLETE WORKS
 The construction contract for the original contractor was terminated due to failure by the contractor to meet its contractual obligations and to complete the project.

ORIGINAL PROJECT COST (including professional fees)	PREVIOUSLY SPENT (prior to recovery)	ADDED COST TO RECOVER PROJECT (including professional fees)	RECOVERY TOTAL VARIATION ORDERS	RECOVERY CONSTRUCTION SPEND TO DATE
R 63 343 460	R 62 100 008	R 42 647 817	NOT APPLICABLE PROJECT AT TENDER STAGE	
CONSTRUCTION START	BASELINE COMPLETION	TARGETED RECOVERY COMPLETION	ACTUAL COMPLETION	PERCENTAGE PROGRESS
30 Jan 2015	17 May 2017	NOT APPLICABLE PROJECT AT TENDER STAGE		
DESCRIPTION OF VARIATION ORDERS	N/A			

SOSHANGUVE 100 NEW BED RESIDENCES

CONSTRUCTION OF SOSHANGUVE NEW 100 BED RESIDENCE

ORIGINAL PROJECT COST (including professional fees)	PREVIOUSLY SPENT (prior to recovery)	ADDED COST TO RECOVER PROJECT (including professional fees)	RECOVERY TOTAL VARIATION ORDERS	RECOVERY CONSTRUCTION SPEND TO DATE
R 36 382 468	R 7 114 500	R 11 400 000	R2 242 047	R 1 163 638
CONSTRUCTION START	BASELINE COMPLETION	TARGETED COMPLETION	ACTUAL COMPLETION	PERCENTAGE PROGRESS
16 OCTOBER 2020	22 APRIL 2022	22 APRIL 2022	TBC	7%
DESCRIPTION OF VARIATION ORDERS	<ol style="list-style-type: none"> 1. Appointment of a Geotech Engineer to assess the extent of the sink hole discovered on site. To be appointed as a subconsultant under the structural Engineer. R136 160,00 2. The geotechnical studies conducted by Mukona Consulting indicated that the cavity is about 12m x 9m x 5m deep and is filled with boulders of varying , the Civil Engineer recommended that the contractor should close the cavity. R2 083 462,04 3. Appointment of a land surveyor to detect underground services. R 22 425,00 			

SOSHANGUVE NORTH CAMPUS PROJECT

NEW MULTI-PURPOSE BUILDING FOR TEACHER EDUCATION

SOSHANGUVE NORTH NEW MULTI- PURPOSE BUILDING FOR TEACHER EDUCATION

COMPLETION OF NEW MULTI-PURPOSE BUILDING FOR TEACHER EDUCATION

construction contract for the original contractor was terminated due to failure by the contractor to meet its contractual obligations and to complete the project.

ORIGINAL PROJECT COST (including professional fees)	PREVIOUSLY SPENT (prior to recovery)	ADDED COST TO RECOVER PROJECT (including professional fees)	RECOVERY TOTAL VARIATION ORDERS	RECOVERY CONSTRUCTION SPEND TO DATE
R 79 701 270	R 66 465 612	R 54 738 889	R 0	R 22 603 330
CONSTRUCTION START	BASELINE COMPLETION	TARGETED COMPLETION	ACTUAL COMPLETION	PERCENTAGE PROGRESS
10 FEB 2020	10 OCT 2020	11 JUNE 2021	TBC	72%
DESCRIPTION OF VARIATION ORDERS	N/A			



**Tshwane University
of Technology**
We empower people



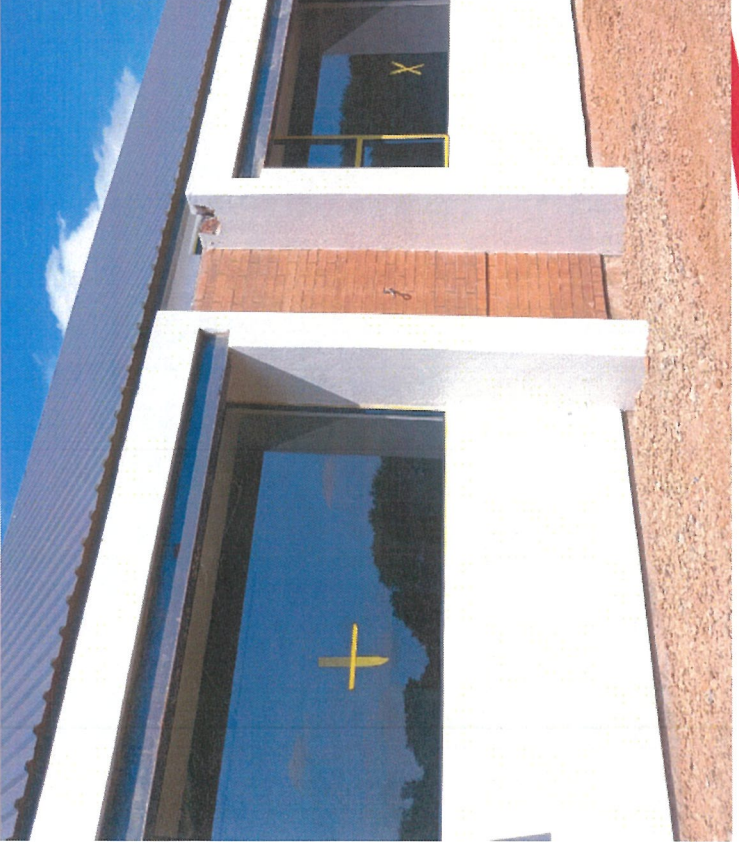
PRETORIA ARTS CAMPUS PROJECTS

1. CONSTRUCTION OF NEW PERIMETER FENCE
2. CONSTRUCTION OF HEALTH AND WELLNESS CENTRE

NEW HEALTH AND WELLNESS CENTRE

CONSTRUCTION OF NEW HEALTH AND WELLNESS CENTRE

ORIGINAL PROJECT COST (including professional fees)	PREVIOUSLY SPENT (prior to recovery)	ADDED COST TO RECOVER PROJECT (including professional fees)	RECOVERY TOTAL VARIATION ORDERS	RECOVERY CONSTRUCTION SPEND TO DATE
R9 661 400		NOT APPLICABLE	R 0	R6 550 731
CONSTRUCTION START	BASELINE COMPLETION	TARGETED COMPLETION	ACTUAL COMPLETION	PERCENTAGE PROGRESS
1 Nov 2019	30 Aug 2020	21 April 2021	TBC	76%
DESCRIPTION OF VARIATION ORDERS	N/A			



EMALAHLENI CAMPUS PROJECT

1. CONSTRUCTION OF NEW EMALAHLENI 200 BED RESIDENCE

EMALAHLENI RESIDENCE

NEW STUDENT 200 BED RESIDENCES WITH MATORN'S HOUSE AND CANTEEN

ORIGINAL PROJECT COST (including professional fees)	PREVIOUSLY SPENT (prior to recovery)	ADDED COST TO RECOVER PROJECT (including professional fees)	RECOVERY TOTAL VARIATION ORDERS	RECOVERY CONSTRUCTION SPEND TO DATE
R 93 693 563	R 32 442 058	NOT APPLICABLE	R 6 514 249	R 17 654 110
CONSTRUCTION START	BASELINE COMPLETION	TARGETED COMPLETION	ACTUAL COMPLETION	PERCENTAGE PROGRESS
17 JAN 2020	30 APRIL 2021	22 OCT 2021	TBC	31%
DESCRIPTION OF VARIATION ORDERS				
1. Removal of the asbestos pipe - During the planning stage the two pipelines were not detected. R 526 920,46				
2. Provision of a loop or link for a 0110mm uPVC domestic line to accommodate a boosted fire hydrant at the guard house. R 162 166,42				
3. Land surveyor estimated cost as per Municipal requirements for Provision of As-built drawings and possible registering of servitudes. R 90 562,50				
4. Contractual additional CPAP R 2 494 736,71				
5. Budget shortfall for the Electrical Works, original budget as at 2017 was R 5,5 M. 2021 tendered price is at R 8 120 719, 23 (Incl. VAT) R 3 239 864,15				



Tshwane University
of Technology
We empower people



BOMBELA CAMPUS PROJECT

1. ALTERATIONS AND ADDITIONS TO EXISTING LIBRARY & ADMINSTRATION BUILDING

BOMBELA ADMIN BUILDING AND ALTERATIONS TO EXISTING LIBRARY

COMPLETED BOMBELA LIBRARY AND ADMIN BLOCK

ORIGINAL PROJECT COST (including professional fees)	PREVIOUSLY SPENT (prior to recovery)	ADDED COST TO RECOVER PROJECT (including professional fees)	RECOVERY TOTAL VARIATION ORDERS	RECOVERY CONSTRUCTION SPEND TO DATE
R 20 000 000	R 12 885 199	R 16 631 693	R 0	R15 301 157
CONSTRUCTION START	BASELINE COMPLETION	TARGETED COMPLETION	ACTUAL COMPLETION	PERCENTAGE PROGRESS
17 JAN 2019	04 APRIL 2020	26 NOVEMBER 2020	26 MARCH 2021	99 %
DESCRIPTION OF VARIATION ORDERS	N/A			



**Tshwane University
of Technology**
We empower people



PRETORIA WEST CAMPUS PROJECT

1. CONSTRUCTION OF MAIN ENTRANCE GATE

CONSTRUCTION OF MAIN ENTRANCE GATE

COMPLETED MAIN ENTRANCE GATE

ORIGINAL PROJECT COST (including professional fees)	TOTAL SPEND TO DATE	ADDED COST TO RECOVER PROJECT (including professional fees)	RECOVERY TOTAL VARIATION ORDERS	RECOVERY CONSTRUCTION SPEND TO DATE
R 23 000 000	R 21 909 842	NOT APPLICABLE	R 1 500 000	R 14 482 340
CONSTRUCTION START	BASELINE COMPLETION	TARGETED COMPLETION	ACTUAL COMPLETION	PERCENTAGE PROGRESS
21 NOV 2017	15 NOV 2018	30 SEPT 2019	01 MAR 2020	99 %
DESCRIPTION OF VARIATION ORDERS				
1. Allubond cladding additional work			R 73 939,80	
2. Turnstile plinths additional work			R139 608,62	
3. Spike barriers addition concrete works			R126 880,65	
4. Road widening no.1			R474 740,04	
5. Road widening north bound			R438 998,50	
6. Deviation of road			R770 000,00	



DEPUTY VICE-CHANCELLOR: OPERATIONS

THANK YOU