

*Every child is a National Asset*

# THE STATE OF THE REOPENING OF SCHOOLS

MR HM MWELI  
DIRECTOR-GENERAL  
DEPARTMENT OF BASIC EDUCATION



# PRESENTATION OUTLINE

1. Introduction
2. International Experience
3. Attendance of Teachers and Learners
4. Projected Learner Drop Out
5. Learners exempted from School Attendance
6. Support to learners exempted from school attendance
7. Readiness to receive learners on 31 August 2020
8. Water and Sanitation
9. Curriculum Coverage for Grade 12
10. Assessment and Examinations
11. Standard Operating Procedures
12. Provision of Psychosocial Support
13. Monitoring Social Distance
14. Monitoring the use of masks
15. Litigations
16. National School Nutrition Programme
17. Teachers with Comorbidities
18. SGB Posts
19. COVID-19 cases
20. Deviations
21. Implementation of Differentiated Timetables
22. Hostel facilities
23. Disruption of Schools
24. QLTC Programmes
25. Vandalised Schools
26. Procurement of COVID-19 essentials
27. COVID-19 essentials Interim Audit
28. Conclusion

# INTRODUCTION

An 11-year-old child studies his Class 6 textbooks and revises the exercises at home in Nairobi, Kenya. He cannot participate in online learning as his family has no mobile phone.





**Canada**

**Europe**

**Asia**

**USA**

**Mexico &  
Central America**

**Caribbean**

**Africa**

**South  
America**

**Australia**

**New Zealand**

# INTERNATIONAL EXPERIENCE

COUNTRY	TIME/DATE SCHOOL REOPENED	EXPERIENCE
Sweden	Schools <b>never closed</b> in Sweden, nor did they substantially change their rules.	<ul style="list-style-type: none"> <li>• <b>Decision</b> to keep Swedish schools and day-care centres open <b>did not have much bearing on infection rates.</b></li> <li>• The country was conscious that opening schools only to close them again, due to resurgences in infections, would be “disastrous” for trust in public authorities.</li> </ul>
UK (Scottish)	11 August	<ul style="list-style-type: none"> <li>• Just <b>0.8% of Scottish cases</b> have involved people <b>under the age of 15.</b></li> <li>• <b>Ventilate rooms</b> as much as possible.</li> <li>• <b>Quarantining</b> of returned library <b>books for three days.</b></li> <li>• <b>Social distancing is not required</b> for children in <b>primary schools</b> but older children might be discouraged from physical contact.</li> </ul>
UK (Welsh)	<ul style="list-style-type: none"> <li>• <b>Some schools</b> opened at the <b>end of June.</b></li> <li>• <b>All schools</b> to open fully in <b>early or mid-September.</b></li> </ul>	<ul style="list-style-type: none"> <li>• Making <b>classes smaller.</b></li> <li>• <b>Staggering classes</b> so only a third (at most) of pupils are present at any one time.</li> <li>• Warned that <b>local flare-ups could lead to school closures</b> once all schools reopen.</li> </ul>
UK (England and Northern Ireland)	<ul style="list-style-type: none"> <li>• Schools to <b>fully open in September.</b></li> </ul>	<ul style="list-style-type: none"> <li>• In June, they began a <b>phased reopening of schools</b> but had to <b>change due to staff shortages</b> and the <b>spatial implications</b> of trying to organize smaller classes.</li> </ul>

# INTERNATIONAL EXPERIENCE...

COUNTRY	TIME/DATE SCHOOL REOPENED	EXPERIENCE
Germany	Partially opened in <b>Spring</b> and <b>fully opened in Summer</b> .	<ul style="list-style-type: none"> <li>• States <b>with lowest infection rates were first to fully open</b></li> <li>• By the end of that first week back, <b>two schools had to be closed due to infections</b>—a teacher in one school, a pupil in the other.</li> <li>• <b>Wearing of masks varied</b> in different states: in some states <b>masks are worn in corridors, canteens, and stairwells</b> while in others doing so was not compulsory.</li> </ul>
Italy	Plans to <b>reopen schools on Sept. 14</b> , after hit very badly by the pandemic	<ul style="list-style-type: none"> <li>• <b>Smaller classes</b> to allow for social distancing.</li> <li>• To bring <b>50 000 temporary teaching staff</b> to support social distancing</li> <li>• Some school districts are literally <b>sawing desks apart</b> so children won't need to be too close to one another.</li> <li>• Learners and teachers will have to <b>wear masks</b> (and the teachers will need to wear <b>face shields</b>, too).</li> <li>• Big push to <b>hold lessons outdoors</b> where possible, or take classes to theatres and museums.</li> </ul>
France	<ul style="list-style-type: none"> <li>• Started reopening schools in <b>May, on a voluntary basis</b>.</li> <li>• Schools began in <b>earnest in late June</b>, after President Emmanuel Macron said it was “obligatory”.</li> </ul>	<ul style="list-style-type: none"> <li>• Dozens of potentially <b>school-linked infections quickly appeared</b>, leading to many <b>urgent school closures</b>, but the government said the length of incubation made it likely that the infections took place before the schools opened their doors.</li> <li>• <b>No social distancing</b> rules for <b>kindergarten</b> children</li> <li>• A <b>one-metre</b> rule for <b>primary schools</b>.</li> <li>• A <b>mask mandate for older children</b> in cases where social distancing was not possible.</li> <li>• After reopening, they went to summer break, therefore September will be the time to assess how things are going.</li> </ul>



back.com • 1297

# ATTENDANCE OF GRADES 7 & 12 TEACHERS AND LEARNERS

PROVINCE	GR 7 TEACHERS	GRADE 12 TEACHERS	GRADE 7 LEARNERS	GRADE 12 LEARNERS	MEASURES TO FOLLOW UP ON LEARNERS WHO ARE NOT RETURNING TO SCHOOL
Eastern Cape	73.7%	81.6%	67.8%	77.3%	Phone parents, E-mail parents to enquire about learners whereabouts; WhatsApp follow up; Home visits; Notices sent through classmates
Free State	79.5%	83.9%	75.4%	83.3%	WhatsApp; Personal calls; Encouraging learners to return to schools through public messaging.
Gauteng	73%	75%	73%	85	Schools are encouraging parents to consider returning their children back to school.
KwaZulu- Natal	82%%	82%	81.4%	87%	<ul style="list-style-type: none"> <li>Contacts parents and advises them on registration procedures for Home Learning</li> <li>Solicited assistance from members of the School Governing Bodies to encourage parents to play their role</li> <li>Parents have been given opportunity to inform schools if their children have comorbidities</li> </ul>
Limpopo	96%%	91.9%	84.8%	93.9%	SGBs and SMTs are communicating with parents, and SMTs engage parents encouraging them to send their children to school.
Mpumalanga	89.5%	92.5%	82.5%	94.32%	<ul style="list-style-type: none"> <li>Encourage parents to send absent learners to school through telephone calls SMSs, Local Radio Stations or home visits.</li> <li>Dates for returning of respective grades are timeously communicated to parents and learners</li> </ul>
Northern Cape	87.8%	87.8%	72,61%	85%	QLTC Back to School Campaign underway
North West	89.07%	88.24%	87.5%	90.45%	<ul style="list-style-type: none"> <li>Schools communicate with the affected parents and learners through letters and group SMSs/ WhatsApp.</li> <li>Tribal authorities, local councillors and other stakeholders assist with mobilising the return of learners.</li> </ul>
Western Cape	89%	89%	46.4%	70.4%	<ul style="list-style-type: none"> <li>Communication from principals to parents; social media campaigns, articles in the media.</li> <li>Encourage face-to-face engagements in the classroom.</li> <li>Focus will be on Matriculants, without giving the impression that the other Grades/learners are less important.</li> </ul>



# POSSIBLE LEARNER DROP OUT



# PROJECTED LEARNER DROP OUT

PROVINCE	GRADE 7	GRADE 12
Eastern Cape	3350	1195
Free State	3030	1092
Gauteng	1066	1087
KwaZulu-Natal	38541	18708
Limpopo	87	60
Mpumalanga	5699	
Northern Cape	Not reported yet	580
North West	317	640
Western Cape	5-15%	




# LEARNERS EXEMPTED FROM SCHOOL ATTENDANCE

PROVINCES	COMORBIDITIES	ILL HEALTH OTHER THAN COMORBIDITIES	FEAR/ANXIETY	VIRTUAL/ONLINE LEARNING BY THE SCHOOL	VIRTUAL/ONLINE LEARNING BY A SERVICE PROVIDER
<b>Eastern Cape</b>	3581	2050	0	0	0
<b>Free State</b>	748	11	61	4	18
<b>Gauteng</b>	539	864	1468	0	0
<b>KwaZulu Natal</b>	1431	698	640	1476	17
<b>Limpopo</b>	299	106	796	119	0
<b>Mpumalanga</b>	604	421	1448	971	1228
<b>Northern Cape</b>	0	0	0	0	0
<b>North West</b>	1169	140	1291	301	43
<b>Western Cape</b>	2532	0	28 861	0	0

# MATERIALS PROVIDED FOR LEARNER SUPPORT



  
**SOCIAL SCIENCES:**  
**GEOGRAPHY**  
**GRADE 9**  
**2020**  
**REVISED CURRICULUM**  
**RESOURCE PACK**  
**BOOKLET**

**NAME:** \_\_\_\_\_

**GR:**    9 \_\_\_\_\_

Compiled by Ms. Michel

# SUPPORT TO LEARNERS EXEMPTED FROM SCHOOL ATTENDANCE

PROVINCES	COMORBIDITIES	ILL HEALTH OTHER THAN COMORBIDITIES	VIRTUAL/ONLINE LEARNING BY THE SCHOOL	VIRTUAL/ONLINE LEARNING BY A SERVICE PROVIDER
Eastern Cape	Notes; <b>Video Lessons; online learning programme; E-mail work</b> ; Work uploaded on Google Classroom; WhatsApp notes; Textbooks loaded on iPad	Notes; <b>Video Lessons; online learning programme; E-mail work</b> ; Work uploaded on Google Classroom; WhatsApp notes; Textbooks loaded on iPad	<b>Video Lessons; online learning programme; E-mail work</b> , Google Classroom; WhatsApp	<b>Video Lessons; online learning programme; E-mail work</b> , Google Classroom; WhatsApp
Free State	<b>Resources pack emailed to all the schools; Study Guides; Worksheets; IBP DVDs ; YouTube videos.</b>	<b>Resources pack emailed; Study Guides; Worksheets; IBP DVDs; YouTube videos.</b>	<b>IBP DVDs and YouTube videos.</b>	<b>IBP DVDs; YouTube videos.</b>
Gauteng	<b>Learner Activity Packs (LAPS); daily time tables</b> , key topics for learning and informal assessment plans and activities	<b>Learner Activity Packs (LAPS); daily time tables</b> ,	<b>Virtual learning</b>	Does not approve the applications of such learners
KwaZulu-Natal	Collect work. Use their <b>smartphones</b> to receive work from school,	<b>Simplified lessons; Printing self study packs</b>	<b>WHATSAP lessons; electronic self learning programmes and workbooks</b>	None
Limpopo	<ul style="list-style-type: none"> <li><b>Weekly tasks</b></li> <li>Communicate and send tasks manually through parents and via <b>electronic media</b></li> </ul>		Previous strategies apply to these learners as well.	No learners learning through virtual/online learning
Mpumalanga	<ul style="list-style-type: none"> <li><b>LTSM</b> by the schools.</li> <li>Regular communication via <b>social media</b>.</li> <li>Use Vodacom e-school; <b>Mind-set and</b> DBE website</li> </ul>		<b>Learning materials; tasks; Worksheets</b>	<b>WhatsApp</b> , SMSs, E-Learning.
Northern Cape	Learner Support Packages for each subject in all grades. <b>Self-Study Packages</b> that should be accessible and are easy to follow (written) instructions.			
North West	Guidelines and plans made available to schools	<b>Face-to-face;;</b> printed material; <b>WhatsApp, Zoom,</b>		<b>Online and zero rated</b> digital platforms;
Western Cape	<ul style="list-style-type: none"> <li>Collect modules from schools</li> <li>Hardcopy curriculum packs are delivered</li> <li><b>Online classes</b> or <b>WhatsApp</b> groups.</li> </ul>	<ul style="list-style-type: none"> <li>Collect modules from schools</li> <li>Hardcopy curriculum packs are delivered</li> <li>Schools have <b>online classes</b> or <b>WhatsApp</b> groups.</li> </ul>		Gr 10-12 use the <b>telematics broadcasts</b> (teaching revision)



# READINESS TO RECEIVE LEARNERS ON 31 AUGUST 2020

PROVINCE	NUMBER OF LEARNERS RETURNING	NUMBER OF LSEN	READINESS OF FACILITIES	READINESS IN TERMS OF TEACHERS	NUMBER OF CLEANERS	NUMBER OF SCREENERS
Eastern Cape	1 200 247	7434	Access to <b>water</b> ; Procured <b>Ablutions</b>	Timetable model to <b>overcome</b> the <b>shortage of teachers</b>	<b>18970</b> (number included both Screeners and Cleaners)	
Free State	595 401	3335	<b>Ablution facilities</b> ; adequate water supply;	Re-worked school time table for to deal with <b>overcrowding</b> .	3609	2838
Gauteng	365 139	28 631	Water Supply in place, Procured <b>109 mobile classroom</b>	Over <b>1300 substitutes teachers available</b>	180	5500
KwaZulu-Natal	2 479 631	5303	Water for all schools provided	<b>Substitute</b> and <b>extra posts</b> have been made available	6148	6148
Limpopo	274 590	8500	<b>Water</b> and <b>sanitation</b> challenges	<b>Teachers</b> with <b>comorbidities</b>	Recruitment of Screeners and Cleaners in progress	
Mpumalanga	174 953	919	<b>Deep cleaned</b> , markers applied, Sanitation challenges are being addressed. <b>Mobile classrooms</b> .	Teachers with <b>comorbidities</b> have not yet been <b>substituted</b> .	2983	
Northern Cape	50925	1915	<b>Water, sanitation</b> and <b>vandalism</b> projects in place	80 <b>substitute</b> educators identified	645	
North West	50925	1568	<b>97%</b> of facilities are ready	Shortfall of <b>785</b> substitute teachers	<b>2 Cleaners</b> per school	
Western Cape	1 10549	Unknown at this stage	Facilities are <b>ready</b> to receive learners back;	Schools to apply for <b>Teaching Assistants</b> 16	• <b>No additional</b> screeners and cleaners have been appointed;	



# WATER & SANITATION



Drinking Water

+

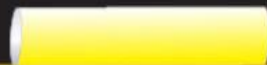


Sanitation

+



Hygiene



# EMERGENCY WATER PROVISION

PROVINCE	SCHOOLS THAT REQUESTED ASSISTANCE	NUMBER OF TANKS INSTALLED	WATER TANKS FILLED WITH WATER	WATER TANKS WITHOUT WATER	TANKS ON PERMANENT STANDS	TANKS ON TEMPORARY STANDS	FREQUENCY OF FILLING WATER	COMPLAINTS FROM SCHOOLS	MEASURES TO DEAL WITH COMPLAINTS
Eastern Cape	756	777	773	0	0	765	Weekly or more frequently when Required	School Management to Provincial Departments	"Happy Letters" for each installation & Daily liaison meetings between DBE and PEDs
Free State	87	180	87	0	0	71			
Gauteng	67	67	67	0	67	0			
KwaZulu Natal	1125	965	1094	0	0	813			
Limpopo	522	522	708	0	0	500			
Mpumalanga	435	131	468	0	0	131			
Northern Cape	95 Water Projects (2 without Water)	110	110	0	110	0			
North West	248	64	263	0	0	64			
Western Cape	0	0	0	0		0			
<b>Total</b>	<b>3335</b>	<b>2639</b>	<b>3393</b>	<b>0</b>	<b>177</b>	<b>2344</b>			

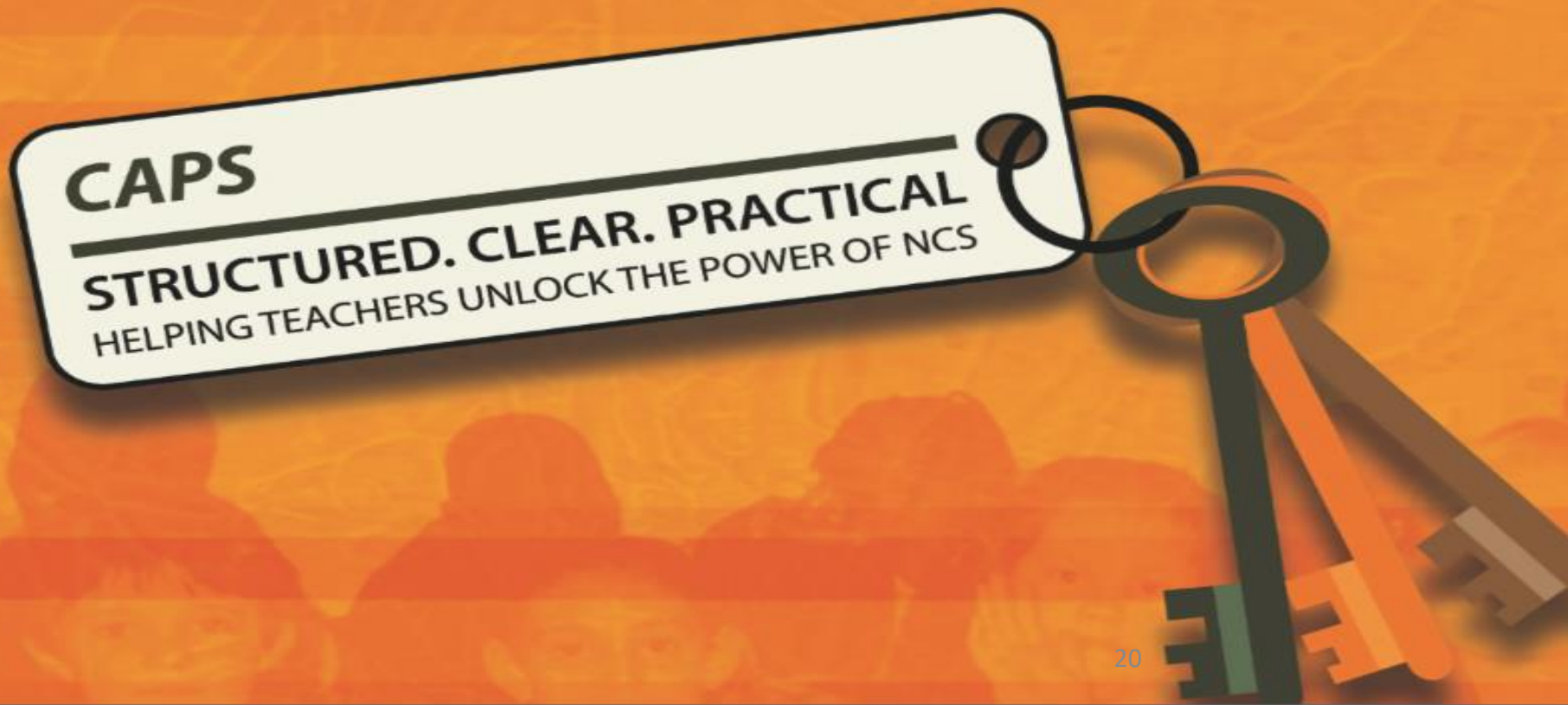


# EMERGENCY SANITATION

PROVINCE	SCHOOLS THAT REQUESTED ASSISTANCE	NUMBER OF SANITATION UNITS	FREQUENCY OF SERVICE	REPLACED SANITATION UNITS	COMPLAINTS FROM SCHOOLS	MEASURES TO DEAL WITH COMPLAINTS
Eastern Cape	970	2655	Weekly	Where Required	School Management to Provincial Department	"Happy Letters" for each installation & Daily liaison meetings between DBE and PEDs
Free State	0					
Gauteng	0	44 schools 20 units per school	Weekly	Where Required		
KwaZulu Natal	0					
Limpopo	452	1746	Weekly	Where Required		
Mpumalanga	43 Challenges 4 did not Open	10 per School	As and when required	6		
Northern Cape	0					
North West	0	211	Weekly	Where Required		
Western Cape	0	0				
<b>Total</b>	<b>1422</b>	<b>5922</b>		<b>6</b>		

# *National Curriculum Statement (NCS)*

## *Curriculum Assessment Policy Statement*



# CURRICULUM COVERAGE FOR GRADE 12

PROVINCE	MEASURES TO SUPPORT GRADE 12 LEARNERS IN CURRICULUM COVERAGE	BROADCAST AND ONLINE/VIRTUAL SUPPORT PROGRAMMES	SUPPORT INITIATIVES FOR GRADE 12 LEARNERS INCLUDING LEARNERS WITH SPECIAL EDUCATION NEEDS
Eastern Cape	<b>School plan</b> developed for the distribution of work and collection of learner evidence	<b>Digital resources</b> (self-study worksheets and <b>pace-setters</b> )	<b>School plan</b> developed for the distribution of work and collection of learner evidence
Free State	<b>Question banks</b> electronically and hardcopies; printed revision material; school based support programmes, such EHP and weekend classes.	Online <b>curriculum coverage</b> monitoring tools; <b>WhatsApp</b> and <b>e-mail</b> communication and <b>zoom sessions</b>	<b>Question banks</b> electronically and hardcopies; Supply <b>printed revision material</b> .
Gauteng	SBA, PAT and Orals assessments; Teachers encouraged to consider <b>differentiation</b> of learners in terms Highflyers, Progressed and Learners at risk	Open source platforms; e.g. Teams, <b>WhatsApp</b> ; <b>Zoom</b> etc.	<b>Assessment items</b> and tasks; <b>Online support</b>
KwaZulu Natal	Support material[]; Normal and Extra classes; Five + One (Concurrent running of teaching and Revision; Booklets on Examination guidelines; Digital and Radio and TV Programmes; <b>Learner Camps</b>	<b>Recorded/live radio lessons</b> on 26 community <b>radio stations</b> , 3 regional stations and 1 <b>national station</b>	<b>After school hours</b> and during <b>weekends</b> ; <b>Individual consultation</b> ; Applications for <b>concessions</b> for NSC exams; <b>Additional notes, tutorials</b> and assessments
Limpopo	<b>Heymaths</b> (Grades R-12) and <b>Heyscience</b> (Grades 7-12). Mind the gap study guides	The <b>zero-rated</b> Vodacom e-School; Siyavula offers free e-text books	The <b>enrichment programmes</b> apply to Grade 12 learners with special education needs.
Mpumalanga	Visits by subject advisors; After school and <b>weekend classes</b>	Radio and TV lessons, <b>ligbron online</b> and MSTA video recorded lessons, provincial curriculum website	Subject Advisors support schools; created <b>Social media</b> platform
Northern Cape	<b>School Bag Audit</b> ; Radio Talk Shows	Self-paced learning modules; working with <b>TeachSA</b> on the development of a <b>digital portal</b>	Mobile apps will be shared with Special Schools; <b>Soft copies</b> of material are provided to LSEN schools for translation into braille
North West	<b>On line</b> platform; printed materials; FET assessment pack; Resource packs; Revision materials	<b>Radio</b> broadcast; Online platforms; <b>TV</b> Broadcast; Offline Content packages; (Train Your Brain)	Learning and teaching support material, <b>assistive devices</b> and <b>therapeutic support</b> .
Western Cape	<b>Weekly lessons</b> ; <b>self-directed learning</b> ; ' <b>Tips for Success</b> '; <b>Revision programme</b> Revision programme; Telematics broadcasting	<b>Online/virtual support</b> programmes; Live broadcasts of <b>telematics MsTeams &amp; REACT</b> ; <b>WhatsApp mindset videos</b> ; <b>Online tutoring</b>	Text in <b>large font</b> is provided; Application for <b>concession</b> ; <b>Lessons in SASL</b> sent to learners via <b>WhatsApp</b> and on <b>Facebook</b> .

# CURRICULUM COVERAGE FOR GRADE R - 11

PROVINCE	MEASURES TO SUPPORT GRADE R-11 LEARNERS IN CURRICULUM COVERAGE	BROADCAST AND ONLINE/VIRTUAL SUPPORT PROGRAMMES TO SUPPORT GRADE R TO 11 LEARNERS	SUPPORT INITIATIVES FOR GRADE R-11 LEARNERS INCLUDING LEARNERS WITH SPECIAL EDUCATION NEEDS
Eastern Cape	School plan developed for the <b>distribution of work and collection</b> of learner evidence	<b>Digital resources</b> (self-study worksheets and a variety of curriculum support materials, including pace-setters, availed on ECDoE curriculum website	<b>School plan</b> developed for the distribution of work and collection of learner evidence
Free State	<b>Tutorial material</b> for Mathematics Grade 6 & 7; <b>Worksheets material</b> for NS/T Grade 6 & <b>Exemplar question papers.</b>	Weekly <b>Lesedi FM broadcasts</b> lessons for 30 minutes focussing on Maths, Tech Maths, Physical Science and Sesotho; <b>Broadcast lessons</b> in grade 8 to 11	Combination of Columns A and B
Gauteng	<b>PowerPoint presentations</b> for ALL the topics. <b>Question papers; Revision booklet</b> (Afrikaans and English); <b>Support material per topic:</b> Topic test,.	Open source platforms for communication various platforms e.g. Teams, <b>WhatsApp; Zoom</b> etc.	<b>Packages</b> prepared for other schools; <b>Mediation of Revised ATPS</b> and Teacher guideline documents on Fundamentals done with all schools including Special Schools
KwaZulu Natal	Worksheet <b>handbook; material;</b> Subject Specialists are in <b>continuous monitoring</b> of the work of teachers through <b>online</b> means	<b>Recorded/live radio lessons; Telematics Record lessons</b>	<b>WhatsApp</b> or <b>email groups;</b> home learning resource support packs every 2-4 weeks; providing <b>data</b> to teachers/therapists for communication with parents.
Limpopo	• <b>Heymaths</b> (Grades R-12) and <b>Heyscience</b> (Grades 7-12). Mind the gap study guides	<b>The enrichment programmes. Appropriate LTSM</b> for partially sighted and the blind	The <b>35 Outreach Team</b> members, who are comprised of Social Workers, Speech Therapists, Occupational Therapists, <b>Physiotherapists,</b> Educational Psychologists and Senior Education Specialists.
Mpumalanga	Conduct school support visits; social media platforms to support learners at home	Radio lessons, <b>online lesson broadcast</b> and TV programmes are used to support grade R-11.	LSEN are included in all mainstream <b>curriculum activities</b> and wherever a need arise schools use the accommodation policy to address challenges
Northern Cape	Mediation of <b>Annual Teaching Plans (ATPs)</b> ; Assist with issues around electives, <b>School Bag Audit</b>	<b>Virtual mediation; Audio lessons</b> were broadcast on provincial community radio stations ; Recorded lessons ; Learner Support Packages	<b>Material broadcasted</b>
North West	All <b>curriculum documents</b> distributed; School based <b>monitoring</b> and support programme	<b>Reading App</b> “North West Kiddy’s book Club”; Offline content distributed to schools; Departmental website uploaded with material.	Reading App “North West <b>Kiddy’s book Club</b> ” Offline content distributed to schools; Departmental website uploaded with material
Western Cape	<b>Weekly lessons; self-directed learning; ‘Tips for Success’; Revision programme</b> Revision programme; Telematics broadcasting	<b>Online/virtual support</b> programmes; Live broadcasts of <b>telematics MsTeams &amp; REACT; WhatsApp mindset videos; Online tutoring</b>	Text in <b>large font</b> is provided; Application for <b>concession; Lessons in SASL</b> sent to learners via <b>WhatsApp</b> and on <b>Facebook</b> .

# ASSESSMENT AND EXAMINATIONS

PROVINCE	NUMBER OF LEARNERS REGISTERED FOR NSC	NUMBER OF EXAM CENTERS	NUMBER OF MARKERS	NUMBER OF MARKING CENTERS	STEPS TAKEN TO COMMUNICATE THE RISK ADJUSTED DIFFERENTIATED APPROACH ON CURRICULUM AND ASSESSMENT FOR GRADE R TO 11 TO SCHOOL
Eastern Cape	135 782	1090	5564	24	Circulars are issued to schools; Districts managers to assist schools
Free State	44 022	344	2171	24	Meeting to discuss the practical implementation of Differentiated Risk adjusted approach to subject planning <b>as part of the Provincial multiyear Curriculum Plan</b>
Gauteng	239 347	1088	12 149	30	The Risk Adjusted Subject Planning <b>will be communicated</b> to all schools to implement once finalised.
KwaZulu-Natal	228 282	1750	7490	29	<ul style="list-style-type: none"> <li>• <b>Location</b> of the <b>subject planning process</b> in the broader curriculum recovery strategy</li> <li>• Ensure that <b>Curriculum Recovery</b> is contextualised at school level with the use of modern technology where possible</li> </ul>
Limpopo	132 874	8100	20 425	25	The risk adjusted differentiated approach on Curriculum and Assessment for schools is being finalised with the DBE. The <b>macro guide</b> seeks to mediate this approach on the Limpopo schooling system
Mpumalanga	97 250	659	4 171	21	The province issued <b>guidelines</b> and <b>assessment</b> instructions to schools
Northern Cape	24 371	163	1158	5	Issued 3 instructions for the FET Phase to provide clarity to schools on the <b>different aspects</b> of the management of the SBA
North West	66 073	529	2627	20	Distributed and <b>mediated the framework</b> for curriculum recovery which entails: Revised school calendar; Curriculum re-organisation and trimming; revision of assessment requirements;
Western Cape	54743	512	3500	11	It was covered in the WCED Circular 18/2020 and follow-up <b>mediation sessions</b> tool place via MS Teams with Districts.

# STANDARD OPERATING PROCEDURES

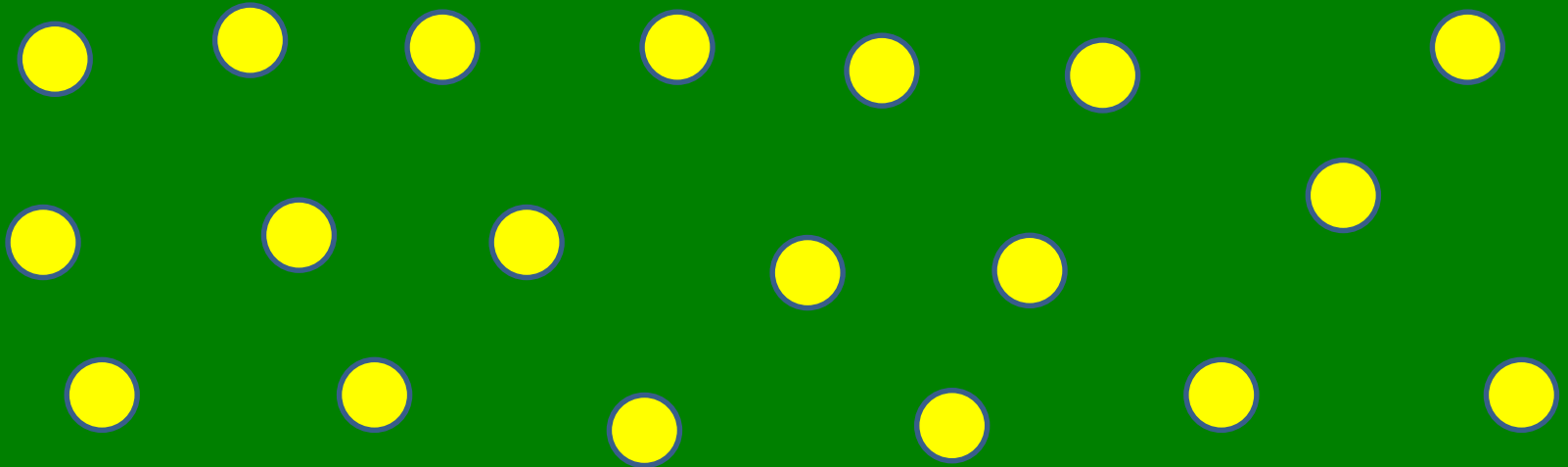
PROVINCE	HAS THE PROVINCE RECEIVED THE LATEST VERSION OF THE REVISED STANDARD OPERATING PROCEDURES (SOPS)?	MEASURES FOR UNIFORM APPLICATION
Eastern Cape	Yes	The new SOPs will be sent to schools with <b>ECDOE instruction note</b> to highlight the changes to be observed
Free State	Yes	Schools are provided with <b>all information</b> to prepare for and respond to COVID-19
Gauteng	Yes	<b>Online orientation sessions</b> on the current DBE/DoH SOPs for District officials, SMTS and SGBs on the application of the SOPs.
KwaZulu- Natal	Yes	The School Health & Safety Committees, Circuit Managers, District Health & Safety Committees will monitor <b>application/implementation</b> to ensure uniformity
Limpopo	Yes	Circuit Managers engaged principals and the District Compliance Team also <b>monitors implementation</b> .
Mpumalanga	Yes	The Department <b>distributed the latest version</b> to schools through district offices and compliance officers share information with schools and ensure implementation and compliance.
Northern Cape	Yes	<ul style="list-style-type: none"> <li>• Latest version of <b>SOPs communicated</b> to all schools via HRMS.</li> <li>• SGB and SMT members were oriented on the <b>DBE SOP</b> for teachers, support staff and learners.</li> </ul>
North West	Yes	<ul style="list-style-type: none"> <li>• <b>Capacitate</b> circuit mangers, principals and COVID-19 Task Team members on the revised Standard Operating Procedures</li> <li>• <b>Continuous monitoring</b> of implementation of revised SOPS</li> </ul>
Western Cape	Yes	The districts/CMs will, as part of their daily monitoring and support, ensure that the <b>revised DBE SOPs</b> , with our own WCED Covid-19 Guidelines are applied in a uniform manner and that schools comply with it.



# PROVISION OF PSYCHOSOCIAL SUPPORT

PROVINCE	NUMBER OF PSYCHOSOCIAL PRACTITIONERS (SOCIAL WORKERS, PSYCHOLOGISTS, THERAPISTS, COUNSELLORS ETC.)	IS THE NUMBER ADEQUATE?	PLANS IN PLACE TO INCREASE THE NUMBER OF PSYCHOSOCIAL WORKERS/SUPPORT
Eastern Cape	107	No	To work with sister Departments such as <b>health</b> and <b>social development</b>
Free State	203	No	<b>Training on Psychosocial Support Education Change Agents</b> trained at provincial level and also by DBE on psycho-social support
Gauteng	157	No	GDE is working on building its <b>Psycho-Social capacity</b> so that support can be provided to circuits and ultimately clusters directly.
KwaZulu-Natal	102	No	KZNDOE to <b>fill in the vacancies</b> of <b>school counsellors, social workers</b> and <b>psychologists</b>
Limpopo	186	No	Working with the <b>Department of Health</b>
Mpumalanga	1593	No	<ul style="list-style-type: none"> <li>• Training of <b>SBSTs</b> done,</li> <li>• <b>DBST</b> has been trained to assist with Psycho social support,</li> <li>• Involvement of <b>QLTC</b> including pastors for motivation purposes,</li> <li>• <b>Collaboration</b> with other sister departments. (<b>DSD, DOH</b>)</li> </ul>
Northern Cape	13	No	Contract appointment of <b>21 Social Workers'</b> graduates in collaboration with DSD
North West	231	No	There are plans to increase the numbers
Western Cape	298	Yes	Province has sufficient number of Psychosocial support workers.

# MARKINGS ON SCHOOL GROUNDS



# STAFF ROOM



# SOCIAL DISTANCING-SCREENS



# MONITORING SOCIAL DISTANCING

PROVINCE	MEASURES IN PLACE ON SCHOOL GROUNDS, CLASSROOMS, AND STAFF ROOMS TO MEET PHYSICAL DISTANCING REQUIREMENTS
<b>Eastern Cape</b>	<ul style="list-style-type: none"> <li>Appointed School Support Teams in each school to strengthen the monitoring of compliance of social distancing,</li> <li><b>Lines marked</b> on grounds for social distancing, <b>desks and seating</b> spaced for social distancing,</li> <li>No more than 25 learners in a classroom, consideration size of space to comply with social distancing.</li> </ul>
<b>Free State</b>	<ul style="list-style-type: none"> <li>All personnel at schools have been <b>trained</b> and the school management team are always emphasising the social distancing</li> <li>Issued a <b>guideline</b> on maintaining social distancing.</li> </ul>
<b>Gauteng</b>	<ul style="list-style-type: none"> <li>District and School Management Teams been orientated on the <b>DBE/DOH SOPs</b> to ensure that SMTs are implementing and in compliance with social distancing measures as outlined.</li> <li>Schools have placed <b>posters, painted/stuck</b> on social distancing markers in classroom on school grounds and staffrooms.</li> </ul>
<b>KwaZulu-Natal</b>	<ul style="list-style-type: none"> <li>Learners use the school <b>grounds</b> for social purposes during the breaks and Teachers voluntarily take turns to monitor them. Further, schools are using different <b>signage</b> for social distancing</li> <li>Learners are also informed about the importance of social distancing and how it helps to prevent infections</li> </ul>
<b>Limpopo</b>	<ul style="list-style-type: none"> <li>Teachers are assigned to do <b>supervisory work</b> during breaks.</li> <li>The school Compliance Officer and every teacher are charged with this responsibility.</li> </ul>
<b>Mpumalanga</b>	<ul style="list-style-type: none"> <li>The maximum of <b>20 – 25 learners</b> per classroom.</li> <li>Marked floors, desks and chairs at <b>1.5m</b> apart at all times</li> </ul>
<b>Northern Cape</b>	<ul style="list-style-type: none"> <li>Schools have done <b>physical markings</b>, have developed <b>duty rosters</b> for teachers to monitor physical distancing during breaks, Have implemented <b>staggered breaks</b>, and have opted for <b>differentiated timetabling</b> to limit number of learners on the premises</li> </ul>
<b>North West</b>	<ul style="list-style-type: none"> <li>District Officials conduct monitoring in schools. They check the <b>usage of masks</b>, they even go to the classrooms to monitor <b>social distance</b> in the classroom.</li> <li>Officials conduct monitoring every time when there is a cohort to phase. Teachers assist in monitoring.</li> </ul>
<b>Western Cape</b>	<ul style="list-style-type: none"> <li>Before the break announced by the president, all our schools were ready in terms of all the Covid-19 requirements:</li> <li><b>Screening plans;</b> Classrooms arranged according to the 1,5m physical distance; Playground duty rosters;</li> <li>Observance of feeding protocol for NSNP schools; Sufficient PPEs; TREPs</li> </ul>

# WEARING OF MASKS



# MONITORING THE USE OF MASKS

PROVINCE	MEASURES ARE IN PLACE TO MONITOR THE USE OF MASK BY LEARNERS	MECHANISMS ARE IN PLACE TO DEAL WITH NON-COMPLIANCE
Eastern Cape	Operationalising the <b>CareBuddy COVID-19 web based</b> Screening and Psychosocial Support referral Tool	Disciplinary <b>action</b> may be initiated against the offender.
Free State	The <b>Code of Conduct</b> for Learners has been reviewed to be in line with COVID -19 regulations	Disciplinary action is taken against those who do not comply.
Gauteng	Schools have been <b>orientated</b> on the DBE/DoH SOPs on <b>wearing</b> of mask and educators have also orientated all learners (including in special needs schools) on the proper use and wearing of mask and visors.	Educators, with the assistance of the <b>Youth Brigades</b> , also ensure that no person enters school without a mask (notices to this effect is also clearly visible at entrances).
KwaZulu-Natal	<ul style="list-style-type: none"> <li>The wearing of masks has been included in the <b>code of conduct</b> of the school</li> <li>A mask is required at the gate before entry but <b>disposables</b> are available in case a learner is not wearing a mask</li> </ul>	<b>Disposable mask</b> is provided for the day with a reminder to wear a mask
Limpopo	The school's <b>compliance officer</b> and the team are responsible. As well class and subject teachers.	The <b>culprit</b> is instructed to comply.
Mpumalanga	<ul style="list-style-type: none"> <li><b>Compliance officers</b> appointed to monitor the wearing of masks.</li> <li>Screeners not to allow any learner, teacher or non-teaching staff to enter the schools premises without wearing a mask (No mask. No entry)</li> <li>Monitoring and <b>creating awareness</b>.</li> </ul>	<ul style="list-style-type: none"> <li><b>Access control</b> to the schools by ensuring that all people entering the school are screened.</li> <li>Denying access to all who do not comply with the requirements.</li> </ul>
Northern Cape	<ul style="list-style-type: none"> <li><b>Screeners</b> will assist and will do continued orientation.</li> <li><b>Teachers</b> will be expected to do ground duty during breaks to monitor the use of masks by learners.</li> </ul>	<ul style="list-style-type: none"> <li>Schools will be advised to always have <b>extra disposable masks</b></li> <li>Learners arriving without a mask will be reprimanded.</li> </ul>
North West	Appointed cleaners/screeners monitor the <b>usage of masks</b> in the classrooms and in school premises.	No classroom is to be left <b>unattended</b>
Western Cape	<b>No learner is allowed</b> on school without a mask; Officials visiting schools must wear a mask at all times; The wearing of masks is <b>monitored</b> by the <b>Compliance officers</b> of the school/district and the CM.	Non-compliance must be <b>reported</b> so that the district can intervene if needed.

# LITIGATIONS

Applicant	Court	Subject of Litigation	Outcome	Date of Judgement
<p>1. Tebeila Institute of Leadership, Governance and Training.</p> <p>2. African Institute of Human Rights and Constitutional Litigation</p>	<p>Limpopo High Court</p>	<p>The Applicants applied for amongst others the following orders:</p> <ul style="list-style-type: none"> <li>• an order that the Minister’s statement on the re-opening of schools announced on <b>30 April 2020 be declared inconsistent</b> with section 28 (1)(d), section 28(2),section 10 and 11 of the Constitution in terms of section 37(3)(c) of the Constitution to the extent that it fails to protect the interest of children by exposing them to possible infection with COVID -19 outside their homes.</li> <li>• that the court direct that <b>only grade 12</b> learners be permitted to return to school in terms of the statement made by the Minister on <b>30 April 2020</b>.</li> </ul>	<p>Judge Gerrit Muller <b>dismissed</b> the case stating that Limpopo High Court had no jurisdiction over the matter. He ordered parties to cover their own costs.</p>	<p><b>5 May 2020</b></p>
<p>1. Tebeila Institute of Leadership, Governance and Training.</p> <p>2. African Institute of Human Rights and Constitutional Litigation</p>	<p>Constitutional Court</p>	<p>The Applicants sought leave to appeal directly to the Constitutional Court to address the issue of <b>reopening schools</b> as illustrated above.</p>	<p>The application was <b>dismissed</b> as there was insufficient grounds to appeal directly to the Constitutional Court</p>	<p><b>20 May 2020</b></p>



# LITIGATIONS...

Applicant	Court	Subject of Litigation	Outcome	Date of Judgement
<p>National Association of Parents in School Governance</p> <p>Congress of South African Students</p>	<p>North Gauteng High Court</p>	<p>The Respondents in this matter are The Minister COGTA, Minister Transport; Minister Trade, Industry and Competition, the President of the Republic of South Africa, Minister for Basic education and the Government of the Republic of South Africa. The Applicants brought an intervention application in an application that was brought by the Democratic Alliance to challenge certain provisions of the Disaster Management Regulations that was issued by the Department of Cooperative Governance and Traditional Affairs.</p> <p>An order is also sought that the President of the Republic of South Africa, the Minister of Basic Education and the Government of the Republic of South Africa be joined as the fourth to Sixth Respondent respectively</p> <p>The Applicants in the same papers also brought a Counter Application directing the Respondents to put in place and publish measures before any adjustments can be made to the current restrictions, including the proposed re-opening of schools:</p> <ul style="list-style-type: none"> <li>(i) A <b>clear plan</b> in relation to the delivery of food as part of the NSNP, as well as restoration of the <b>infrastructure</b> in relation to those schools which were <b>vandalized</b> during the period of the lockdown;</li> <li>(ii) Clear <b>social distancing rules</b> in place at schools that are overcrowded</li> <li>(iii) Clear <b>guidelines</b> in relation to <b>children with disabilities as well as</b> clear guidelines for risk of <b>transmission of the virus</b> at school and its possible transmission to adults living with these children; and the <b>possibility of the spread of the virus</b> as between learners and teachers;</li> <li>(iv) In respect of the <b>scholar transport system</b>, there should be clear guidelines pertaining to the social distancing, hygiene and possible fumigation of buses and taxis that are used to carry children; and</li> <li>(v) A clear an specific plan regarding public participation and consultation which must precede the <b>shift form level 4 to level 3</b></li> </ul>	<p>The matter was <b>postponed</b> indefinitely with costs reserved.</p>	<p>26 May 2020</p>

# LITIGATIONS...

Applicant	Court	Subject of Litigation	Outcome	Date of Judgement
One South Africa Movement	Constitutional Court	<p>The President was the first respondent in this matter and Minister was the fourth Respondent.</p> <p>The relief sought by the Applicants was for the reversion from Alert Level 4 to Alert level 3. Setting aside the Regulations made following the movement from Alert Level 4 to Alert Level 3. In addition they wanted to <b>prevent government from re-opening schools unless certain conditions were met.</b></p> <p>The Court found that the plans of the DBE were detailed and well considered. With regard to consultation, the Court found that the range of risk factors considered, as well as the mitigating measures put in place, the decision to open schools was a properly considered taking into account the health and safety of the broader school community.</p>	<p>The Constitutional Court concluded that the Applicants did not make out a case and the case was <b>dismissed</b> as it was not in the interest of justice to hear it at this stage. The Court made no award as to costs.</p>	5 June 2020
One South Africa Movement	North Gauteng High Court	<p>The Applicants brought an urgent application in the North Gauteng High Court (NGHC) that the decision of the NCCC and the President to move the country from lock down level 4 to 3 as well as the re-opening of <b>Schools be declared unlawful</b> and be set aside. The case was heard on <b>18 June 2020.</b></p> <p><b>They then proceeded to appeal directly to ConCourt</b> against the decision of full bench of NGHC</p>	<p>Application <b>dismissed.</b> No order as to costs.</p> <p><b>ConCourt dismissed</b> the application on 5 August as it was not in the interest of justice to hear at this stage.</p>	1 July 2020
Education Union of South Africa	North Gauteng High Court	<p>The Applicants want the decision of the Minister made on <b>9 May 2020</b> to reopen schools on <b>1 June 2020</b> be reviewed and set aside. That the <b>decision be declared unlawful, irrational, invalid and unconstitutional</b></p>	<p>The court made the following order:</p> <p>That the matter be <b>struck from the roll;</b></p> <p>That the <b>Applicant be ordered to pay the costs</b> of the Minister as well as the intervening trade union on a scale as between attorney and client.</p>	10 June 2020

# LITIGATIONS...

Applicant	Court	Subject of Litigation	Outcome	Date of Judgement
Education Union of South Africa	North Gauteng High Court	On <b>17 June 2020</b> , the Applicants made an application for leave to appeal to the Supreme Court of Appeal or alternatively to the full bench of the High Court. We have filed papers to oppose the application for leave to appeal.	<b>Awaiting decision</b> on the appeal application	
EE and others NSNP	North Gauteng High Court	<p>This urgent application was received on <b>6 June 2020</b>.</p> <p>The Minister is the first Applicant and the MECs are all cited in this matter. The Applicants assert that <b>all qualifying learners irrespective of whether they resumed class or not are entitled to receive a daily meal in terms of the NSNP</b>.</p> <p>They declare that the Minister is under a constitutional obligation to provide the daily meal to all qualifying learners to ensure proper exercise of their rights to education and enhance their learning capacity.</p> <p>Minister is <b>ordered</b> to without delay to <b>ensure that the NSNP is implemented</b> in such a manner that it provides all the qualifying learners with at least a daily meal.</p>	<b>Judgement was handed down</b> against the Department. <b>Structural Interdict</b> issued.	<b>17 July 2020</b>

# LITIGATIONS...

Applicant	Court	Subject of Litigation	Outcome	Date of Judgement
Centre for Child Law v Minister of Basic Education	NGHC	<p>The Applicant is the <b>Centre for Child Law</b>. The Applicant applied for an order that the Directions issued by the Minister on 23 June 2020 be declared to be invalid to the extent that it does not provide for the following :</p> <ul style="list-style-type: none"> <li>(i) <b>Guidelines</b> for learners with severe and profound mental disabilities, physical disabilities and learners who have epilepsy</li> <li>(ii) That the <b>direction does not provide for additional infrastructure capacity</b> to ensure social distancing for learners at special school hostels</li> <li>(iii) The Directions does not provide that learners with special education needs be provided with <b>learner teachers material and assistive devices</b></li> </ul> <p>The Department entered into negotiations with the Applicant and it was agreed that the Direction be amended to include the aspects as indicated in the application.</p>	<p><b>Settlement Agreement</b> made an order of Court on 4 August 2020</p>	

# LITIGATIONS...

Applicant	Court	Subject of Litigation	Outcome	Date of Judgement
Teibella Institute of Leadership v Minister of Basic Education	Constitutional Court	The Application was received on 25 July 2020. Applied for direct access to the Constitutional Court for an order that <b>the decision of the President and Minister to close schools is unlawful</b> and that it be set aside	<b>Dismissed</b> the application on 31 July 2020 even before we could file our papers.	31 July 2020
DA v Minister of Basic Education, President, Minister of CoGTA and Cabinet	NGHC	Application received on 30 July 2020. The Applicant applied for <b>declaratory orders that the announcement of the President on the 23 July 2020 declaring that all public schools would close on 27 July 2020 does not have any effect in law.</b> Furthermore, declaring that the failure to publish the presidential announcement in the Government Gazette be declared unconstitutional and unlawful. Lastly that speeches and press statements announcing government policy does not have force in law until they are published as regulations or directions in the Government Gazette. The Department is opposing the application. The application is set down for 11 August 2020.	The application was <b>set down for 11 August 2020.</b> However the <b>matter was removed by notice from the urgent roll</b> and a letter was addressed to the Acting Deputy Judge President for a special allocation date.	



FOOD PACKS AND TAKE AWAY COOKED



# DAILY SERVINGS



# NATIONAL SCHOOL NUTRITION PROGRAMME (NSNP)

PROVINCE	TOTAL NUMBER OF LEARNERS BENEFITING FROM NSNP	NUMBER OF LEARNERS FED IN SCHOOL	NUMBER OF LEARNERS FED STILL AT HOME	NUMBER OF LEARNERS RECEIVING FOOD PARCELS	CHALLENGES	MITIGATION
Eastern Cape	1585 633	886 603	344 496	Total included in the number of learners fed at home	Poor turn up by learners due to <b>transport challenges</b>	<b>Advocacy</b> to learners and families to collect food from school through radio and other forms of communication.
Free State	554 395	56 551	123 493	0	<b>Low turn-up</b>	Message communicated through: <b>Local Community Radio,, SMS to parents, WhatsApp</b> Group of Parents and <b>Facebook</b>
Gauteng	1 500 000	954 632	318 597	28 600	<b>Food security challenges</b> and <b>invasion</b> by communities.	Working with <b>Social development</b> to support communities and reduce the demand on schools by communities
KwaZulu-Natal	2 349 729	658 665	1 693 709	321 669	<b>Low turn-up</b>	Parents are encouraged to send their children to collect food from the schools
Limpopo	1 449 428	182 832	556 211	145737	Some learners <b>are not</b> coming to schools for food	A <b>circular</b> was sent to schools. Communication through all Limpopo <b>radio stations.</b>
Mpumalanga	915 533	124 827	629 150	0	<b>Low turn up</b>	Messages sent via <b>SMS, Radio</b> and <b>WhatsApp</b> to learners to come to school for feeding.
Northern Cape	267 427	102 592	13 898 (Cooked	238	<b>Low turn up</b>	Continued communication via <b>different platforms.</b>
North West	791 557	42 564	53 531	0	Learners coming to schools in low numbers or not coming at all.	Community radio stations , <b>bulk messages</b> and <b>group chats.</b>
Western Cape		575 494	101 451	0	Learners coming to schools in <b>low numbers</b> or not coming at all	<b>Issued letters</b> to parents to allow learners to collect food at school.



# SCHOLAR TRANSPORT

PROVINCE	LEARNERS IN TOTAL IN THE PROVINCE BENEFIT FROM LEARNER TRANSPORT IN PUBLIC ORDINARY SCHOOLS	MEASURES ARE IN PLACE TO ENSURE HEALTH, SAFETY, PHYSICAL DISTANCING	LEARNER TRANSPORT IN PUBLIC SCHOOLS FOR LEARNERS WITH SPECIAL EDUCATION NEEDS?	MODALITY AND NUMBER OF TRANSPORT FACILITIES FOR LEARNERS WITH SPECIAL EDUCATION NEED
Eastern Cape	96 441	Scholar Transport through EPWP has appointed <b>monitors</b> on the <b>pickup</b> points and schools to ensure that COVID-19 regulations are adhered to by the drivers and learners to curb the spread of the virus.	<b>2199</b> Service Providers	School <b>buses</b> and <b>mini buses</b>
Free State	1514	Operators were <b>trained</b> on COVID-19 safety measures and they were provided with COVID-19 essentials	Province transfers funds to Special schools to <b>procure</b> their own transport	<b>School buses</b>
Gauteng	160 000	<b>Youth Brigades</b> assist with COVID-19 protocols	<b>7000</b>	<b>79</b> Vehicles for abled bodied learners For specialised transport LSEN schools run their own buses
KwaZulu - Natal	62070	Learners' hands are <b>sanitised</b> ; Vehicles are <b>disinfected</b> , and learners <b>wear masks</b> while being transported to and from school	<b>6926</b>	<b>Busses</b> and <b>Midi buses</b>
Limpopo	44 000	<b>No mask no boarding, facility and learners are sanitized.</b>	Pfunani Special School (SID) has <b>100</b> learners who are participating in scholar transport.	Out of the <b>35</b> special schools, <b>9</b> were given new mini buses around 2014/5 which were bought by the Office of the Premier.
Mpumalanga	63 000	All bus operators were supplied with <b>disinfectant</b> , <b>Sanitizers</b> and all learners are wearing mask when entering the buses	<b>840</b>	Currently the department <b>don't have a special bus</b> for learners with disability
Northern Cape	44 000	<b>No mask no boarding, facility and learners are sanitized.</b>	Pfunani Special School (SID) has <b>100 learners</b> who are participating in scholar transport.	Out of the <b>35</b> special schools, <b>9</b> were given new mini buses around 2014/5 which were bought by the Office of the Premier.
North West	64 437	All vehicles are <b>cleaned</b> and <b>disinfected</b> before and after transportation of learners.	<b>Special Schools</b> are provided with <b>appropriate vehicles</b> for the nature of learners' disabilities	Special Schools are provided with <b>vehicles appropriate</b> to the nature of their learners' disabilities.
Western Cape	60 775	A <b>Standard Operational Procedure (SOP)</b> in respect of COVID-19 realities and dealing with learner safety and limits on the carrying capacity of LTS vehicles was issued to all LTS	<b>8 991</b>	



# TEACHERS WITH COMORBIDITIES

PROVINCES	NUMBER OF CONCESSIONS GRANTED	NUMBER OF REPLACEMENTS
Eastern Cape	3959	3867
Free State	1105	33
Gauteng	2558	978
KwaZulu-Natal	4475	472
Limpopo	1914	There are no replacements made thus far
Mpumalanga	2636	570
Northern Cape	597	160
North West	1105	320
Western Cape	2308	860 nominations received to date for Teacher Assistants

# SGB POSTS

PROVINCE	SGB PAID EDUCATORS IN PUBLIC SCHOOLS IN 2020	NOTES
Eastern Cape	6 730	<ul style="list-style-type: none"> <li>Majority are in <b>Quintile 4 and 5 schools</b> that are fee paying.</li> <li><b>Some SGBs would have to let them go</b> because parents have <b>not been paying</b> school fees.</li> <li>Other teacher are being <b>paid a reduced salary</b>.</li> <li>Schools still have the <b>allocated educators paid by the state</b>.</li> <li>That is why there was a <b>request to pay the school funding norms allocation early</b>.</li> </ul>
Free State	2 151	
Gauteng	10 713	
KwaZulu Natal	6 238	
Limpopo	1 675	
Mpumalanga	2 468	
Northern Cape	962	
North West	2 052	
Western Cape	6 724	
<b>TOTAL</b>	<b>39 713</b>	



# COVID-19 *Information*

# TOTAL NUMBER OF COVID – 19 CASES SINCE LOCKDOWN

PROVINCE	EDUCATORS	NON TEACHING STAFF	LEARNERS
Eastern Cape	1648	1083	270
Free State	1016	185	451
Gauteng	1896	288	809
KwaZulu Natal	2 137	301	407
Limpopo	189	12	97
Mpumalanga	441	69	301
Northern Cape	157	34	113
North West	687	41	255
Western Cape	1877	318	567
<b>National</b>	<b>10048</b>	<b>2331</b>	<b>3270</b>

# TOTAL NUMBER OF COVID – 19 FATALITIES SINCE LOCKDOWN

PROVINCE	EDUCATORS	NON TEACHING STAFF	LEARNERS
Eastern Cape	60	12	0
Free State	35	4	2
Gauteng	30	0	0
KwaZulu Natal	50	12	0
Limpopo	3	0	0
Mpumalanga	18	1	2
Northern Cape	5	0	0
North West	* 9		
Western Cape	27	11	0
<b>National</b>	<b>237</b>	<b>40</b>	<b>4</b>

\* Number includes teachers, learners and non-teaching staff





# DEVIATIONS BY SCHOOLS

PROVINCES	NUMBER OF SCHOOLS REQUESTED DEVIATION	FOR WHICH GRADES HAS DEVIATION BEEN REQUESTED?
<b>Eastern Cape</b>	<b>327</b>	<b>R-6 &amp; Gr 8-11</b>
<b>Free State</b>	<b>142</b>	<b>R-6 &amp; Gr 8-11</b>
<b>Gauteng</b>	<b>144</b>	<b>All grades</b>
<b>KwaZulu Natal</b>	<b>186</b>	<b>Grades R - 11</b>
<b>Limpopo</b>	<b>51</b>	<b>Grades R - 11</b>
<b>Mpumalanga</b>	<b>59</b>	<b>Grade R to Grade 11</b>
<b>Northern Cape</b>	<b>11</b>	<b>Grade R -11</b>
<b>North West</b>	<b>85</b>	<b>R-12</b>
<b>Western Cape</b>	<b>761</b>	<b>Gr R-11</b>
<b>National</b>	<b>1766</b>	<b>49</b>

# DEVIATIONS BY THE MEC

PROVINCES	FOR WHICH GRADES WOULD THE MEC APPLY TO THE MINISTER?	HAS THE MEC MET THE REQUIREMENTS AS STIPULATED IN THE DIRECTIONS?
<b>Eastern Cape</b>	None	No Applications
<b>Free State</b>	Grades 4,5,9 and 10	YES
<b>Gauteng</b>	Currently there is no application for deviation being considered	No Applications
<b>KwaZulu Natal</b>	None	No Applications
<b>Limpopo</b>	The planned phase return will comply with issued Directions.	
<b>Mpumalanga</b>	None	No Applications
<b>Northern Cape</b>	No deviations from the phased return of Grades as published in the Directions will be requested by the MEC.	
<b>North West</b>	None	No Applications
<b>Western Cape</b>	None	No Applications



# IMPLEMENTATION OF DIFFERENTIATED TIMETABLE

PROVINCES	NUMBER OF SCHOOLS OPTED FOR PLATOONING	NUMBER OF SCHOOLS OPTED FOR ALTERNATE WEEKS	NUMBER OF SCHOOLS OPTED FOR ALTERNATE DAYS	NUMBER OF SCHOOLS OPTED FOR HYBRID MODEL
Eastern Cape	250	369	1469	1040
Free State	38	242	486	253
Gauteng	0	309	1116	0
KwaZulu Natal	106	0	5201	427
Limpopo	88	182	2928	146
Mpumalanga	109	242	742	392
Northern Cape	18	26	292	155
North West	168	355	809	1
Western Cape	92	416	1059	0
<b>National</b>	<b>869</b>	<b>2141</b>	<b>14 102</b>	<b>2414</b>



# HOSTEL FACILITIES

PROVINCES	NUMBER OF HOSTEL FACILITIES AUDITED	HOW MANY FACILITIES ABLE TO COMPLY WITH SOCIAL DISTANCING	HOW MANY FACILITIES WILL NOT ABLE TO COMPLY WITH SOCIAL DISTANCING	MEASURES TAKEN TO ADDRESS CHALLENGES OF HOSTELS THAT COULD NOT MEET SOCIAL DISTANCING REQUIREMENTS
Eastern Cape	69	95	21	<ul style="list-style-type: none"> <li>Fewer learners allocated per <b>room/dormitory</b></li> <li><b>Learner alternate weekly</b> as per timetable for classes.</li> <li>A schedule for <b>differentiated feeding</b></li> </ul>
Free State	54	15	39	<ul style="list-style-type: none"> <li><b>Extra rooms</b> will be needed to accommodate the learners</li> <li>Schools make use of <b>Bunk-Beds</b> and <b>use of Rotation model</b> of grades in schools</li> </ul>
Gauteng	52	52	0	<ul style="list-style-type: none"> <li>Had to convert <b>recreational</b> and <b>entertainment</b> areas into accommodation in some hostels to ensure social distancing</li> </ul>
KwaZulu- Natal	95	89	6	<ul style="list-style-type: none"> <li>Use of <b>bi-weekly attendance timetable</b></li> <li><b>Table seating</b> in the <b>dining hall</b> has been rearranged</li> <li><b>Roster</b> for <b>bathing</b></li> </ul>
Limpopo	67	36	31	<ul style="list-style-type: none"> <li>The school organised <b>alternative accommodation</b> for learners</li> <li>Parents were to advise to <b>arrange transport</b></li> </ul>
Mpumalanga	48	40	8	Learners of other grades except for Gr 7 and 12 will <b>rotate</b> in the Hostels in line with their classes attendance model.
Northern Cape	70	50	20	<b>Learner Transport</b> is an option for boarders that could not be accommodated in the hostel due to social distancing protocol.
North West	61	39	22	<b>Mobile hostels provided</b> , Extra learners to be <b>accommodated and transported to another school and</b> use of alternating times at <b>Dining rooms</b> <b>Grades will alternate</b>
Western Cape	17	WCED facilities comply with the requirement	0	None, except for the fact that <b>all stops have been pulled</b> to deal with vandalized/damaged infrastructure.



# DISRUPTIONS OF SCHOOLS

PROVINCE	NUMBER OF SCHOOLS WHICH EXPERIENCED DISRUPTIONS	NATURE/TYPE/REASONS OF DISRUPTIONS	ACTIONS TAKEN TO DEAL WITH DISRUPTIONS
Eastern Cape	191	<b>Break-ins</b> ; Water availability; Classroom space; <b>Community protest</b> and water & Sanitation challenges	<ul style="list-style-type: none"> <li>Regular <b>communication</b> with Stakeholders</li> <li>Regular <b>law enforcement patrols</b></li> <li>Involvement of the <b>community police forum</b></li> <li>Solve water &amp; sanitation problems</li> </ul>
Free State	144	The disruptions caused at schools are due to the <b>COSAS</b> wanting all learners and teachers to be tested.	<ul style="list-style-type: none"> <li><b>Provjoins</b> and SAPS involvement, Engaged <b>COSAS</b> Provincial leadership</li> </ul>
Gauteng	0	No disruptions	<ul style="list-style-type: none"> <li>The communication's Chief Director and Interventions Directorate is working with <b>structures</b> to prevent <b>disruptions</b>.</li> </ul>
KwaZulu-Natal	139	Surge of <b>COVID-19</b> positive cases; <b>Water</b> and <b>sanitation</b> challenges and Non-payment of <b>screeners</b> and <b>cleaners</b>	<ul style="list-style-type: none"> <li><b>Involvement of District command council</b>, Engagement of <b>SAPS</b></li> <li>Engaging COSAS leadership; Involvement of SGBs, <b>traditional leaders</b> and <b>ward councilors</b> and <b>QLTC structures</b></li> </ul>
Limpopo	294	Disruption by <b>COSAS, SGBs</b> and <b>political parties</b> .	<ul style="list-style-type: none"> <li>Involvement of <b>PROVJOC</b> and the <b>Provincial Command Council</b></li> <li>Engagement with parents</li> </ul>
Mpumalanga	279	Business forum wanting tenders; <b>COSAS</b> and <b>SGBs</b> , Community Protests and SADTU due to raising Covid cases.	<ul style="list-style-type: none"> <li>Involvement of <b>South African Police Service</b> .</li> <li><b>Regular meetings and relevant stakeholders</b>.</li> <li><b>Gates</b> are <b>kept locked</b></li> </ul>
Northern Cape	15	<ul style="list-style-type: none"> <li><b>Community protests</b></li> <li>surge of COVID-19 cases</li> <li>Stay away of screeners</li> </ul>	<ul style="list-style-type: none"> <li>Meetings with SGBs and SMTs as well as the DoH</li> <li>Regular engagement with stakeholders through <b>QLTC Programme</b></li> </ul>
North West	90	<ul style="list-style-type: none"> <li>Alleged irregular appointment of Screeners and Cleaners</li> <li><b>COSAS</b> disruptions and Disruptions instigated by <b>SADTU</b> and <b>NEHAWU</b></li> <li>Community protests</li> </ul>	<ul style="list-style-type: none"> <li>Aggrieved Stakeholders were engaged.</li> <li><b>Involvement of QLTC structures</b></li> </ul>
Western Cape	128	<ul style="list-style-type: none"> <li><b>Unhappiness</b> that schools had to reopen, by <b>civic organizations, teacher unions, COSAS</b> and <b>SGBs</b>.</li> </ul>	<ul style="list-style-type: none"> <li>Involvement of ProvJoc and SAPS</li> <li><b>Procured</b> the services of <b>security companies</b></li> <li><b>Law enforcement</b> providing useful intelligence to the WCED and <b>Fencing of schools</b>.</li> </ul>





# QLTC PROGRAMMES

PROVINCE	NUMBER OF QLTC STRUCTURES	PLANS TO RESCUSCITATE QLTC STRUCTURES THAT ARE NOT FUNCTIONAL	PUBLIC EDUCATION PROGRAMMES CONDUCTED BY QLTC	IMPACT OF QLTC PROGRAMMES IN COMMUNITIES
Eastern Cape	2423	There is a drive from the DBE and PED to <b>revive</b> QLTC structures.	Donations and sponsorships	<ul style="list-style-type: none"> <li>Improved <b>parent participation</b> in school activities</li> <li>Increased capacity to get donations and sponsorship</li> </ul>
Free State	692	<b>All structures are functional</b>	58 Public programmes	Parents are more active in <b>participating</b> in education programmes
Gauteng	No QLTC structures operational			
KwaZulu-Natal	5629	<b>All structures are functional</b>	<b>collection</b> and submission of school work in line with KZN Circular 49 of 2020; Encourage school attendance by learners and adherence to safety protocols; <b>Re-enforce</b> effective communication between educators parents and learners to provide online support using <b>WhatsApp</b> or <b>email groups</b> ;	The participation in the recruitment of screeners and cleaners.; <b>Strengthened relations</b> between business communities and public schools by mobilizing businesses to provide <b>sanitizer dispensers</b> in some schools; <b>Strengthened relations</b> between public schools and local leadership structures, government department and civil society
Limpopo	3711 schools, 134 circuits and 10 districts	There is a drive from the DBE and PED to <b>revive</b> QLTC structures.	None	Yet to be determined.
Mpumalanga	QLTC structures established at all levels.	A structured programme is being developed to ensure that all structures are functional.	Assisting with the <b>psycho social</b> support in schools and communities	They have been less effective currently; however those engaged in moral support in schools are very effective.
Northern Cape	QLTC structure launched at all levels in 3 districts	<b>All structures are functional</b>	<b>Safeguarding</b> of schools against vandalism; Support to under performing to performing schools; Strengthen <b>parental</b> and <b>community involvement</b> .	HS School improvement from under performing to performing; <b>Reduced learner absenteeism</b> , improve learner self esteem, discipline, performance.
North West	372 229	<ul style="list-style-type: none"> <li>Current stock of <b>63 000 masks</b></li> <li>Procurement <b>process</b> of <b>144 000</b></li> </ul>	<b>Learner registration campaign</b>	<ul style="list-style-type: none"> <li>Improved learner attendance and getting back education on track</li> <li>Improve Parental involvement</li> </ul>
Western Cape	The WCED does not have <b>QLTC structures</b> . The identified activities as per the QLTC document have been fused into the normal operational and strategic functions of the department. E.g. the T2P Strategy focuses on the mindset/attitude/value systems of everybody in the school community (learner; teacher; management; SGB; parent)			



# VANDALISED SCHOOLS

PROVINCES	NUMBER OF SCHOOLS	MEASURES TO DEAL WITH VANDALISM IN SCHOOLS	PROGRESS OF REPAIRS
Eastern Cape	576	<ul style="list-style-type: none"> <li>Hiring night-watchmen,</li> <li>Use armed response security and Installing surveillance cameras,</li> </ul>	Out of 576 schools vandalised, 263 have been repaired, 236 are in the process of being fixed. 57 schools are awaiting approvals for fixing. Damaged area in 20 schools not used.
Free State	80	<ul style="list-style-type: none"> <li>Use <b>private security</b> companies</li> <li>Involvement of <b>ProvJoint</b></li> </ul>	By 26 August, 80 schools were vandalised and 50 repaired. 30 are still in the process of repairs.
Gauteng	355	<ul style="list-style-type: none"> <li><b>Patrollers</b> deployed at no-fee paying schools , All no-fee paying linked to local police stations</li> <li>Private security guards used</li> </ul>	240 schools out of the 355 schools are complete.
KwaZulu- Natal	467	<ul style="list-style-type: none"> <li>The School Governing Body, Principals and SMT to be more <b>involved in the school security</b></li> <li>Community Leader involvement to be strengthened</li> <li>The Department continues to <b>roll-out the fencing</b> programme throughout the Province</li> </ul>	467 schools vandalized and 401 repaired with 66 still in progress.
Limpopo	175	<ul style="list-style-type: none"> <li><b>Community vigilance</b> improved</li> <li>All schools are linked to the nearest <b>SAPS and Involvement of PROVJOC</b></li> </ul>	Repairs <b>completed</b> in all schools.
Mpumalanga	157	<ul style="list-style-type: none"> <li>Involvement of <b>community leaders, SGBs and QLTC</b></li> <li>Working with <b>Community Policing Forums and SAPS and appointed security guards</b></li> </ul>	73 schools has managed to fix the damages
Northern Cape	107	<ul style="list-style-type: none"> <li>Regular <b>patrols</b> by SAPS</li> <li>Intervention of <b>Provjoint</b></li> </ul>	Of the 107 schools that have been vandalized, work at 69 schools are now completed and 38 is in progress.
North West	129	<ul style="list-style-type: none"> <li>Consider <b>appointment of security</b> for all Public Schools, with township schools as priority</li> </ul>	Out of 129, 120 were repaired. Repair on 9 schools in progress.
Western Cape	244	<ul style="list-style-type: none"> <li>Involvement of <b>Provjoint</b> and <b>SAPS</b></li> <li><b>Installation of fencing</b></li> <li>Random <b>armed response patrols</b>.</li> </ul>	Functionality has been restored at all affected schools 60

# PROCUREMENT OF COVID 19 ESSENTIALS



# PROCUREMENT OF COVID 19 ESSENTIALS

PROVINCE	NUMBER OF LEARNERS REQUIRING COVID-19 ESSENTIALS	DATE OF PROCUREMENT	DATE OF DELIVERY
<b>Eastern Cape</b>	All schools have been issued with the minimum required package of PPEs (3 months stock).	No procurement currently	No current deliveries
<b>Free State</b>	<b>307 375</b>	Through provincial treasury	Before <b>24 August 2020</b>
<b>Gauteng</b>	All the PPEs <b>masks, sanitisers</b> and related items were procured and delivered to schools	The focus amongst others will be on replenishment on items such as hand sanitiser, liquid soap as well as surface cleaner.	PPE for Grades 4,5, 8 and 9 was delivered in line with the just-in-time approach was concluded by <b>21 August 2020</b> for all schools in all districts
<b>KwaZulu Natal</b>	<b>4 964 832</b> Cloth masks	In Progress	<b>24<sup>th</sup> August Onwards</b>
<b>Limpopo</b>	<b>274 569</b> Cloth masks	<b>17 August 2020</b>	<b>28 August 2020</b>
<b>Mpumalanga</b>	<b>213 978</b> learners need masks	24 August	Before 31 August 2020
<b>Northern Cape</b>	<b>50 490</b> for <b>Grades 5 and 8</b>	Received from suppliers	<b>26 August 2020</b>
<b>North West</b>	<b>372 229 (298 168)</b>	<b>17 August 2020</b>	<b>28 August 2020</b>
<b>Western Cape</b>	The <b>delivery schedule</b> is indicative of the balance of PPE being delivered as all schools had already received an initial order of PPEs to keep the school going. The hand sanitizer and bleach currently being delivered is the supplementary order as the contractor has already delivered these items in full (based on original orders placed). <sup>62</sup>		

# PROCUREMENT OF COVID 19 ESSENTIALS

PROVINCE	HOW MANY MASKS WERE RETURNED TO THE SUPPLIERS AS A RESULT OF POOR QUALITY?	WHAT IS THE VALUE OF THE RETURNED MASKS	HOW MANY SCHOOLS EXPERIENCED SHORTAGE OF MASKS FOR NEW GRADES?
<b>Eastern Cape</b>	0	R0	0
<b>Free State</b>	0	R0	<b>307 375</b>
<b>Gauteng</b>	0	R0	0
<b>KwaZulu Natal</b>	<b>26000</b>	<b>R62 400</b>	0
<b>Limpopo</b>	<b>54 557</b>	<b>R876 069</b>	0
<b>Mpumalanga</b>	<b>2244</b>	<b>R56 100</b>	Additional 271 000 masks delivered on 24 August
<b>Northern Cape</b>	0	R0	0
<b>North West</b>	0	R0	0
<b>Western Cape</b>	0	R0 <sup>63</sup>	0

# PROCUREMENT OF COVID 19 ESSENTIALS

PROVINCE	MEASURES IN PLACE TO ENSURE THAT SCHOOL DON'T RUN OUT OF COVID-19 ESSENTIALS	PLANS FOR SPECIAL SCHOOLS IN TERMS OF COVID-19 ESSENTIALS
Eastern Cape	<b>mop-up round</b> of supply of PPEs to schools with shortages following which schools will procure their own PPE from own budget. <b>40% (2048)</b> of schools will receive additional PPE as part of the <b>mop-up plan</b> .	Procurement done <b>same as</b> that of <b>Public Ordinary Schools</b> .
Free State	<ul style="list-style-type: none"> <li>• <b>Top Up</b> is done in advance in preparation of the grades to be phased in</li> <li>• The Procurement Section follows up on <b>shortages Bi-weekly</b> from schools</li> <li>• Monitoring on the usage of PPEs is done</li> </ul>	<ul style="list-style-type: none"> <li>• <b>Top Up</b> is done in advance in preparation of the grades to be phased in</li> <li>• The Procurement Section follows up on <b>shortages Bi-weekly</b> from schools</li> <li>• Monitoring on the <b>usage of PPEs</b> is done</li> </ul>
Gauteng	Monthly <b>replenishment</b> of stock of COVID-19 essentials to schools or on demand from schools	They receive the same delivery of public ordinary schools as well monthly replenishment and specialised PPEs
KwaZulu-Natal	Districts are required to submit monthly stock reports which guide the Department on possible shortages and trigger creation of additions orders	Special Schools have been supplied with <b>Coveralls, Visors, disposable gloves</b> and <b>plastic aprons</b> . Special schools are also included in the new procurement plan for these items
Limpopo	<b>Outstanding quantities</b> were <b>re-awarded</b> and delivery has been completed.	Specials Schools have already been provided with COVID-19 Essentials such as <b>Face Shields (Visors), Cloth Masks, Sanitisers &amp; Thermometers</b>
Mpumalanga	Procurement requisitions are made with correct numbers of learners and educators. A <b>replenishment plan</b> has been put in place to trigger early order placement to avoid schools running out of essentials.	Special schools are included in the District COVID-19 plan of PPEs supply and they are already benefiting in terms of <b>Face shields, Sanitizers, Toilet rolls stands and Toilet papers</b> .
Northern Cape	<b>Telephonic enquiries</b> are regularly made	Regular check ups and Regular top-ups of PPE
North West	<b>Replenishment</b> dates of COVID 19 essentials except masks are communicated by schools to the districts	<b>Procurement</b> done <b>same as</b> that of Public Ordinary Schools.
Western Cape	None as were packed at <b>Maitland</b> .	



# COVID - 19 ESSENTIALS INTERIM AUDIT

PROVINCE	USE OF DATA AND EMIS FOR PROCUREMENT	DEALING WITH DEFICIENCIES IN QUALITY	GUIDELINES FOR DISTRICTS AND SCHOOLS TO VERIFY QUALITY OF PRODUCTS
Eastern Cape	Use <b>EMIS</b> to get learner data	<ul style="list-style-type: none"> <li>The Supplies returned to Service Providers</li> <li>No payment for such goods</li> <li>Black listing of such Providers</li> </ul>	<b>Follow DoH Guidelines</b>
Free State	All the statistics used to procure COVID-19 essentials were taken from <b>SASAMS</b> . Every Monday after the Friday submission EMIS provides feedback on Errors and Omissions	Provincial Treasury, together with professionals from the Department of Health, were responsible for the testing of the PPE Essentials for <b>compliance</b> . Sent some <b>samples</b> to the <b>Central University of Technology</b> for further testing	The Departmental SCM Unit officials will engage the <b>Department of Health</b> on the expected quality requirements that PPEs must comply with.
Gauteng	The department made use of <b>10-Day Headcount</b> from <b>EMIS</b> to made an assessment of the needs.	The Quality of the PPEs procured was initially verified by the <b>Gauteng Department of Health</b> as the procuring department; The GDE <b>performed limited testing</b> through distributing agent.; The National Department also has an <b>external verification process</b> .	Guidelines are based an <b>audit</b> by the <b>external provider</b> and <b>specifications</b> were <b>developed</b> and <b>disseminated</b>
KwaZulu-Natal	The provision of COVID 19 essentials is based on the data from Education Management Information System ( <b>EMIS</b> )	The Department <b>relies</b> on <b>school</b> and <b>districts</b> to report deficient items. These are replaced as and when they are reports and suppliers will be debited on their order or a debt will be raised	The districts have been provided with <b>necessary forms</b> to report <b>shortages</b> , under delivery and quality of items.
Limpopo	The Department is using the <b>SASAMS data</b> to order Covid-19 essentials for schools.	The District Directors and Circuit Managers were informed to <b>return</b> any face cloth masks that do not comply to the specification.	Procurement Checklist; Warehousing Procedure Management; Delivery Confirmation Checklist; Payment Advice Checklist
Mpumalanga	The procurement and distribution is based on the data available from <b>EMIS and PERSAL</b>	Supplies are <b>returned</b> to the supplier for replacement or order is cancelled	Guidance provided only as it relates to Masks
Northern Cape	Used the approved survey for Quarter 1 that was uploaded into <b>LURITS</b>	Commissioned the <b>testing</b> of some of the <b>hand sanitizers</b>	<b>Not as yet</b>
North West	Data regarding number of learners and schools to determine the demand and provision of COVID-19 Essentials has been taken from <b>EMIS</b> .	Products with deficiencies on the quality were <b>sent back</b> to <b>service providers</b> with the agreement to supply the right quality at a particular date, failing which, the order would be cancelled	The <b>guidelines</b> are <b>still being developed</b> and would be provided to districts and schools as soon as they are finalised.
Western Cape	Use the <b>CEMIS</b> to get learner information	The province <b>returned</b> the masks to the service provider and the service provider replaced the masks <sup>65</sup>	<b>Guidelines</b> issued to schools and meetings with districts to follow up on compliance.

# COVID - 19 ESSENTIALS INTERIM AUDIT

PROVINCE	NON -COMPLIANCE WITH NATIONAL TREASURY INSTRUCTION NOTES	NON- COMPLIANCE WITH SCM LEGISLATION	ADDRESSING INTERNAL CONTROL WEAKNESSES
Eastern Cape	Procurement by Provincial Treasury	Procurement by Provincial Treasury	Procurement by Provincial Treasury
Free State	Procurement by Provincial Treasury	The Department has Bid Evaluation (BEC) and Bid Adjudication (BAC) committees that are staffed with <b>competent senior managers</b> to ensure complete compliance.	<ul style="list-style-type: none"> <li>• <b>Segregation</b> of duties is strictly adhered to.</li> <li>• Cost centres verify delivered goods and services before payment is processed</li> <li>• <b>Invoices</b> are also checked on the LOGIS system to avoid duplicate payments</li> </ul>
Gauteng	The department <b>did not procure</b> directly but through the department of Health	The department did not procure directly but through the department of Health	Based on the current audit reviews, <b>no weaknesses</b> have been identified.
KwaZulu-Natal	The findings of the AG are <b>still being investigated</b> on the initial procurement of <b>R 35 million</b> before lockdown	This will be <b>dependent</b> on the <b>findings</b> of the investigations and the seriousness of the offenses	<b>The</b> Department has established a <b>panel of service providers</b> to deliver COVID 19 essential items for the next six months to ensure quick response in dealing with ordering and delivery of items.
Limpopo	<b>Suppliers that did not comply</b> with delivery terms and conditions were given notices for rectification of non-compliance and then complied accordingly.	Suppliers that did not comply with delivery terms and conditions were <b>given notices</b> for rectification of <b>non-compliance</b> and then complied accordingly.	<b>Procurement Checklist;</b> Warehousing Procedure Management; Delivery Confirmation Checklist; Payment Advice Checklist
Mpumalanga	The Department <b>has not experienced non-compliance</b> to National Disaster Management Instruction notes	The Department is utilising the <b>existing contract</b> of the Department of Health for almost all our PPE's.	The Department has developed and implemented <b>covid-19 project implementation plan</b> , appointed a team and allocated responsibilities to team members
Northern Cape	<b>Internal Audit</b> is assisting with <b>oversight</b> . Only housekeeping findings have been raised by AGSA	<b>No non compliances</b> have been identified	<b>Internal Audit is assisting with oversight. The CFO reviews all procurement documents</b>
North West	A <b>checklist</b> has been developed that has incorporated all the National Treasury Disaster Management Instruction Notes requirements and all SCM regulations.	Non compliance is recorded in the non <b>compliance register, investigations</b> in that regard are underway.	A <b>checklist</b> has been developed that has incorporated all the National Treasury Disaster Management Instruction Notes requirements and all SCM regulations.
Western Cape	Followed the <b>Provincial Treasury</b> guidelines	<b>No non compliances</b> have been identified	No internal weaknesses identified

A man in a red t-shirt and blue shorts is pushing a large, heavy, brown rock in a hallway. The rock has text on it. The hallway has a drop ceiling with a light fixture and windows on the right side.

**IT ALWAYS  
SEEMS  
IMPOSSIBLE  
UNTIL IT'S DONE**

**- Nelson Mandela -**

