



Western Cape  
Government

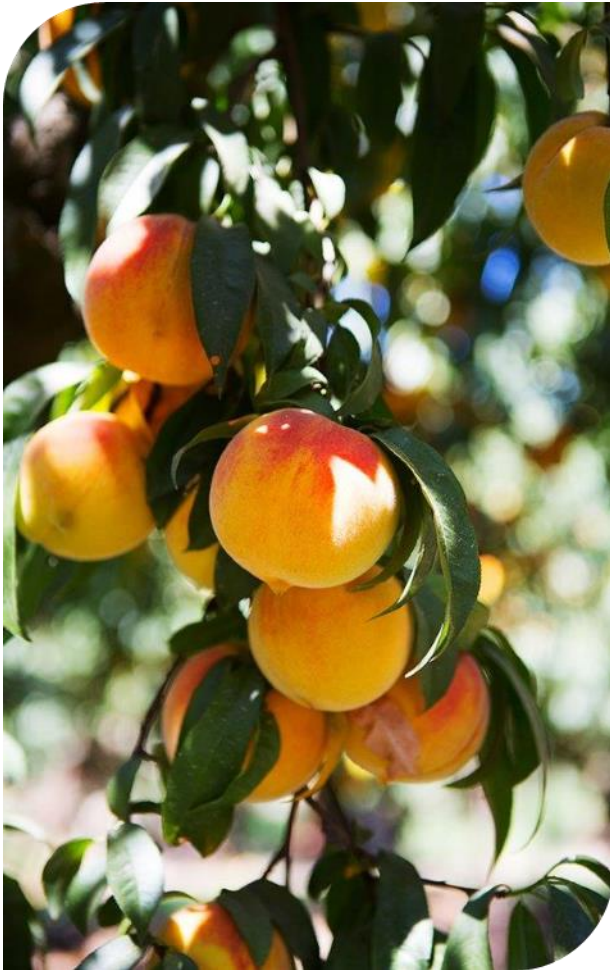
# BRIEFING TO THE PORTFOLIO COMMITTEE

PLANTING SEASON – STATE OF READINESS

Cape Town

Ms Joyene Isaacs

05 November 2019



- **CONTEXT**

- **IMPACT OF DROUGHT**

- **BUSINESS MODEL**

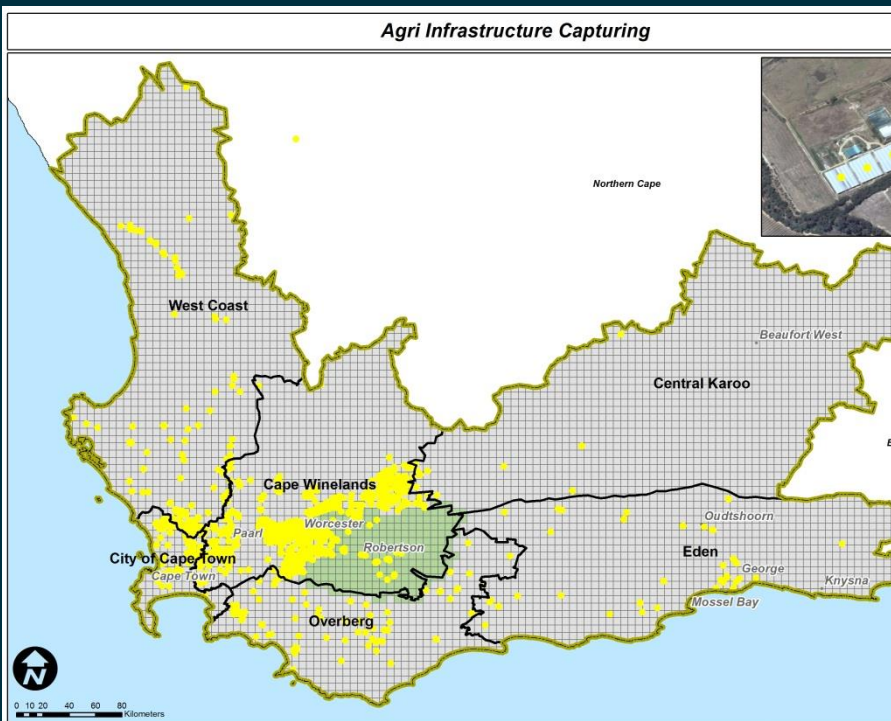
- **HA PLANTED**

- **CONCLUSION**

# Context



# Agri-Infrastructure - Fly over (2013)

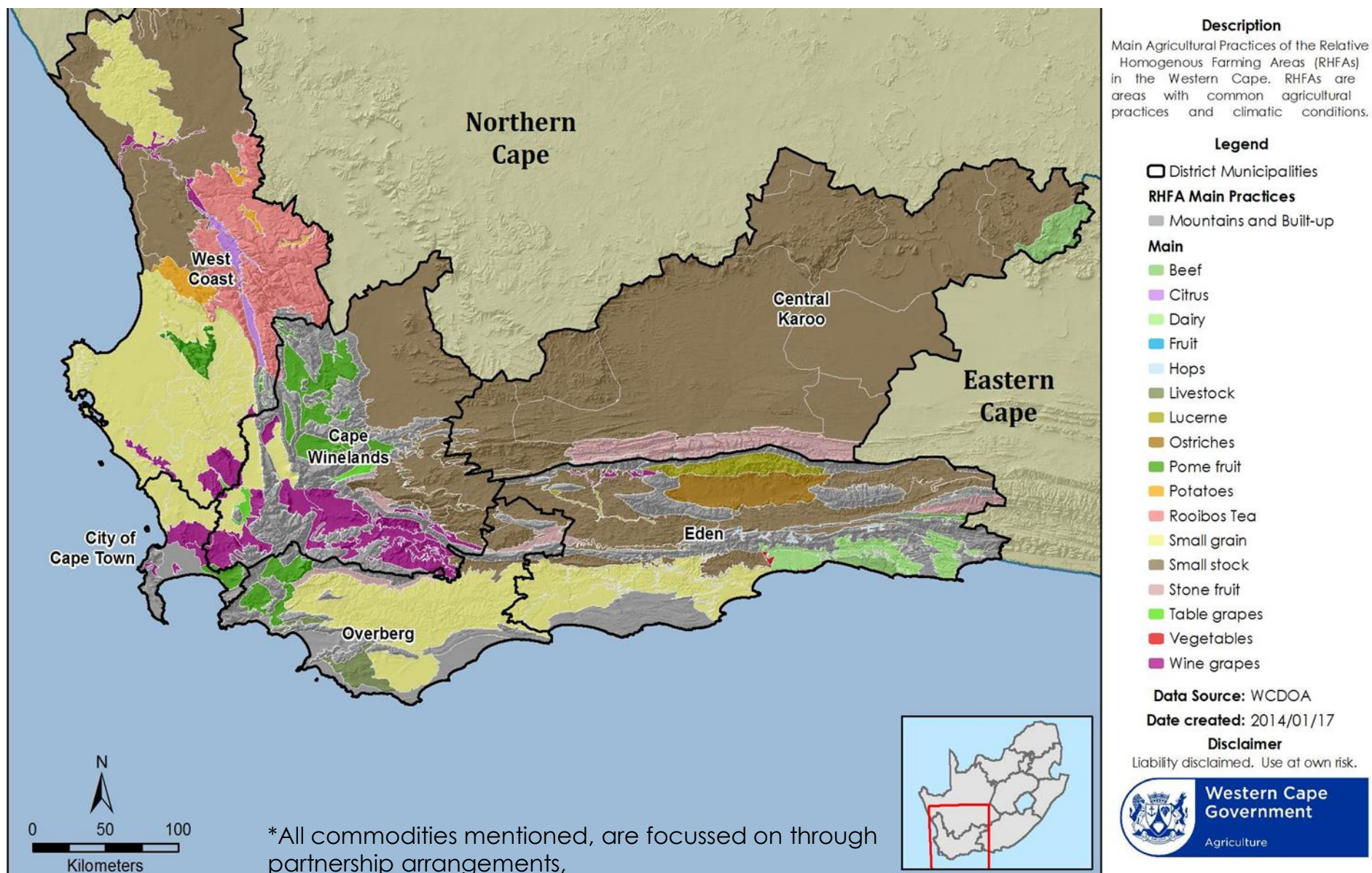


INFRASTRUCTURE TYPE	WESTERN CAPE
Abattoirs - red meat	54
Abattoirs - white meat	17
Agro processing plants, Cool chain facilities, Fruit Packers and Millers	363
Airfields	166
Chicken batteries - broilers	1 061
Chicken batteries - layers	555
Chicken batteries (free range)	8
Chicken hatcheries	2
Crush pens and dip tanks	308
Crush pens	3 000
Dairies	760
Dams	31 492
Feedlots - beef	44
Feedlots - pigs	6
Feedlots - sheep	38
Homesteads - labour	5 565
Homesteads - owner / manager	13 860
Nurseries	137
Packhouses	619
Piggeries	55
Shade netting	1 035
Silos and silo bags	145
Tunnels	4 704
<b>TOTAL</b>	<b>63 994</b>

\*Updated in 2016/17



# Agricultural potential



# Area Summary ORCHARDS

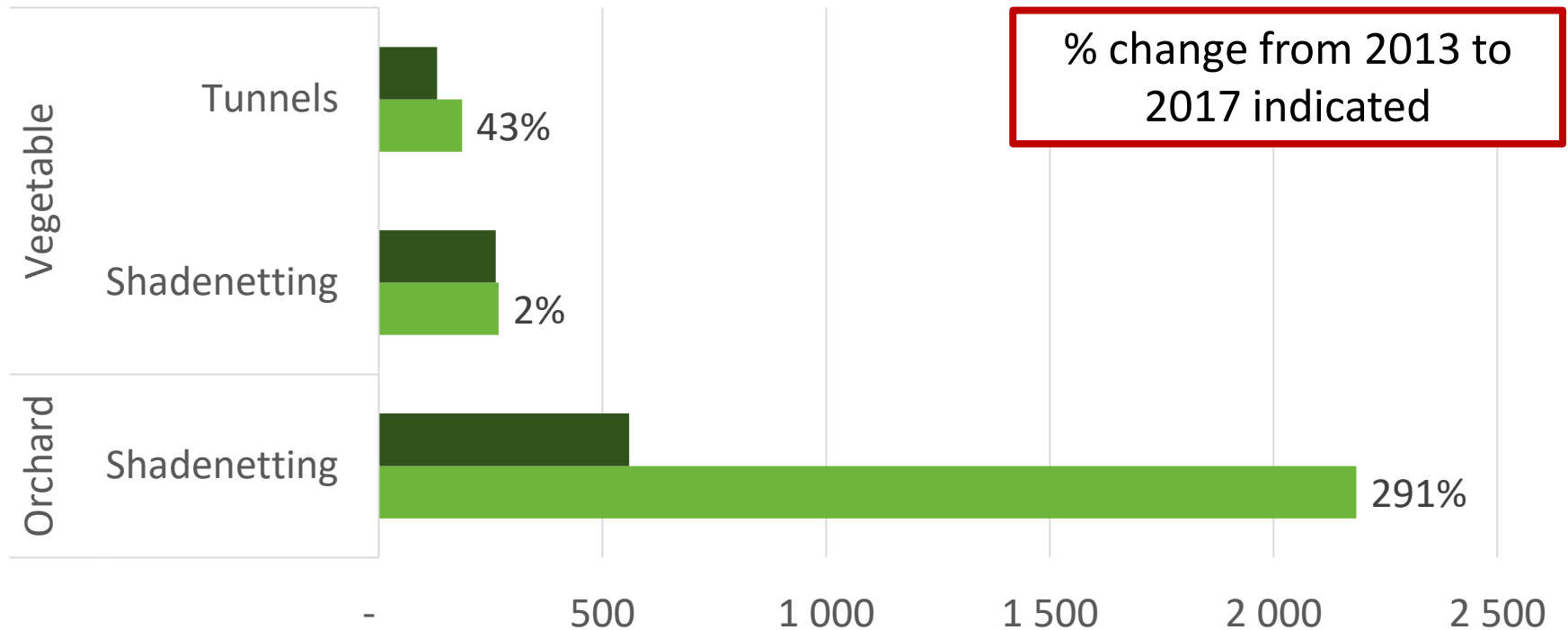
	2013	2017	Absolute change	% change
Berries	913	1 212	299	40.5%
Citrus	12 137	16 354	4 216	39.1%
Exotics	1 649	1 581	-68	-1.3%
Nuts	645	1 155	510	76.2%
Olives	6 167	6 207	40	0.6%
Pome fruit	32 371	32 231	-140	-0.5%
Stone fruit	18 433	16 900	-1 533	-8.4%
Sub-Tropical	1 166	1 407	241	31.5%
Table Grapes	12 863	13 095	233	1.8%
Wine Grapes	108 070	91 221	-16 848	-15.6%
<b>Grand Total</b>	<b>193 163</b>	<b>181 233</b>	<b>-11 930</b>	<b>-6.2%</b>

# Area Summary

## GRAINS & OILSEEDS

	2013	2017	%-change
FALLOW	102 044	142 465	40%
LUPINES	38 468	7 299	-81%
LUCERNE	407 306	442 069	9%
MAIZE	4 506	4 016	-11%
SMALL GRAINS GRAZING (typically oats)	190 341	201 554	6%
SORGHUM	1	1	-17%
BARLEY	70 238	86 670	23%
TRITICALE	9 290	4 113	-56%
WHEAT	312 561	338 588	8%
CANOLA	71 865	90 523	26%
SOYABEANS	34	769	2176%
SUNFLOWER	4	61	1292%
<b>Grand Total</b>	<b>1 688 892</b>	<b>1 752 935</b>	

# Capital Investment



	Orchard	Vegetable	
	Shadenetting	Shadenetting	Tunnels
2013	559	261	130
2017	2 185	267	186



# Key Messages from flyover

---

- Clear shift into higher-valued and exotic irrigation crops
- Less orchards under irrigation but shift into crops with higher water demand per hectare (e.g. citrus vs wine grapes)
- Significant increase in shade netting resulting in more efficient water use
- Vegetable area and employment severely affected by the 2017 drought
- Total Western Cape mix of field crops (cash crops, fodder, fallow) remained relatively constant, but regional differences evident
  - Swartland: shift to cash crops and fallow
  - Southern Cape: shift to fodder
- Increase of intensive livestock operations (Poultry & Feedlots)

# Impact of drought and support to farmers



# The “Disaster” chart – increase of disaster over last 5 years

Disasters	2012	2013	2014	2015	2016	2017	2018	2019
Floods	X	X	X					X
Drought				X	X	X	X	X
Fire					X	X	X	X
Other (Avian & swine flu, beetles etc.)	X			X	X	X	X	

# Areas in the Western Cape receiving drought (fodder) support

DROUGHT EXPENDITURE									
	2018	2019	2019	2019	2019	2019	2019	2019	2019
	December	JANUARY	FEBRUARY	MARCH	APRIL	MAY	JUNE	JULY	AUGUST
<b>CENTRAL KAROO</b>									
Voucher Amount	R7 846 212,43	R8 425 042,16	R 8 554 512,06	R 8 982 048,22	R8 942 584,00	R 8 941 892,88	R 8 800 713,60	R 8 702 116,64	R 4 389 294,64
No. of commercial farmers supported	362	368	373	392	393	390	396	398	399
No. of smallholder farmers supported	225	225	237	239	239	234	230	235	235
<b>Total number of farmers supported</b>	<b>587</b>	<b>593</b>	<b>610</b>	<b>631</b>	<b>632</b>	<b>624</b>	<b>626</b>	<b>633</b>	<b>634</b>
<b>CAPE WINLANDS</b>									
Voucher Amount		R1 127 797,60	R 440 215,46	R 525 032,42	R 434 822,18	R 552 260,00	R 415 318,92	R 496 656,64	R 3 989,84
No. of commercial farmers supported		66	36	40	35	41	33	37	0
No. of smallholder farmers supported		66	26	25	24	26	25	29	1
<b>Total number of farmers supported</b>	<b>0</b>	<b>132</b>	<b>62</b>	<b>65</b>	<b>59</b>	<b>67</b>	<b>58</b>	<b>66</b>	<b>1</b>
<b>WEST COAST</b>									
Voucher Amount	R4 447 999,14	R8 646 396,26	R 4 412 908,90	R 7 626 311,62	R 4 812 037,06	R 7 951 460,26	R 5 030 778,66	R 8 339 352,42	R 2 511 704,77
No. of commercial farmers supported	166	346	168	302	180	305	187	327	184
No. of smallholder farmers supported	275	493	256	478	267	488	267	492	268
<b>Total number of farmers supported</b>	<b>441</b>	<b>839</b>	<b>424</b>	<b>780</b>	<b>447</b>	<b>793</b>	<b>454</b>	<b>819</b>	<b>452</b>
<b>EDEN</b>									
Voucher Amount	R55 637,28	R7 915 905,31	R 4 202 280,96	R 4 317 252,80	R 7 048 245,28	R 4 531 822,24	R 3 950 696,32	R 3 533 870,40	R 1 731 289,52
No. of commercial farmers supported	2	362	177	182	293	179	158	165	173
No. of smallholder farmers supported	4	341	245	269	306	242	269	177	279
<b>Total number of farmers supported</b>	<b>6</b>	<b>703</b>	<b>422</b>	<b>451</b>	<b>599</b>	<b>421</b>	<b>427</b>	<b>342</b>	<b>452</b>
<b>Grand Total (Rand Value)</b>	<b>R12 349 848,85</b>	<b>R26 144 745,01</b>	<b>R17 609 917,38</b>	<b>R21 450 645,06</b>	<b>R21 237 688,52</b>	<b>R21 977 435,38</b>	<b>R18 197 507,50</b>	<b>R21 071 996,10</b>	<b>R8 636 278,77</b>
<b>Grand Total (Farmers supported)</b>	<b>1034</b>	<b>2267</b>	<b>1518</b>	<b>1927</b>	<b>1737</b>	<b>1905</b>	<b>1565</b>	<b>1860</b>	<b>1539</b>

All Districts received up until January. After the Disaster Risk assessment support changed as certain areas have experienced recovery and these areas have been removed.

Critical areas only

\*Small print but details needed to be presented

# ***Kannaland drought intervention***

## **Situation:**

- Worst drought in more than 100 years
- Fourth consecutive year - predicted to continue.
- 70% harvest loss - fruit farmers
- 100% Lucerne harvest loss) - 2300 ha
- Orchards and vineyards - died off or had to be uprooted
- 50% of the dairies has stopped milking and sold off their herds

## **Intervention**

- 200 livestock farmers receive monthly fodder support
- August 2019 - interventions include:
  - alien clearing
  - removal of dead biomass in riparian zones
  - drilling and equipping of boreholes
  - fencing
- Training workshops (first aid, mix farming practices, herbicide application and
- 250 temporary jobs - 40/40/20 principle
- Three training workshops (2 first aid and mix farming practices) - 70 trained
- EPWP wage of R120 per day

# Drought intervention plans

---

- Duplicate the Kannaland projects in other areas
- Water infrastructure repairs and upgrades – water saving and job creation
- Rainwater harvesting tanks – installation by community
- Alien clearing
- Fencing – veld management
- Dead biomass removal in water courses
- Preventive maintenance of Lower Olifantsdoorn River canal



# Drought mitigation: Western Cape

- Preventative maintenance of the Lower Olifants River Canal – prevent water losses
- Removal of invasive alien plants in partnership with private land-owners – prevent water losses and improve agro-ecosystem functioning
- Fencing – improve veld management
- Awareness raising and capacity building – sustainable agricultural practices
- Rural and Agricultural Sector Support Committee – representatives of industry and government
- SmartAgric Plan
- Early warning system - bi-annual drought assessments – monitoring of veld condition
- Removal of dead biomass in water courses

# Drought funding

## 2016/17 DROUGHT ALLOCATION

Project	Allocated	Funder	Spent	% Spent	Balance	Committed
Fodder support	R 4 804 000	National	R 4 804 000	100%	R 0	
Relief for commercial farmers	R 16 100 000	R3,6mil (part of R5.1) R1 mil Agri WC R11,5mil (half of R23mil)	R 16 100 000	100%	R 0	
Relief for small farmers	R 18 500 000	R4 mil FSD (DoA) R2 mil FSD (DoA) R1 mil Agri WC R11,5mil (half of R23mil)	R 18 500 000	100%	R 0	
Livelihood payments	R 1 500 000	R1.5 mil (part of R5.1)	R 1 500 000	100%	R 0	
Fodder support (End 16/17)	R 31 689 000	Departmental Reprioritisation	R 31 689 000	100%	R 0	

## 2017/18 DROUGHT ALLOCATION

Type of support	Allocated	Funder	Spent	% Spent	Balance	Committed
Fodder support	R 40 000 000	NDMC/PDMC	R 40 000 000	100%	R 0	
Fodder support	R 12 572 000	Voted Funds - Adjustment Budget	R 12 572 000	100%	R 0	
Fodder support	R 2 795 000	Voted Funds - Adjustment Budget	R 2 795 000	100%	R 0	

# Drought funding

## 2018/19 DROUGHT ALLOCATION

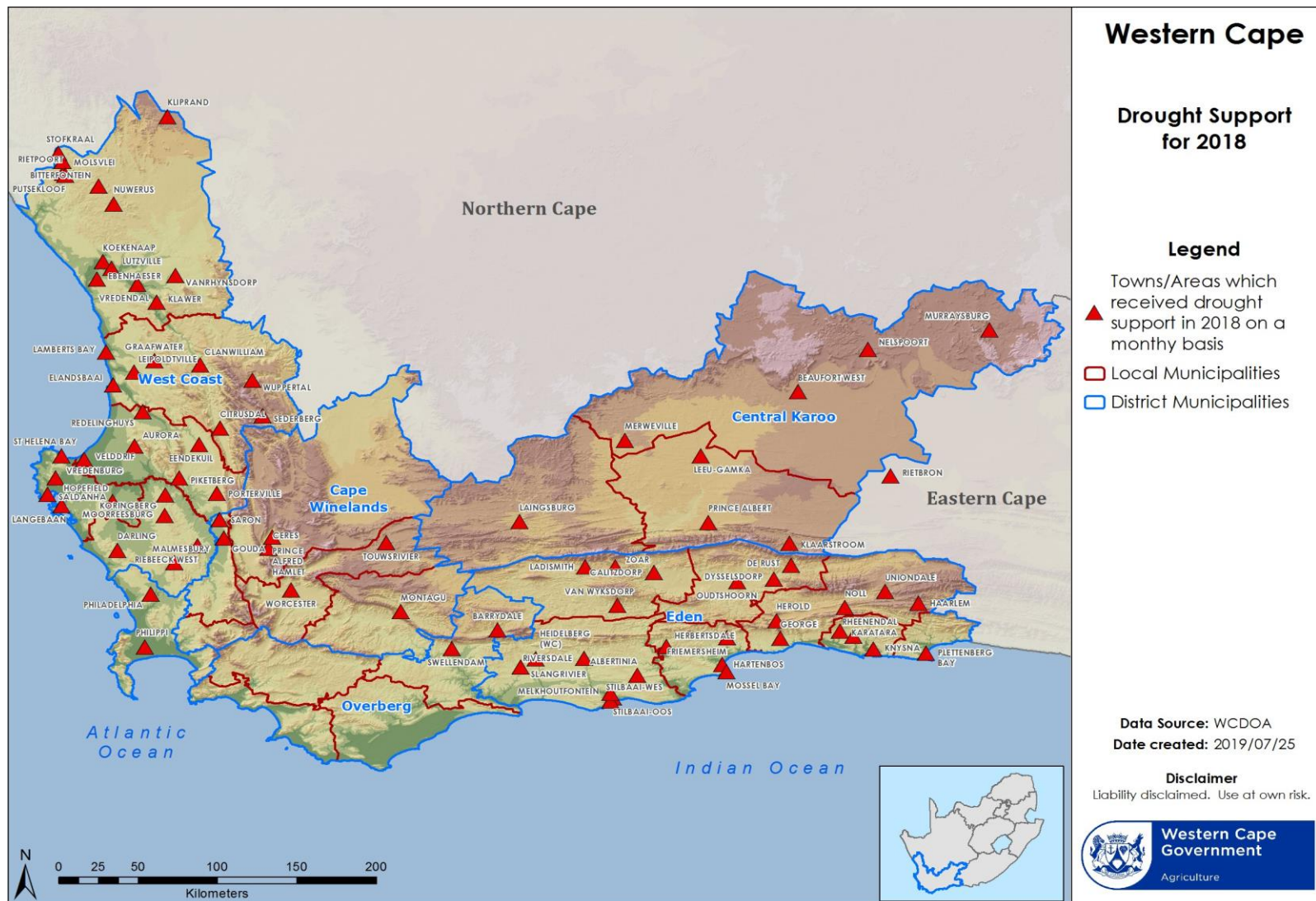
Type of support	Allocated	Funder	Spent	% Spent	Balance	Committed
Fodder support	R 38 000 000	NDMC/PDMC	R 38 000 000	100%	R 0	
Fodder support	R 3 750 000	Voted Funds – Disaster Earmarked funding	R 3 750 000	100%	R 0	
Fodder support	R 170 000 000	NDMC/PDMC	R 170 000 000	100%	R 0	
Fodder support	R 1 313 000	DoA roll over funds	R 1 313 000	100%	R0	

## 2018/19 DROUGHT ALLOCATION

Fodder support	R 7 000 000	Voted Funds -Disaster Earmarked funding	R 7 000 000	100%	R 0	
----------------	-------------	--	-------------	------	-----	--

# Drought support in the Western Cape (first 6 months)- 2018

More than 2 500 farmers receive fodder support every alternative month to approximately R26 million per run

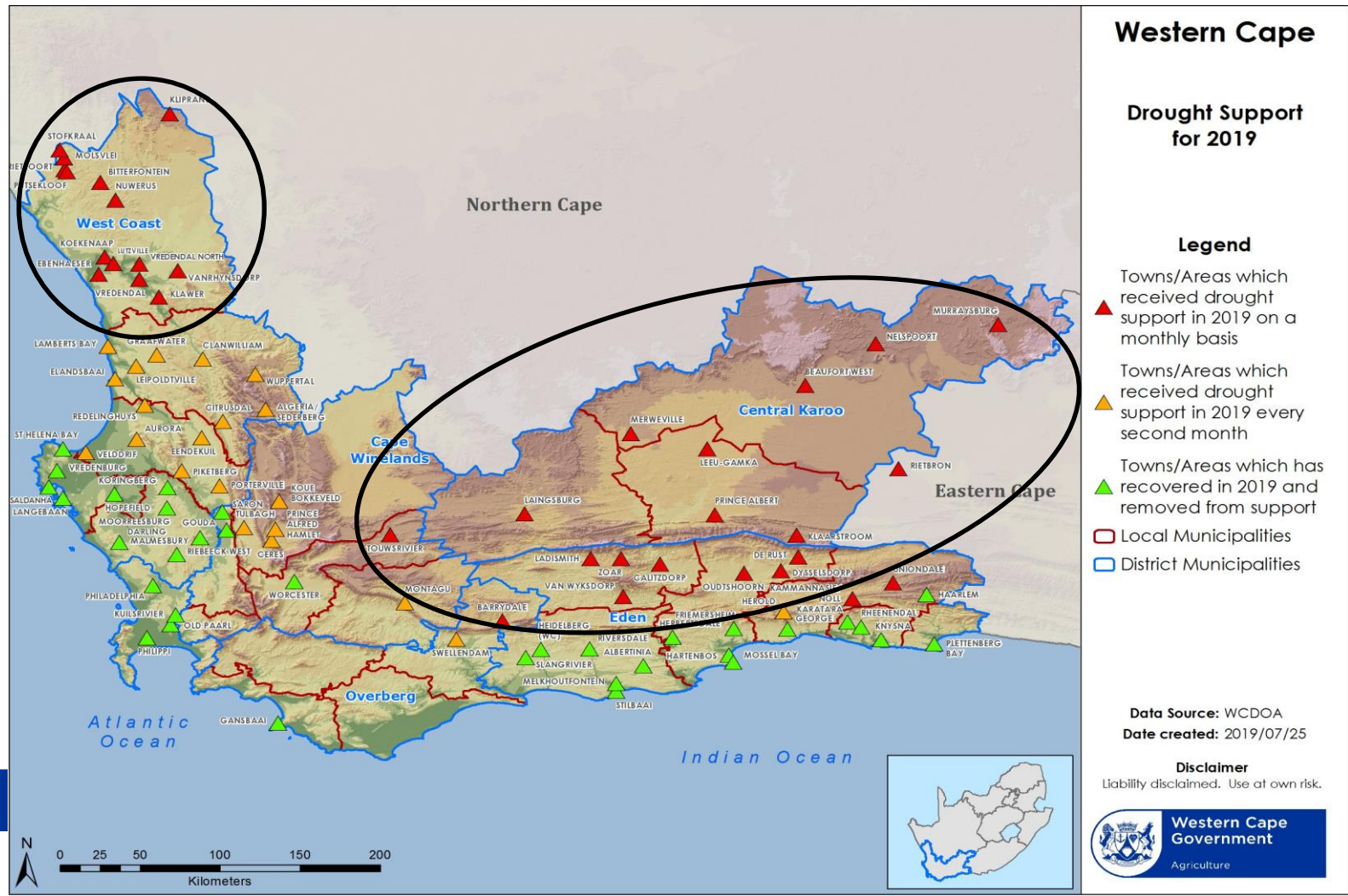






# Drought support in the Western Cape (last 6 months) – October 2018

Currently more than 1 500 farmers receive fodder support;  
Extremely critically (red) - every month - approximately R18 mil per run  
Critical (orange): alternative month: R3 million per run











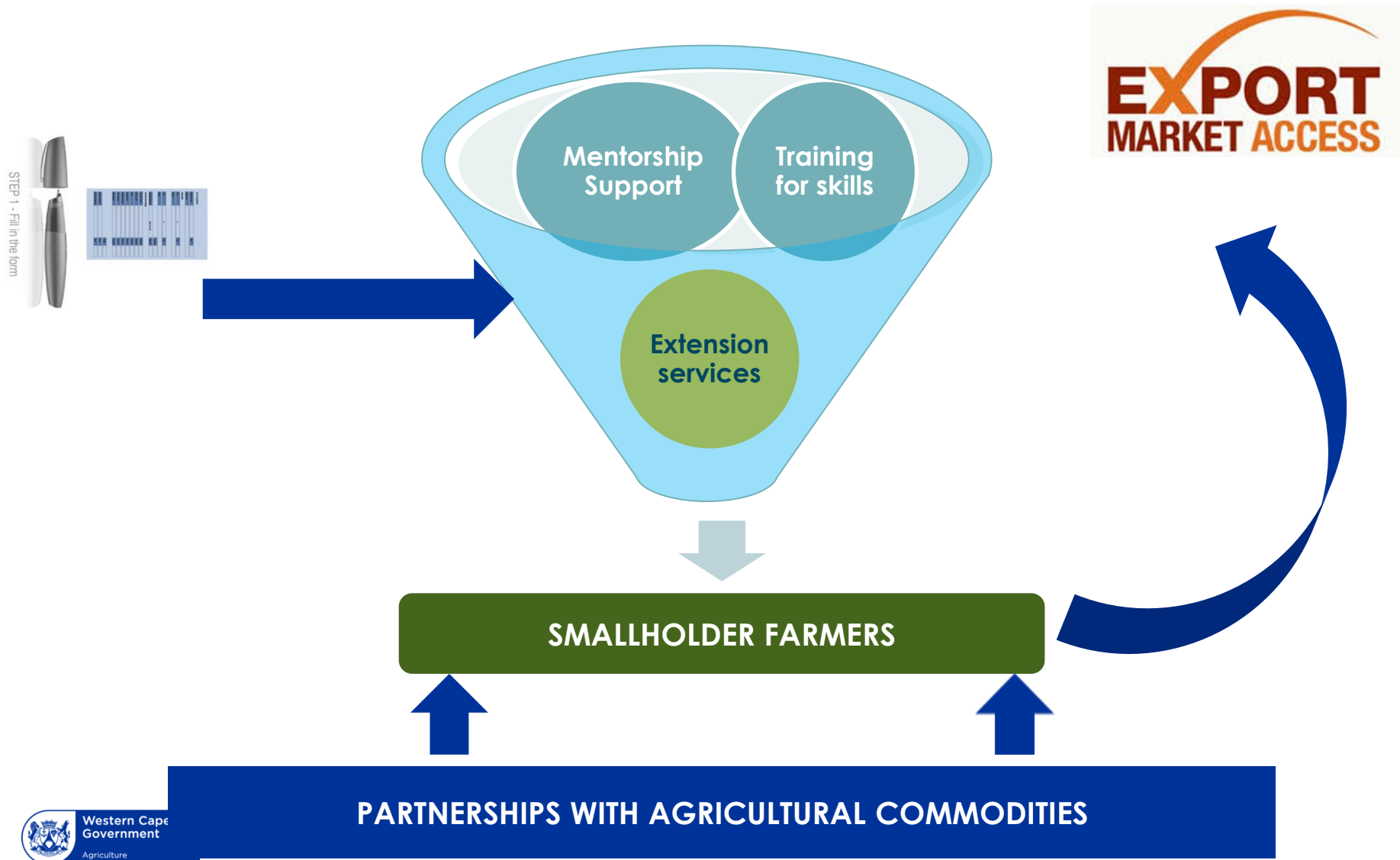


# Business model for Farmer Support



**“An institutional arrangement that draws in multiple spheres of government and the private sector, each understanding their **unique roles**, working from the **same plan**, towards achieving the **same outcomes**” = BLACK FARMER DEVELOPMENT**

# Agricultural Enterprise Development



# Planting season – ha planted





# Signed APP targets (2019/20)

PROVINCE	SIGNED OFF APP TARGETS	QUARTERLY TARGETS			
		Q1	Q2	Q3	Q4
<b>WESTERN CAPE</b>	<b>4 300</b>	<b>0</b>	<b>4 300</b>	<b>0</b>	<b>0</b>

# Province State of Readiness (Planted)

DISTRICT	Allocated Budget (CASP & Provincial) R'000	Targeted/ Hectares	Expected Yield (tons)	No of Beneficiaries	Production Inputs Distributed R'000	Mechanisation Support provided R'000	Technical Support Provided	Overall State of Readiness%
OVERBERG	6 800	1342	3489,2	46	4 300	715	EA&S and Mentorship	100%
SWARTLAND	12 100	2178	9262,2	138	7 000	1 632	EA&S and Mentorship	100%
CAPE WINELANDS	2 700	780	1931,8	7	2 200	153	EA&S and Mentorship	100%
<b>TOTAL</b>	<b>21 600</b>	<b>4 300</b>	<b>14 683,2</b>	<b>191</b>	<b>13 500</b>	<b>2 500</b>		<b>100%</b>

# Output

PROVINCE	SIGNED OFF APP TARGETS	OUTPUT			
		Q1	Q2	Q3	Q4
<b>WESTERN CAPE</b>	<b>4 300</b>	<b>0</b>	<b>4 418</b>	<b>0</b>	<b>0</b>



	LIST OF BENEFICIARIES THAT HAVE RECEIVED INPUTS AND OTHER SUPPORT									
DISTRICT	PROJECT COORDINATES	TRADITIONAL AUTHORITY ( if applicable)	PROJECT NAME	Farmer and contact	TOTAL HECTARES	NO OF FARMERS IDENTIFIED (Grp leader	TONS OF SEED	TONS OF FERTILIZER O	NO. OF MECHANIZATION UNITS AVAILABLE	OVERALL LEVEL OF PLANTING
OVERBERG	34,344485 19,7644182	NA	Subcosign CC	Yaseen Valie Adams 064 789 1693	24	1	1,68	4,56	1	100%
	34,481791 19,892381	NA	Amaqhawwe Agri (PTY) LTD	Riedewaan Marcus 082 228 2332	209	1	14,63	39,71	4	100%
	34.662945 19,788199	NA	Iqhude farming	Justice Mxokozeli 0829389841	133	1	9,31	25,27	3	100%
	34,230311 19,436912	NA	Overberg Boerdery Trust	Christiaan Hans 0827822937	65	1	0,325	12,35	2	100%
	34,46824 19,89085 -34.512184	NA	AgriDwala (Edms) BPK	Daniel Pieters 0836011529	555	1	35,975	105,45	1	100%
	20.059117	NA	AGV Boerdery	James Filander 0762980564	356	1	28,12	69,16	3	100%

[illegible]

LIST OF BENEFICIARIES THAT HAVE RECEIVED INPUTS AND OTHER SUPPORT

DISTRICT	PROJECT COORDINATES	TRADITIONAL AUTHORITY (if applicable)	PROJECT NAME	Farmer and contact	TOTAL HECTARES	NO OF FARMERS IDENTIFIED (Group leader)	TONS OF SEED	TONS OF FERTILIZER	NO. OF MECHANIZATION AVAILABLE	OVERALL LEVEL OF PLANTING
SWARTLAND	33,0946 18,512000	NA	MMM Boerdery (PTY) LTD	Alfreda Mars 0840480209	205	1	17,95	38,95	5	100%
	32,64508 18,356692	NA	Welbeloon Boerdery Trust	Willem Klaase 0832346096	183	1	30,31	82,27	3	100%
	32,63664 18,321245	NA	Langrug Boerdery	Franklin Isaac Smith 0737019982	140	1	12,18	33,06	3	100%
	32,926423 18,619409	NA	One Vision	Debbie Theunissen 021 931 8517	73	1	0	13,87	1	100%
	32,594925 18,749321	NA	Lenqua CC	Egan Duminy 083 245 7372	13	1	1,3	2,47	2	100%



	LIST OF BENEFICIARIES THAT HAVE RECEIVED INPUTS AND OTHER SUPPORT									
DISTRICT	PROJECT COORDINATES	TRADITIONAL AUTHORITY (if applicable)	PROJECT NAME	Farmer and contact	TOTAL HECTARES	NO OF FARMERS IDENTIFIED (Group leader)	TONS OF SEED	TONS OF FERTILIZER	NO. OF MECHANIZATION AVAILABLE	OVERALL LEVEL OF PLANTING
CAPE WINELANDS	34,005406 20,071254	NA	Swart Boerdery	Ralph Swart 0824270175	780	1	59,21	141,17	3	100%
	33,561329 19,796627	NA	Laaste Rivier		2	1	3	12	1	100%
	33,359994 19,335614	NA	Nduli		35	1	4	7	2	100%

# Technical support to farmers

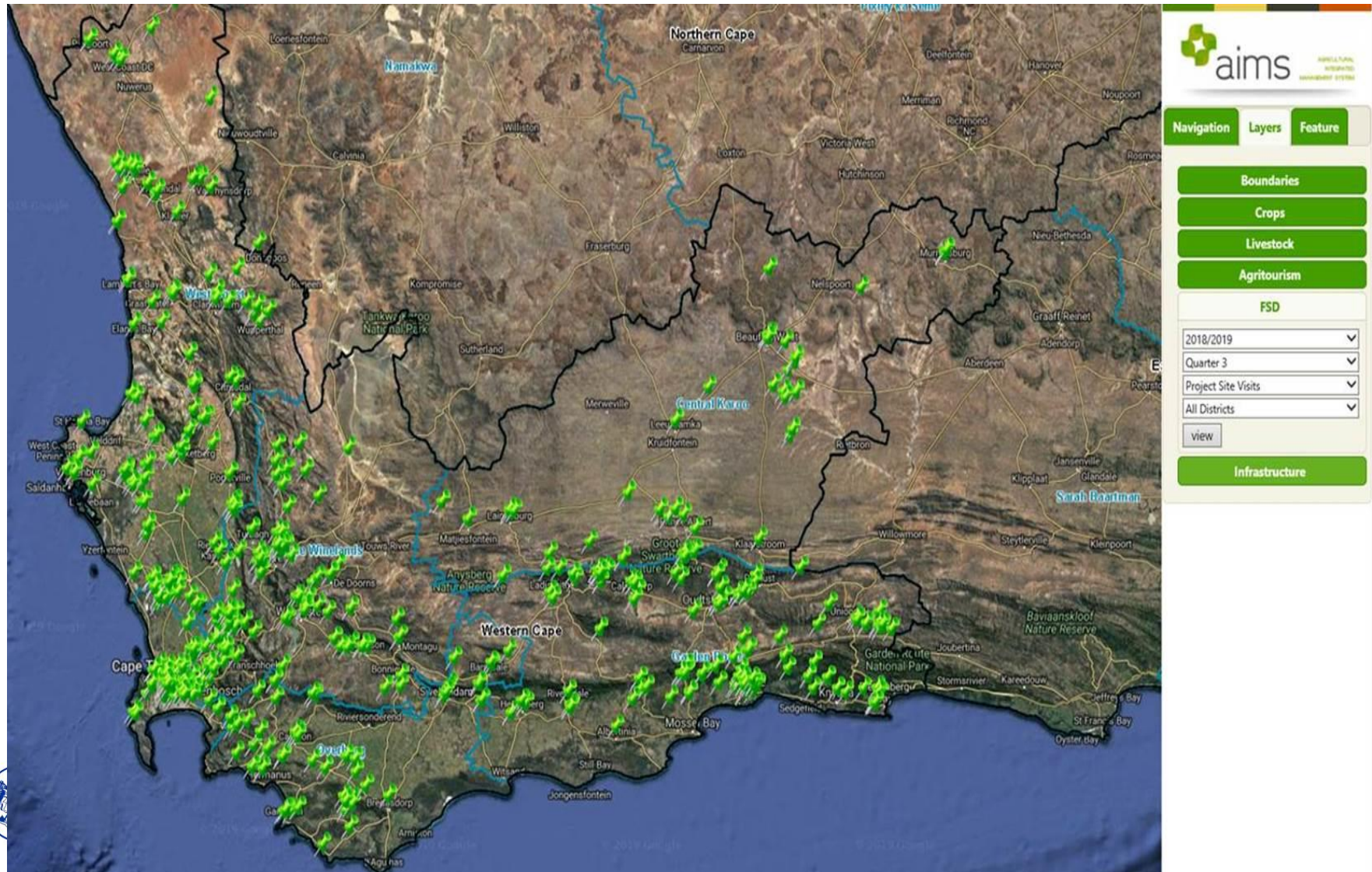


# Visibility and Accountability of Extension





# Site visits – where we have been?





# Ms Alfreda Mars – MMM Boerdery

- Land reform project – PLAS, Swartland municipality
- Practice mixed farming, **i.e. Grains and Livestock (cattle and sheep)**
- Job creation: 3 permanent & 8 seasonal workers
- Part of the Financial Record Keeping (FRK) programme
- Mentorship provided by the GRAIN SA as part of the commodity approach.
- Planted 205 ha of small grain



# Justice Mxokozeli – Iqude farming

- PLAS farm in the Overberg region
- **Receive mentorship support from HORTGRO**
- Practice mixed farming; i.e. , **i.e. Grains and Livestock (cattle and sheep)**
- Part of the Financial Record Keeping (FRK) programme
- Planted 133 ha oats
- Market their livestock through BKB
- Justice is a former student of Elsenburg





# Partnerships





# Jobs created

Province	Targeted ha	Beneficiarie s	Total jobs	No of male	No of female	No of youth	No of people with Disability
WESTERN CAPE	4 300 (4 418)	191	299	137	162	71	27

# Challenges and mitigating strategies

<b>DISTRICT CHALLENGES OF NOT MEETING THE TARGETS</b>	None
<b>MITIGATION STRATEGIES</b>	<ul style="list-style-type: none"><li>- Partnership arrangements with the private sector.</li><li>- Climate Smart Agriculture, extension messaging help farmers deal with the new normal.</li><li>- Support from Agricultural Economic services unit, through the Market Access Programme.</li><li>- Institutionalised Gantt Chart system for tracking of progress of projects.</li><li>- Mentorship support from commodity organisations as no cost to the black farmers.</li></ul> <p>*Long-term strategies</p>

# Conclusion

---

- **Partnerships** are key to the work of the Department
- Leverage **resources and assets** through these arrangements
- Continue with drought mitigation plans – farmers are encouraged to adopt new farming systems for adaptation to the new normal.
- Established an **alternative crop fund** – to increase the update by smallholder farmers, i.e. cherries (Drought mitigation effort)
- Extension messaging had been re-focused to include climate smart agriculture.
- Green Cape – had been pulled to support climate proofing of smallholder farmers.

# Contact Us



**Western Cape  
Government**

## **Dr Mogale Sebopetsa**

Chief Director: Farmer Support and Development

---

**Tel:** +21 (0)21 808 5103

**Fax:** +21 (0)21 808 7629

[mogales@elsenburg.com](mailto:mogales@elsenburg.com)

[www.westerncape.gov.za](http://www.westerncape.gov.za)