

**MY TOMORROW  
IS IN MY  
HANDS**

# Preparations for the 2016 Municipal Elections

Portfolio Committee on Home Affairs  
17 May 2016



**MUNICIPAL  
ELECTIONS  
2016**



**SOUTH AFRICA**

# Outline

- **Delimitation / Voting Districts**
- **Registration of Voters**
- **Voters' Roll**
- **Registration of Political Parties and Liaison**
- **Electoral Staff**
- **Election Timetable**
- **Commission Determinations**
- **Information and Communication Technology**
- **Ensuring the Credibility of Elections**

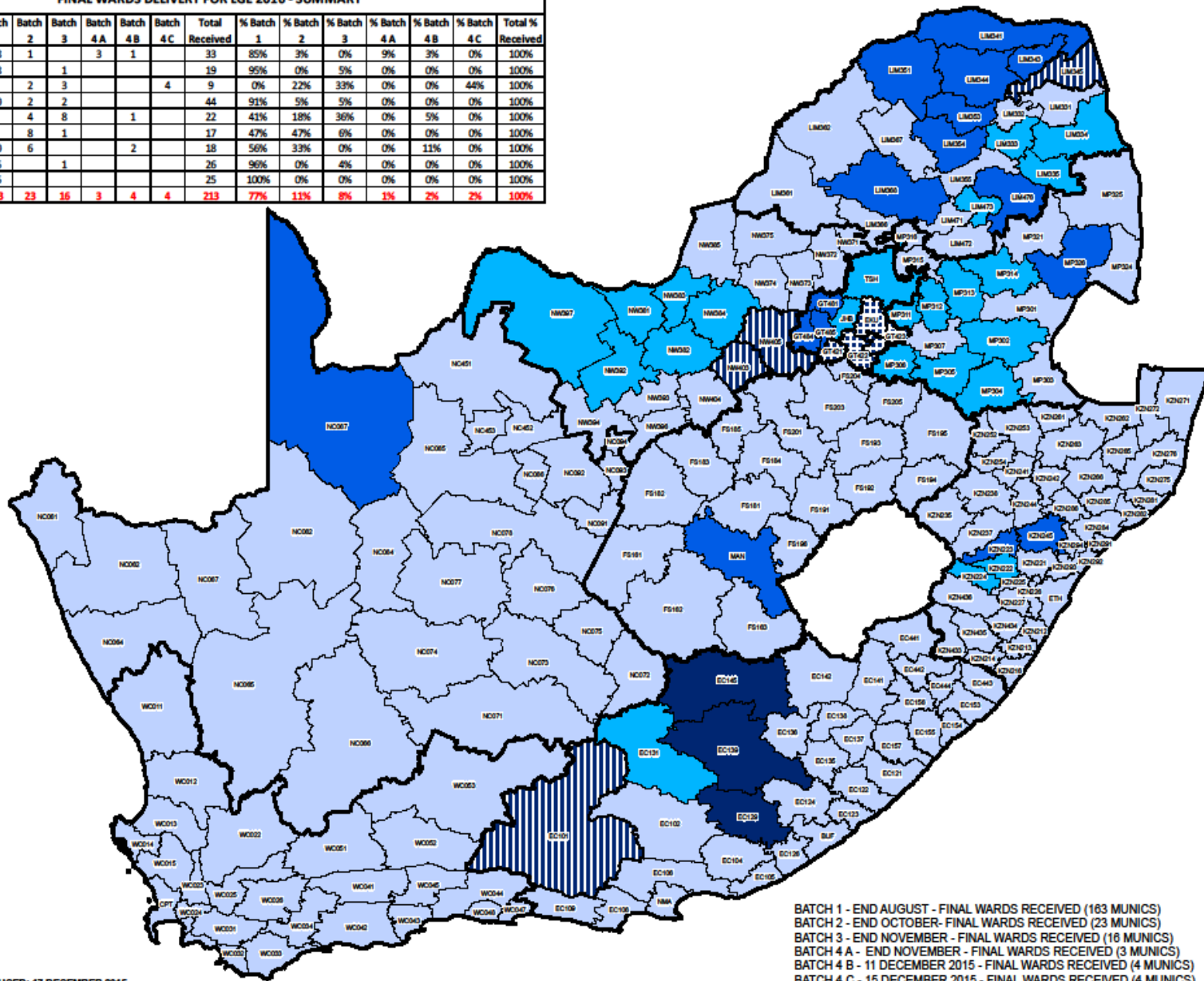
# DELIMITATION

- Developments in Human settlement patterns have been followed until the last Registration Weekend held on 09 and 10 April 2016;
- There are 22 617 voting districts (54% Growth); which will have sub-stations (*alias*, voting streams);

# FINAL WARDS DELIVERY BY THE MDB FOR LGE 2016

FINAL WARDS DELIVERY FOR LGE 2016 - SUMMARY

Province	Grand Total	Batch 1	Batch 2	Batch 3	Batch 4A	Batch 4B	Batch 4C	Total Received	% Batch 1	% Batch 2	% Batch 3	% Batch 4A	% Batch 4B	% Batch 4C	Total % Received
Eastern Cape	33	28	1			1		33	85%	3%	0%	9%	3%	0%	100%
Free State	19	18	1	1				19	95%	0%	5%	0%	0%	0%	100%
Gauteng	9	2	3				4	9	0%	22%	33%	0%	0%	44%	100%
KwaZulu-Natal	44	40	2	2				44	91%	5%	5%	0%	0%	0%	100%
Limpopo	22	9	4	8		1		22	41%	18%	36%	0%	5%	0%	100%
Mpumalanga	17	8	8	1				17	47%	47%	6%	0%	0%	0%	100%
North West	18	10	6			2		18	56%	33%	0%	0%	11%	0%	100%
Northern Cape	25	25		1				26	96%	0%	4%	0%	0%	0%	100%
Western Cape	25	25						25	100%	0%	0%	0%	0%	0%	100%
<b>Grand Total</b>	<b>213</b>	<b>163</b>	<b>23</b>	<b>16</b>	<b>3</b>	<b>4</b>	<b>4</b>	<b>213</b>	<b>77%</b>	<b>11%</b>	<b>8%</b>	<b>1%</b>	<b>2%</b>	<b>2%</b>	<b>100%</b>



BATCH 1 - END AUGUST - FINAL WARDS RECEIVED (163 MUNICS)  
 BATCH 2 - END OCTOBER - FINAL WARDS RECEIVED (23 MUNICS)  
 BATCH 3 - END NOVEMBER - FINAL WARDS RECEIVED (16 MUNICS)  
 BATCH 4 A - END NOVEMBER - FINAL WARDS RECEIVED (3 MUNICS)  
 BATCH 4 B - 11 DECEMBER 2015 - FINAL WARDS RECEIVED (4 MUNICS)  
 BATCH 4 C - 15 DECEMBER 2015 - FINAL WARDS RECEIVED (4 MUNICS)



# VOTING DISTRICT

Election Year	Total Voting Districts
1999	14 650
2000	14 988
2004	16 966
2006	18 873
2011	20 859
2014	22 263
2016	22 617

54% growth in number of Voting Districts

# REGISTRATION OF VOTERS

- Targeted and communication registration initiatives were undertaken
- Two registration weekends successfully concluded in the Republic (05 and 06 March 2016) and (09 and 10 April 2016);
- The Voters' Roll is currently at 26.3 million, a growth of 44.6%

# VOTERS' ROLL

as at 12 April 2016

Election Year	Total Voters' Roll
1999	18.17 million
2000	18.47 million
2004	20.67 million
2006	21.05 million
2009	23.18 million
2014	25.39 million
2016	26.3 million

44.6% growth in voters' roll

# VOTERS' ROLL

as at 12 April 2016

Female	Age Group	Male
303,447	18 - 19	250,599
3,152,648	20 - 29	2,680,910
3,351,624	30 - 39	3,049,502
2,787,046	40 - 49	2,448,463
2,232,641	50 - 59	1,770,968
1,410,834	60 - 69	1,039,098
762,815	70 - 79	443,010
443,929	80 +	169,067
	Totals	
14,444,984		11,851,617
	26,296,601	

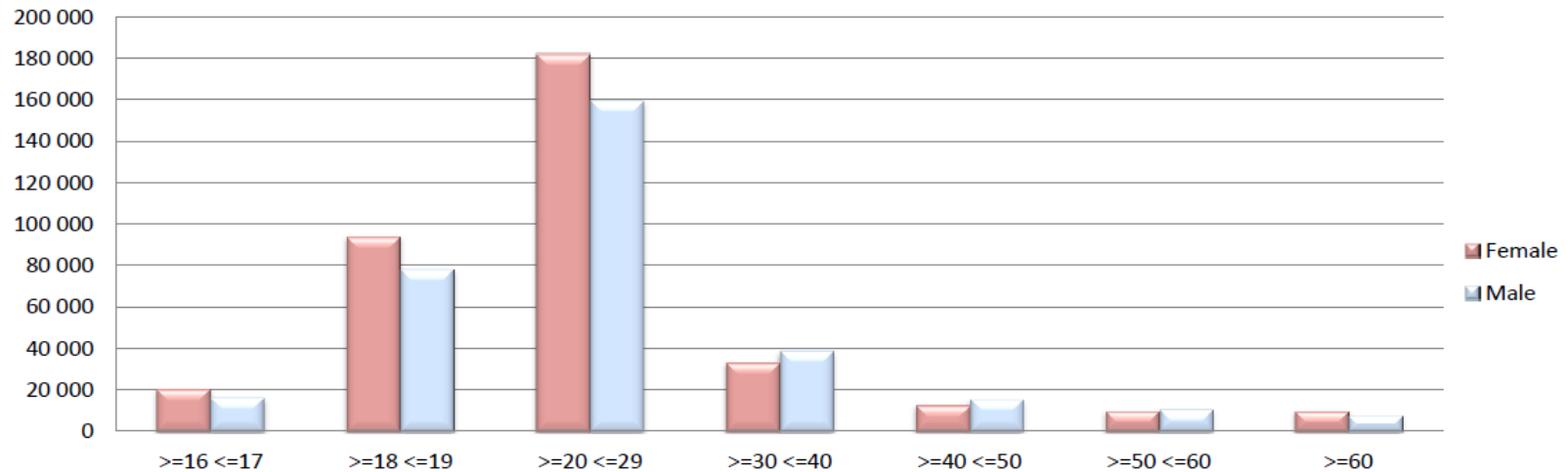


# REGISTRATION IMPACT

New Registrations: Age & Gender - 11 April 2016 at 17:00

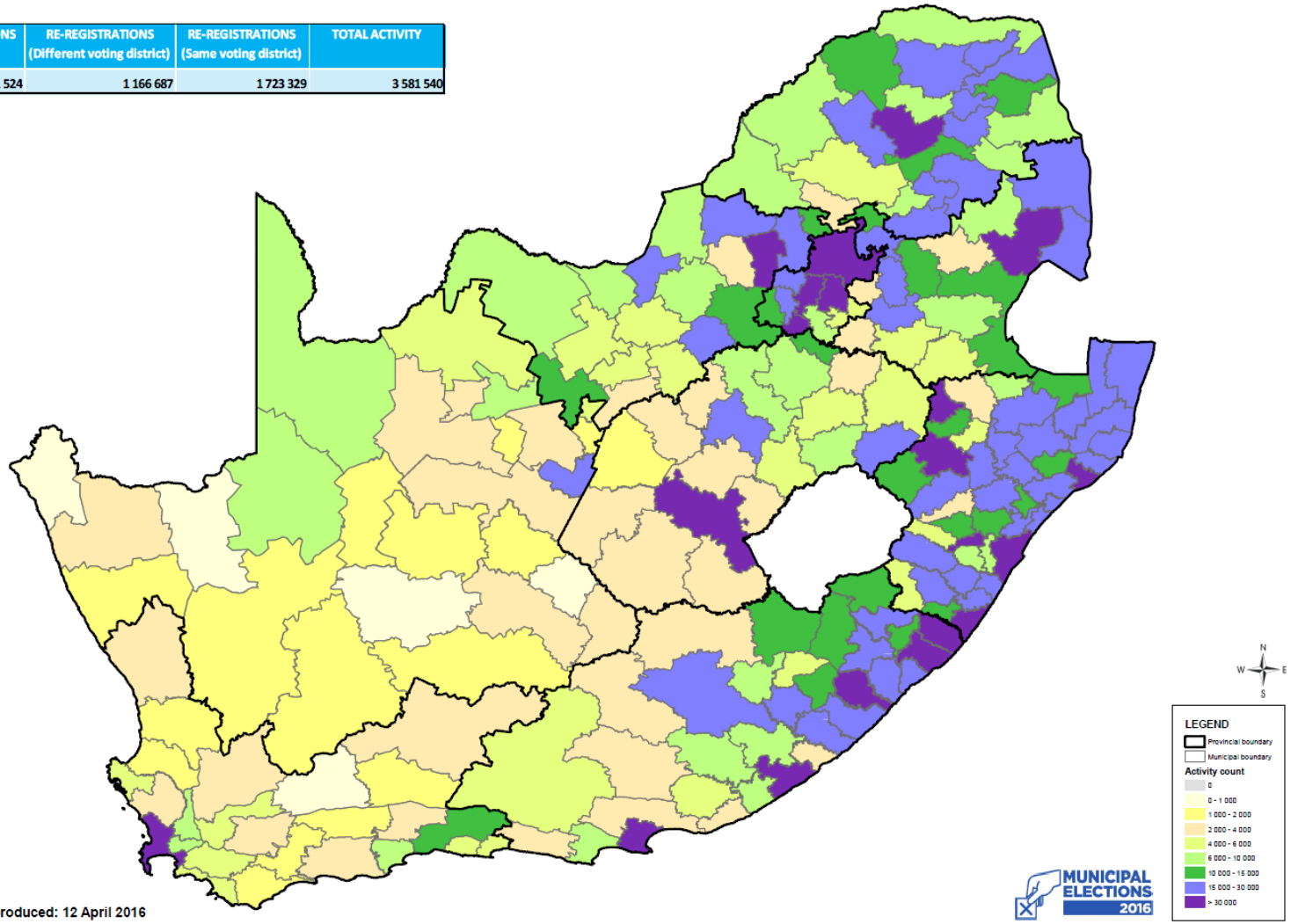
Age Group	Female	% of Total New Registrations in Age Group	Male	% of Total New Registrations in Age Group	TOTAL New Registrations in Age Group	% of TOTAL New Registrations
>=16 <=17	20 726	55.46%	16 648	44.54%	37 374	5.40%
>=18 <=19	94 120	54.55%	78 410	45.45%	172 530	24.95%
>=20 <=29	182 116	53.32%	159 452	46.68%	341 568	49.39%
>=30 <=40	33 388	46.05%	39 109	53.95%	72 497	10.48%
>=40 <=50	12 838	44.51%	16 003	55.49%	28 841	4.17%
>=50 <=60	10 140	48.52%	10 759	51.48%	20 899	3.02%
>=60	10 011	56.19%	7 804	43.81%	17 815	2.58%
<b>TOTAL</b>	<b>363 339</b>	<b>52.54%</b>	<b>328 185</b>	<b>47.46%</b>	<b>691 524</b>	<b>100.00%</b>

New Registrations: Age & Gender - 11 April 2016 at 17:00



# REGISTRATION IMPACT

NEW REGISTRATIONS	RE-REGISTRATIONS (Different voting district)	RE-REGISTRATIONS (Same voting district)	TOTAL ACTIVITY
691 524	1 166 687	1 723 329	3 581 540



Map produced: 12 April 2016



SOUTH AFRICA

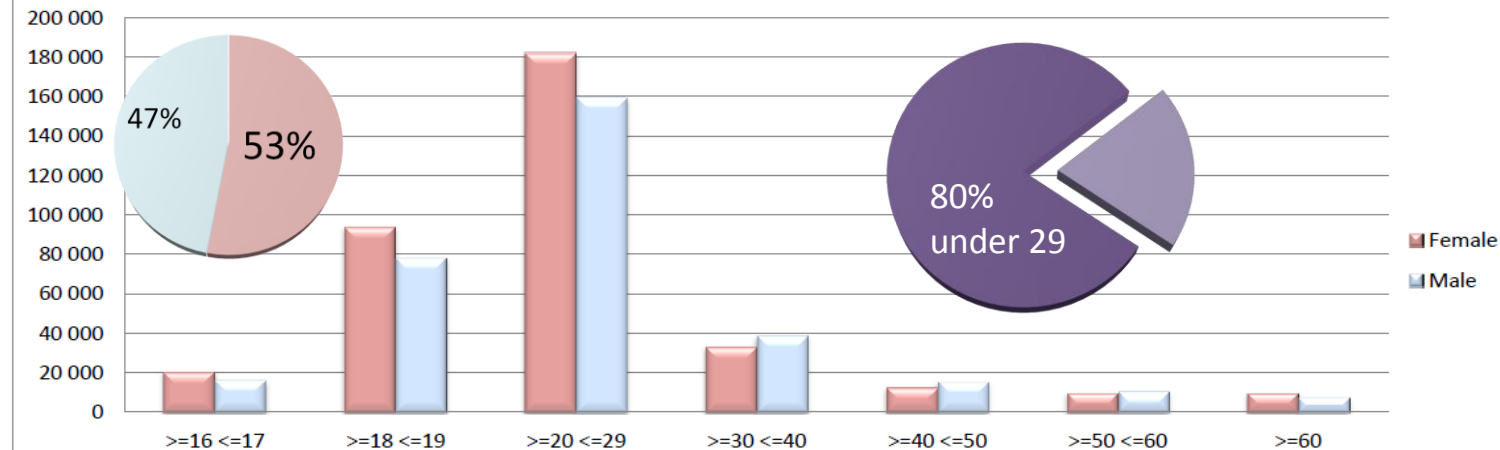
# REGISTRATION IMPACT

## Age and Gender Dimensions

New Registrations: Age & Gender - 11 April 2016 at 17:00

Age Group	Female	% of Total New Registrations in Age Group	Male	% of Total New Registrations in Age Group	TOTAL New Registrations in Age Group	% of TOTAL New Registrations
>=16 <=17	20 726	55.46%	16 648	44.54%	37 374	5.40%
>=18 <=19	94 120	54.55%	78 410	45.45%	172 530	24.95%
>=20 <=29	182 116	53.32%	159 452	46.68%	341 568	49.39%
>=30 <=40	33 388	46.05%	39 109	53.95%	72 497	10.48%
>=40 <=50	12 838	44.51%	16 003	55.49%	28 841	4.17%
>=50 <=60	10 140	48.52%	10 759	51.48%	20 899	3.02%
>=60	10 011	56.19%	7 804	43.81%	17 815	2.58%
<b>TOTAL</b>	<b>363 339</b>	<b>52.54%</b>	<b>328 185</b>	<b>47.46%</b>	<b>691 524</b>	<b>100.00%</b>

New Registrations: Age & Gender - 11 April 2016 at 17:00



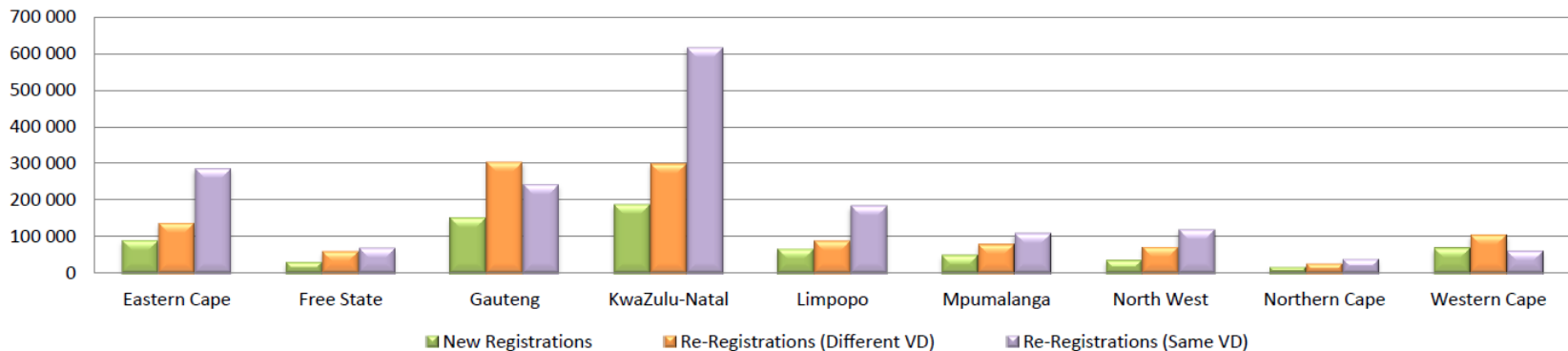
# VOTERS ROLL

## 26,3 million

Registration weekend activity - 11 April 2016 at 17:00

Province	New Registrations	% of Total Provincial Activity	Re-Registrations (Different VD)	% of Total Provincial Activity	Re-Registrations (Same VD)	% of Total Provincial Activity	TOTAL Provincial Activity	% of TOTAL Activity
Eastern Cape	89 239	17.41%	136 953	26.71%	286 463	55.88%	512 655	14.31%
Free State	30 186	19.10%	59 094	37.40%	68 737	43.50%	158 017	4.41%
Gauteng	150 584	21.63%	303 645	43.61%	242 023	34.76%	696 252	19.44%
KwaZulu-Natal	186 933	16.96%	299 020	27.13%	616 031	55.90%	1 101 984	30.77%
Limpopo	65 744	19.47%	87 943	26.04%	183 985	54.49%	337 672	9.43%
Mpumalanga	48 621	20.61%	78 576	33.31%	108 687	46.08%	235 884	6.59%
North West	35 657	15.82%	71 272	31.62%	118 470	52.56%	225 399	6.29%
Northern Cape	16 182	20.25%	25 562	31.99%	38 152	47.75%	79 896	2.23%
Western Cape	68 378	29.25%	104 622	44.75%	60 781	26.00%	233 781	6.53%
<b>TOTAL</b>	<b>691 524</b>	<b>19.31%</b>	<b>1 166 687</b>	<b>32.58%</b>	<b>1 723 329</b>	<b>48.12%</b>	<b>3 581 540</b>	<b>100.00%</b>

Registration Activity by Province - 11 April 2016 at 17:00



# REGISTRATION OF POLITICAL PARTIES AND LIAISON

- There were 357 registered political parties as at 13 May 2016

National	203
Eastern Cape	7
Free State	6
Gauteng	8
KwaZulu-Natal	14
Mpumalanga	14
Northern Cape	9
Limpopo	30
North West	5
Western Cape	61

# THE 2016 LGE IN CONTEXT

- The 2011 municipal elections were contested by 121 parties and 53 757 candidates (total);

	2011	2016
# of Munics	278	257
# of Wards	4 277	4 392
# of Elections	8 832	9 041

# STAKEHOLDER LIAISON

- Party Liaison Committees in place across all spheres of government. Invitation extended to unrepresented parties;
- Ongoing participations in JOINTS structures – providing ongoing monitoring of conditions in which the elections are to take place;
- Extensive consultations with stakeholders through the National Co-ordinating Forum;
- Conflict resolution panels established;
- Extensive communication per electoral process, emphasising cut-off dates in terms of the cut-off dates as per the Electoral Timetable.
- Good working relations with the Inter-Ministerial Committee on Elections.

# RECRUITMENT AND TRAINING OF ELECTORAL STAFF

- Approximately 220 000 electoral staff members to be recruited and trained. Recruitment is at an advanced stage;
- Presiding and Deputy Presiding Officers already recruited and training is almost completed;
- Training materials revised to adopt a modular approach – easier to organise and emphasise training content and spent define desired training period per area of content;
- Risk management built into required staff numbers per municipality.



# PROCLAMATION OF ELECTION DATE

- The Commission has maintained consultation with the Minister (CoGTA) as required in law;
- Once the elections have been proclaimed, the voters' roll as at proclamation date will be used for the elections;

# ELECTION TIMETABLE (ET) – Schedule 3 to LG:MEA

- An Election Timetable (ET) will be drafted by the EC and consultations will take place on same with political parties represented in the NPLC on the day following the date of proclamation;
- An ET will be gazetted and will set dates, amongst others for:
  - Opening of nomination of candidates and consultations concluded with parties in the NPLC;
  - Submission of the lists of candidates together with the requisite election deposits;
  - Notification of Party / Independent Nominator of non-compliance regarding outstanding documents
  - Compilation of lists of parties contesting the election, certification of party lists and making available those lists;
  - Opening of special vote applications;
  - Conducting of special votes at home as well as at the office of the Presiding Officer;
  - Election Day.

# COMMISSION DETERMINATIONS

The Commission has already determined:

- the design of the ballot paper, the languages to be used on the ballot paper and manner in which the ballot papers have to be accounted for as required by sections 23 and 24 of the LG:MEA, 2000; and
- The voting hours of voting (section 45, LG:MEA, 2000).

# INFORMATION AND COMMUNICATION TECHNOLOGY (ICT)

- Concluded training to parties on the new Candidate Nomination System;
- Drills will be undertaken to test the EC's disaster recovery plans;
- The results systems will undergo independent audits;
- Political parties will have the opportunity to satisfy themselves that indeed, these systems are fit for purpose;
- Dry-runs will be scheduled and all offices will participate in these dry-runs. This is a stress test similar to events on or soon after Election Day;

# CONDITIONS FOR FREE AND FAIR ELECTIONS



- Electoral Amendment and related Regulations have been passed and now incorporated into training materials content;
- Measures have been taken to strengthen the role of party agents at voting stations and results capturing centres (MEO offices);
- Counting is planned to commence immediately after the closure of voting stations;
- Counting will be done in the presence of party agents and observers;
- Results slips will be completed at each voting station and signed-off by the Presiding Officer, party agents and observers present during counting;

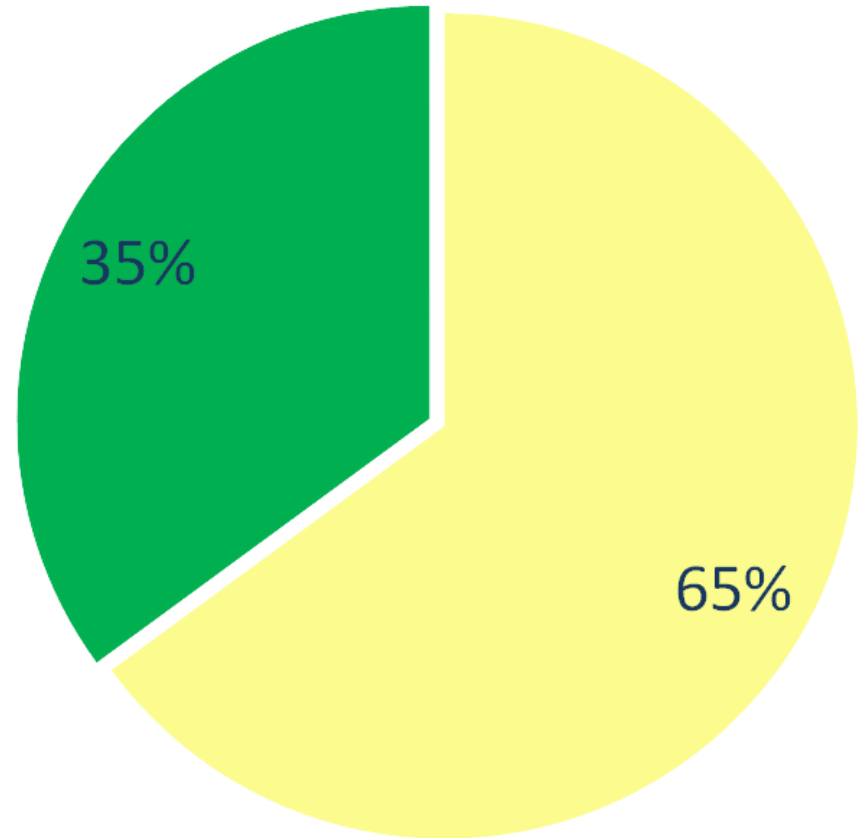
# CONSTITUTIONAL COURT MATTER

- Following the Electoral Court judgment in the Kham & Others vs The Independent Electoral Commission & Others, the Electoral Commission approached the Constitutional Court for clarity on, *inter alia*:
  1. Whether the absence of a voter's address in the voters' roll invalidates the voters' roll;
  2. What the terms '...where such addresses are available' in the context of section 16 of the EA 1998 mean; and
  3. What did the Constitutional Court mean in terms of its order when it referred to the prospective application of its order in the Kham matter.
- The Constitutional Court heard arguments on this matter on Monday 9 May 2016;
- Judgment is reserved.

# VOTERS' ROLL PRE-REGISTRATION WEEKEND

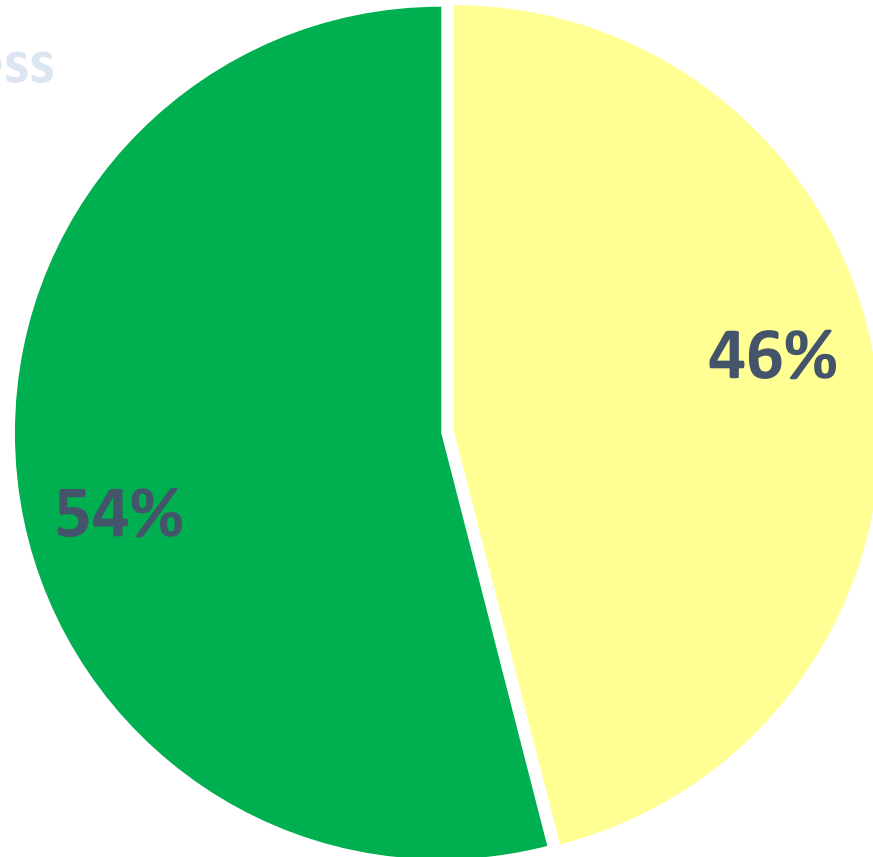
24, 944, 288

-  Complete address
-  Partial or No address



# VOTERS ROLL CURRENTLY 26,3 million

-  **Potential** complete address
-  Partial or No address





# Contact Centre

- Contact Centre opened on 9 November 2015
- Open from 7am to 9pm weekdays
- All official languages
- From January service includes Twitter, Facebook, web-chat and email

