

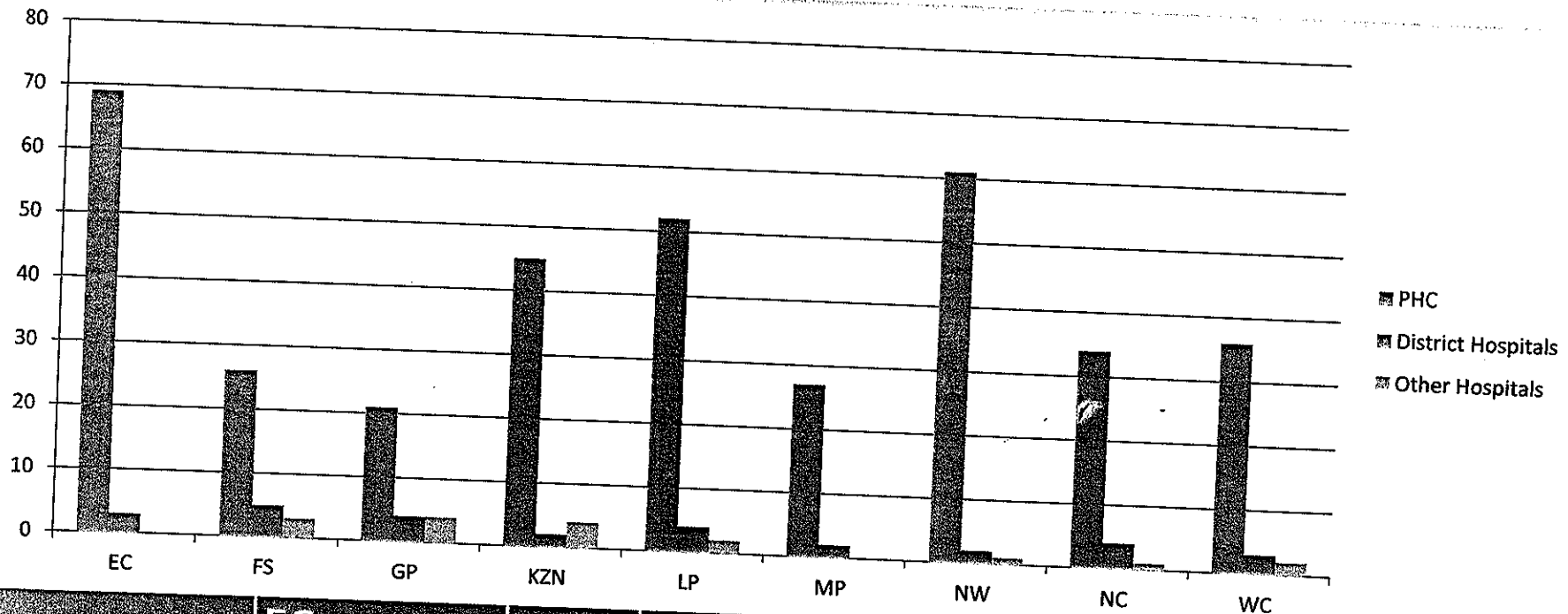
# ***INSPECTIONS RESULTS***

***National Coverage  
2014 -2015***



**Office of Health Standards Compliance**  
Ensuring quality and safety in health care

# NATIONAL INSPECTIONS 2014/2015



	EC	FS	GP	KZN	LP	MP	NW	NC	WC
PHC	69	26	21	45	52	27	61	34	36
District Hospitals	3	5	4	2	4	2	2	4	3
Other Hospitals	0	3	4	4	2	0	1	1	2

# ***EVIDENCE PHC***

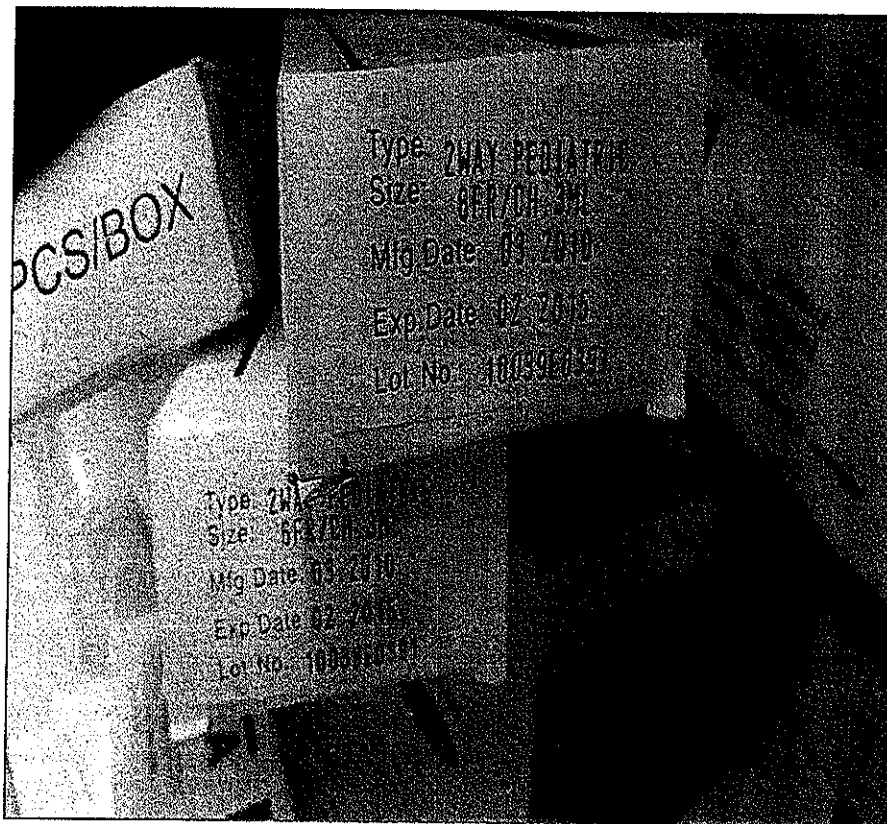
# ***Types or nature of evidence***

- ***Documentation – generally a reliable source but can be faked easily. Mitigate risk by sampling***
- ***Observation – good source of evidence but need understand that act of being “observed” affects how process is performed. Mitigate risk by using checklists, not announcing observation or most importantly correlating results of “observers”***
- ***Interviews – Reliability depends on interviewee, mitigate risk by using stratified samples, correlating results, and developing good questioning skills and using corroboration***
- ***Testing – most reliable form of evidence (generally does not require validation)***

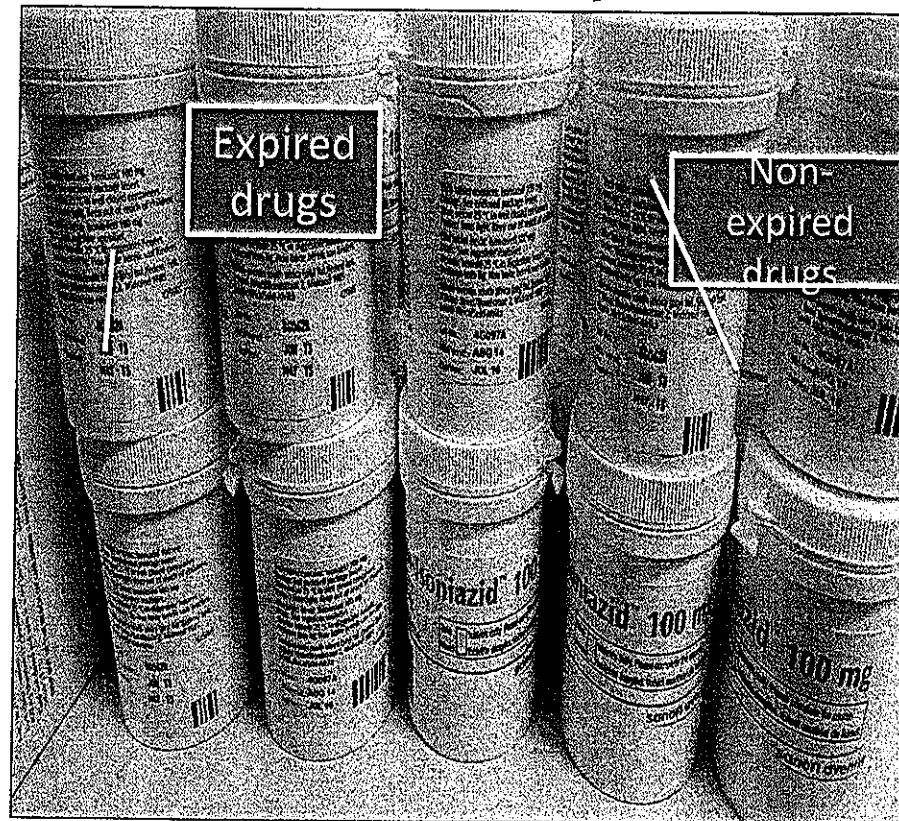


# Procedures relating to the management of medicine not followed

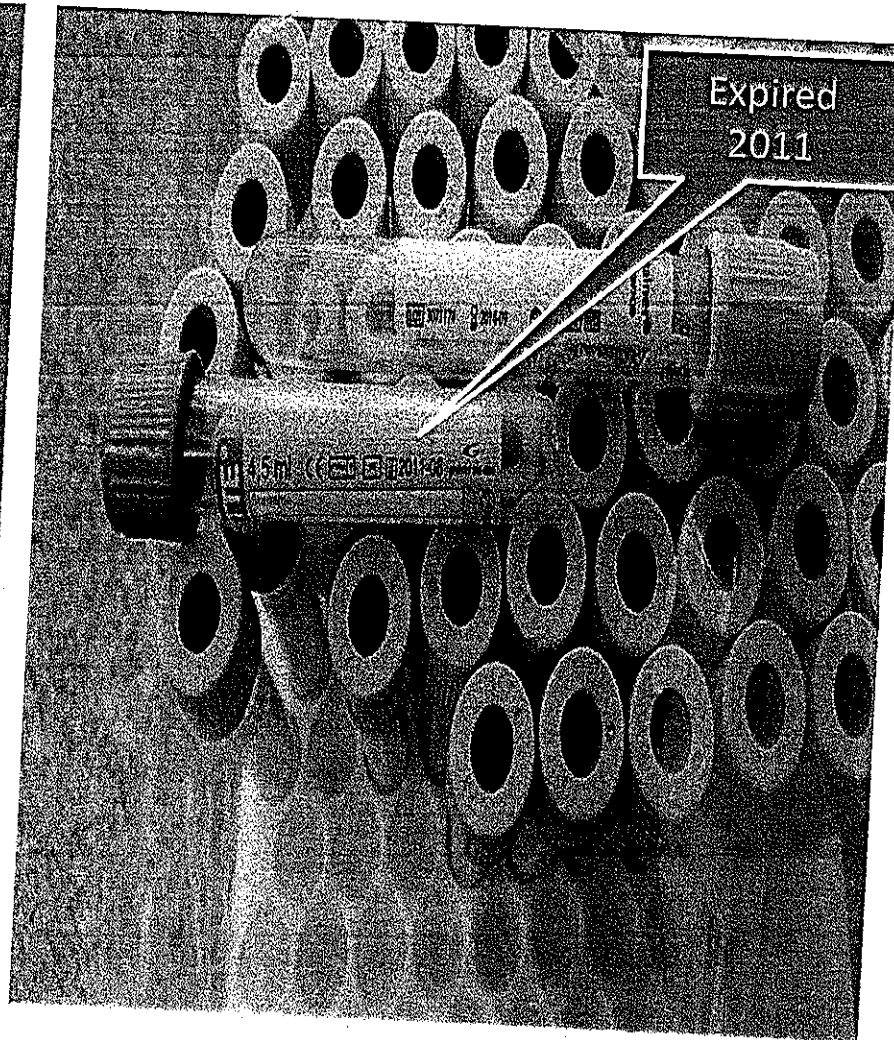
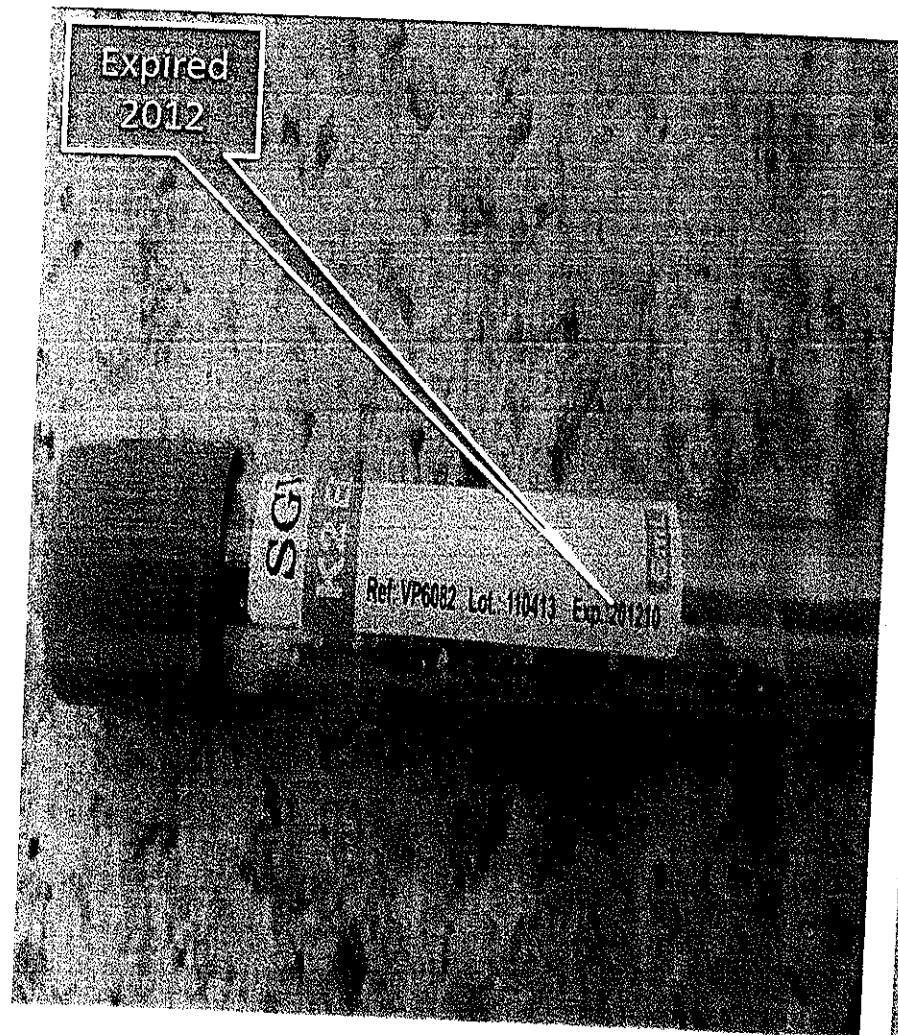
*Expired medical supplies as noted*



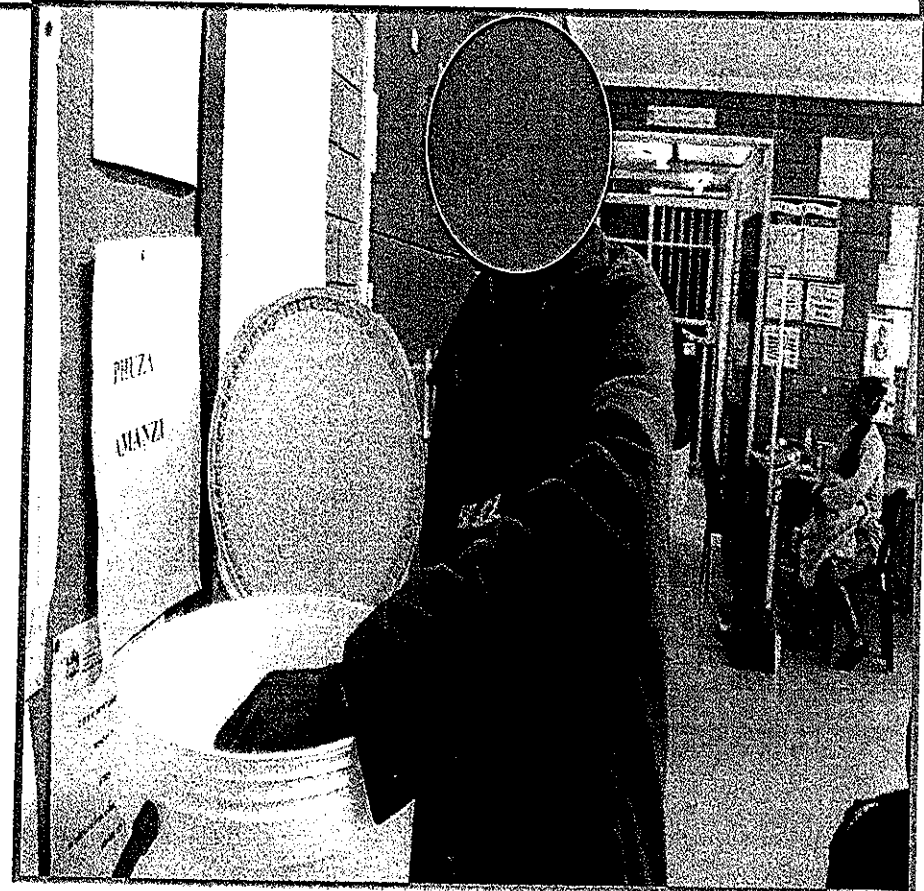
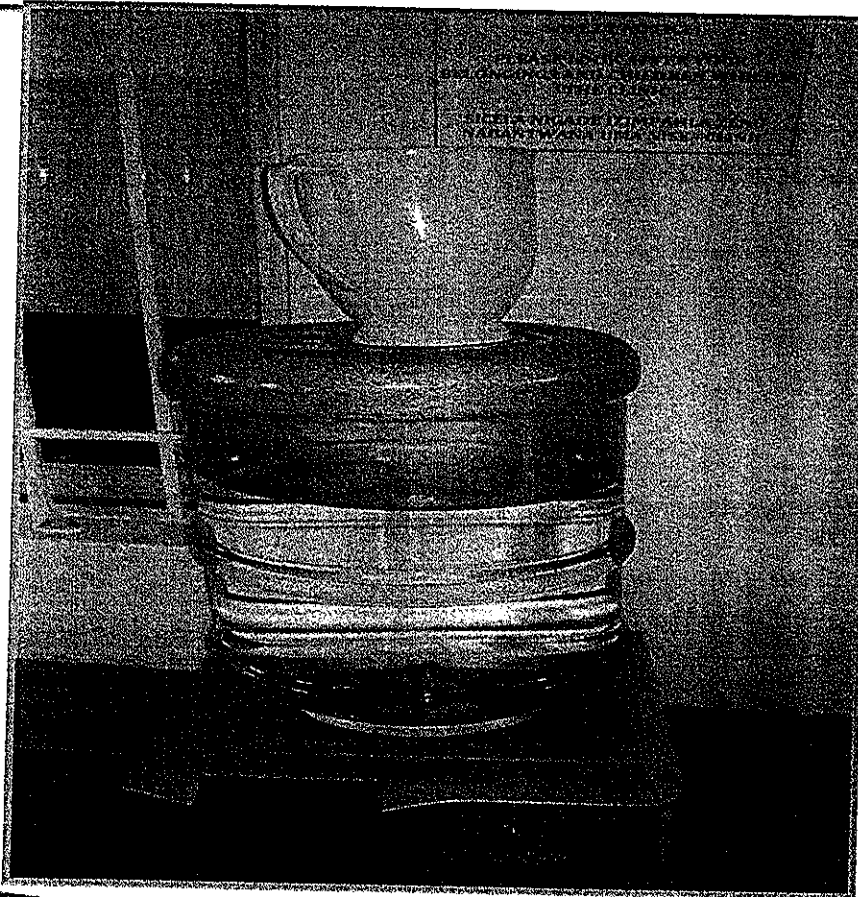
*FEFO and FIFO Principles*



# Good Pharmacy practice not followed



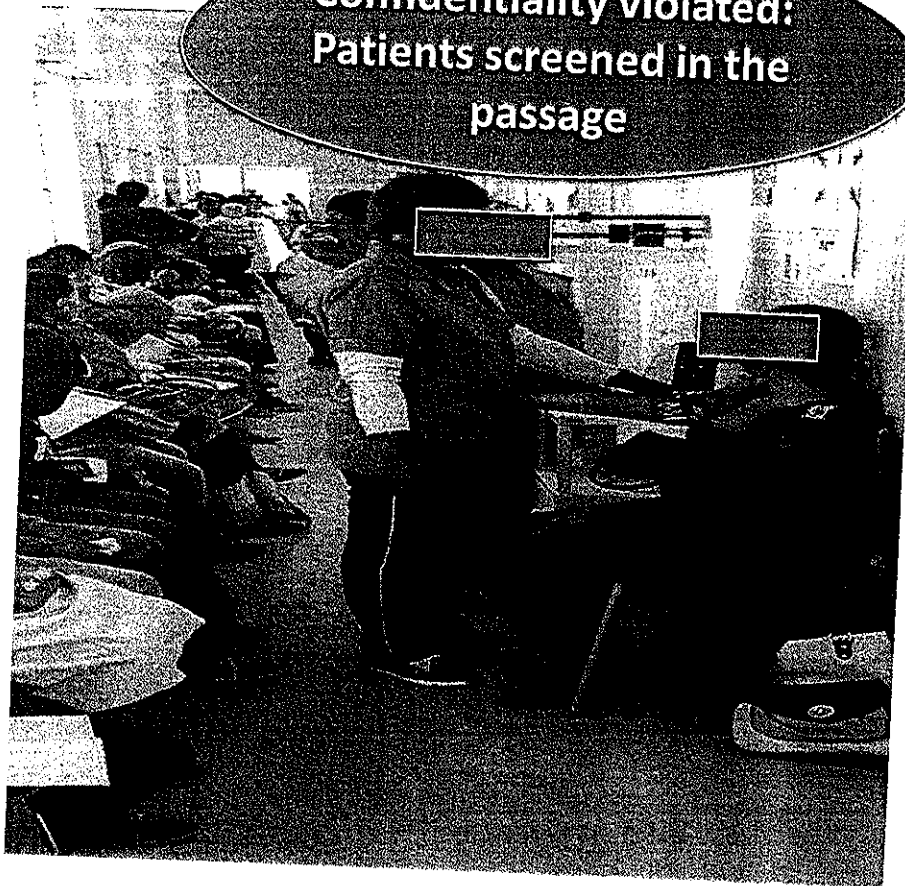
# ***Non availability of clean and safe drinking water for patients not ensured***





# Privacy compromised

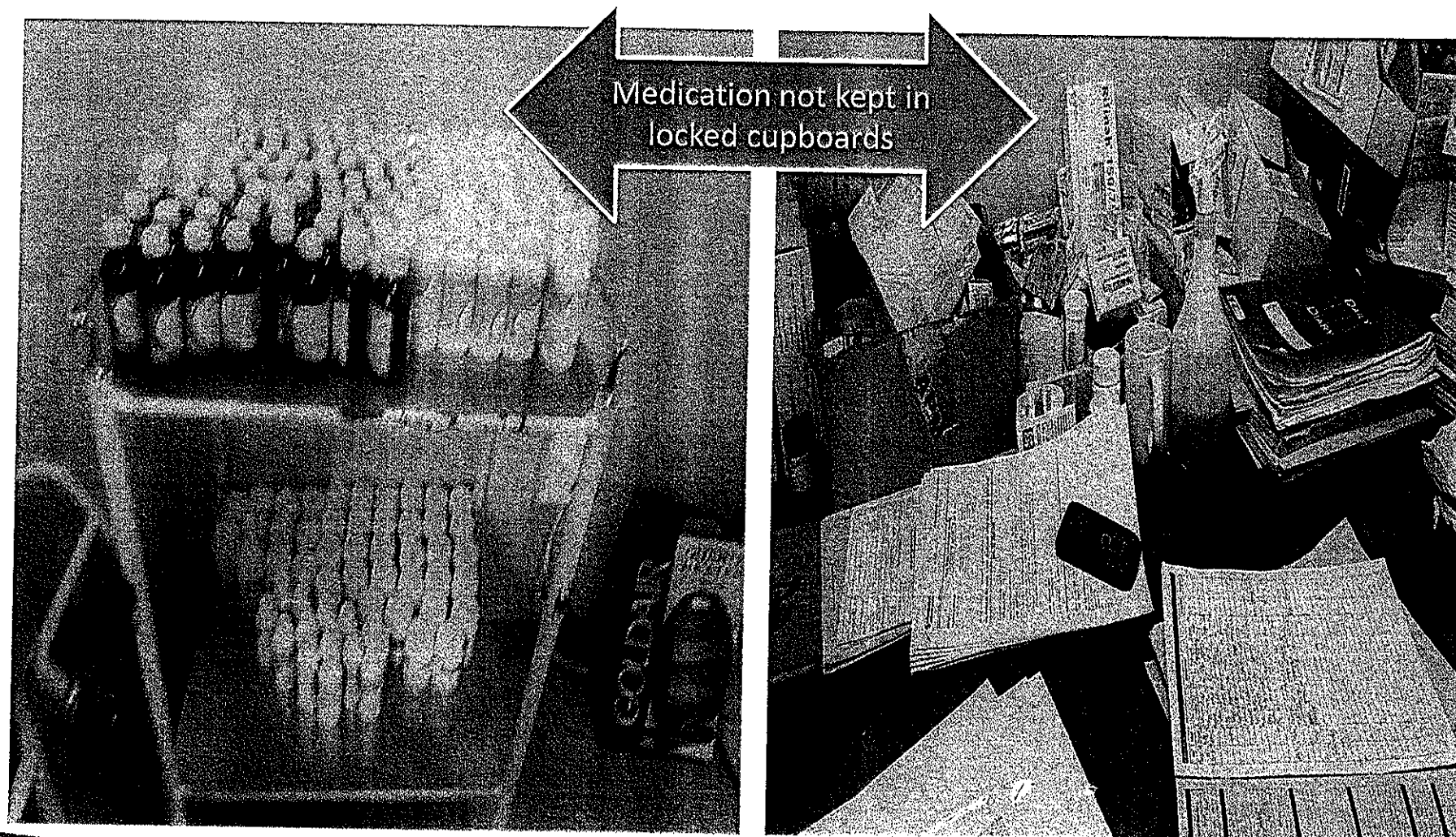
Confidentiality violated:  
Patients screened in the  
passage



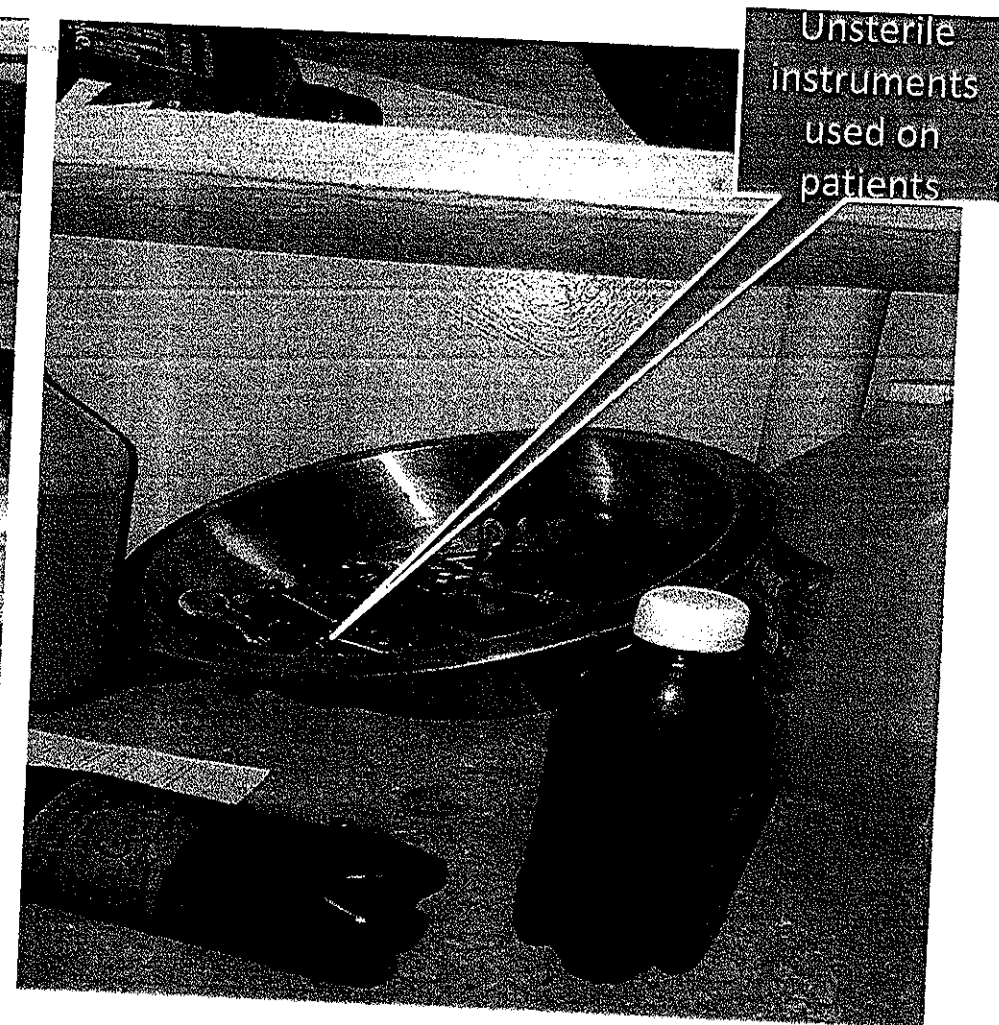
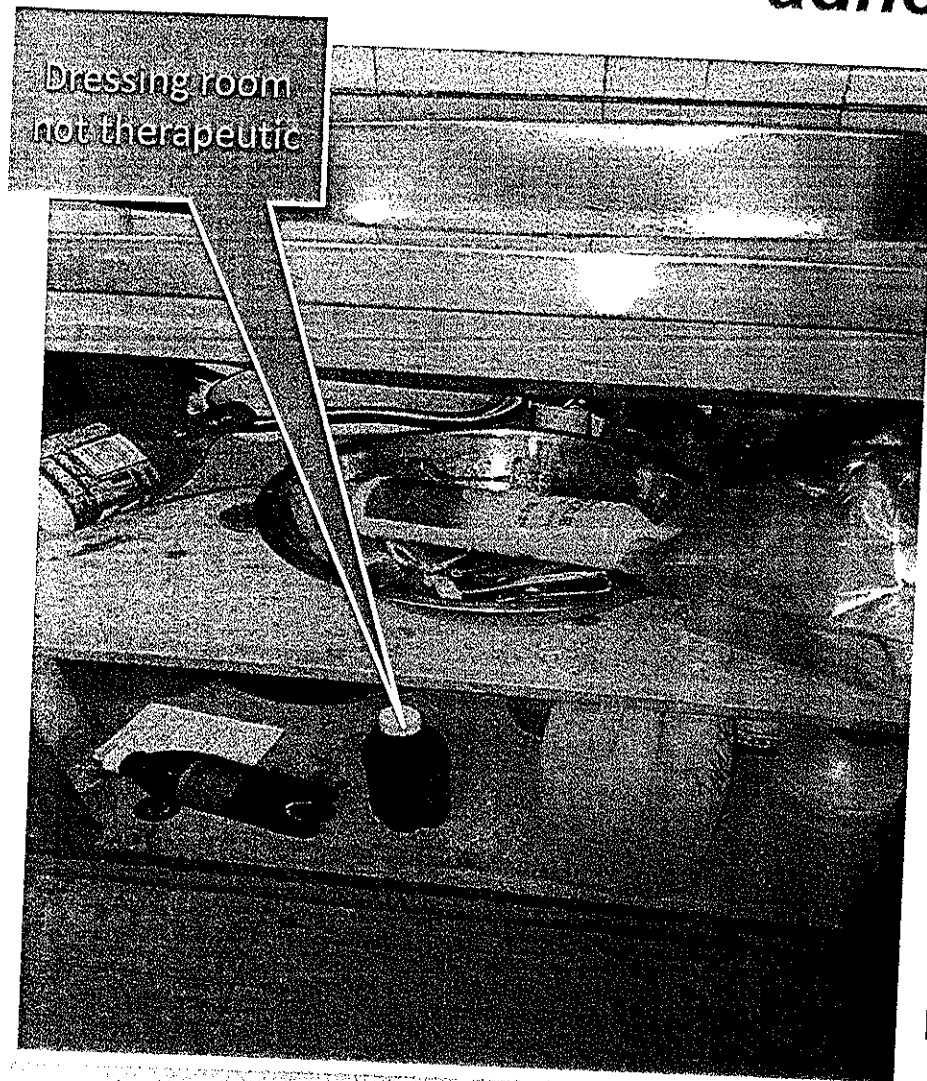
Shortage of chairs  
for patients



# *Good Pharmacy practice not followed*



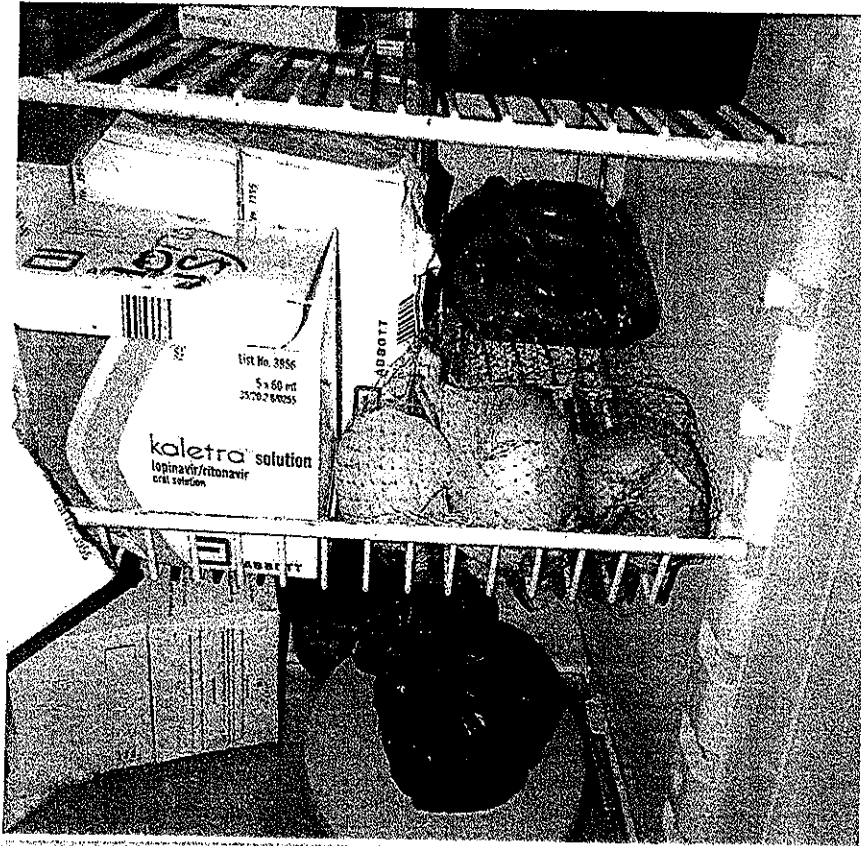
# *Infection prevention and control practices not adhered to*



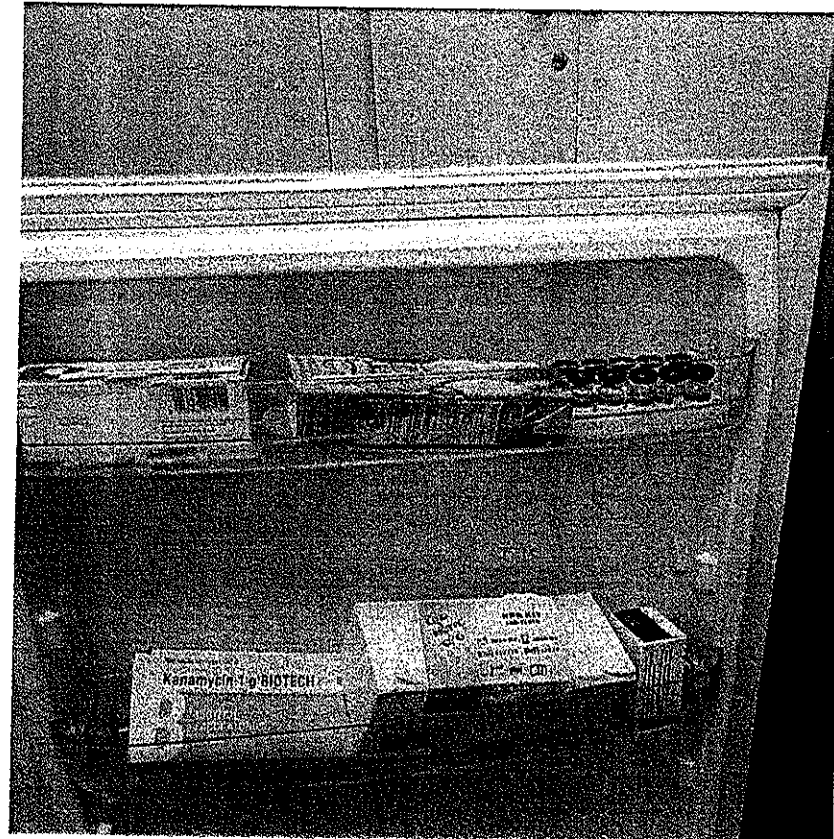


# ***Good pharmacy practice not adhered to***

***FOOD IN THE FRIDGE***

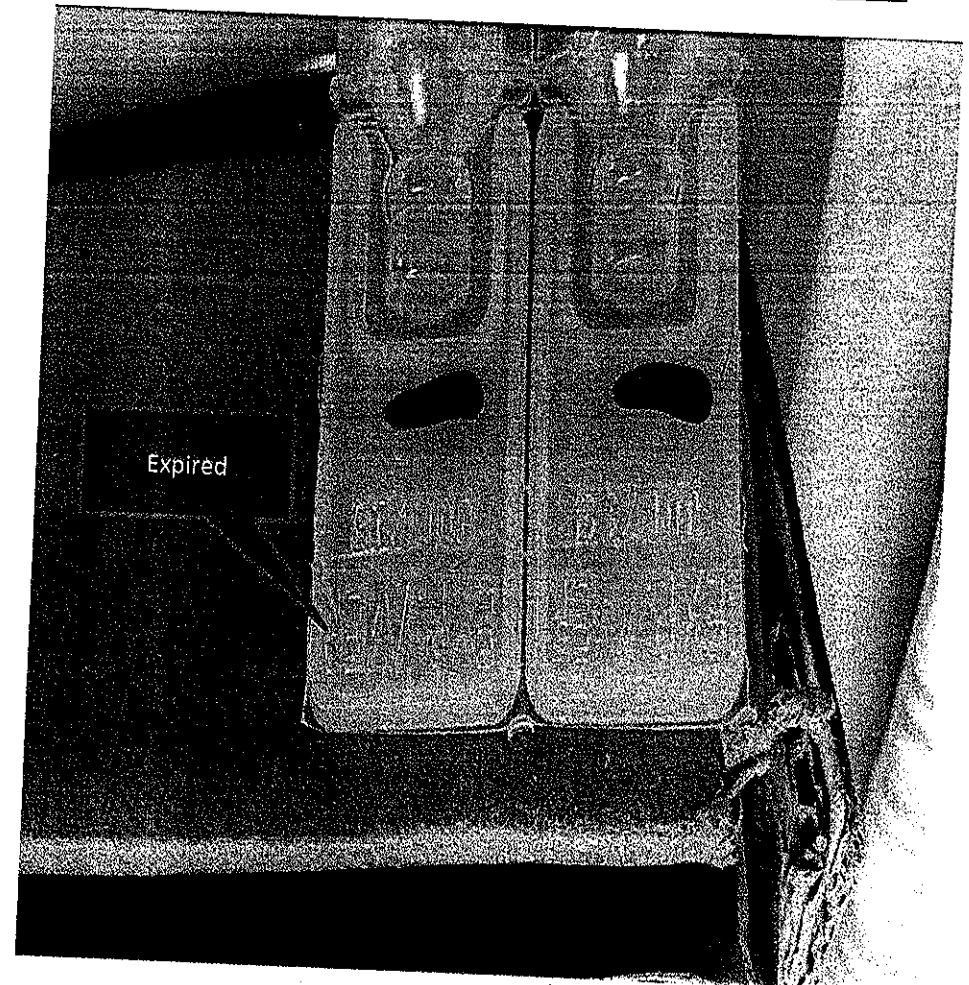
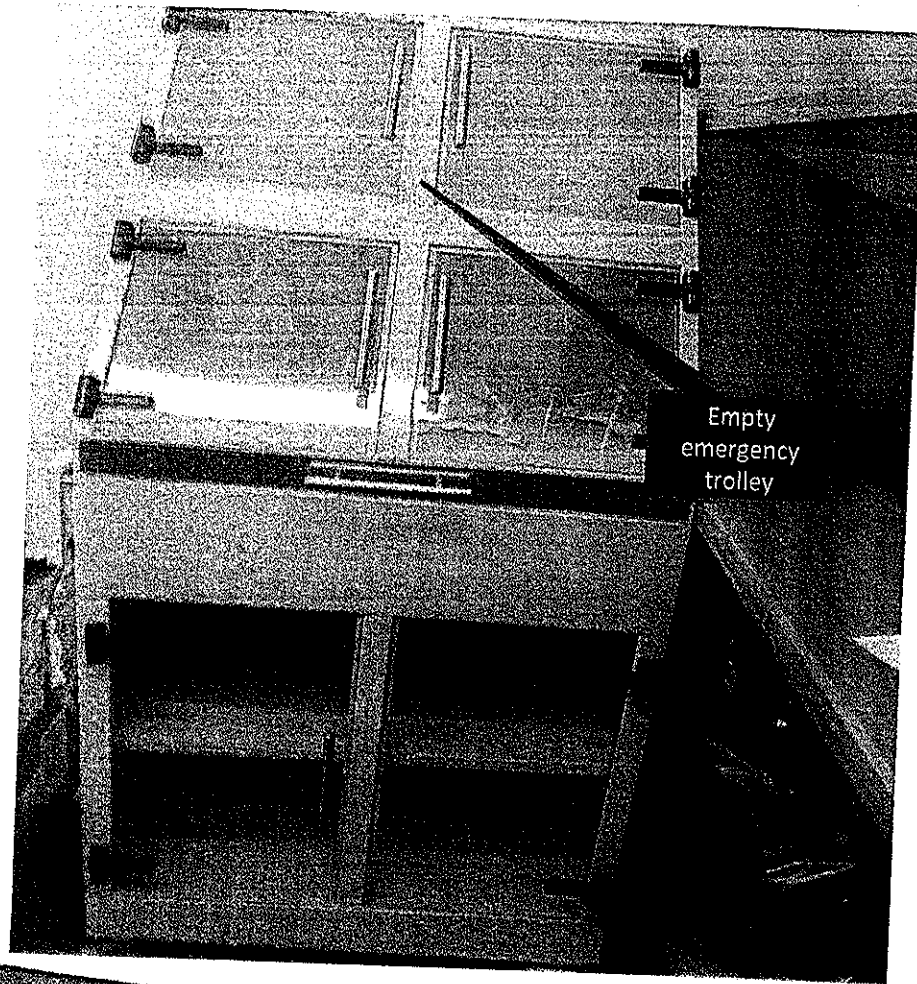


***FOOD IN THE FRIDGE***



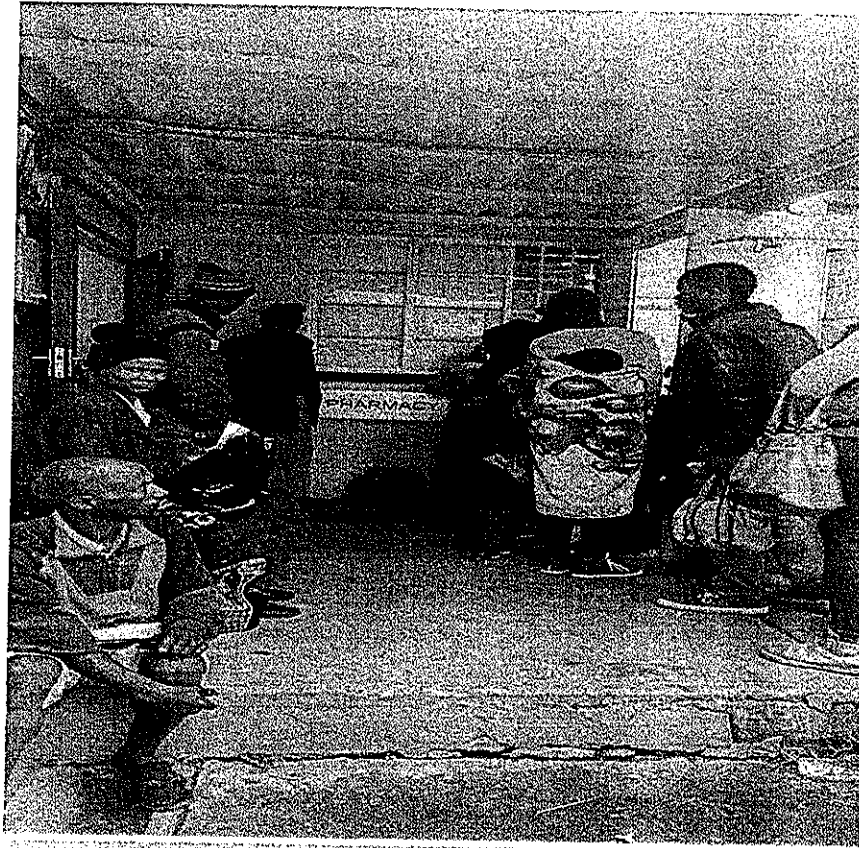


# *Safety of patients not assured*

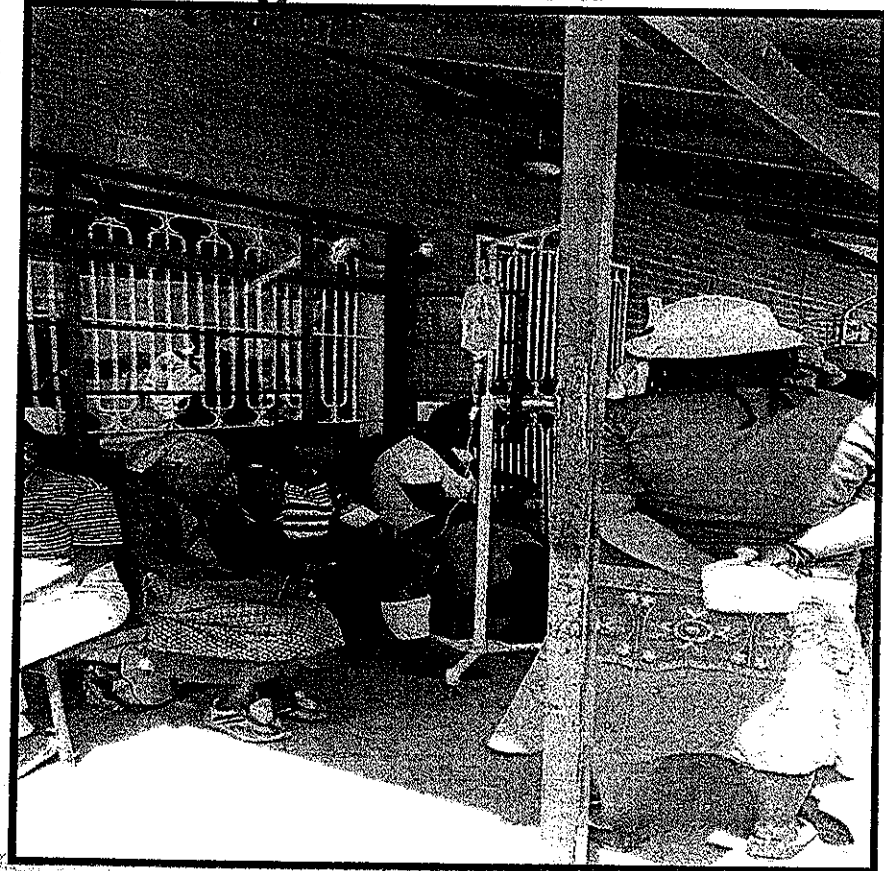


## ***Procedures to manage queues and minimise waiting times are not followed***

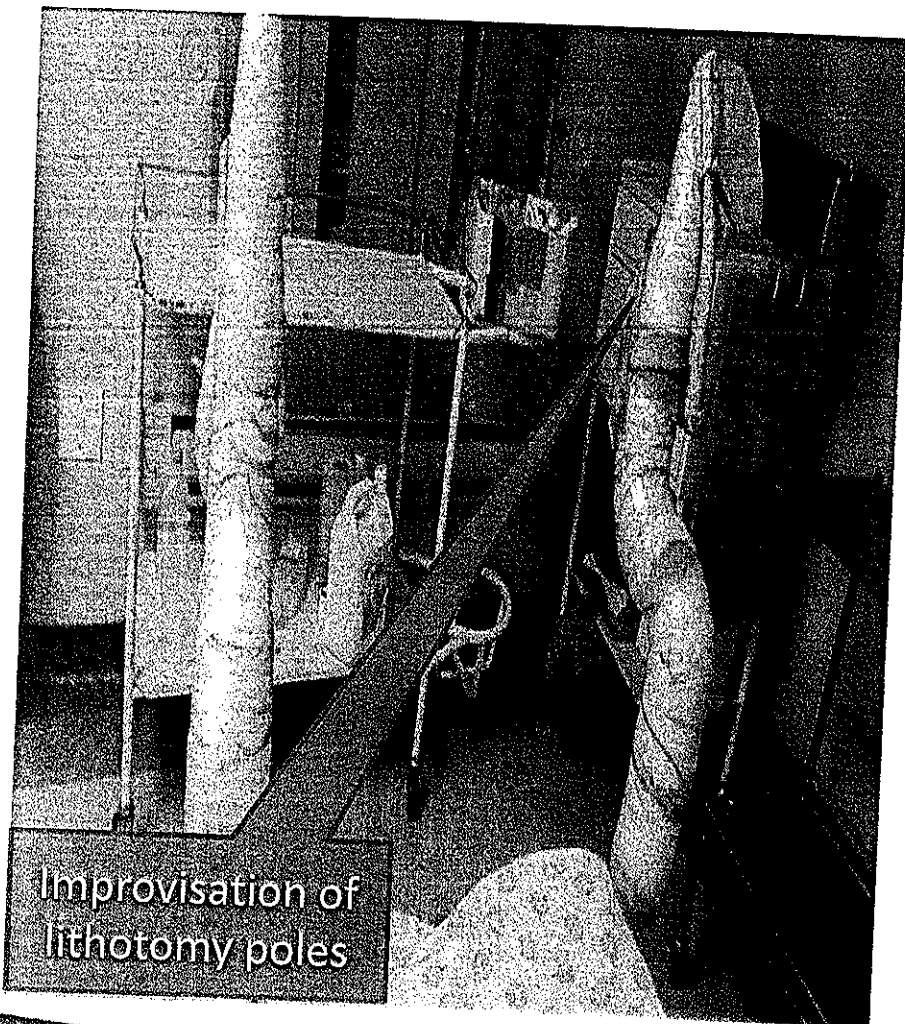
***Patients queuing outside***



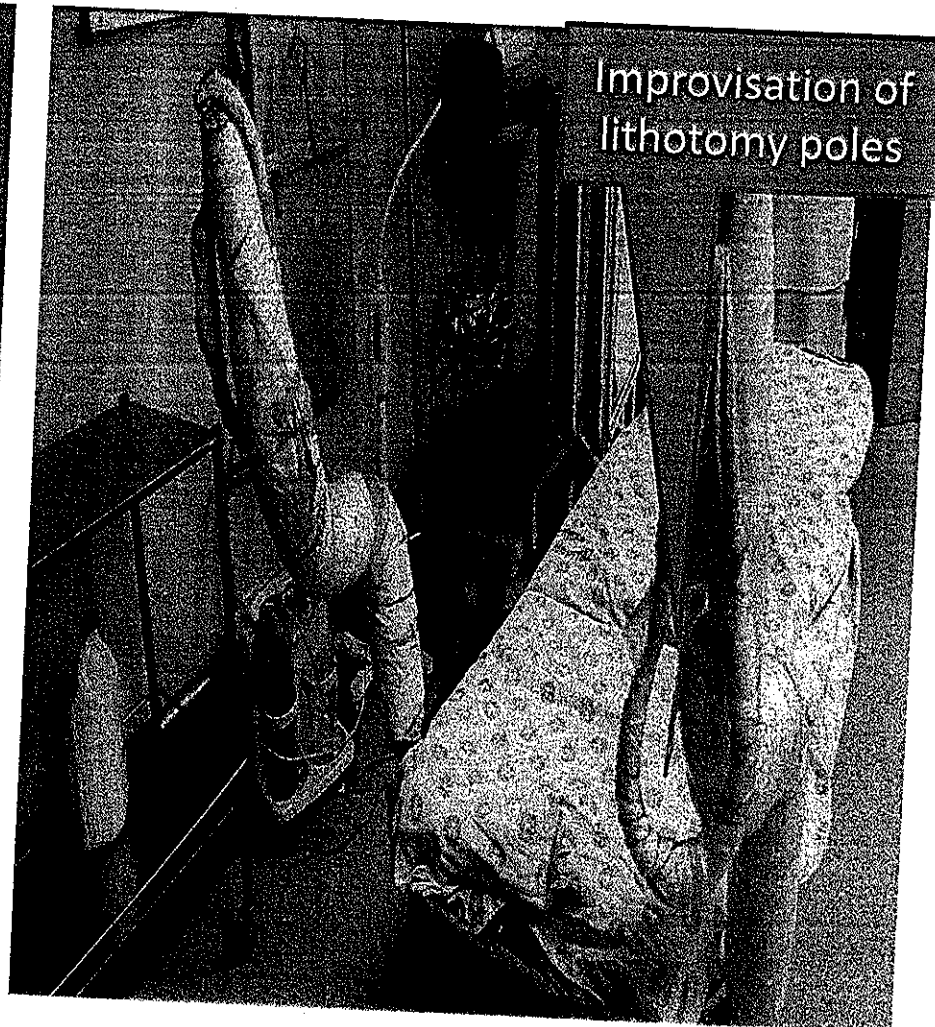
***No triage followed***



# Patient Safety compromised



Improvisation of  
lithotomy poles



Improvisation of  
lithotomy poles

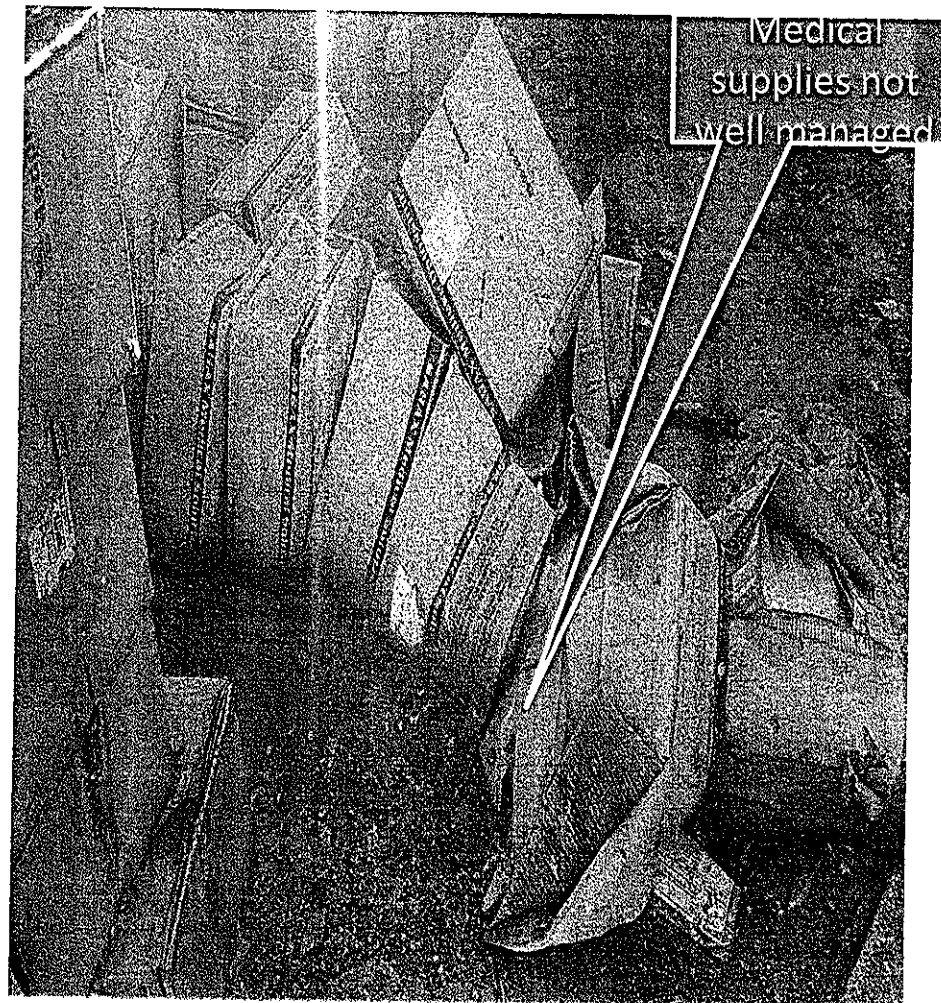
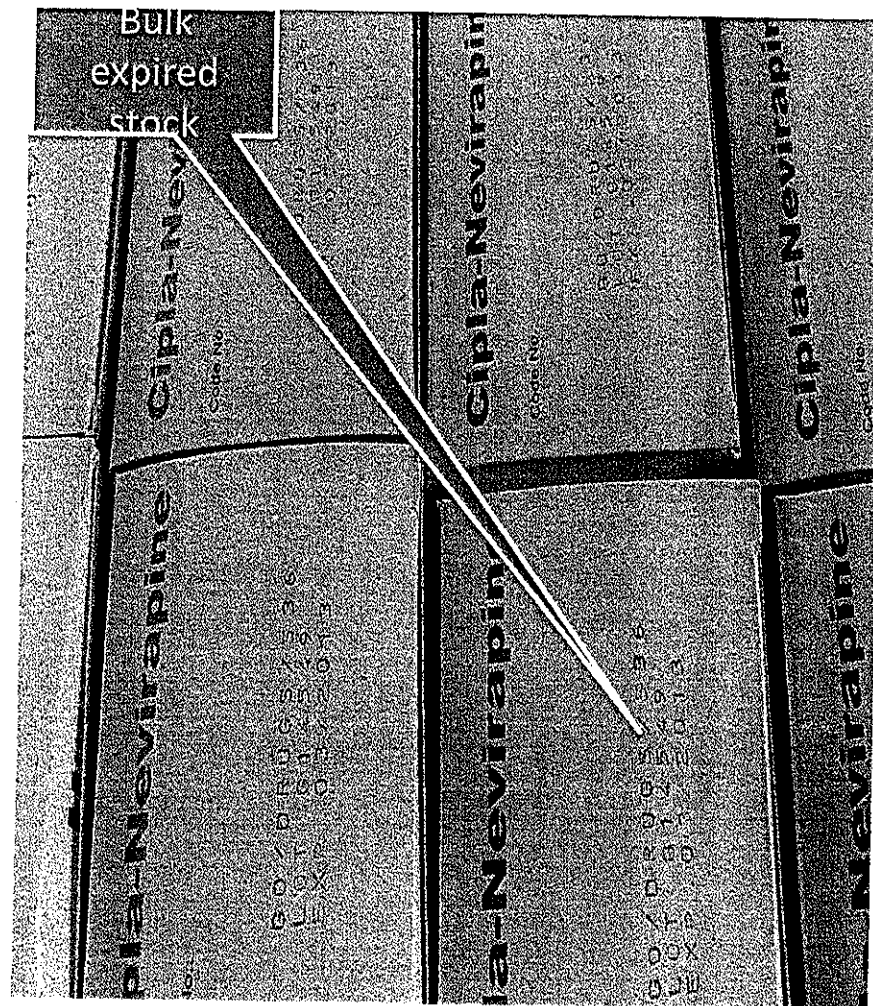
  
**OHSC**

Office of Health Standards Compliance  
Ensuring quality and safety in healthcare

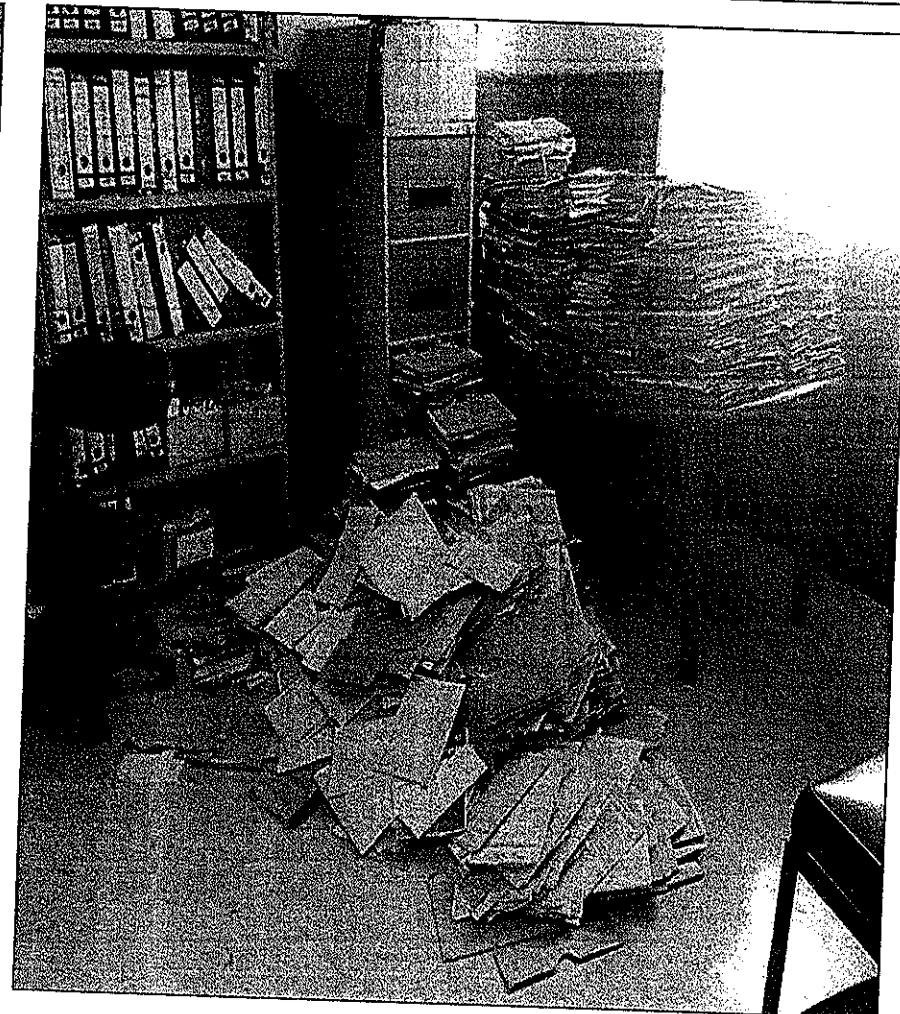
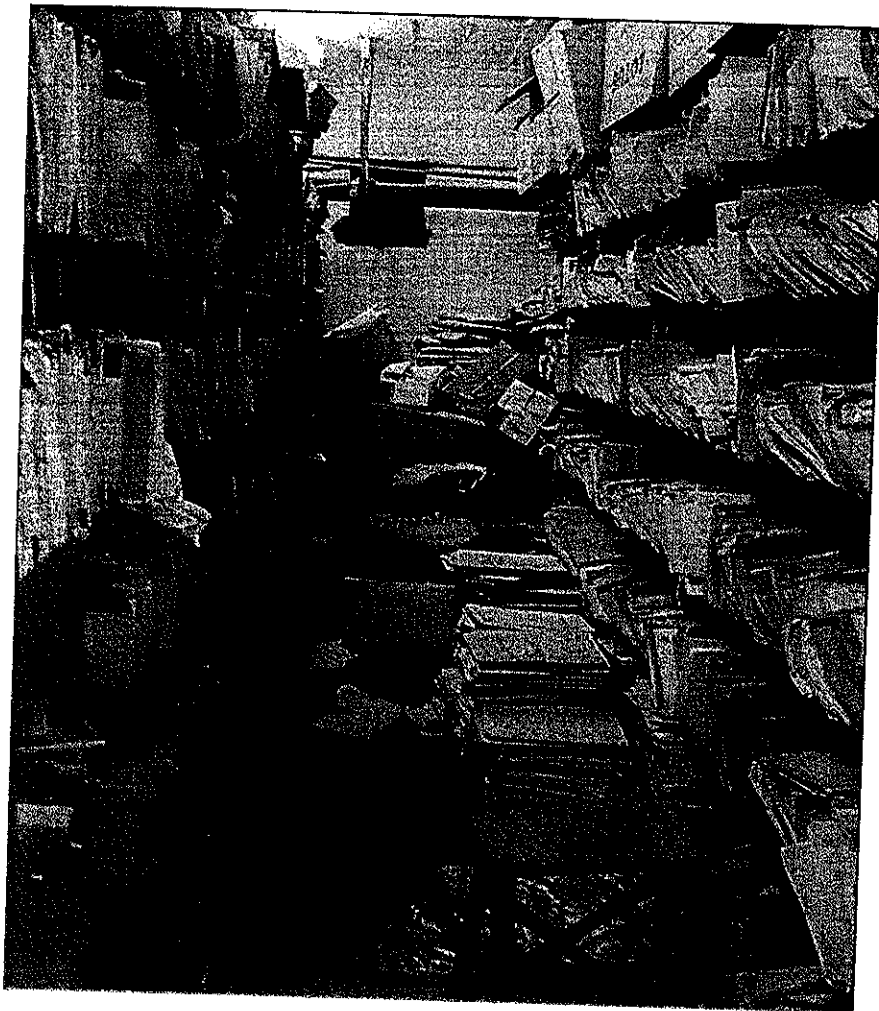
Office of Health Standards Compliance  
Promoting quality and safety in health care



# *Good Pharmacy Practice not followed*



# *Poor storage of medical records*

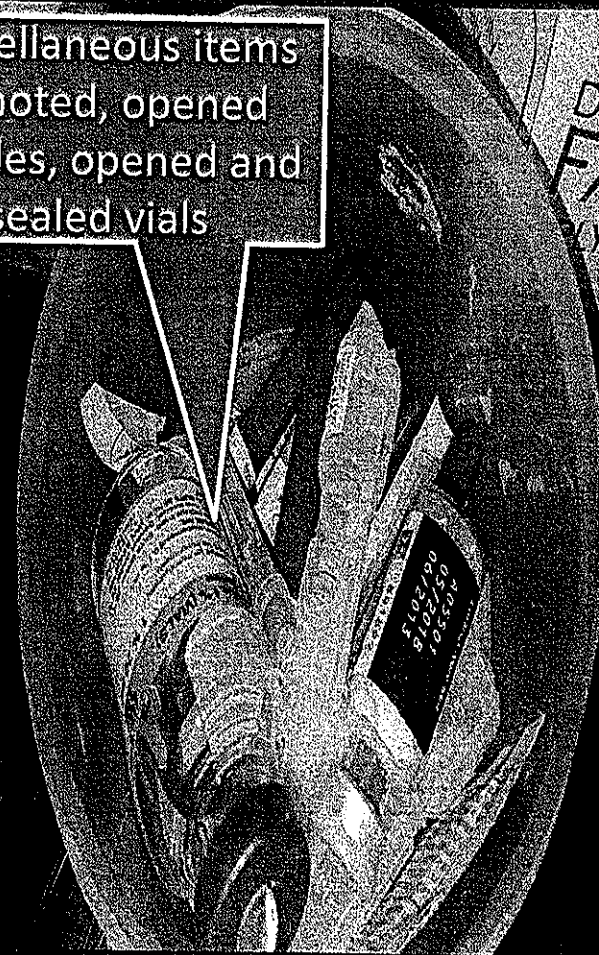


# *Sharps not safely handled and disposed of correctly*

Box used for disposing  
syringes and vials

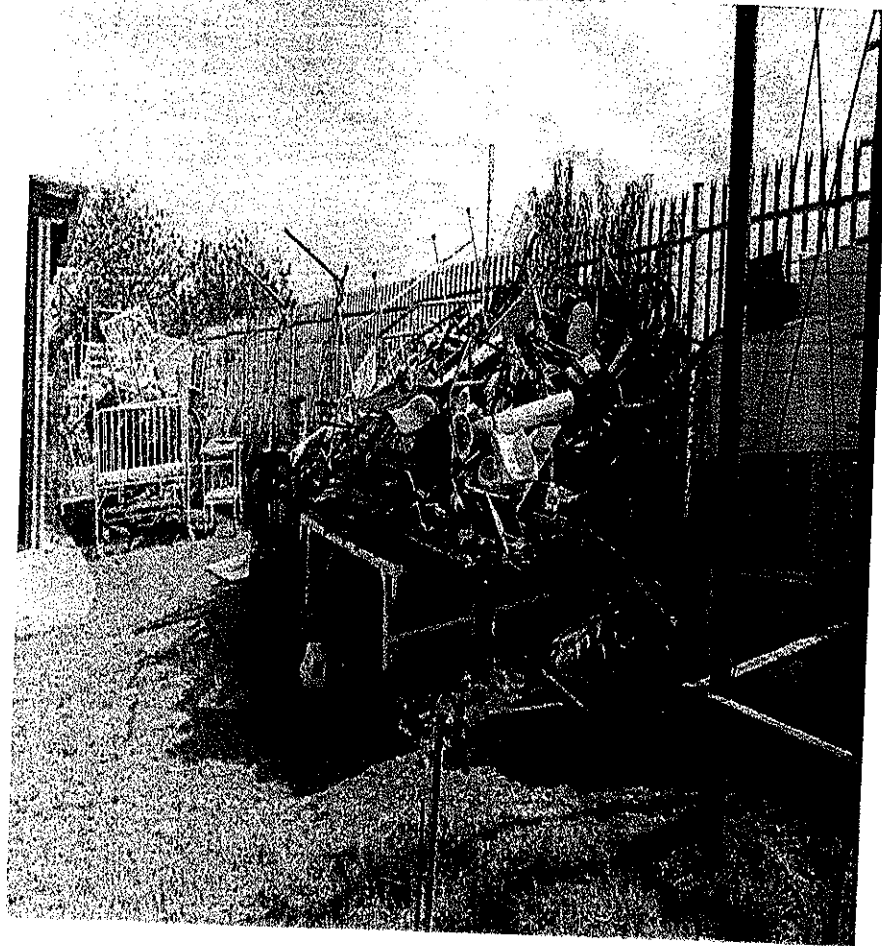


Miscellaneous items  
as noted, opened  
needles, opened and  
sealed vials





# *Redundant furniture/medical equipment not disposed*

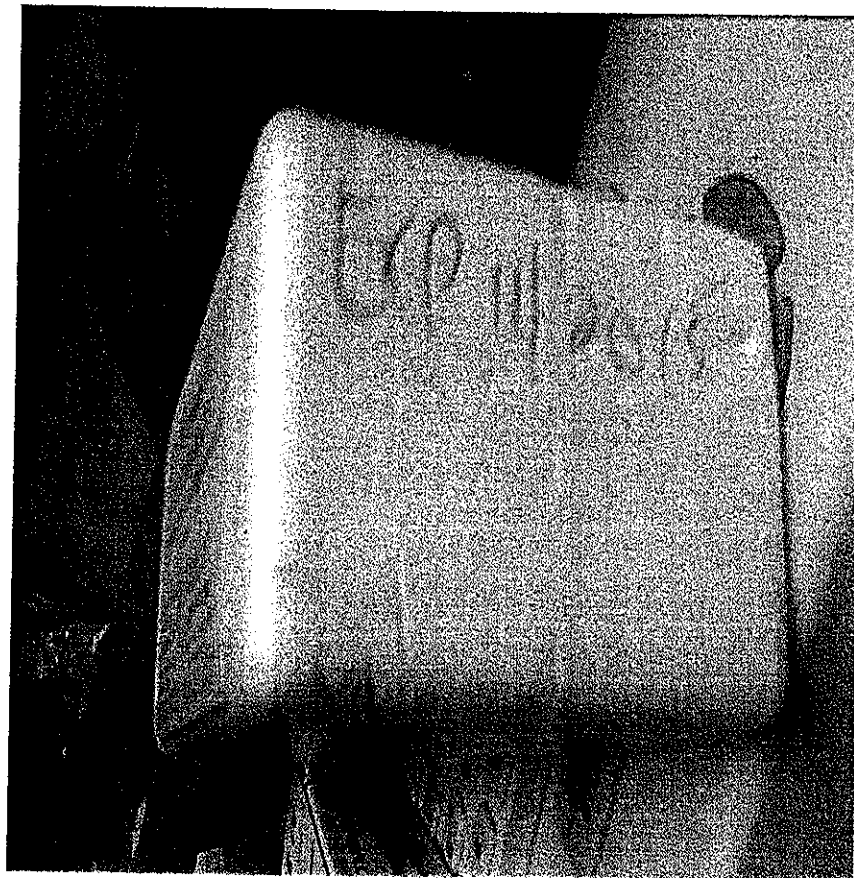
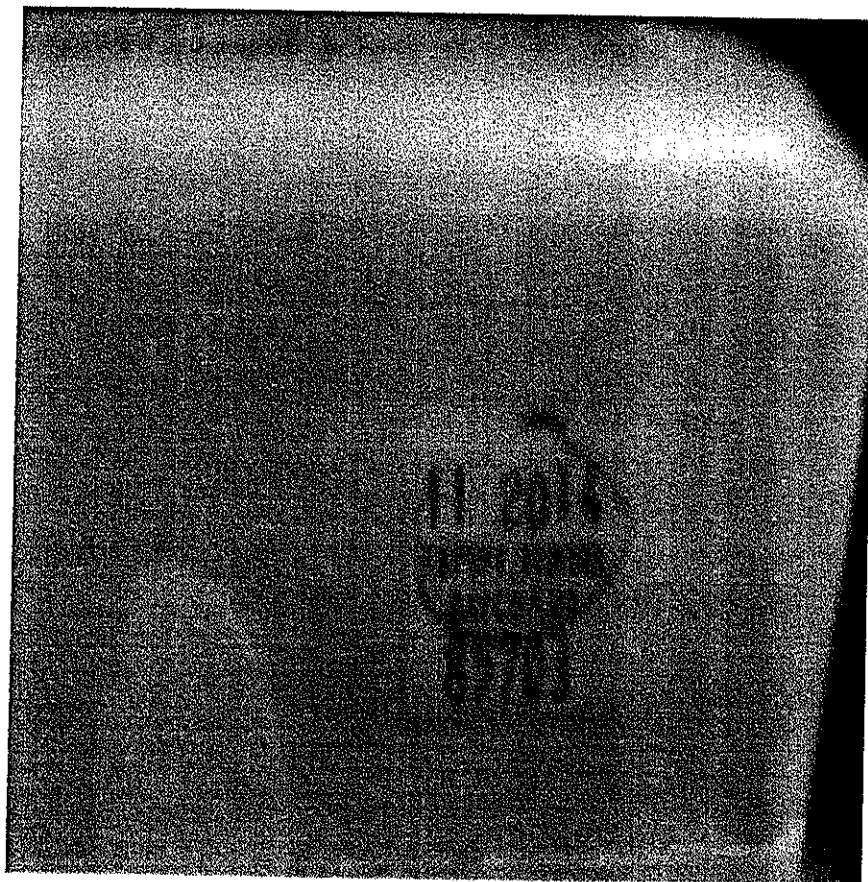




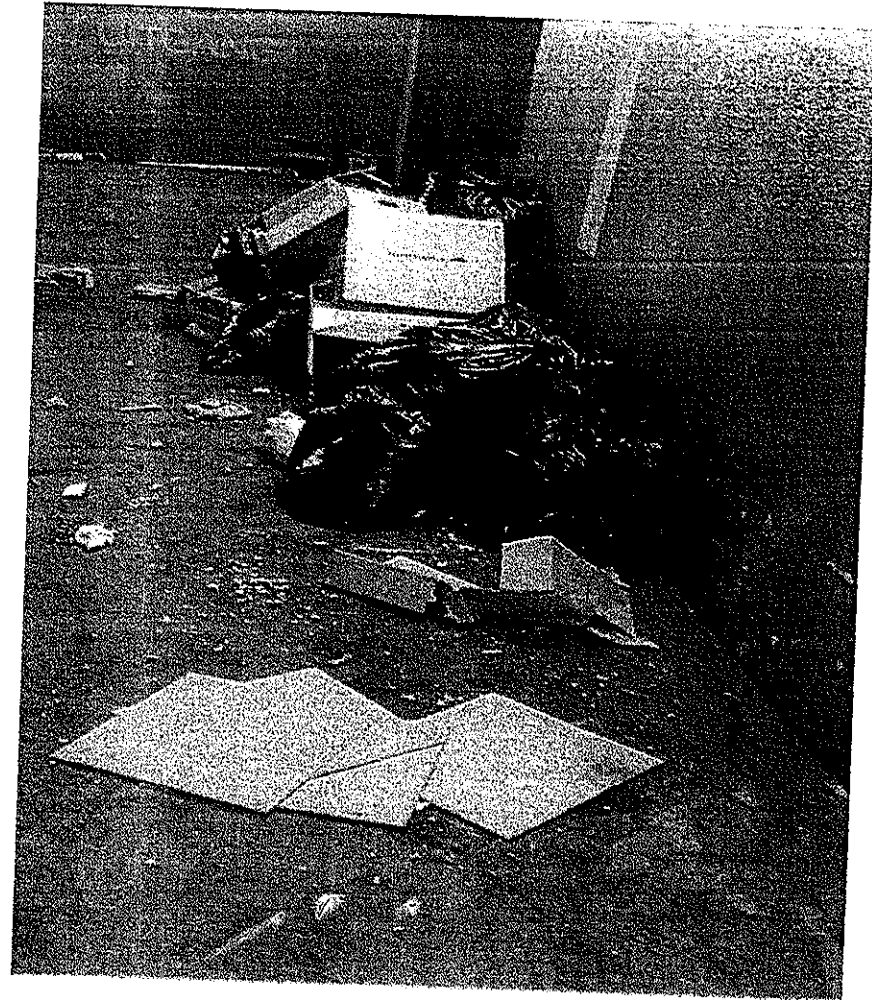
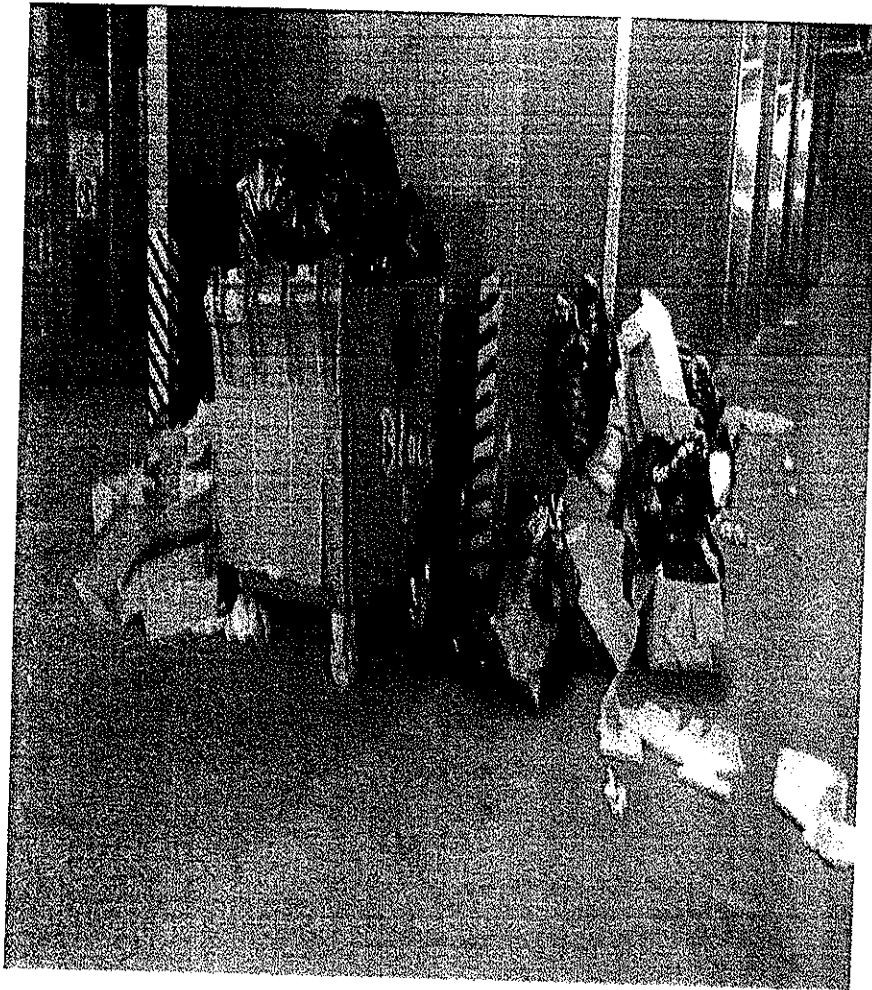
# *Gaming of the system-compromised patient safety*

*Exp 11/2014*

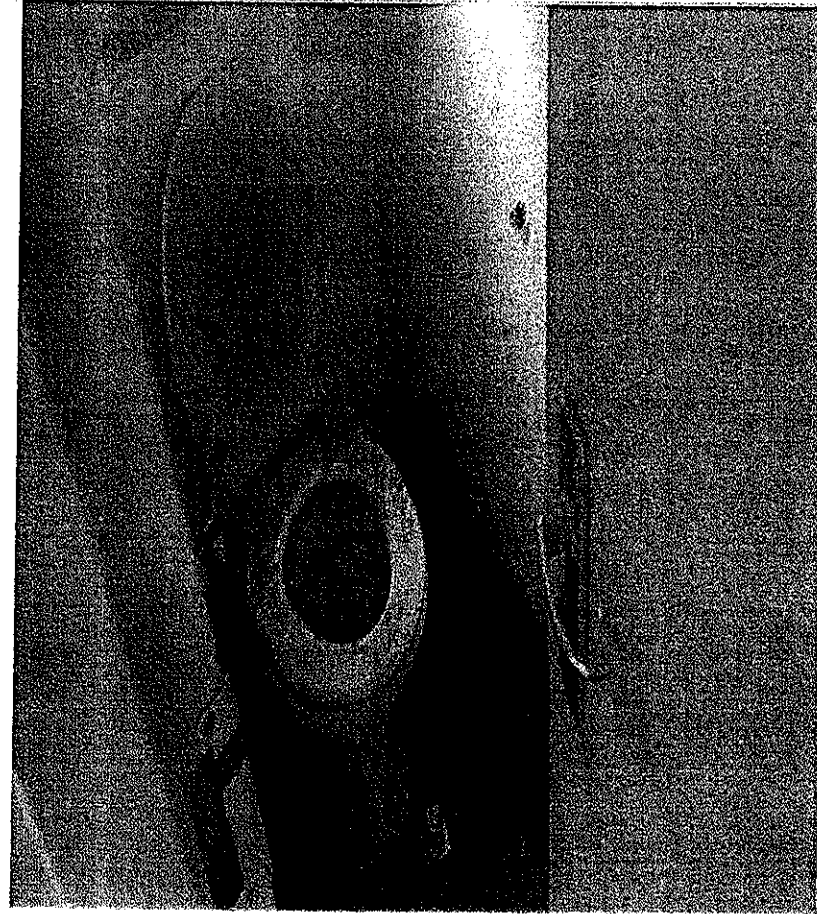
*Exp changed to 11/2015*



## *Poor disposal and storage of general waste*



# *Cleanliness compromised*

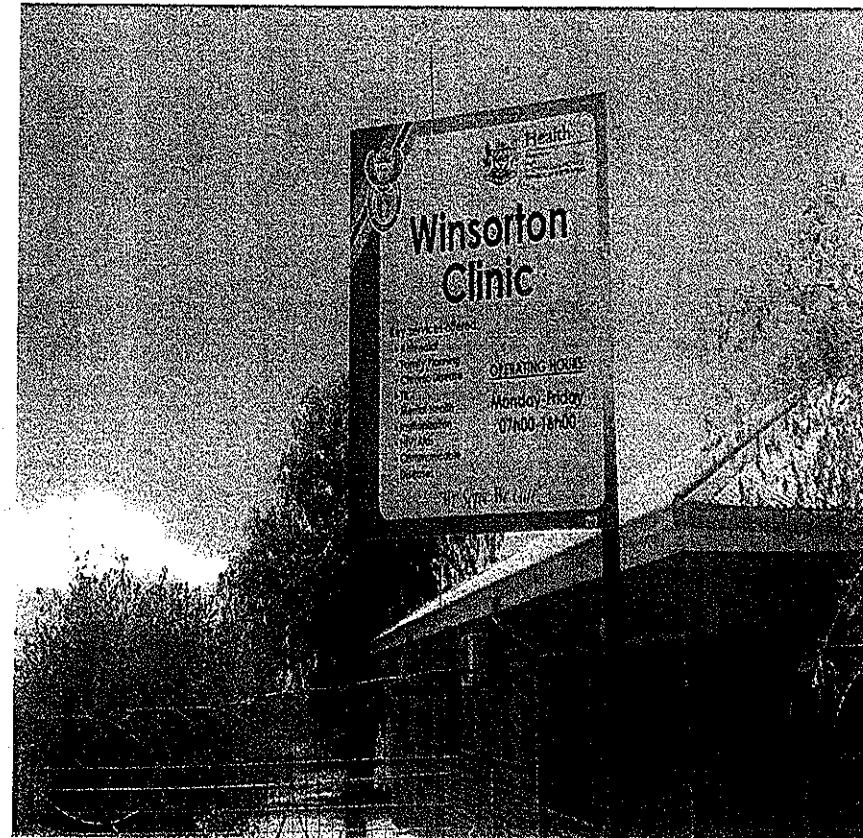
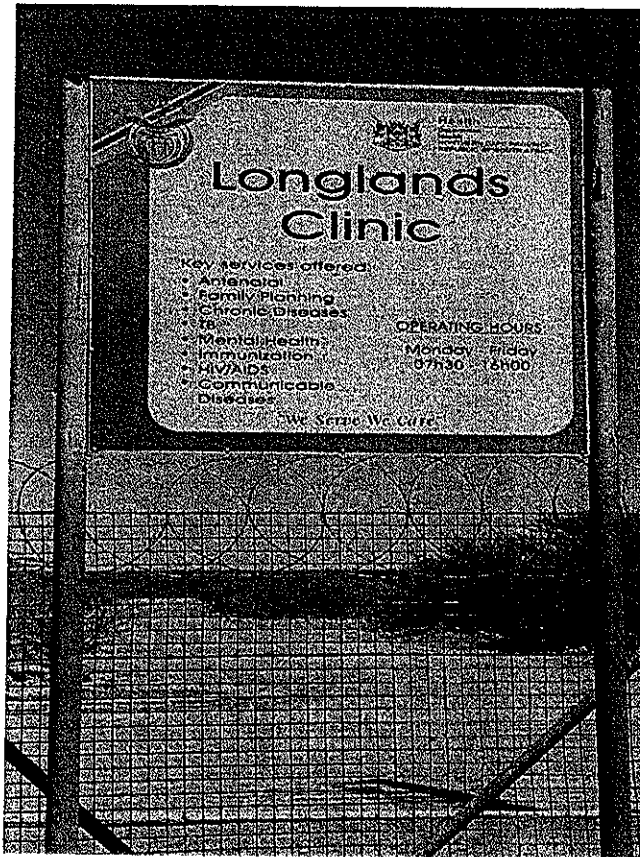




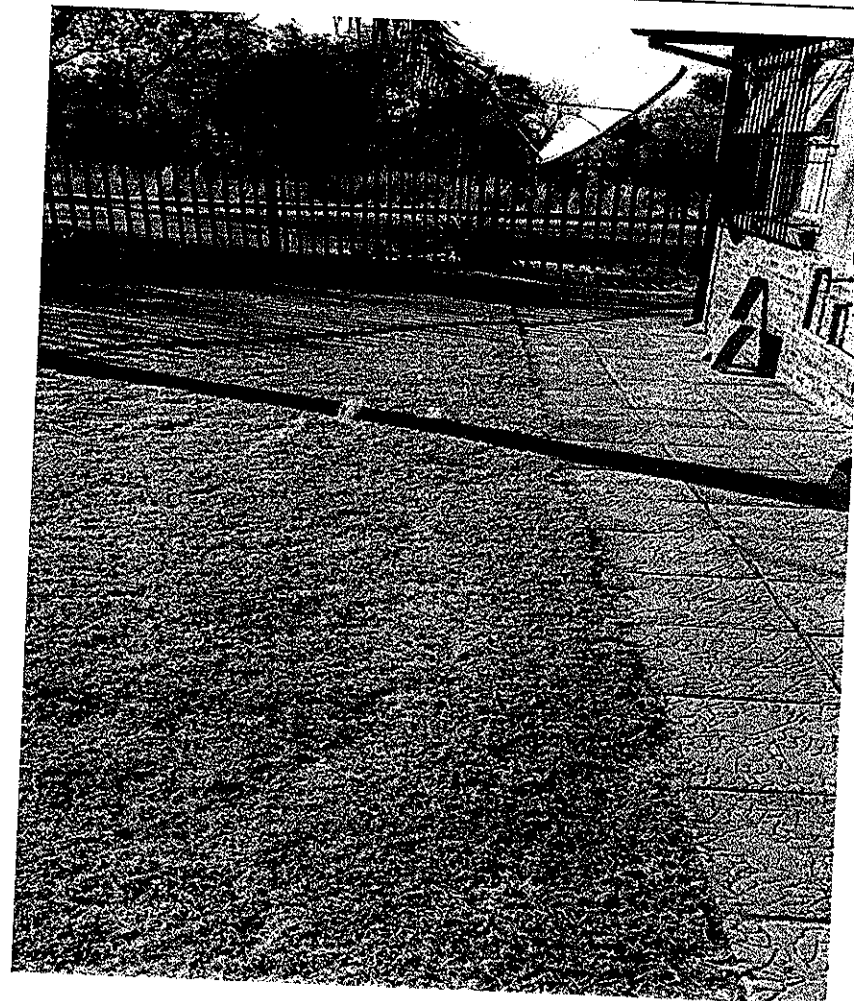
# ***MANAGEMENT & MAINTENANCE SUPPORT***



# Access to package of service promoted Commendable

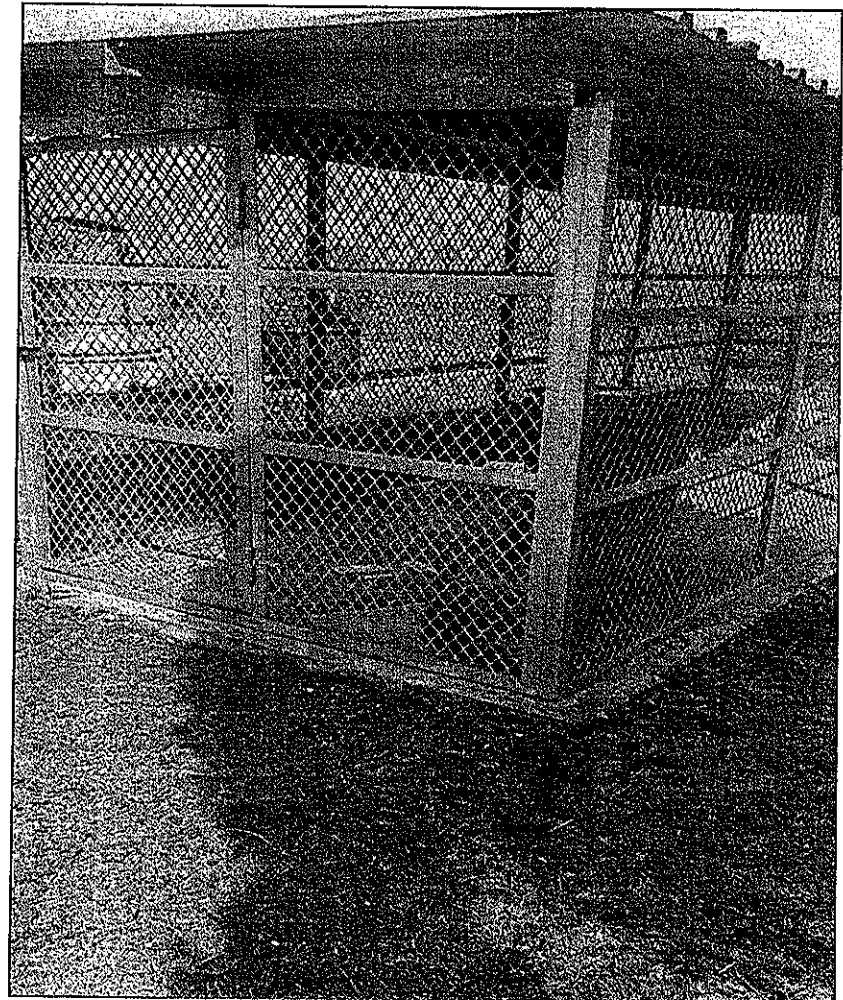
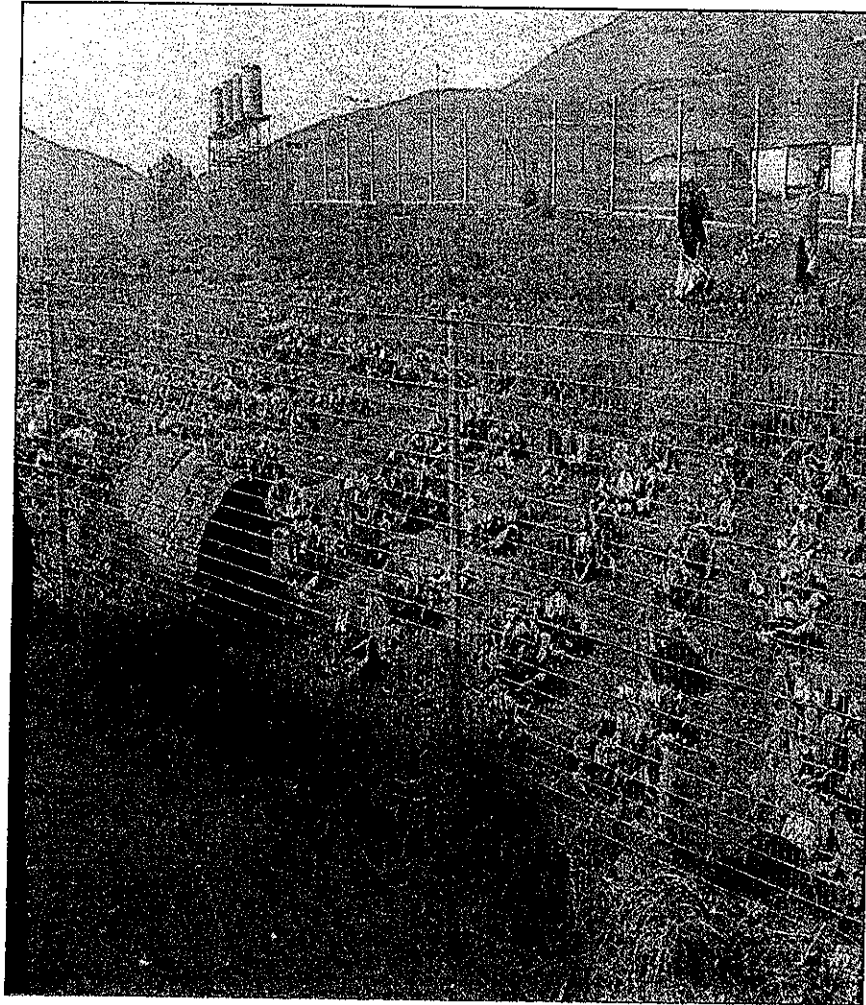


# *Grounds well maintained*



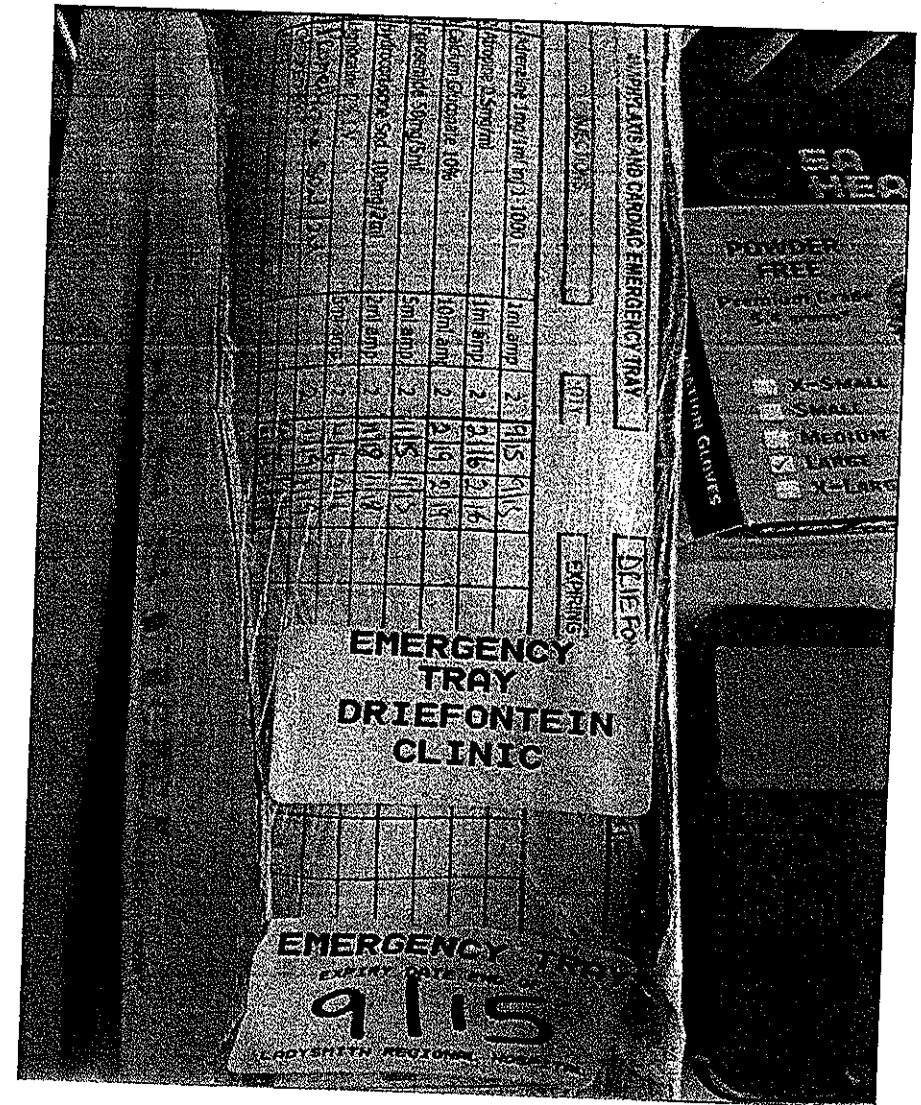
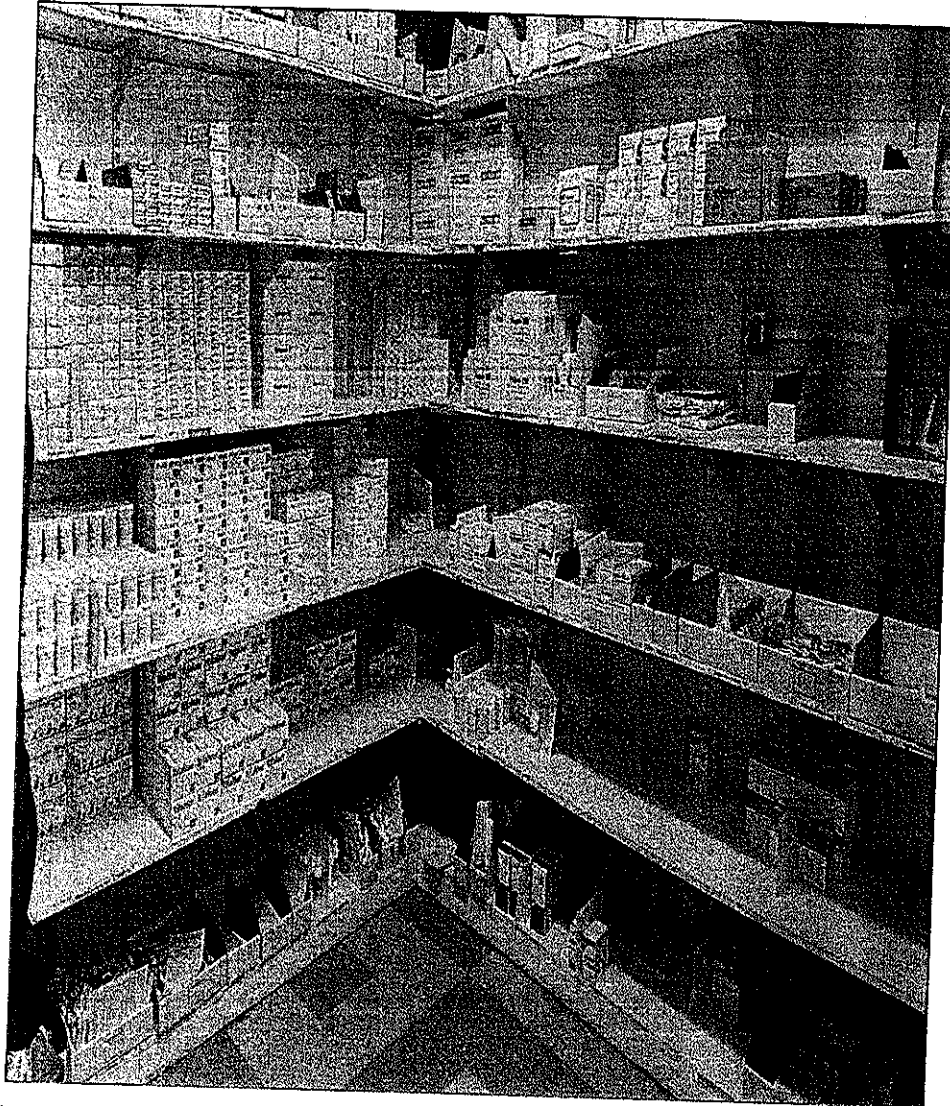


# COMMENDABLE

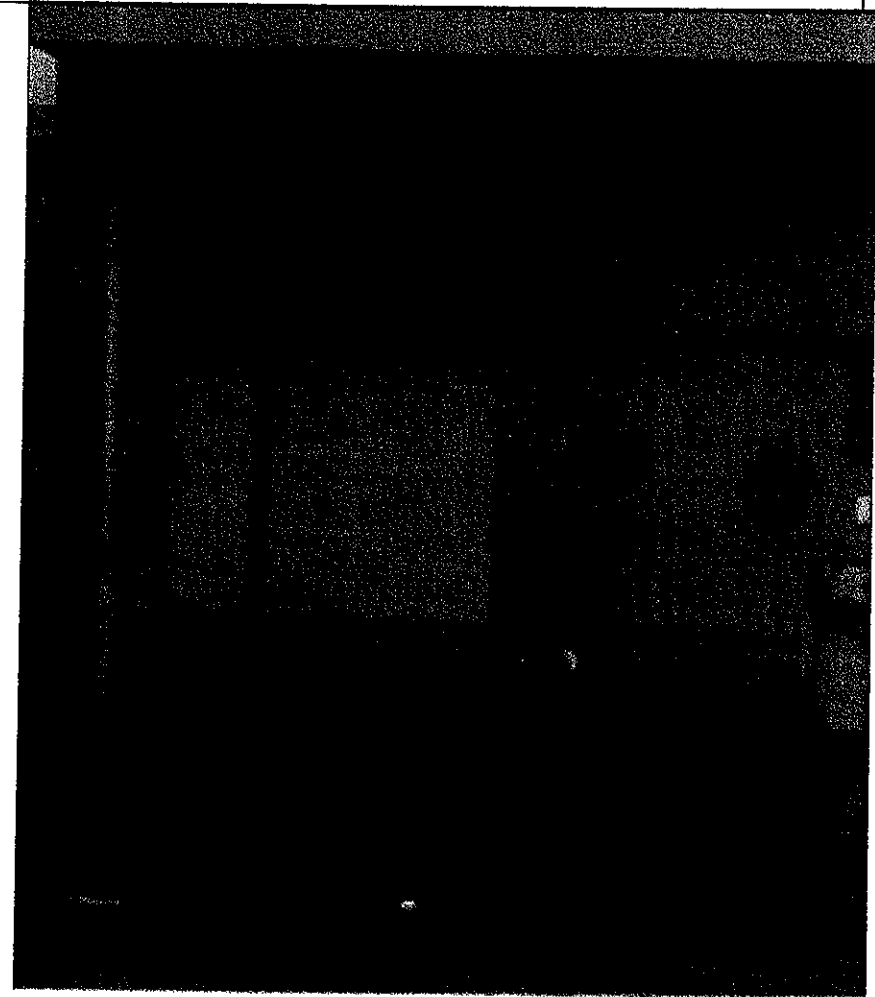




# Commendable Practice



## *Signage on access road ( commendable)*

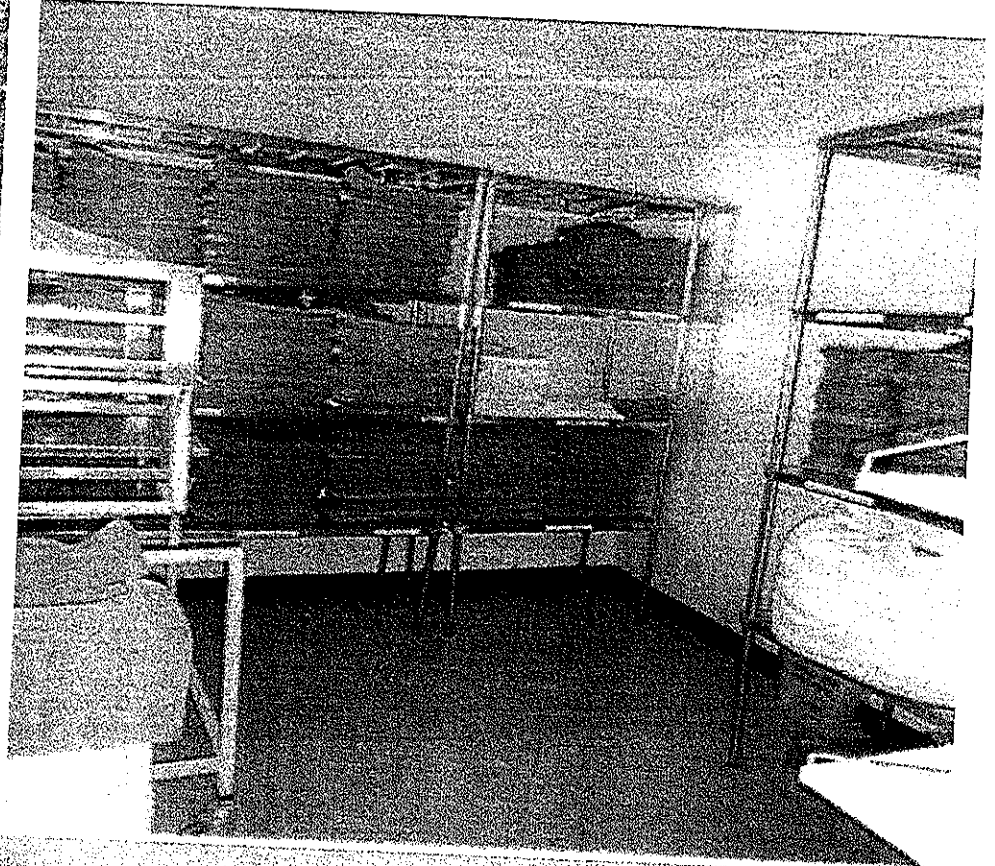


# COMMENDABLES

*Clean facilities*



*Clean facilities*



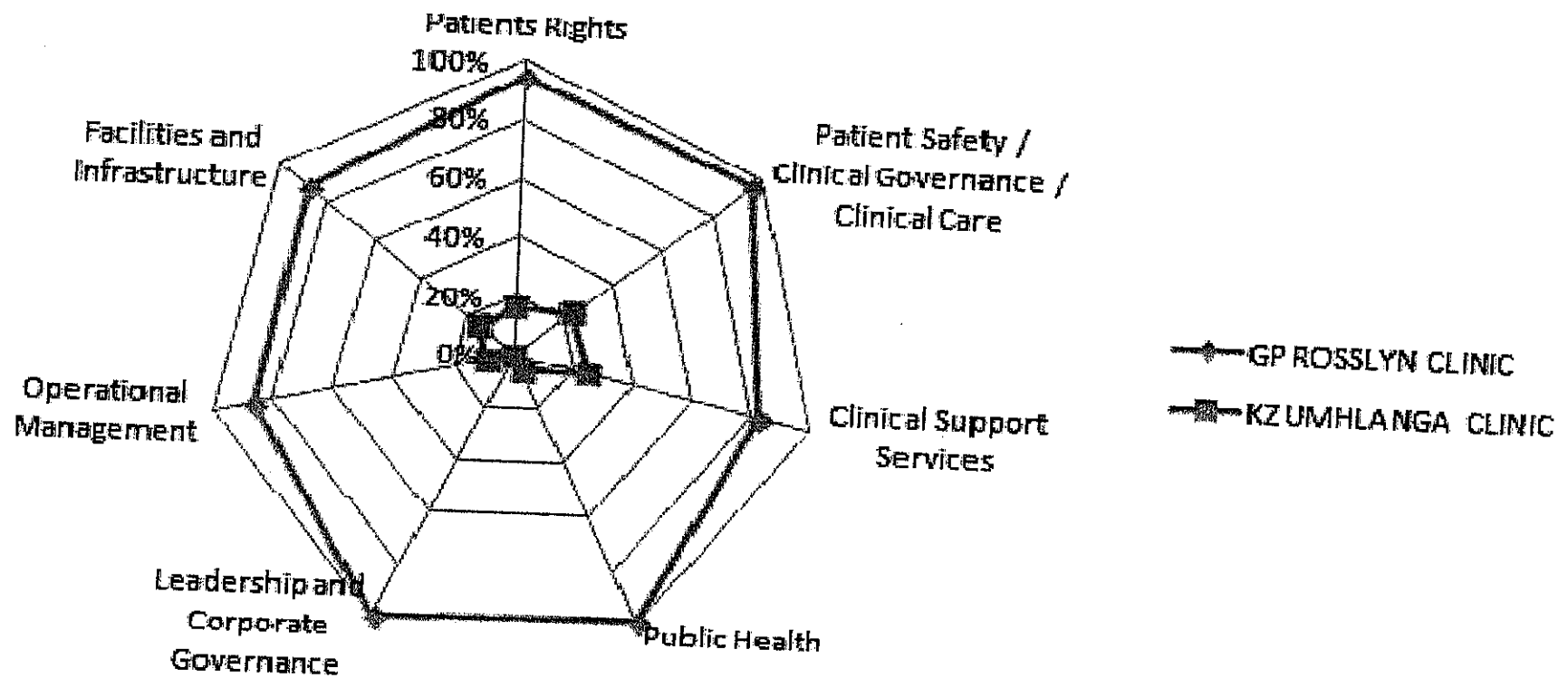
# ***COMPLIANCE JUDGEMENT FRAMEWORK***



EC	FS	GP	KZN	LP	MP	NW	NC	WC
		• 5 Clinics • 3 General	• 2 Regional • 1 Central			• 1 Provincial		• 1 Central
	• 1 Regional • 1 District	• 2 Clinics • 2 District • 1 Central	• 1 District • 1 Regional		• 1 District		• 1 Clinic	• 1 Clinic • 2 District • 1 Central
• 5 Clinics	• 1 Clinic • 1 District • 1 Central	• 9 Clinics • 1 District • 1 Provincial	• 5 Clinics • 1 CHC • 1 District	• 1 District • 1 Regional • 1 Provincial		• 4 Clinics • 1 District	• 2 Clinics	• 3 Clinics
• 3 Clinics • 2 CHC	• 8 Clinics • 3 District • 1 Regional	• 2 Clinics • 1 District	• 15 Clinics	• 1 District	• 3 Clinics • 1 District	• 11 Clinics • 1 CHC • 1 District	• 7 Clinics • 1 Regional	• 8 Clinics
• 40 Clinics • 1 CHC	• 8 Clinics	• 1 Clinics	• 10 Clinics	• 43 Clinics • 2 CHC • 1 District	• 15 Clinics • 2 CHC	• 20 Clinics • 1 CHC	• 12 Clinics • 1 CHC • 1 District	• 8 Clinics

# ***COMPARISON- BEST AND WORST PERFORMANCE***

# BEST AND WORST CLINICS





# WORST HOSPITAL: FUNCTIONAL AREA DASHBOARD

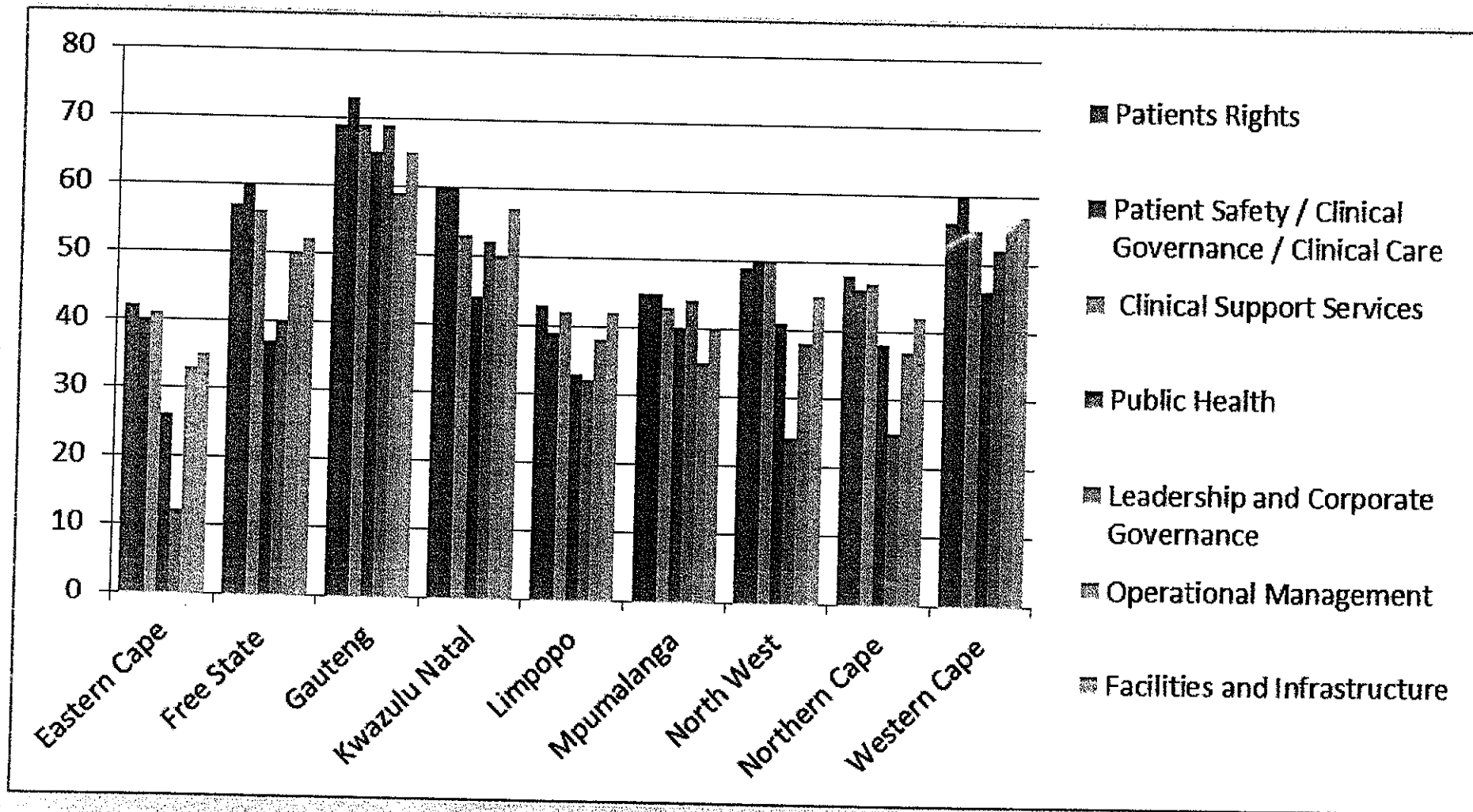
NC DE AAR (CENTRAL KAROO) HOSPITAL

OVERALL PERFORMANCE 37%

Components	Functional Areas											
Management					Infection control							
Clinical services					Pharmacy		Radiology					
Patient care					Maternity ward incl. Maternity theatres		Medical ward	Surgical ward	Paediatric ward	Operating theatre		
Support services				Laundry Services	Record/archive department		Waste Management	Entrance/reception/helpdesk		Patient admin	Mortuary services	Public Areas

# ***CLINICS PERFORMANCE***

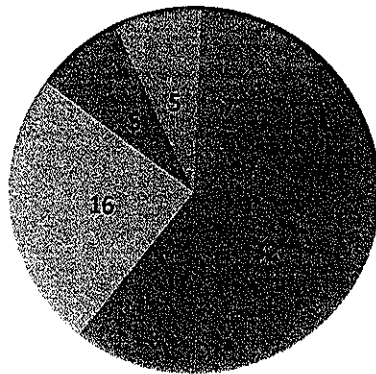
# CLINICS\_DOMAINS



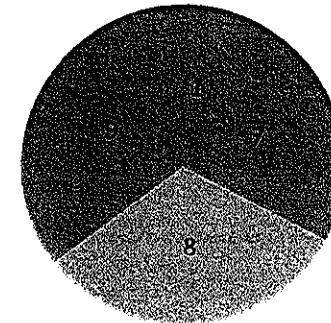
# EASTERN CAPE AND FREE STATE CLINICS

**Eastern Cape Clinics Performance scores (65 Inspected)**

**Free State Clinics Performance scores (25 Inspected)**



■ 20-29%  
■ 30-39%  
■ 40-49%  
■ 50-59%  
■ 60-69%



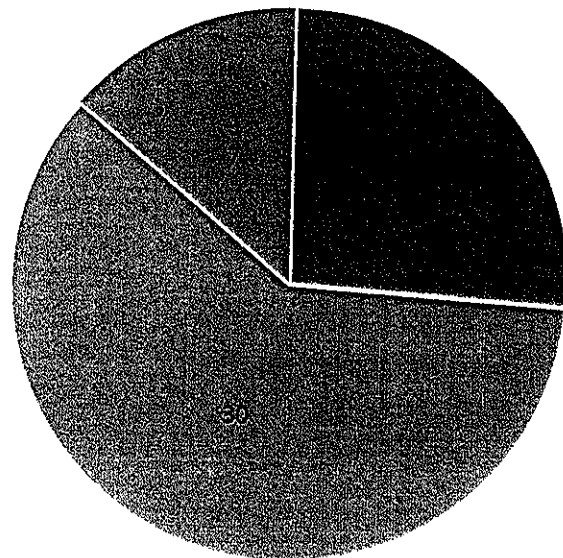
■ 20-29%  
■ 30-39%  
■ 40-49%  
■ 50-60%

Number of clinics per  
score category

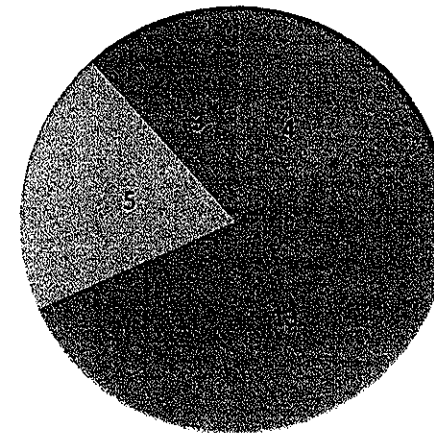


# LIMPOPO AND MPUMALANGA CLINICS

**Limpopo Clinics Performance score (50 Inspected)**



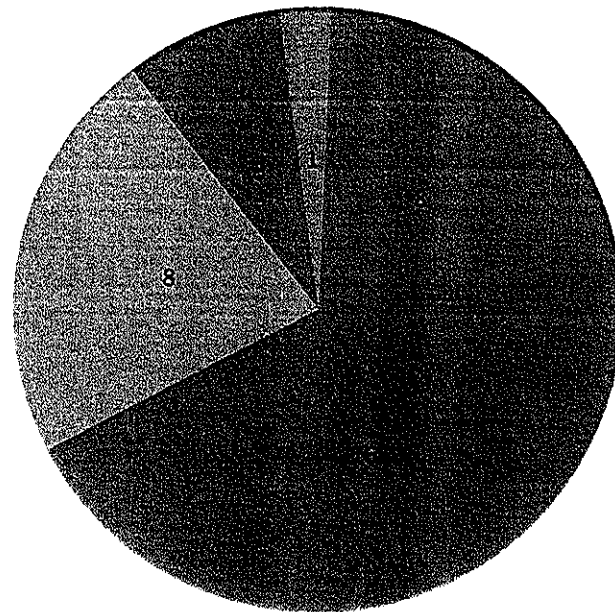
**Mpumalanga Clinics Performance scores (25 Inspected)**



**Number of clinics per score  
category**

# WESTERN CAPE CLINICS

## Western Cape Clinics Performance Scores (36 inspected)



■ 30-39%

■ 40-49%

■ 50-59%

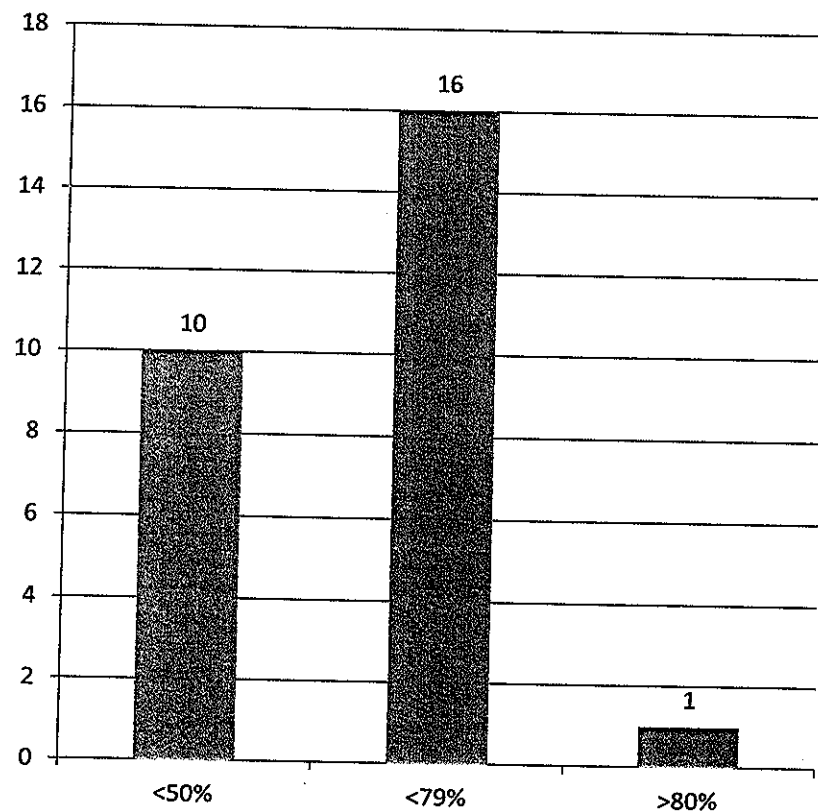
■ 60-69%

■ 70-79%

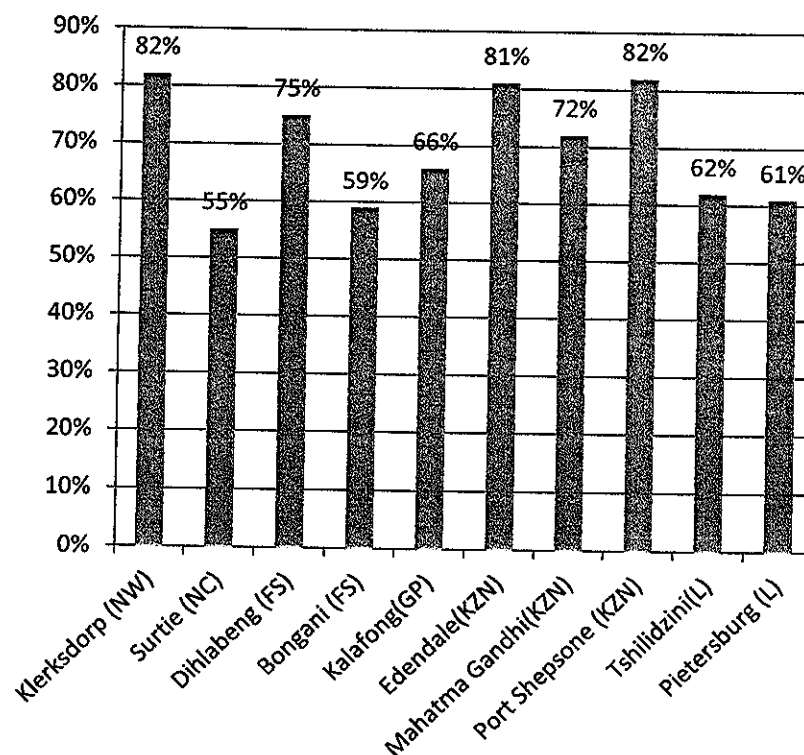
Number of clinics per score  
category

# HOSPITAL PERFORMANCE 14/15

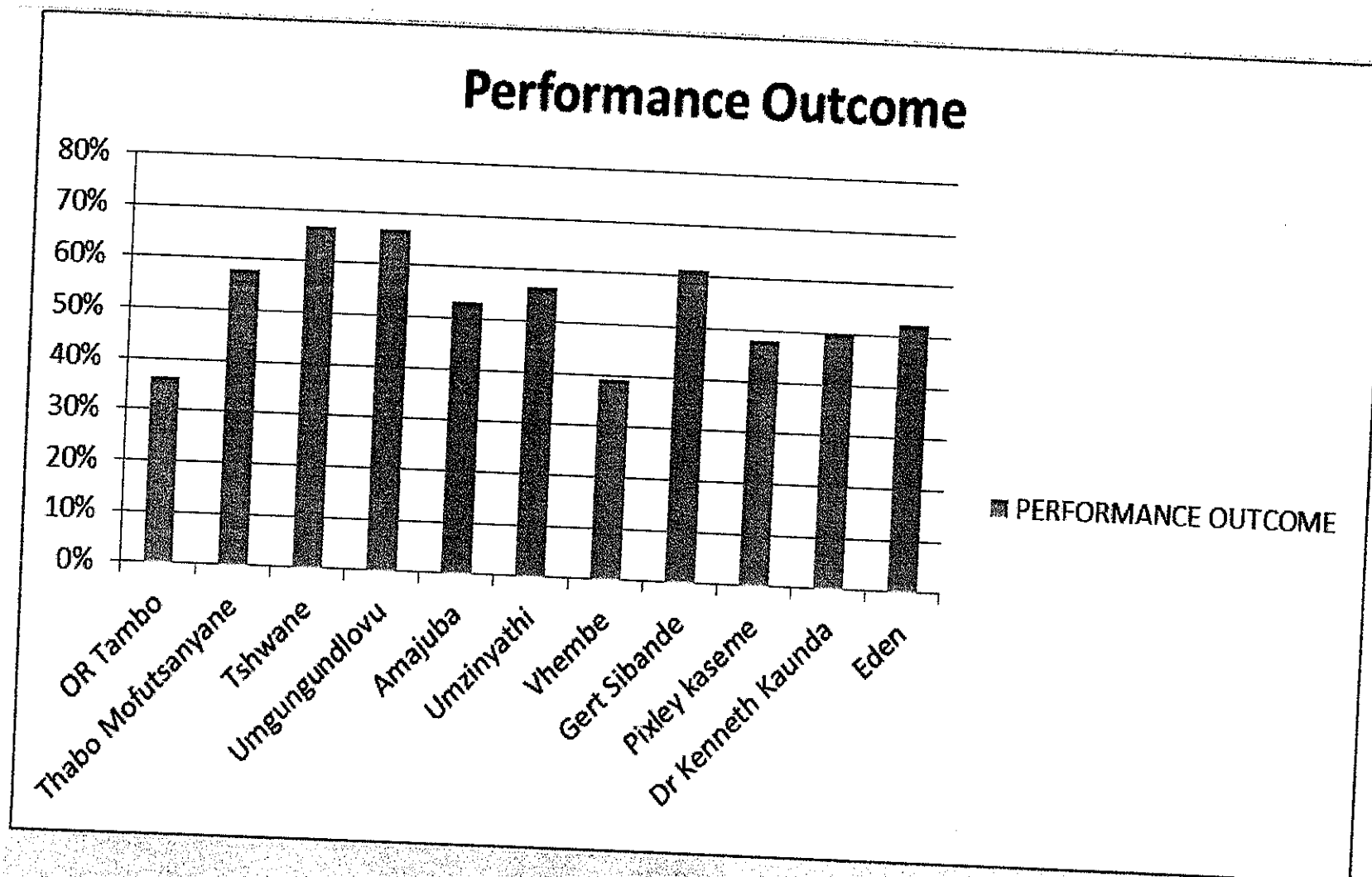
## DISTRICT HOSPITAL PERFORMANCE



## TERTIARY AND REGIONAL HOSPITALS PERFORMANCE

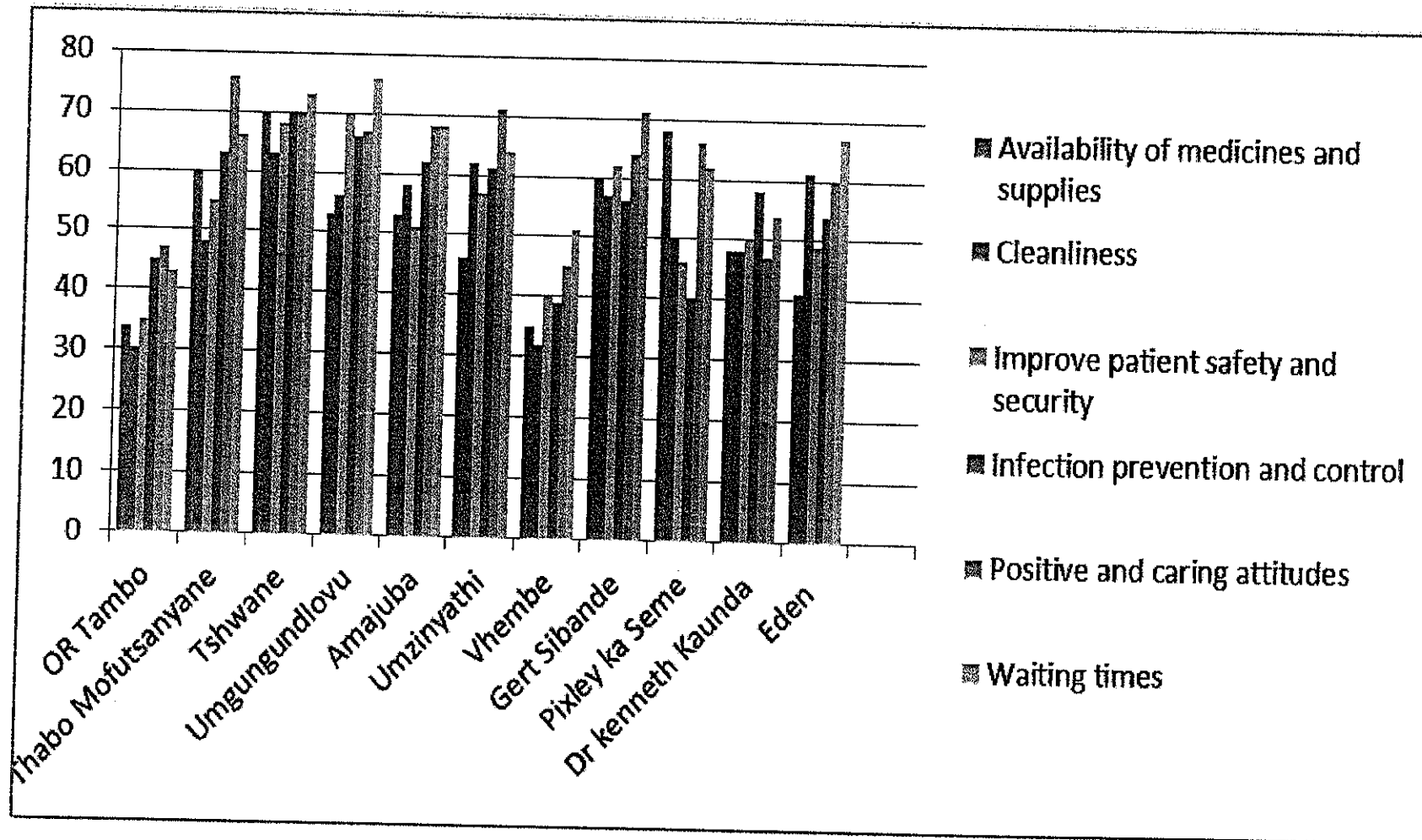


# PILOT DISTRICTS PERFORMANCE



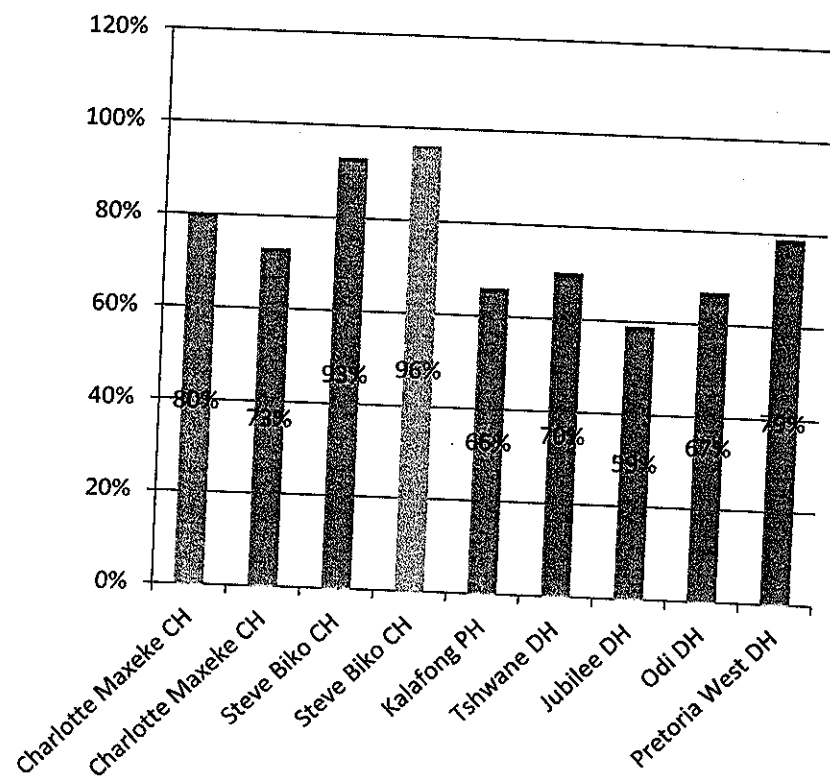


# PILOT DISTRICTS\_PRIORITY AREAS

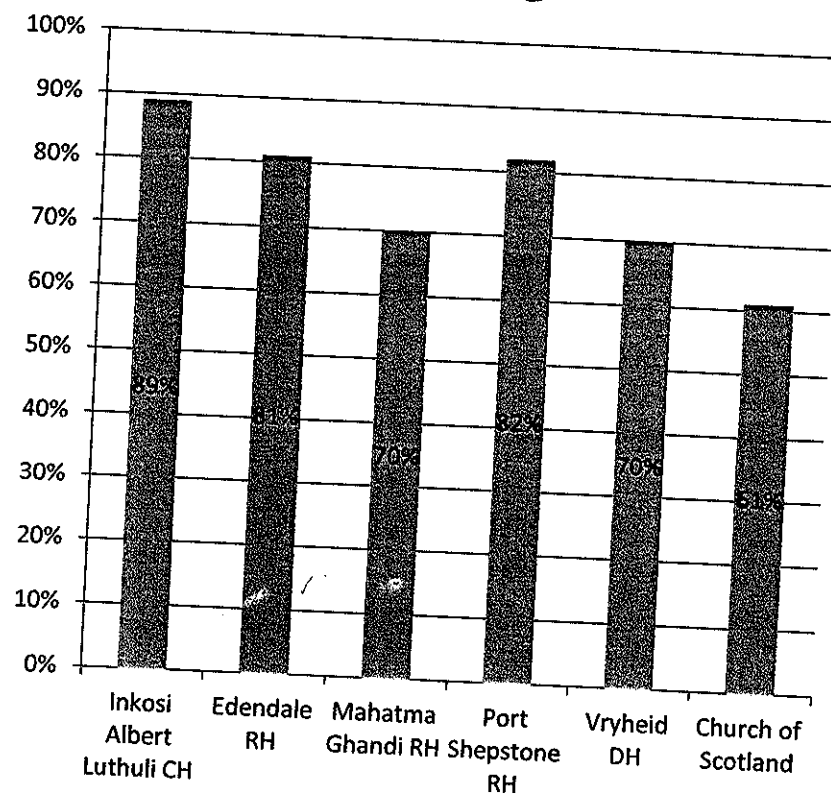


# GAUTENG AND KZN HOSPITALS

## GAUTENG HOSPITALS

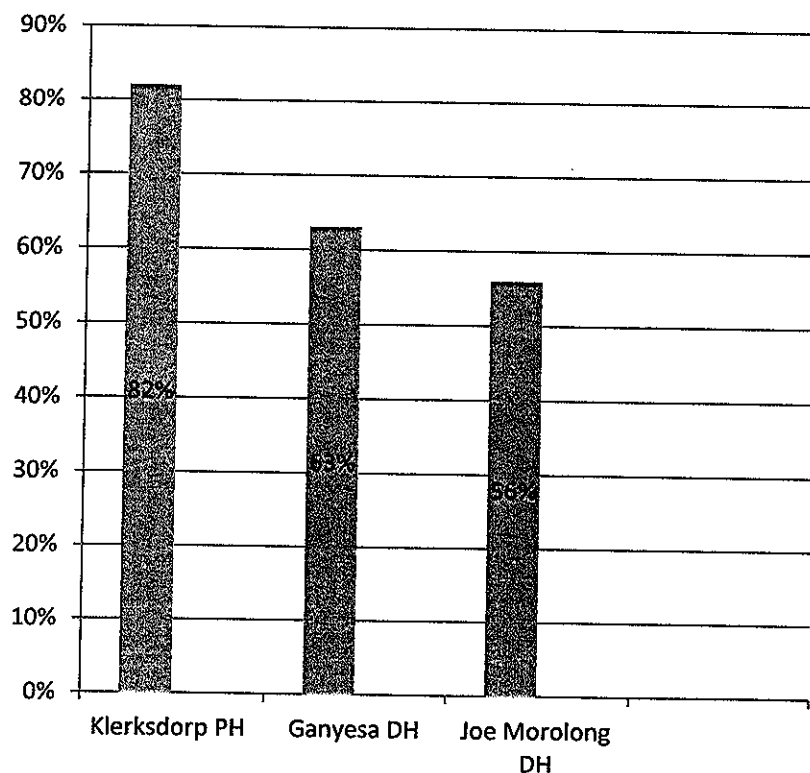


## KZN HOSPITALS



# NORTH WEST AND WESTERN CAPE HOSPITALS

## NORTH WEST HOSPITALS



## WESTERN CAPE HOSPITALS

