

# THE HOUSEHOLD FOOD AND NUTRITION SECURITY PROGRAMME

PRESENTATION TO PORTFOLIO COMMITTEE ON  
AGRICULTURE FORESTRY & FISHERIES  
02 – 03 FEBRUARY 2016

Building a Caring Society Together.

www.dsd.gov.za



social development  
Department:  
Social Development  
REPUBLIC OF SOUTH AFRICA



## Presentation outline

- Background
- Context
- DSD Food Security Interventions -Breaking the cycle of inter-generational poverty
- Social Development Sector Food and Nutrition Security Interventions & resources allocation
- The food distribution model
- Integrated Model for the Radical Economic Transformation Programme
- Scope of food & nutrition security interventions within DSD
- Estimated expenditure of DSD feeding & food distribution programmes
- Progress on Food Distribution Centres establishment
- Programme funding & work opportunities created
- Food Safety & Quality Assurance measures within PFDCs & CNDCs
- Challenges
- Recommendations

Building a Caring Society Together.

www.dsd.gov.za



social development  
Department:  
Social Development  
REPUBLIC OF SOUTH AFRICA



## Background

- Cabinet approved the National Policy on Food & Nutrition Security (NPFNS) together with The Household Food and Nutrition Strategy in September 2013.
- DSD Mandate is amongst many deliverables expected to ensure that the poor and vulnerable members of society have access to food and ensure, proper feeding of children in ECDs, establish a robust network of Food Distribution Centres
- An integrated interdepartmental committee comprising DOH, DOE, COGTA, DPME, DRDLR, DOSB, DAFF, DOED, civil society organizations, and academia, co-chaired by DSD and DAFF was established to coordinate implementation of the Policy and Strategy.
- In 2014 an initial Food and Nutrition Security Integrated implementation plan was developed, which was followed by Operation Phakisa to refine the plan in 2015 lead by DPME

Building a Caring Society Together.

www.dsd.gov.za



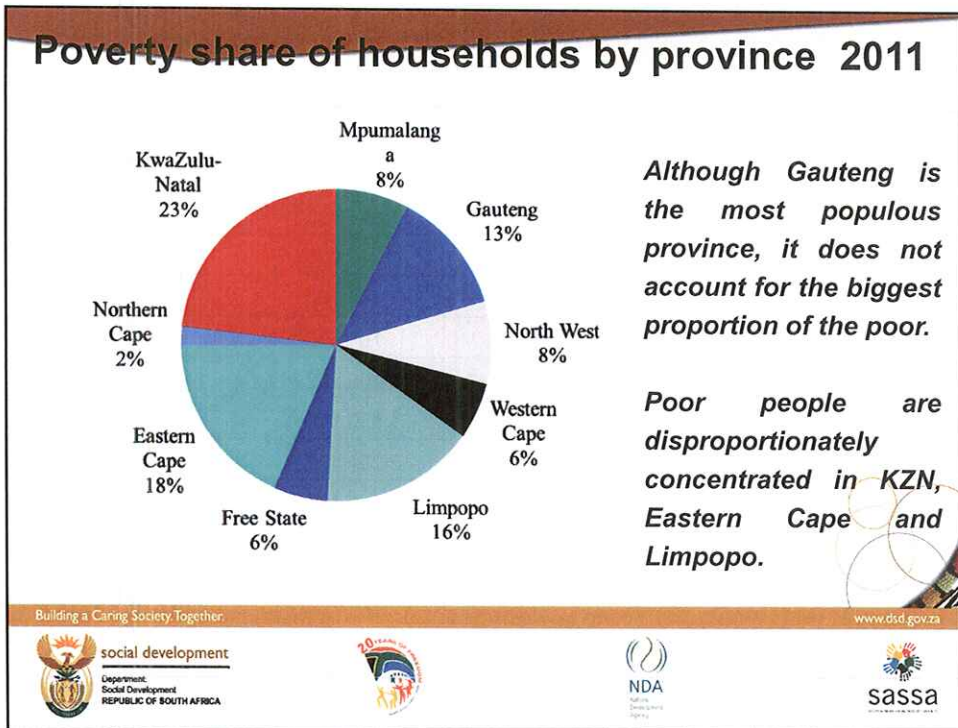
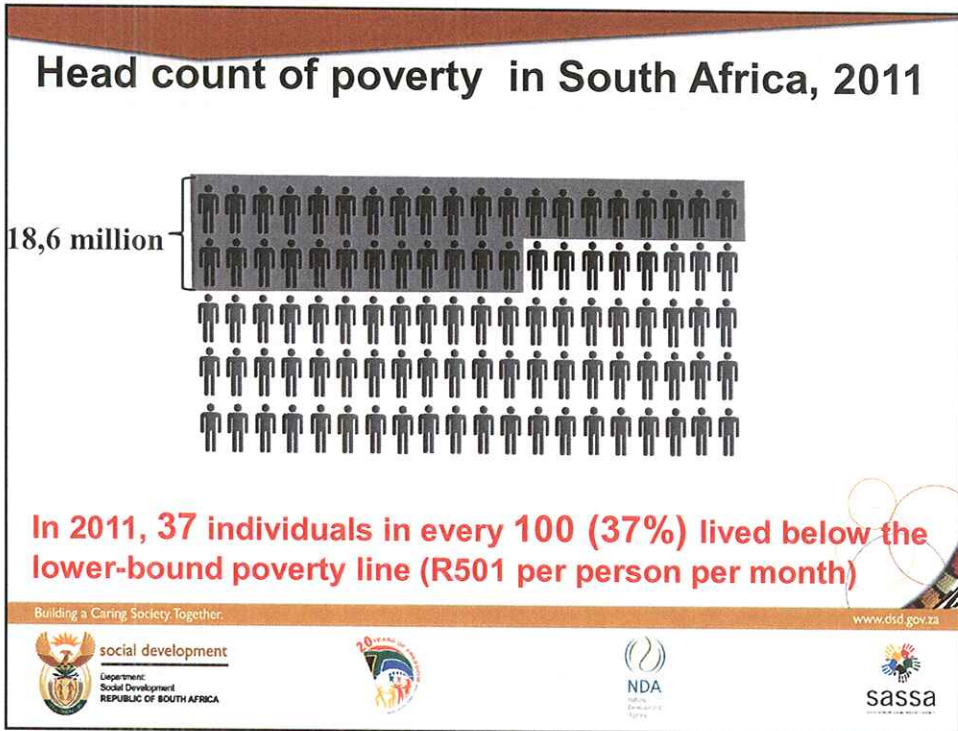
## Background (Cont....)

- DSD implementation of the food and nutrition security take cognoscente of the President SONA Pronouncement: "Our economy needs a major push forward" ... Pres. JZ (SONA, 2015)
- Need to accelerating radical socio-economic transformation to boost the economy
- The minister announced DSD approach to contribute to radical socioeconomic transformation leveraging on the social assistance and food and nutrition security programmes
- Three outcomes form basis for the implementation of this programme ( poverty, unemployment, hunger and malnutrition status in the country)

Building a Caring Society Together.

www.dsd.gov.za







### Food Access & Affordability

- SA has **enough food available** for the whole population but access is limited mainly due to affordability
- **GHS 2013 = 23.1%** RSA citizens has challenges in accessing food,
- Inadequate Food access = 26% (NW – 42%; LP – 9.3%)
- Prevalence of under-nutrition for children 1-3 (Stunting 25%; Wasting 3%; Severe underweight 1.5%)
- Prevalence of overweight and obesity - Women 65% and Men 31%

www.dsd.gov.za

social development  
Department:  
Social Development  
REPUBLIC OF SOUTH AFRICA

NDA  
National  
Development  
Agency

sassa  
www.sassa.gov.za

### Percentage and number of persons with inadequate access to food by province, 2013

Province	Population	Inadequate access to food	Percentage
Western Cape	6,016,926	1,621,783	27.0%
Eastern Cape	6,620,137	2,249,936	34.0%
Northern Cape	1,162,914	408,108	35.1%
Free State	2,753,142	761,485	27.7%
KwaZulu-Natal	10,456,907	3,109,267	29.7%
North West	3,597,589	1,530,502	42.5%
Gauteng	12,728,438	2,291,400	18.0%
Mpumalanga	4,127,970	1,312,359	31.8%
Limpopo	5,517,968	513,183	9.3%
South Africa	52,981,991	13,798,023	26.0%

www.dsd.gov.za

social development  
Department:  
Social Development  
REPUBLIC OF SOUTH AFRICA

NDA  
National  
Development  
Agency

sassa  
www.sassa.gov.za

## DSD Food Security Interventions -Breaking the cycle of inter-generational poverty

- Social grants provide a resource for the social development sector to contribute in breaking the cycle of poverty and contribute to youth and women's empowerment.
- Identification and feeding and empowering vulnerable groups
- Building cooperatives and promoting community level entrepreneurship (linking and bringing community-sourced products into identified sector controlled markets)
- The utilisation of social grants towards investment in local communities and economic empowerment (social grants as part of local investment)

Building a Caring Society Together. www.dsd.gov.za



social development

Department:  
Social Development  
REPUBLIC OF SOUTH AFRICA



NDA


National  
Development  
Agency



## Social Development Sector Food and Nutrition Security Interventions


- Social Relief of Distress ( SRD)
- Community Nutrition & Development Centres
- Early Child hood Development
- Drop in Centres and old age homes
- Social assistance/ social grants
- Household gardens (by the NDA funded NPOs/ PIAs)

Building a Caring Society Together. www.dsd.gov.za




social development

Department:  
Social Development  
REPUBLIC OF SOUTH AFRICA



NDA

National  
Development  
Agency



## Social Development Sector Food and Nutrition Security Interventions

### Community Nutrition Development Centres (CNDCs)

- Ensure access to food for the poor and vulnerable
- Establish food distribution infrastructure
- Reach the food insecure including those in rural areas.
- Improve nutrition security of citizens;
- Develop market channels through bulk gov't procurement of food;
- Enhance safety nets and food-emergency management systems

### Relief of Social Distress (SRD)

- Provision of relief to vulnerable groups while waiting for social grant inclusive of school uniform and food parcels


### Early Childhood Dev't Centres (ECDs)

- Provision of food in ECD to children 0-4 at a value of R6-8 /child per day X 264 days

### Drop In Centres (DICs)


- Provision of food to older, sickly and weak person in institutions

Building a Caring Society Together. www.dsd.gov.za




social development

Department:  
Social Development  
REPUBLIC OF SOUTH AFRICA



NDA

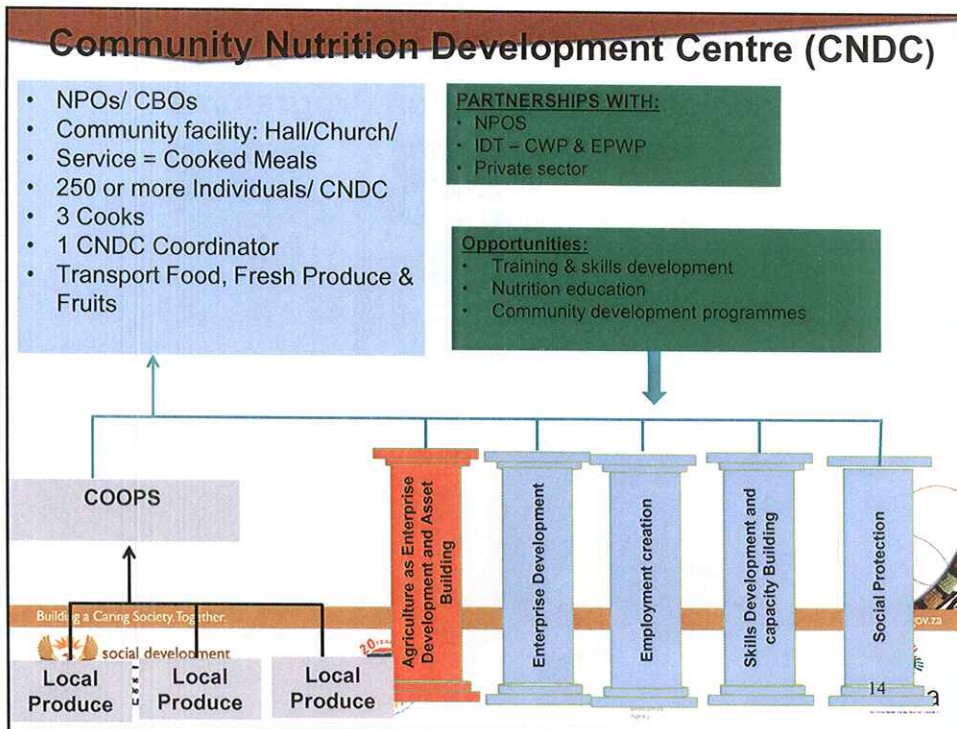
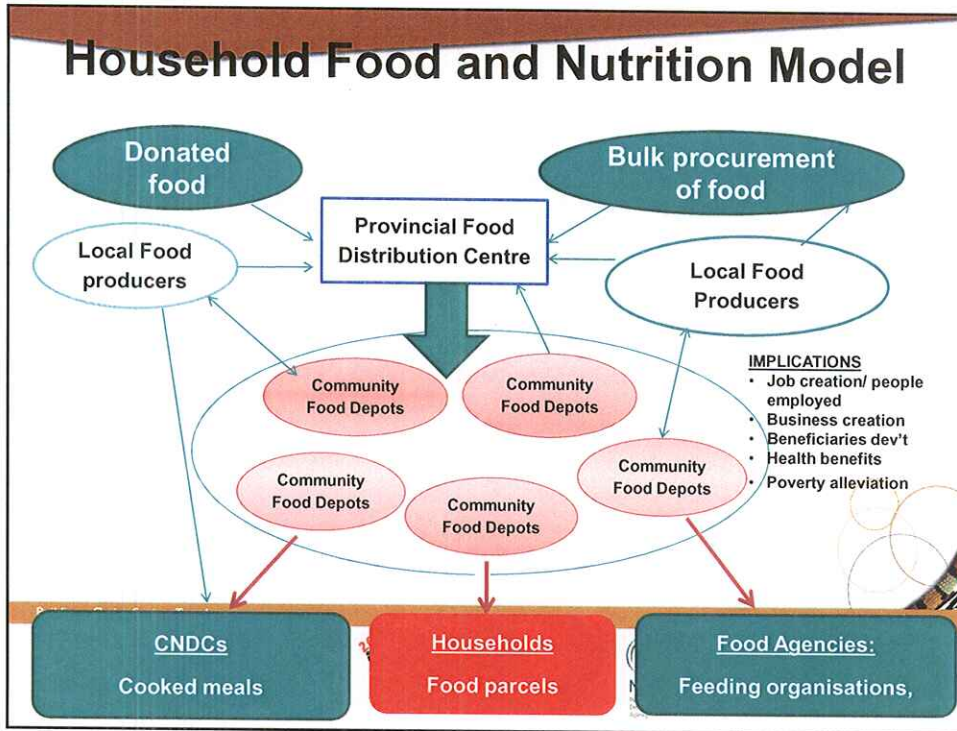
National  
Development  
Agency

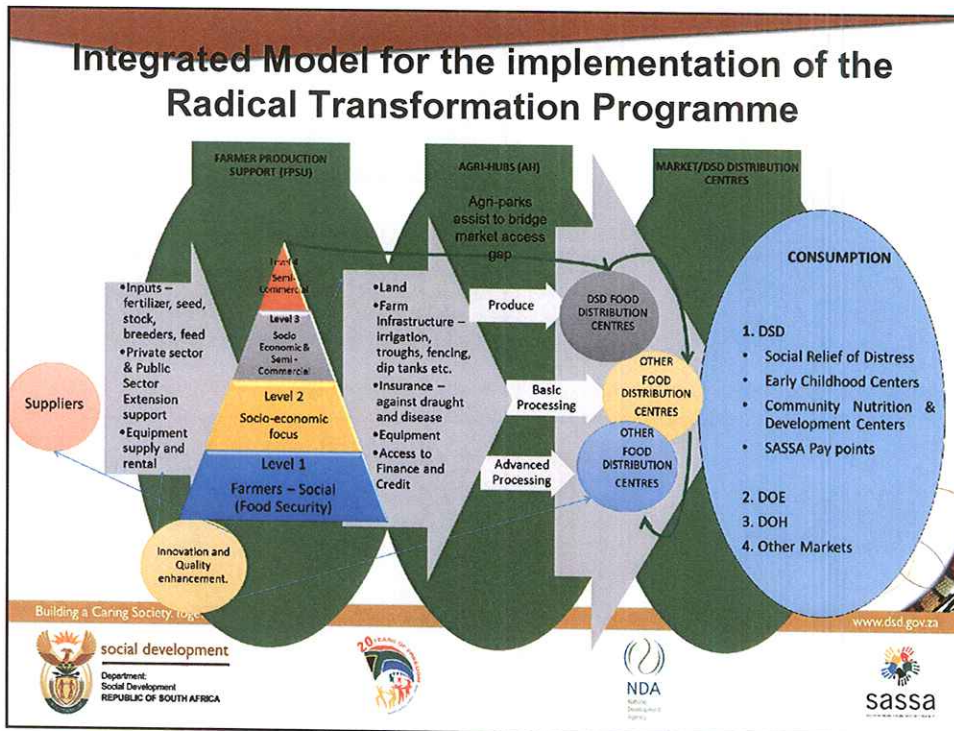


## The Resources DSD Sector Command

PROGRAMME	TOTAL NUMBER	BUDGET
Community Nutrition & Dev't Centres (CNDCs)	166 CNDCs reaching about 1,901 952 beneficiaries	R87,5 million (FY 16/17)
Drop Inn Centres (DIC)	678 DICs	R1, 7 million
Social Relief of Distress (SRD)	263 057 beneficiaries	R 450 million
Early Childhood Development Centres (registered)	26 553 ECDs & 1.5million children	R1,9 Billion
Social assistance	16 million social grant beneficiaries in SA	R130 Billion per year, R390bn over three years and more than a trillion rand over 10 years
Household support for food security by the NDA	1 350 Households supported (150 HHs / province)	R11,4 million









## Progress on Food Distribution Centres establishment

Province	Implementing Agent	Number of CNCDCs funded			Total number of beneficiaries			TOTAL
		National	Prov'l	Total	Q1	Q2	Q3	
EC	Ruliv	8	11	19	48 000	64 000	57 160	160 169,
FS	ADRA	8	25	33	70 400	94 840	105 080	270,320
GP	Kagisano	8	2	10	36 920	37 780	63 020	137,720
KZN	Meals On Wheels	8	28	36	149 600	149 600	143 680	207 880
NW	Motswedi	8	0	8	31 960	41 195	36 320	73 155
Mp	Sinqobile	9	0	9	28 340	85 218	107 080	220 638
NC	To be appointed	8	12	20	52 000	52 000	52 000	156 000
Limp	Makotse	8	4	12	33 340	43 760	46 840	123 940
WC	Ilitha Labantu	19	0	19	85 000	85 000	107 400	277 400
<b>Total</b>		<b>81</b>	<b>85</b>	<b>166</b>	<b>535 560</b>	<b>647 812</b>	<b>718 580</b>	<b>1,901 952</b>

Building a Caring Society Together.

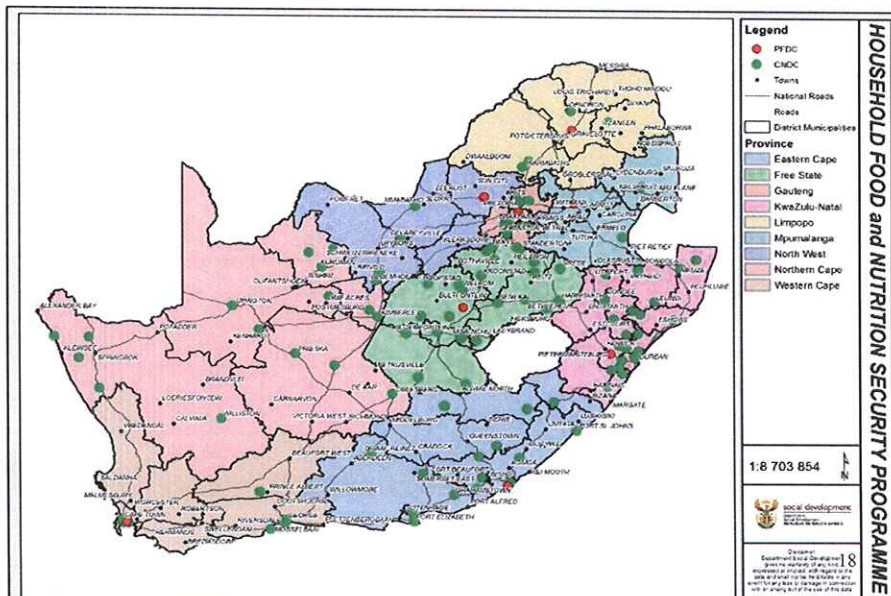
www.dsd.gov.za



**social development**  
Department:  
Social Development  
REPUBLIC OF SOUTH AFRICA



## Map Food Distribution Centres in SA



**HOUSEHOLD FOOD and NUTRITION SECURITY PROGRAMME**

Programme Funding (2014/15 to 2015/16)					
Province	Implementing Agent	2014/15 Allocation		2015/16 Allocation	Total
		PFDC	CNDCs	PFDC & CNDCs	
EC	Ruliv	R3 636 000	R1 496 000	R5 104 800.00	R10 236 800.00
FS	ADRA	R3 636 000	R1 496 000	R5 104 800.00	R10 236 800.00
GP	Kagisano	R3 636 000	R1 496 000	R5 104 800.00	R10 236 800.00
KZN	Meals On Wheels	R3 636 000	R1 496 000	R5 104 800.00	R10 236 800.00
Limp	Makotse	R3 636 000	R1 496 000	R5 104 800.00	R10 236 800.00
Mpu	SKEC	R2 338 500	N/A Transferred through PFDC	R5 104 800.00	R7 443 300.00
NC	To be appointed	R2 338 500	N/A Transferred through PFDC	R5 104 800.00	R7 443 300.00
NW	Motswedi	R3 636 000	R1 496 000	R5 104 800.00	R10 236 800.00
WC	Ilitha Labantu	R3 636 000	R1 895 000	R10 207 600.00	R15 738 600.00
<b>TOTAL</b>		<b>R30 129 000</b>	<b>R10 871 000</b>	<b>R51 046 000.00</b>	<b>R92 046 000.00</b>

Building a Caring Society Together. [www.dsd.gov.za](http://www.dsd.gov.za)


 social development  
 Department:  
 Social Development  
 REPUBLIC OF SOUTH AFRICA






 NDA  
 National  
 Development  
 Agency



 sassa  
 Social Assistance  
 Services Agency


Total number of work opportunities created					
Province	Implementing Agent	Number of CNDCs			Total number of work opportunities created
		National	Provincial	Total	
Eastern Cape	Ruliv	8	11	19	82
Free State	ADRA	8	24	32	136
Gauteng	Kagisano	8	2	10	46
KwaZulu Natal	Meals On Wheels	8	28	36	154
North West	Motswedi Wa Sechaba	8	0	8	39
Mpumalanga	Sinqobile	8	1	9	43
Northern Cape	Brian Hermanus Umbrella House	8	12	20	80
Western Cape	Ilitha Labantu	17	0	17	76
Limpopo	Makotse Women's Club	8	4	12	57
<b>Total</b>		<b>81</b>	<b>82</b>	<b>163</b>	<b>713</b>

Building a Caring Society Together. [www.dsd.gov.za](http://www.dsd.gov.za)


 social development  
 Department:  
 Social Development  
 REPUBLIC OF SOUTH AFRICA




 NDA  
 National  
 Development  
 Agency


 sassa  
 Social Assistance  
 Services Agency



## Integration with Sustainable Livelihoods & Sourcing of Food from Local Cooperatives

- The feeding of CNDCs beneficiaries is to be linked with skills training and development of beneficiaries through income generation projects and cooperatives.
- The Implementing Agents are mandated to source all possible items from local cooperatives:
  - ✓ Uniforms for the Cooks
  - ✓ Fruits and vegetables for CNDCs
  - ✓ Food commodities that are produced by cooperatives

Building a Caring Society Together.

www.dsd.gov.za



social development  
Department:  
Social Development  
REPUBLIC OF SOUTH AFRICA



## Food Safety & Quality Assurance measures within PFDCs & CNDCs

- All PFDCs are obliged to comply with the National Health Act 63 of 1977 - "Regulations governing general hygiene requirements for food premises and the transport of food".
- PFDC warehouses are installed with cold-rooms.
- Food delivery trucks are installed with thermo-cubed bodies.
- CNDCs also acquire refrigerators for the perishable food products



Building a Caring Society Together.

www.dsd.gov.za



social development  
Department:  
Social Development  
REPUBLIC OF SOUTH AFRICA





## Food Safety & Quality Assurance measures within PFDCs & CNDCs

- CNDC Cooks are provided with accredited training in food safety, preparation, and hygiene. A total of 314 Cooks have been trained from the 9 provinces.
- CNDCs also acquire refrigerators for the perishable food products.



Building a Caring Society Together.



social development

Department:  
Social Development  
REPUBLIC OF SOUTH AFRICA



## Challenges

- Poor infrastructure for ECD, CNDCs in the targeted deprived communities
- Insufficient coverage by the current network of PFDCs & CNDCs
- Capacity of emerging food producers and cooperatives to supply CNDCs on consistent basis
- Current procurement policies and practices
- Linking with other government departments interventions (lack of integration)



Building a Caring Society Together.

[www.dsd.gov.za](http://www.dsd.gov.za)



social development

Department:  
Social Development  
REPUBLIC OF SOUTH AFRICA



NDA  
National  
Development  
Agency



sassa

## Recommendations

It is recommended that the Portfolio Committee:

- Note progress on the implementation of the Household food and Nutrition Programme
- Note the strides made to ensure food safety and quality service delivery to beneficiaries
- Ensure integrated programme implementation



Building a Caring Society Together.

[www.dsd.gov.za](http://www.dsd.gov.za)



social development  
Department:  
Social Development  
REPUBLIC OF SOUTH AFRICA



# THANK YOU



Building a Caring Society Together.

[www.dsd.gov.za](http://www.dsd.gov.za)



social development  
Department:  
Social Development  
REPUBLIC OF SOUTH AFRICA



