



Presentation of the 2014 / 15 Annual Report to the Portfolio Committee on Basic Education

Wednesday, 14 October 2015

**Mr Jeremy Thomas
(Acting Chief Executive Officer)
and**

**Ms Zodwa Modimakwane
(Executive Manager: Quality Assurance and Monitoring)**

Overview

- Role of Umalusi
- Mandate of Umalusi
- External Environment: Impact on Umalusi
- Quality Assurance regime
- Organisational Performance per Unit
- Financial Information
- Current Issues and way forward
- Conclusion

Role of Umalusi

- Umalusi is the quality assurer in the general and further education and training band of the National Qualifications Framework (NQF).
- The Council ensures that the providers of education and training have the capacity to deliver and assess qualifications and learning programmes and are doing so to expected standards of quality.

Mandate Summarised

Umalusi's mandate is determined by two Acts namely the:

- *National Qualifications Framework Act, 2008 (Act No. 67 of 2008); and*
- *General and Further Education and Training Quality Assurance Act, 2001 (Act No. 58 of 2001, amended in 2008).*

Mandate Summarised

- Develop and manage a sub-framework of qualifications in collaboration with SAQA and the other two Quality Councils (QCs) supported by the necessary quality assurance policies and processes
- Develop and implement the necessary quality assurance policies in respect of quality assurance of provision
- Maintain a database of learner achievements and related matters; and submit such data in a format determined in consultation with SAQA for recording on the national learners' records database

Mandate Summarised

- Commission and publish research related to the development and implementation of the sub-framework of qualifications

- Formalization of relationships which include:
 - Advice to the relevant Minister on matters relating to the GFET sub-framework of qualifications

 - Collaboration with SAQA and other QCs in terms of the National Qualifications Framework

 - Advocacy of the sub-framework and its qualifications

External Environment : Impact

- The National Development Plan (2011): Highlights education and training priorities that must be addressed in planning
- Collaboration with SAQA and the other QCs in the transition to the NQF Act - staff are extensively involved in SAQA task teams
- Finalisation of the NQF (December 2012): Ministerial regulation of the revised NQF (and sub-frameworks)
- The White Paper on a Post-school System (Dec 2013)
- Umalusi's Sub-framework (GFETQSF) regulated Sept 2014, Government Gazette 38029: Provides a vision for the post school system

External Environment : Impact

- The Department of Higher Education and Training has created significant changes in terms of the Acts relating to colleges
- It appears to be uncertain in respect of the qualifications it wishes to offer: NC(V) is being reviewed at the request of the Department, but the N1 – N3 engineering programmes continue to be offered, despite the outdatedness of the curricula
- The Department of Basic Education is implementing the CAPS - Umalusi has analysed the changes made to the curricula and the standard of the assessments; some of this research is published; some forms part of the longitudinal study (2016)
- The NASCA has been curriculated; the Minister is to publish them. In the meanwhile the Amended Senior Certificate is being offered.
- The General Education and Training Certificate for Adults – has been regulated

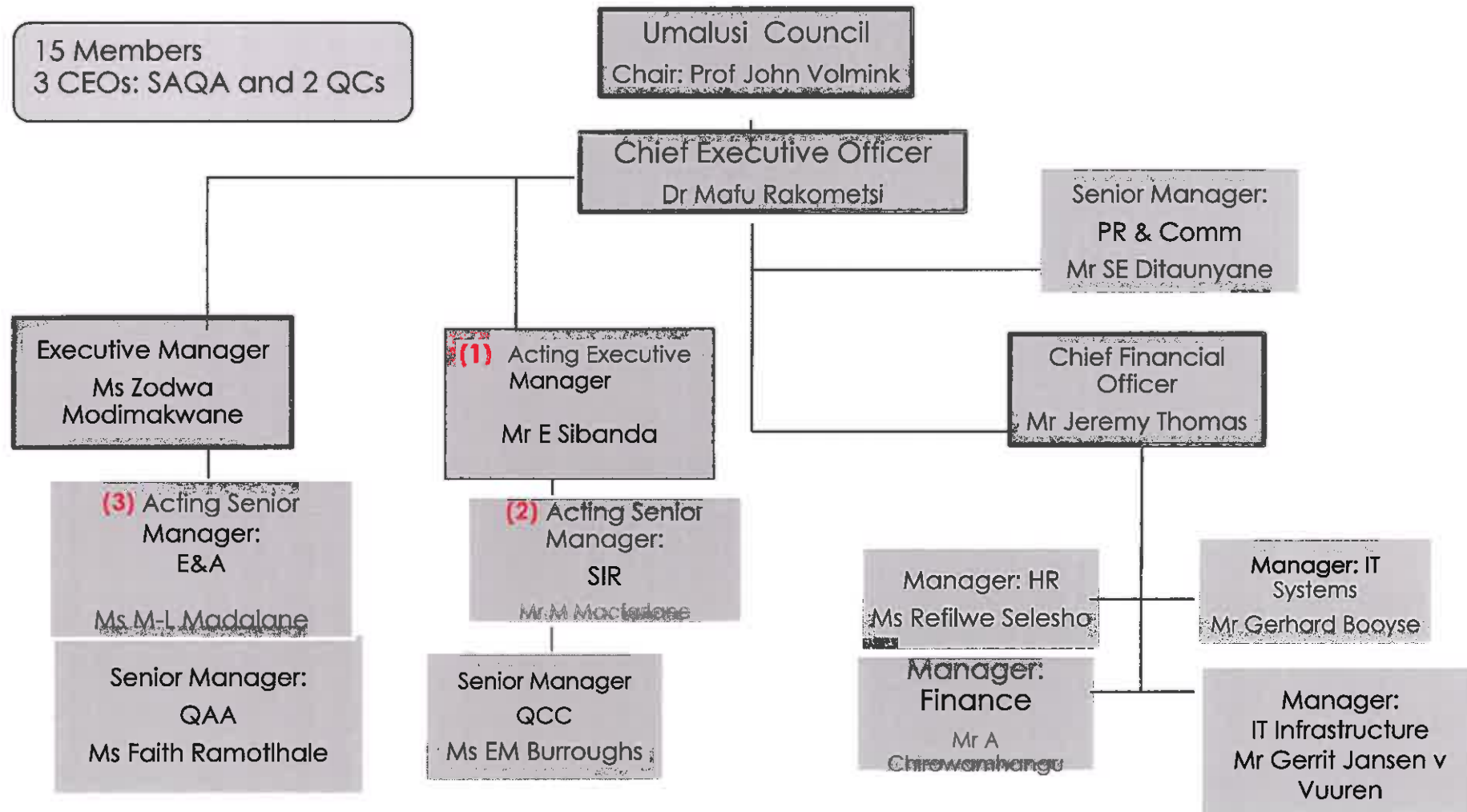
Quality Assurance Regime 2014/2015

- Umalusi sets and maintains educational standards and assures quality through a combination of processes and interventions. The 2014 / 2015 quality assurance regime included the following:
 - Evaluation and benchmarking of existing qualifications and curricula (Intended curriculum) and issuing authentic certificates; development of new qualifications and curricula
 - Ensuring through external moderation processes that assessments at exit points are of an acceptable standard and that examinations are conducted in a credible manner through verifying the national and provincial monitoring systems (Examined curriculum)

Quality Assurance Regime 2014/2015

- Ensuring that standardisation processes are reliable, consistent and that standardization decisions are upheld during resulting
- Accrediting private institutions (schools, FET colleges and Adult Centres) to offer the qualifications Umalusi certifies (enacted curriculum)
- Accrediting private assessment bodies to offer / assess the qualifications Umalusi certifies and monitoring of public assessment bodies

Organisational Structure



Footnotes: previous slide

- (1) Executive Manager: Qualifications and Research is a newly created post. The incumbent will assume duties on 1 January 2016.
- (1) The Acting Executive Manager is the Senior Manager: Statistical Information and Research (SIR) and will revert to his position on 1 January 2016.
- (2) The Acting Senior Manager: SIR is the Senior Researcher and will also revert to his position on 1 January 2016.
- (3) The Senior Manager: Evaluation and Accreditation resigned from his position with effect from 1 September 2015, and an Acting Senior Manager assumed duties on same date. The recruitment and selection process is underway.

Qualifications, Curriculum and Certification Unit (QCC)

- The role of QCC is to develop and manage the General and Further Education and Training Qualifications Sub-framework and to enhance the status and quality of the qualifications that Umalusi certifies.
- Quality assuring the qualifications and their related curricula is QCC's contribution to the overall quality of the certificate which Umalusi issues.
- QCC also oversees the issuing of certificates and their verification.

Qualifications, Curriculum and Certification

April 2014 – March 2015	COMMENTS
<p>Qualifications Sub-framework</p> <ul style="list-style-type: none"> ▪ The Policy for the GFETQSF was gazetted (September 2014); ▪ NASCA regulated by gazette in September 2014. Umalusi provided guidance i.r.o NASCA curriculum development. ▪ Policies regarding the management of qualifications, curricula and certifications reviewed ▪ Qualifications Standards Committee met as per plan ▪ Relationships with Departments, SAQA, QCs maintained 	<p>Completed as per plan</p>

Qualifications, Curriculum & Certification

April 2014 – March 2015	COMMENTS
<p>Curriculum evaluated and benchmarked:</p> <ul style="list-style-type: none"> • FET CAPS project prioritized – Reports published, launched and disseminated (June 2014 onwards) • Senior Phase CAPS research planned and first evaluation workshop held 	<p>Being undertaken as per plan</p>
<p>Certification :</p> <ul style="list-style-type: none"> • Certification systems (all qualifications) developed and/or enhanced • Certification for all qualifications undertaken as data is submitted. 2014/15: 1 128 879 certificates issued • Verification undertaken as per service level agreements. 2014/15: 303 049 verifications undertaken. 	<p>Issued in line with directives and guidelines</p>

Quality Assurance of Assessments Unit (QAA)

This function entails establishing, maintaining and improving standards and quality in assessment at exit points in General and Further Education and Training. In order to fulfil this function, Umalusi uses five key processes:

- external moderation of question papers;
- verification of monitoring the conduct of examinations;
- external moderation of marking;
- external moderation of continuous assessment; and
- standardisation of assessment results.

(Qualifications: SC; NSC; N2,3; NC(V) Levels 2,3,4; GETC)

Quality Assurance of Assessment

April 2014 – March 2015	COMMENTS
<p><u>Ext Moderation of Question Papers:</u></p> <ul style="list-style-type: none"> • NSC: 502 question papers (DBE,IEB,SACAI) • GETC: 90 question papers (DHET + IEB) • NCV level 2-4 : 390and (NATED) 144 question papers • SC : 77 question papers 	<p>Completed as per plan</p> <p>Reports submitted to the Ministers of Basic and Higher Education on all 2014 exams</p>
<p><u>Moderation of marking:</u></p> <ul style="list-style-type: none"> • NSC: 30 subjects (on site and centralized) • GETC: 13 learning areas across PDE's & 4 learning areas (IEB), and 2 Learning areas for Benchmark • NCV level 2 -4 : 86 subjects and (NATED) 33 subjects 	<p>Completed per plan</p> <p>Reports submitted to the Ministers of Basic and Higher Education on all 2014 exams</p>

Quality Assurance of Assessments

April 2014 – March 2015	COMMENTS
<p><u>Internal assessment:</u></p> <ul style="list-style-type: none"> • NSC: Phase 1- 8 subjects across 4 PDE's • Phase 2 - 8 subjects across 9 PDE's • Phase 3 -17 subjects across • SACAI: Phase 1: 14 subjects; • Phase 2: 15 subjects • GETC: 26 Learning (SBA Tasks), 17 learning areas across 9 PDE's and 4 (IEB) • NCV: 94 subjects (L2-4) sampled across 50 colleges and (NATED) 17 subjects 	<p>All internal assessment moderated as per plan</p> <p>Reports submitted to the Ministers of Basic and Higher Education on all 2014 exams</p>
<p><u>Verifying monitoring conduct of exams:</u></p> <ul style="list-style-type: none"> • NSC: 387 sites • ABET: 134 sites • NCV: 60 sites • SC : 66 sites 	<p>All monitoring conducted as per plan</p> <p>Reports submitted to the Ministers of Basic and Higher Education on all 2014 exams</p>

Quality Assurance of Assessments

April 2014 – March 2015	COMMENTS
<p><u>Monitoring marking of exams:</u></p> <ul style="list-style-type: none"> • SC: 15 marking centres (DBE) • NSC: 103 sites (DBE); 2 (IEB) and 1 centralized (SACAI) • GETC: 8 (DHET), 2 (IEB) 1 (Benchmark) marking centres, • NCV: 45 sites and 24 (NATED) 	<p>Completed as per plan</p>
<p><u>Standardisation:</u></p> <p>Assessment outcomes Standardised for 11 examinations (SC, NSC, NCV, N1-N3 and GETC: ABET Level 4).</p>	<p>Completed as per plan</p> <p>Reports submitted to the Ministers of Basic and Higher Education on all 2014 exams</p>

Quality Assurance of Assessments

April 2014 – March 2015	COMMENTS
<p><u>Irregularities:</u></p> <ul style="list-style-type: none">• SC: 153 centres were implicated in systemic irregularities (KZN);• NSC: KZN 21 centres implicated in group copying• NSC: EC 14 centres implicated in group copying• NSC: GP (5), WC (1), NW (1) NC (1) centres implicated in group copying	Pending investigations in 11 centres KZN, 7 centres in EC due to disruptions from candidates and legal representatives.

Evaluation and Accreditation Unit (E&A)

- The evaluation and accreditation Unit is responsible for accrediting private institutions through quality assurance of their provision for the qualifications Umalusi certifies.

The unit evaluates:

- The capacity of education and training providers to implement registered qualifications and approved curricula; and
- The quality of the enacted curriculum in providers i.e. teaching and learning at the required standard
- The capacity of assessment bodies to conduct practical, internal, and external assessment of learner achievement at the required standard, leading to the certification of registered qualifications

Accreditation of Private Providers

April 2014 – March 2015

Independent Schools: New accreditation process opened in October 2014:

- 99 Extension of accreditation period until 31st August 2015

New applications received

- 46 granted 7 years accreditation
- 25 granted 1 year provisional accreditation
- 12 not accredited and 3 deferred

FET Colleges: New accreditation process opened in Sept 2014:

- 100 Extension of accreditation period until 31st August 2015

New applications received

- 0 granted 7 years accreditation
- 22 granted 2 years provisional accreditation
- 8 not accredited and 3 deferred

AET Centres: New accreditation process opened in Sept 2014:

- 26 Extension of accreditation period until 31st August 2015

New applications received

- 2 granted 7 years accreditation
- 2 granted 2 years provisional accreditation
- 2 not accredited and 4 deferred

Accreditation of Private Providers

Institutional Site Visits	
April 2014 – March 2015	COMMENTS
Independent Examinations Board (IEB) monitored for continued accreditation to assess the NSC	Completed per plan
IEB granted provisional accreditation to offer the GETC subject to an improvement plan	Completed per PAJA
SACAI monitored for continued provisional accreditation to assess the NSC in pilot exam 2014 and "state of readiness" for 2015	SACAI's performance being monitored
Benchmark Assessment Agency monitored for the state of readiness for 2014 GETC exam and also monitored during the conduct of the pilot of 2014 GETC exam.	Currently in process of conducting a second pilot

Accreditation of Private Providers

Institutional Site Visits	
April 2014 – March 2015	COMMENTS
Independent schools: 86 sites visits conducted	Per plan
Private FET: 30 site visits conducted	Per plan
Private AET: 10 sites visits conducted	Per plan

Statistical Information and Research Unit (SIR)

The mandate of the SIR unit is to conduct research as identified by the needs of the organisation and report on the key indicators of quality and standards in general and further education and training; to establish and maintain databases; to lead statistical research and analysis; and to inform and provide statistical support for the work in other units. The SIR Unit also plays a role in organizational and professional development at Umalusi.

Statistical Information and Research

April 2014 – March 2015	Comment
National Senior Certificate Indicators Report	Report finalized
Making educational judgments 2	Report finalized
National Senior Certificate matriculation results as predictors of academic success in higher education (Pilot study)	Report finalized
Working our way up: Maths and Science education after poor international ratings	Seminar Report published
Education and South African Political Parties: considerations for the General Election	Seminar Report published
Item Response Theory - Related research conducted	Ongoing

Statistical Information and Research

April 2014 – March 2015	Comment
Consolidated Post-Examination Analysis report 2014 – Content Subjects: DBE	Report finalized
Consolidated Post-Examination Analysis report 2014 – Content Subjects: IEB	Report finalized
Grade 12 Home Language examinations: Trends and Issues, 2012-2014 (Part 1): question papers from the Department of Basic Education	Report finalized
Grade 12 Home Language examinations: Trends and Issues, 2012-2014 (Part 2): question papers from the Independent Examinations Board	Report finalized

Governance and Office of the CEO (GOCEO)

This unit ensures that:

- Strategic and Annual Performance Plans are in place and that the organisation carries out its remit
- Corporate Governance as per King 111 is implemented
- Umalusi's work is advocated through a Communications and Public Relations strategy
- Stakeholder relationships are built and managed

Governance and Office of the CEO

April 2014 – March 2015	COMMENTS
Strategic and annual performance plans developed, implemented and monitored	<p>New planning cycle developed and organisational reports published as required</p> <p>Policies developed and implemented after Council approval</p> <p>Performance evaluated and monitored quarterly</p>
Organisational governance maintained	Council meetings conducted, committees supported and services rendered

Public Relations and Communications (PR & Comms)

The purpose of the Public Relations and Communications Unit is to facilitate the management, through communication, of perceptions and strategic relationships between Umalusi and its internal and external stakeholders.

Public Relations and Communications

April 2014 – March 2015	Comments
External PR functions and communication carried out as planned and in response to external needs	Completed per plan
Internal PR functions carried out as planned	Completed per plan
Internal Umalusi events managed and supported	Completed per plan
Publications	Completed per plan except external newsletter due to staff shortage for 5 months
Media conferences	Completed per plan
Stakeholder Relations	Completed per plan

Information Technology (IT)

- The Information Technology sub-unit focuses on ensuring that all information technology requirements of the organisation are met, serves as an enabler and contribute to the achievement of Umalusi's strategic goals.

The sub-unit is responsible for:

- System development and maintenance;
- Network and hardware provisioning and support; and
- ICT Governance.

Information Technology Infrastructure & Systems

April 2014 – March 2015	COMMENTS
<p><u>Hardware procured</u></p> <ul style="list-style-type: none"> . 245 computer components . Intel Next Unit of Computing . 2 iPads . 35 laptops . 3 printers . 4 R730 Server 	<p>Equipment installed with SLA's implemented and network support meeting expectations.</p> <ul style="list-style-type: none"> . 57 personal computers in total . 21 servers in total . 72 laptops in total . 366 network points (includes the telephone points) in total . 12 iPads in total
<p><u>Software</u></p> <p>23 different applications</p>	<p>Software licensing up to date.</p>
<p><u>Network support</u></p> <p>Business continuity</p>	<p>Disaster Recovery implemented. High Availability maintained.</p>

Information Technology Infrastructure & Systems

April 2014 – March 2015	COMMENTS
<p>Management Information system</p>	<ul style="list-style-type: none"> · MIS project is ongoing improving operational output · Umalusi web site maintained and supported · Online accreditation system for private providers implemented
<p><u>Mainframe Systems</u></p> <ul style="list-style-type: none"> · Certification system · Verification system · Quality Assurance systems 	<ul style="list-style-type: none"> · Supported certification and the issuing of certificates for SC, N3, NCV, NSC and GETC · Submitted data of learner achievements to SAQA for recording on the NLRD for the years 1992 to 2012 · Supported the verification of qualifications · Successfully supported the quality assurance of the examination resulting processes (Standardization and Statistical moderation)

Finance and Supply Chain Management - FSCM

- This sub-unit provides sound management of financial resources and timely production of financial reports in accordance with organizational policy and relevant statutes.
- This includes ensuring unqualified audit reports
- Ensure timeous collection of debt.(Still facing challenge of the old certification debt)
- Ensuring that service providers are paid in 30 days
- Assets are properly controlled and safeguarded
- surpluses cash invested in line with the Treasury Regulations, Currently investments held with CPD.

Finance and SCM

April 2014 – March 2015	COMMENTS
<p data-bbox="152 373 1189 427"><u>Finance and Supply Chain Management</u></p> <ul style="list-style-type: none"> <li data-bbox="152 469 1240 523">. Unqualified audit (history of organization) <li data-bbox="152 564 1077 619">. Creditors were paid within 30 days <li data-bbox="152 660 860 715">. Surpluses invested at CPD <li data-bbox="152 756 1111 858">. Fixed assets registered, labeled and monitored <li data-bbox="152 900 904 1002">. Adherence to supply chain management procedures <li data-bbox="152 1043 1234 1145">. Implementation of the cost containment measures <li data-bbox="152 1187 1128 1289">. Systems for collection of outstanding debt strengthened <li data-bbox="152 1331 1234 1385">. Building and security systems maintained 	<p data-bbox="1276 373 1939 427">Unqualified audit this year.</p> <p data-bbox="1276 469 1973 801">Internal renovations to building successful despite space constraints, therefore requested for purchase of additional premises next door</p>

Human resources management and development (HRM&D)

- The sub-unit provides efficient, effective and timely support to all units including accurate, timely information regarding recruitment, selection and placement, benefit management, policies and procedures, training and skills development, staff establishment information, and the management of Employment Equity.
- Baseline performance:
 - Staff wellness programme implemented
 - Staff training and development plan implemented
- Recruitment and appointments mad in lien with organizational HR practices

Finance, HRD & Admin Support

April 2014 – March 2015	COMMENTS
<p data-bbox="152 375 1370 427"><u>Human Resources Management & Development</u></p> <p data-bbox="152 467 1218 520">Training plan developed and implemented</p> <ul data-bbox="152 560 792 890" style="list-style-type: none"><li data-bbox="152 560 703 612">. Bursaries to staff – 7<li data-bbox="152 652 757 705">. In house training – 14<li data-bbox="152 745 667 798">. Short courses – 41<li data-bbox="152 837 792 890">. All 114 staff benefitted <p data-bbox="152 930 801 983">Recruitment and selection</p> <ul data-bbox="152 1023 739 1166" style="list-style-type: none"><li data-bbox="152 1023 739 1075">. Vacancy rate – 10 %<li data-bbox="152 1115 631 1166">. Turnover rate – 6 <p data-bbox="152 1206 1391 1259">Effective records management system developed</p> <p data-bbox="152 1299 1120 1409">Effective management of performance management system</p>	<p data-bbox="1467 375 2004 596">Development of staff a priority with greater budget demands for 2014/15 and beyond</p>

Financial Performance 2014/15

Revenue	Amount
Certification, verification and accreditation	25 098 948
Department of Basic Education Grant	107 354 000
Interest and other income	5 447 245
Total Income	R 137 900 193
Expenditure	132 177 344
Surplus	R 5 722 849

The surplus is due to :

- Increased Accreditation applications.
- Private TVET college fee collections increased (outstanding debt).
- Interest income from reserves still not expended (awaiting SCM renovation approvals).
- Reduced expenditure due to approval of posts to be filled over two financial years.
- Cost containment measures generated reduction in operational expenses.

Financial Position 2014/15

Assets	37 401 694
•Property & equipment	37 313 877
•Intangible assets	87 817
Current Assets	58 549 045
•Trade & other receivables	7 716 370
•Cash & cash equivalents	50 832 675
TOTAL ASSETS	R 95 950 739
Equity	79 412 685
• Accumulated surplus	71 216 063
• Revaluation reserve	8 196 622
Liabilities	16 538 054
•Trade & other payables	11 271 634
•Provisions	5 266 420
TOTAL EQUITY & LIABILITIES	R 95 950 739

Umalusi 3 year forecast

2015/16	2016/17	2017/18	2018/19
R 134 639 000	R 155 190 241	R 174 898 384	R 194 337 813
R 112 705 000	R 118 678 000	R 124 612 000	R 131 839 000
Shortfall-----> (Umalusi budget same as previous year except for renovation requirements)	R 13 331 672 - To fund from Umalusi reserves	R 7 522 261 - To fund from Umalusi reserves R 13 973 246 - Additional Grant required	"Nil" reserves to support operations R 26 752 563 Additional Grant required
Budgets are expected to increase by CPI, but in Umalusi's case true inflation costs like travel, accommodation, flights, etc. are way above CPI.			
Y/Y Percentage Increase			
-0.1%	15%	13%	11%
4.98%	5.2%	5% 16.7%	5.8% 14.4%

Total Income 2000/01 (actual) to 2018/19 (budget)

YEAR	INCOME	BUDGET	DBE GRANT	GRANT %
2000/01	R 6 150 786		0	0
2001/02	R 7 027 948		0	0
2002/03	R 13 757 861		R 1 513 000	11
2003/04	R 18 076 902		R 3 050 000	17
2004/05	R 23 547 626		R 12 869 000	55
2005/06	R 28 603 979		R 7 690 000	27
2006/07	R 32 972 345		R 10 286 000	31
2007/08	R 36 013 566		R 12 652 000	35
2008/09	R 46 434 369		R 16 044 000	35
2009/10	R 52 442 731		R 16 494 000	31
2010/11	R 59 464 754		R 17 350 000	29
2011/12	R 93 219 718		R 18 391 000	20
2012/13	R 81 527 016		R 42 330 000	52
2013/14	R 120 904 924		R 97 662 000	81
2014/15	R 137 900 193		R 107 354 000	78
2015/16		R 134 639 131	R 112 705 000	84
2016/17		R 155 190 241	R 118 678 000	76
2017/18		R 174 898 384	R 124 612 000	71
2018/19		R 194 337 813	R 131 839 000	68

Current Issues and the way forward

- Budget requirements in the years going forward i.t.o. grant. A scientific funding model is required where investment in quality assurance can make significant improvements, e.g. a study was done in 2011 where around 0,047% of the higher education budget was spent on SAQA and the QCs. If an allocation of 1% of the Basic Education budget is allocated specifically for this ,one should see significant systemic improvements and Umalusi is that Independent Quality Council fit for this purpose.
- The Council is strengthening it's QA process to deal with systemic irregularities:- hotline effective; assessment bodies are required to present irregularities reports prior to the approval of results.
- Umalusi is in the process of reviewing the accreditation process

Conclusion

Umalusi wishes to thank
Ms N Gina,
Chairperson of the
Portfolio Committee,
and
the members for their ongoing support