



---

**home affairs**

---

Department:  
Home Affairs  
**REPUBLIC OF SOUTH AFRICA**

# **STATE OF THE PROVINCE: MPUMALANGA**

## **Briefing the Portfolio Committee on Home Affairs:**

**8 SEPTEMBER 2015**

**Presented by the Acting Provincial  
Manager: Ms ME Makatu**

# TABLE OF CONTENT

---

Provincial Overview	12 - 31
Capacity Information	32 - 38
Human Resources	39 - 49
Counter Corruption, Security Services and Labour Relations	50 -54
Finance and Budget	55 - 62
Operations	63 - 74
Ports of Entry	75 - 78
Challenges and Achievement	79 - 80

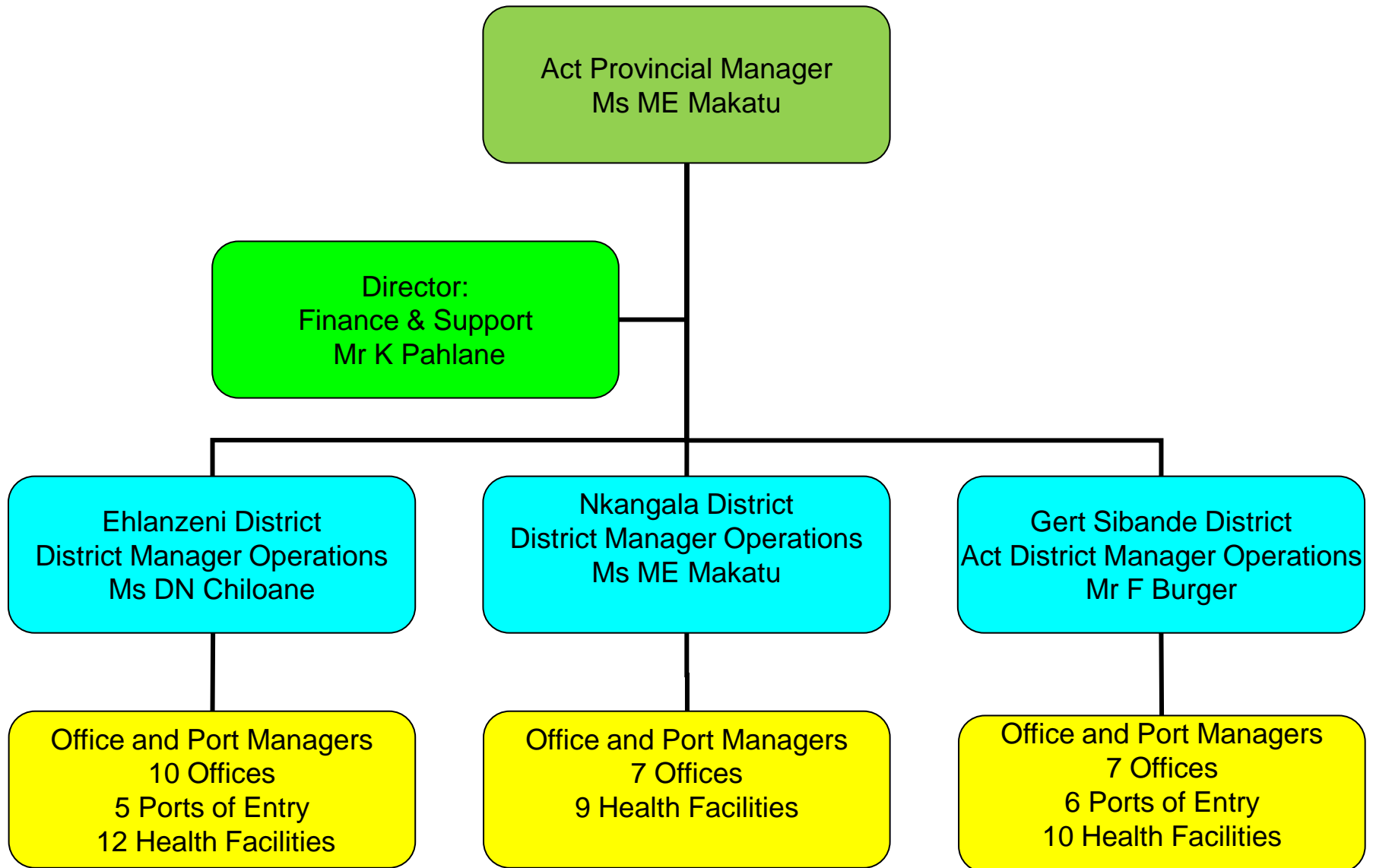
## KEY FINDINGS

- Mpumalanga's percentage share of the national population of 54.0 million was 7.8 per cent, or 4.2 million, in 2014.
- In total over the last year, Mpumalanga recorded 14 000 less jobs, however, the province registered an increase of 8 000 jobs in the third quarter of 2014.
- Mpumalanga (29.3 per cent), recorded the fourth highest strict unemployment rate among the nine provinces. The expanded unemployment rate was 42.0 per cent in the third quarter of 2014.
- The male unemployment rate was 25.7 per cent, the female unemployment was 33.6 per cent and the youth (15-34 years) unemployment rate was 41.8 per cent.
- By 2013, 10.8 per cent of the people 20 years and older had not received any schooling.
- In 2013, the Mpumalanga's Grade 12 pass rate (77.6 per cent) was the fifth highest/lowest.
- In 2012, the HIV prevalence rate of the female population aged 15–49 in Mpumalanga was 35.6 per cent – the second highest after KwaZulu-Natal.
- In 2013, Mpumalanga recorded a HDI (The Human development index is a composite, relative index that attempts to quantify the extent of human development of a community. It is based on measures of life expectancy, literacy and income) score of 0.60, an improvement from the relatively low level achieved in 1996.
- The poorest 40 per cent of households in Mpumalanga earned 7.6 per cent of income in 2013, which was higher (better) than the national figure of 6.7 per cent for 2013, but still lower than the 8.9 per cent share achieved in 1996.
- In 2013, 36.5 per cent or 1.5 million of Mpumalanga population lived below the lower-bound poverty line of R548 per month.
- A major share of households (62.1 per cent) in Mpumalanga reported expenditure of less than R2 500 per month in 2013.
- Mpumalanga's contribution to the national economy was the fifth largest with a share of 7.3 per cent in 2013.
- The provincial GDP growth of 3.0 per cent forecasted for the period 2013-2018 is lower than the expected national growth rate of 3.4 per cent.
- In 2013, the three largest contributors to the provincial economy were mining (25.4 per cent), community services (16.4 per cent) and trade (15.0 per cent).
- The October 2014 inflation measurement in Mpumalanga of 5.6 per cent was lower than the national level of 5.9 per cent and lower than the upper band of the inflation target zone for the second month in succession.

# MPUMALANGA PROVINCE - POPULATION

District Municipality	Local Municipality	Population
<b>Ehlanzeni</b>	Mbombela	588,794
	Bushbuckridge	541,248
	Nkomazi	390,610
	Thaba Chweu	98,387
	Umjidi	69,577
Total		1,688,616
<b>Gert Sibande</b>	Albert Luthuli	186,010
	Dipaseleng	42,390
	Govan Mbeki	294,538
	Lekwa	115,662
	Mkhondo	171,982
	Pixley ka Seme	83,235
	Msukaligwa	149,377
Total		1,043,194
<b>Nkangala</b>	Emalahleni	395,466
	Emakhazeni	47,216
	Thembisile Hani	310,458
	Dr JS Moroka	249,705
	Steve Tshwete	229,831
	Delmas	75,452
Total		1,308,128
<b>MPUMALANGA PROVINCE</b>		<b>4,039,938</b>

# PROVINCIAL MANAGEMENT AND DERMACATION





# FOOTPRINT



# MPUMALANGA HOME AFFAIRS FOOTPRINT



# DHA FOOTPRINT

Services	Ehlanzeni District	Nkangala District	Gert Sibande District	Total
Provincial Office	1			1
Local Offices Large	1	1	1	3
Local Offices Medium	9	6	6	21
Border Posts	5	0	6	11
Local Offices Small (PSP)	5	3	2	10
Local Offices Small (TH)	5	1	3	9
Local Offices Small (VP)	4	7	10	21
Health Facilities	12	9	10	31
Mobile Offices	5	4	2	11
<b>TOTAL</b>	<b>47</b>	<b>31</b>	<b>40</b>	<b>119</b>



# DHA FOOTPRINT

District Municipality	Local Municipality	DHA Presence			Health Facilities
Ehlanzeni	Mbombela	LOL Nelspruit	LOS (PSP) Civic Centre	Kruger-Mpumalanga International Airport	Rob Ferreira Hospital Medi Clinic
		LOM White River	LOS (PSP) Daantjie		Themba Hospital
			LOS (PSP) Msogwaba		
			LOS (PSP) Kabokweni		
	Umjindi	LOM Hazyview			Matikwane Hospital
		LOM Barberton	LOS (TH) Louieville (VP)		Barberton Hospital
		LOM Nkomazi	LOS (VP) Mgobodzi	BP Lebombo	Shongwe Hospital
			LOS (TH) Matsamo	BP Josefsdal	Tonga Hospital
		LOM Komatipoort	LOS (TH) Mbangwane (VP)	BP Mananga	
		LOM Malelane		BP Jeppes Reef	

LOL	Local Office Large	PSP	Permanent Service Point	BP	Border Post
LOM	Local Office Medium	TH	Thusong Centre		
LOS	Local Office Small	VP	Visiting Point		

# DHA FOOTPRINT

District Municipality	Local Municipality	DHA Presence		
	Thaba Chweu	LOM Mashishing (Lydenburg)	LOS (PSP) Sabie	Lydenburg Hospital Matibidi Hospital Sabie Hospital
			LOS (TH) Leroro	
	Bushbuckridge	LOM Mhala	LOS (VP) Acornhoek	Tintswalo Hospital
			LOS (VP) Hluvukani	
			LOS (VP) Lillydale	
		LOM Mapulaneng	LOS (TH) Casteel)	Mapulaneng Hospital

LOL	Local Office Large	PSP	Permanent Service Point	BP	Border Post
LOM	Local Office Medium	TH	Thusong Centre		
LOS	Local Office Small	VP	Visiting Point		

# DHA FOOTPRINT

District Municipality	Local Municipality	DHA Presence		
Nkangala	Emalahleni	LOL Witbank	LOS (VP) Ogies LOS (PSP) Kriel	Witbank Hospital Life Cosmos
	Victor Khanye	LOM Delmas		Bernice Samuel Hospital
	Steve Tshwete	LOM Middelburg	LOS (VP) Hendrina	Middelburg Hospital
	Emakhazeni	LOM Belfast	LOS (VP) Waterval Boven	HF Grove Hospital
			LOS (VP) Wonderfontein	
	Thembisile	LOM Kwa-Mhlanga	LOS (VP) Moloto	Kwa-Mhlanga Hospital
		LOM Mkobola	LOS (VP) Tweefontein	Vlaklaagte Clinic
			LOS (VP) Verena	
	Dr JS Moroka	LOM Mdujane	LOS (PSP) Mbibane	Siyabuswa Clinic
			LOS (PSP) Mmamehlake	Mmamehlake Hospital
			LOS (TH) Marapyane	

LOL	Local Office Large	PSP	Permanent Service Point	BP	Border Post
LOM	Local Office Medium	TH	Thusong Centre		
LOS	Local Office Small	VP	Visiting Point		

# DHA FOOTPRINT

District Municipality	Local Municipality	DHA Presence			
Gert Sibande	Msukaligwa	LOL Ermelo	LOS (PSP) Carolina		Ermelo Hospital
			LOS (TH) Breyten (VP)		Carolina Hospital
	Albert Luthuli	LOM Eerstehoek	LOS (VP) Dundonald	BP Oshoek	Embhuleni Hospital
			LOS (VP) Ekulendeni	BP Waverley	
			LOS (VP) Hartebeeskop		
			LOS Mpuluzi		
	Mkhondo	LOM Piet Retief	LOS (TH) Fernie (VS)		
			LOS (VP) Tjakastad		
			LOS (VP) Driefontein	BP Bothashoop,	Piet Retief Hospital
			LOS (VP) Kwathandeka	BP Emahlathini	
				BP Mahamba	
				BP Nerston	

LOL	Local Office Large	PSP	Permanent Service Point	BP	Border Post
LOM	Local Office Medium	TH	Thusong Centre		
LOS	Local Office Small	VP	Visiting Point		

# DHA FOOTPRINT

District Municipality	Local Municipality	DHA Presence		
	Pixley ka Seme	LOM Volksrust	LOS (VP) Daggakraal	Elsie Ballot Hospital
			LOS (VP) Amersfoort	Amajuba Hospital
			LOS (VP) Wakkerstroom	
	Lekwa	LOM Standerton	LOS (VP) Morgenzon	Standerton Hospital
	Dipaliseng	LOM Secunda	LOS (PSP) Balfour	Trichard Hospital
			LOS (TH) Tholulwazi	Evander Hospital
	Goven Mbeki	LOM Bethal		Bethal Hospital

LOL	Local Office Large	PSP	Permanent Service Point	BP	Border Post
LOM	Local Office Medium	TH	Thusong Centre		
LOS	Local Office Small	VP	Visiting Point		

# DHA FOOTPRINT – HEALTH FACILITIES

HEALTH FACILITIES OPERATIONAL / NOT OPERATIONAL		
District	Operational	Not Operational
Ehlanzeni	6	6
Nkangala	1	8
Gert Sibande	6	4
<b>TOTAL</b>	<b>13</b>	<b>28</b>

- It needs to be mentioned that at most of the operational Health facilities there is a challenge with the networks. It is very slow and as a result clients register at the nearest offices.

## Reasons for Health Facilities not being operational:

- No network
- Challenges with the VPNC accounts
- 3 – G cards not working
- Renovations at hospital

# LEASES

MUNICIPALITY	OFFICE	LEASE END	COMMENTS
<b>EHLANZENI DM</b>			
Mbombela LM	PM Offices	30/11/2018	Office moved to new accommodation during December 2013
	Nelspruit LOL	31/09/2017	Request to renew for 3 years done
	Hazyview LOM	30/06/2016	Was extended for 1 year based on the beneficial occupation. New accommodation was acquired. Floor plan approved.
	White River LOM	31/11/2016	Request to renew for 3 years done
	Msogwaba LOS	31/12/2018	
Umjindi	Barberton LOM (parking)	30/09/2019	
Thaba Chweu LM	Sabie LOS	30/11/2015	Currently paying based on the beneficial occupation while awaiting the signing of the lease agreement. Request to renew for 3 years done
Nkomazi LM	Malelane LOM	31/08/2016	Request to renew for 3 years done
	Komatipoort	31/1/2016	Request to renew for 3 years done
Bushbuckridge LM	Casteel LOS (TH)	30/06/2015	Request to renew for 2 years done. Requested for alternative accommodation as current office space is too small

## LEASES (cont...)

MUNICIPALITY	OFFICE	LEASE END	COMMENTS
<b>NKANGALA DM</b>			
Emakhazeni LM	Belfast LOM	30/04/2016	Request to renew for 3 years done
Steve Tswete	Middelburg LOM	30/05/2017	Request to renew for 3 years done
<b>GERT SIBANDE DM</b>			
Msukaligwa LM	Ermelo LOL	31/11/2016	Request to renew for 2 years done.  Alternative accommodation has been requested as the current building is not suitable. Public area on first floor of building. An elevator is available but often out of order. Landlord is maintaining frequently
Albert Luthuli LM	Eerstehoek LOM	30/06/2017	
Mkhondo LM	Piet Retief LOM	31/08/2018	
Lekwa LM	Standerton LOM	31/12/2018	
Dipaliseng LM	Secunda LOM	31/05/2019	
Goven Mbeki LM	Bethal LOM	30/06/2019	
	Carolina LOS	29/02/2016	Request to renew for 3 years done



# MOBILE OFFICES

KEY AREA	NUMBER	PERCENTAGE
<b>Mobile offices</b>		
Number of mobile offices	11	100%
Number of non-functional mobile	6	55%
Number of Functional mobiles	5	45%

- 3 Mobile Offices have damaged or broken satellite dishes
- Equipment from one Mobile Office (computers, printer and camera) was stolen and need to be replaced. (SAPS case number: 835/12/2014)
- One Mobile Office is in for a service
- One Mobile Office is currently awaiting approval for new batteries

# Smart ID Card footprint

Target for 2014/15: 181,440

Actual achievement 2014/15: 117,376

District	Office	Implementation date	Annual Target (applications taken in) 2015/16	Target Q1 Target (applications taken in)	Q1 Actual 2015/16 Target (applications taken in)
Ehlanzeni	Nelspruit	09/12/2013	26,880	6,720	5,423
	Barberton	25/08/2014	13,440	3,360	1,178
	Komatipoort	07/03/2015	13,440	3,360	3,829
	Mashishing (Lydenburg)	07/03/2015	13,440	3,360	3,346
	Malelane	27/03/2014	6,720	1,680	2,472
	Mhala	25/08/2014	33,600	8,400	3,543
	White River	25/03/2014	13,440	3,360	3,753
Nkangala	Witbank	09/12/2013	26,880	6,720	5,140
	Middelburg	09/12/2013	20,160	5,040	3,022
Gert Sibande	Ermelo	25/03/2014	13,440	3,360	3,534
	Piet Retief	25/03/2014	13,440	3,360	3,031
	Eerstehoek	25/08/2014	13,440	3,360	1,537
	Bethal	02/01/2015	13,440	3,360	2,567
<b>Total</b>	<b>13</b>		<b>221,760</b>	<b>55,440</b>	<b>42,375</b>

# Smart ID Card footprint

## Roll-out plan for additional offices 2015/16

District	Office
Gert Sibande	Standerton
	Volkstrust
	Secunda
	Standerton
Ehlanzeni	Hazyview



# CAPACITY

# STRUCTURE: FILLED AND VACANT POSTS

LEVEL	NUMBER OF POSTS ACCORDING TO THE STRUCTURE	NUMBER OF FILLED POSTS	NUMBER OF VACANT FUNDED POSTS
LEVEL 14	1	0	1
LEVEL 13	4	3	1
LEVEL 12	7	7	0
LEVEL 11	2	2	0
LEVEL 10	32	30	2
LEVEL 9	4	3	1
LEVEL 8	83	67	11
LEVEL 7	73	69	1
LEVEL 6	521	494	23
LEVEL 5	14	14	0
LEVEL 3	62	57	2
TOTAL (2015/16)	803	747	42

???? Posts not funded

# STRUCTURE: DETAIL OF ADVERTISED POSTS

CIRCULAR	POSTS	PROGRESS
• HRMC 12 of 2015	• Civic Services Supervisor (Mapulaneng) – level 8	• Shortlisted and interviewed
• HRMC 2 of 2015	• Immigration Officer (KMIA) – level 6	• Shortlisted and interviewed
• HRMC 28 of 2015	• Control Immigration Officer (Hazyview) – level 8 • Immigration Officers (Kwa-Mhlanga) – Level 6	• Shortlisted, interviewed and filled (official will assume duty on 1 Sept 2015) • Shortlisted and interviewed
• HRMC 3 of 2015	• District Manager Operations (Gert Sibande) – level 13	• Shortlisted and interviewed (Head Office)
• HRMC 34 of 2015	• 4 x Front Office Clerks (Msogwaba, Kriel, Mkobola and Mhala) • Civic Services Supervisor (Nkomazi) – level 8 • Chief Administration Clerk (Mhala) level 7	• Shortlisted and interviewed • Shortlisted and interviewed • Shortlisted
• HRMC 6 of 2015	• 4 x Immigration Officers (Lebombo) – level 6 • Civic Services Supervisor (Nelspruit) – level 8	• Shortlisted and interviewed • Shortlisted and interviewed
• HRMC 63 of 2015	• 2 x Local Office Managers (Siyabuswa and Malelane) – level 10 • District Co-ordinator (Ehlanzeni) – Level 10	• Closing date 14 August 2015
• HRMCL 64 of 2015	• 4 x Front Office Clerks (Middelburg, Ermelo, Witbank and Siyabuswa) • Civic Services Supervisor (Middelburg) – level 8 • Control Immigration Officer (Jeppes Reef) – level 8 • 5 x Immigration Officers (Ermelo, Bothashoop, Komatipoort, Bethal and Oshoek) – level 6	• Closing date 10 August 2015
• HRMC 75 of 2014	• Control Immigration Officer (Lebombo) – level 8	• Shortlisted

# EMPLOYMENT EQUITY

	MALE					FEMALE						
LEVEL	A	C	I	W	Disability	A	C	I	W	Disability	Total Disability	Total Establishment
LEVEL 14												
LEVEL 13	1					2						3
LEVEL 12	3					2			1			7
LEVEL 11	1					1						2
LEVEL 10	12			4		14						30
LEVEL 9	1				1	3					1	4
LEVEL 8	29		1	7		25	1	1	3	1	1	67
LEVEL 7	34			1	1	26	1		7	1	2	69
LEVEL 6	196	2		3	5	285	2		6	8	13	494
LEVEL 5	7					7				3	3	14
LEVEL 3	27				1	29	1			1	1	57
TOTAL	312	2	1	16	8	394	5	1	17	14	22	747

	African	Colored	Indian	White	People with Disability
Demographic targets	79%	8.9%	2.5%	9.6%	2.0%
Percentage Representation Province	94.39%	1.07%	0.27%	4.28%	2.94%

# LEAVE

TYPE OF LEAVE TAKEN	DAYS
Vacation Leave	4,326
Sick Leave	395
Family Responsibility Leave	88
Maternity Leave	627
Pre-natal Leave	12
Shop Steward Leave	4
Special Leave	209
PILLAR (1 official approved)	60
Leave without pay	14
Occu Injury	21
Leave discounting (official who resigned)	8.15
<b>TOTAL DAYS</b>	<b>5,764.15</b>

**45 Applications for PILLAR were submitted. 42 for Short period and 3 for long period**  
**- Currently one case approved. Awaiting results on outstanding cases**



# People management and performance

## 2014/15 Status

People management	Achievement	Status summary
Performance agreements signed	Performance agreements signed	All performance agreements submitted to Human Resources and captured on Persal
Moderation	Moderation was done	<p>Only 2 DD's were not assessed yet.</p> <p>The DD: Vetting is being assessed by her Director in Head Office. He will only be available to present her case during the week of 14 – 18 September 2015.</p> <p>DD: HR – currently an internal dispute which will be finalise during the week of 8 -11 September 2015</p>

## 2015/16 Status

People management	Achievement	Percentage
Performance agreements signed	Performance agreements signed	All performance agreements submitted to Human Resources and captured on Persal

## Staff Development 2015/16

---

Staff Development 2015/16		
Training Intervention	Month	Number attending
Diamond Release (Smart Card)	April 2015	20
Emotional Intelligence	May 2015	4
Inspectorate Training	11 May – 30 June 2015	13
Induction	May 2015 and June 2015	12
Immigration Regulations training (minors)	May 2015	16

# Provincial Staff engagement

Meeting	Chaired by	Purpose	Frequency
Top Management	Provincial Manager	<ul style="list-style-type: none"> <li>- To discuss management issues</li> <li>- Take decisions on way forward</li> <li>- Discuss issues from DMC</li> </ul>	Monthly
Provincial Management	Provincial Manager	<ul style="list-style-type: none"> <li>- Capture decisions and actions to be executed by DMOs, office heads and forums</li> <li>- Follow up on actions decided on</li> </ul>	Monthly
District Management	District Managers Operations	<ul style="list-style-type: none"> <li>- Operational issues on civics, immigration, security issues</li> </ul>	Monthly
Stakeholder Forum	Relevant Speakers	<ul style="list-style-type: none"> <li>- Operational issues</li> </ul>	Provincial – Half Yearly District – Once per quarter Local – at least once per quarter
Security Committee	Office Manager: Witbank	<ul style="list-style-type: none"> <li>- Security issues</li> </ul>	Quarterly
Youth Development	Chairperson of Youth	<ul style="list-style-type: none"> <li>- Planning for events</li> <li>- Report back on previous events</li> </ul>	Monthly
Staff Meetings	Office Managers	<ul style="list-style-type: none"> <li>- Discuss operations, circulars and minutes of provincial management meetings as well as minutes of District Management Meetings</li> <li>- Inter –active staff engagement</li> </ul>	Last Wednesday of Month 07h30 – 9h00



# COUNTER CORRUPTION

## EMPLOYEE RELATIONS CASES

KEY AREA	NUMBER OF CASES REPORTED	OUTCOMES
Fraud & Corruption	03	Still in progress/Not yet finalized
Improper Conduct	01	Still in progress/not yet finalized
<b>SANCTIONS</b>		
Dismissals		
Warnings	03	03



- **Corruption Unit and Security (CCSS):**
- Cases received = 8
- Hearing held = 0
- Outcome = n/a
- **Challenges:** Only one official (ASD: Investigations) that must handle all cases in the province

## Progress : Vetting

- 34 Cases vetted and submitted to Head Office



# BUDGET AND RESOURCES

# MPUMALANGA SUMMARY OF BUDGET

DESCRIPTION	BUDGET ALLOCATED	EXPENDITURE As at 30 June 2015	FUNDS AVAILABLE	%BUDGET SPEND
<b>CURRENT PAYMENTS</b>				
Compensation of Employees	186,954,000.00	48,563,137.28	138,390,862.72	26%
Goods and Services	15,776,000.00	4,198,795.94	11,577,204.06	27%
<b>PAYMENT FOR CAPITAL ASSETS</b>				
Machinery & Equipment	250 000	0.00	250 000	0%
<b>TRANSFERS AND SUBSIDIES</b>				
Provincial and Local Governments	97 000	0.00	97 000	0%
Households	137,000.00	177,622.07	-40,622.07	130%
<b>TOTAL</b>	<b>203,214,000.00</b>	<b>52,939,555.29</b>	<b>150,274,444.71</b>	<b>26%</b>

## Analysis on expenditure :

Compensation of employee is in line with the spending percentage of 25 %

Goods and Services cost drivers:

- Cost driver is Travel and Subsistence and fleet
- Accruals from previous financial year 1,275,122.60

Households relates to resettlements, resignations and retirement.



# REVENUE COLLECTION PER MUNICIPALITY

MUNICIPALITY	REVENUE AMOUNT
CHIEF ALBERT LUTHULI MUNICIPALITY	421,177.58
BUSHBUCKRIDGE MUNICIPALITY	425,241.00
DR JS MOROKA MUNICIPALITY	188,920.00
EMAKHAZENI MUNICIPALITY	102,300.00
EMALAHLENI MUNICIPALITY	1,227,101.65
GOVAN MBEKI MUNICIPALITY	1,045,910.00
LEKWA MUNICIPALITY	209,932.93
MBOMBELA MUNICIPALITY	2,425,449.93
MJINDI MUNICIPALITY	343,150.86
MKHONDO MUNICIPALITY	758,158.31
MSUKALIGWA MUNICIPALITY	657,730.00
NKOMAZI MUNICIPALITY	1,604,972.13

# REVENUE COLLECTION PER MUNICIPALITY

MUNICIPALITY	REVENUE AMOUNT
STEVE TSWETE MUNICIPALITY	804,960.00
THABA CHWEU	365,631.00
THEMBISILE HANI MUNICIPALITY	168,145.00
VICTOR KHANYE MUNICIPALITY	115,650.00
<b>TOTAL</b>	<b>10,864,430.39</b>

Description	Amount
Sale Goods and services produced by Department	R10,596,062
Fines (Section 50 (3) )	R225,000.
Revenue: Financial Assets	R43,368.39
<b>TOTAL</b>	<b>R10,864,430.39</b>

# ASSET MANAGEMENT

Nr of Assets on BAUD	Value	Verified assets	Value of assets verified	Assets not verified	Value of assets not verified	Percentage Compliance
12 646	R69,673,882.28	12 556	R69,052,207.93	90	R 621,674.35	99.2%

- The province was not audited for the 2014/15 financial year



# INVOICES CAPTURED WITHIN 30 DAYS AS AT 30 JUNE 2015

Province	Number of orders raised Q1	Number of invoices received from service providers Q1	Number of invoices paid within 30 days Q1	% compliance
TOTAL	148	404	404	100%

# FLEET MANAGEMENT

KEY AREA	NUMBER	PERCENTAGE
<b>Vehicles</b>		
Number of vehicles in the Province as at 30 June 2015 (excluding Mobile Offices)	<b>123</b>	
New vehicles received:		
Replacements	17	
Additional	2	
<b>Total</b>	<b>19</b>	
Number of non-functional vehicles:		
Maintenance	7	
Accidents	5	
<b>Total</b>	<b>12</b>	10%
Disposed / Auctioned	3	
Returned to Government Garage	10	
<b>Total</b>	<b>13</b>	
Number of functional vehicles	<b>111</b>	90%



**DHA Annual Target: Number of new born children registered within 30 calendar days of birth**

<b>BASELINE for Province (14/15)</b>	<b>ANNUAL TARGET for Province (15/16)</b>	<b>QUARTER 1 TARGET for Province</b>
53,659	57 173	13,624
<b><u>Q1 PROGRESS: STATISTICS</u></b>  13,705 (101%)  <b><u>ANALYSIS</u></b> 12,566 births registered in Q1 of 2014/15		<b><u>CHALLENGES:</u></b>  Connectivity challenges at Health Facilities

**DHA Annual Target: Smart ID Card issued to citizens 16 years and above. Smart ID Cards issued (ready for collection)**

<b>BASELINE for Province (14/15)</b>	<b>ANNUAL TARGET for Province (15/16)</b>	<b>QUARTER 1 TARGET for Province</b>
117,457	187,597	40,078
<b><u>Q1 PROGRESS: STATISTICS</u></b>  40,466 (101%)  <b><u>ANALYSIS</u></b>		<b><u>CHALLENGES:</u></b> <ul style="list-style-type: none"> <li>• Clients not willing to apply if they have a green barcoded ID book</li> </ul>

**DHA Annual Target: Outreach campaigns conducted in provinces to support the Late Registration of Birth final mop up campaign**

<b>BASELINE for Province (14/15)</b>	<b>ANNUAL TARGET for Province (15/16)</b>	<b>QUARTER 1 TARGET for Province</b>
4	1	0
<p><b><u>Q1 PROGRESS: STATISTICS</u></b></p> <p><b><u>ANALYSIS</u></b></p> <p>Province scheduled to have their high impact outreach from 7 – 18 September 2015</p>		<p><b><u>CHALLENGES:</u></b></p>



# STATISTICS FOR MOBILE OFFICES

STATISTICS FOR MOBILE OFFICES	APRIL	May	JUNE	TOTAL
ID First applications	232	999	442	1673
ID Re-applications	99	141	64	304
LRB – above 15 years	10	73	37	120
Births: 0 – 30 days	52	56	71	179
Births: 31 days to 15 years	91	87	65	243
Certificates	24	41	27	92
Amendments	1	1	0	2
Rectifications	1	0	0	1
Passports	8	3	2	13
ID's handed out	277	211	52	540
Revenue	17,505.00	20,870.00	9,940.00	48,315.00



**DHA Annual Target: Number of employers charged for contravening section 38 (4)(a) of the Immigration Act**

<b>BASELINE for Province (14/15)</b>	<b>ANNUAL TARGET for Province (15/16)</b>	<b>QUARTER 1 TARGET for Province</b>
30	58	8
<b><u>Q1 PROGRESS: STATISTICS</u></b>  8  <b><u>ANALYSIS</u></b> 1 employer was charged during Q1 of 2014/15		<b><u>CHALLENGES:</u></b>

**DHA Annual Target: Number of Transgressors of departmental legislation charged in terms of section 49 of the Immigration Acts**

<b>BASELINE for Province (14/15)</b>	<b>ANNUAL TARGET for Province (15/16)</b>	<b>QUARTER 1 TARGET for Province</b>
610	415 (Target was determined before the end of the previous financial year)	112
<b><u>Q1 PROGRESS: STATISTICS</u></b>  298 (266%)  <b><u>ANALYSIS</u></b> 31 Transgressors were charged during Q1 of 2014/15 Successful operations during Operation Fiela		<b><u>CHALLENGES:</u></b>

<b><u>DHA Annual Target:</u> 100% of Detected undocumented foreigners deported directly within 30 Calendar days</b>		
<b>BASELINE for Province (14/15)</b>	<b>ANNUAL TARGET for Province (15/16)</b>	<b>QUARTER 1 TARGET for Province</b>
100% 4181/4181	100%	100%
<b><u>Q1 PROGRESS: STATISTICS</u></b>  100% 259/259  <b><u>ANALYSIS</u></b> 639/639 were deported in Q1 of 2014/15		<b><u>CHALLENGES:</u></b>

<b><u>DHA Annual Target:</u> 100% of Detected undocumented foreigners transferred to Lindela within 20 calendar days</b>		
<b>BASELINE for Province (14/15)</b>	<b>ANNUAL TARGET for Province (15/16)</b>	<b>QUARTER 1 TARGET for Province</b>
99% 403/404	100%	100%
<b><u>Q1 PROGRESS: STATISTICS</u></b>  100% 93/93  <b><u>ANALYSIS</u></b> 179/178 were deported in Q1 of 2014/15		<b><u>CHALLENGES:</u></b>

<b><u>DHA Annual Target: Percentage of Cases of fraudulent marriages finalized</u></b>		
<b>BASELINE for Province (14/15)</b>	<b>ANNUAL TARGET for Province (15/16)</b>	<b>QUARTER 1 TARGET for Province</b>
100% 21/21	100%	100%
<b><u>Q1 PROGRESS: STATISTICS</u></b>  100% 20/20  <b><u>ANALYSIS</u></b> 2/2 cases were finalised during Q1 of 2014/15		<b><u>CHALLENGES:</u></b>

<b><u>DHA Annual Target: 100% compliance with PFMA regulations framework for payment of invoices within 30 days.</u></b>		
<b>BASELINE for Province (14/15)</b>	<b>ANNUAL TARGET for Province (15/16)</b>	<b>QUARTER 1 TARGET for Province</b>
95% 1651/1744	100%	100%
<b><u>Q1 PROGRESS: STATISTICS</u></b>  100% 404/404  <b><u>ANALYSIS</u></b> 124/124 invoices were paid within 30 days during Q1 of 2014/15		<b><u>CHALLENGES:</u></b>

# GREEN ID BOOKS AND LRB APPLICATIONS

UNCOLLECTED GREEN BARCODED IDs IN OFFICE	2015/16
Opening balance as at 1 April	7 335
Closing balance as at 30 June	6 869
Number of ID's handed out	12 776

LRB APPLICATIONS	
April	367
May	345
June	135
<b>TOTAL</b>	<b>847</b>

# Unabridged Certificates and Equivalent letters

Office	Jun-15		Jul-15	
	UBC issued	Equivalent letters issued	UBC issued	Equivalent letters issued
<b>TOTAL</b>	<b>1972</b>	<b>134</b>	<b>1849</b>	<b>209</b>

# Cases withdrawn by Court Quarter 1 - 2015/16

Number of Cases withdrawn	Country of Origin	Reasons for withdrawal	After withdrawal what was the role of DHA
42	28 – Mozambique 1 – Uganda 7- Pakistan 1 – Bangladesh 3 – Zimbabwe 1 – Niger 1 – Malawi	26 Cases were minors 1 – No witnesses 1 – Was a South African Citizen 4 – Married to South African Spouse 4 - Suspended sentence. Released by court to apply for Asylum. 4 – No interpreters 2 – Deported to Lindela	- Released - Deported - Applications asylum

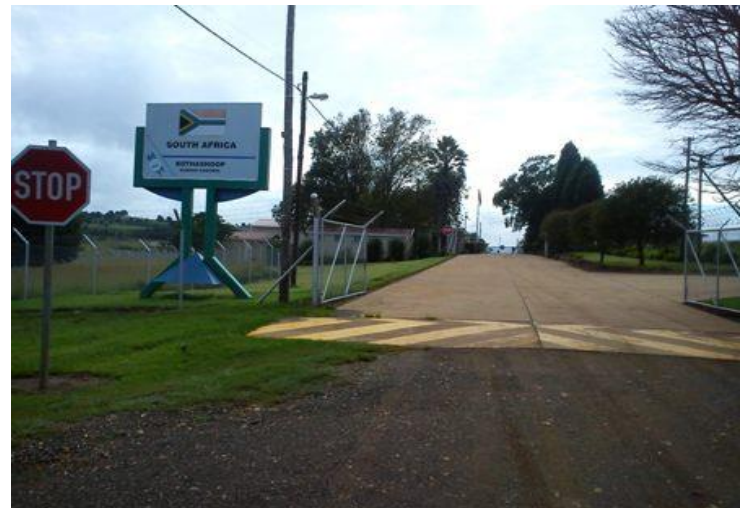
# EMPLOYERS CHARGED

Office	Name of Employer	Company Name	Town	SA Employees	Foreign Employees	Sector	Description	CAS no	Date	Sentencing
Komatipoort	Mr W Wessels	Lebombo Butchery	Komatipoort	9	4	Agriculture	Butchery	165/05/2015	28/05/2015	Paid fine of R6000.00, case finalized
Komatipoort	Mr. KWT Wazira	Cheema Trading	Komatipoort	0	2	Food and beverages	Supermarket	167/05/2015	28/05/2015	Paid fine of R3000.00, case finalized
Komatipoort	Mr. S Citen	China export shop	Komatipoort	0	2	Food and beverages	Supermarket	168/05/2015	28/05/2015	Paid fine of R3000.00, case finalized
Ermelo	Sherda Berda	Best Price Store	Ermelo	0	1	Trading	Supermarket	174/06/2015	15/06/2015	Pending
Ermelo	Tyson G Khumalo	Fruit and Veg	Ermelo	0	1	Trading	Fruit and vegetables	175/06/2015	15/06/2015	Pending
Lydenburg	Melese Selamu Hongoro	Mphato Tshabeleng Supermarkert	Dientjie	0	01	General trading	Supermarket	19/05/2015	2015/05/12	Issued with J534 – Receipt No V2962847 ,Fined R2000.00 And employee was Transfer to Lindela
Lydenburg	Weiming Tang	Wieming Tang	Ohrigstad	0	07	Wood / furniture	General Trader	010/05/2015	2015/06/09	Owner was fined R4000.00 Or 15 days, Suspended for 3 years. The labors were fined R500 or 30 days imprisonment
<b>TOTAL</b>	<b>8</b>									





# PORTS OF ENTRY



## ARRIVALS AND DEPARTURES

ARRIVALS			TOTAL
	SA	Foreign	
	273 958	882 658	1 156 616

DEPARTURES			TOTAL
	SA	Foreign	
	278 300	807 682	1 085 982

## ARRIVALS AND DEPARTURES: REFUSALS

REFUSALS (ARRIVALS)			TOTAL
	SA	Foreign	
	0	2 930	2 930

REFUSALS (DEPARTURES)			TOTAL
	SA	Foreign	
Note: The refusals of SA Citizens does not include refusals due to Unabridged Birth Certificates.	734	162	896

# STATISTICS : PORTS OF ENTRY

## UNDESIRABLES

	TOTAL
Ports of Entry	1,833

## Travellers with UBC / Equivalent letters at Ports of Entry

June 2015 Travellers with UBC or Equivalent letter								July 2015 Travellers with UBC or Equivalent letter							
Arrivals SA		Arrivals Foreign		Departures SA		Departures Foreign		Arrivals SA		Arrivals Foreign		Departures SA		Departures Foreign	
UBC	Equivalent letter	UBC	Equivalent letter	UBC	Equivalent letter	UBC	Equivalent letter	UBC	Equivalent letter	UBC	Equivalent letter	UBC	Equivalent letter	UBC	Equivalent letter
60	2	217	6	739	110	250	19	84	5	193	26	824	5	218	26

## Travellers with refused at Ports of Entry (due to lack of documentation)

June 2015 Travelers refused due to lack of UBC or Equivalent letter			July 2015 Travelers refused due to lack of UBC or Equivalent letter		
Arrivals Foreign	Departures SA	Departures Foreign	Arrivals Foreign	Departures SA	Departures Foreign
234	672	0	200	372	0

# DEPORTATIONS – STATISTICS

## COMBINED TOTAL FOREIGNERS (MOZAMBIQUE & SWAZILAND)

MONTH	2004	2005	2006	2007	2008	2009	2010	2011	2012	2013	2014	2015
JAN	3693	4414	4559	4553	7031	3228	2831	993	589	984	23764	121
Feb	2864	4124	4231	2612	3422	2337	1340	720	317	461	23756	224
MARCH	5596	5575	3864	3952	3305	2712	1560	485	1244	3296	2243	771
APRIL	3515	5625	5431	4110	3205	205	1435	246	498	899	1081	402
May	4775	5549	5449	4623	20918	2114	1281	217	1310	535	3905	381
JUN	3316	5466	4147	2923	7683	2946	735	140	1565	2017	867	188
JUL	2699	3147	5613	3295	2880	1172	1383	175	885	1979	543	
Aug	2640	4822	5382	3604	2712	912	0	155	418	625	1803	
SEPT	6022	2818	3905	2758	4339	1137	0	266	1225	634	1126	
OCT	3995	4143	4372	3138	5356	1511	0	306	1086	3751	389	
NOV	4473	4997	3702	2946	4876	1118	664	320	954	1946	294	
DEC	6672	5434	5604	15631	8298	8749	1402	185	1994	18891	434	
TOTAL	50260	56114	56259	54145	74025	28141	12631	4208	12085	36018	60205	2087


# Achievements

Issue	Achievements	What has improved
Accommodation: Mapulaneng Nkomazi Hazyview	<ul style="list-style-type: none"> <li>Alternative accommodation has been secured for the mentioned offices.</li> </ul>	<p>Service delivery will improve as soon as the new accommodation has been finalised.</p> <ul style="list-style-type: none"> <li>Public is currently being served in one room at Mapulaneng.</li> <li>Public is currently being serviced through windows at Nkomazi</li> <li>Floor plan for Hazyview signed</li> </ul>
Targets	<ul style="list-style-type: none"> <li>9 Targets are reported on.</li> <li>The Province achieved 8 targets - as no High Impact Outreach was scheduled for the province during Q1 and as a result that target is not applicable to the Province for that quarter</li> </ul>	



**Current office: Mapulaneng**

# CHALLENGES

Challenge	Strategic intervention
<b>Infrastructure:</b> <ul style="list-style-type: none"> <li>It is very difficult to secure accommodation in the rural area. Landlords in these areas do not have the funding to upgrade the accommodation according to the specifications.</li> <li>Long processes by the Department of Public Works to secure accommodation</li> </ul>	Constant engagement with the Department of Public Works.
Non achievement of Smart ID card target	Increase marketing and communication strategies to attract the interest of the general public. Monitor and enhance queue management and process flow
<b>Illegal Foreigners:</b> - The influx of illegal foreigners through the porous borders	Establishment of BMA
Inadequate vehicles for Inspectorate (bakkies with canopies for detainees)	Negotiations with Government Garage in progress
Health Facilities	Unstable network at Health facilities results in slow or no services
Run-away trucks at Oshoek. The run-away trucks at Oshoek cause loss of life and damages the infrastructure. Not possible to extend area due to dependency on landlords in surrounding area	



**RE A LEBOGA**

**SIYABONGA**

**THANK YOU**