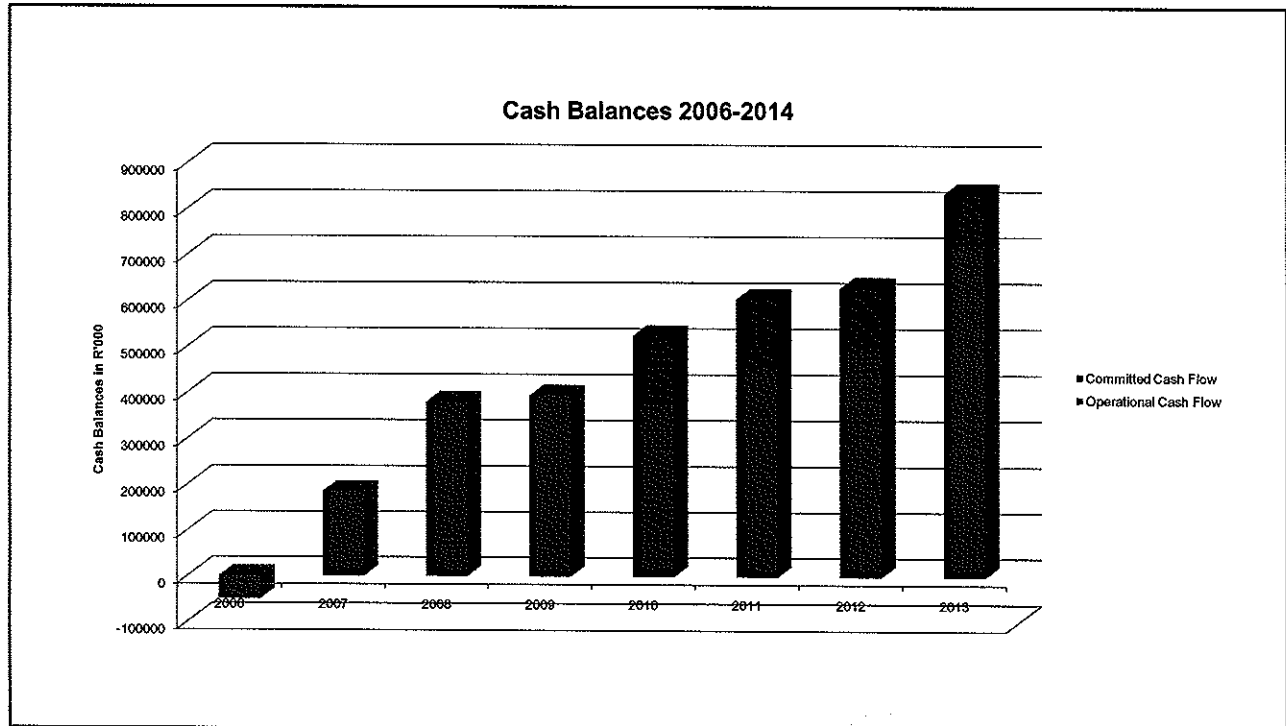


Undergraduate Certificates	383	90	179	142
Undergraduate Diplomas	26	70	9	7
Undergraduate Degrees	2 350	2 256	2 320	3 156
Postgraduate Certificates	99	114	141	147
Postgraduate Diplomas	62	56	69	96
Honours Bachelor's Degrees	346	518	471	510
Masters Degrees	223	274	176	279
Doctoral Degrees	20	10	21	19
TOTAL	3 509	3 388	3 386	4 356



2009 STRIKE (TURFLOOP CAMPUS)

LIST OF DEMANDS

1. Unqualified Staff(allegation that unqualified lectures are appointed)
2. Increase of the Library budget
3. Student Residences(shortage of accommodation)
4. NSFAS (insufficient to cover all the costs)
5. Provision of additional Computer and Printers in the labs)
6. Work Study Programme (increment of allowances)
7. Food Prices (they alleged that the cafeterias are over pricing their products)
8. Water reservoirs (for additional water)
9. Student Health Centre to be opened for 24 hours
10. Resignation of staff Student Affairs (they alleged that they are incompetent)

2011 STRIKE (MEDUNSA CAMPUS)

LIST OF DEMANDS

1. Academic Exclusion
2. Post Graduates Student Accommodation
3. Selection of MBCHB Programme
4. 2011 Fee Increment Structure
5. 2011 Residence Fee Increment
6. NSFAS(Insufficient)

2014 STRIKE (MEDUNSA CAMPUS)

LIST OF DEMANDS

1. Alleged victimisation of students by:
 - Prof De Villiers (Head: Paediatrics)
 - Prof Mda (co-ordinator)
 - Prof Errol Holland (Executive Dean: Health Sciences)
 - Mr Henno Croukamp (Deputy Registrar)
 - Prof S. Monokwane (HOD: Gynaecology)
 - Prof E Ibrahim (Director: School of Medicine)
 - Mrs Gerda Botha (POME)
2. Termination of South Point residence contract
3. Alleged nepotism in appointed of staff in Mathematics
4. Provision of ICT Facilities in the residences
5. Promotion to 6th year with full credits
6. Internal Research Proposal
7. NSFAS(The students submitted a Memorandum to the Office of the Minister)

HOW THE UNIVERSITY DEALT WITH THOSE RESPONSIBLE FOR DAMAGE

ARREST, DISCIPLINARY AND HEARING

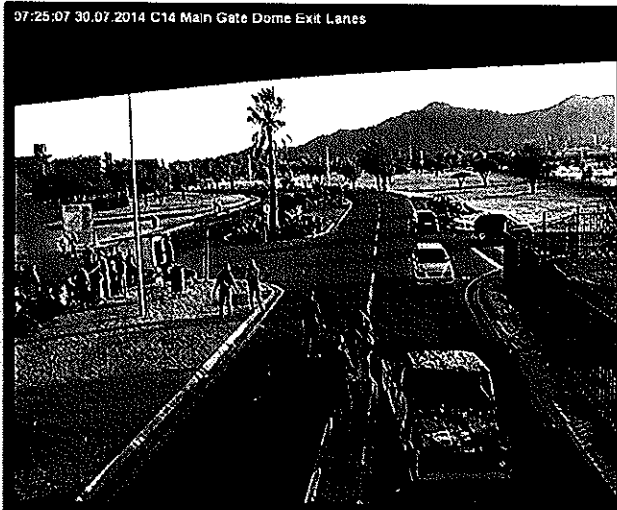
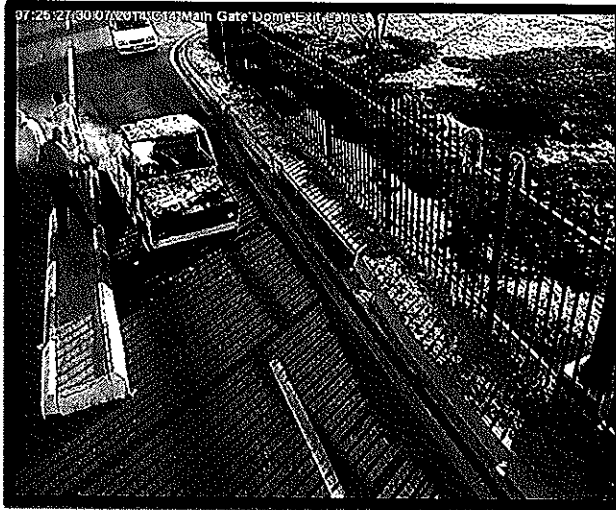
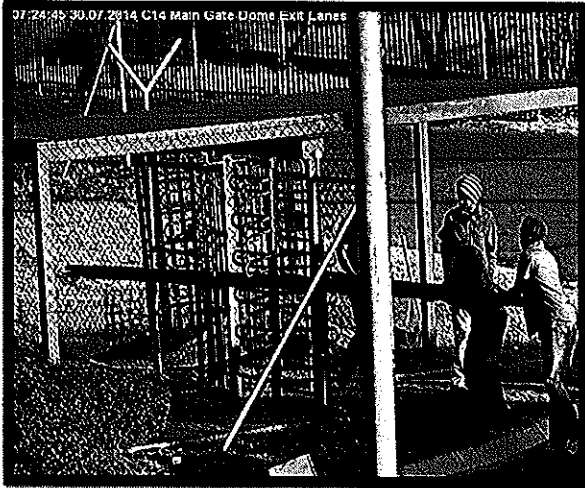
- | | |
|------------------------------|---|
| 2009 :Turfloop Campus | : SRC members were arrested and disbanded
: SRC and some students were suspended and dismissed |
| 2011: Medunsa Campus | : Agreement reached with SRC on the issues raised. |
| 2013: Turfloop Campus | : Students were arrested by police and charged with malicious damage to property
: They appeared at the Mankweng Regional Court on 25/08/2014.
: 8 (eight) students were disciplined through University Processes |
| 2014: Medunsa Campus | : 6 (six) students were arrested and charged with malicious damage to property. |

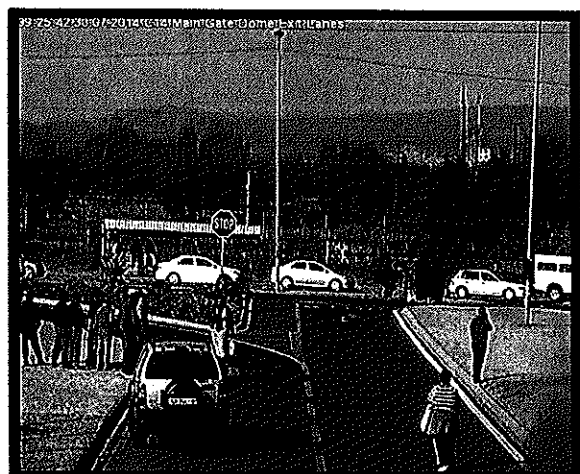
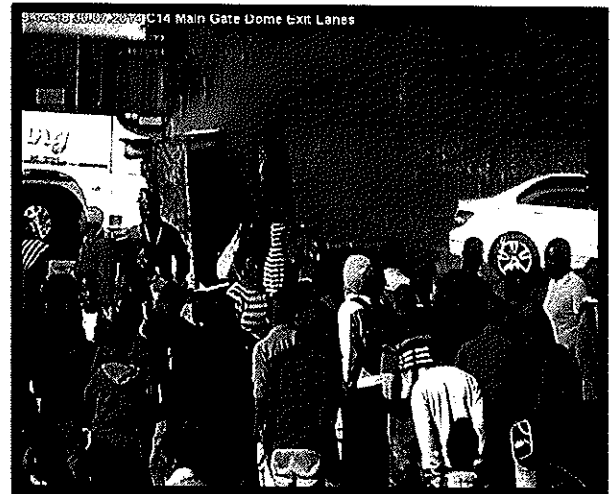
MEDUNSA CAMPUS 2014 STRIKE DAMAGES

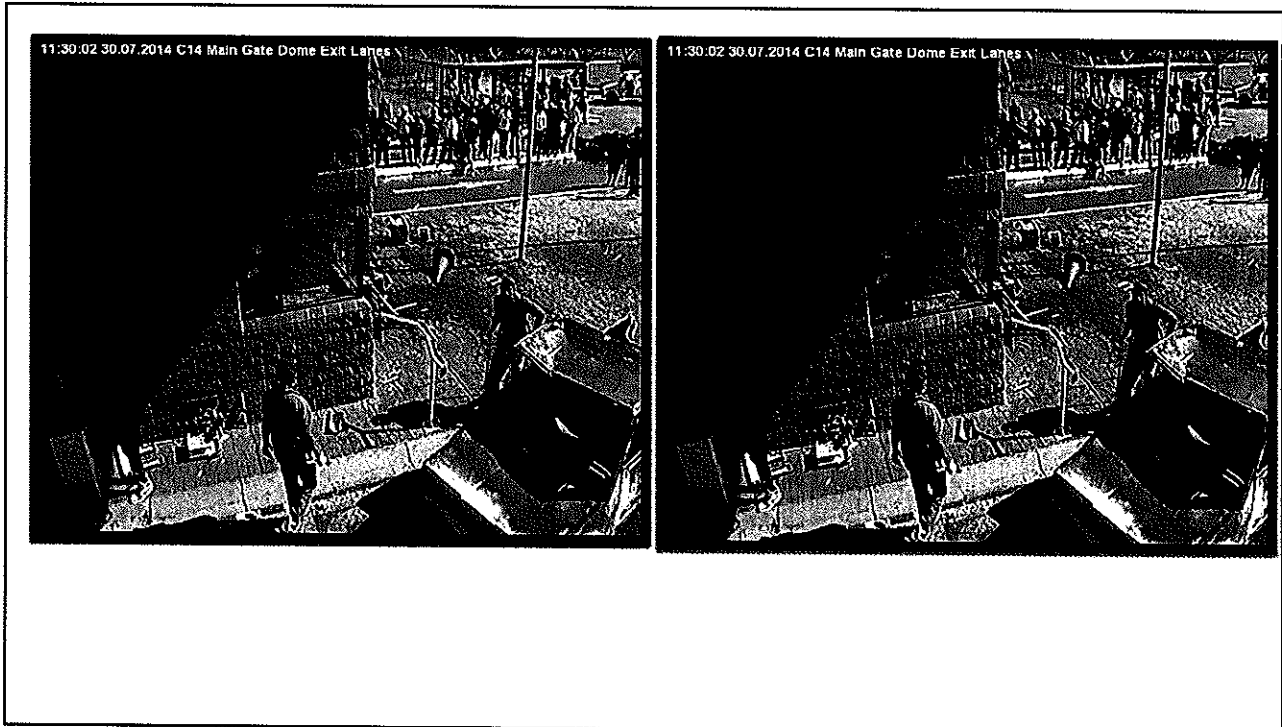
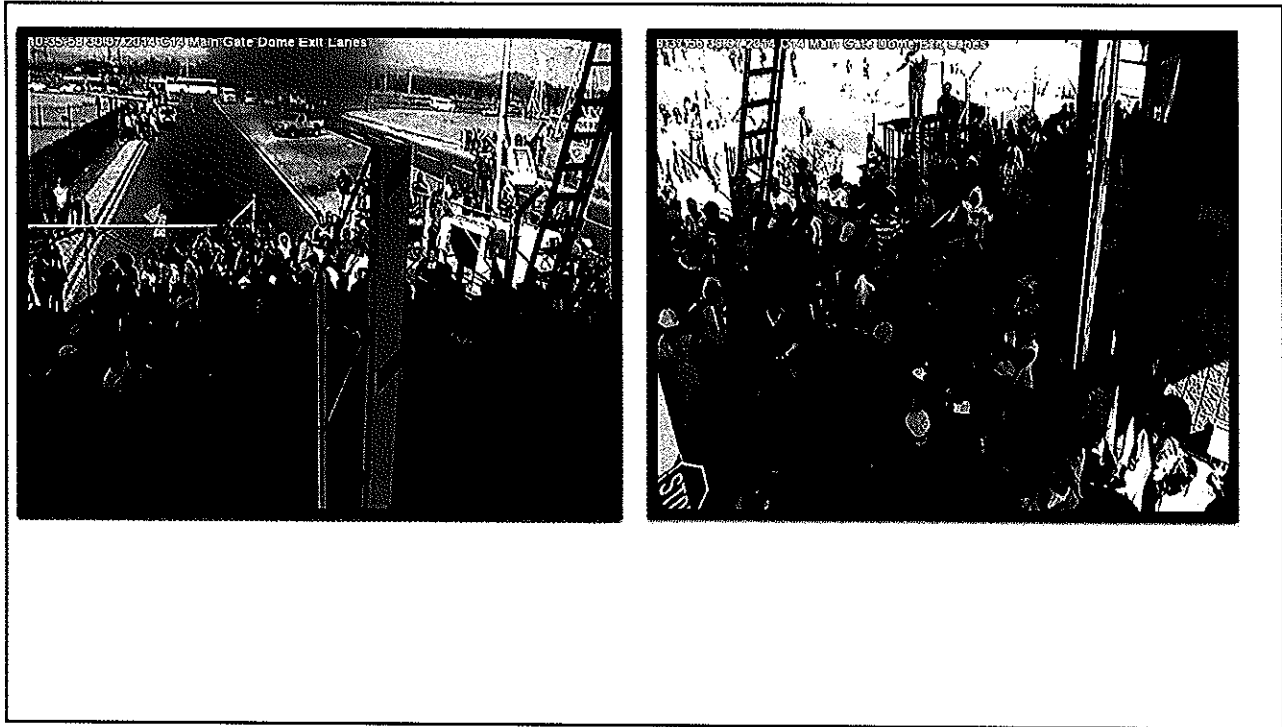


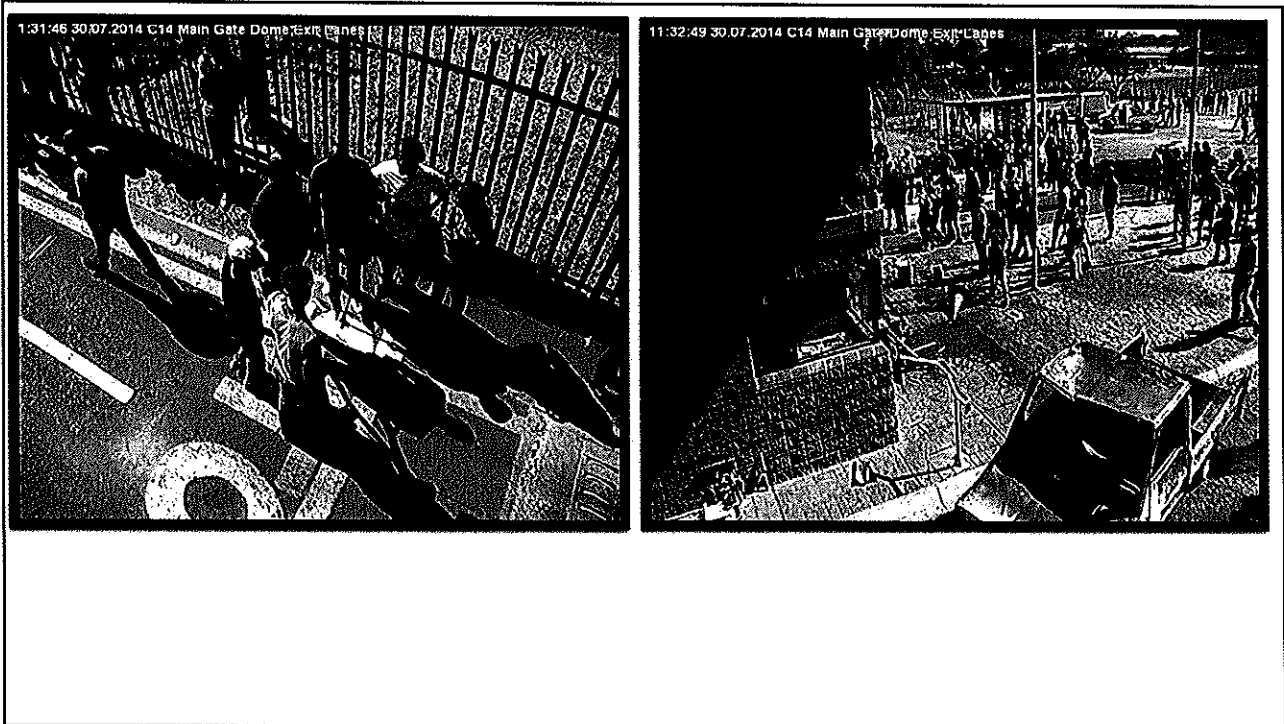
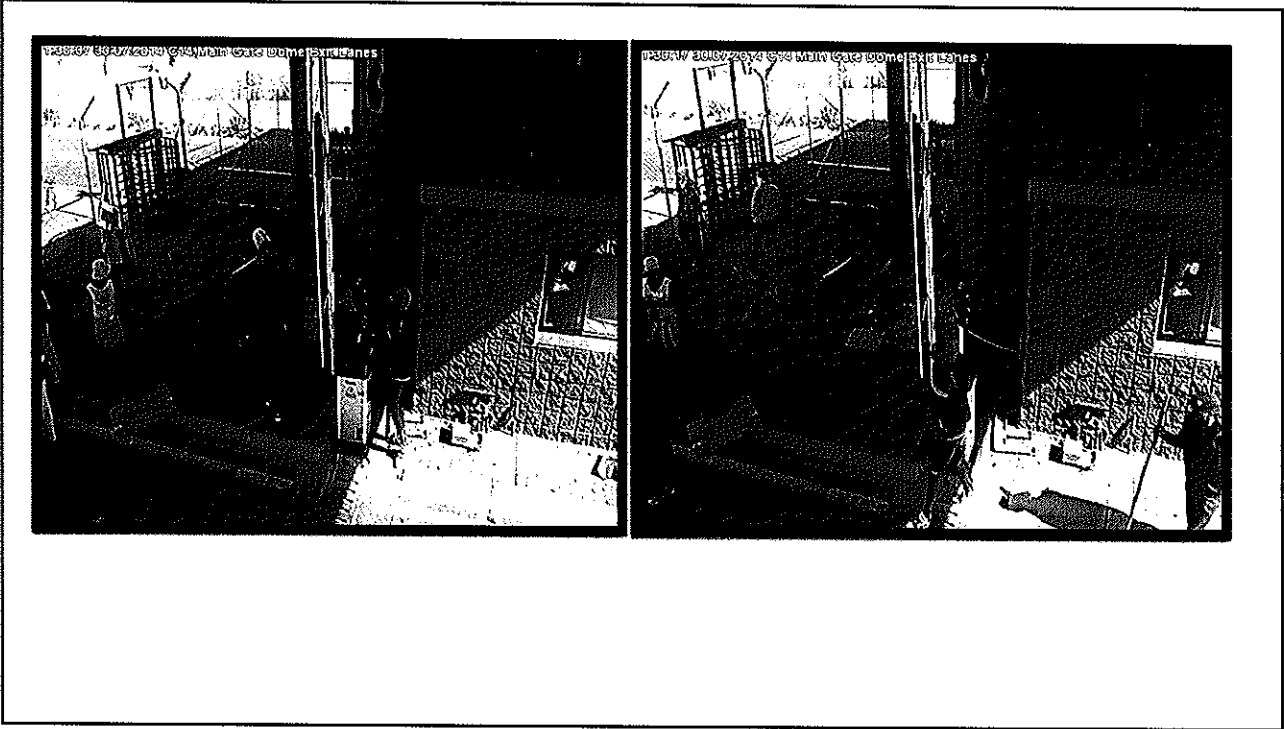
MEDUNSA CAMPUS 2014 STRIKE DAMAGES

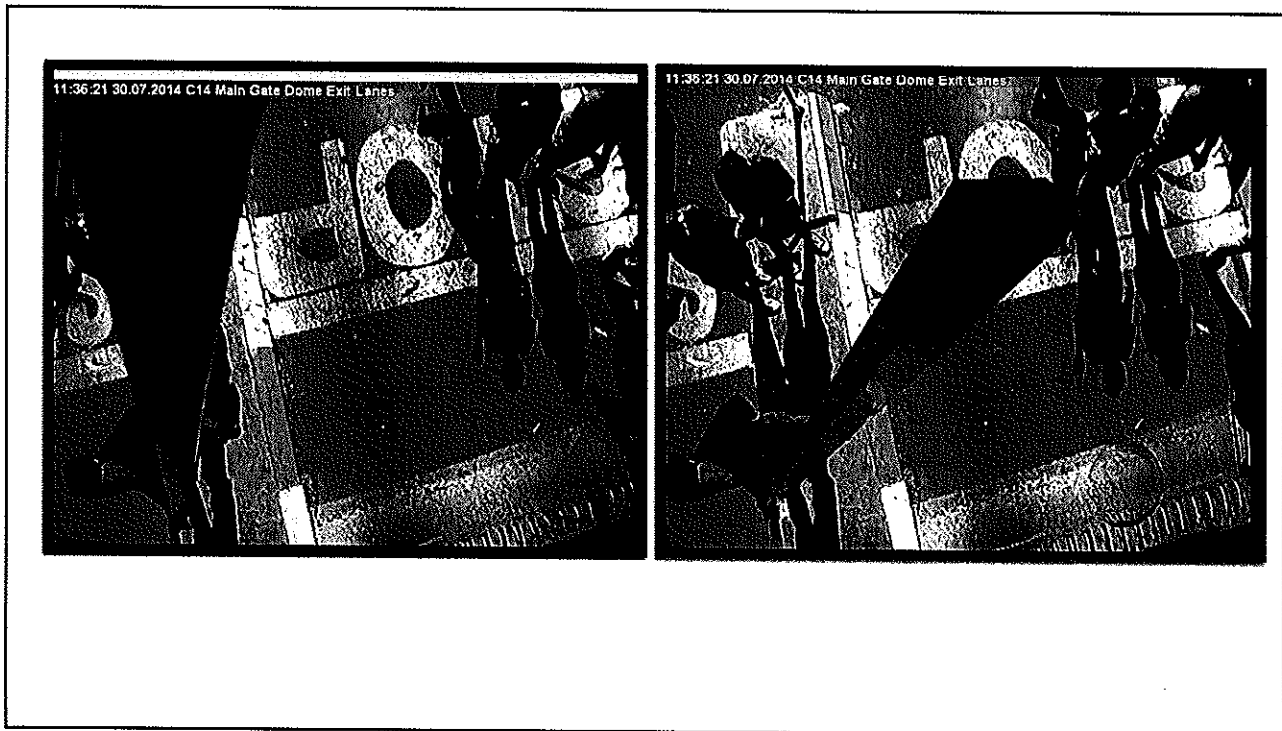
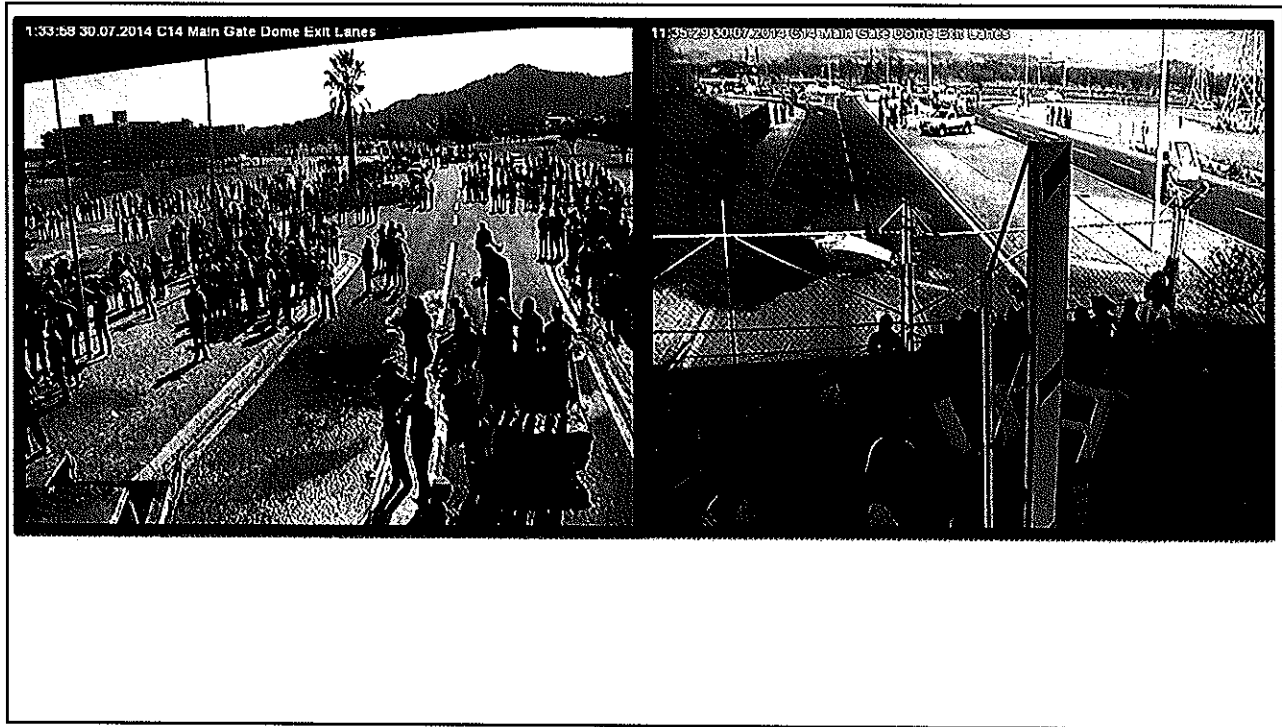


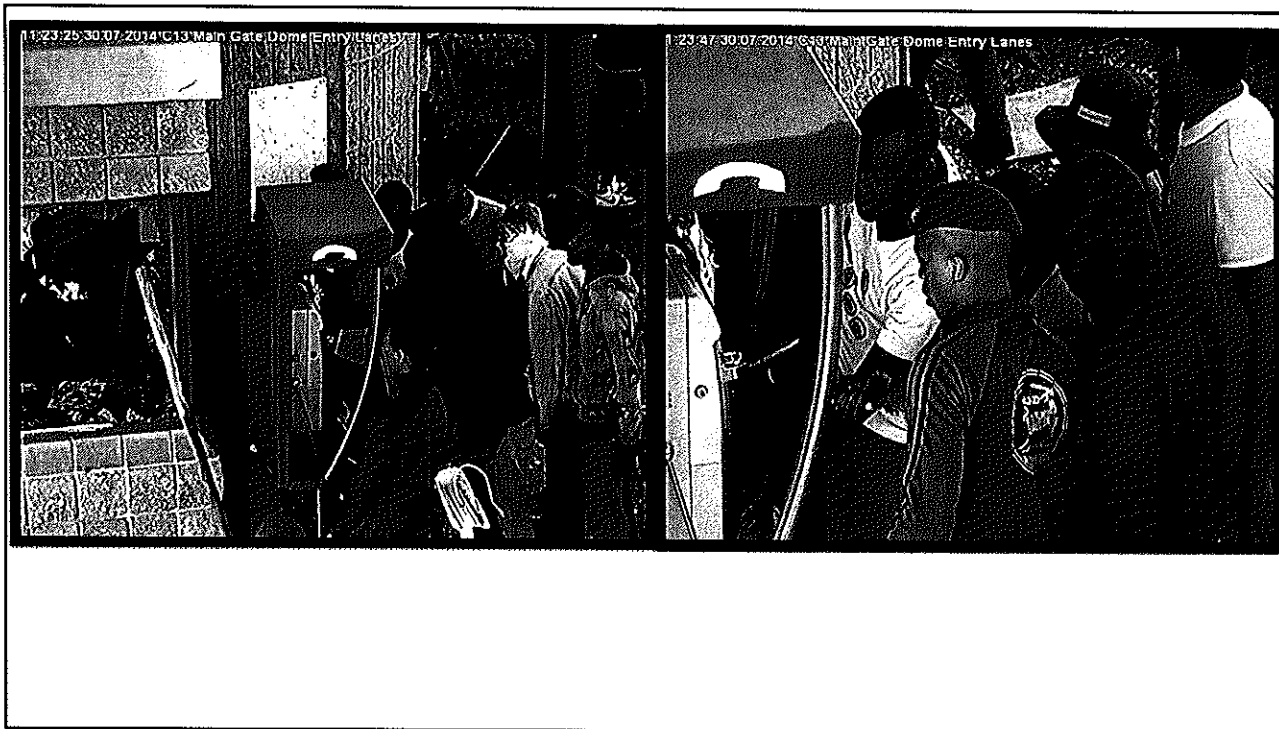




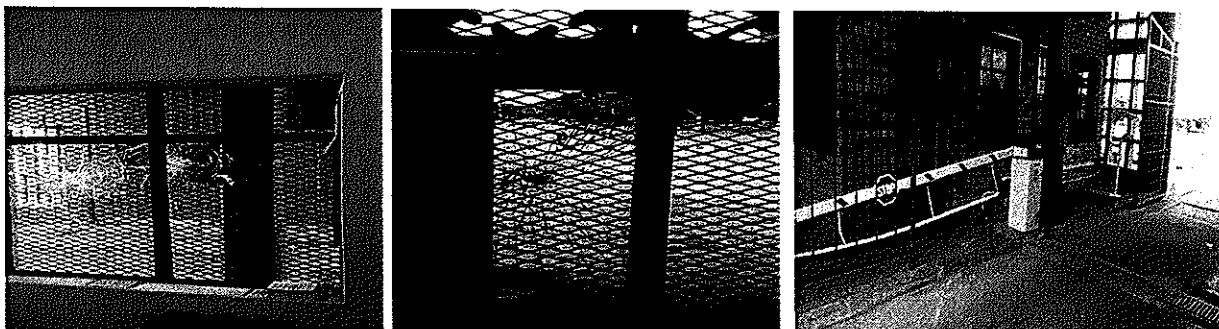




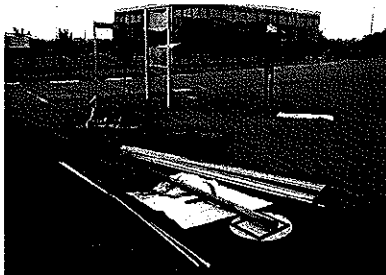
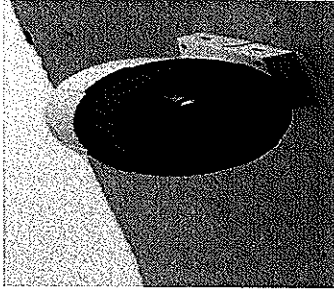


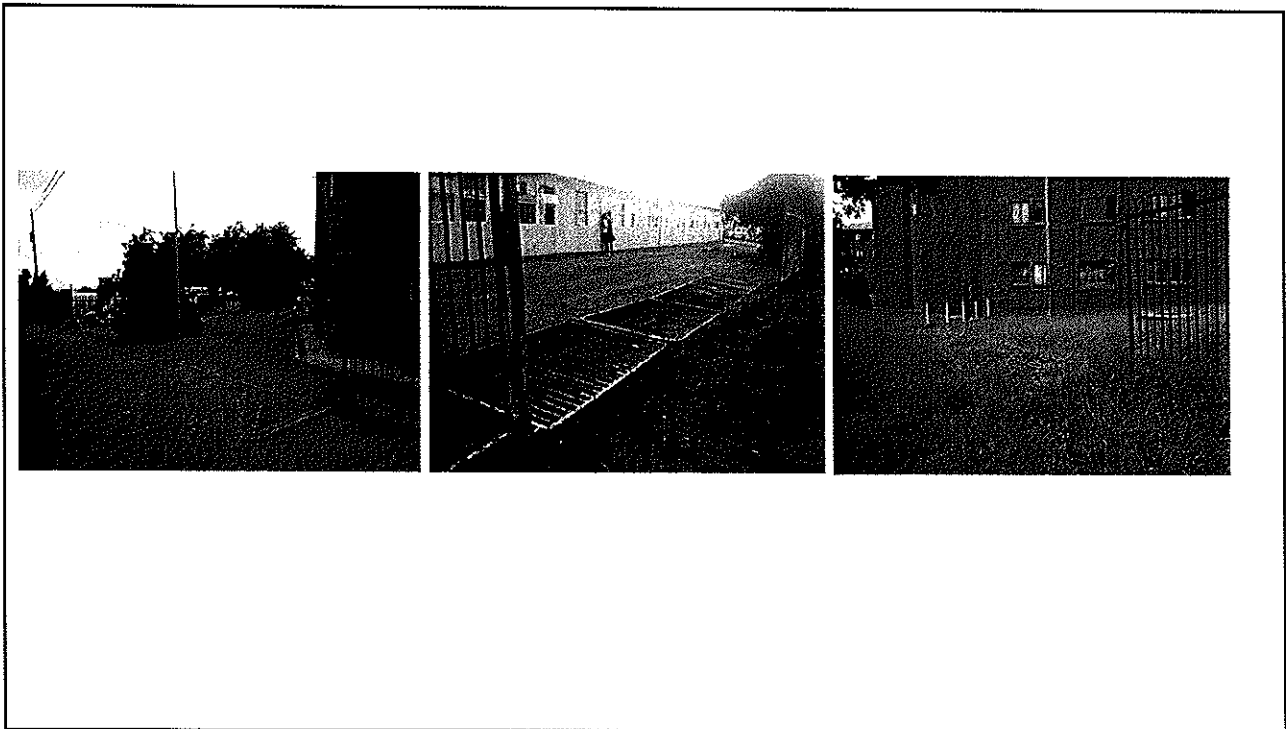
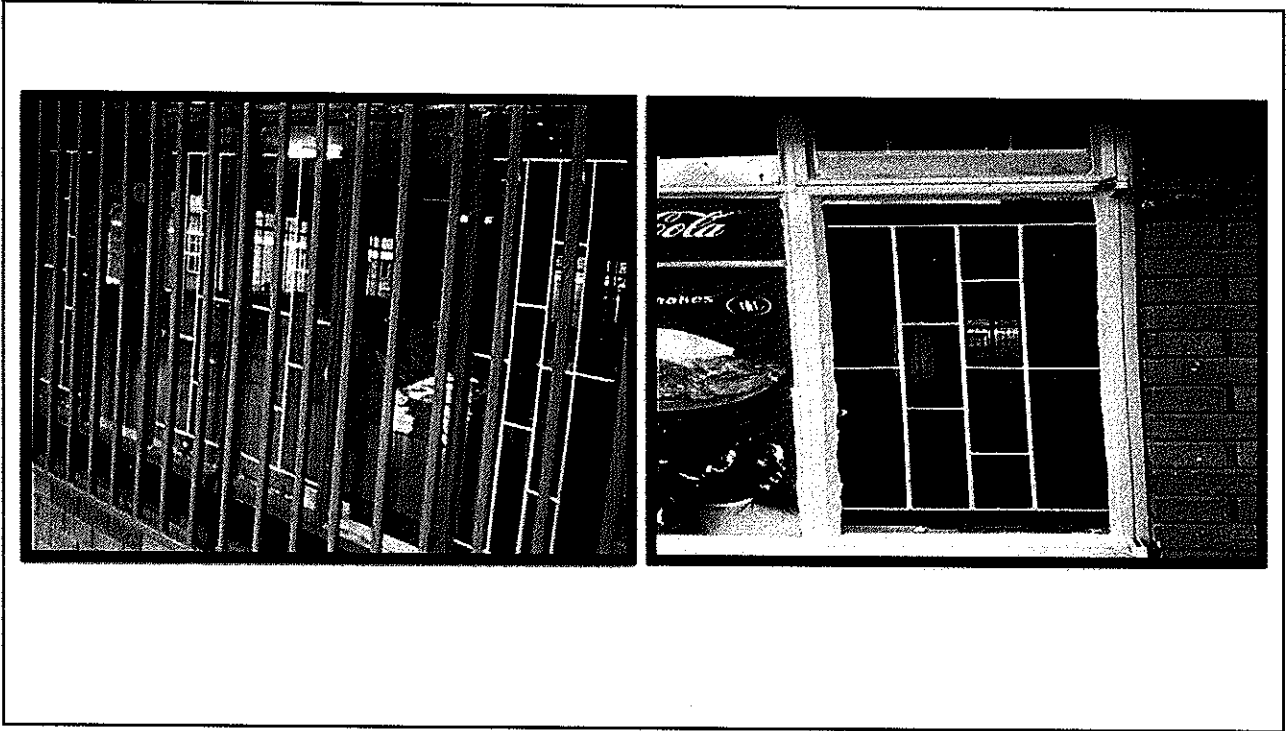


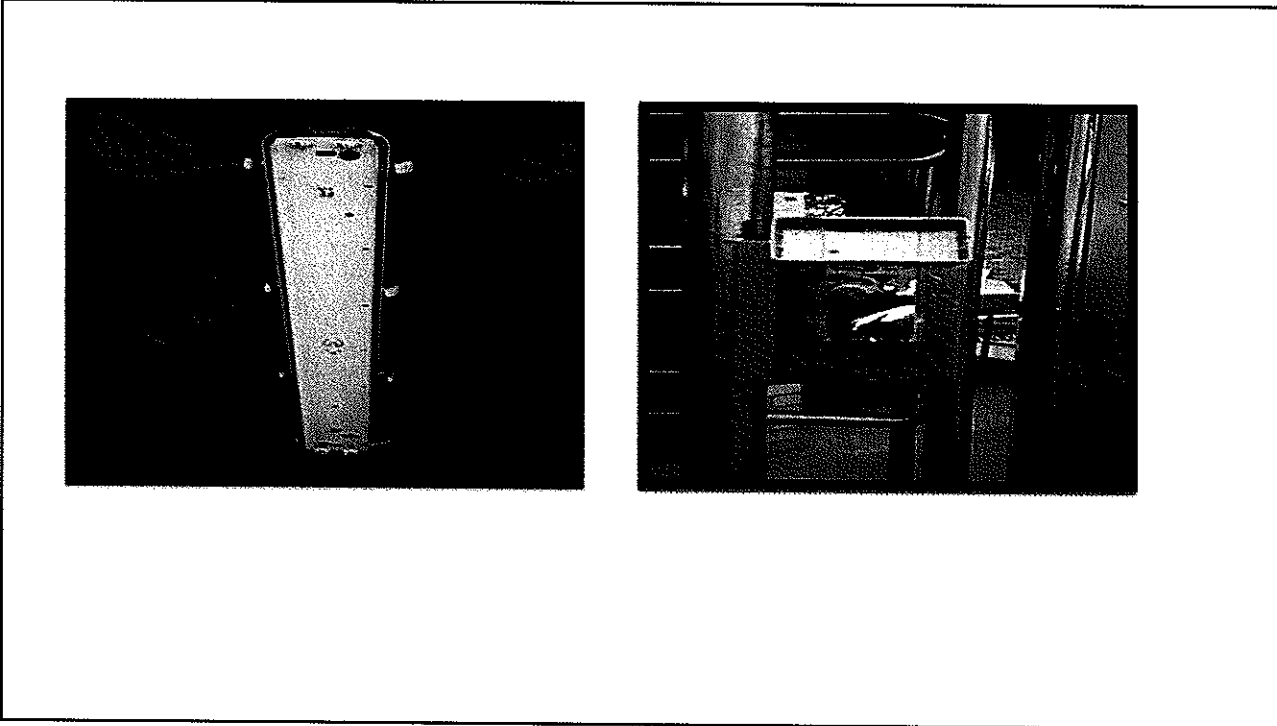
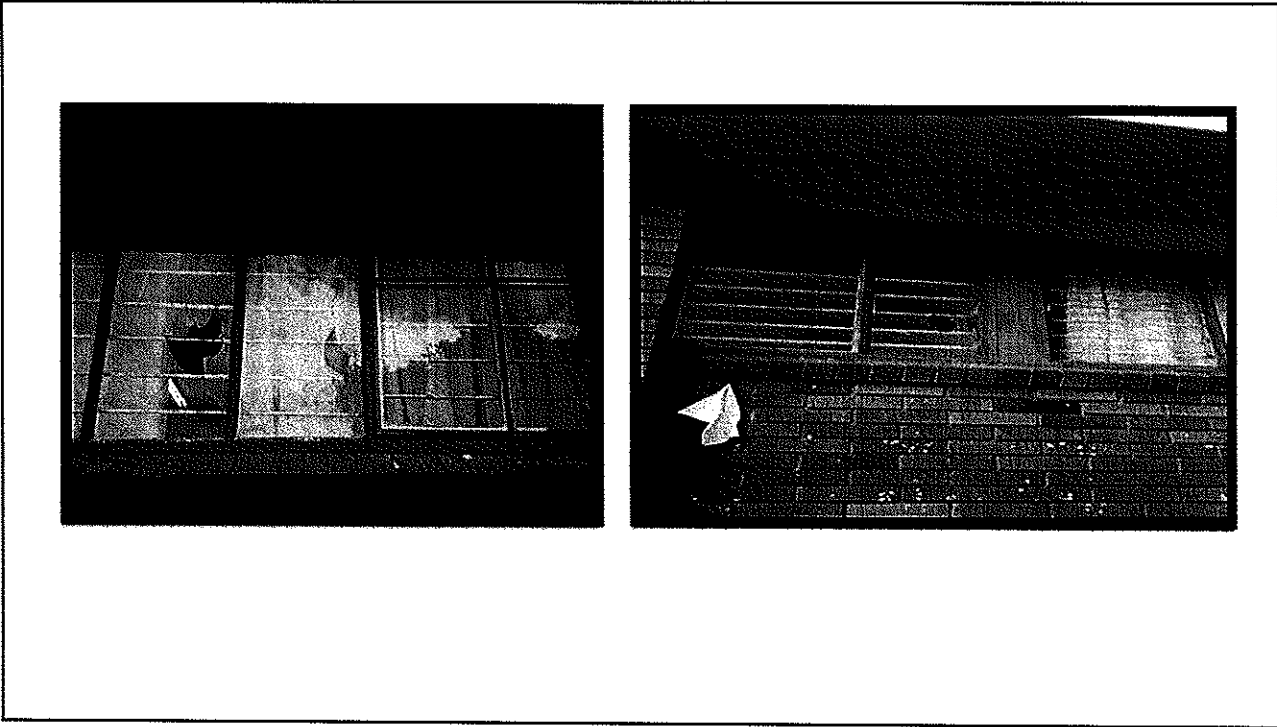
TURFLOOP CAMPUS 2013 STRIKE DAMAGES

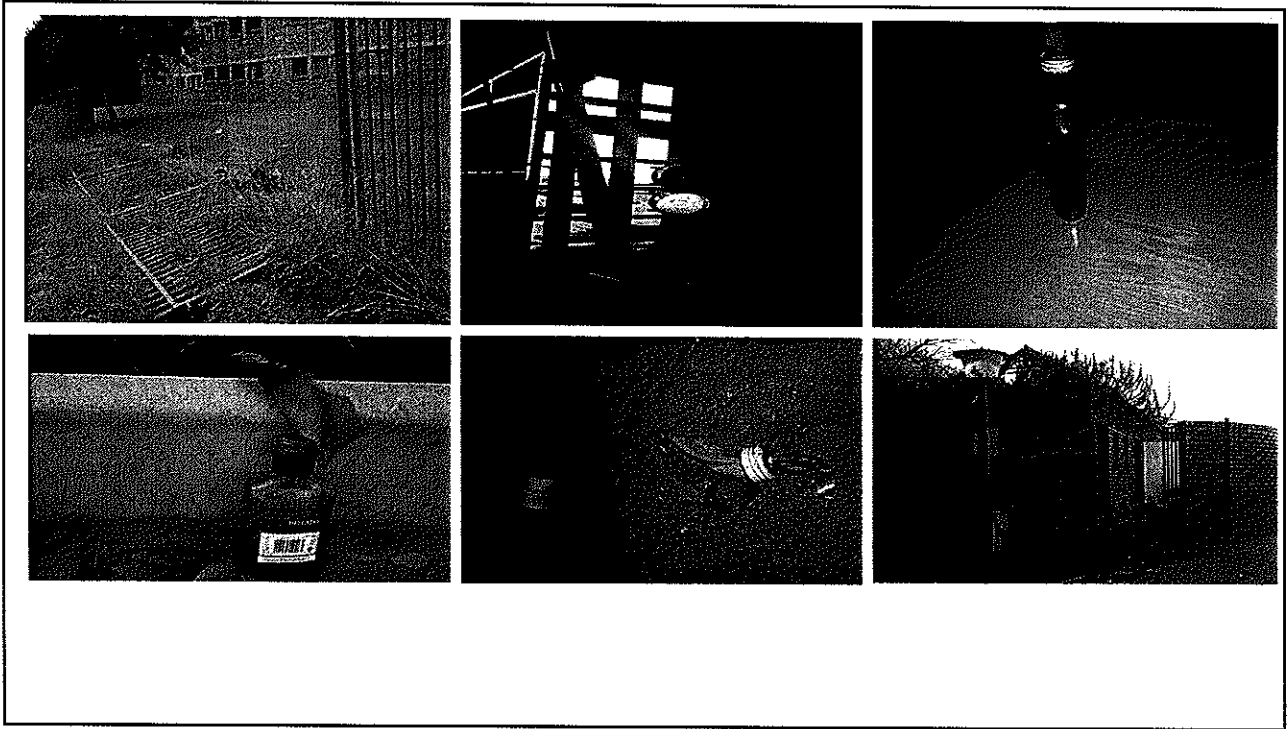


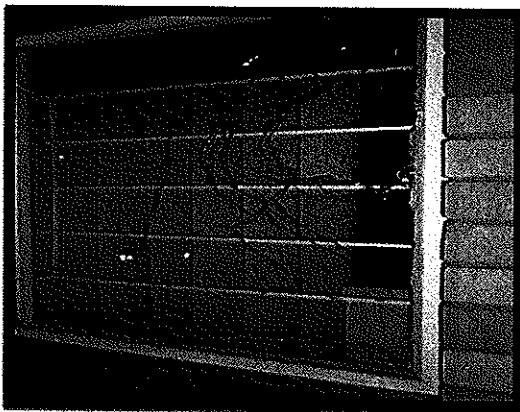
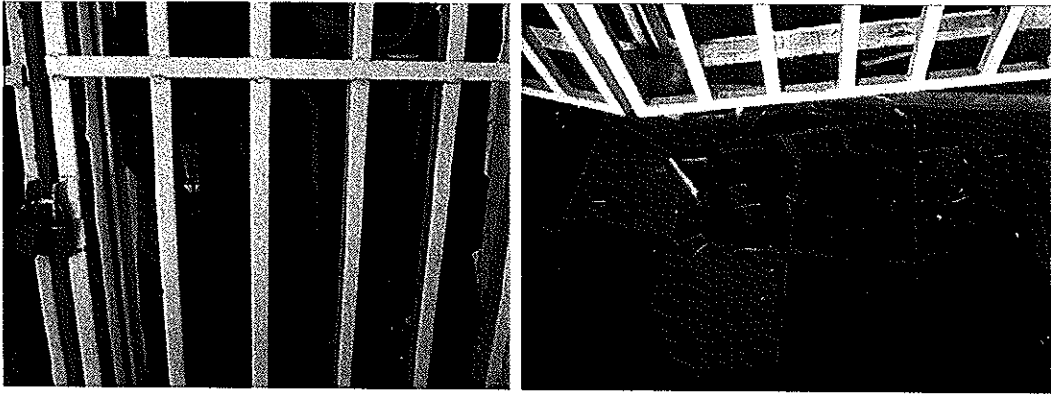
TURFLOOP CAMPUS 2013 STRIKE DAMAGES

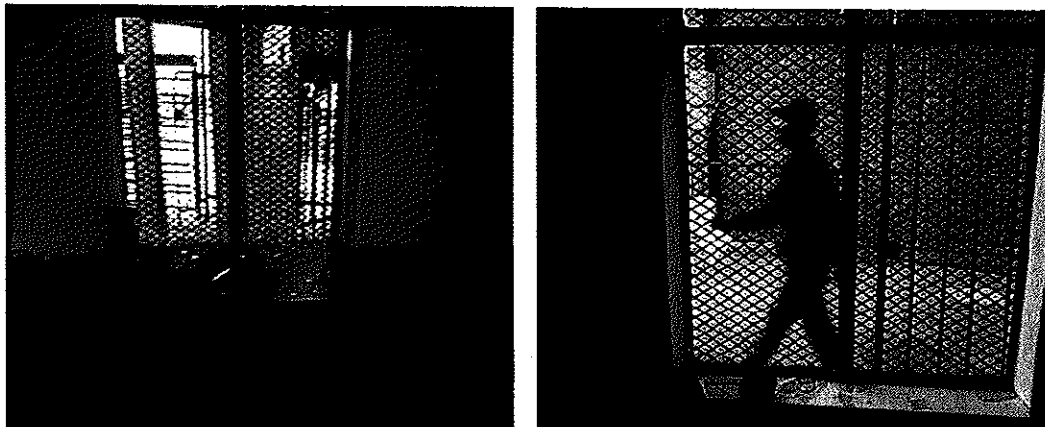




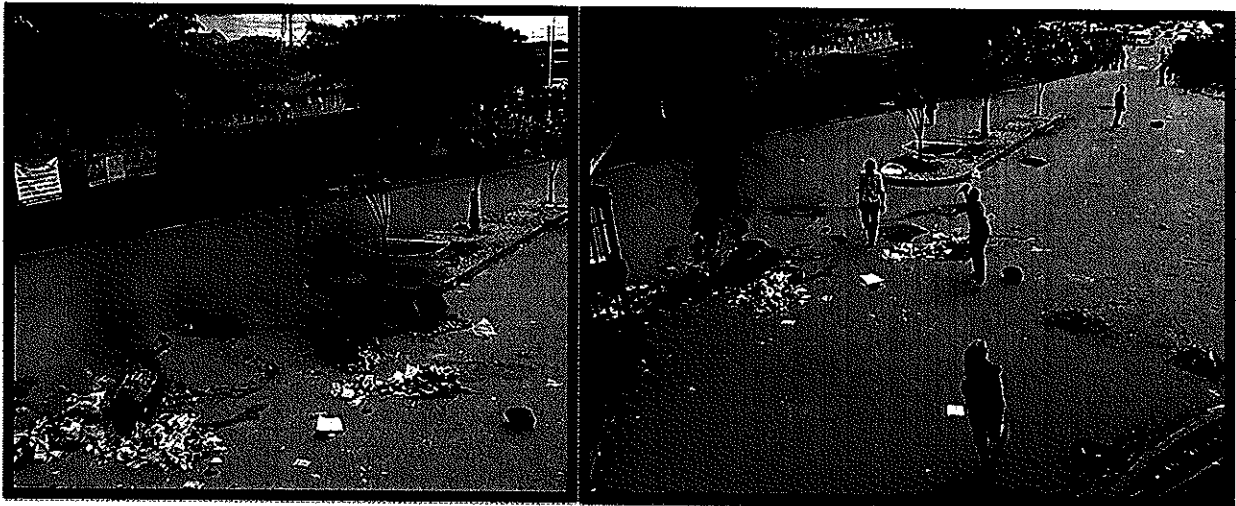


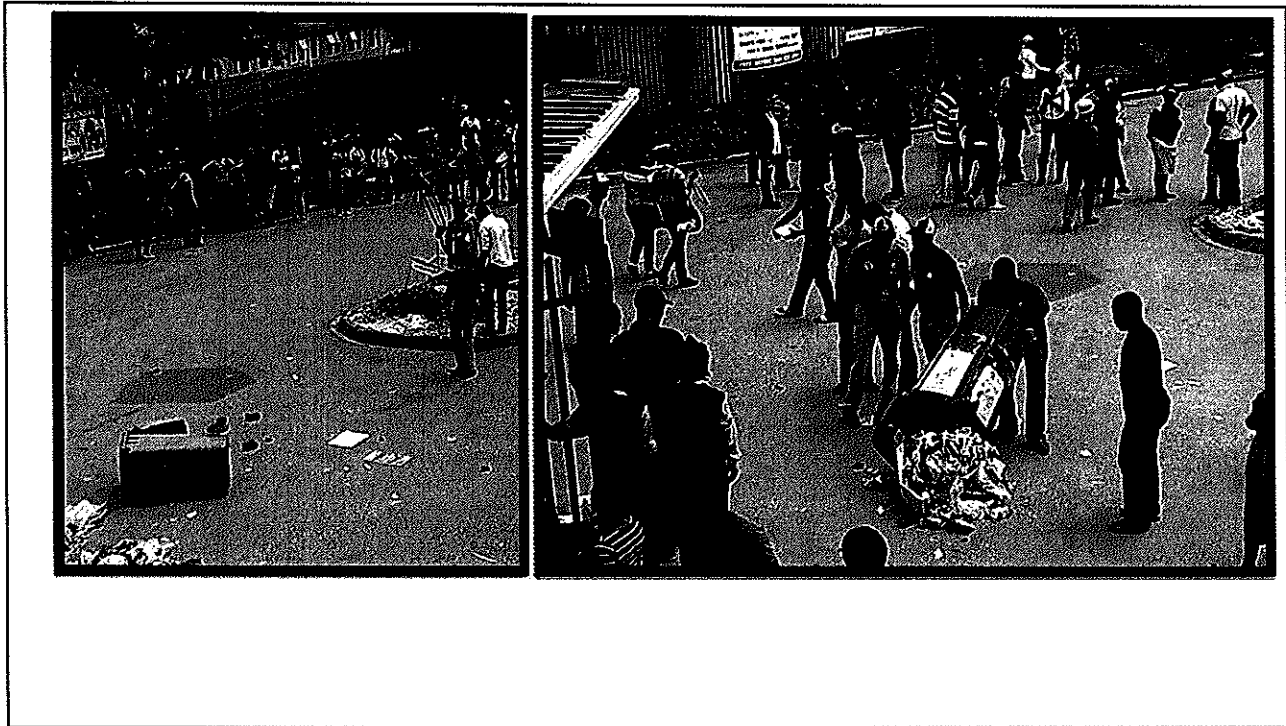
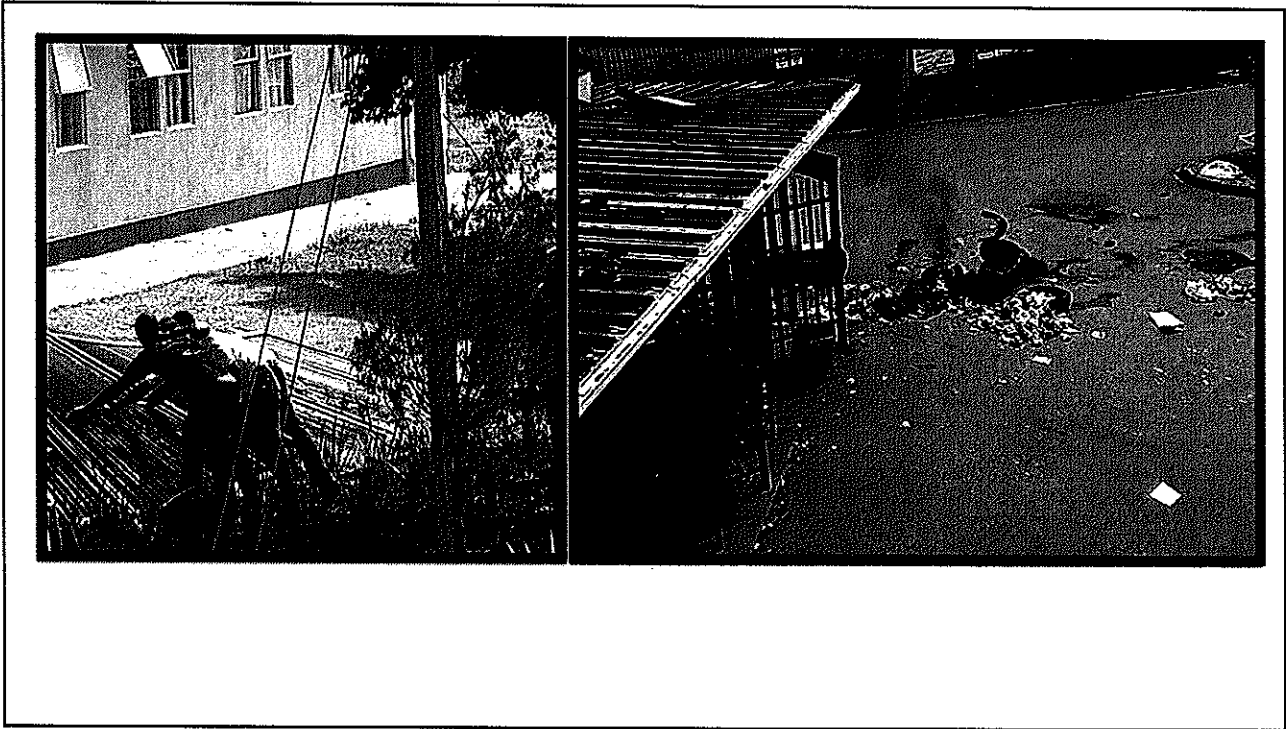






TURFLOOP CAMPUS 2014 STRIKE DAMAGES

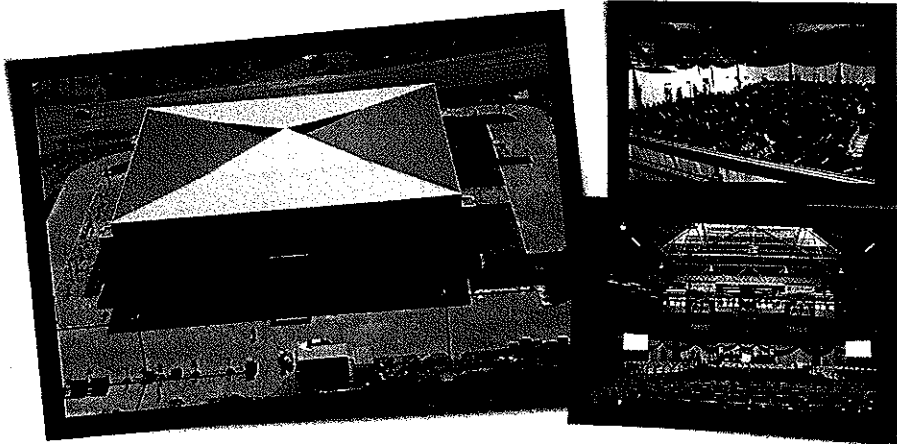




Infrastructure Developments



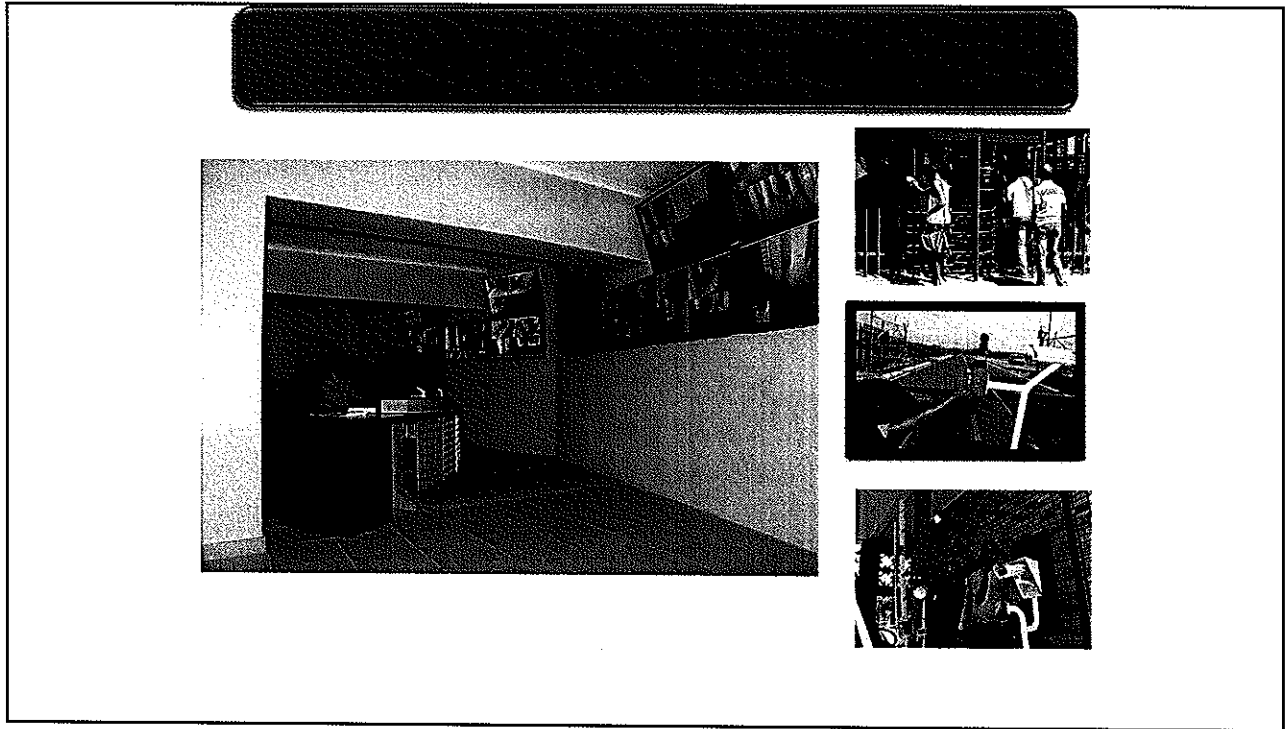
ANGLO PLATINUM MULTI-PURPOSE CENTRE



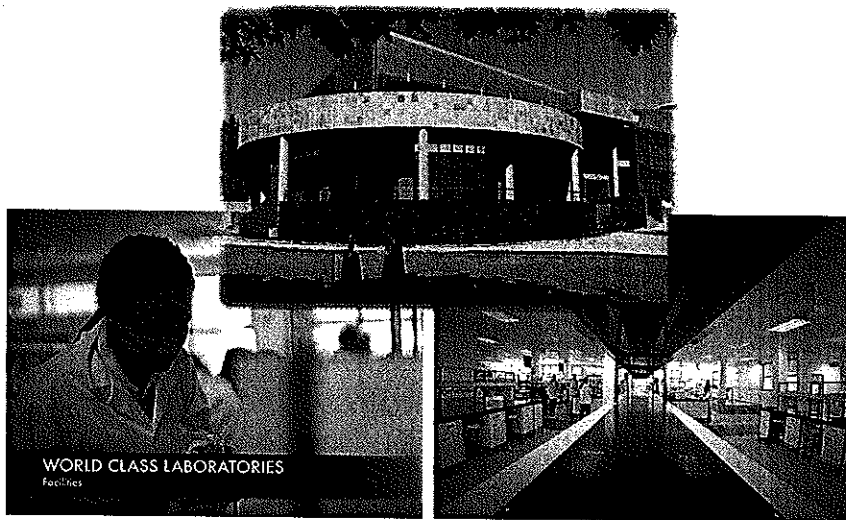
Department of Mathematics, Science & Technology Education's New Building



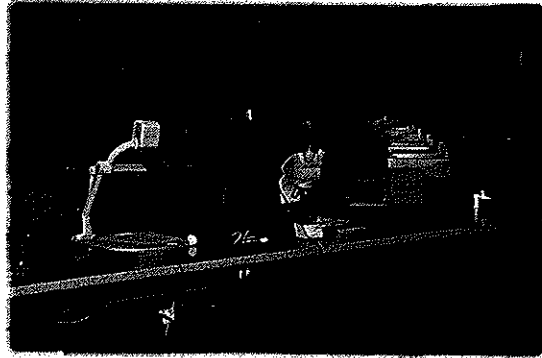
- To train qualified Mathematics and Science educators in Limpopo Province
- To allow a significant growth in the number of students enrolling in Mathematical Science and Technology in the School
- The building consists of four laboratories (Physics, Chemistry, Biology and Technology), Mathematics tutorial class, boardroom, 26 academic and administrative offices



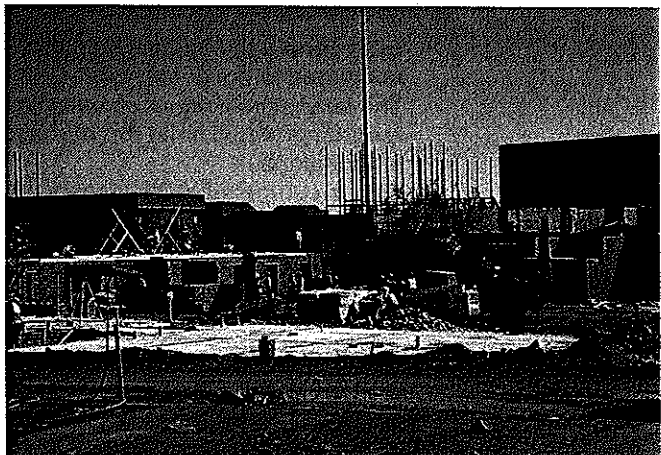
New Physical Science Laboratory

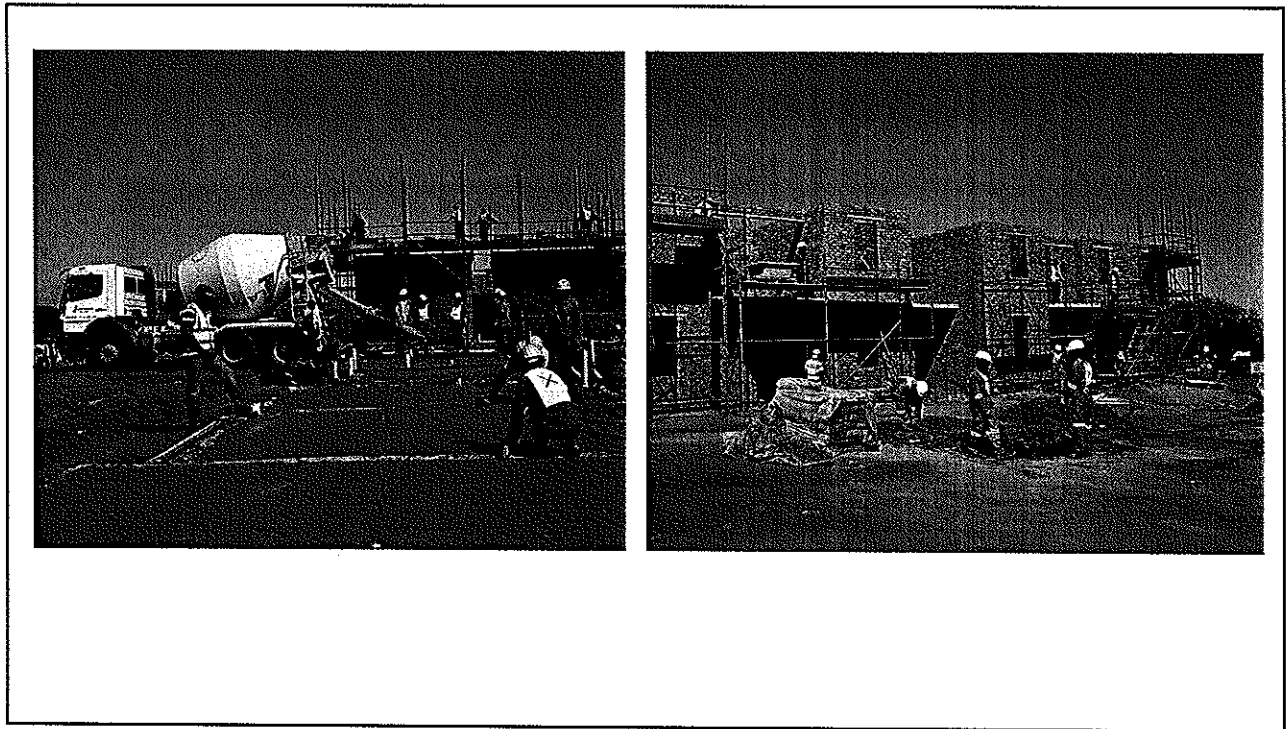


400 seater Life Science Lab



New Student Residence



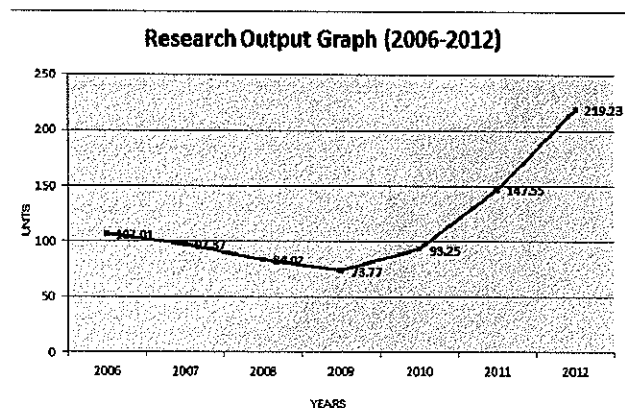


[REDACTED]

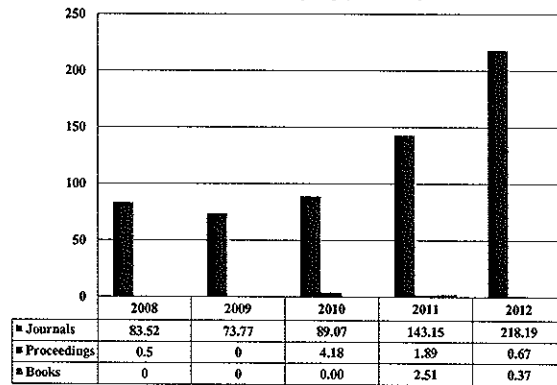
- **UL recorded the highest increase in subsidised research output as compared to previous years**
- **The Institution's research output has increased by 37 % after recording 147.55 units for journal article, books and conferences proceedings.**
- **This is compared to 93.25 units which was accrued in 2010.**

- Increase in Research Publication Output (2006-2012)
- UL in context of the Sector
- Per capita research publication output units (2008-2012)
- Percentage of total output units produced (2008-2012)
- Weighted Research Per Capita Output According to the Norms
- Permanently employed academics by qualification, 2012
- Recommendations

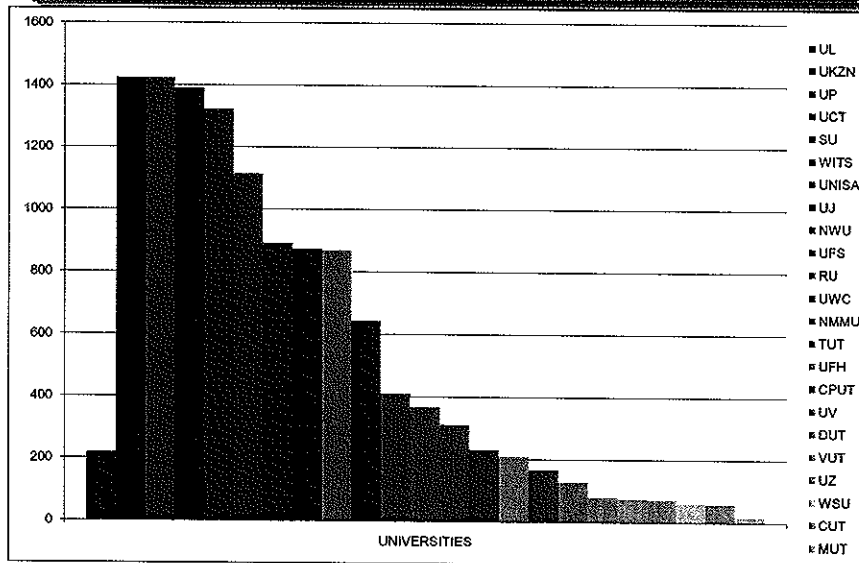
- Unaudited figures for 2013 are: 280.99 Units (DHET to confirm by end of 2014). Comes back usually lower than this. % increase from 2011 is 48.6%



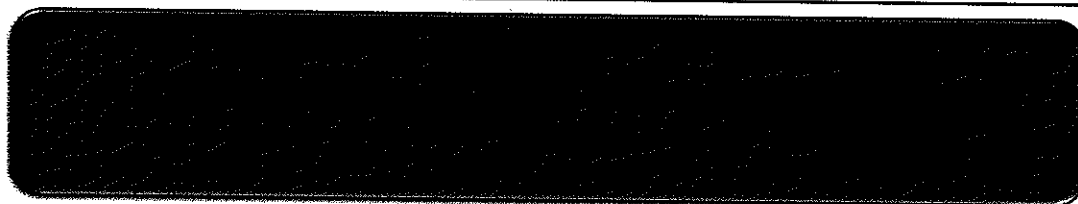
UL total research output units by type of publication, 2008-2012



51



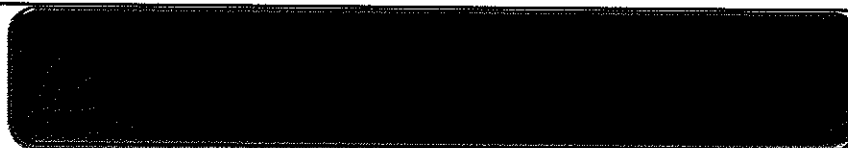
52



University of Limpopo

2012	2011	2010	2009	2008
0.27	0.18	0.12	0.10	0.11

53



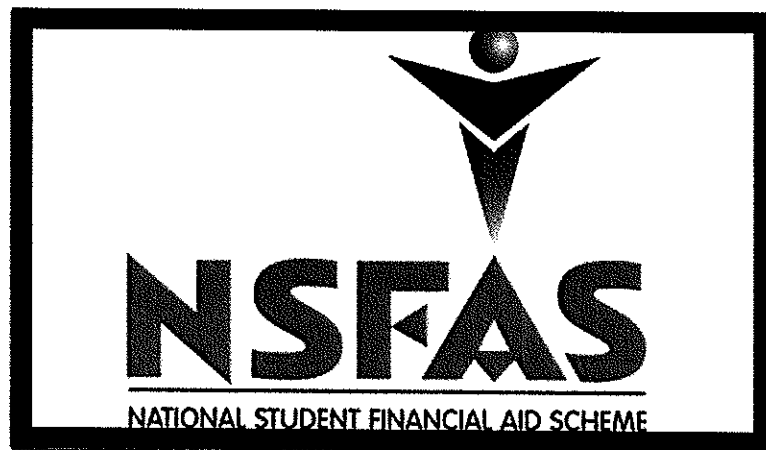
HEI	Headcount Permanently employed academics (a)	Research Publication s in Units (1)	Research Masters Graduate s in Units (2)	Doctorate Graduate s in Units (3)	Total Research Outputs in Units (1+2+3)	Weighted Output per capita (1+2+3)/a
UL	825	219.23	182.50	51	452.73	0.54

54



2012				2011			
PhD		Masters		PhD		Masters	
299	36.2%	132	16%	328	40.7%	147	18.2%

NSFAS Allocations



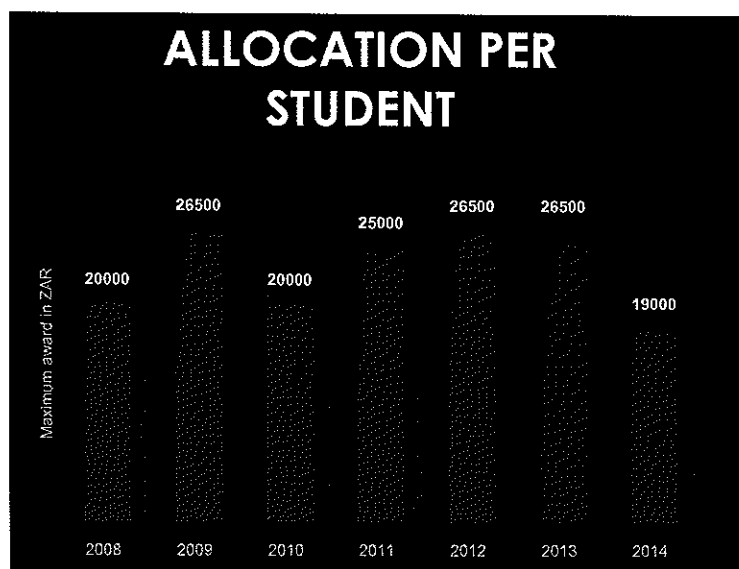
NSFAS Funding Allocation for 2014/15

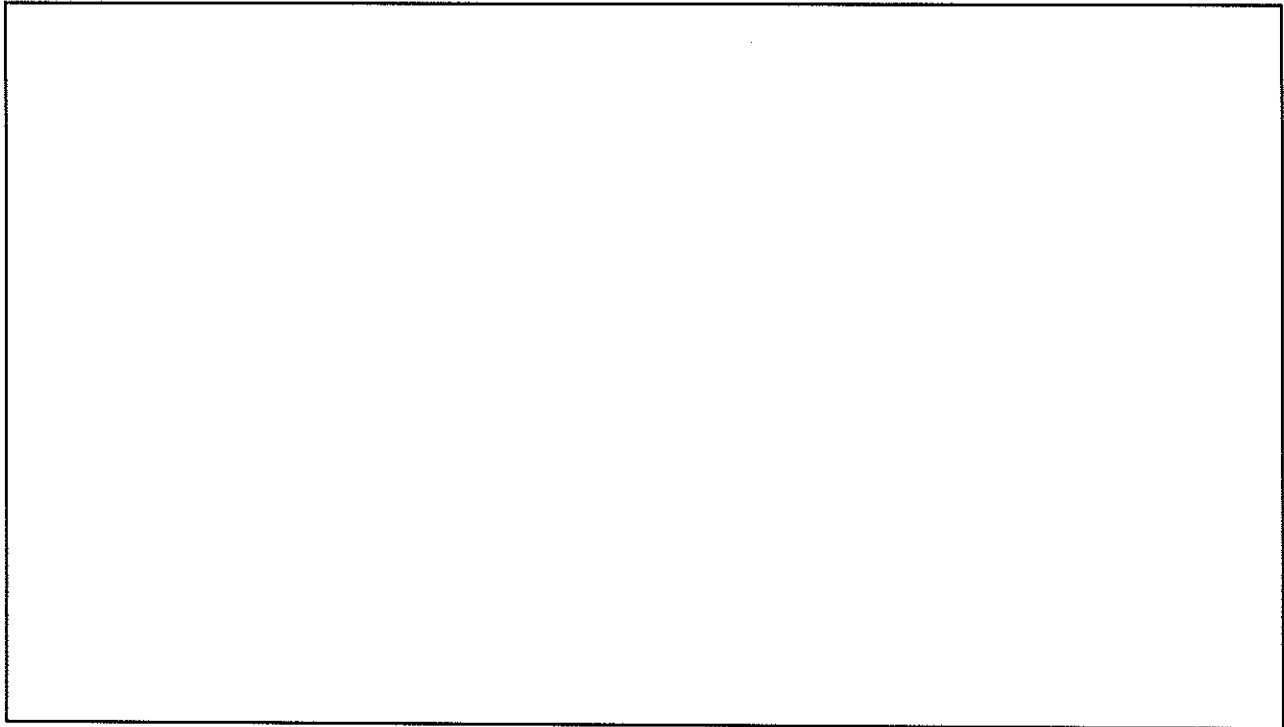
CATEGORY	2013	2014
DHET-General Funding	R160 019 039	R169 620 181.34
DHET- Teacher Training	R10 174 201	R10 784 653.11
DHET- Disability Funding	R3 388 564	R3 388 564.88
DHET- Final Year Programme	R94 675 121	R100 355 628.60
TOTAL ALLOCATION	R268 256 925	R284 149 027.93

National Skills Fund Category

Postgraduate Funding	R3 497 481.21
Scarce Skills & Disabilities	R22 738 242.33

ALLOCATION PER STUDENT

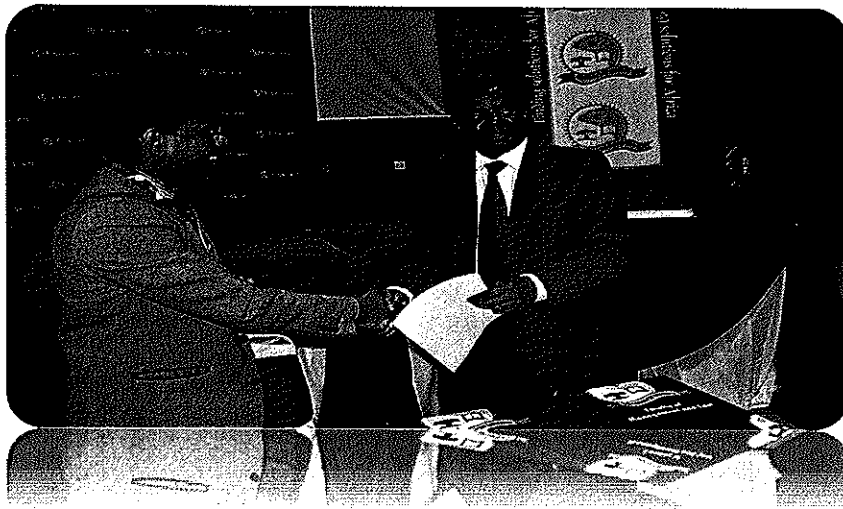




2013					
	FEMALE		MALE		TOTALS
	Academic	Admin	Academic	Admin	
Asian	10	2	7	2	21
Black	207	563	318	474	1 562
Coloured	5	2	1	3	11
European	56	92	34	34	216
TOTAL	278	659	360	513	1 810
2014					
	FEMALE		MALE		TOTALS
	Academic	Admin	Academic	Admin	
Asian	10	2	7	2	21
Black	201	557	315	466	1 539
Coloured	4	2	3	3	12
European	55	86	37	34	212
TOTAL	270	647	362	505	1 784

6.2.1. BRAZIL AND SOUTH AFRICA (IBSA) NANOTECHNOLOGY FLAGSHIP PROJECT

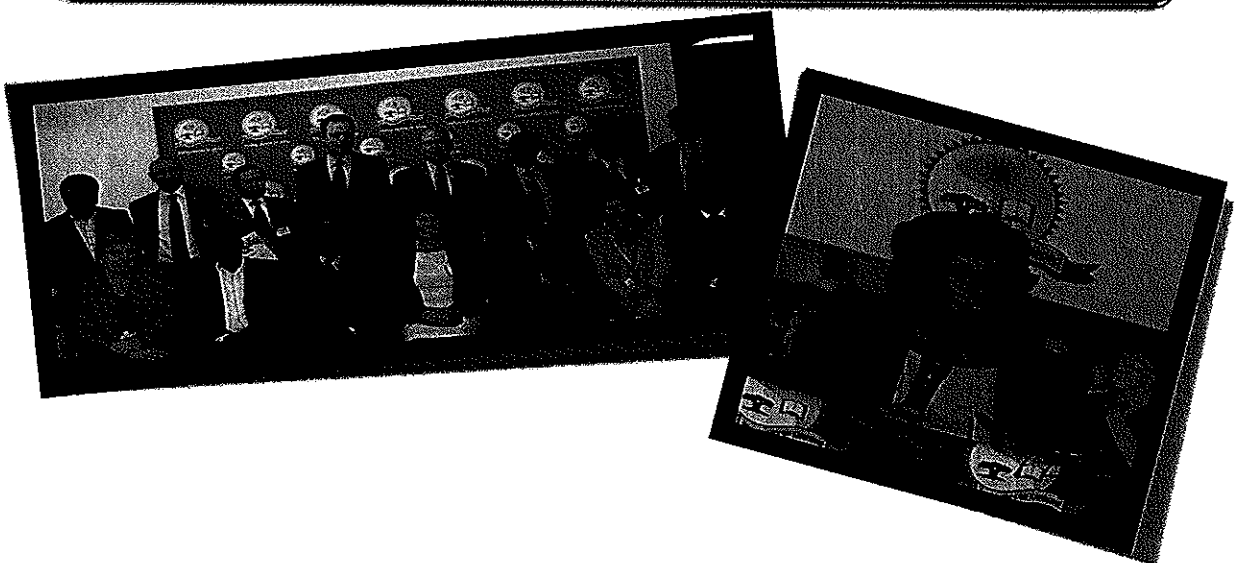
- UL researchers will conduct a research that will help to develop gas sensing devices which can be used to minimise injuries and deaths caused by explosions in the mines.
- This is a one-year flagship project, valued at R1 125 000, funded through the South Africa's Department of Science and Technology (DST)



[Redacted Title]

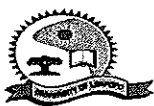
- In 2010, UL and the Flemish Interuniversity Council (VLIR)-University Development Co-operation (UOS) signed an agreement to inaugurate a joint academic research programmes for five years
- The programme is sponsored by the Belgian Government with 1,500,000.00 Euros in the first year and 750 000 Euros per annum from year two to five

[Redacted Title]



- UL has successfully conducted the first ever study to determine and comprehend the population density at Capricorn District Municipality (CDM).
- The R7, 5 million project, earmarked for helping the Municipality improve service delivery in the area, will guide the government in the creation of development programmes and explain the qualities of the CDM population.

- The purpose is to provide affordable internet access to ordinary households who would otherwise not have it
- This is a partnership between Microsoft SA, Multisource, DST & the CSIR's Meraka Institute and UL



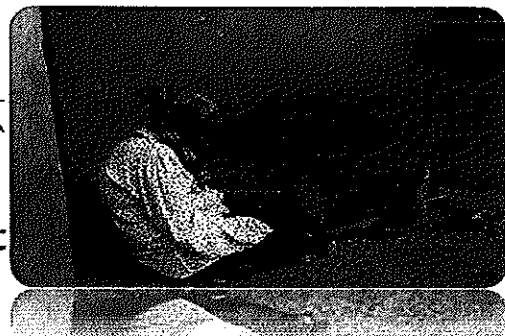
science
& technology
Department
Science and Technology
REPUBLIC OF SOUTH AFRICA

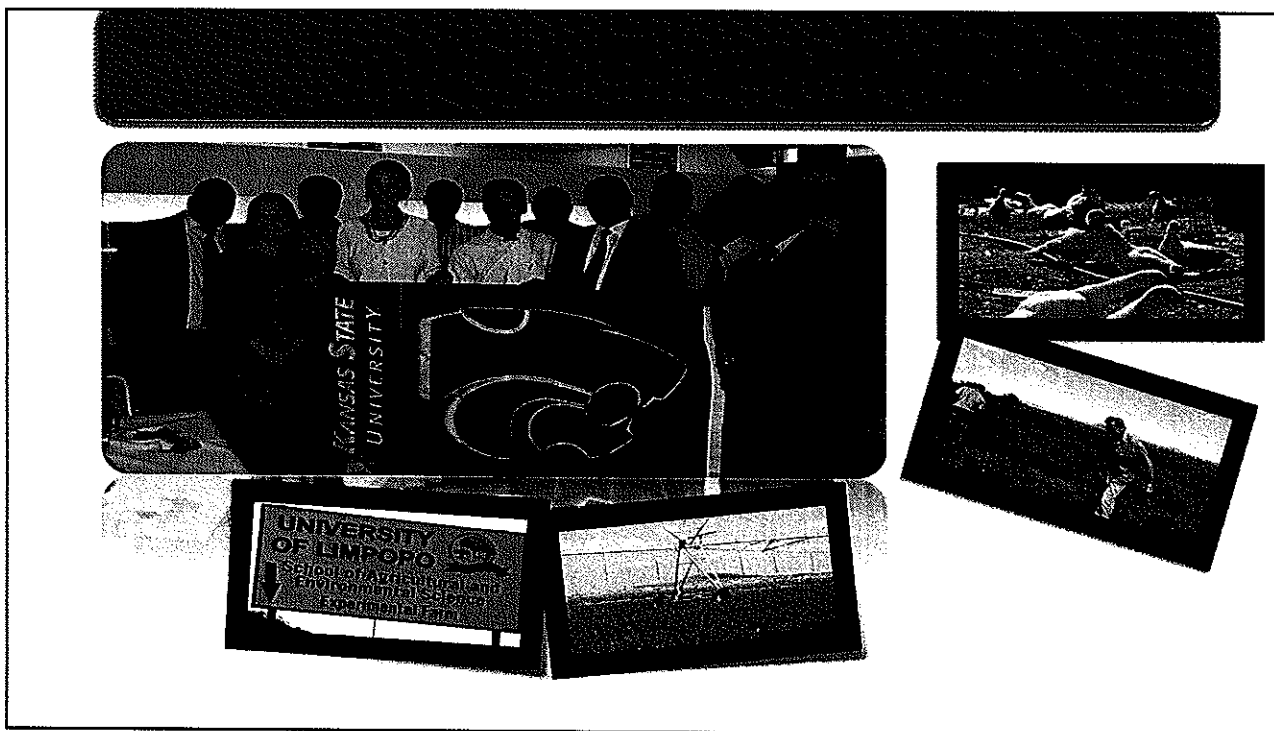


multisource
Your Single Wireless Connection. A World of Games.



Microsoft

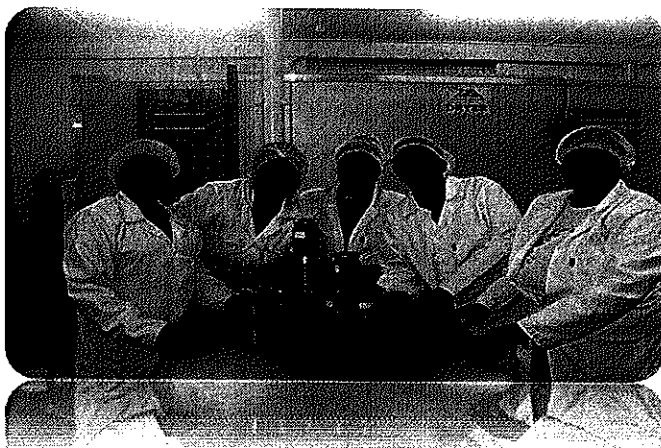




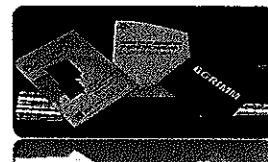
UL is in partnership with Kansas State University in the United States of America, ZZZ, Eduardo Mondlane University in Mozambique and Limpopo Provincial Department of Agriculture

- **The partnership is in agriculture and envisioned to address food security issues and incorporate student and staff exchange programmes**

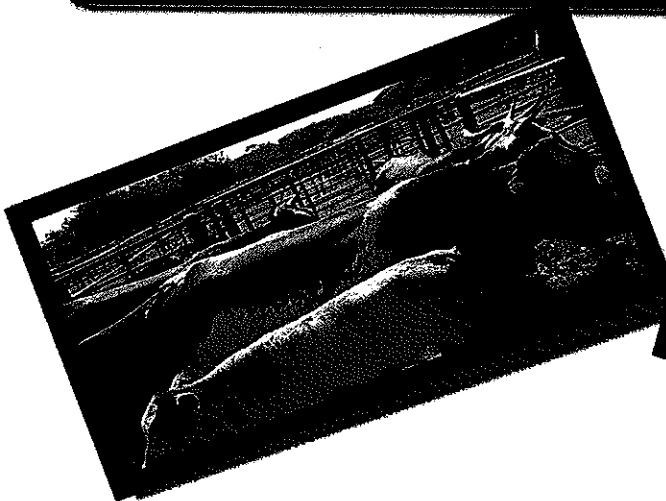
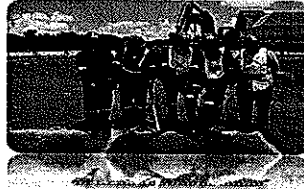
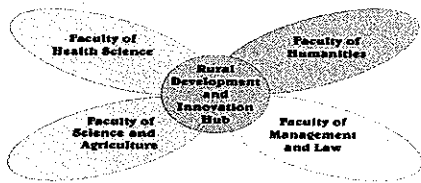
LIMPOPO AGRO-FOOD TECHNOLOGY STATION (LATS)



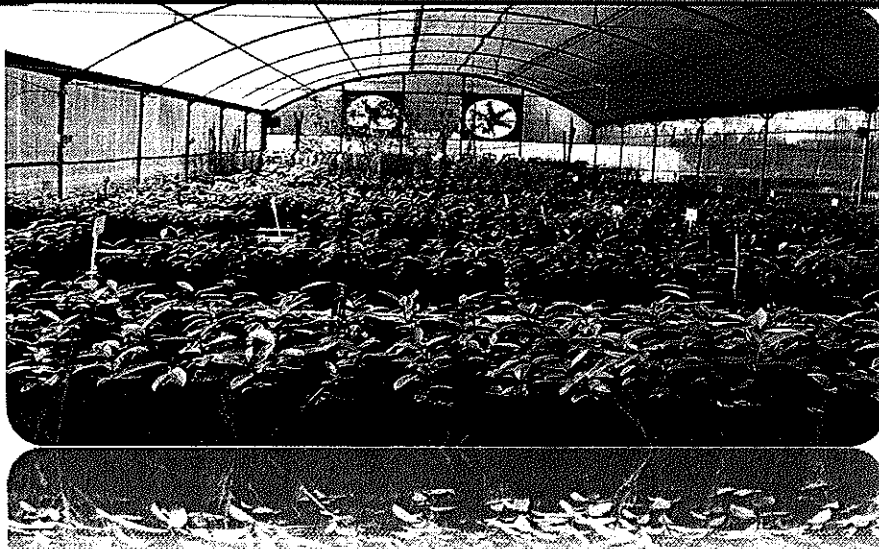
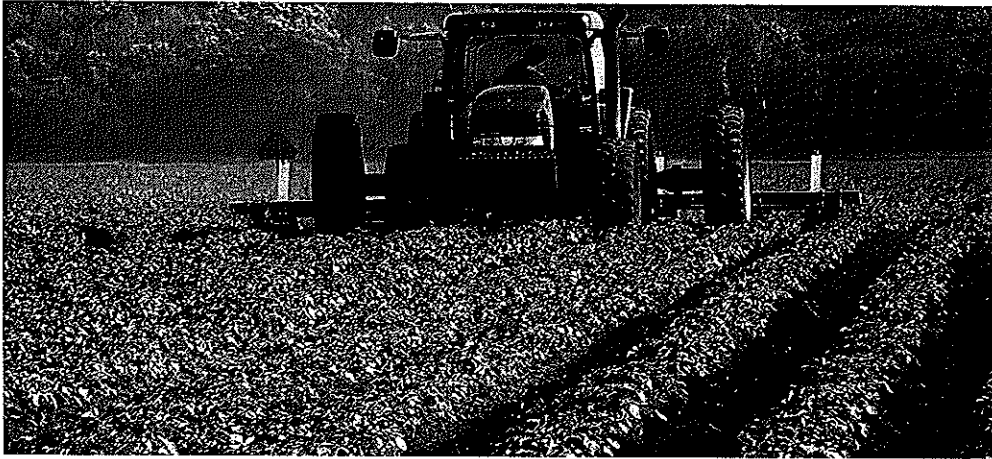
BEIJING GENERAL RESEARCH INSTITUTE OF MINING AND METALLURGY PARTNERSHIP



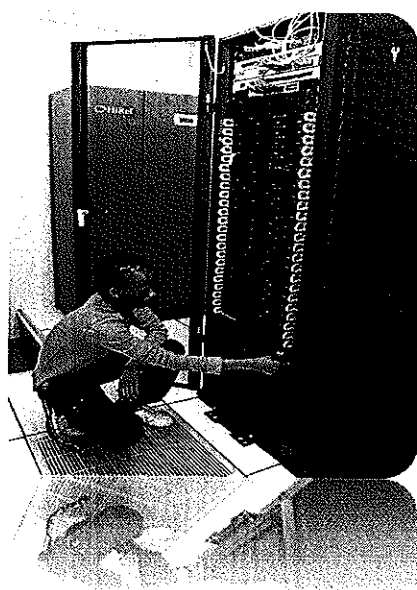
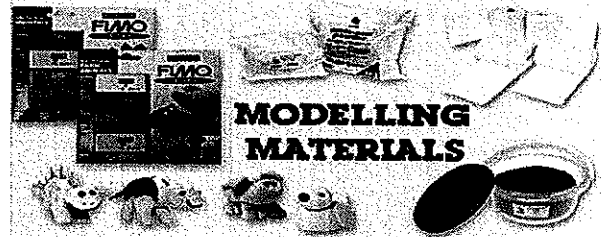
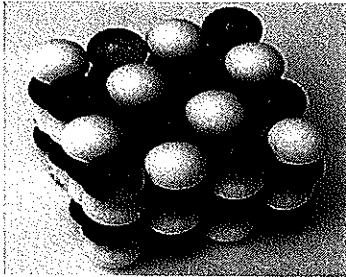
- The Rural Development and Innovation Hub of the University of Limpopo was established to facilitate the integration and focus of the efforts of faculties, schools departments to advance the mission and vision of the university in finding development and innovative solutions



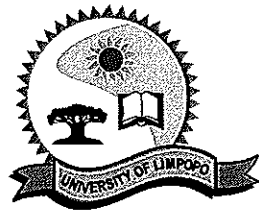
AGRICULTURE



MATERIALS MODELLING CENTRE



Next Generation of Academics



THANK YOU

