



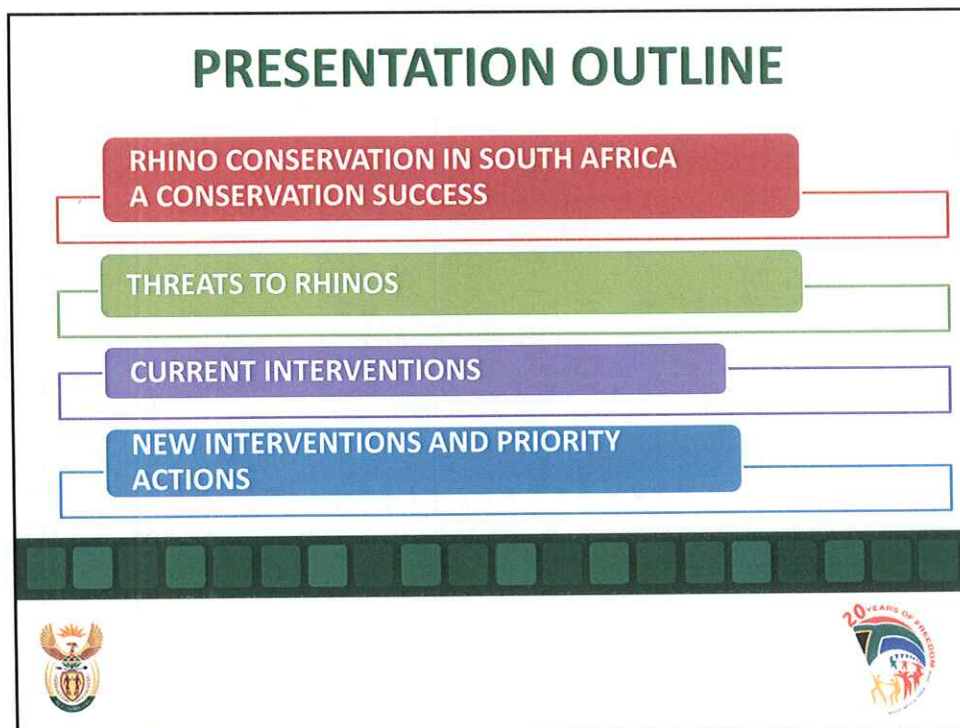


**RHINO POACHING**

Portfolio Committee on Environmental Affairs  
19 August 2014





 **UNITE AGAINST  
RHINO POACHING** | **SAVE OUR RHINO**

**ANTI-RHINO POACHING HOTLINE  
0800 205 005**  
CALL CENTRE: 086 111 2466  
WEBSITE: [www.environment.gov.za](http://www.environment.gov.za)

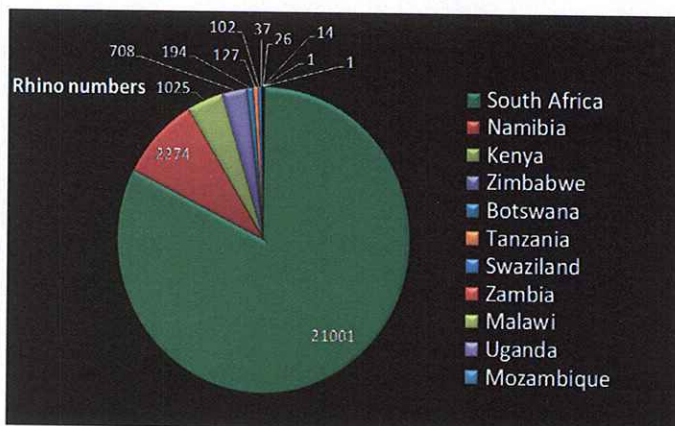


**PRESENTATION OUTLINE**

- RHINO CONSERVATION IN SOUTH AFRICA  
A CONSERVATION SUCCESS**
- THREATS TO RHINOS**
- CURRENT INTERVENTIONS**
- NEW INTERVENTIONS AND PRIORITY  
ACTIONS**



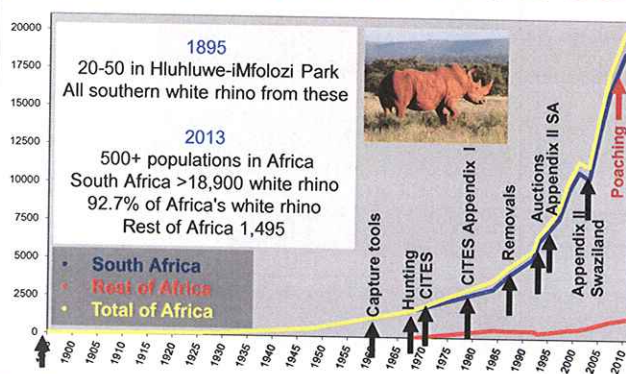
## RHINO CONSERVATION IN AFRICA



- South Africa is key
- Four range states
  - 96% of black rhinos
  - 99% of white rhinos

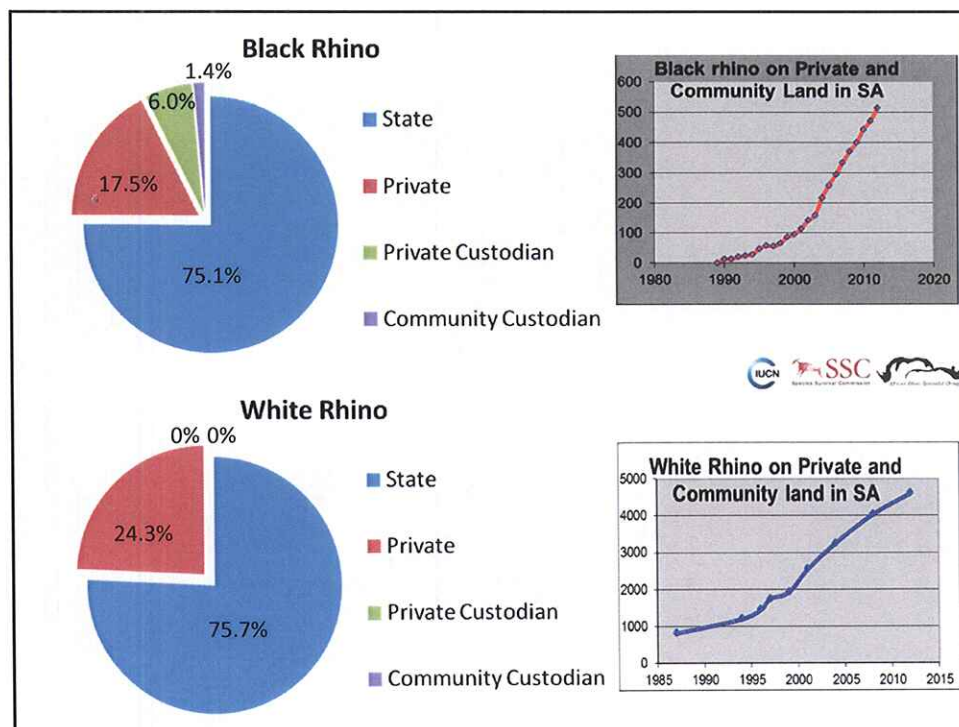
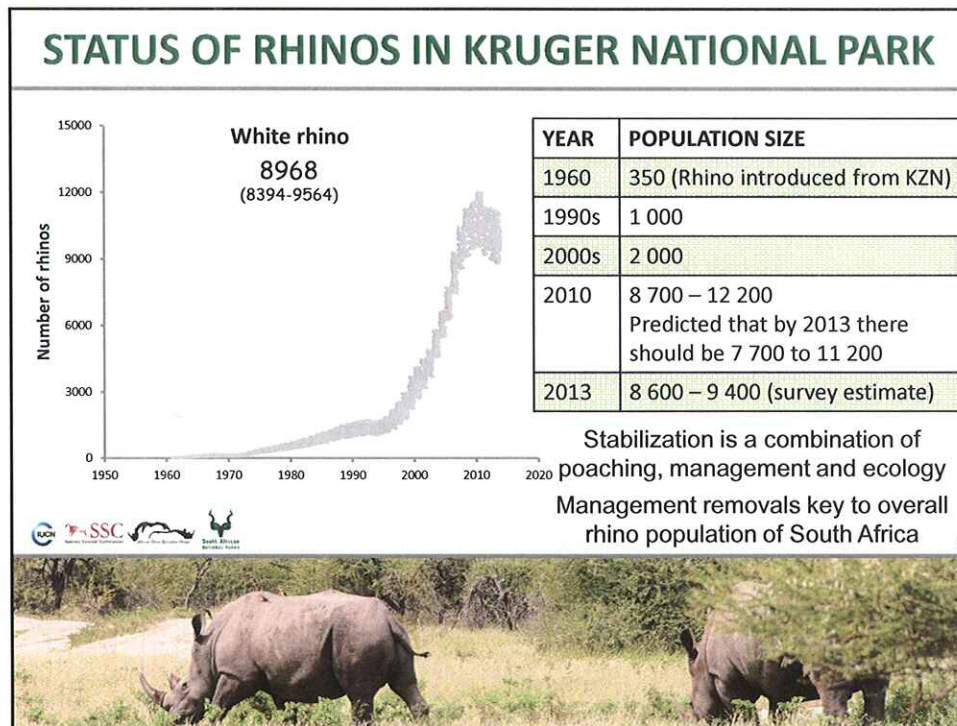


## SOUTH AFRICA'S RHINO CONSERVATION SUCCESS



Country	Number	
South Africa	18933	↑
Namibia	524	↑
Kenya	394	↑
Zimbabwe	284	↓
Botswana	185	↑
Swaziland	84	↔
Zambia	10	↑
Uganda	14	↑
Mozambique	1	↓







## RHINO CONSERVATION SUCCESS

Conservationists applied best practice management

Pioneers saw value in what they were doing

Large protected areas provided recovery

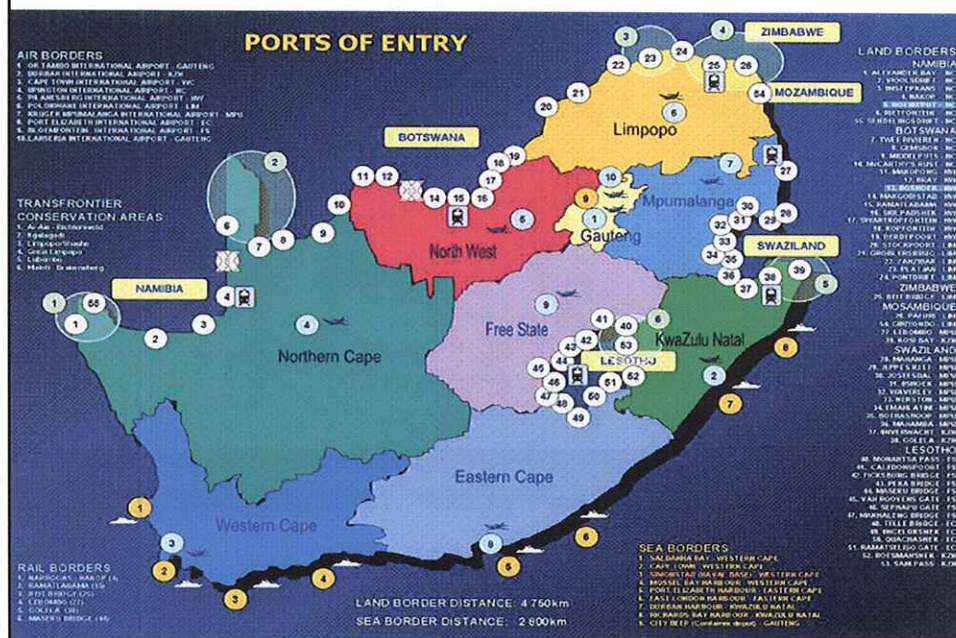
Innovative approaches provided expansion

Legal incentives provided more areas

Most values of rhinos were recognized



## PORTS: LAND, SEA AND AIRPORTS



## ARRESTS AND CONVICTIONS

### Arrests during 2014

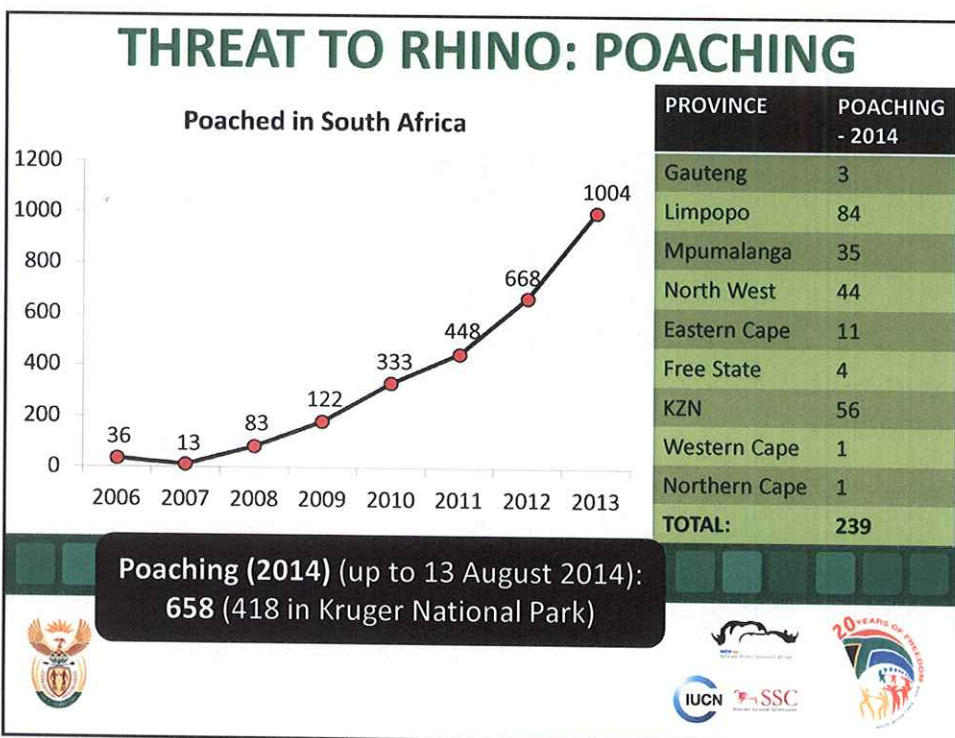
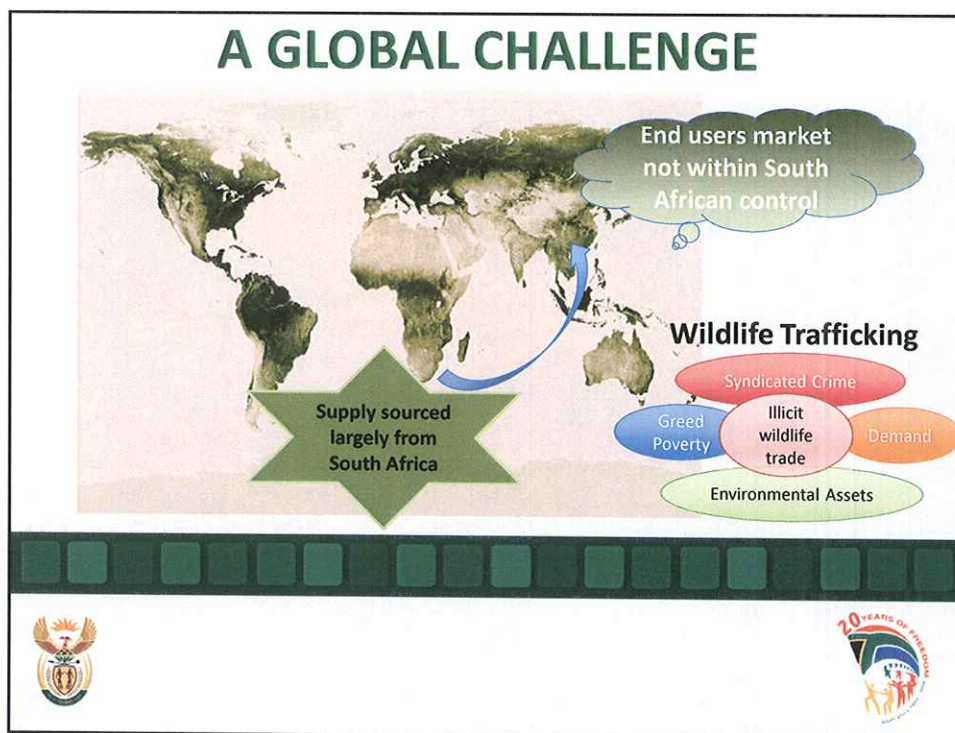
Poaching Level	KNP	MNP	GP	MP	EC	LP	NW	FS	KZN	WC	NC	ZA Totals	Level descriptions
Level 1	76	0	6	21	0	38	11	0	46	0	0	198	Poacher
Level 2	0	0	0	0	0	0	0	0	0	0	0	0	Receiver / Courier
Level 3	0	0	0	0	0	0	0	0	0	0	0	0	Courier / Buyer
Level 4	0	0	0	0	0	0	0	0	0	0	0	0	Exporter
Level 5	0	0	0	0	0	0	0	0	0	0	0	0	Buyer / Driver
Total Arrests	76	0	6	21	0	38	11	0	46	0	0	198	

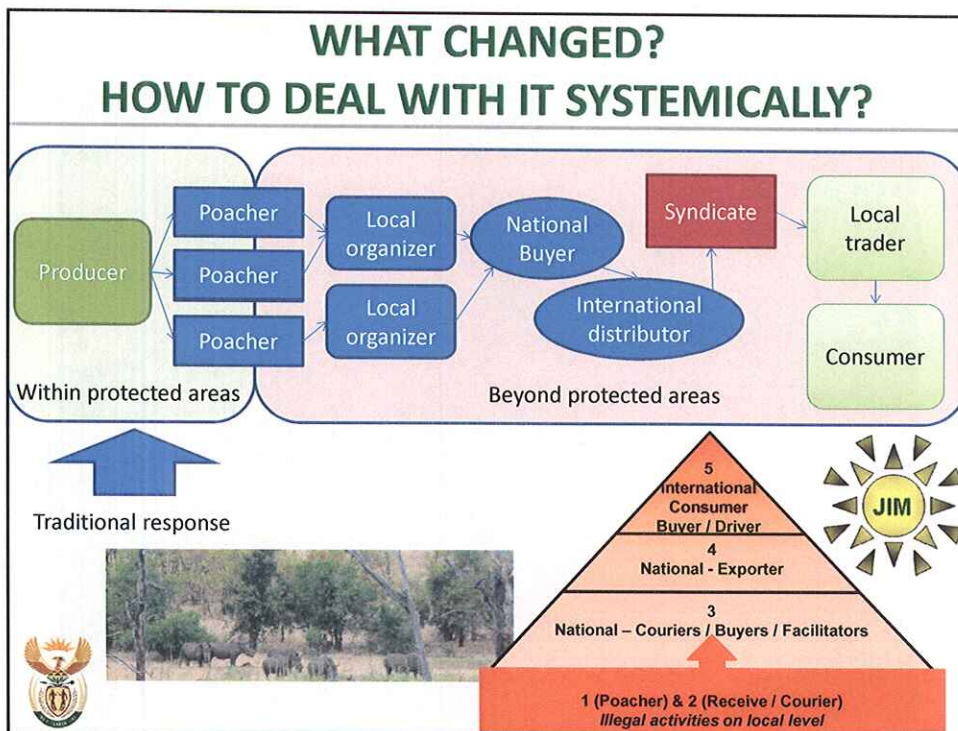
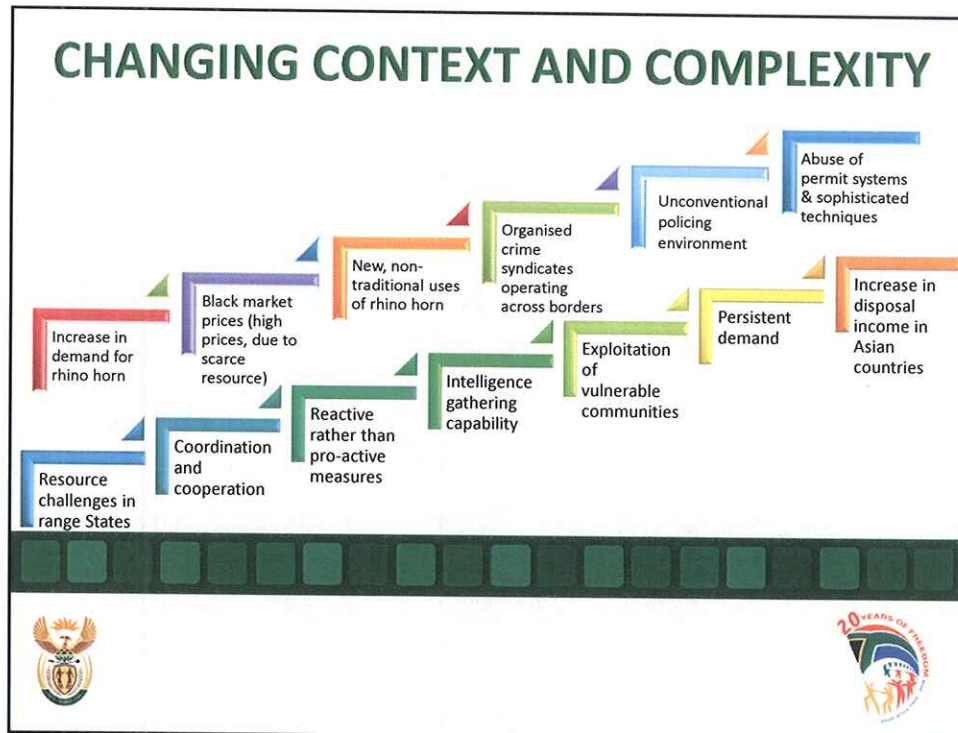
## Convictions

	2011/12	2012/13	2013/14
CASES	29	52	70
ACCUSED	48	102	140
CONVICTED	26	70	85
PERCENTAGE	54%	69%	61%
FOREIGN NATIONALS	6 Vietnamese 2 Mozambicans 1 Thai	4 Vietnamese 18 Mozambican 3 Chinese 1 Thai 1 Malawian 1 Zimbabwean	3 Vietnamese 20 Mozambican 2 Zimbabwean 1 Congolese

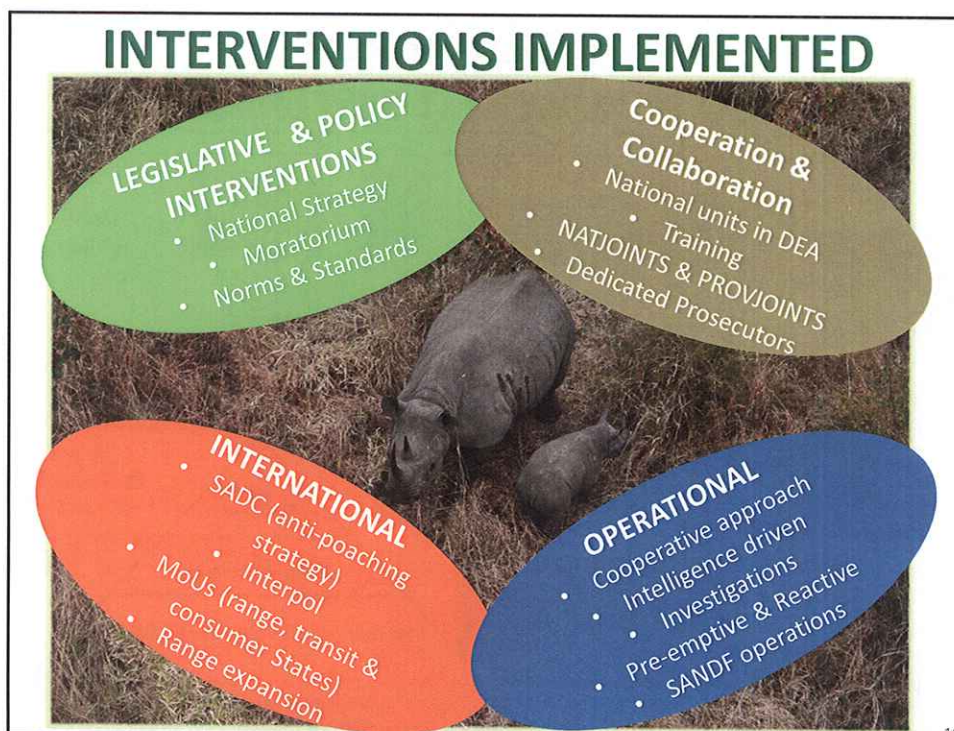














SAPS Brig. takes over here

## CURRENT OPERATIONAL INTERVENTIONS

- **National and Provincial Inter-departmental Priority Committees established in 2011**

- Comprising all relevant departments and institutions ✓
- Manage all cases of wildlife crime within RSA and provinces ✓
  - **Special focus on rhino poaching** ✓
- Specialised inter-departmental investigative responses to cases ✓
- Interaction with game parks and private owners ✓
- Regular meetings ✓
- Reporting to NATJOINTS and PROVJOINTS ✓

emphasis that country has a whole was  
looked at not just provinces

- **Interventions**

- Operations undertaken in KNP on numerous occasions ✓
- Focus area due to prevalence of incidents ✓
- Intelligence-driven and pre-emptive operations took place in KNP and other locations nationally since 2011 ✓



## CURRENT OPERATIONAL INTERVENTIONS (II)

- **Border Security**

- All ports of entry alerted to <sup>the</sup> modus operandi of smugglers of commodities, including rhino horn ✓ 1 training at border ports now
- Specialised canine searching capabilities deployed at key ports
- Border patrols implemented to conduct crime prevention operations
  - SANDF Operations including Corona (Ops Rhino and Ops Horizon terminated)

- **Challenges in environment** <sup>not a normal policing environment</sup>

- Extremely difficult crime to police ✓
- Intelligence/information challenging ✓
- Foreign nationals/syndicates heavily involved ✓ seen between levels 5 + 17 usually located overseas
- Extremely costly to police successfully

Size: Scope: Communications: Air cover: Border control (transfrontier parks)

- **Improvement in relations with local role players underway**

- Industry organisations
- Individual parties and entities

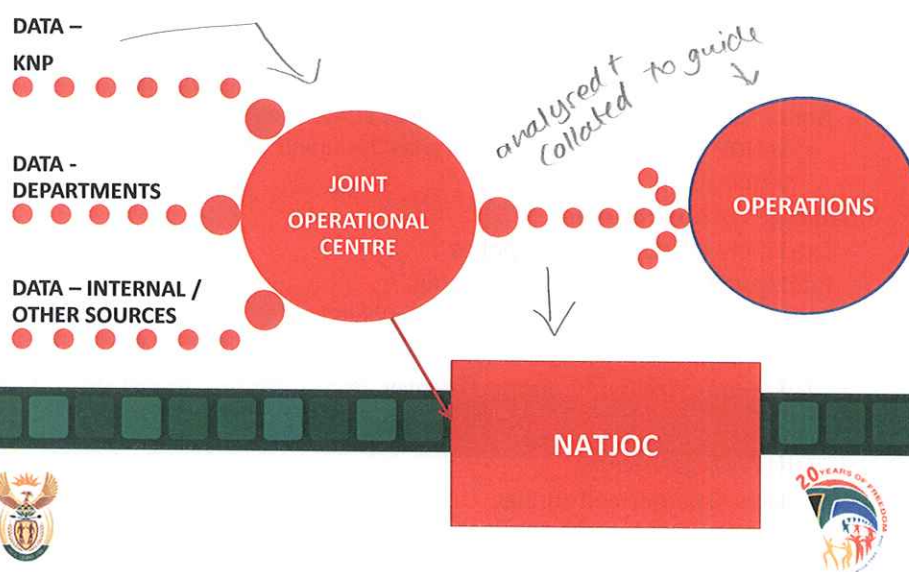


## FUTURE OPERATIONAL INTERVENTIONS

- **Mitigation of current challenges** ✓
  - KNP is still centre of majority of rhino poaching in South Africa
- **Focus on KNP**
  - Entire game park
- **Joint Operational Centre to be re-established at KNP with immediate effect with intention of:**
  - Coordination of operations
  - Centralisation of information
  - Verification of intelligence *main focus in this fight/combating the surge*
  - Proactive and reactive measures
  - Crime scene management
  - Tracing and arresting of suspects ✓
  - Dedicated investigations team ✓ *within/outside KNP*



## OPERATIONAL CONCEPT





## FUTURE OPERATIONAL INTERVENTIONS

- **Reintroduction of operational principles**

- Joint operations ↴
- Intelligence-driven operations ✓
- Way-lay operations *throughout park*
- Hot pursuit within RSA ✓

- **Deployment of joint resources**

- **Dedicated investigations**

- Including crime scene and forensics
- Case linkages

- **Dedicated prosecutions**

- Senior State Advocates



## FUTURE OPERATIONAL INTERVENTIONS

- **KNP JOC to report directly to NATJOC**

- Daily sitreps and incident reporting

- **National command and control of operation in KNP**

- **Immediate capacity to intercept poachers in KNP**

- **Enhanced investigative approach with focus on upper levels of syndicates**

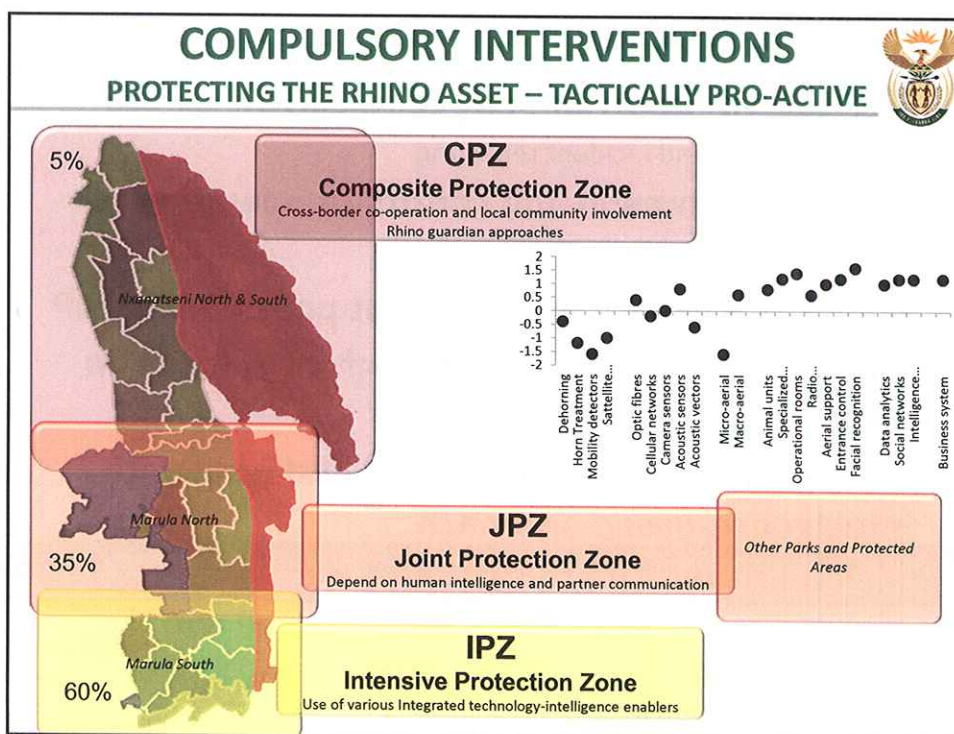
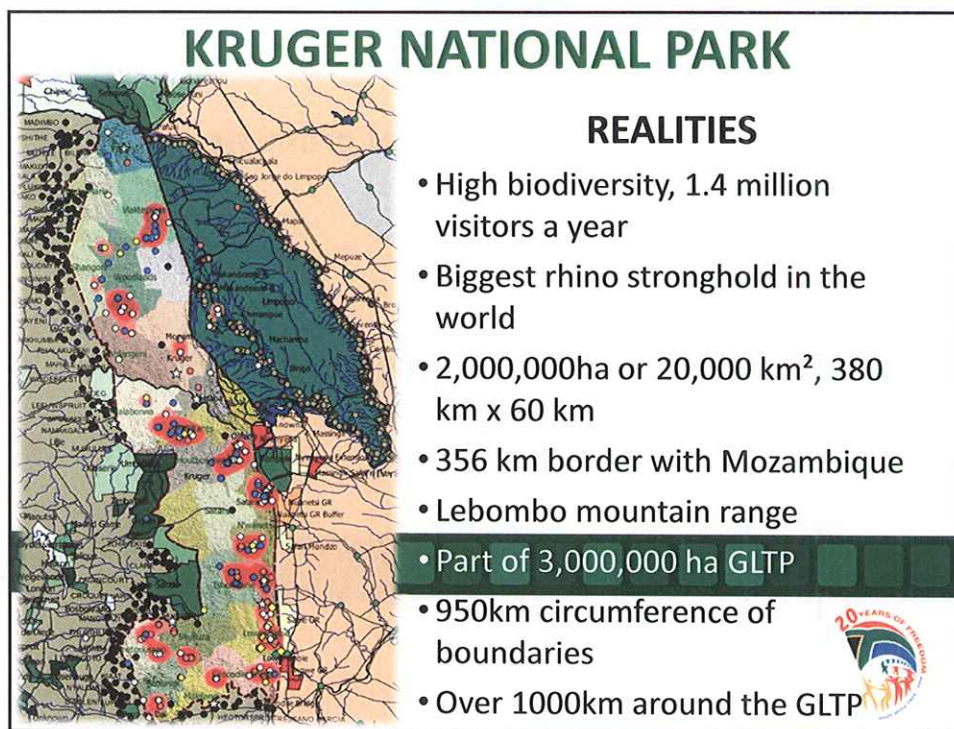
- **Immediate interventions on ground level with intelligence-based approach**

- **Resource allocations to be intensified**



- Budget
- Personnel
- Other resources





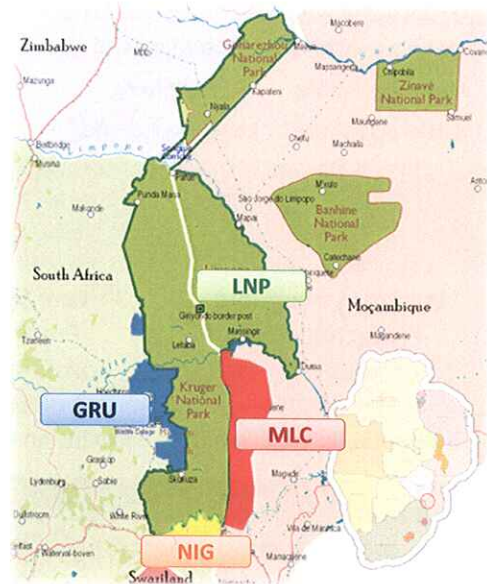


## CLEANING A PARK FROM THE OUTSIDE

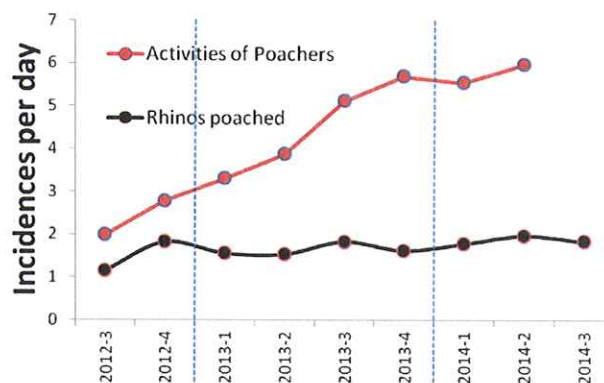
### The KNP is Surrounded by Potential Strategic Partners

- Urban & Rural Communities
- Private & Provincial Reserves
- Hotels, Lodges & Resorts
- Informal Settlements
- Farms & Businesses

### KNP CAN ONLY BE CLEARED FROM THE OUTSIDE



## Are we making a difference?



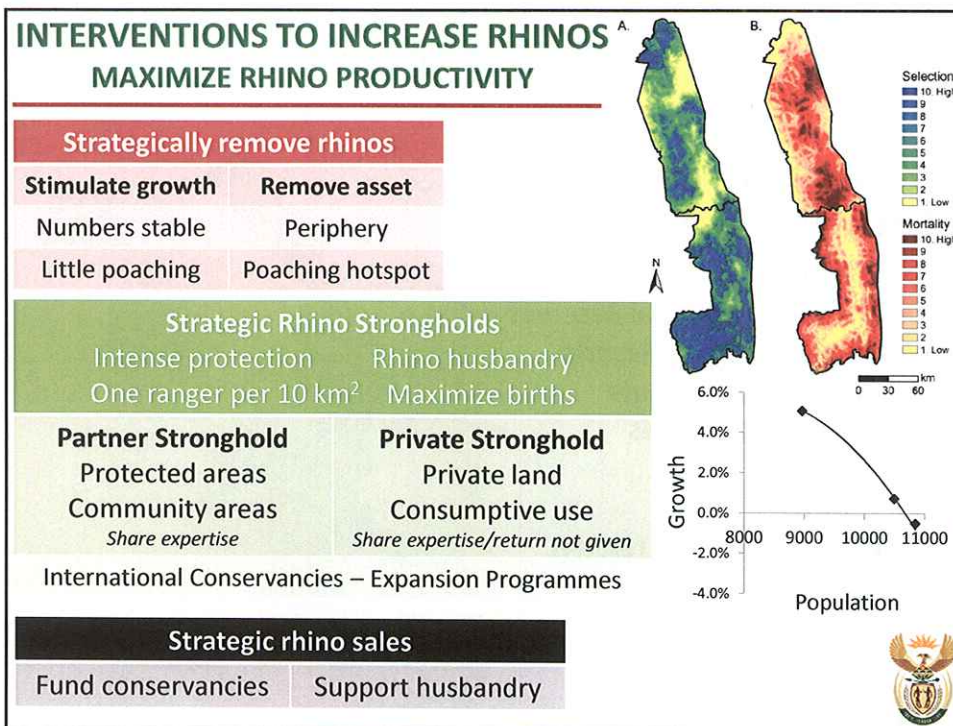
important slide  
what was  
achieved by  
ranger core  
by need for integrated  
approach as  
Min said



Illicit trade

next SAPs official takes over

stressed function & used for many decades beginning in KZN  
 brought tool used for decades but now used effectively.  
 common conservation strategy.



remove rhino from (1) threat and (2) high density areas  
 [two-fold]

DDG: Mketini  
 takes over again

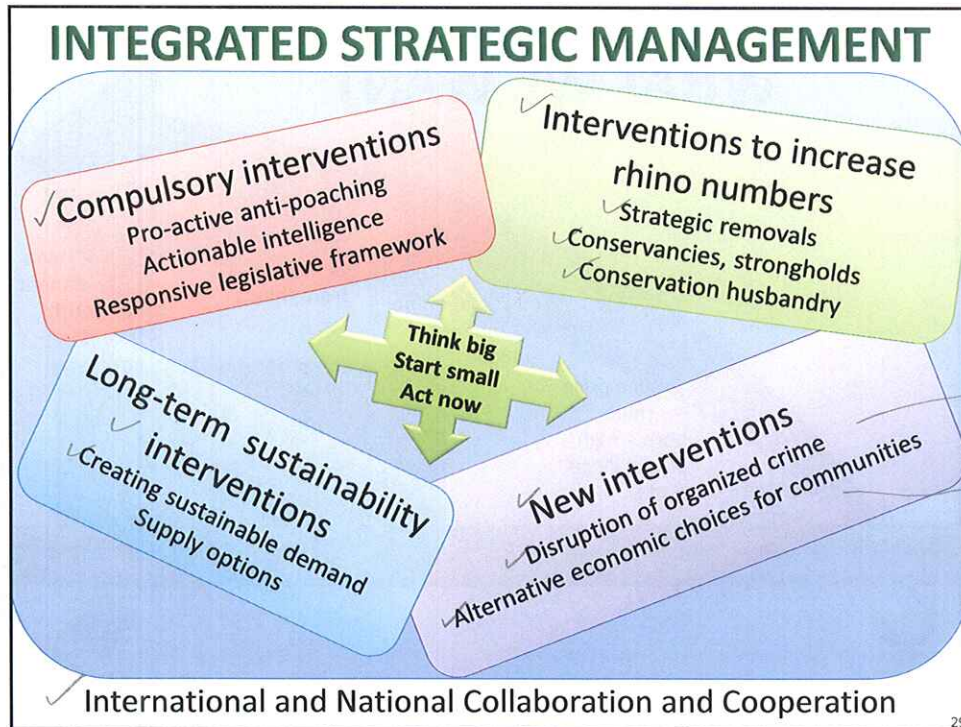
conferred dept  
 needed to work  
 more in this area

## LESSONS LEARNT

- Sound conservation and sustainable use principles key roles ✓
- Illicit wildlife trade a transnational organised crime ✓
- High level political support makes a difference ✓
- Joint and integrated efforts have more impact ✓
- Active participation of communities essential ✓
- Costs of interventions are under-estimated ✓ *needs lots of resources*
- Diversity of legislation should be used to charge offenders ✓
- Legislation should be current and relevant ✓ *Parli, to help in this area with amendments*
- Penalties should align with severity of offences ✓
- International collaboration should be strengthened ✓

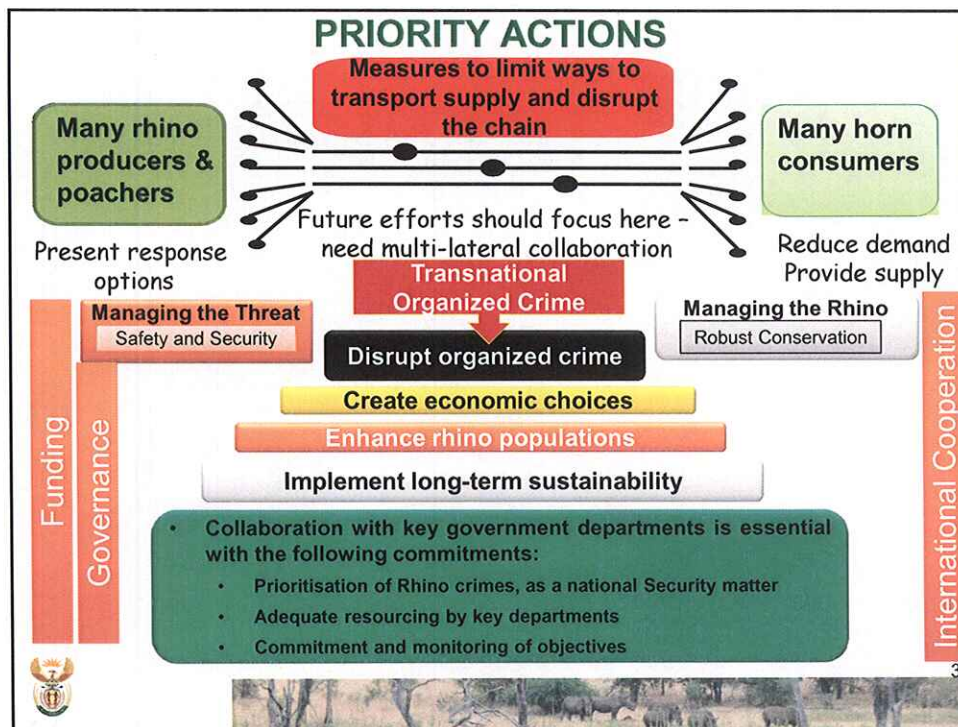






*considering possibility of horn trade in long-term*

*need to work beyond borders  
power to look at what people need*



*summary of everything discussed thus far*

