

Presentation to the Portfolio Committee on Health

26 February 2014

**In Preparation for NHI
Pilot Districts**

Dr Aaron Motsoaledi
(Minister of Health)

THE SIX (6) BUILDING BLOCKS OF A HEALTH CARE SYSTEM

According to WHO (World Health Organisation) a health care system has six (6) building blocks:

- 1. Leadership and governance;**
- 2. Access to essential medicines and other
Commodities;**
- 3. Health workforce (Human Resources)**
- 4. Health systems financing**
- 5. Health information systems**
- 6. Health service delivery**

The Ten Point Plan

1. Provision of strategic leadership and creation of a social compact for better health outcomes
2. Implementation of National Health Insurance (NHI)
3. Improving Quality of Services
4. Overhauling the health care system and improve its management
5. Improving Human Resources Management
6. Revitalization of physical infrastructure
7. Accelerated implementation of HIV and AIDS Plan and reduction of mortality due to TB and other communicable diseases
8. Mass mobilization for better health for the population
9. Review of the Drug Policy
10. Strengthening Research and Development

NDP – Health

National Health Insurance (NHI)

- A national health insurance (NHI) system needs to be implemented in phases, complemented by a reduction in the relative cost of private medical care and supported by better human capacity and systems in the public health sector.

Dr Sambo's address contd.

- WE WISH TO PROPOSE FOUR MAJOR THRUSTS FOR ATTAINING UNIVERSAL HEALTH COVERAGE:
- *First, strengthening the capacities of public health infrastructure to provide effective, safe, and quality health services. Infrastructure includes “staffing, buildings, technologies; utilities such as power and water supply; waste management; transport and communication; and FINANCING investments, maintenance and recurring costs”. Health infrastructure entails public investments and Governments will have to explore innovative ways of harnessing the resources of the private sector, NGOs and communities.*

- The World Health Organization (WHO) service availability and readiness assessment methodology provides a standard health facility assessment questionnaire to assess, map and monitor service availability and readiness (4). It is designed to support a health facility census with a focus on the core functional capacities and availability of services. The instrument can be further adapted at the country level to respond to specific country contexts. If resources are limited and do not allow for visiting all health facilities in a country (or sub-nationally in a district, region, or province), a census can be implemented in sentinel districts with additional districts added each year, to achieve a full census over a longer time period.
- The key topic areas and core functional capacities of a facility census of service availability and readiness include:
 - Identification, location and managing authority of health facility (public and private)
 - Facility infrastructure and amenities, such as availability of water supply, telecommunications and electricity
 - Basic medical equipment, such as weighing scales, thermometer and stethoscope
 - Availability of health workforce (e.g. cadre of human resources, staff training and guidelines)
 - Drugs and commodities — availability of general medicines
 - Diagnostic facilities — availability of laboratory tests (e.g. HIV, malaria, tuberculosis (TB), others)
 - Standard precautions on prevention of infections — availability of general injection and sterilization, disposal and hygiene practices
 - Specialized services, such as family planning, maternal and newborn care, child health, HIV/AIDS, tuberculosis, malaria and chronic diseases.
- Facility censuses also serve as an independent source for numbers of health workers, which may be compared with those from other sources and analysed in conjunction with them. Additional particulars, such as the presence of workers on the day of the visit, can also be gathered. Comparisons between districts and regions provide valuable evidence about the distribution of services within a country. Information on minimum standards can be used for key services to provide feedback to programme planners.

NHI PILOTING (11 Pilot Districts)

1. Infrastructure Development and Maintenance;
2. HR: Planning, Development and Management;
3. Quality of Health Services: Six Core Standards, namely
 - Cleanliness
 - Safety and Security of Staff and Patients
 - Attitude of Staff
 - Infection Control
 - Long Queues
 - Drug Stock-outs
4. Re-engineering of the Primary Healthcare System: Three streams: School Health Programme, Municipal Ward-base Primary Healthcare Agents and District Specialist Health teams
5. Contracting of GPs to work in Public Clinics

Infrastructure Optimization Tool Kit
applied for the selection of clinics to
be built in four provinces of EC, FS, LP
and MP NHI Districts

Condition Rating	Condition	Description
5	Excellent	As New - Normal Maintenance Required
4	Good	Minor Repair work and Periodical Routine Maintenance
3	Fair	Non Emergency Repair and repair to standard items
2	Poor	Major repair / replacement required prior to maintenance
1	Bad	Condemn, complete replacement required
0	Not Applicable	Not Present

Infrastructure Audit-Prioritization of Clinics for replacement, upgrading and Repairs-NHI District, Vhembe LP

NATIONAL DEPARTMENT OF HEALTH

ANALYSIS OF THE NATIONAL HEALTH AUDIT DATA TO GUIDE THE NEED FOR NEW/REPLACEMENT CLINICS

Data sorted by district, average condition of the facilities, and total space score

to select clinics that are in very poor condition for possible replacement.

1 <20	Very poor
2 20 - 40	Poor
3 40 - 60	Fair
4 60 - 80	Good
5 >80	Very good

District	Sub-District	Facility	External Walls Condition	External Water supply Condition	External Electrical Supply Condition	Electrical Condition	Ceiling Material Condition	Plumbing Toilet Condition	Plumbing Internal Water Condition	Plumbing basins Condition	Internal Walls Condition	Internal Water Supply Condition	Floor Material Condition	Waste Water Disposal Condition	Roof Material Condition	Sewerage Condition	Waiting Area Score	Space Service and Patient needs Score	Total Space Score	Average condition of facilities	Total Space Score	Weighted Population more than 5km from facility	Identified by the province
Ip Vhembe District Municipality	Ip Makhado Local Municipality	Louis Trichardt Clinic	60.0%	50.0%	50.0%	60.0%	6.0%	50.0%	0.0%	60.0%	44.0%	50.0%	50.0%	60.0%		60.0%	50.0%	100.0%	75.0%	40%	4	#N/A	
Ip Vhembe District Municipality	Ip Thulamela Local Municipality	Magwedzha Clinic	40.0%	40.0%	60.0%	60.0%	35.0%	60.0%	30.0%	60.0%	20.0%	40.0%	50.0%	60.0%	60.0%	60.0%	50.0%	100.0%	75.0%	41%	4	#N/A	
Ip Vhembe District Municipality	Ip Makhado Local Municipality	Kulani Clinic	40.0%	50.0%	60.0%	60.0%	20.0%	60.0%	58.0%	52.0%	40.0%	50.0%	60.0%	60.0%	50.0%	60.0%	100.0%	100.0%	100.0%	42%	5	#N/A	
Ip Vhembe District Municipality	Ip Mutale Local Municipality	Thengwe Clinic	46.0%	100.0%	100.0%	100.0%	20.0%	20.0%	100.0%	20.0%	58.0%	100.0%	20.0%	0.0%	68.0%	100.0%	0.0%	0.0%	0.0%	42%	1	#N/A	
Ip Vhembe District Municipality	Ip Thulamela Local Municipality	Makonde Clinic	26.0%	60.0%	60.0%	46.0%	60.0%	56.0%	60.0%	58.0%	36.0%	60.0%	56.0%	60.0%	38.0%	52.0%	50.0%	100.0%	75.0%	43%	4	#N/A	
Ip Vhembe District Municipality	Ip Thulamela Local Municipality	Sibasa Clinic	40.0%	60.0%	60.0%	40.0%	50.0%	44.0%	40.0%	44.0%	40.0%	60.0%	46.0%	60.0%	40.0%	60.0%	100.0%	100.0%	100.0%	43%	5	#N/A	
Ip Vhembe District Municipality	Ip Thulamela Local Municipality	Mulenzhe Clinic	60.0%	80.0%	80.0%	80.0%	30.0%	60.0%	40.0%	60.0%	40.0%	80.0%	60.0%	60.0%	40.0%	60.0%	50.0%	100.0%	75.0%	46%	4	#N/A	
Ip Vhembe District Municipality	Ip Makhado Local Municipality	Manavhela Clinic	52.0%	60.0%	60.0%	60.0%	50.0%	50.0%	60.0%	50.0%	52.0%	60.0%	46.0%	40.0%	32.0%	50.0%	100.0%	100.0%	100.0%	46%	5	#N/A	
Ip Vhembe District Municipality	Ip Thulamela Local Municipality	Dzingahe Clinic	56.0%	60.0%	60.0%	60.0%	56.0%	42.0%	58.0%	54.0%	54.0%	60.0%	20.0%	60.0%	56.0%	60.0%	100.0%	100.0%	100.0%	48%	5	#N/A	
Ip Vhembe District Municipality	Ip Makhado Local Municipality	Olifantshoek Clinic	60.0%	60.0%	60.0%	60.0%	58.0%	40.0%	60.0%	50.0%	58.0%	60.0%	6.0%	60.0%	60.0%	50.0%	100.0%	100.0%	100.0%	48%	5	9 384	
Ip Vhembe District Municipality	Ip Makhado Local Municipality	Kutama Clinic	50.0%	60.0%	60.0%	60.0%	50.0%	46.0%	50.0%	40.0%	50.0%	60.0%	46.0%	60.0%	50.0%	50.0%	50.0%	100.0%	75.0%	49%	4	#N/A	
Ip Vhembe District Municipality	Ip Makhado Local Municipality	Riverplaats Clinic	48.0%	60.0%	60.0%	60.0%	46.0%	58.0%	56.0%	60.0%	48.0%	60.0%	58.0%	60.0%	52.0%	28.0%	100.0%	100.0%	100.0%	50%	5	#N/A	
Ip Vhembe District Municipality	Ip Thulamela Local Municipality	Sterkstroom Clinic	33.0%	60.0%	60.0%	60.0%	52.0%	60.0%	60.0%	60.0%	56.0%	60.0%	60.0%	60.0%	58.0%	58.0%	0.0%	0.0%	0.0%	52%	1	#N/A	
Ip Vhembe District Municipality	Ip Makhado Local Municipality	Beaconsfield Clinic	58.0%	60.0%	60.0%	60.0%	60.0%	40.0%	60.0%	50.0%	58.0%	60.0%	26.0%	60.0%	60.0%	60.0%	50.0%	100.0%	75.0%	52%	4	#N/A	
Ip Vhembe District Municipality	Ip Makhado Local Municipality	Tshakhuma Clinic	48.0%	60.0%	60.0%	60.0%	54.0%	52.0%	58.0%	56.0%	52.0%	60.0%	54.0%	60.0%	54.0%	56.0%	100.0%	100.0%	100.0%	52%	5	#N/A	
Ip Vhembe District Municipality	Ip Makhado Local Municipality	Tshimupfe Clinic	48.0%	60.0%	60.0%	60.0%	48.0%	52.0%	60.0%	50.0%	54.0%	60.0%	56.0%	60.0%	58.0%	60.0%	50.0%	100.0%	75.0%	53%	4	#N/A	
Ip Vhembe District Municipality	Ip Thulamela Local Municipality	Matiyani Clinic	60.0%	56.0%	60.0%	60.0%	46.0%	56.0%	54.0%	50.0%	52.0%	56.0%	56.0%	60.0%	54.0%	50.0%	50.0%	0.0%	25.0%	54%	2	#N/A	
Ip Vhembe District Municipality	Ip Makhado Local Municipality	Matsa Clinic	50.0%	60.0%	60.0%	56.0%	60.0%	54.0%	60.0%	60.0%	52.0%	60.0%	52.0%	60.0%	54.0%	60.0%	50.0%	100.0%	75.0%	54%	4	#N/A	
Ip Vhembe District Municipality	Ip Thulamela Local Municipality	Dzwerani Clinic	60.0%	50.0%	60.0%	50.0%	54.0%	50.0%	60.0%	60.0%	60.0%	50.0%	40.0%	60.0%	56.0%	60.0%	50.0%	0.0%	25.0%	54%	2	#N/A	
Ip Vhembe District Municipality	Ip Thulamela Local Municipality	Mavambe Clinic	60.0%	60.0%	60.0%	60.0%	50.0%	56.0%	60.0%	60.0%	60.0%	60.0%	40.0%	60.0%	60.0%	60.0%	100.0%	100.0%	100.0%	54%	5	#N/A	
Ip Vhembe District Municipality	Ip Thulamela Local Municipality	Vhurivhuri Clinic	48.0%	60.0%	60.0%	60.0%	58.0%	60.0%	60.0%	60.0%	50.0%	60.0%	58.0%	60.0%	58.0%	60.0%	50.0%	100.0%	75.0%	54%	4	#N/A	
Ip Vhembe District Municipality	Ip Thulamela Local Municipality	Mhinga Clinic	60.0%	50.0%	60.0%	50.0%	37.0%	48.0%	58.0%	58.0%	58.0%	50.0%	59.0%	60.0%	58.0%	60.0%	50.0%	100.0%	75.0%	54%	4	#N/A	
Ip Vhembe District Municipality	Ip Thulamela Local Municipality	Muledane Clinic	60.0%	80.0%	80.0%	60.0%	40.0%	56.0%	80.0%	60.0%	40.0%	80.0%	74.0%	80.0%	60.0%	60.0%	50.0%	100.0%	75.0%	55%	4	#N/A	
Ip Vhembe District Municipality	Ip Makhado Local Municipality	Khomela Clinic	50.0%	60.0%	20.0%	60.0%	56.0%	50.0%	60.0%	58.0%	58.0%	60.0%	56.0%	62.0%	54.0%	40.0%	100.0%	100.0%	100.0%	55%	5	#N/A	
Ip Vhembe District Municipality	Ip Thulamela Local Municipality	Murangoni Clinic	60.0%	60.0%	60.0%	60.0%	35.0%	50.0%	60.0%	60.0%	60.0%	60.0%	60.0%	20.0%	60.0%	20.0%	0.0%	0.0%	0.0%	55%	1	#N/A	
Ip Vhembe District Municipality	Ip Thulamela Local Municipality	Ngezizimani Clinic	60.0%	60.0%	60.0%	60.0%	60.0%	60.0%	40.0%	60.0%	60.0%	60.0%	35.0%	60.0%	60.0%	60.0%	100.0%	100.0%	100.0%	55%	5	#N/A	
Ip Vhembe District Municipality	Ip Thulamela Local Municipality	Sambandou Clinic	52.0%	60.0%	60.0%	60.0%	56.0%	46.0%	40.0%	60.0%	54.0%	60.0%	58.0%	60.0%	56.0%	60.0%	0.0%	0.0%	0.0%	55%	1	#N/A	
Ip Vhembe District Municipality	Ip Thulamela Local Municipality	Lambani Clinic	52.0%	60.0%	60.0%	60.0%	58.0%	40.0%	58.0%	50.0%	54.0%	60.0%	54.0%	60.0%	58.0%	60.0%	50.0%	0.0%	25.0%	55%	2	1 248 600	
Ip Vhembe District Municipality	Ip Makhado Local Municipality	Valdezia Clinic	50.0%	60.0%	60.0%	60.0%	54.0%	60.0%	60.0%	60.0%	58.0%	60.0%	60.0%	60.0%	54.0%	60.0%	100.0%	100.0%	100.0%	55%	5	#N/A	
Ip Vhembe District Municipality	Ip Thulamela Local Municipality	Tshifudi Clinic	60.0%	60.0%	60.0%	60.0%	67.0%	54.0%	60.0%	60.0%	60.0%	60.0%	30.0%	60.0%	60.0%	60.0%	0.0%	0.0%	0.0%	55%	1	#N/A	
Ip Vhembe District Municipality	Ip Makhado Local Municipality	Vuvha Clinic	52.0%	60.0%	58.0%	60.0%	54.0%	52.0%	58.0%	57.0%	54.0%	60.0%	60.0%	60.0%	58.0%	57.0%	50.0%	100.0%	75.0%	56%	4	#N/A	
Ip Vhembe District Municipality	Ip Thulamela Local Municipality	Mukula Clinic	60.0%	60.0%	60.0%	60.0%	58.0%	60.0%	40.0%	60.0%	40.0%	60.0%	60.0%	60.0%	60.0%	60.0%	0.0%	0.0%	0.0%	56%	1	#N/A	
Ip Vhembe District Municipality	Ip Thulamela Local Municipality	Nthlaveni C Clinic	55.0%	60.0%	60.0%	52.0%	54.0%	58.0%	57.0%	60.0%	56.0%	60.0%	58.0%	60.0%	56.0%	60.0%	50.0%	0.0%	25.0%	56%	2	#N/A	
Ip Vhembe District Municipality	Ip Thulamela Local Municipality	Tshisaulo Clinic	60.0%	80.0%	80.0%	80.0%	60.0%	56.0%	40.0%	40.0%	60.0%	80.0%	40.0%	80.0%	60.0%	80.0%	0.0%	0.0%	0.0%	56%	1	#N/A	

Infrastructure Audit-Prioritization of Clinics for replacement, upgrading and Repairs-NHI District, Gert Sibande, MP

NATIONAL DEPARTMENT OF HEALTH

ANALYSIS OF THE NATIONAL HEALTH AUDIT DATA TO GUIDE THE NEED FOR NEW/REPLACEMENT CLINICS

Data sorted by district, average condition of the facilities, and total space score

to select clinics that are in very poor condition for possible replacement.

1 <20 Very poor
2 20 - 40 Poor
3 40 - 60 Fair
4 60 - 80 Good
5 >80 Very good

1- AVERAGE
CONDITION OF
THE FACILITY
2- TOTAL
SPACE
SCORE
3- WEIGHTED
POPULATION
MORE THAN 5KM
FROM THE
FACILITY

District	Sub-District	Facility	External Walls Condition	External Water supply Condition	External Electrical Supply Condition	Electrical Condition	Ceiling Material Condition	Plumbing Toilet Condition	Plumbing Internal Water Condition	Plumbing basins Condition	Internal Walls Condition	Internal Water Supply Condition	Floor Material Condition	Waste Water Disposal Condition	Roof Material Condition	Sewerage Condition	Waiting Area Score	Space Service and Patient needs Score	Total Space Score	Average condition of facilities	Total Space Score	Weighted Population more than 5km from facility	Identified by the province
mp Gert Sibande District	mp Govan Mbeki Local	Langverwacht Clinic	0.0%	20.0%	20.0%	60.0%	80.0%	20.0%	0.0%	20.0%	20.0%	20.0%	20.0%	20.0%	60.0%	20.0%	50.0%	0.0%	25.0%	36%	2	933	
mp Gert Sibande District	mp Msukaligwa Local	New Scotland Clinic	60.0%	20.0%	60.0%	20.0%	40.0%	40.0%	20.0%	60.0%	20.0%	20.0%	60.0%	40.0%	20.0%	40.0%	50.0%	0.0%	25.0%	48%	2	#N/A	
mp Gert Sibande District	mp Dipaleseng Local	Greylingstad Clinic	80.0%	60.0%	60.0%	28.0%	32.0%	28.0%	46.0%	50.0%	46.0%	60.0%	58.0%	60.0%	26.0%	80.0%	100.0%	0.0%	50.0%	48%	3	186 073	
mp Gert Sibande District	mp Govan Mbeki Local	Langverwacht Ext 14 Clinic	60.0%	60.0%	20.0%	60.0%	60.0%	20.0%	60.0%	40.0%	60.0%	60.0%	60.0%	20.0%	20.0%	20.0%	0.0%	0.0%	0.0%	52%	1	933	
mp Gert Sibande District	mp Albert Luthuli Local	Carolina Clinic	60.0%	60.0%	60.0%	40.0%	80.0%	20.0%	0.0%	20.0%	60.0%	60.0%	20.0%	60.0%	60.0%	60.0%	0.0%	0.0%	0.0%	56%	1	370 719	
mp Gert Sibande District	mp Mkhondo Local	Mkhondo Town Clinic	60.0%	0.0%	80.0%	80.0%	80.0%	60.0%	80.0%	60.0%	60.0%	0.0%	20.0%	80.0%	60.0%	80.0%	0.0%	100.0%	50.0%	56%	3	#N/A	Mkhondo
mp Gert Sibande District	mp Albert Luthuli Local	Silobela Clinic	60.0%	60.0%	80.0%	80.0%	80.0%	20.0%	20.0%	40.0%	60.0%	60.0%	60.0%	40.0%	20.0%	20.0%	0.0%	0.0%	0.0%	56%	5	0	
mp Gert Sibande District	mp Pixley Ka Seme Local	Ezamokuhle Clinic	0.0%	80.0%	80.0%	80.0%	70.0%	80.0%	100.0%	80.0%	70.0%	80.0%	80.0%	70.0%	70.0%	80.0%	0.0%	0.0%	0.0%	58%	1	2 274	
mp Gert Sibande District	mp Albert Luthuli Local	Fernie 1 Clinic	46.0%	76.0%	76.0%	76.0%	68.0%	62.0%	80.0%	60.0%	58.0%	76.0%	64.0%	70.0%	60.0%	60.0%	50.0%	0.0%	25.0%	59%	2	0	
mp Gert Sibande District	mp Mkhondo Local	Driefontein Old Stands Clinic	52.0%	60.0%	70.0%	70.0%	76.0%	46.0%	60.0%	78.0%	54.0%	60.0%	70.0%	0.0%	56.0%	60.0%	50.0%	100.0%	75.0%	62%	4	48 534	
mp Gert Sibande District	mp Albert Luthuli Local	Diepdale Clinic	44.0%	80.0%	80.0%	80.0%	50.0%	76.0%	80.0%	60.0%	64.0%	80.0%	74.0%	80.0%	80.0%	80.0%	0.0%	100.0%	50.0%	62%	3	0	
mp Gert Sibande District	mp Albert Luthuli Local	Betty'sgoed Clinic	72.0%	80.0%	80.0%	72.0%	66.0%	68.0%	80.0%	80.0%	60.0%	80.0%	60.0%	80.0%	60.0%	80.0%	0.0%	100.0%	50.0%	64%	3	0	
mp Gert Sibande District	mp Albert Luthuli Local	Glenmore Clinic	58.0%	80.0%	80.0%	78.0%	76.0%	76.0%	68.0%	70.0%	60.0%	80.0%	72.0%	70.0%	60.0%	80.0%	0.0%	0.0%	0.0%	65%	1	11 458	
mp Gert Sibande District	mp Msukaligwa Local	Kwazanele Clinic	60.0%	60.0%	80.0%	66.0%	66.0%	74.0%	60.0%	80.0%	60.0%	60.0%	60.0%	60.0%	80.0%	60.0%	100.0%	100.0%	100.0%	65%	5	0	
mp Gert Sibande District	mp Govan Mbeki Local	Emzinoni Clinic	79.0%	80.0%	78.0%	51.0%	62.0%	76.0%	80.0%	37.0%	74.0%	80.0%	80.0%	78.0%	40.0%	80.0%	50.0%	0.0%	25.0%	68%	2	94 429	Nhlazatshe 6
mp Gert Sibande District	mp Albert Luthuli Local	Nhlazatshe 6 Clinic	60.0%	76.0%	80.0%	68.0%	80.0%	60.0%	80.0%	80.0%	60.0%	76.0%	58.0%	80.0%	80.0%	40.0%	50.0%	0.0%	25.0%	68%	2	0	
mp Gert Sibande District	mp Mkhondo Local	Derby/Rustplaas Clinic	40.0%	80.0%	80.0%	60.0%	80.0%	20.0%	0.0%	80.0%	60.0%	80.0%	80.0%	20.0%	80.0%	20.0%	0.0%	100.0%	50.0%	68%	3	#N/A	
mp Gert Sibande District	mp Albert Luthuli Local	Tjakastad Clinic	80.0%	0.0%	60.0%	60.0%	80.0%	60.0%	80.0%	0.0%	80.0%	0.0%	60.0%	80.0%	40.0%	80.0%	50.0%	0.0%	25.0%	68%	2	0	
mp Gert Sibande District	mp Albert Luthuli Local	Avontuur Satellite Clinic	68.0%	20.0%	40.0%	40.0%	68.0%	60.0%	0.0%	60.0%	76.0%	20.0%	60.0%	40.0%	68.0%	40.0%	50.0%	100.0%	75.0%	68%	4	#N/A	
mp Gert Sibande District	mp Albert Luthuli Local	Fernie 2 Clinic	80.0%	80.0%	80.0%	70.0%	44.0%	68.0%	80.0%	64.0%	60.0%	80.0%	78.0%	76.0%	80.0%	60.0%	50.0%	100.0%	75.0%	68%	4	0	
mp Gert Sibande District	mp Albert Luthuli Local	Swallowsnest Clinic	60.0%	80.0%	60.0%	80.0%	80.0%	70.0%	80.0%	70.0%	60.0%	80.0%	74.0%	80.0%	70.0%	80.0%	100.0%	100.0%	100.0%	69%	5	0	
mp Gert Sibande District	mp Msukaligwa Local	Thussville/MN Cindi Clinic	80.0%	80.0%	80.0%	61.0%	74.0%	74.0%	80.0%	80.0%	70.0%	80.0%	76.0%	80.0%	46.0%	80.0%	0.0%	0.0%	0.0%	69%	1	#N/A	
mp Gert Sibande District	mp Msukaligwa Local	Chrissiesmeer/Kwachibikhulu	80.0%	80.0%	80.0%	60.0%	80.0%	80.0%	80.0%	80.0%	60.0%	80.0%	88.0%	80.0%	40.0%	80.0%	50.0%	100.0%	75.0%	70%	4	0	
mp Gert Sibande District	mp Msukaligwa Local	Davel Clinic	74.0%	80.0%	80.0%	76.0%	80.0%	80.0%	80.0%	80.0%	60.0%	80.0%	60.0%	60.0%	76.0%	60.0%	100.0%	100.0%	100.0%	70%	5	#N/A	
mp Gert Sibande District	mp Albert Luthuli Local	Arnhemburg Clinic	80.0%	80.0%	80.0%	80.0%	68.0%	68.0%	74.0%	80.0%	56.0%	80.0%	68.0%	80.0%	80.0%	80.0%	100.0%	100.0%	100.0%	70%	5	0	
mp Gert Sibande District	mp Albert Luthuli Local	Hartebeeskop Clinic	80.0%	80.0%	76.0%	68.0%	68.0%	60.0%	60.0%	70.0%	78.0%	80.0%	70.0%	80.0%	60.0%	80.0%	37.5%	100.0%	68.8%	71%	4	27 229	
mp Gert Sibande District	mp Lekwa Local Municipality	Morgenzon Clinic	76.0%	60.0%	80.0%	80.0%	58.0%	80.0%	60.0%	80.0%	74.0%	60.0%	93.0%	60.0%	58.0%	60.0%	50.0%	100.0%	75.0%	72%	4	44 017	
mp Gert Sibande District	mp Lekwa Local Municipality	Stanwest/Azalia Clinic	100.0%	100.0%	40.0%	60.0%	40.0%	80.0%	100.0%	100.0%	60.0%	100.0%	100.0%	100.0%	60.0%	100.0%	0.0%	0.0%	0.0%	72%	1	0	
mp Gert Sibande District	mp Msukaligwa Local	Ermelo Clinic	60.0%	80.0%	60.0%	60.0%	80.0%	20.0%	80.0%	60.0%	60.0%	80.0%	80.0%	80.0%	80.0%	80.0%	100.0%	100.0%	100.0%	72%	5	920 609	
mp Gert Sibande District	mp Pixley Ka Seme Local	Wakkerstroom Clinic	78.0%	80.0%	80.0%	80.0%	77.0%	70.0%	79.0%	70.0%	72.0%	80.0%	58.0%	80.0%	78.0%	80.0%	50.0%	0.0%	25.0%	73%	2	0	
mp Gert Sibande District	mp Mkhondo Local	Dirkiesdorp Clinic	60.0%	80.0%	80.0%	80.0%	76.0%	70.0%	80.0%	80.0%	78.0%	80.0%	78.0%	40.0%	80.0%	40.0%	0.0%	0.0%	0.0%	74%	1	96 297	
mp Gert Sibande District	mp Albert Luthuli Local	Nhlazatshe Clinic	80.0%	80.0%	80.0%	80.0%	68.0%	80.0%	80.0%	80.0%	80.0%	80.0%	80.0%	66.0%	80.0%	66.0%	50.0%	100.0%	75.0%	75%	4	94 429	
mp Gert Sibande District	mp Albert Luthuli Local	Mooiplaas Clinic	78.0%	78.0%	80.0%	74.0%	79.0%	70.0%	60.0%	68.0%	76.0%	78.0%	76.0%	72.0%	70.0%	72.0%	50.0%	100.0%	75.0%	76%	4	0	
mp Gert Sibande District	mp Msukaligwa Local	Emthonjeni Clinic (Msukaligwa)	80.0%	100.0%	60.0%	40.0%	80.0%	20.0%	80.0%	40.0%	80.0%	100.0%	60.0%	80.0%	80.0%	20.0%	50.0%	0.0%	25.0%	76%	2	#N/A	Emthonjeni

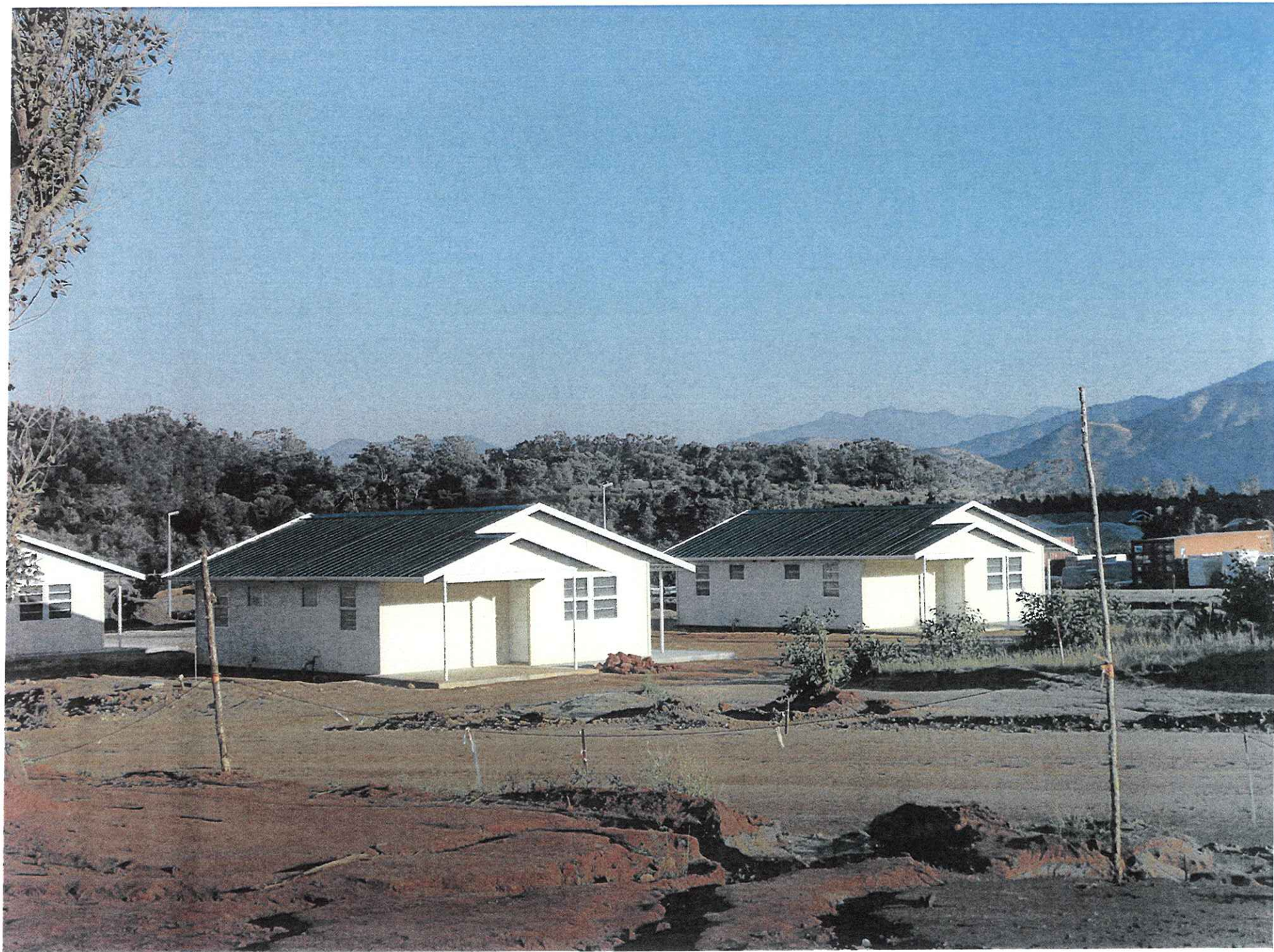
Infrastructure Audit-Prioritization of Clinics for replacement, upgrading and Repairs-NHI District, Thabo Mofutsanyane, FS

NATIONAL DEPARTMENT OF HEALTH ANALYSIS OF THE NATIONAL HEALTH AUDIT DATA TO GUIDE THE NEED FOR NEW/REPLACE Data sorted by district, average condition of the facilities, and to select clinics that are in very poor condition for possible re																	2 - TOTAL SPACE SCORE			1- AVERAGE CONDITION OF THE FACILITY	3- WEIGHTED POPULATION MORE THAN 5KM FROM THE FACILITY		
			1-20	20-40	40-60	60-80	80-100										Space						
District	Sub-District	Facility	External Walls Condition	External Water supply Condition	External Electrical Supply Condition	Electrical Condition	Ceiling Material Condition	Plumbing Toilet Condition	Plumbing Internal Water Condition	Plumbing basins Condition	Internal Walls Condition	Internal Water Supply Condition	Floor Material Condition	Waste Water Disposal Condition	Roof Material Condition	Sewerage Condition	Waiting Area Score	Space Service and Patient needs Score	Total Space Score	Average condition of facilities	Total Space Score	Weighted Population more than 5km from facility	Identified by the province
fs Thabo Mofutsanyane District Municipality	fs Mantsopa Local Municipality	Excelsior Clinic	80.0%	80.0%	80.0%	80.0%	72.0%	60.0%	60.0%	60.0%	60.0%	60.0%	60.0%	60.0%	60.0%	76.0%	100.0%	100.0%	100.0%	54%	3	55 279	
fs Thabo Mofutsanyane District Municipality	fs Maluti a Phofung Local Municipality	Bolata Clinic	60.0%	80.0%		80.0%	60.0%	60.0%		60.0%	60.0%	60.0%	60.0%	60.0%	60.0%	60.0%	50.0%	0.0%	25.0%	55%	2	0	
fs Thabo Mofutsanyane District Municipality	fs Setsoto Local Municipality	Matwabeng Clinic	60.0%	80.0%		60.0%	56.0%	60.0%		28.0%	60.0%	60.0%	44.0%	60.0%	68.0%	60.0%	50.0%	100.0%	75.0%	58%	4	0	
fs Thabo Mofutsanyane District Municipality	fs Setsoto Local Municipality	Kokelong Clinic	80.0%	80.0%		60.0%	56.0%	60.0%		60.0%	60.0%	60.0%	60.0%	60.0%	62.0%	60.0%	100.0%	100.0%	100.0%	62%	3	0	
fs Thabo Mofutsanyane District Municipality	fs Mantsopa Local Municipality	Borwa Clinic	80.0%	60.0%	80.0%	60.0%	60.0%	50.0%	70.0%	60.0%	60.0%	60.0%	60.0%	60.0%	60.0%	60.0%	50.0%	100.0%	75.0%	62%	4	0	
fs Thabo Mofutsanyane District Municipality	fs Mantsopa Local Municipality	Tweespruit Clinic	72.0%	80.0%	80.0%	80.0%	60.0%	68.0%	84.0%	60.0%	60.0%	60.0%	60.0%	76.0%	60.0%	60.0%	100.0%	100.0%	100.0%	66%	3	0	
fs Thabo Mofutsanyane District Municipality	fs Phumelela Local Municipality	Vrede Clinic	60.0%	80.0%		76.0%	62.0%	64.0%		60.0%	60.0%	60.0%	60.0%	60.0%	68.0%	60.0%	50.0%	0.0%	25.0%	66%	2	153 478	
fs Thabo Mofutsanyane District Municipality	fs Maluti a Phofung Local Municipality	Tebang Clinic	80.0%	60.0%		74.0%	72.0%	70.0%		60.0%	60.0%	60.0%	52.0%	70.0%	76.0%	60.0%	0.0%	0.0%	0.0%	68%	3	0	
fs Thabo Mofutsanyane District Municipality	fs Maluti a Phofung Local Municipality	Malesaona Clinic	60.0%	60.0%		60.0%	56.0%	60.0%	60.0%	50.0%	60.0%	60.0%	60.0%	60.0%	64.0%	60.0%	100.0%	100.0%	100.0%	68%	3	1 952	
fs Thabo Mofutsanyane District Municipality	fs Maluti a Phofung Local Municipality	Paballong Clinic	80.0%	60.0%		60.0%	62.0%	60.0%	60.0%	60.0%	60.0%	60.0%	60.0%	60.0%	68.0%	60.0%	100.0%	0.0%	50.0%	69%	3	0	
fs Thabo Mofutsanyane District Municipality	fs Maluti a Phofung Local Municipality	Nthabiseng Clinic	60.0%	60.0%		60.0%	68.0%	60.0%	70.0%	60.0%	60.0%	60.0%	70.0%	60.0%	74.0%	60.0%	100.0%	0.0%	50.0%	70%	3	0	
fs Thabo Mofutsanyane District Municipality	fs Maluti a Phofung Local Municipality	Thaba Bosiu Clinic	70.0%	60.0%		70.0%	70.0%	68.0%	20.0%	60.0%	76.0%	60.0%	66.0%	76.0%	72.0%	68.0%	50.0%	0.0%	25.0%	71%	2	0	
fs Thabo Mofutsanyane District Municipality	fs Mantsopa Local Municipality	Manyatseng Clinic	100.0%	80.0%	80.0%	100.0%	60.0%	60.0%	60.0%	60.0%	60.0%	60.0%	56.0%	60.0%	60.0%	100.0%	100.0%	100.0%	71%	3	0		
fs Thabo Mofutsanyane District Municipality	fs Maluti a Phofung Local Municipality	Makoane Clinic	60.0%	60.0%		60.0%	68.0%	50.0%	60.0%	60.0%	74.0%	60.0%	60.0%	70.0%	76.0%	60.0%	0.0%	0.0%	0.0%	72%	3	0	
fs Thabo Mofutsanyane District Municipality	fs Mantsopa Local Municipality	Ikaheng Clinic	80.0%	80.0%	80.0%	80.0%	58.0%	60.0%	60.0%	60.0%	60.0%	60.0%	60.0%	60.0%	76.0%	60.0%	50.0%	100.0%	75.0%	72%	4	0	
fs Thabo Mofutsanyane District Municipality	fs Maluti a Phofung Local Municipality	Intabazwe Clinic	80.0%	80.0%		60.0%	64.0%	72.0%		60.0%	60.0%	60.0%	62.0%	60.0%	72.0%	60.0%	50.0%	0.0%	25.0%	72%	2	#N/A	
fs Thabo Mofutsanyane District Municipality	fs Phumelela Local Municipality	Memel Clinic	72.0%	80.0%		74.0%	68.0%	78.0%		60.0%	72.0%	60.0%	72.0%	72.0%	76.0%	60.0%	50.0%	100.0%	75.0%	72%	4	#N/A	
fs Thabo Mofutsanyane District Municipality	fs Mantsopa Local Municipality	Hobhouse Clinic	60.0%	60.0%	60.0%	60.0%	56.0%	58.0%	74.0%	56.0%	72.0%	60.0%	60.0%	60.0%	74.0%	20.0%	0.0%	100.0%	50.0%	72%	3	0	
fs Thabo Mofutsanyane District Municipality	fs Maluti a Phofung Local Municipality	Qholaghwhe Clinic	80.0%	80.0%		74.0%	62.0%	60.0%	60.0%	60.0%	60.0%	60.0%	68.0%	60.0%	74.0%	60.0%	50.0%	0.0%	25.0%	73%	2	0	
fs Thabo Mofutsanyane District Municipality	fs Dihlabeng Local Municipality	Relebohile (Rosendal) Clinic	62.0%	60.0%	60.0%	68.0%	74.0%	74.0%	60.0%	60.0%	74.0%	60.0%	60.0%	60.0%	74.0%	60.0%	100.0%	100.0%	100.0%	73%	3	0	
fs Thabo Mofutsanyane District Municipality	fs Maluti a Phofung Local Municipality	Namahlali Clinic	80.0%	80.0%		62.0%	70.0%	64.0%	60.0%	60.0%	60.0%	60.0%	68.0%	72.0%	74.0%	72.0%	50.0%	0.0%	25.0%	74%	2	0	
fs Thabo Mofutsanyane District Municipality	fs Maluti a Phofung Local Municipality	Boiketlo Clinic	60.0%	60.0%		50.0%	68.0%	64.0%	20.0%	60.0%	70.0%	60.0%	76.0%	60.0%	60.0%	60.0%	100.0%	0.0%	50.0%	75%	3	0	
fs Thabo Mofutsanyane District Municipality	fs Nketoana Local Municipality	Petsana Clinic	60.0%	60.0%		60.0%	68.0%	60.0%		60.0%	72.0%	60.0%	60.0%	60.0%	74.0%	60.0%	100.0%	100.0%	100.0%	75%	3	0	Petsana Clinic
fs Thabo Mofutsanyane District Municipality	fs Maluti a Phofung Local Municipality	Tina Moloi Clinic	80.0%	80.0%		72.0%	70.0%	78.0%	100.0%	60.0%	76.0%	60.0%	77.0%	100.0%	72.0%	100.0%	50.0%	100.0%	75.0%	75%	4	0	Tina Moloi Clinic
fs Thabo Mofutsanyane District Municipality	fs Dihlabeng Local Municipality	Paul Roux Clinic	60.0%	80.0%	80.0%	60.0%	60.0%	60.0%	60.0%	60.0%	76.0%	60.0%	60.0%	60.0%	60.0%	20.0%	50.0%	100.0%	75.0%	75%	4	#N/A	Paul Roux Clinic

Infrastructure Audit-Prioritization of Clinics for replacement, upgrading and Repairs-NHI District OR Tambo, EC

NATIONAL DEPARTMENT OF HEALTH ANALYSIS OF THE NATIONAL HEALTH AUDIT DATA TO GUIDE THE NEED FOR Data sorted by district, average condition of the facilities to select clinics that are in very poor condition for																	2-TOTAL SPACE SCORE			1- AVERAGE CONDITION OF THE FACILITY		3- WEIGHTED POPULATION MORE THAN 5KM FROM THE FACILITY		Identified by the province
District	Sub-District	Facility	External Walls Condition	External Water supply Condition	External Electrical Supply Condition	Electrical Condition	Ceiling Material Condition	Plumbing Toilet Condition	Plumbing Internal Water Condition	Plumbing basins Condition	Internal Walls Condition	Internal Water Supply Condition	Floor Material Condition	Waste Water Disposal Condition	Roof Material Condition	Sewerage Condition	Waiting Area Score	Space Service and Patient needs Score	Total Space Score	Average condition of facilities	Total Space Score	Weighted Population more than 5km from facility		
ec Oliver Tambo District Municipality	ec Nyandeni Health sub-District	Isilimela Gateway Clinic	20.0%	80.0%	100.0%	80.0%	20.0%	20.0%	20.0%	20.0%	20.0%	10.0%	20.0%	20.0%	20.0%	20.0%	100.0%	0.0%	50.0%	30%	3	12 426		
ec Oliver Tambo District Municipality	ec Mhlontlo Health sub-District	Nessie Knight Clinic	20.0%	20.0%	20.0%	20.0%	20.0%	20.0%	20.0%	20.0%	20.0%	20.0%	20.0%	20.0%	20.0%	20.0%	50.0%	100.0%	75.0%	30%	4	#N/A		
ec Oliver Tambo District Municipality	ec Qaukeni Health sub-District	Flagstaff Clinic	20.0%	52.0%	80.0%	40.0%	20.0%	20.0%	20.0%	74.0%	20.0%	52.0%	50.0%	20.0%	20.0%	20.0%	0.0%	0.0%	0.0%	20%	1	#N/A		
ec Oliver Tambo District Municipality	ec Nyandeni Health sub-District	Cwele Clinic	20.0%	20.0%	20.0%	20.0%		20.0%			20.0%	20.0%	50.0%			40.0%	0.0%	0.0%	0.0%	33%	1	2 152		
ec Oliver Tambo District Municipality	ec King Sabata Dalindyebo Health sub-District	Tyelelana Clinic	20.0%	0.0%	100.0%	80.0%	20.0%	80.0%	0.0%	20.0%	20.0%	0.0%	80.0%	0.0%	70.0%	0.0%	50.0%	0.0%	25.0%	34%	2	33 154		
ec Oliver Tambo District Municipality	ec Qaukeni Health sub-District	Magwa Clinic	60.0%	68.0%	72.0%	62.0%	50.0%	48.0%	56.0%	52.0%	0.0%	68.0%	56.0%	70.0%	36.0%	58.0%	100.0%	100.0%	100.0%	40%	1	49 383		
ec Oliver Tambo District Municipality	ec Mhlontlo Health sub-District	Lotana Clinic	40.0%		60.0%	40.0%	32.0%	60.0%			40.0%		44.0%			60.0%	0.0%	0.0%	0.0%	43%	1	9 410	Lotana Clinic	
ec Oliver Tambo District Municipality	ec Nyandeni Health sub-District	Bambisana PHC Clinic	40.0%	40.0%	60.0%	60.0%	40.0%	60.0%	60.0%	60.0%	40.0%	40.0%	40.0%		60.0%		0.0%	0.0%	0.0%	44%	1	6 537	Bambisana Hospital	
ec Oliver Tambo District Municipality	ec Nyandeni Health sub-District	Mtambalala Clinic	40.0%	20.0%	20.0%	20.0%	54.0%	46.0%	20.0%	72.0%	56.0%	20.0%	36.0%	46.0%	50.0%	46.0%	50.0%	0.0%	0.0%	25.0%	45%	2	3 902	
ec Oliver Tambo District Municipality	ec Mhlontlo Health sub-District	St Lucy's Clinic	40.0%	20.0%	60.0%	40.0%	48.0%	40.0%	20.0%	40.0%	44.0%	20.0%	60.0%	60.0%	46.0%	60.0%	100.0%	100.0%	100.0%	46%	5	5 068		
ec Oliver Tambo District Municipality	ec Nyandeni Health sub-District	Canzibe Gateway Clinic	20.0%	80.0%	80.0%	100.0%	60.0%	60.0%	60.0%	60.0%	20.0%	100.0%	68.0%	40.0%	72.0%	30.0%	0.0%	0.0%	0.0%	48%	1	22 484		
ec Oliver Tambo District Municipality	ec Mhlontlo Health sub-District	Sidwadweni Clinic	40.0%	80.0%	80.0%	60.0%	60.0%	40.0%	20.0%	70.0%	30.0%	80.0%	50.0%	20.0%	60.0%	20.0%	50.0%	100.0%	75.0%	50%	4	2 437		
ec Oliver Tambo District Municipality	ec Nyandeni Health sub-District	Nkanga Clinic	50.0%	40.0%	80.0%	80.0%	48.0%	40.0%	20.0%	50.0%	60.0%	40.0%	40.0%	20.0%	60.0%	20.0%	0.0%	100.0%	50.0%	52%	3	16 309	Nkanga Clinic	
ec Oliver Tambo District Municipality	ec Nyandeni Health sub-District	Bomvini Clinic	40.0%	20.0%	60.0%	60.0%	60.0%	20.0%	20.0%	20.0%	52.0%	20.0%	40.0%	20.0%	50.0%	20.0%	100.0%	100.0%	100.0%	52%	1	0		
ec Oliver Tambo District Municipality	ec Nyandeni Health sub-District	St Barnabas Gateway Clinic	60.0%	80.0%	80.0%	64.0%	50.0%	48.0%	10.0%	60.0%	60.0%	10.0%	50.0%	60.0%	50.0%	60.0%	50.0%	100.0%	75.0%	54%	4	16 848		
ec Oliver Tambo District Municipality	ec King Sabata Dalindyebo Health sub-District	Zitulele Gateway Clinic	60.0%	40.0%	20.0%	20.0%		20.0%	60.0%	60.0%	60.0%	40.0%	60.0%		40.0%		0.0%	0.0%	0.0%	55%	1	0		
ec Oliver Tambo District Municipality	ec Qaukeni Health sub-District	Malangeni Clinic	52.0%	20.0%	20.0%	20.0%	46.0%	20.0%	20.0%	60.0%	52.0%	20.0%	66.0%	20.0%	60.0%	20.0%	50.0%	0.0%	25.0%	55%	2	188 828		





District Hospital Assessments: Compilation of Report

The Work Instructions
compiled for each facility
include the following:

Building Structural: include all building structural elements i.e. roofs, doors, walls, ironmongery, etc.

Building Wet Services: items include all plumbing, drainage and sanitary related items

Electrical: includes light fittings, switches, sockets, etc.

Civil Infrastructure: external water and sewer reticulation, roads, storm water, fencing, cleaning and site keeping

Mechanical Equipment and Installations: HVAC, Steam Generation, Steam Distribution, Hot Water Generating, Kitchen Equipment and Laundry Equipment

Section A – Photo Report.

Section B – Asset Maintenance Plan

Section C – Work Instructions

Section D – Reference Photographs

Section E – Specifications

Section F – Asset Register

Section G – Schematic Layout Plans



health

Department:
Health
REPUBLIC OF SOUTH AFRICA

The Photo Report of each of the District Hospitals were compiled as an overview of the Specific Hospital:

- Structural and Building work
- Plumbing & Wet Services
- Electrical
- Fencing, Cleaning and Site Keeping
- Water- and Sewer reticulation
- Roads and Storm water
- External lighting
- Air-conditioning
- Mechanical Equipment
- Fire fighting equipment

The Asset Maintenance Plan for each facility will divided into the following:

- Scope
- Maintenance Control
- Mandatory Periodical Servicing
- Operation of Installations

Reference photographs have been included for *each* work instruction individually:

- Work Instruction
- Reference Photo
- Photo Number
- Layout Drawing
- Reference Number included on Layout Drawing

Pretoria West District Hospital



- 2 195 Sanitary and Brassware fittings.
- 5 245 Electrical fittings.
- 103 External light fittings.
- 1 572m Palisade Fencing.
- 9 120m² Asphalt Surface.
- 2 668m² Interlocking Paving.
- 58 Air-conditioning units.
- 235 Fire Fighting Equipment fittings.
- 1 Standby Generator
- 42 Mechanical Fixtures

Jubilee District Hospital

- 1 553 Sanitary and Brassware fittings.
- 3 044 Electrical fittings.
- 41 External light fittings.
- 1 258m Perimeter Fence.
- 77 740m² Site Keeping.
- 3 034m² Asphalt Surfaces.
- 558m² Interlocking Paving.
- 68 Air-conditioning units.
- Chiller Plant
- 115 Fire Fighting Equipment fittings.
- 2 Standby Generators
- 200 Mechanical Fixtures



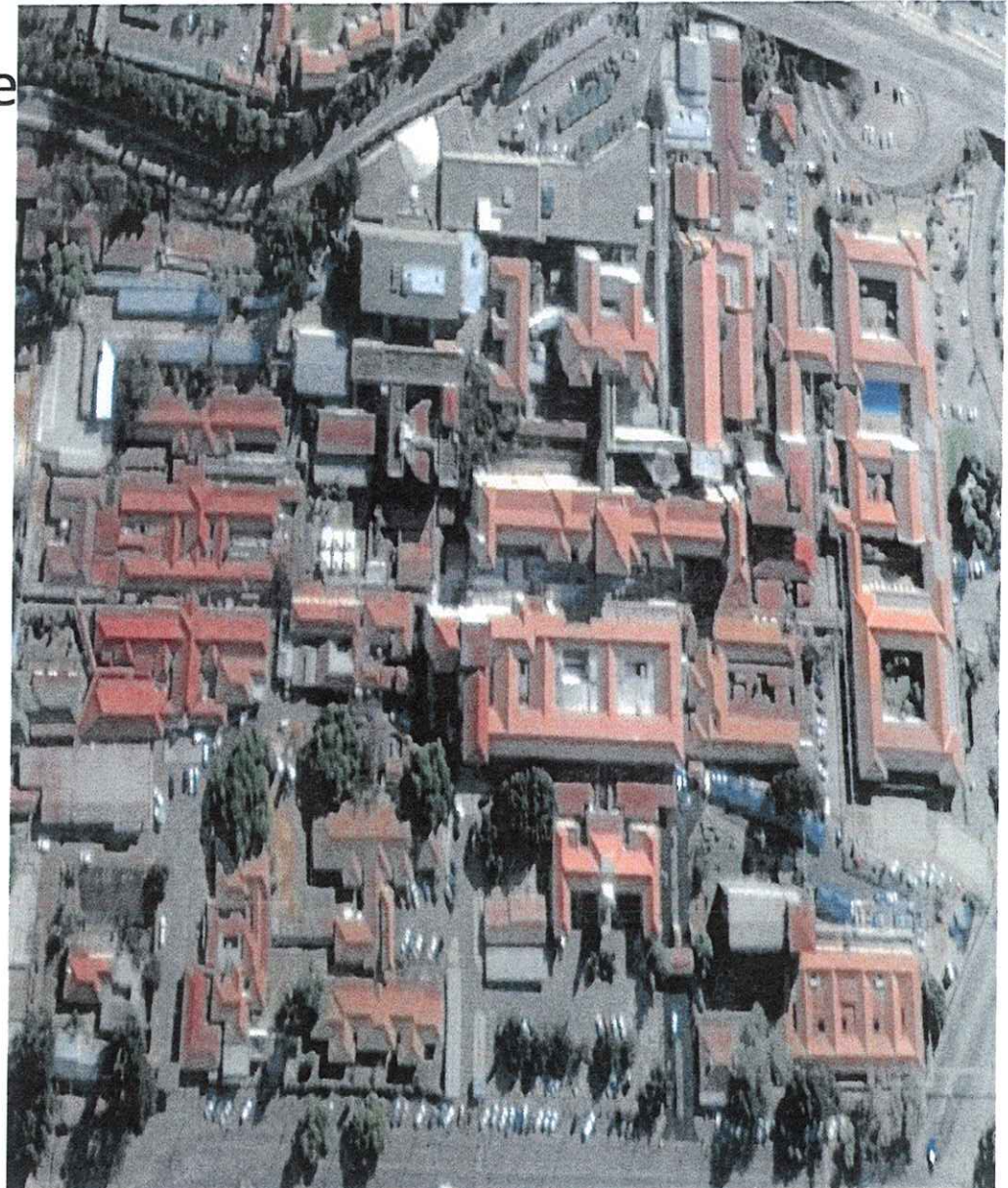
Odi District Hospital

- 1 156 Sanitary and Brassware fittings.
- 2 281 Electrical fittings.
- 24 External light fittings.
- 1 180m Perimeter Fence.
- 55 584m² Site Keeping.
- 3 360m² Asphalt Surfaces.
- 967m² Interlocking Paving.
- 53 Air-conditioning units.
- 126 Fire Fighting Equipment fittings.
- 1 Standby Generators
- 66 Mechanical Fixtures.



Tshwane District Hospital

- 1 915 Sanitary and Brassware fittings.
- 6 409 Electrical fittings.
- 150 External light fittings.
- 1 286m Perimeter Fence.
- 118 230m² Site Keeping.
- 8 274m² Asphalt Surfaces.
- 150 Air-conditioning units.
- 213 Fire Fighting Equipment fittings.
- 2 Standby Generators
- 24 Mechanical Fixtures.



Work Instructions

No	Facility	Structural	Wet Services	Electrical	Mechanical & Civil	TOTAL
TOTAL		1 914	1 261	1 048	607	4 830
1	Pretoria West District Hospital	223	222	210	160	815
2	Jubilee District Hospital	808	429	369	209	1 815
3	Odi District Hospital	545	270	180	181	1 176
4	Tshwane District Hospital	338	340	289	57	1 024



health

Department:
Health
REPUBLIC OF SOUTH AFRICA

Condition Assessments

Condition Rating	Condition	Description
5	Excellent	As New - Normal Maintenance Required
4	Good	Minor Repair work and Periodical Routine Maintenance
3	Fair	Non Emergency Repair and repair to standard items
2	Poor	Major repair / replacement required prior to maintenance
1	Bad	Condemn, complete replacement required
0	Not Applicable	Not Present



health

Department:
Health
REPUBLIC OF SOUTH AFRICA

Condition Assessments

Discipline	Pretoria West	Jubilee	Odi	Tshwane
Structural and Building: External	4	1	4	3
Structural and Building: Internal	3	2	4	3
Plumbing & Wet Services	2	2	3	3
Electrical - Building	2	2	3	4
Electrical - External Lighting	3	3	3	3
Water Reticulation	4	1	3	3
Sewer Reticulation	3	1	4	4
Roads & Stormwater	2	2	4	4
Standby Power	4	3	3	3
Air Conditioning / HVAC	4	2	3	3
Steam Generation	4	2	3	0
Steam Distribution	3	2	4	3
Hot water Generation	2	1	3	3
Kitchen Equipment	3	3	4	3
Laundry Equipment	3	1	3	0
Fire Fighting Equipment	3	3	2	3
Average Rating	3.1	1.9	3.3	3.2



health

Department:
Health
REPUBLIC OF SOUTH AFRICA

Conclusion and Recommendations

	Pretoria West	Jubilee	Odi	Tshwane
Average Rating	3.1	1.9	3.3	3.2

END