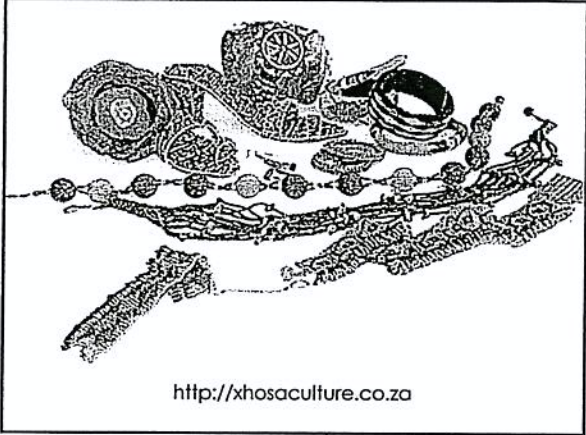
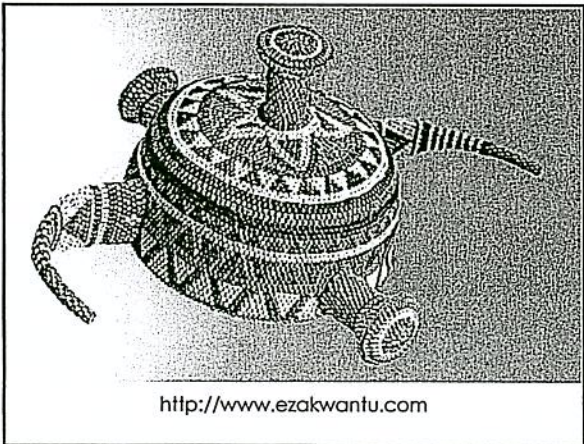
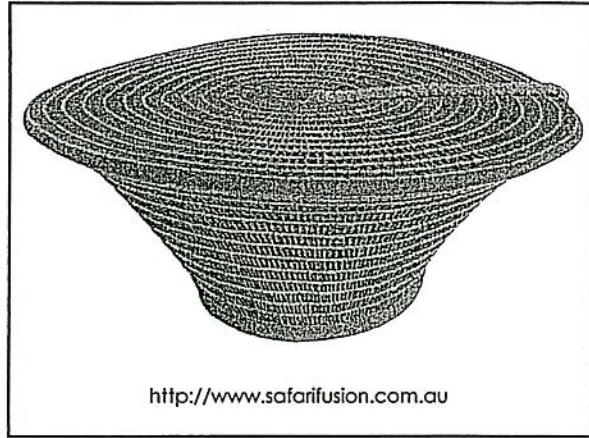
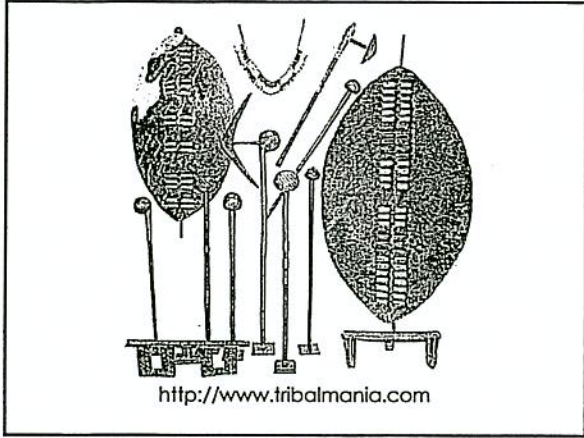


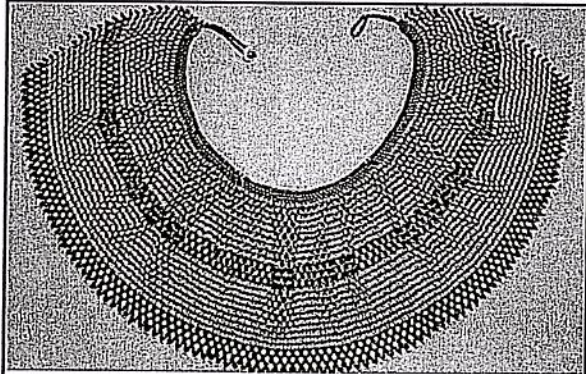
PROTECTABLE DESIGNS ?

WORTHY CULTURAL EXPRESSIONS

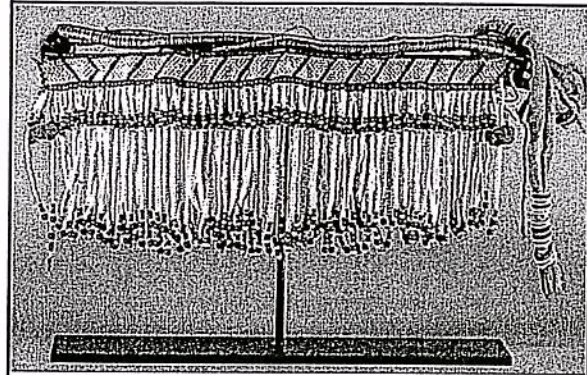
CIP



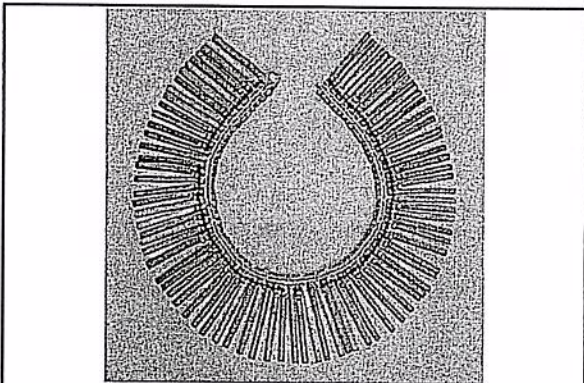




<http://www.ezakwantu.com>
Beaded Necklace



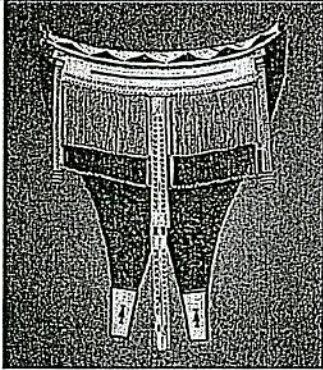
<http://www.ezakwantu.com>
Front Apron



<http://www.ezakwantu.com>
Nursing Charm



<http://www.ezakwantu.com>



<http://www.ezakwantu.com>

QUESTION ANSWERED

- **NO!** - under IPLAB: because they are not **new** and **original** at date of application for registration under Designs Act, as amended
- **YES!** – under PTK : because "**everyone knows**" (third parties) that they belong to a particular community (registration not necessary)

CIP

REASON FOR DIFFERENCE

- Threshold for protection in terms of IPLAB determined by principles of Design Law (unsuitable for TK)
- Threshold for protection under PTK custom made for specific situation as allowed by sui generis legislation

CIP