

111

13/02/23pc Rural Development and Land Reform



Reversing the Legacy of the 1913 Natives' Land Act



SPLUMA IMPLEMENTATION



rural development & land reform

Department:
Rural Development and Land Reform
REPUBLIC OF SOUTH AFRICA



Spatial Planning and Land Use Management Act

PROGRESS WITH IMPLEMENTATION OF THE ACT & MUNICIPAL SUPPORT

23 Oct 2013



rural development
& land reform

Department:
Rural Development and Land Reform
REPUBLIC OF SOUTH AFRICA

what is SPLUMA?

SPATIAL PLANNING AND LAND USE MANAGEMENT ACT (Act 16 OF 2013)

Single piece of NATIONAL legislation for the
ENTIRE country

SPATIAL PLANNING and LAND USE MANAGEMENT

(Uniformity, Effectiveness, Comprehensive)

what does SPLUMA entail ?

A Framework for a Planning System for the country (sec 2[2])

Dev Principles
(sec 7)

Policies and Legislation (sec 6)

**Spatial Development
Planning & Frameworks**
(Chapter 4)

**Land Use
Management
through Schemes**
(Chapter 5)

**other
provision
s**
(Chapter 7)

**Land development
Management**
(Chapter 6)

tools & instruments

the Act introduces provisions to cater for:

- † *Development Principles;*
- † *Norms and Standards;*
- † *Inter-Governmental Support;*
- † *Spatial Development Frameworks (SDFs) across National, Provincial, Regional & Municipal scales;*
- † *Land Use Schemes;*
- † *Municipal Planning Tribunals; and*
- † *Applications affecting National Interests.*



key SPLUMA timelines & activities

National Assembly Process

- ± The Spatial Planning and Land Use Management Bill (SPLUMB) served before the National Assembly in June 2012
- ± SPLUMB was considered by the Portfolio Committee on Rural Development and Land Reform during July 2012
- ± Public hearings held on 21 and 22 August 2012
- ± 32 submissions in total received from local government, provincial government, traditional authorities, private sector and civil society
- ± Department appeared before the Portfolio Committee during July to September 2012 and thereafter to engage on content of the Bill
- ± Amendments made to the Bill by the Portfolio Committee during September 2012
- ± Review of the amended Bill by Senior Counsel during October 2012 – January 2013
- ± Bill adopted by the National Assembly in February 2013

key SPLUMA timelines & activities

Pre-NCOP Process

- ± NA formally referred the Bill to the National Council of Provinces in February 2012
- ± Department conducted workshops in all provinces during April 2013
 - Report on progress with SPLUMB
 - Present updates on NCOP process
 - Engage on implementation of the Bill once enacted
- ± Provincial Workshops
 - Gauteng: 16 April 2013
 - Mpumalanga: 17 April 2013
 - KwaZulu Natal: 19 April 2013
 - Western Cape: 22 April 2013
 - Limpopo: 24 April 2013
 - North West: 26 April 2013
 - Free State: 30 April 2013
 - Eastern Cape: 3 May 2013 and 6 May 2013

key SPLUMA timelines & activities

NCOP Process

- ± Briefing by the Department to the Select Committee on Rural Development and Land Reform on 23 April 2013
- ± Public hearings on the Bill held by Provincial Legislatures during May 2013
- ± Public hearing process supported by the Department
- ± Provincial Legislature public hearings:
 - Gauteng: 8 May 2013
 - KwaZulu Natal: 9 May 2013; 10 May 2013; 15 May 2013
 - North West: 9 May 2013
 - Mpumalanga: 10 May 2013 (3 hearings)
 - Northern Cape: 13-15 May 2013
 - Eastern Cape: 13 May 2013; 15 May 2013; 17 May 2013; 19 May 2013
 - Western Cape: 14 May 2013; 17 May 2013
 - Free State: 14 May 2013
 - Limpopo: 29 May 2013 (2 hearings)
- ± Bill adopted without amendment by NCOP in June 2013

key SPLUMA timelines & activities

± PRESIDENTIAL ASSENT

- Bill signed into law by the State President on 2 August 2013
- New Act gazetted on 5 August 2013 as the Spatial Planning and Land Use Management Act, No. 16 of 2013

± IMPLEMENTATION

- Department has prepared and is executing an Implementation and Change Management Plan (ICMP)
- ICMP details what is required from all spheres of government in the implementation of SPLUMA
- ICMP establishes structures to coordinate SPLUMA implementation:
- National Coordinating Forum:
 - National and Provincial Government departments – COGTA, Agriculture, Environment,
 - 2 meetings held (11 September 2013, 16 October 2013, next meeting in November)
- Working Groups – Regulations/Policy; Guidelines; Institutional; Capacity Building
- Technical Implementation Forums – Provincial/Municipal structures (already in operation in Mpumalanga, Free State, Northern Cape)

key SPLUMA timelines & activities

± MUNICIPAL IMPLEMENTATION ENGAGEMENTS

- Western Cape: 4 October 2013; 11 October 2013; 24-25 October 2013; 6 November 2013
- North West: 8-9 October 2013
- Northern Cape: 8 October 2013; 10 October 2013
- Mpumalanga: 9 October 2013
- Gauteng: 9 October 2013
- Eastern Cape: 9-10 October 2013
- Limpopo: 10 October 2013
- KwaZulu Natal: 14-15 October 2013
- Free State: 17-18 October 2013

± Utilising SALGA Forums especially the current Provincial Members Assembly and the National Members Assembly (September to November 2013) to reach leaders at the municipal sphere.

key SPLUMA timelines & activities

± IMPLEMENTATION

- SPLUMA implementation National Coordinating Forum (scheduled monthly dates for 2014)
- Working Groups and Technical Implementation Forums – as required
- Direct engagement with all municipalities to complete spluma Municipal Readiness Assessment template (30 November 2013)
- Gazetting of draft SPLUMA Regulations for public comment (November 2013 – January 2014)
- Determination of commencement date for SPLUMA
- In-depth training of municipal politicians and officials on SPLUMA implementation (2014/2015)

quick updates

- ± Spatial Planning and Land Use Management Act (SPLUMA) signed into law by President on 02 August 2013, and formally published in the gazette on the 05 August 2013;
- ± SPLUMA not yet put into operation;
- ± Section 13(3) Interpretation Act allows different sections of the SPLUMA to be brought into operation on different dates;
- ± 9 provinces preparing/revisiting provincial planning legislation. No province ready with a SPLUMA-compliant provincial Act;
- ± Existing (old Ordinances, newer Provincial Acts and other) legislation may not conflict with the SPLUMA;
- ± some metropolitan municipalities preparing municipal planning by-laws;
- ± Some of our assumptions on powers of national and provincial spheres in relation to Scope of Municipal Planning Powers continue to be strained and tested especially in the courts; and
- ± litigation in courts continue to enrich our understanding of the planning law regulatory environment (the recent Cape Judgment particularly instructive).

sections of SPLUMA that may be brought into operation in the short term

<p style="text-align: center;">CHAPTER 1 INTRODUCTORY PROVISIONS</p> <ol style="list-style-type: none"> 1. Definitions 2. Application of Act 3. Objects of Act 4. Spatial planning system 5. Categories of spatial planning 	<p style="text-align: center;">CHAPTER 4 SPATIAL DEVELOPMENT FRAMEWORKS</p> <p style="text-align: center;"><i>Part A Preparation of spatial development frameworks</i></p> <ol style="list-style-type: none"> 12. Preparation of spatial development frameworks
<p style="text-align: center;">CHAPTER 2 DEVELOPMENT PRINCIPLES AND NORMS AND STANDARDS</p> <ol style="list-style-type: none"> 6. Application of development principles 7. Development principles 8. Norms and standards 	<p style="text-align: center;"><i>Part B Preparation and content of national spatial development framework</i></p> <ol style="list-style-type: none"> 13. National spatial development framework 14. Content of national spatial development framework
<p style="text-align: center;">CHAPTER 3 INTERGOVERNMENTAL SUPPORT</p> <ol style="list-style-type: none"> 9. National support and monitoring 10. Provincial support and monitoring 11. Municipal differentiation 	<p style="text-align: center;"><i>Part C Preparation, content and legal effect of provincial spatial development framework</i></p> <ol style="list-style-type: none"> 15. Provincial spatial development framework 16. Content of provincial spatial development framework 17. Legal effect of provincial spatial development framework

sections of SPLUMA that may be brought into operation in the short term

<p style="text-align: center;">Part D Preparation and content of regional spatial development framework</p> <p>18. Regional spatial development framework 19. Content of regional spatial development framework</p>	<p style="text-align: center;">CHAPTER 5 LAND USE MANAGEMENT</p> <p>23. Role of executive authority 24. Land use scheme 25. Purpose and content of land use scheme 26. Legal effect of land use scheme 27. Review and monitoring of land use scheme 28. Amendment of land use scheme and rezoning 29. Consultation with other land development authorities 30. Alignment of authorisations 31. Record of amendments to land use scheme 32. Enforcement of land use scheme</p>
<p style="text-align: center;">Part E Preparation and content of municipal spatial development framework</p> <p>20. Preparation of municipal spatial development framework 21. Content of municipal spatial development framework</p>	<p style="text-align: center;">CHAPTER 7 GENERAL PROVISIONS</p> <p>55. Exemptions 56. Delegation 57. Non-impediment of function 58. Offences and penalties 59. Repeal of laws (???) 60. Transitional provisions (<i>subject to guidelines</i>)</p>
<p style="text-align: center;">Part F Status of spatial development frameworks</p> <p>22. Status of spatial development frameworks</p>	

spluma and provincial act

Key Assumptions

- ± SPLUMA acknowledges the responsibility that provinces and the national government share for supporting local government;
- ± Province wants to see to it that municipal land use planning is done properly; and
- ± Provincial government has its own constitutional competences, some of which entail land use regulation.

2 key considerations

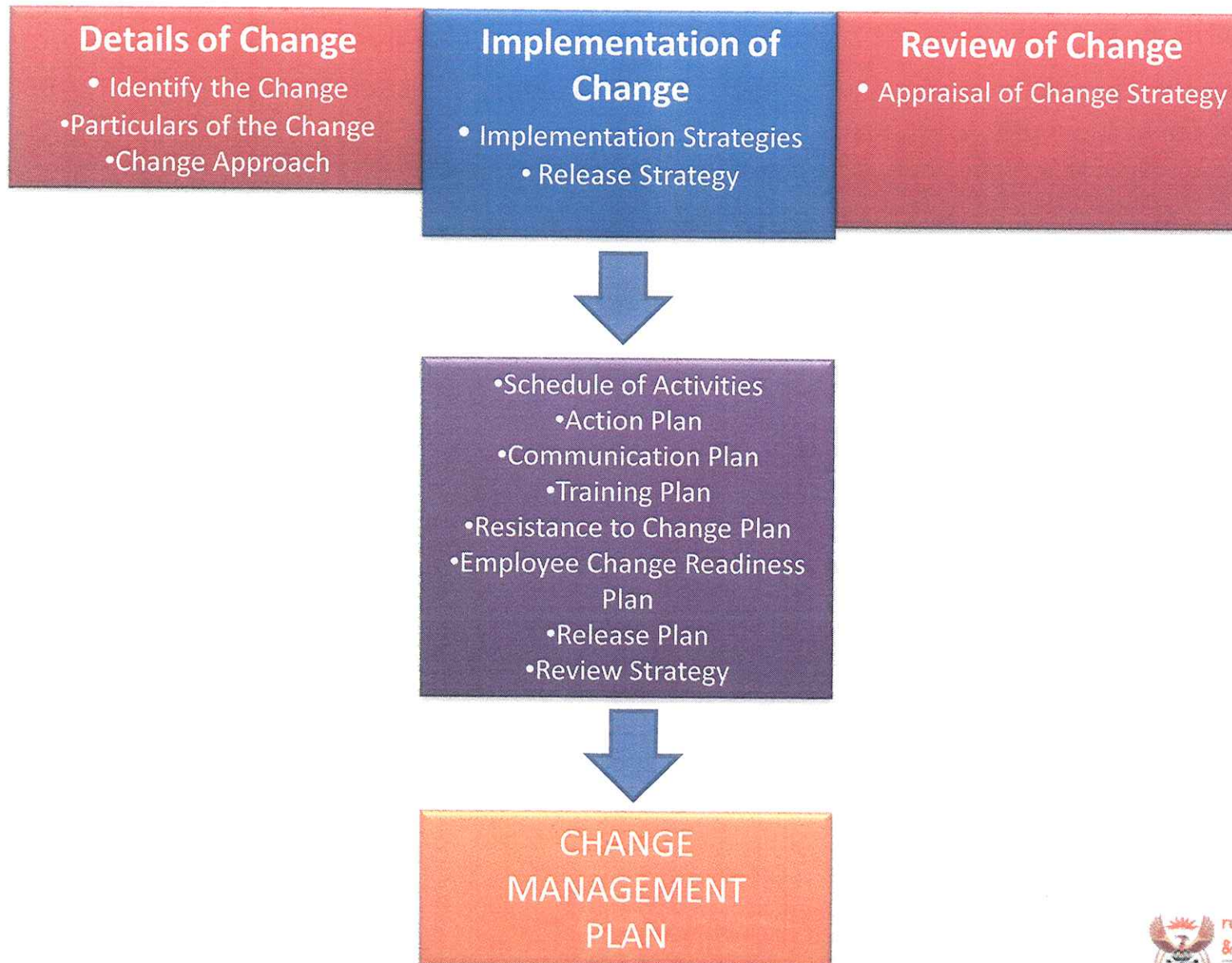
- ± Scope of Provincial Act
- ± Municipal Bylaws vs provincial Act

a change management process

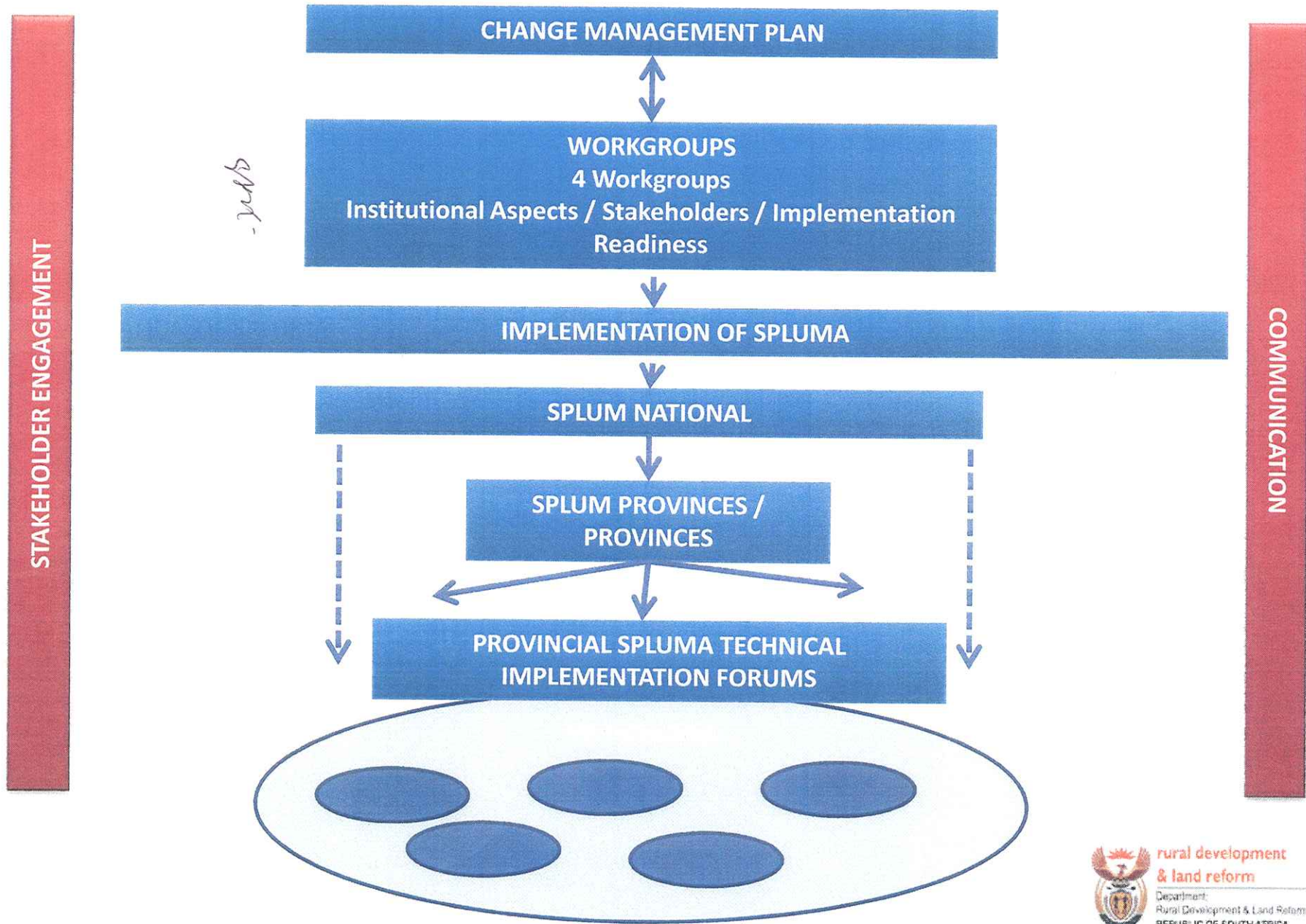
- ± Change Management is a process that will guide when change is made to a process or system to ensure its effective implementation into the business of the organisation.

- ± Key Driver for Change: the Spatial Planning and Land Use Management Act
 - Implementation
 - Powers and Functions (National / Provincial / Local)
 - Roles and Responsibilities (Support and Monitoring)

change management process



overview of change management plan



proposed workgroups

WORKGROUP 1 Regulations / Policy

- WORKGROUP 1**
- Regulations
 - Norms and standards
 - Application and interpretation of development principles
 - National Interest
 - Provincial legislation
 - Transitional measures
 - Spatial planning
 - Alignment of authorisations

WORKGROUP 2 Guidelines

- WORKGROUP 2**
- Land Use Management
 - Spatial Development Frameworks
 - Development Applications Manual
 - Alignment of Authorisations
 - Land Use Schemes

WORKGROUP 3 Institutional

- WORKGROUP 3**
- Human Resources
 - Legal Compliance
 - Internal Readiness
 - Draft Gazette Notices
 - Delegations
 - Systems
 - Communication
 - IT

WORKGROUP 4: Capacity Building

- WORKGROUP 4**
- Training
 - Coordination and distribution of products
 - Capacity building for municipal land use management
 - Spatial planning
 - Logistics



rural development
& land reform

Department:
Rural Development & Land Reform
REPUBLIC OF SOUTH AFRICA

implications for provinces

± Change of Focus – Trajectory of Work

- Implementation of SPLUMA

± SPLUMA Change Management Plan

- Engagement with Provinces / Municipalities
- Assessment of readiness of Municipalities in conjunction with Provincial Departments by end November 2013.
- Participation in Workgroups
- Championing Stakeholder Forums at Provincial Level – Provincial SPLUMA Implementation Forums
- Participating in Capacity Building / Training Initiatives
- Liaison with Key Provincial Stakeholders / Invites for SPLUMA related Engagements – Workshops

implications for municipalities

± Organisational

- Structures for Land Use Management
- Review of Delegations
- Review of Existing Systems (Land Use Management)

± Financial

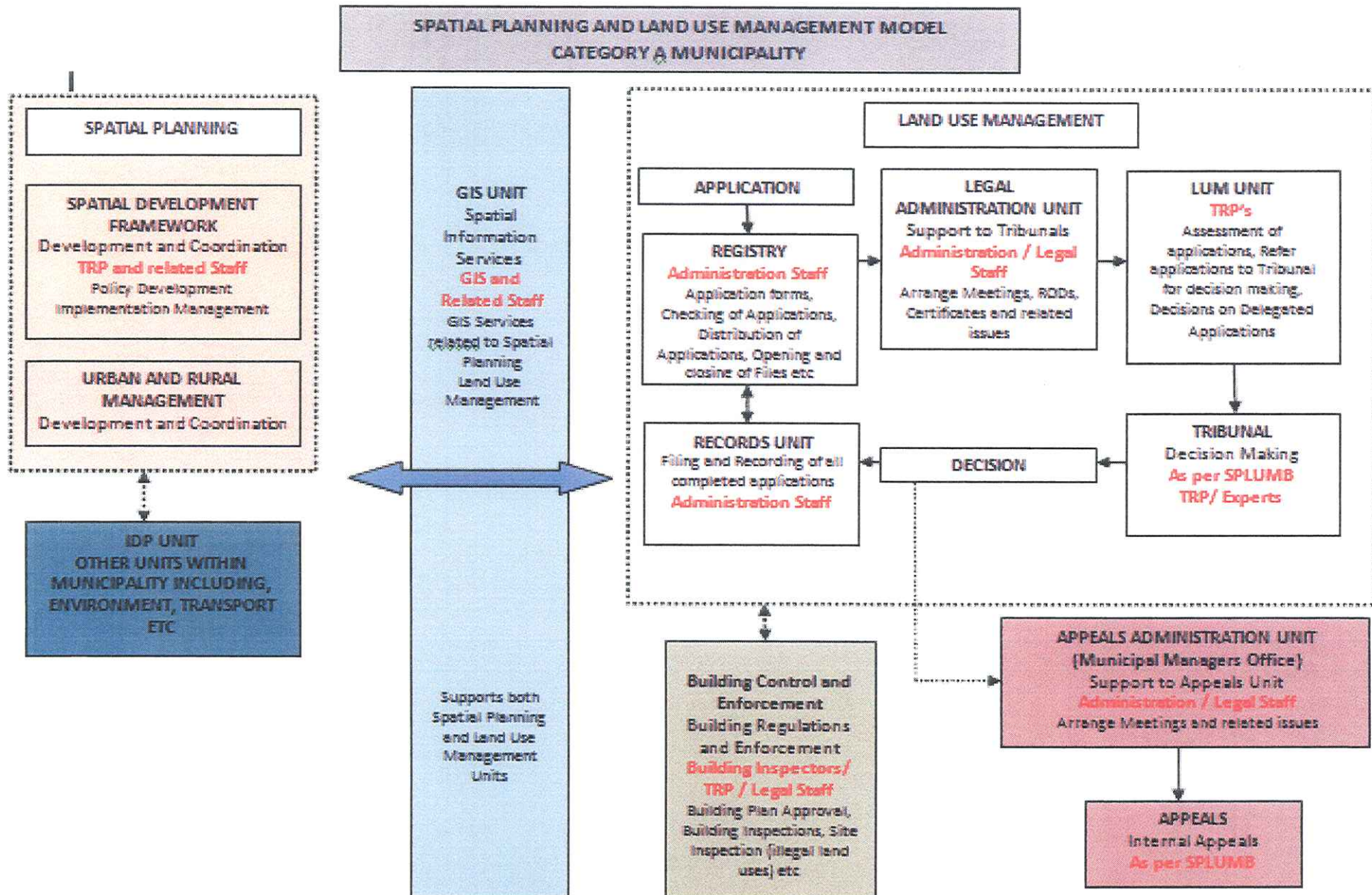
- Operational Requirements
- Human Resources

± Procedural

- New processes aligned to SPLUMA (operational and administrative)
- Gazetting of Notices etc

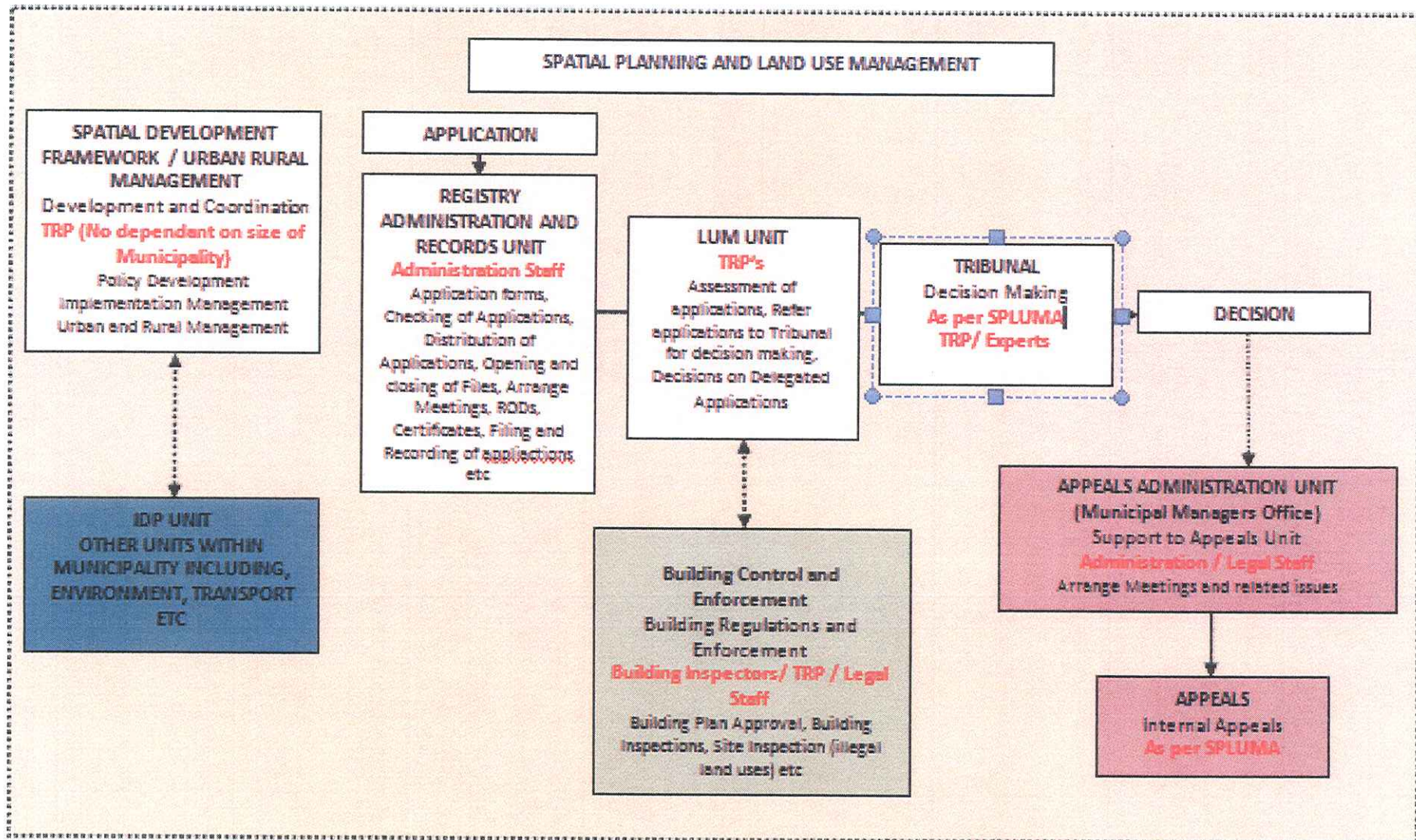


model A – metros / some locals

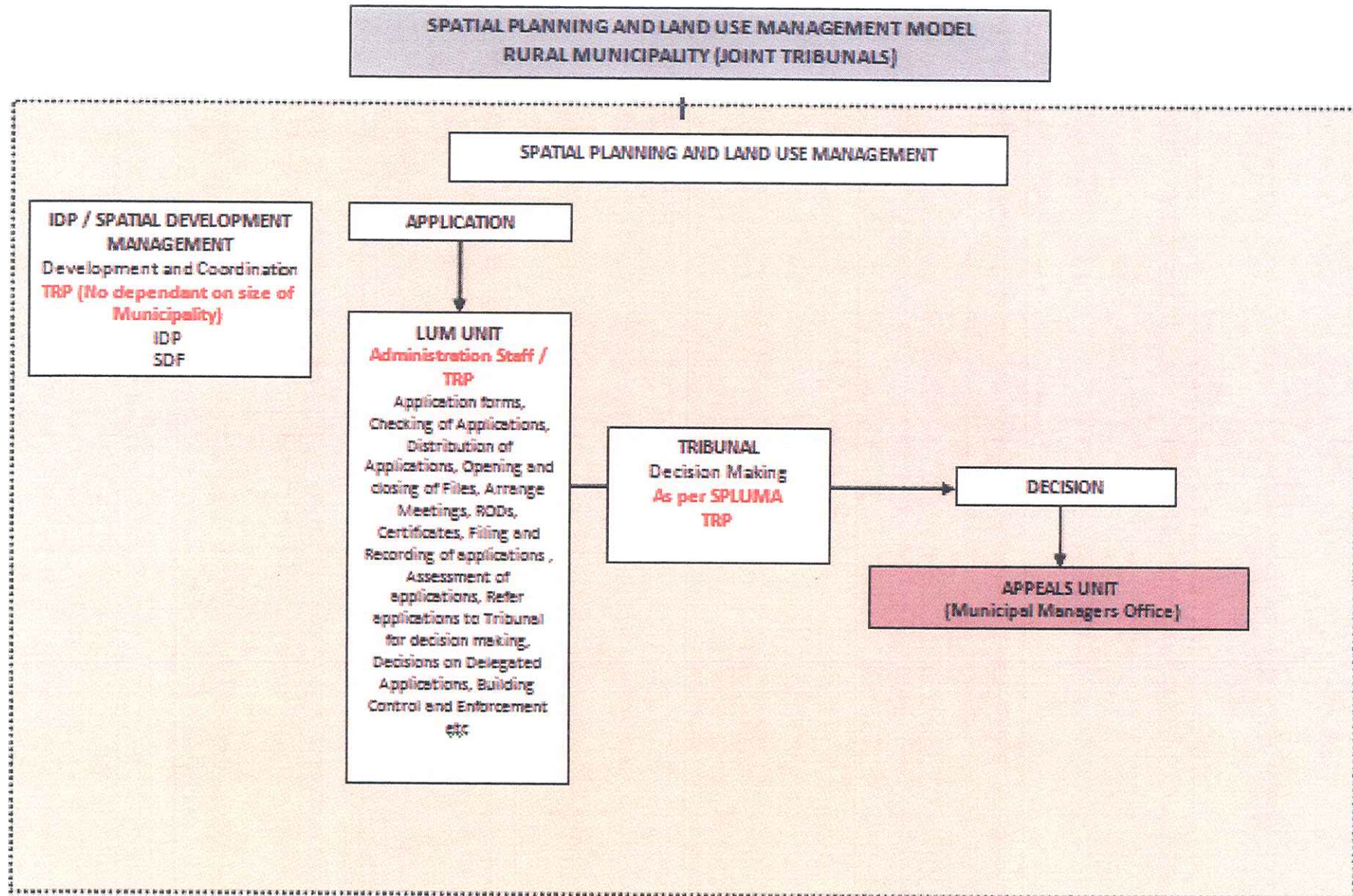


model b - locals

**SPATIAL PLANNING AND LAND USE MANAGEMENT MODEL
CATEGORY B / C MUNICIPALITY**



model c – rural / low capacity



baseline information

**DEPARTMENT OF RURAL DEVELOPMENT AND LAND REFORM (DRDLR)
IMPLEMENTATION & CHANGE MANAGEMENT PLAN TEMPLATE
FOR
THE SPATIAL PLANNING AND LAND USE MANAGEMENT ACT No. 16 of 2013 (SPLUMA)**

FORM 1 - BASELINE MUNICIPAL INFORMATION

Name of municipality: Demarcation code:

BACKGROUND

Reforming the municipality's spatial planning and land use management responsibilities will require

- a new approach to organisational change, one that takes into account change management processes
- a clear understanding of the SPLUMA, the Constitution, Municipal Structures Act, Municipal Systems Act and related provincial legislation.


This section outlines some of the key management and organisational considerations that must be borne in mind when commencing the reforms required. Since this list is not exhaustive, and must be amended as required to meet the council's own individual circumstances. Please refer SPLUMA on the actual responsibilities, duties and mandates imposed on a municipality.

Date/s of engagement	<input style="width: 95%; height: 25px;" type="text"/>	<input style="width: 95%; height: 25px;" type="text"/>	<input style="width: 95%; height: 25px;" type="text"/>	<input style="width: 95%; height: 25px;" type="text"/>	<input style="width: 95%; height: 25px;" type="text"/>
Name of DRDLR team members	<input style="width: 98%; height: 35px;" type="text"/>				
Name/s of municipal officials	<input style="width: 98%; height: 35px;" type="text"/>				
Designation	<input style="width: 98%; height: 35px;" type="text"/>				
Name/s of municipal officials	<input style="width: 98%; height: 35px;" type="text"/>				
Designation	<input style="width: 98%; height: 35px;" type="text"/>				

TYPE OF MUNICIPALITY - Tick the municipal type applicable to the municipality

Section 8 of the Municipal Structures Act - Metropolitan Municipalities	Section 3 of the Municipal Structures Act - Local Municipalities
(a) A municipality with a collective executive system	(a) A municipality with a collective executive system
(b) A municipality with a collective executive system combined with a subcouncil participatory system	(b) A municipality with a collective executive system combined with a ward participatory system
(c) A municipality with a collective executive system combined with a ward participatory system	(c) A municipality with a mayoral executive system
(d) A municipality with a collective executive system combined with both a subcouncil and a ward participatory system	(d) A municipality with a mayoral executive system combined with a ward participatory system

implementation readiness template

FORM 2 - MUNICIPAL ASSESSMENT TEMPLATE							 Rural Development & Land Reform Department of Rural Development and Land Reform REPUBLIC OF SOUTH AFRICA
Plan Ref	Action Required	Act Ref	Responsibility i.e. the SPLUMA	Delegation To	Final Target Date	Date Action Completed	Comments (ORDLR)
1	MANAGEMENT ARRANGEMENTS						
1.1	Council and the Mayor						
1.1.1	In instances where there is no mayor, executive mayor or executive committee, a councillor must be designated to exercise the powers and duties assigned to a mayor	S50 of MSA					
1.1.2	In instances where there is an executive committee, exercise the powers and functions in consultation with the executive committee						
1.1.3	Steps are taken by the Municipal Manager (MM) or an official nominated by the MM to ensure that the mayor is aware of his or her general responsibilities under the SPLUMA						
1.1.4	Processes and procedures are in place to ensure that the municipality participates in national and provincial development programmes	RSA Constitution S 153 (b)					
1.1.5	Processes and procedures are in place to ensure that the municipality makes inputs into national, provincial and regional SDPs	S 13 (1) ; S 15 (3) (c) & S 18 (1)					
1.2	Municipal officials: Municipal Manager, Director: Planning and Top Management						
1.2.1	Steps are taken to ensure that the Municipal Manager is aware of his or her responsibilities in terms of the SPLUMA						
1.2.2	Processes are in place to provide guidance and advice on compliance with the SPLUMA to political structures, political office-bearers and officials and undertake all responsibilities in terms of the SPLUMA						
1.2.3	Processes, procedures and systems are in place to ensure that all responsibilities in terms of SPLUMA are undertaken by the Municipality						
1.2.4	Appropriate systems are in place to ensure the implementation of the provisions contained in SPLUMA						
1.2.5	Contracts of employment in line with compliance with new roles and responsibilities under the SPLUMA for senior managers and other officials exercising spatial planning and land use management responsibilities are reviewed						
1.2.6	Processes, procedures/systems are in place to ensure that the municipality provides any information requested by national and provincial government with regard to administration of SPLUMA	S11 (3)					

template layout

DEPARTMENT OF RURAL DEVELOPMENT AND LAND REFORM (DRDLR)

IMPLEMENTATION REPORT

THE SP

Name of municipality: _____
(eg: Tlokwe)



Plan Ref	Action Required	Act Ref	Responsibility i.t.o. the SPLUMA	Delegation	Final Report Date	Date Action Completed	Comments (DLDR)
1.	MANAGEMENT ARRANGEMENTS						
	Reforming the municipality's spatial planning and land use management responsibilities will require <ul style="list-style-type: none"> - a new approach to organisational change, one that takes into account change management processes - a clear understanding of the SPLUMA, the Constitution, Municipal Structures Act, Municipal Systems Act and related provincial legislation. This section outlines some of the key management and organisational considerations that must be borne in mind when commencing the reforms required. Since this list is not exhaustive, and must be amended as required to meet the council's own individual circumstances. Please refer SPLUMA on the actual responsibilities, duties and mandates imposed on a municipality.						
1.1	Council and the mayor						
	In instances where there is no mayor, executive mayor or executive committee, designate a councillor to exercise the powers and duties assigned to a mayor	s59 of MSA					
	In instances where there is an executive committee, exercise the powers and						

concluding remarks

- SPLUMA is concerned with one specific dimension of land – how land is used.
- It introduces strategic and practical instruments, available to all spheres of government, to manage how land is used (development principles, spatial development frameworks, municipal land use schemes, municipal planning tribunals and appeal authorities).
- It ensures that these instruments are developed, used and changed in a transparent and inclusive way.
- It specifically ensures that all sectors, spheres and traditional leadership institutions are included in municipal land use management, which directly affects local communities.



rural development
& land reform

Department:
Rural Development and Land Reform
REPUBLIC OF SOUTH AFRICA

DRDLR SUPPORT TO MUNICIPALITIES IN DEVELOPMENT CREDIBLE SPATIAL PLANS

ESTABLISHMENT OF A NATIONAL FRAMEWORK FOR SPATIAL PLANNING & LAND USE MANAGEMENT

(IMPLEMENTATION OF SPLUMA)

General Regulations for SPLUMA

Draft EC Provincial Legislation and Regulations

Draft NW Provincial Legislation and Regulations

Discussion document on Norms and Standards

Information and Communication Portal for SPLUMA

Land Use Management System Guidelines

Municipal Land Use Scheme Guidelines (Including Model Land Use Schemes and Bylaws)

Guidelines on Management & Regulation of Land Use in Rural Areas

Guidelines on the Integration of Environmental Issues Into Land Use Management

Guidelines on Land Development in Dolomitic Areas

Guidelines for the Development of Precinct Plans

Revision of Guidelines for the Development of Municipal Spatial Development Frameworks

Land Development Applications Manual

Guidelines for Development of Regional Spatial Development Frameworks

Guidelines for the Development of Provincial Spatial Development Frameworks

National Project

**ESTABLISHMENT OF A NATIONAL FRAMEWORK FOR SPATIAL PLANNING & LAND USE MANAGEMENT
(IMPLEMENTATION OF SPLUMA)**

Criteria for the Determination of National Interests in Land Development Management		
Establishment of Spatial Planning and Land Use Management Center of Excellence		
Training and Capacity Support Programme for Municipal Implementation of the Spatial Planning & Land Use Management Act		
Towards a Framework for Measuring Spatial Planning Outcomes in South Africa		
Operational Manual for Land Use Regulators in terms of the Spatial Planning & Land Use Management Act		
Assessment of Related Regulatory Systems and Policies Impacting on Land Development Management		
Interim Framework for National Land Use Classification Standard		
National Spatial Planning Data Repository - (NSPDR)		
SDF Technical Platform		
Land Use Monitoring Tool		
Spatial Planning Coordination and Assessment Tool		
SPLUM Corporate GIS Geodatabase		
King Sabata Dalindyebo (KSD) Municipality Corporate GIS System		
Mapping of Rural Settlements and Assessment of Socio-Economic Infrastructure in the KZN, MP, LIM & MP Provinces	KZN, MP, LIM, & NW Provinces	KZN, MP, LIM, & NW Provinces
Integrated Spatial Planning Information Management System Free State & Northern Cape	FS & NC Provinces	Free State Province
Ehlanzeni District Municipality Land Audit	MP Province	MP Province
Randfontein Land Audit	West Rand District	
King Sabata Dalindyebo (KSD) Municipality Comprehensive Land Audit	O.R. Tambo	Whole LM
Spatial verification of all land reform and restitution projects for the Northern Cape	All 5 districts	All 290 wards
Determine and delineate Flood Risks/ lines in the Northern Cape for the purposes of development planning	All 5 districts	All 290 wards
Determine and delineate Flood Risks/ lines in the Free State for the purposes of development planning	Free State Province	Free State Province

Eastern Cape

PROVINCE	DISTRICT MUNICIPALITY	LOCAL MUNICIPALITY	SDF	LUMS	PRECINT PLANS*	23 DMs
	Alfred Nzo (DC44)		2013/2014			DC44
	Alfred Nzo (DC44)	Ntabankulu	2011/2012			DC44
	Alfred Nzo (DC44)	Umzimvubu			2013/2014	DC44
	Amathole (DC12)	Great Kei	2013/2014			DC12
	Amathole (DC12)	Mbhashe			2013/2014 X 2	DC12
	Cacadu (DC10)	Baviaans	2013/2014			
	Cacadu (DC10)	Kouga	2013/2014	2013/2014		
	Cacadu (DC10)	Ndlambe	2011/2012			
	Cacadu (DC10)	Sundays River Valley	2011/2012			
	Chris Hani (DC13)	Emalahleni	2010/2011			DC13
	Chris Hani (DC13)	Inxuba Yethemba	2013/2014	2013/2014		DC13
	Chris Hani (DC13)	Lukanji	2013/2014			DC13
	Chris Hani (DC13)	Sakhisizwe	2010/2011			DC13
	Chris Hani (DC13)	Tsolwana	2010/2011			DC13
	Joe Gqabi (DC14)	Gariep	2013/2014			DC14
	O.R.Tambo (DC15)	Mhloni	2010/2011			DC15
	O.R.Tambo (DC15)	Ngquza Hill	2010/2011		2011/2012	DC15

PROVINCE	DISTRICT MUNICIPALITY	LOCAL MUNICIPALITY	SDF	LUMS	PRECINT PLANS*	23 DMs	
Free State	Free State Province		2013/2014				
	Fezile Dabi (DC20)		2013/2014				
	Fezile Dabi (DC20)	Mafube	2013/2015				
	Lejweleputswa (DC18)	Masilonyana	2010/2011				
	Lejweleputswa (DC18)	Matjhabeng	2013/2014	2013/2014	2013/2014 X 3		
	Lejweleputswa (DC18)	Nala	2010/2011				
	Lejweleputswa (DC18)	Tokologo	2010/2011				
	Lejweleputswa (DC18)	Tswelopele	2010/2011				
	Thabo Mofutsanyane (DC19)	Dihlabeng	2010/2011				
	Thabo Mofutsanyane (DC19)	Maluti a Phofung	2013/2014				
	Thabo Mofutsanyane (DC19)	Nketoana	2013/2014				
	Thabo Mofutsanyane (DC19)	Setsoto	2010/2011				
	Xhariep (DC16)			2013/2013			DC16
	Xhariep (DC16)	Letsemeng		2013/2014			DC16
	Xhariep (DC16)	Mohokare		2013/2014			DC16
	Xhariep (DC16)	Naledi		2013/2014			DC16



PROVINCE	DISTRICT MUNICIPALITY	LOCAL MUNICIPALITY	SDF	LUMS	PRECINT PLANS*	23 DMs
Gauteng			2012/2013			
	Sedibeng (DC42)		2013/2014		2013/2014 X 3	
	Sedibeng (DC42)	Emfuleni	2010/2011		2011/2012, 2013/2014 X 4	
	Sedibeng (DC42)	Lesedi	2013/2014		2013/2014	
	Sedibeng (DC42)	Midvaal	2013/2014			
	West Rand (DC48)		2010/2011			
	West Rand (DC48)	Mogale City			2013/2014	
	West Rand (DC48)	Randfontein	2012/2013			
	West Rand (DC48)	Westonaria	2013/2014			



KwaZulu Natal

PROVINCE	DISTRICT MUNICIPALITY	LOCAL MUNICIPALITY	SDF	LUMS	PRECINCT PLANS*	23 DMs
	Amajuba (DC25)	Dannhauser		2013/2014	2012/2013	DC25
	Amajuba (DC25)	Emadlangeni	2010/2011			DC25
	Sisonke (DC43)	Ingwe	2011/2012		2011/2012	DC43
	Sisonke (DC43)	Kwa Sani			2011/2012	DC43
	Sisonke (DC43)	Ubuhlebezwe			2011/2012	DC43
	Sisonke (DC43)	Umzimkhulu			2012/2013 X 2; 2013/2014 x 2	DC43
	Ugu (DC21)	Ezingoleni	2010/2011			DC21
	Ugu (DC21)	Vulamehlo	2013/2014			DC21
	UMgungundlovu (DC22)	Mkhambathini	2010/2011			DC22
	UMgungundlovu (DC22)	Mpofana	2012/2013			DC22
	Umkhanyakude (DC27)	Hlabisa	2013/2014			DC27
	Umzinyathi (DC24)	Msinga	2011/2012		2011/2012	DC24
	Umzinyathi (DC24)	Nqutu	2010/2011			DC24
	Uthukela (DC23)	Emnambithi/Ladysmith		2013/2014	2013/2014	DC23
	Uthukela (DC23)	Okhahlamba	2010/2011			DC23
	Uthungulu (DC28)	Mthonjaneni	2011/2012		2012/2013	DC28
	Uthungulu (DC28)	Nkandla	2010/2011	2012/2013		DC28
	Uthungulu (DC28)	Ntambanana	2010/2011			DC28
	Uthungulu (DC28)	uMhlathuze			2013/2014	DC28
	Uthungulu (DC28)	uMlalazi		2013/2014		DC28
	Zululand (DC26)	Abaqulusi			2012/2013 X 3	DC26
	Zululand (DC26)	Nongoma	2010/2011			DC26
	Zululand (DC26)	UPhongolo	2012/2013			DC26



& land reform

Department:
Rural Development & Land Reform
REPUBLIC OF SOUTH AFRICA

PROVINCE	DISTRICT MUNICIPALITY	LOCAL MUNICIPALITY	SDF	LUMS	PRECINT PLANS*	23 DMs
Limpopo	Limpopo Province		2013/2014			
	Greater Sekhukhune (DC47)	Fetakgomo	2011/2012			DC47
	Greater Sekhukhune (DC47)	Makhuduthamaga	2013/2014			DC47
	Mopani (DC33)	Ba-Phalaborwa			2012/2013	DC33
	Mopani (DC33)	Maruleng	2013/2014			DC33
	Mopani (DC33)	Mutale	2010/2011			DC33
	Vhembe (DC34)		2013/2014			DC34
Mpumalanga	Mpumalanga Province		2012/2013			
	Ehlanzeni (DC32)		2013/2014			DC32
	Ehlanzeni (DC32)	Bushbuckridge	2010/2011		2012/2013	DC32
	Ehlanzeni (DC32)	Thaba Chweu	2013/2014			DC32
	Ehlanzeni (DC32)	Umjindi	2013/2014			DC32
	Gert Sibande (DC30)	Dipaleseng	2010/2011			
	Gert Sibande (DC30)	Govan Mbeki	2013/2014			
	Gert Sibande (DC30)	Lekwa		2013/2014		
	Gert Sibande (DC30)	Msukaligwa		2013/2014		
	Gert Sibande (DC30)	Pixley ka Seme		2013/2014	2012/2013	
	Nkangala (DC31)	Victor Khanye			2012/2013	

North West

PROVINCE	DISTRICT MUNICIPALITY	LOCAL MUNICIPALITY	SDF	LUMS	PRECINT PLANS*	23 DMs
	Bojanala (DC37)	Kgetlengrivier		2013/2014		
	Bojanala (DC37)	Madibeng			2012/2013 X 2	
	Bojanala (DC37)	Moretele		2013/2014		
	Bojanala (DC37)	Moses Kotane	2010/2011			
	Dr Kenneth Kaunda (DC40)	Maquassi Hills	2010/2011			
	Dr Kenneth Kaunda (DC40)	Tlokwe City Council	2013/2014			
	Dr Ruth Segomotsi Mompoti (DC39)	Greater Taung	2013/2014	2013/2014	2013/2014 X 3	DC39
	Dr Ruth Segomotsi Mompoti (DC39)	Kagisano-Molopo	2011/2012	2013/2014		DC39
	Dr Ruth Segomotsi Mompoti (DC39)	Mamusa		2013/2014		DC39
	Dr Ruth Segomotsi Mompoti (DC39)	Naledi	2011/2012	2013/2014		DC39
	Ngaka Modiri Molema (DC38)		2012/2013			DC38
	Ngaka Modiri Molema (DC38)	Ditsobotla	2011/2012			DC38
	Ngaka Modiri Molema (DC38)	Mafikeng	2013/2014			DC38
	Ngaka Modiri Molema (DC38)	Ramotshere Moiloa	2013/2014	2013/2014		DC38
	Ngaka Modiri Molema (DC38)	Ratlou		2013/2014		DC38

Northern Cape

PROVINCE	DISTRICT MUNICIPALITY	LOCAL MUNICIPALITY	SDF	LUMS	PRECINT PLANS*	23 DMs
	Northern Cape Province		2012/2013			
	Frances Baard (DC9)		2013/2014			
	Frances Baard (DC9)	Phokwane	2013/2014			
	John Taolo Gaetsewe (DC45)	Gamagara	2013/2014			DC45
	John Taolo Gaetsewe (DC45)	Ga-Segonyana	2013/2014			DC45
	Namakwa (DC6)		2011/2012			
	Namakwa (DC6)	Hantam	2010/2011			
	Namakwa (DC6)	Kamiesberg	2010/2011			
	Namakwa (DC6)	Karoo-Hoogland	2010/2011			
	Namakwa (DC6)	KhΓi-Ma	2010/2011			
	Namakwa (DC6)	Nama Khoi	2012/2013			
	Namakwa (DC6)	Richtersveld	2010/2011			
	Pixley ka Seme (DC7)		2013/2014			
	Pixley ka Seme (DC7)	Kareeberg	2010/2011			
	Pixley ka Seme (DC7)	Renosterberg	2012/2013			
	Pixley ka Seme (DC7)	Umsobomvu	2010/2011	2013/2014		
	Siyanda (DC8)		2011/2012			
	Siyanda (DC8)	!Kheis	2013/2014			
	Siyanda (DC8)	//Khara Hais		2013/2014	2013/2014 X 2	
	Siyanda (DC8)	Kai !Garib	2011/2012			
	Siyanda (DC8)	Mier	2013/2014			



rural development
& land reform

Department:
Rural Development & Land Reform
REPUBLIC OF SOUTH AFRICA

Western Cape

PROVINCE	DISTRICT MUNICIPALITY	LOCAL MUNICIPALITY	SDF	LUMS	PRECINT PLANS*	23 DMs
	Cape Winelands (DC2)	Witzenberg	2011/2012			
	Central Karoo (DC5)		2012/2013			
	Central Karoo (DC5)	Laingsburg	2010/2011			
	Central Karoo (DC5)	Prince Albert	2012/2013			
	Eden (DC4)		2013/2014			
	Eden (DC4)	George	2013/2014		2012/2013	
	Eden (DC4)	Oudtshoorn	2012/2013	2013/2014		
	Overberg (DC3)		2012/2013			
	Overberg (DC3)	Overstrand			2012/2013, 2013/2014	
	Overberg (DC3)	Theewaterskloof			2012/2013	
	West Coast (DC1)	Bergrivier	2012/2013		2013/2014	
	West Coast (DC1)	Cederberg	2013/2014			
	West Coast (DC1)	Saldanha Bay			2013/2014	

PROVINCE	DISTRICT MUNICIPALITY	LOCAL MUNICIPALITY	SDF	LUMS	PRECINCT PLANS*	23 DMs
----------	-----------------------	--------------------	-----	------	-----------------	--------

Spatial Development Frameworks (SDF) = 106

Land Use Management Systems (LUMS) = 21

Precinct Plans = 51

SPATIAL PLANS DEVELOPED : BRANCH SPLUM 178

Thank You



rural development
& land reform

Department:
Rural Development & Land Reform
REPUBLIC OF SOUTH AFRICA

Sunday Ogunronbi

A/Deputy Director-General: Spatial Planning & Land Use
Management | Department: Rural Development & Land
Reform | +27 82 577 5655 | +27 12 312 9371 | 086 692 8882
(f) | sogunronbi@ruraldevelopment.gov.za