

**Briefing to  
PORTFOLIO COMMITTEE  
on  
HUMAN SETTLEMENTS  
STRATEGIC INTEGRATED PROJECTS  
OCTOBER 2013**



**human settlements**

Department:  
Human Settlements  
**REPUBLIC OF SOUTH AFRICA**

# PRESENTATION: INDEX

1. Introduction & Brief Overview of SIPs
2. Rationalizing SIPs w Dept's Priorities
3. Dept's Interventions in SIPs
  - SIPs: 1, 4, 5, 6, 7 (& 18)
4. Grant Commitments
5. Institutional Arrangements/Processes



human settlements

Department:  
Human Settlements  
REPUBLIC OF SOUTH AFRICA

# INTRODUCTION

- From the spatial analysis of the country needs, 18 Strategic Integrated Projects (SIPs) have been identified.
- The SIPs cover a range of economic and social infrastructure across all nine provinces, with emphasis on poorer provinces.
- The work now aligned with human settlement planning and with skills development, as key cross-cutting areas.
- Thus the need to align HSDG/USDG allocations with PICC and Strategic Infrastructure Priorities (SIPs).



human settlements

Department:  
Human Settlements  
REPUBLIC OF SOUTH AFRICA

# SIP CATEGORISATION

SIP TYPE	NUMBER
<b>Geographic</b>	<b>1 – 5</b>
Energy	8 – 10
<b>Spatial</b>	<b>6, 7, 11</b>
Social Infrastructure	12 – 14
Knowledge	15, 16
Regional	17
<b>Sanitation</b>	<b>18</b>



human settlements

Department:  
Human Settlements  
REPUBLIC OF SOUTH AFRICA

# APPROACH & SYNERGY

- To rationalize Dept Priorities with SIPs.
  1. Mining Town Interventions (SIP 1 & 4)
  2. Priority Projects (SIPs 1 – 3)
  3. Grant [Progr.] Performance:
    - a) Northern Cape Development Corridor (SIP 5)
    - b) 23 Least Resourced Districts (SIP 6)
    - c) HSDG & USDG in Metros (SIP 7)
    - d) Sanitation Masterplan (SIP 18)



# SIP 1



**human settlements**

Department:  
Human Settlements  
**REPUBLIC OF SOUTH AFRICA**

# SIP 1

- **Unlocking the Northern Mineral Belt with Waterberg as the Catalyst**
- Shelter provision connected to mining towns
- **Lephalale – R275 million**

**Limpopo, SHRA**



human settlements

Department:  
Human Settlements  
REPUBLIC OF SOUTH AFRICA

# Strategic Integrated Projects

## Mining Towns

2013/14



**human settlements**

Department:  
Human Settlements  
**REPUBLIC OF SOUTH AFRICA**



# MINING TOWNS : EXPENDITURE 2011-13

	2011/12 Spend	2012/13 Spend
Matjhabeng	R 8 725 688	R 5 764 674
Merafong	R 45 501 834	R -
Mogale City	R 11 077 455	R 25 098 000
Randfontein	R 3 508 240	R -
Westonaria	R 246 361 474	R -
Greater Sekhukune	R 126 684 061	
Lephalale	R 22 417 711	
Emalahleni	R 56 407 326	R 62 032 927
Rustenburg		R 985 074



**human settlements**

Department:  
Human Settlements  
REPUBLIC OF SOUTH AFRICA

# 2013/14 HSDG Allocation

Mining Towns	Sites	Budget (R )	Units	Budget (R)	Total Allocation	% Alloc ation
Greater Tubatse : Burgersfort & Steelpoort (LP)	2,471	39,154	135	2,284	41,438	3.13
Lephalale (LP)	730	147,261	120	56,336	203,597	15.37
Rustenburg (NW)	1,450	37,397	1,920	143,784	181,181	14,80
Matlosana (NW)	0	0	1,705	113,207	113,207	9.24
Madibeng (NW)	1,915	53,308	645	67,312	120,621	9.85
Matjhabeng (NW)	943	35,270	1,172	107,505	149,424	13.33
Emalahleni (MP)	1,500	39,000	639	68,345	107,345	9,44%
West Rand (GP)	6,150	202,948	3,419	341,401	618,058	14,9%
Carltonville (GP)	0	0	0	0	97,046	2,4%
<b>Total</b>	<b>15,159</b>	<b>554,338</b>	<b>9755</b>	<b>900,174</b>	<b>1,631,917</b>	

**9.60%**

**% National Allocation**  
**human settlements**

Department:  
Human Settlements  
REPUBLIC OF SOUTH AFRICA



# Processes Undertaken

- Prepared a Framework :
  - What was required of each of the identified municipalities,
  - what processes would be put into place to achieve the objective etc.
- Scheduled meetings with
  - provincial departments, municipalities and social partners / stakeholders and informed the meetings about the intervention.



# Processes Undertaken

- Designed Template for the content list of the Human Settlements Implementation Plan
  - Each mining towns is expected to complete and submit to their Councils,
  - Submit to NDOHS and Minmec
  - implementation in 2014-2015 financial year .
- Details of work undertaken by NDOHS was presented to the IMC by DMR.
- Alignment processes
  - NUSP
  - HDA
- Assistance to municipalities



human settlements

Department:  
Human Settlements  
REPUBLIC OF SOUTH AFRICA

# Anticipated Outcomes

Outcomes	Outputs	Responsibility	Timeline	Dependencies	Status
Integrated and sustainable human settlements in mining towns	Strategy for formulating Human Settlement Implementation Plan (HSIP)	DHS, DCOG, Municipalities	End February 2013	DHS Approval	Complete
	Development of municipal level plans	DHS, DCOG, DMR Municipalities	July 2013	Municipalities cooperation and compliance	In process, target date 31 May 2013
	Request for funding upgrade of informal settlements	DHS/NT	End March 2013	NT approval	R 1.1 bn approved for 2014/15
	Approval of Draft Human Settlement Implementation Plan (HSIP)	DHS/SHRSA	End April 2013	DHS Approval	HS Minmec June 2013
	Implementation of HSIP	DHS	January 2014	Implementation by municipalities	



**human settlements**

Department:  
Human Settlements  
**REPUBLIC OF SOUTH AFRICA**

# Expected Prioritised Mining Towns Programme Response

Sub-Programme	HSDG PRIORITY
<p><b>1. Incremental Housing programme</b></p> <ul style="list-style-type: none"> <li>• Informal Settlement Upgrading</li> <li>• Emergency Housing Assistance               <ul style="list-style-type: none"> <li>• IRDP Informal settlements</li> <li>• PHP</li> </ul> </li> </ul>	First Priority
<p><b>2. Social and Rental</b></p> <ul style="list-style-type: none"> <li>• Community residential units (CRU) <u>Converted/Upgraded</u></li> <li>• Community residential units (CRU) <u>Constructed</u></li> <li>• Social Housing: Capital Grants for rental housing (Funded by NDoH)               <ul style="list-style-type: none"> <li>• Institutional Subsidies</li> </ul> </li> </ul>	Second Priority
<p><b>3. PRIORITY PROJECTS</b> non negotiable compliance to ring fenced amount</p>	Third Priority



**human settlements**

Department:  
Human Settlements  
REPUBLIC OF SOUTH AFRICA

# SIPS – SIP 4

## NW: QUARTER ONE PERFORMANCE REPORT

INTERVENTION & PROJECT NAME	Fun-ding Source	EXPENDITURE		
		Planned Q1 (R'100)	Actual Q1 (R'100)	Q2 Target (R'100)
MOSES KOTANE- SAULSPOORT RURAL HOUSING	HSDG	5 209	0	7 103
Madibeng - Lethabong (2100 Subs) B01030001 Sn 176	HSDG	3 044	0	6 088
Matlosane L.M Khuma Ext 1,3,4 & 5 (168 subs)	HSDG	1 118	0	1 588
Matlosane L M- Jouberton Ext 3 (50 Subs)	HSDG	2 061	0	724
Madibeng L M Bokfontein Housing Project (529 Subs)	HSDG	3 510	0	4 096
Rustenburg (4000) Boitekong ext 8 1759	HSDG	6 148	0	9 221
Madibeng 1000 Sunset Bay Trading	HSDG	1 691	28054	4 397
Rustenburg Seraleng Anglo-platinum Flisp	HSDG	1 765	0	1 765
Matlosana Khuma ext 6 500 units	HSDG	0	6476	0
Matlosana Jouberton Ext 19 (150 Units)	HSDG	559	5861	794
Matlosana Jouberton Ext 16 (429 Units)	HSDG	559	9238	794
Madibeng Mamba	HSDG	3 510	0	3 510
Rustenburg Meriting Ext 4 & 5 Makole	HSDG	8 094	0	12 904
Matlosana Nkagisang Village 143 Kgantso	HSDG	838	0	1 191
Matlosana Jouberton Ext 10 Trans Gariep	HSDG	2 235	4619	3 177

# SIPS – SIP 4

## NW: QUARTER ONE PERFORMANCE REPORT

INTERVENTION &  PROJECT NAME	EXPENDITURE		
	Planned Q1 (R'100)	Actual Q1 (R'100)	Q2 Target (R'100)
Matlosana Jouberton Ext 20 Tigane	1 118	26 055	1 588
Rustenburg Cru 100 Rigid	9 600	13 264	9 600
Rustenburg Cru 100 Toro	9 600	9 796	9 600
Matlosana Cru 100 Proplan	0	0	0
MATLOSANE - KHUMA HOSTEL	0	0	0
Matlosane- Jouberton Ext. 3 Letsema (149 Subs) Sn 001	2 061	0	724
Matlosana Emergency Storm Damaged 200 units	0	0	0
Madibeng CRU	8 000	0	9 600
Madibeng Sunway FLISP	8 859	0	5 237
Madibeng Dekroon	0	0	0
wonderkop informal	5 500	0	5 500
Matlosana Jouberton ext 17 906 units	2 045	0	2 907
Matlosana Jouberton ext 21 741 units	1 677	0	2 382
Matlosana Jouberton ext 23 1164 units	1 677	0	2 382
Matlosana Kanana ext 11 772 units	1 677	0	2 382
Matlosana Kanana ext 13 2757units	1 677	0	2 382
Moses Kotane Mogwase Urban	1 416	0	2 360
Moses Kotane Rural 1200	1 691	0	4 397
Rustenburg Boitekong Ext 16	18 760	0	20 465
Rustenburg Seraleng	3 960	0	9 900



# LIMPOPO

# SIP 1/SIP 4



**human settlements**

Department:  
Human Settlements  
**REPUBLIC OF SOUTH AFRICA**

# Lephalale Local Municipality

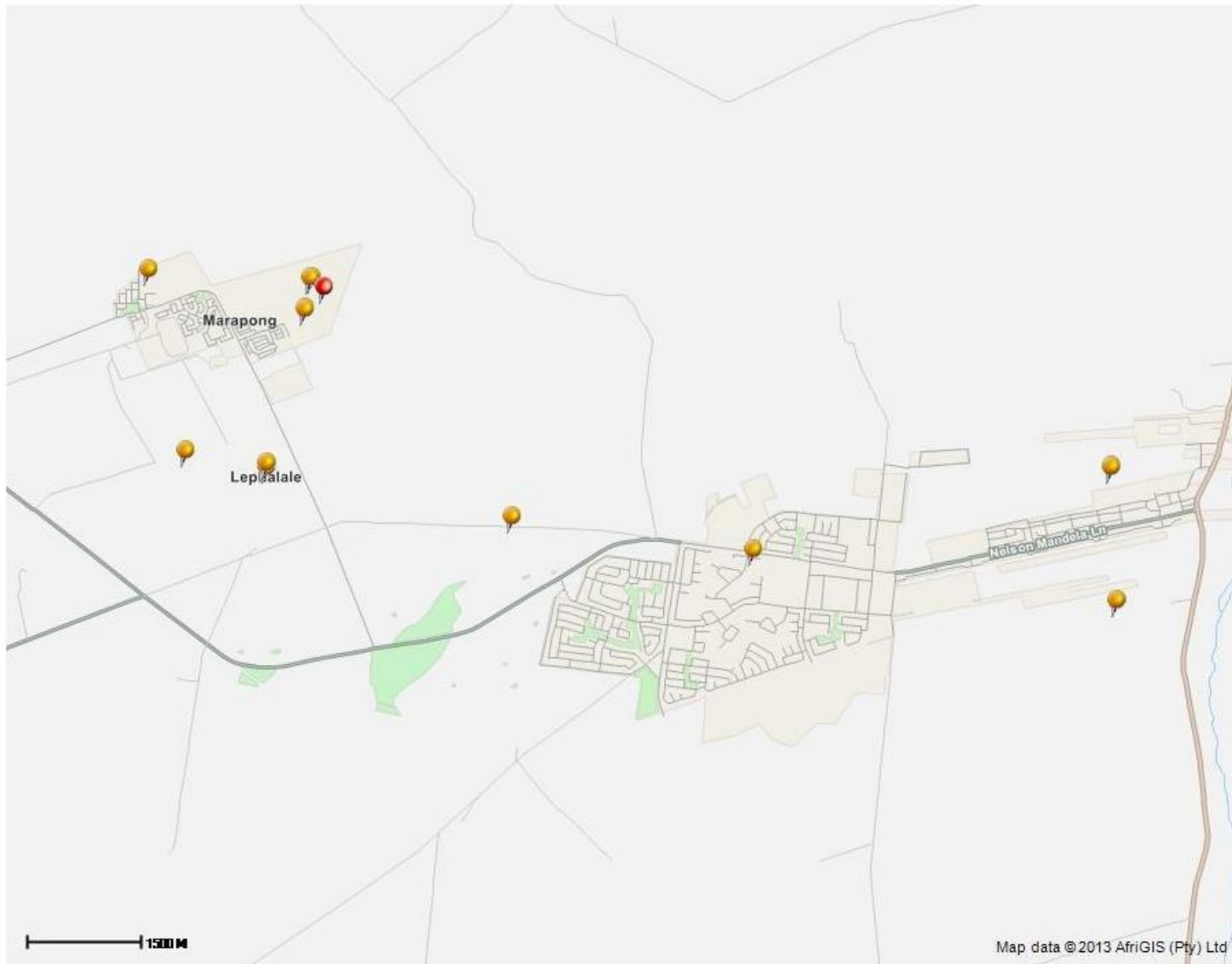
## (Lephalale town)

PROVINCE HSDG 2013/14 PLAN Sub-Programme	PROVINCE HSDG 2013/14 PLAN Total Annual Budget (R)	PROVINCE HSDG 2013/14 PLAN %
Social & Rental Housing	90,000,000.00	6,79
Informal Settlements upgrading	615,000.00	0,05
Total	112,982,000.00	8,53

### According to the IDP 2012/13

- oversupply of units in upper market housing segment. lower supply of housing units on rental and low-income level.
- Projected Household projections for Node area 2 is 19,067 by 2015
- UISP in 45 priority municipalities,
- Eradicate informal settlements by the year 2020.
- reduce the growth of informal settlement by 40% in 2016
- **land for residential units 18974**
- **Land approved and proclaimed for residential units 25069**
- Ensure adequate land availability by 2014<sup>22</sup>

# Mining Towns: Lephalale, Limpopo



Contact us at  
[land@chehda.co.za](mailto:land@chehda.co.za)



## Legend

- HDA\_rsa\_active\_mtes
- Housing Projects 2012
- Informal Settlements 2011

0 500 1000 1500  
Metres

<http://www.lapsis.co.za>

Map data ©2013 AfriGIS (Pty) Ltd

Printed on 24 May 2013



# MPUMALANGA

## SIP 4



**human settlements**

Department:  
Human Settlements  
**REPUBLIC OF SOUTH AFRICA**

# Emalahleni – Mpumalanga.

Sub-Programme	Sites	Budget (R)	Units	Budget (R)	Total Annual Budget	%
Rental	0	0	239	39,845,630	39,845,630	3,5%
Informal Settlements	1000	26,000,000	400	28,000,000	54,000,000	4,8%
IRDP	500	13,000,000	0	0	13,000,000	1,1%
FLISP	0	0	0	0	0	0
Other	0	0	0	500,000	500,000	0,04%
<b>TOTALS</b>	<b>1,500</b>	<b>39,000,000</b>	<b>639</b>	<b>68,345,630</b>	<b>107,345,630</b>	<b>9,44%</b>



human settlements

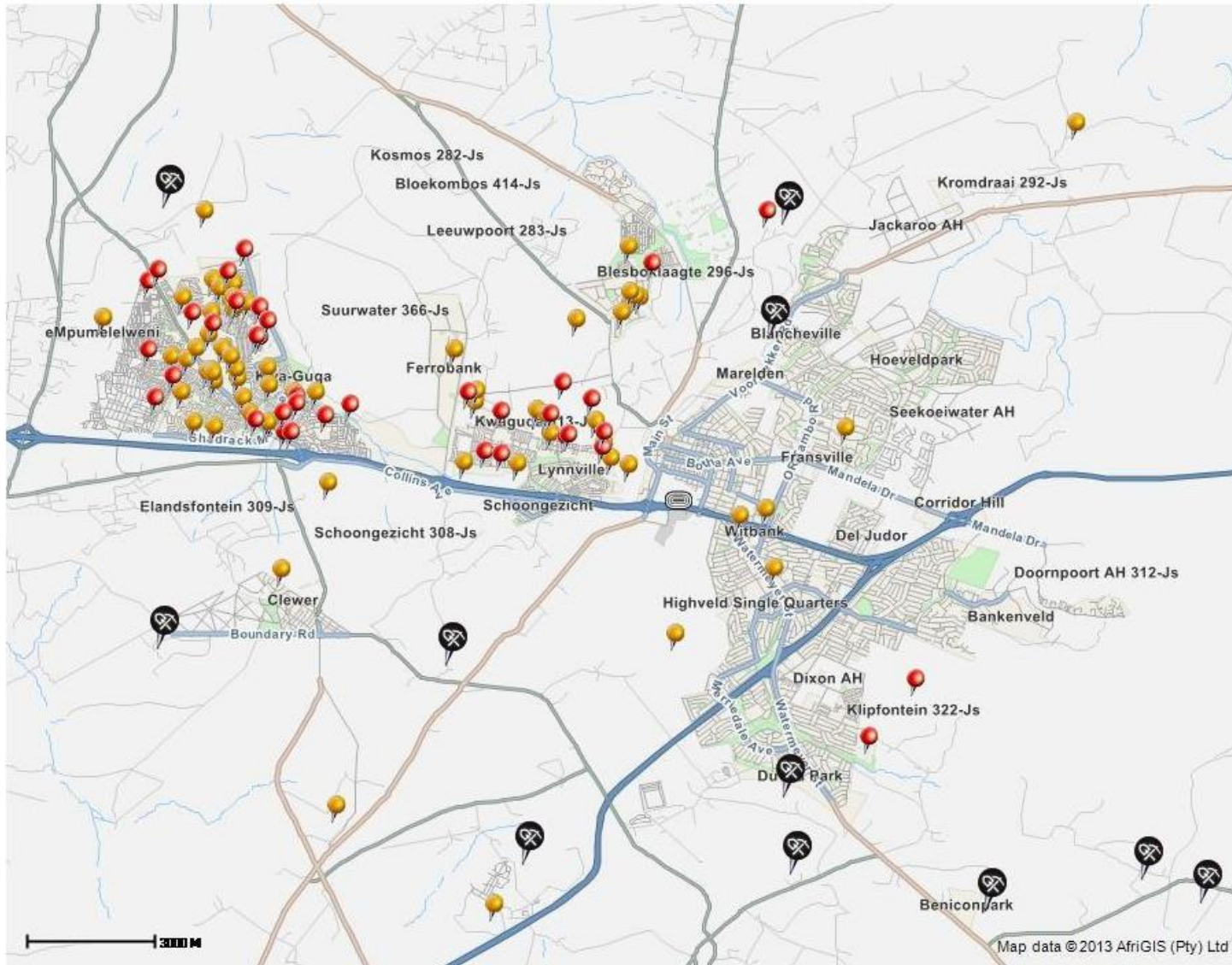
Department:  
Human Settlements  
REPUBLIC OF SOUTH AFRICA



# Projects Progress

GIS Province	Project No	Project Phase	Project Description	Project Type	GIS_LM	Project Completion	Planned Units	Number of Beneficiaries	Houses Completed	Total Subsidy	Expenditure
MP	E10030010	E10030010/1	OPSCAP/LEVEL ONE ACCREDITATION/EMALAHLENI MUN	OPS/CAP	Emalahleni Local Municipality	Running	-00	-00	-00	R 3,400,000	R 2,800,000
MP	E08040005	E08040005/1	SH/ARTECH ARCHITECTS/CHILD CARE CENTRE/EMALAHLENI MUN	Social Housing Project	Emalahleni Local Municipality	Completed	-00	-00	-00	R 235,343	R 235,343
MP	E08040004	E08040004/1	SH/ARTECH ARCHITECTS/COMMUNITY HALL/EMALAHLENI MUN	Social Housing Project	Emalahleni Local Municipality	Completed	-00	-00	-00	R 685,005	R 685,005
MP	E08040006	E08040006/1	SH/ARTECH ARCHITECTS/PHOLA COMMUNITY HALL/EMALAHLENI MUN	Social Housing Project	Emalahleni Local Municipality	Running	-00	-00	-00	R 631,949	R 535,100
MP	E08120004	E08120004/1	SH/HARRIET CONSTRUCTION/COMMUNITY HALL/EMALAHLENI MUN	Social Housing Project	Emalahleni Local Municipality	Completed	-00	-00	-00	R 4,363,092	R 4,363,092
MP	E09020019	E09020019/1	SH/MGUGWANA INVEST JV MEONDO TRAD/COMMUNITY HALL/EMALAHLENI MUN	Social Housing Project	Emalahleni Local Municipality	Running	-00	-00	-00	R 4,025,154	R 3,408,154
	E0812000	E0812000	SH/PHETLOKUHLE BUS ENTER/CHILD CARE CENTRE/EMALAHLENI	Social Housing	Emalahleni Local					R	R

# Mining Towns: Emalahleni, Mpumalanga



Contact us at  
land@chda.co.za



### Legend

-  HDA\_rsa\_active\_mies
-  Housing Projects 2012
-  Informal Settlements 2011



<http://www.lapsis.co.za>



**SIP 5**

**Saldanha-Sishen  
Development Corridor**

**2013/14**



**human settlements**

Department:  
Human Settlements  
**REPUBLIC OF SOUTH AFRICA**

# KHATU/SISHEN

Sub-Programme	Sites	Budget (R)	Units	Budget (R)	Total Annual Budget	%
Social & Rental Housing	0	0	0	0	0	0
Housing finance linked Individual subsidies (FLISP)	0	0	0	0	0	0
Informal Settlements Upgrading	1,600	6,400,000	431	33,575,000	39,975,000	10
IRDP : Top Structure	0	0	102	7,505,000	R 7,505,000	1,8
Other	0	0	0	0	0	0
<b>TOTAL</b>	<b>1,600</b>	<b>6,400,000</b>	<b>533</b>	<b>41, 080, 000</b>	<b>47, 480, 000</b>	<b>11,8</b>



**human settlements**

Department:  
Human Settlements  
REPUBLIC OF SOUTH AFRICA

# OLIFANTSHOEK PROJECT BACKGROUND

- One of the issues raised was the housing backlog, and therefore the Municipality identified an area for residential development.
- The areas requires township establishment, services and top structures.
- For the current financial year, the Municipality is undertaking township establishment through funding from the Mines
- The Department will fund the services once the township establishment is concluded.



**human settlements**

Department:  
Human Settlements  
REPUBLIC OF SOUTH AFRICA

# SESHENG PROJECT BACKGROUND

- Sesheng is a residential area located 2kilometers west of Kathu.
- The area was planned as a high density residential area for mine workers, which excluded families.
- North of Sesheng are hostels and few houses to serve middle management at the time.
- Years later the mine workers started to move out of the hostels to build family units.
- The municipality then formalised the area into 600 sites, and is the fastest growing residential area outside of Kathu.



human settlements

Department:  
Human Settlements  
REPUBLIC OF SOUTH AFRICA

# KATHU PROJECT BACKGROUND

- The aim of the project is to address the housing backlog in the area as well as integrating mixed typology units.
- A great need for housing development exists in the Kathu area due to the economic influx and migration of people for employment.
- The project provides for various land uses, to name a few: 200 rental units, 100 bonded sites and 1300 sites for residential zone 1 and 2.



**human settlements**

Department:  
Human Settlements  
REPUBLIC OF SOUTH AFRICA

# GA-SEGONYANA PROJECT BACKGROUND

- Ga-Segonyana Municipality originated as a cross boundary Municipality from 2000 – 2006
- An estimated 80% of the Municipalities population resides in the 33 rural villages, administered through traditional authority
- The 33 villages consist of mud houses, which can no longer provide shelter to the inhabitants.
- The communities are scattered, due to increased mining activity, there is an emergence of shacks and land grab.
- No formal township establishment exists in the area, and currently the residents receive PTOs’.

## human settlements

Department:  
Human Settlements  
REPUBLIC OF SOUTH AFRICA



# JOE MOROLONG PROJECT BACKGROUND

- Joe Morolong Municipality has been identified as the rural presidential node, and consists of 190 villages.
- The villages are scattered and connected through gravel roads.
- Over 60% of the population is made up of indigents in the area, with self constructed houses which are dilapidated.
- The residents are serviced with the 200m standpipe and VIP latrines.

human settlements

Department:  
Human Settlements  
REPUBLIC OF SOUTH AFRICA



# SIYANDA PROJECT BACKGROUND

- The site is located within the central business district and is therefore in close proximity to existing structures (education, medical, creche, transport etc)
- The project aims to deliver 200 units, made up of one and two bedroom residential units to cater for rental accommodation for lower-income groups



**human settlements**

Department:  
Human Settlements  
REPUBLIC OF SOUTH AFRICA



# DANIELSKUIL PROJECT BACKGROUND

- The Danielskuil housing project spans over two municipal residential suburbs: Tlhakalatlou and Kuilsville
- The township establishment of the area is completed and the land is vested in the name of the Municipality
- The total number of sites available for development are 835, which were serviced through the Human Settlements Conditional Grant and Municipal funding

human settlements

Department:  
Human Settlements  
REPUBLIC OF SOUTH AFRICA



Project Name	Medium Term Budget Requirement R				Long Term Budget Requirement (5 Years) R	Long Term Budget Requirement (10 Years) R	Funding Secured/Medium Term Allocations R				Funding to be secured/allocated	
	Up to March 2013	2013/14	2014/15	2015/16			2016/2020	2021/2030	Up to March 2013	2013/14		2014/15
OLIFANTSHOE K 200	11,681,448	4,464,000						11,681,448	4,464,000	0	0	16,145,448
SESHENG 490	12,698,663	5,040,000	0	0	0	0	12,698,663	5,040,000	0	0	17,738,663	
KATHU 1600	4,008,448	6,400,000	24,000,000	17,500,000	48,000,000	168,000,000	4,008,448	6,400,000	0	0	257,500,000	
GA-SEGONYANA 1000	70,669,844.24	14,400,000	14,400,000	0	0	0	70,669,844.24	14,400,000	14,400,000	0	70,669,844.24	
JOE MOROLONG 1000	73,672,773	14,400,000	23,040,000	0	0	0	73,672,773	14,400,000	0	0	73,672,773	
UPINGTON 200		10,800,000	3,600,000	0	0	0		10,800,000	3,600,000	0	14,400,000	
DANIELSKUIL 50	23,464,660	3,600,000	3,600,000	3,600,000	34,000,000	0	23,464,660	3,600,000	0	0	41,200,000	



## human settlements

Department:  
Human Settlements  
REPUBLIC OF SOUTH AFRICA

# PROGRESS OF PROJECTS INFORMATION



**human settlements**

Department:  
Human Settlements  
**REPUBLIC OF SOUTH AFRICA**

**Total Progress to Date ( Start - March 2013)**

PROJECT NAME	Total Actual Spend to date (R)	Total Actual Local Spend to date R	Total Actual Foreign Spend to date R	% Progress (Spend)	% Progress (Construction)	Total Direct Jobs Planned (to date)	Total Actual Direct Jobs (to date)	% Youth of Actual Direct Jobs (to date)	% Women of Actual Direct Jobs (to date)	% Disabled of Actual Direct jobs (to date)	Additional info / Key Challenges
OLIFANTSHO EK	0	0	0	0	0	0	0	0	0	0	The first phase of town planning will be funded by the Mines
SESHENG 490	12,485,652.00	12,485,652.00	0		261	10	16	16	0	0	The project will be closed of
KATHU 1600	4,008,310.85	4,008,310.85	0	0	0	0	0	0	0	0	The first phase was town planning, which does not make use of unskilled labour
GA-SEGONYANA 1000	47,180,208.20	47,180,208.20	0		653	20	21	21	0	0	None
JOE MOROLONG 1000	26,719,273.44	26,719,273.44	0		428	20	22	18	4	0	Slow progress on the project
UPINGTON 200	0	0	0	0	0	0	0	0	0	0	The project is at tender stage
DANIELSKUI L 50	0	0	0		0	10	20	1	19	0	The contractor commenced construction in July 2013



**human settlements**

Department:  
Human Settlements  
REPUBLIC OF SOUTH AFRICA

**SIP 7**

**INTEGRATED URBAN SPACE  
AND PUBLIC TRANSPORT**

**Grant Performances  
in  
8 Metros**

**2013/14**



**human settlements**

Department:  
Human Settlements  
**REPUBLIC OF SOUTH AFRICA**

# SIP 7



## SIP 7: Integrated Urban Space and Public Transport Programme

Coordinate planning and implementation of public transport, human settlement, economic and social infrastructure and location decisions into sustainable urban settlements connected by densified transport corridors.



# SIP 7: Current Conjuncture



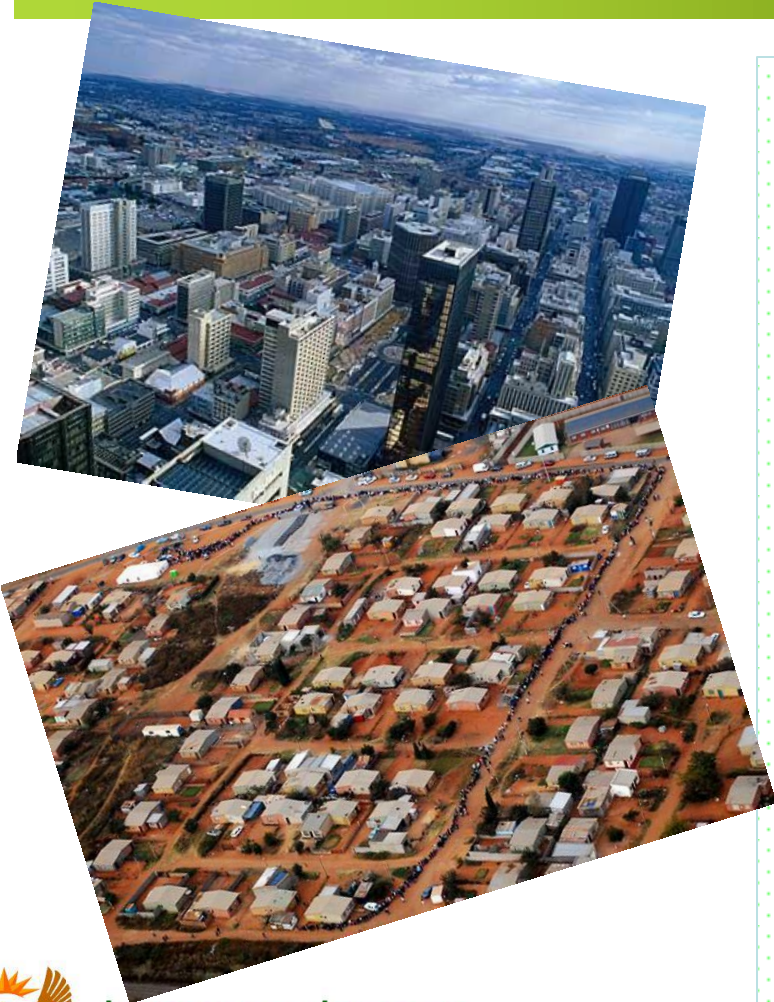
- Human settlements remain key spaces in regional, nat'l & int'l economies, cultural activities, education, etc.
- Urbanisation & growth of especially large urban areas continues unabated.
- While much of this is natural growth, significant in-migration continues.



**human settlements**

Department:  
Human Settlements  
REPUBLIC OF SOUTH AFRICA

# SIP 7: Current Conjuncture



## SA Cities

- Highest Gini Coefficients
- Strategic long-term planning & targeted investment into particularly public infrastructure and amenities, such as urban public transport networks
- Current segregated urban form & resultant high dependency on resource-based movement

human settlements

Department:  
Human Settlements  
REPUBLIC OF SOUTH AFRICA





# Human Settlement Delivery: Our Conceptions - Reconsidered

## Human Settlements

- Safe & secure environments;
- Access to economic opportunities;
- Mix of housing & tenure options;
- Reliable basic services;
- Reliable public amenities

### Responding to Growth:

- Addressing Backlogs
- Targeted Interventions
- Key Priorities

### Managing Growth:

- Conditionalities & Enhanced Performances:
  - Spatial Form & Efficiencies
  - Hsg Typologies

**human settlements**

Department:  
Human Settlements  
REPUBLIC OF SOUTH AFRICA



# SIP 7: Co-ordinated Response

- Implications:
  - Provide far more guidance and direction re.
    - the (space) economy,
    - spatial form and land use,
    - movement/transport, & environment
  - Far greater responsiveness to local needs and calls for attention & assistance
  - Differentiated responses & programmes and far better targeted support;
  - and co-ordinated funding



# Expected Metropolitan Grant Response

## HSDG

### First Priority

#### Incremental Housing programme

- Informal Settlement Upgrading
- Emergency Housing Assistance
  - IRDP Informal settlements
  - PHP

### Second Priority

#### Social and Rental

- Community residential units (CRU)

#### Converted/Upgraded

- Community residential units (CRU) Constructed
- Social Housing: Capital Grants for rental housing (Funded by NDoH)
  - Institutional Subsidies

### 3. PRIORITY PROJECTS

non negotiable compliance to ring fenced amount

PRIORITY

1

Housing internal services/  
Human Settlements

PRIORITY

2

Bulk Sanitation/ waste  
management

PRIORITY

3

Bulk Water

PRIORITY

4

Bulk Roads

PRIORITY

5

Parks, cemeteries



# City of Cape Town

Sub-Programme	HSDG %
Incremental Housing Programme	49,0%
Financial Intervention	8,0%
<b>Total</b>	<b>57,0%</b>

## PRIORITY

1

Bulk connector

**R756 403 374.00**

## PRIORITY

2

Housing internal services & top structures (USDG) and (HSDG) projects under construction

**R223 734 865.00**

## PRIORITY

3

OPEX

**R55 573 559.00**

## PRIORITY

4

Rental Units Upgrade CRU

**R22 472 597.00**

## PRIORITY

5

Institutional/ social housing projects

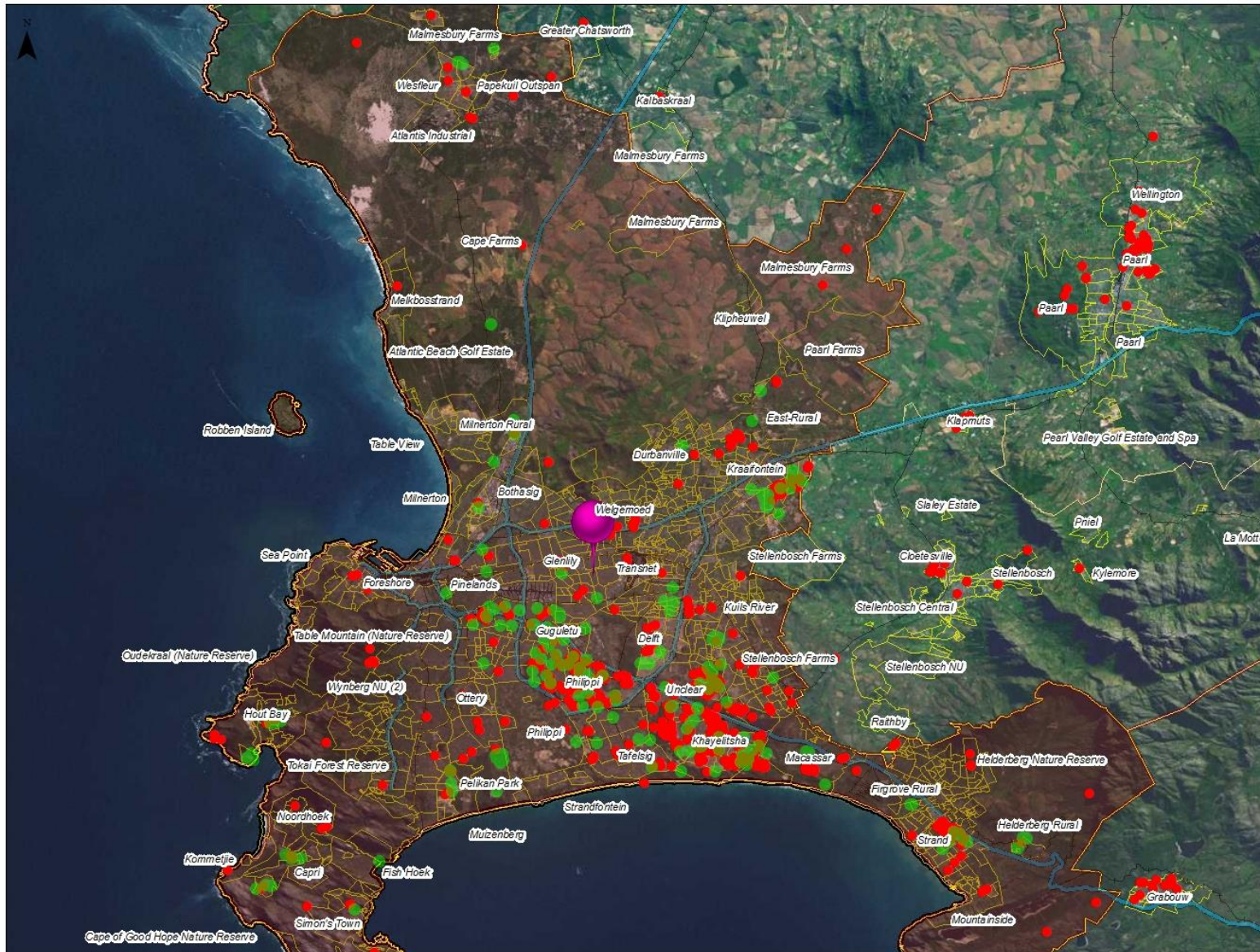
**R17 195 186.00**



**human settlements**

Department:  
Human Settlements  
REPUBLIC OF SOUTH AFRICA

# USDG Projects in relation to Housing Projects 2012



land@thehda.co.za

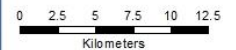
## Legend

- USDG Projects
- Housing Projects 2012



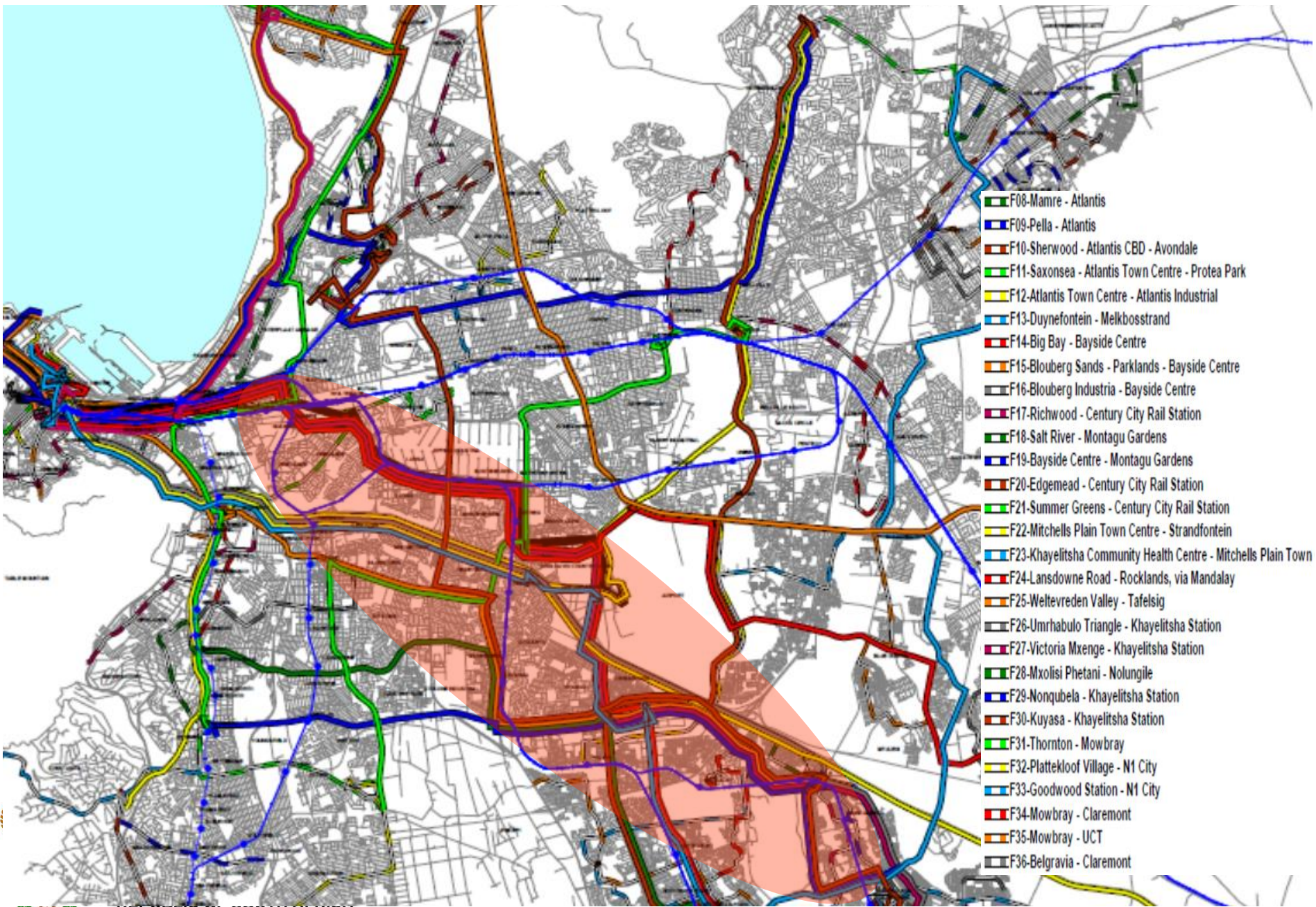
SIP 7

- Highways
- Railway
- Suburbs
- SIPs Towns
- Local Municipality
- District Municipality
- Provincial Boundary

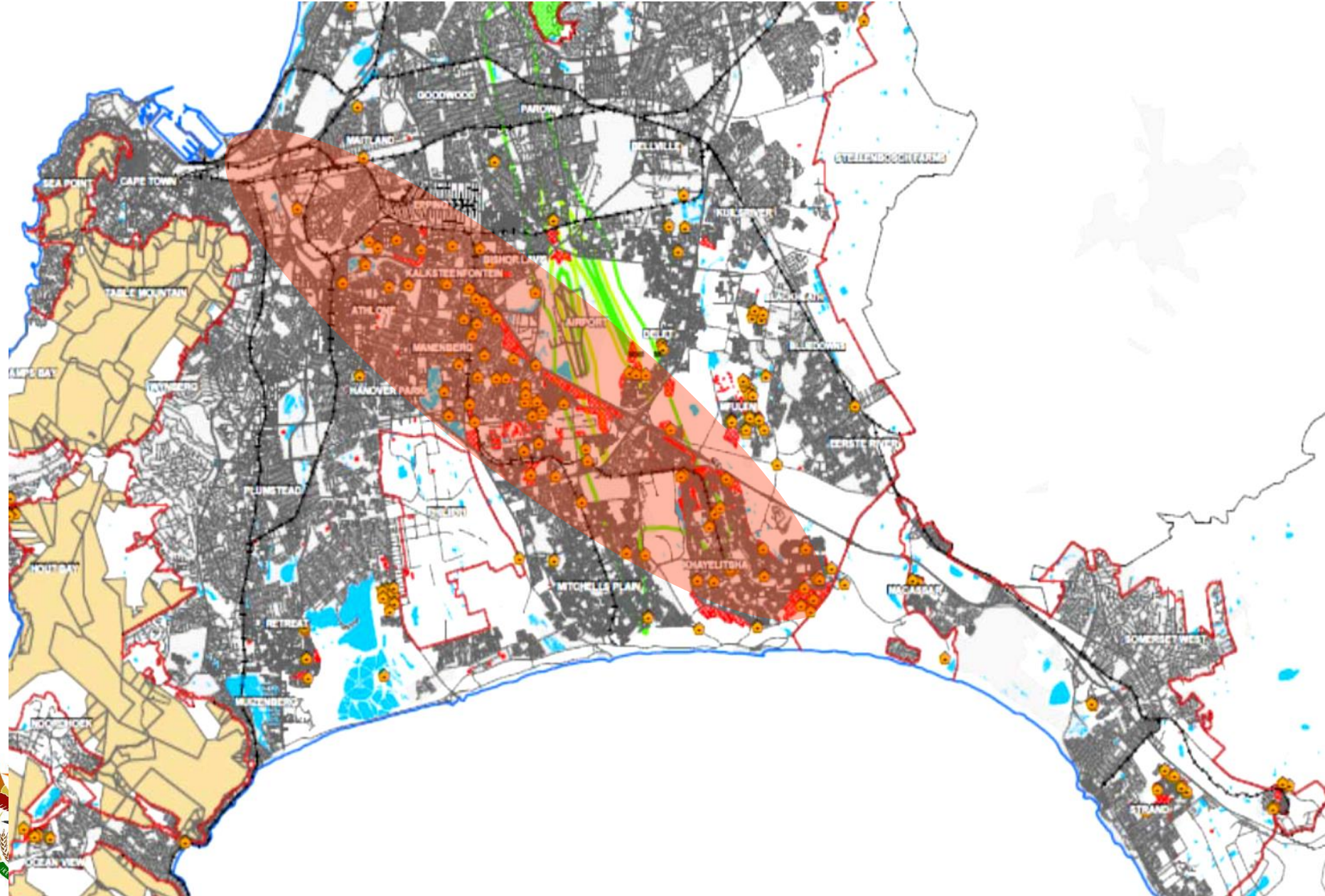


# City of Cape Town: Transport Infrastructure Plan

## INTEGRATED URBAN SPACE AND PUBLIC TRANSPORT

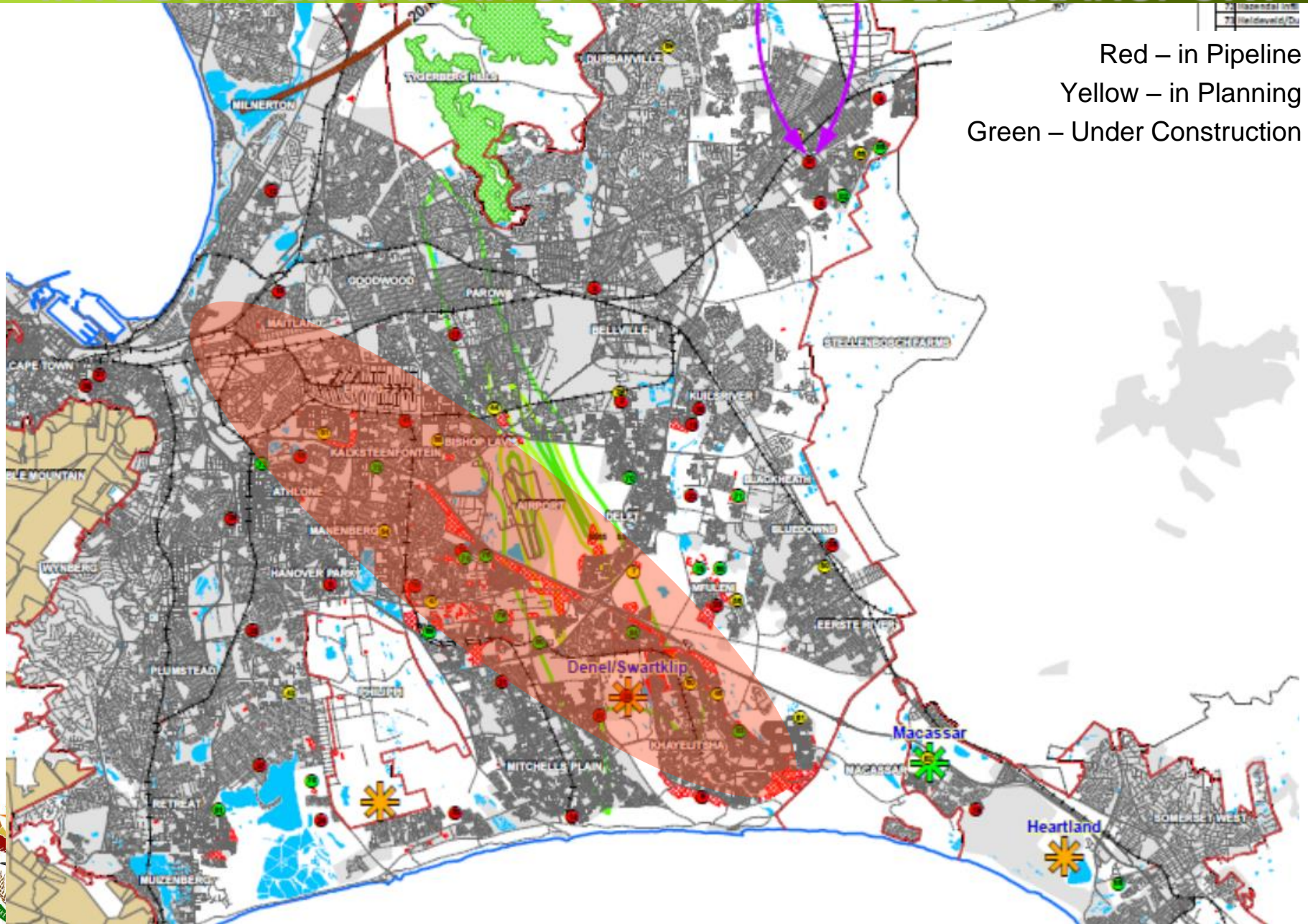


**CITY OF CAPE TOWN BEPP 2013/ 2014**  
**DISTRIBUTION OF USDG FUNDED PROJECTS**  
**INTEGRATED URBAN SPACE AND PUBLIC TRANSPORT**



# Distribution of New Housing Projects

## INTEGRATED URBAN SPACE AND PUBLIC TRANSPORT





# Ekurhuleni Metro

Ekurhuleni Sub-Programme	HSDG %
Incremental	17,82%
Financial	3,00%
Social and Rental	5%
Rural	0%
Priority Projects	0,0%
Province Specific	0%
<b>Total</b>	<b>25,35%</b>

PRIORITY 1	Roads and Storm Water	<b>33%</b>
PRIORITY 2	Water and Sanitation	<b>22%</b>
PRIORITY 3	Energy	<b>17%</b>
PRIORITY 4	SRAC	<b>6%</b>
PRIORITY 5	Waste Management	<b>4%</b>



## human settlements

Department:  
Human Settlements  
REPUBLIC OF SOUTH AFRICA

# INTEGRATED URBAN SPACE AND PUBLIC TRANSPORT



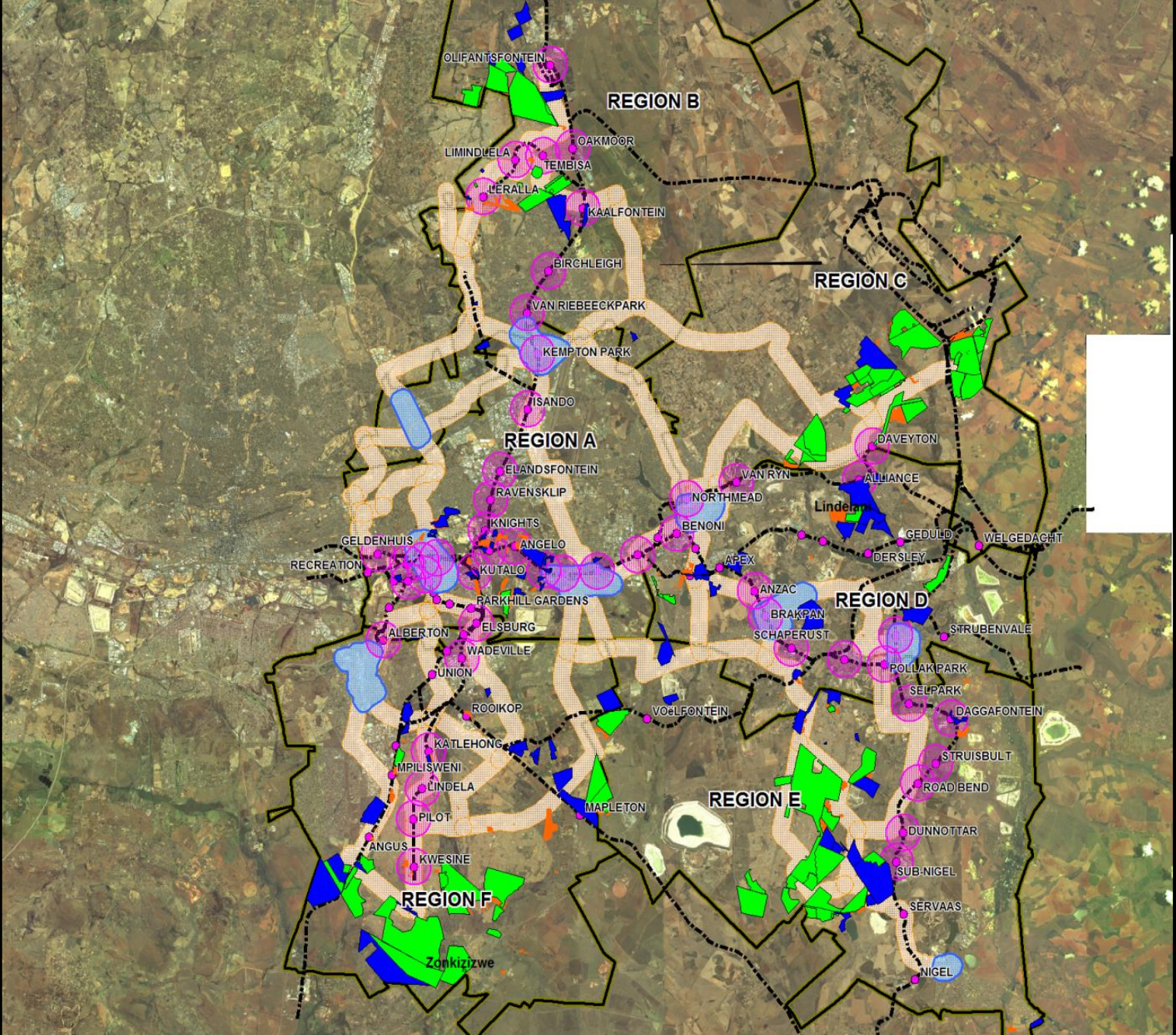
Ekurhuleni  
METROPOLITAN MUNICIPALITY

## SUSTAINABLE HUMAN SETTLEMENT PLAN

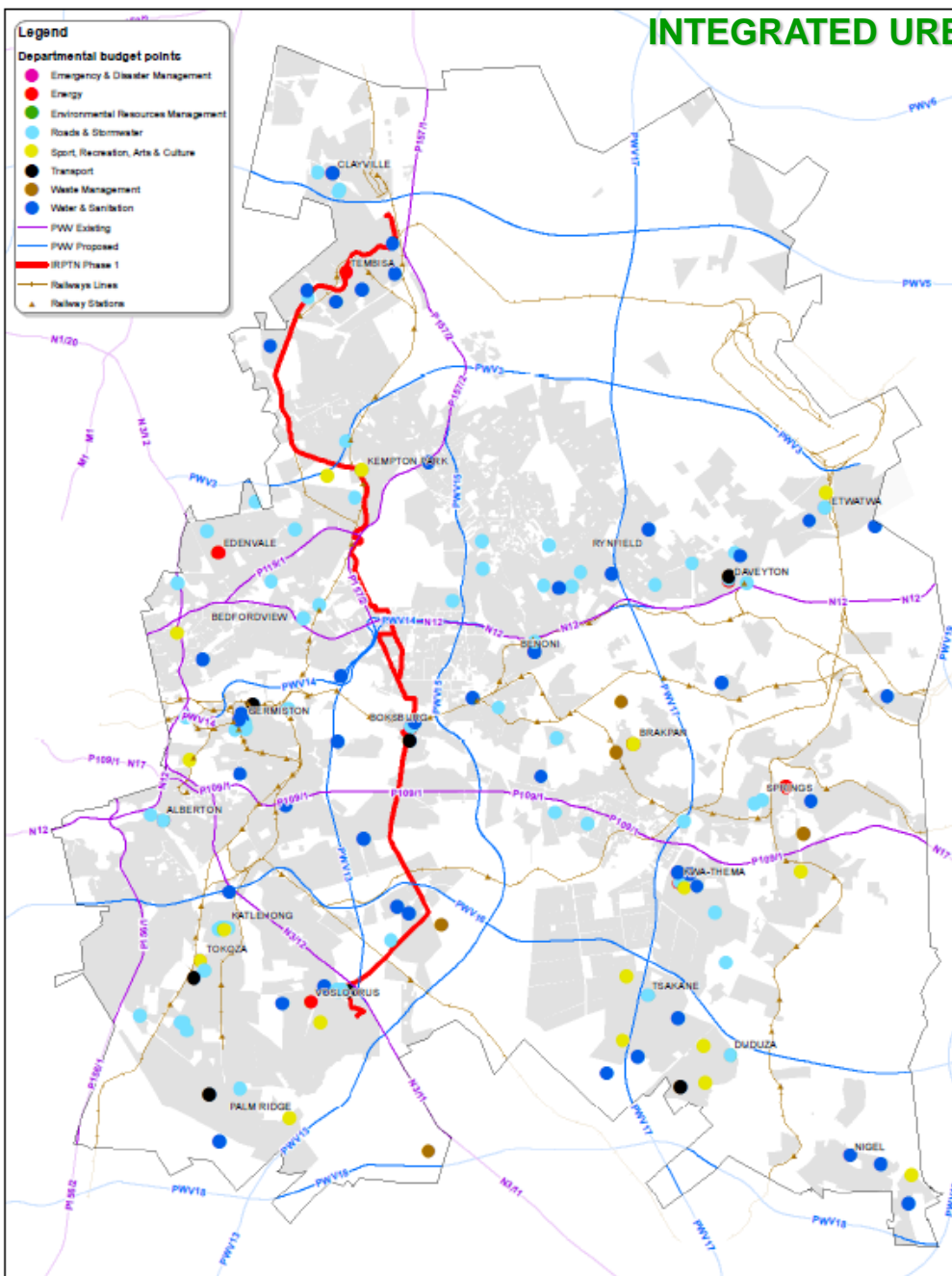
### HOUSING PROJECTS

#### Legend

- UM\_Regions
- Densification IRPTN
- Railway Lines
- Railway Stations
- Density Primary Nodes CBD
- Passenger Stations
- Informal 2010
- Housing Projects Type
- Current (8 353 ha)
- Potential (4 601ha)



# INTEGRATED URBAN SPACE AND PUBLIC TRANSPORT



- Legend**
- Departmental budget points**
- Emergency & Disaster Management
  - Energy
  - Environmental Resources Management
  - Roads & Stormwater
  - Sport, Recreation, Arts & Culture
  - Transport
  - Waste Management
  - Water & Sanitation
- PWV Existing  
 — PWV Proposed  
 — IRPTN Phase 1  
 — Railways Lines  
 ▲ Railway Stations

- Legend**
- Departmental budget points**
- Emergency & Disaster Management
  - Energy
  - Environmental Resources Management
  - Roads & Stormwater
  - Sport, Recreation, Arts & Culture
  - Transport
  - Waste Management
  - Water & Sanitation
- PWV Existing  
 — PWV Proposed  
 — IRPTN Phase 1  
 — Railways Lines  
 ▲ Railway Stations



hu  
 Dep  
 Hur  
 REI



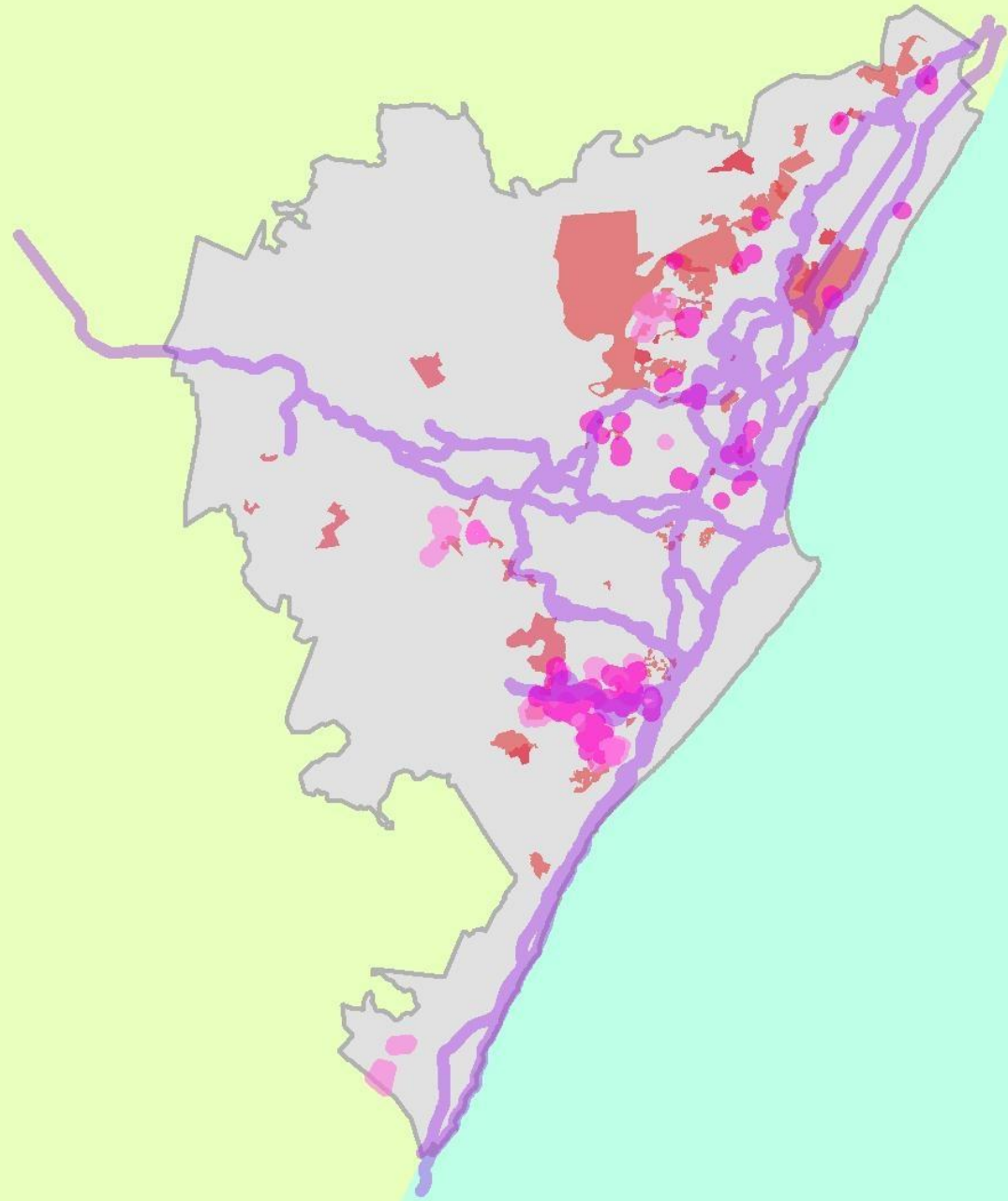
NTS

**USDG CAPITAL PROJECTS  
 2013/2014**

Approved by the Department of Transport, Republic of South Africa



# ETHEKWINI INTEGRATED URBAN SPACE AND PUBLIC TRANSPORT

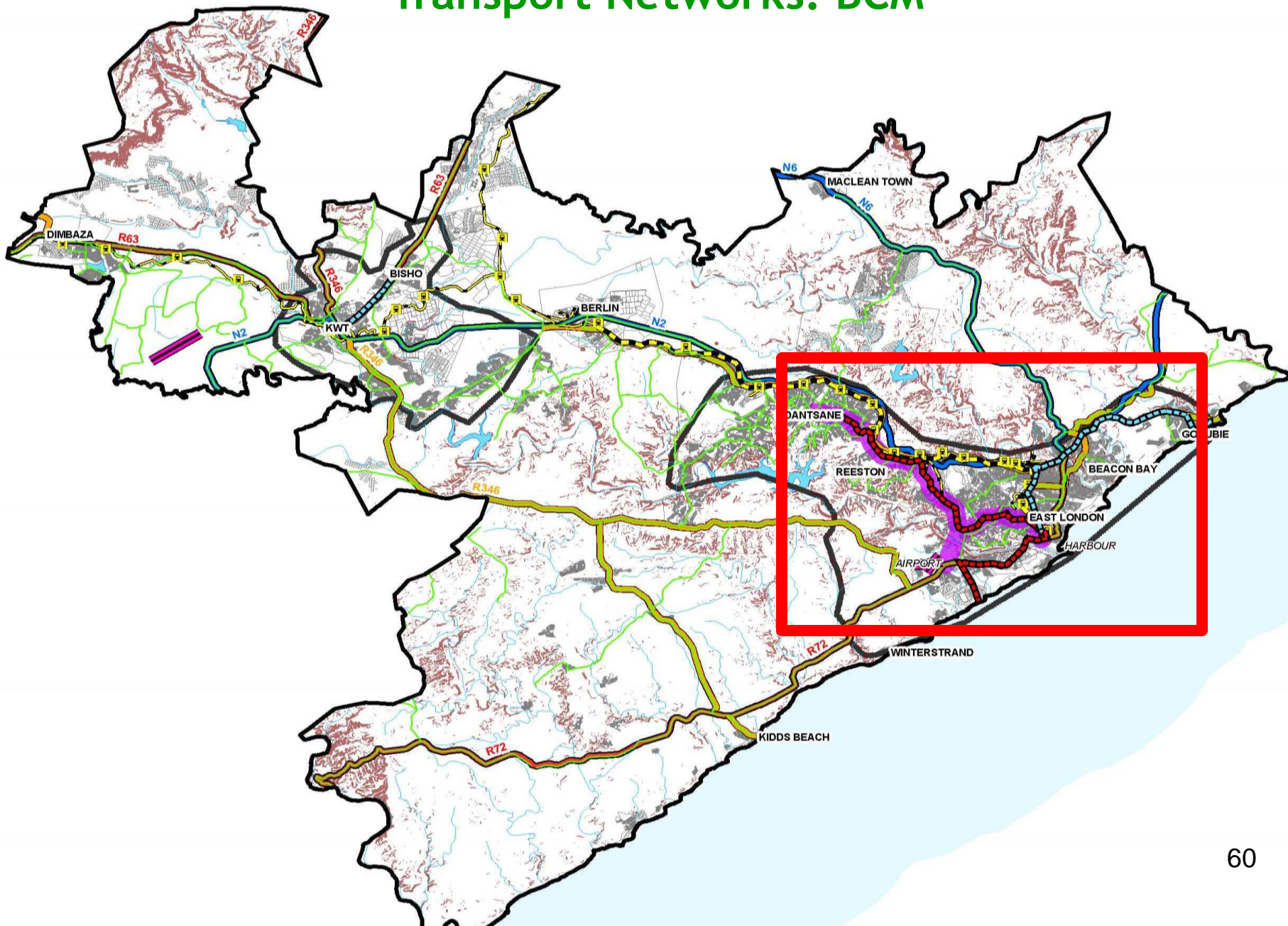


human settlements

Department:  
Human Settlements  
REPUBLIC OF SOUTH AFRICA

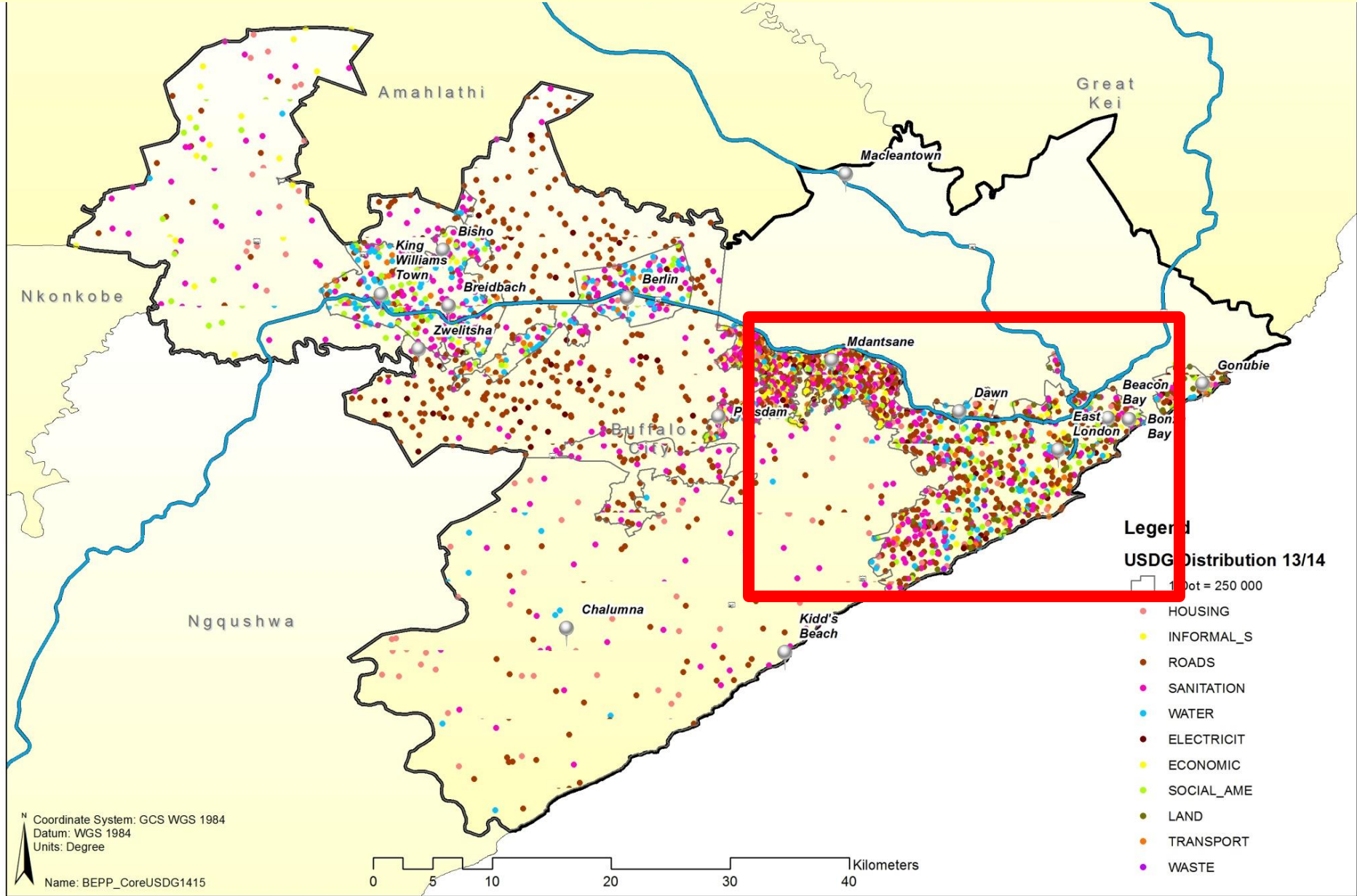


# INTEGRATED URBAN SPACE AND PUBLIC TRANSPORT Transport Networks: BCM



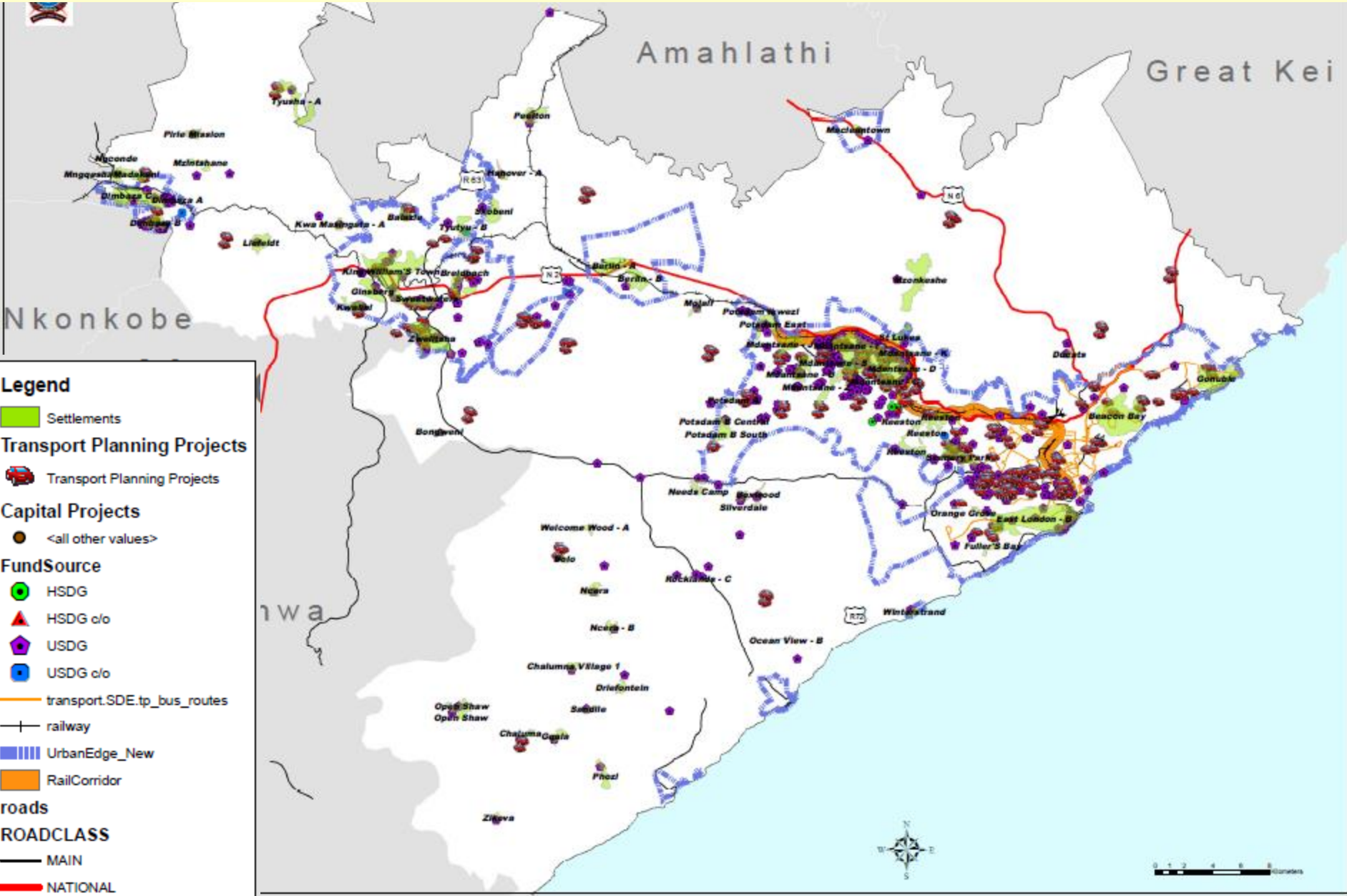
# INTEGRATED URBAN SPACE AND PUBLIC TRANSPORT

## BCM: USDG Funding Distribution 2013/2014



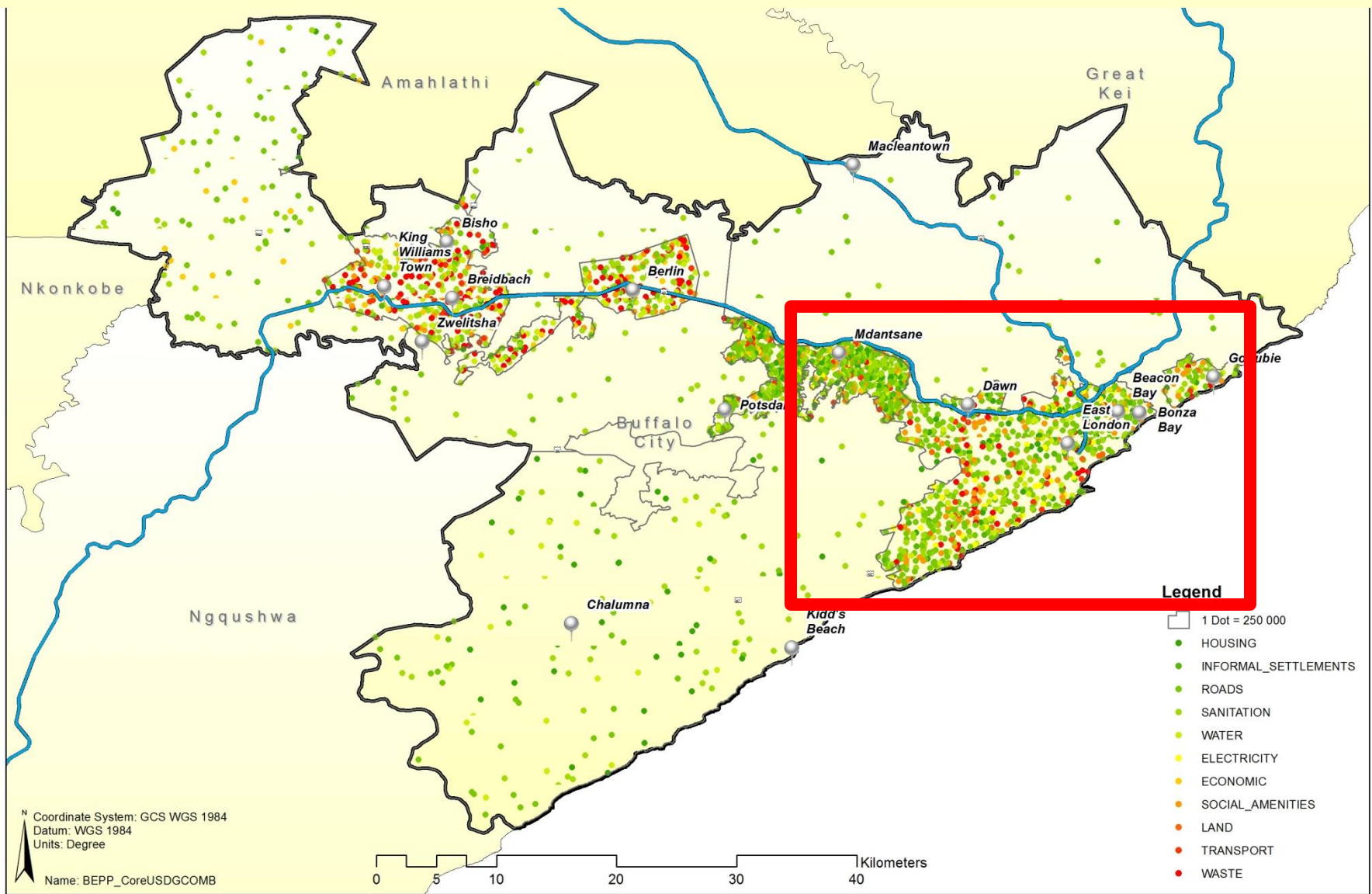
# INTEGRATED URBAN SPACE AND PUBLIC TRANSPORT

## BCM: USDG Funding Distribution 2013/2014



# BCM: USDG Funding Distribution 2014/2015

## INTEGRATED URBAN SPACE AND PUBLIC TRANSPORT



- Legend**
- 1 Dot = 250 000
  - HOUSING
  - INFORMAL\_SETTLEMENTS
  - ROADS
  - SANITATION
  - WATER
  - ELECTRICITY
  - ECONOMIC
  - SOCIAL\_AMENITIES
  - LAND
  - TRANSPORT
  - WASTE

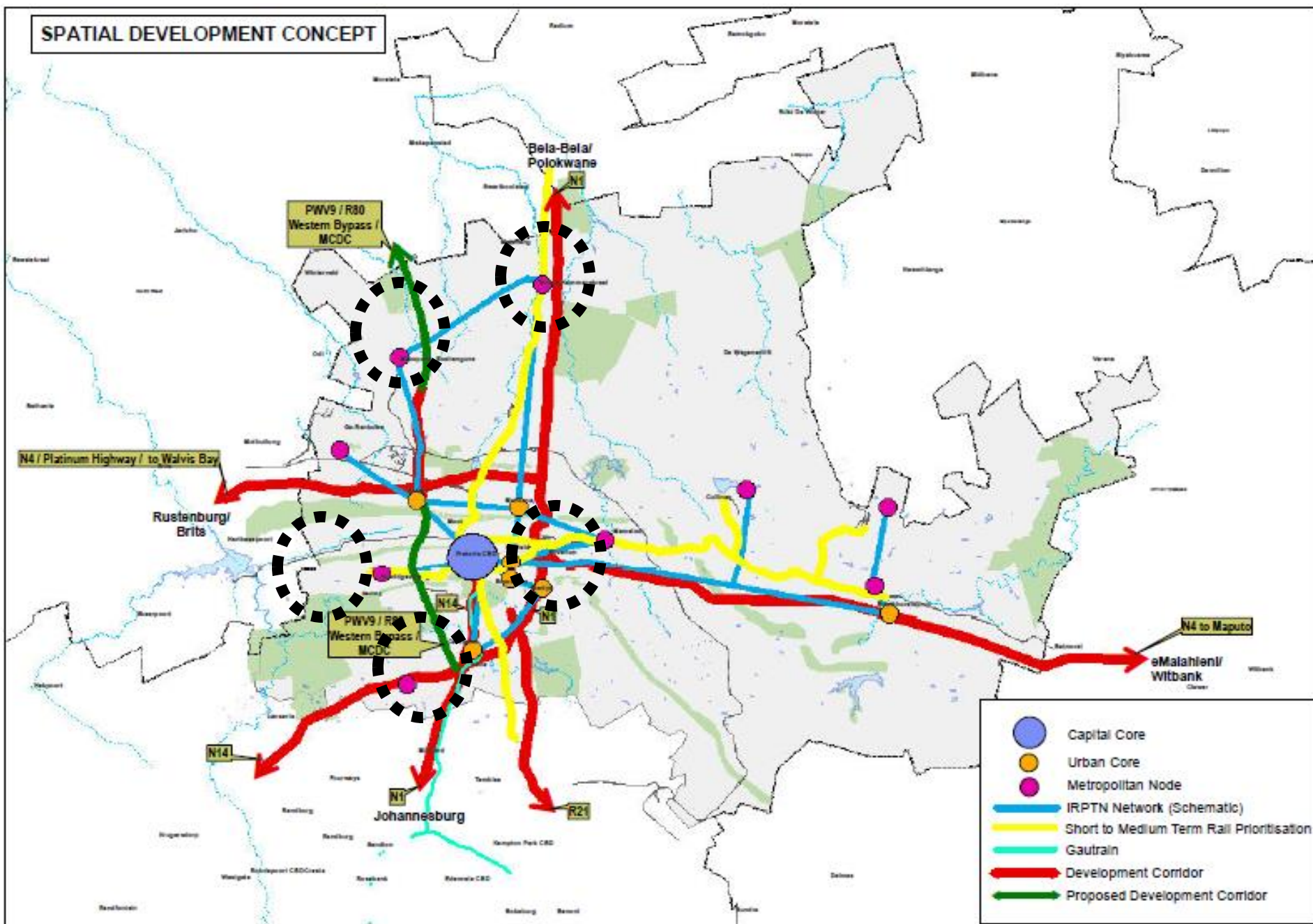
Coordinate System: GCS WGS 1984  
 Datum: WGS 1984  
 Units: Degree  
 Name: BEPP\_CoreUSDGCOMB



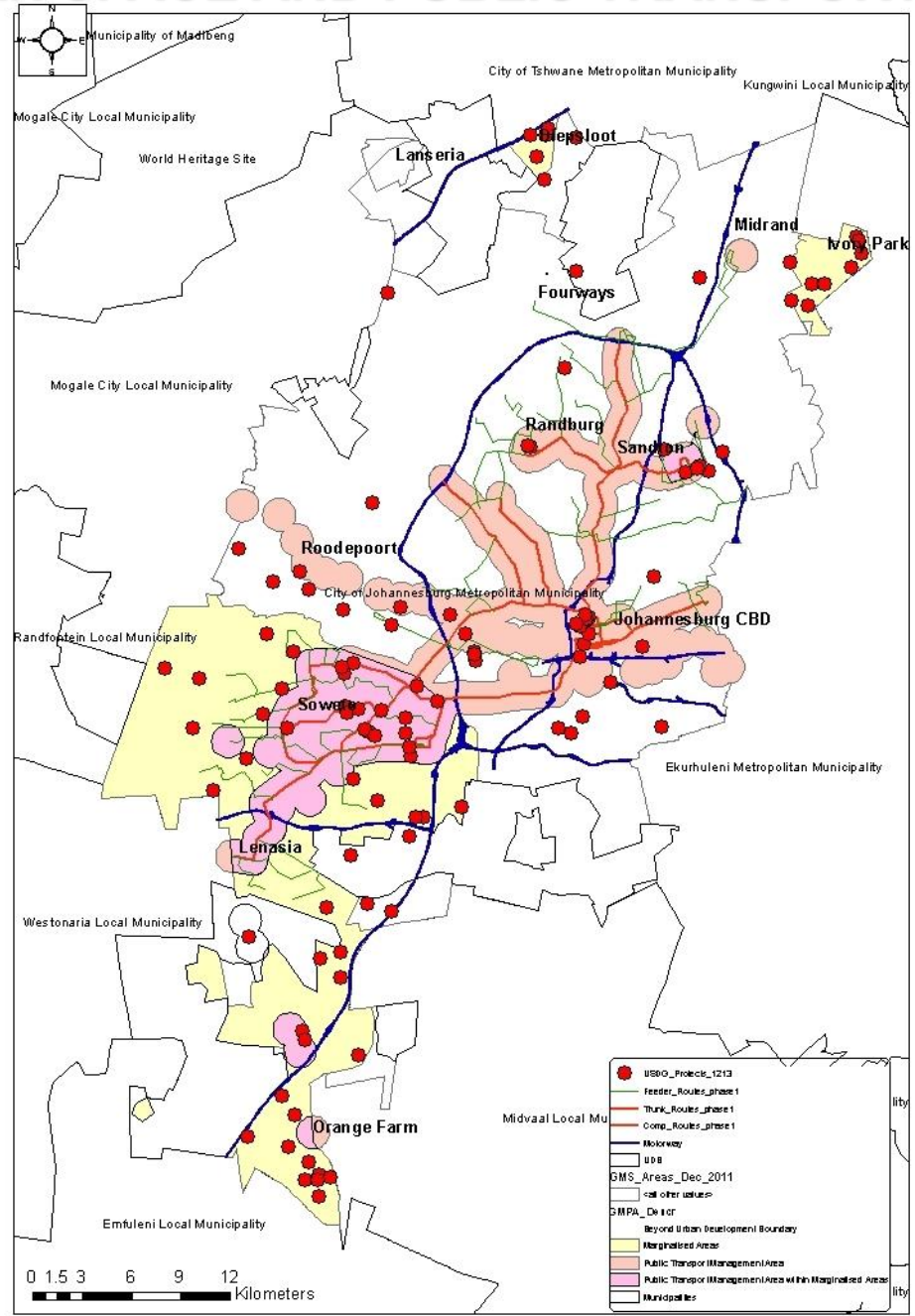


# INTEGRATED URBAN SPACE AND PUBLIC TRANSPORT CONCEPT: on GUIDING CAPITAL INVESTMENT

## SPATIAL DEVELOPMENT CONCEPT



# INTEGRATED URBAN SPACE AND PUBLIC TRANSPORT



human settlements

Department:  
Human Settlements  
REPUBLIC OF SOUTH AFRICA

# Mangaung Projects Update

SIP No.	Project Name	Location		Project Timeframe		Jobs	Costing R	Medium Term Expenditure Framework (MTEF) Budget R
				Start Date	End Date			2013/14
		Municipality (District)	GPS Coordinates			Total Jobs Projected	Total Cost of Project	
	<b>PLANNING</b>							
7	SERVICES RETICULATION OF MMM LAND WITHIN	Mangaung Metro						42,835,000
7	AIRPORT LINK (CONTRIBUTION TO SANRAL)	Mangaung Metro						4,715,000
7	HEAVY REHABILITATION OF EEUFEEES ROAD	Mangaung Metro		Mar-14	Aug-14			2,000,000
7	MECHANICAL AND ELECTRICAL WORKS FOR NORT	Mangaung Metro	29 05,215 26 19,442	Dec-12	Aug-14	519	62,312,027	40,100,000
7	ADDITION OF 10ML TO STERKWATER WWTW	Mangaung Metro	29 11,318 26 18,675	Sep-11	Nov-13	221	26,536,118	16,285,265
7	NAVAL HILL RESERVOIR 35 ML	Mangaung Metro	29 05,822 26 14,346	Apr-12	Nov-13	250	30,045,264	16,388,347
7	NAVAL HILL RESERVOIR 35 ML	Mangaung Metro	30 05,822 26 14,346	Apr-12	Nov-13	250	30,045,264	6,000,000
7	NAVAL HILL RESERVOIR: 3.5KM SUPL AND DEL	Mangaung Metro	31 05,822 26 14,346	Apr-12	Apr-13	349	41,939,031	26,000,000
7	LONGRIDGE RESERVOIR SUPPLY LINE 8.3 KM	Mangaung Metro	29 10,708 26 12,029	Aug-13	Jan-15	630	75,585,576	25,000,000
7	<b>CENTLEC</b>	Mangaung Metro						
7	ELECTRIFICATION CONNECTIONS DME	Mangaung Metro		Oct-13	Jun-14			7,000,000
7	ELECTRIFICATION CONNECTIONS DME	Mangaung Metro		Oct-13	Jun-14			14,000,000

# USDG/HSDG Allocations for Metro Councils

METRO	USDG	Gazetted Amount: drawn from Grant	HSDG		TOTAL ('000)
	Amount ('000)		Amount ('000)	% of Allocation	
Buffalo City	613,305		245,408	9.72%	858,713
Nelson Mandela	727,986	206,900	383,142	15.18%	1,111,128
Mangaung	596,719		286,779	25.58%	883,498
Ekurhuleni	1,584,912	933,800	1,034,645	32.11%	2,619,557
Jo'burg	1,488,877	1,314,000	1,421,144	34.50%	2,910,021
Tshwane	1,290,611	788,600	801,720	19.51%	2,092,331
eThekweni	1,580,999	878,400	1,038,819	29.39%	2,619,818
Cape Town	1,193,497	733,484	733,484	38.08%	1,926,981
<b>TOTAL</b>	<b>9,076,906</b>	<b>4,855,184</b>	<b>3,476,927</b>		<b>15,022,047</b>
% National Allocation				<b>20.47%</b>	



human settlements

Department:  
Human Settlements  
REPUBLIC OF SOUTH AFRICA

# Institutional Arrangements

- Reporting to the PICC Secretariat:
  - Firm Human Settlement HSDG/USDG programme/project commitments:
    - Financial allocations; and
    - Project Plans for 2013/14
  - Regular (quarterly) reporting i.r.o. said commitments
- On engagements with SIPs Co-ordinators via:
  - Direct bilaterals; and
  - Monthly SIPs Forum



**END**



**human settlements**

Department:  
Human Settlements  
**REPUBLIC OF SOUTH AFRICA**

**Water & Sanitation Master Plan  
2013**