

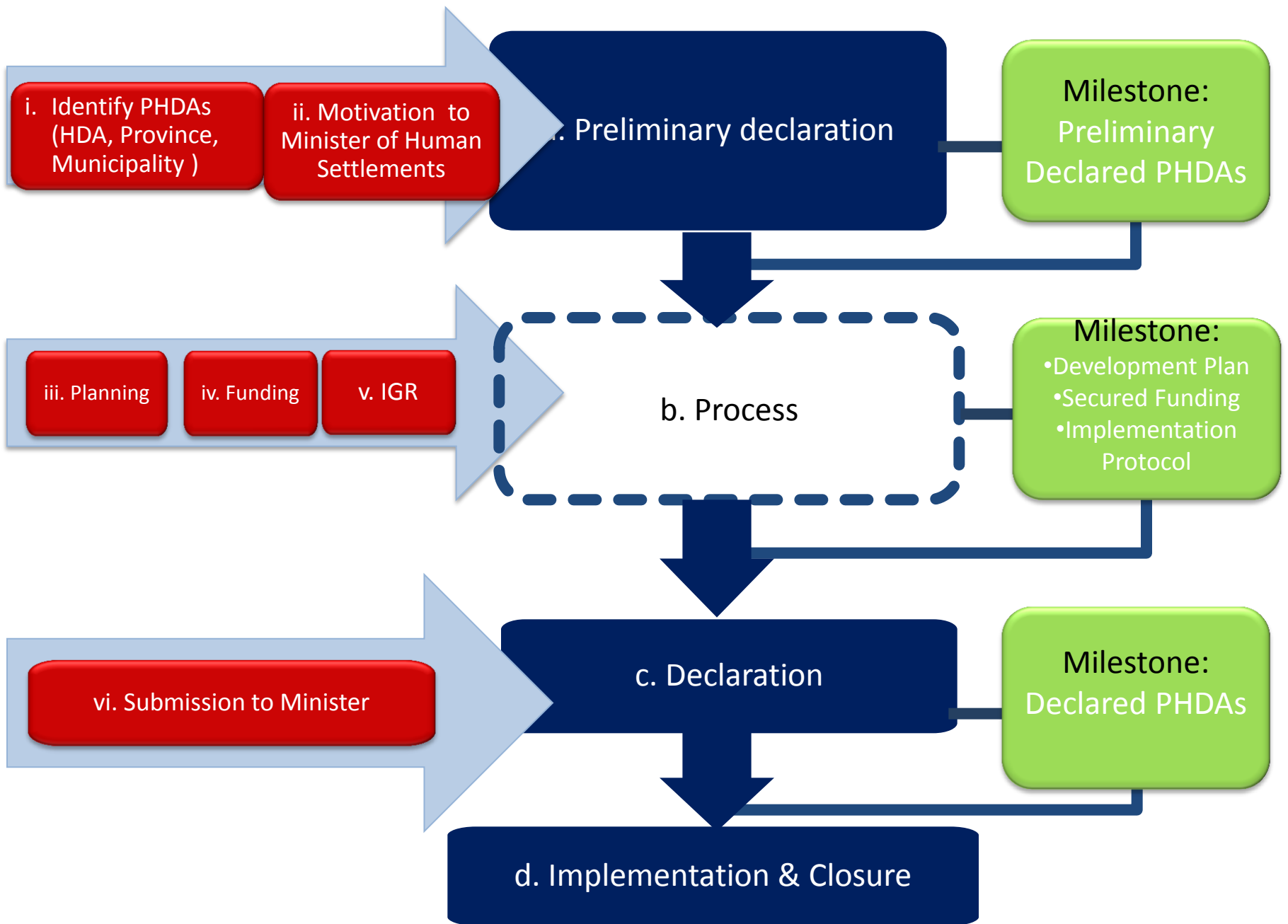
Accelerating the development of sustainable human settlements through land assembly, building and property acquisitions, and project management and support services



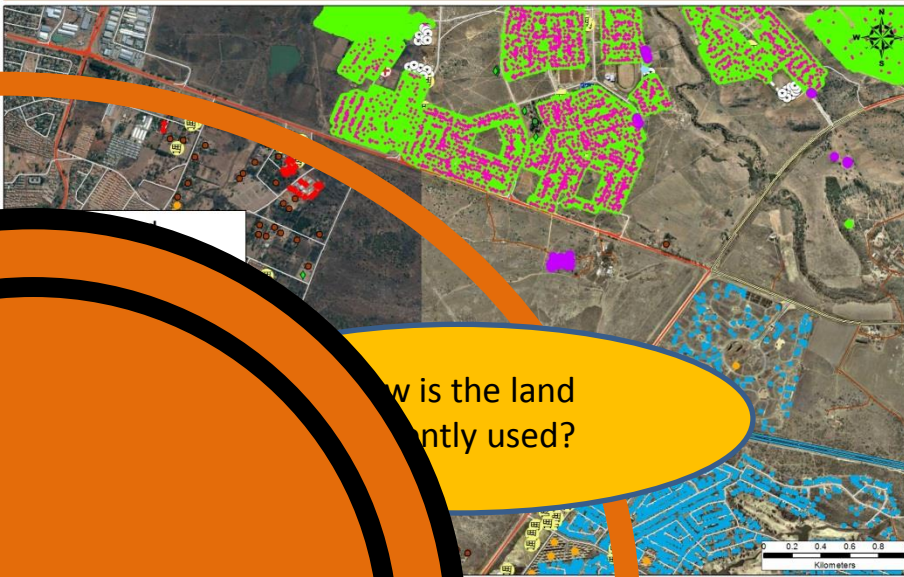
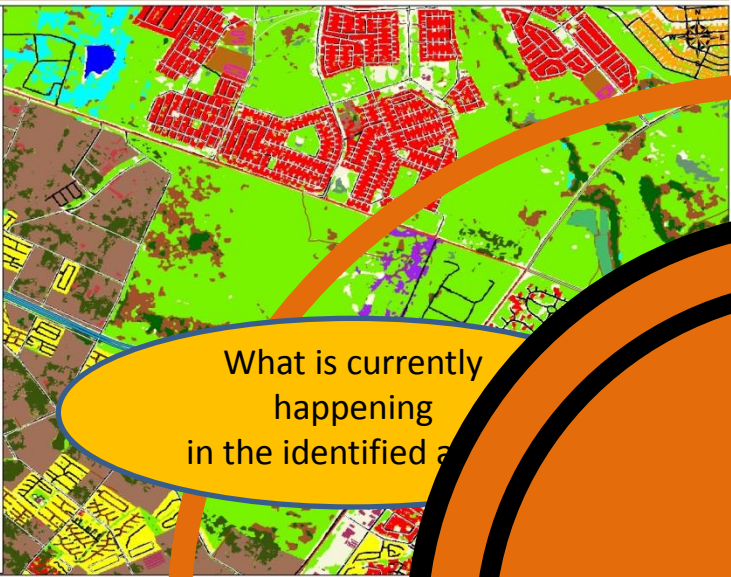
The PHDA Process

A Conceptual Plan

5th June 2013



- Legend**
- Road Network**
- Highway
 - Arterial
 - Main Roads
 - Other
 - Street
- Land Cover**
- Buildings
 - Building (Schools)
 - School grounds
 - Golf courses
 - Industrial
 - Residential - cluster
 - Residential
 - Township formal
 - Small holdings
 - Roads
 - Streets
 - Thicket, bushland, bush clumps
 - Forest (indigenous)
 - Trees (non-natural)
 - Planted & natural grassland
 - Wetlands
 - Degraded natural vegetation
 - Cultivated, commercial, dryland/
 - Mines & quarries
 - Open
 - Water
 - Bare rock & soil (natural surfac
 - New development



What is currently happening in the identified area?

How is the land currently used?

ENDORSED



How functional is the land currently?

How suitable is the land for development?


















Process



Implementation



Legend

-  Solar Farm
-  Communication Hub
-  Residential Phase 4
-  Construction
-  Community Centre
-  Residential Phase 3
-  Shopping Facilities
-  Industrial
-  Office Park
-  Place of Worship
-  Clinic
-  School
-  Residential Phase 2
-  Residential Phase 1
-  Informal Structures
- Farm House
- Street Layout